

1 ROOF PLAN  
1 : 200 @A1

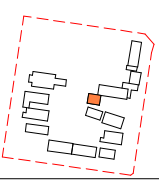


Department of Planning  
and Environment

Issued under the Environmental Planning and Assessment Act 1979

Application No: SSD-23512960 Sheet no: 31 of 40  
Granted on: 25 August 2022 Signed: PA

Key Plan:



**Drawing Disclaimer:**  
Do not scale from drawings.  
Verify all dimensions on site before commencing work.  
Copying or reproduction of this drawing is strictly prohibited without the consent of PTW Architects

**Note**  
PTW takes no responsibility for external building elements. Anything connected with any design, materials selection, construction or installation of any cladding, facade or external building element must be checked by and remains the responsibility of others, including suitably qualified experts as may be required.

Rev	Amendment	By	Chk*	Date
D	SSDA SUBMISSION	FJ	DJ	21/11/10
C	DRAFT SSDA SUBMISSION	FJ	DJ	21/11/01
B	DRAFT SSDA SUBMISSION	FJ	DJ	21/10/25
A	DRAFT SSDA SUBMISSION	MB	DJ	21/10/01

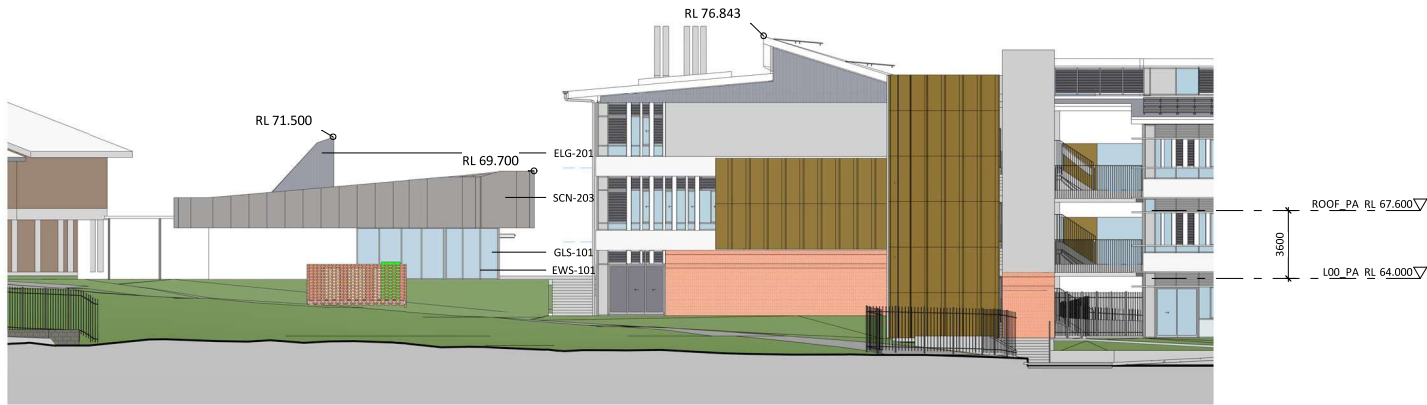
*Registered Architect		
DHJ	Diane H Jones	NSW Arch 4778

Consultants	

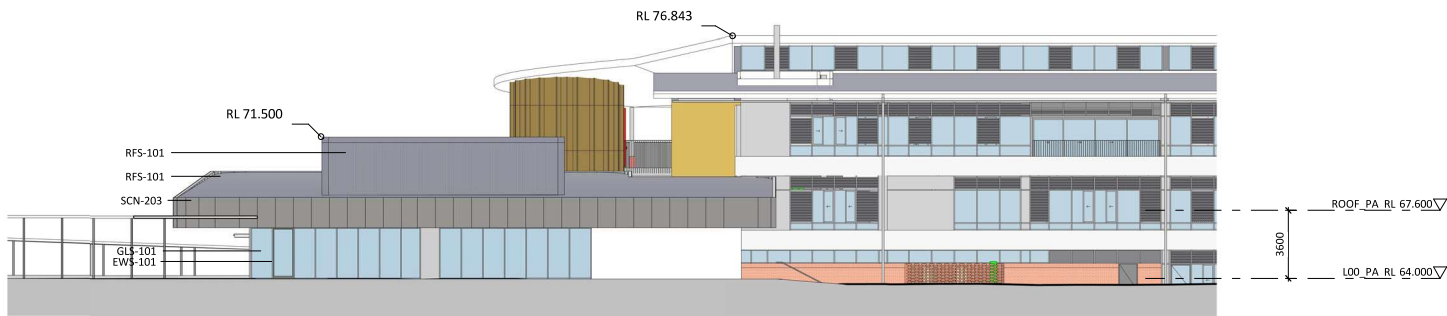
Client	
Architect	
PTW Architects	
Level 11, 88 Phillip Street	
Sydney NSW 2000 Australia	
T +61 2 9232 5877	
ptw.com.au	
Piedie Thorp & Walker P/L	
ABN 23 000 454 624	
trading as PTW Architects	
NSW Nominated Architects	
S Parsons Architect No 6098	
D Jones Architect No 4778	

0	1	2	3	10	15m
1 : 200 @ A1					
Project PA030471					
GLENWOOD HIGH SCHOOL					
FORMAN AVENUE, GLENWOOD, NSW					
2768					
Status					
SSDA SUBMISSION					

Title	SSDA
PERFORMING ARTS - LEVEL 01 -	
ROOF PLAN	
Drawing Number	DA-AR-P113
Revision	D



1 PERFORMING ARTS - EAST ELEVATION  
1 : 200 @A1



2 PERFORMING ARTS - SOUTH ELEVATION  
1 : 200 @A1

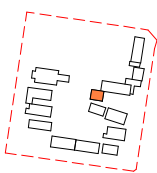


Department of Planning  
and Environment

Issued under the Environmental Planning and Assessment Act 1979

Application No: SSD-23512960      Sheet no: 32 of 40  
Granted on: 25 August 2022      Signed: PA

Key Plan:



**Drawing Disclaimer:**  
Do not scale from drawings.  
Verify all dimensions on site before commencing work.  
Copying or reproduction of this drawing is strictly prohibited without the consent of PTW Architects

**Note**  
PTW takes no responsibility for external building elements. Anything connected with any design, materials selection, construction or installation of any cladding, facade or external building element must be checked by and remains the responsibility of others, including suitably qualified experts as may be required.

Rev	Amendment	By	Chk*	Date
C	SSDA SUBMISSION	FJ	DJ	21/11/30
B	DRAFT SSDA SUBMISSION	FJ	DJ	21/11/01
A	DRAFT SSDA SUBMISSION	FJ	DJ	21/10/25

*Registered Architect
DHJ    Diane H Jones    NSW Arch 4778

Consultants

Client



Education

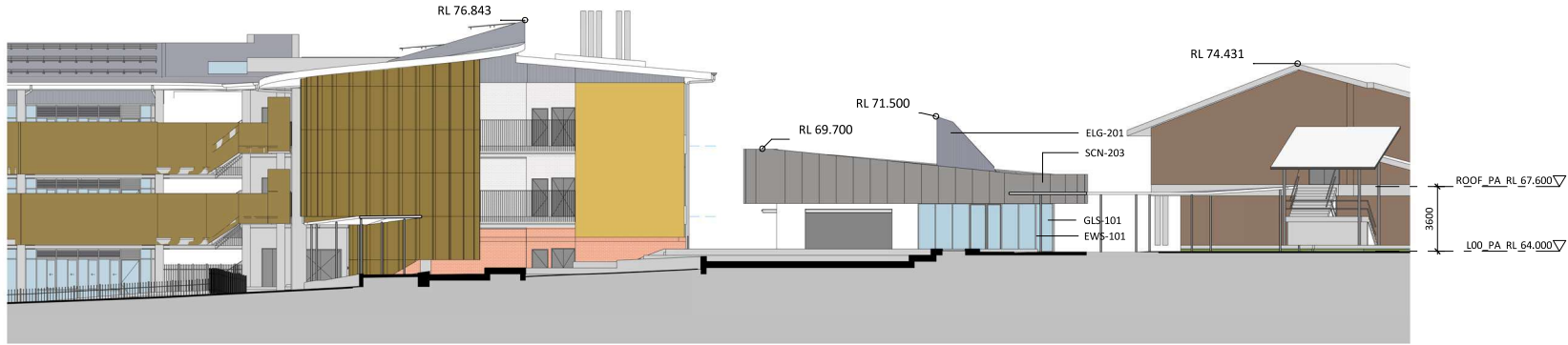
**Architect**  
PTW Architects  
Level 11, 88 Phillip Street  
Sydney NSW 2000 Australia  
T +61 2 9232 5877  
[ptw.com.au](http://ptw.com.au)



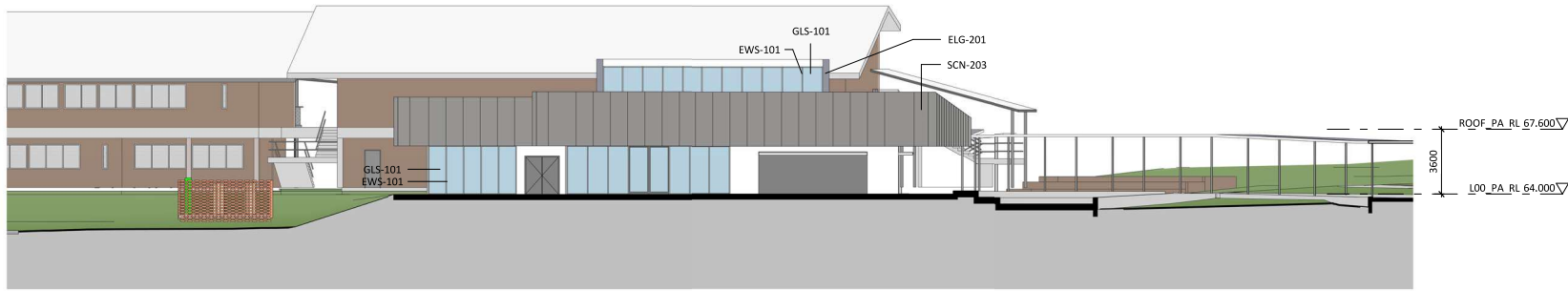
**Project** PA030471  
**GLENWOOD HIGH SCHOOL**  
FORMAN AVENUE, GLENWOOD, NSW  
2768  
**Status**  
SSDA SUBMISSION

**Title**  
SSDA  
**PERFORMING ARTS -**  
**ELEVATIONS - SHEET 1**  
**Drawing Number**  
DA-AR-P201

**Revision**  
C



1 PERFORMING ARTS - WEST ELEVATION  
1 : 200 @A1



2 PERFORMING ARTS - NORTH ELEVATION  
1 : 200 @A1

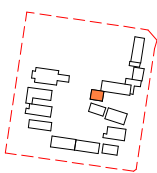


Department of Planning  
and Environment

Issued under the Environmental Planning and Assessment Act 1979

Application No: SSD-23512960      Sheet no: 33 of 40  
Granted on: 25 August 2022      Signed: PA

Key Plan:



**Drawing Disclaimer:**  
Do not scale from drawings.  
Verify all dimensions on site before commencing work.  
Copying or reproduction of this drawing is strictly prohibited without the consent of PTW Architects

**Note**  
PTW takes no responsibility for external building elements. Anything connected with any design, materials selection, construction or installation of any cladding, facade or external building element must be checked by and remains the responsibility of others, including suitably qualified experts as may be required.

Rev	Amendment	By	Chk*	Date
C	SSDA SUBMISSION	FJ	DJ	21/11/10
B	DRAFT SSDA SUBMISSION	FJ	DJ	21/11/01
A	DRAFT SSDA SUBMISSION	FJ	DJ	21/10/25

*Registered Architect		
DHJ	Diane H Jones	NSW Arch 4778

Consultants

Client



Education

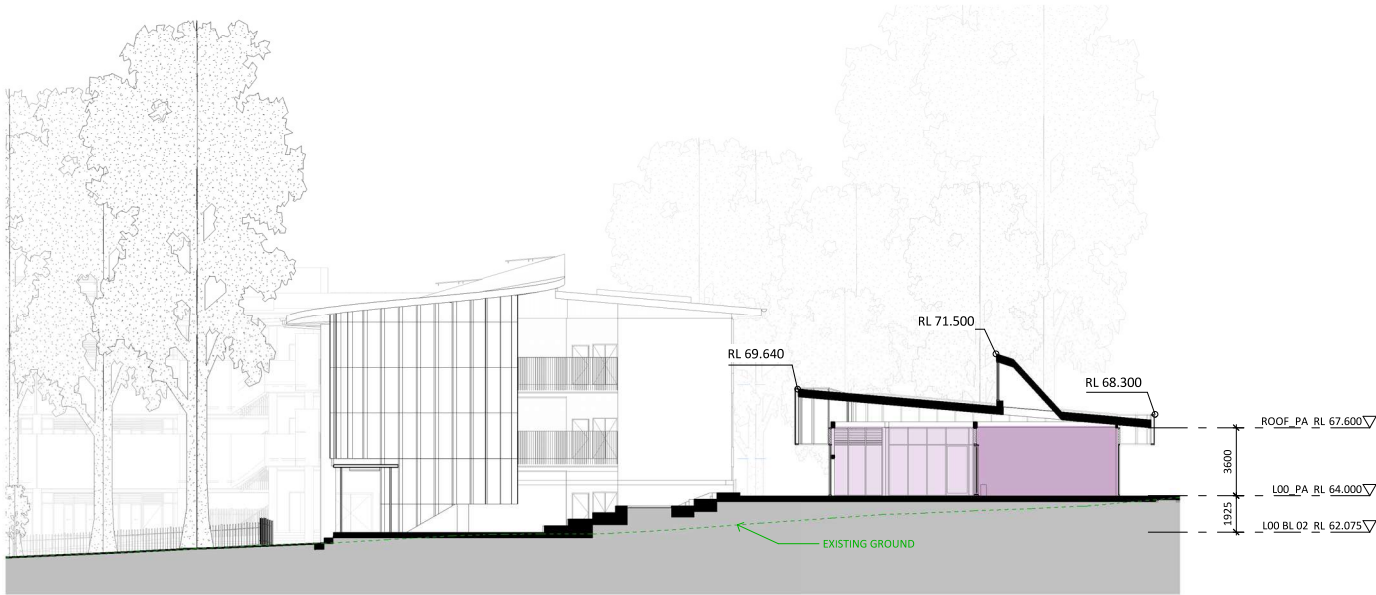
**Architect**  
PTW Architects  
Level 11, 88 Phillip Street  
Sydney NSW 2000 Australia  
T +61 2 9232 5877  
[ptw.com.au](http://ptw.com.au)



**Architect**  
PTW Architects  
Level 11, 88 Phillip Street  
Sydney NSW 2000 Australia  
T +61 2 9232 5877  
[ptw.com.au](http://ptw.com.au)

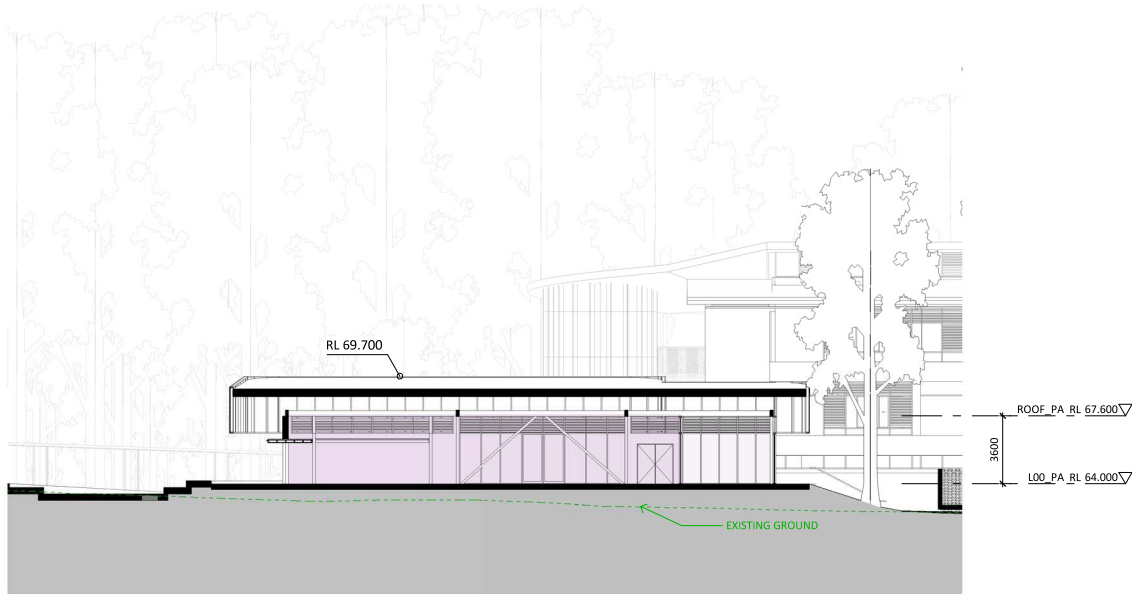
**Architect**  
PTW Architects  
Level 11, 88 Phillip Street  
Sydney NSW 2000 Australia  
T +61 2 9232 5877  
[ptw.com.au](http://ptw.com.au)

Revision  
C



- LEGEND
- NEW-PERFORMING ARTS UNIT
  - NEW-PERFORM ARTS WORKSHOP

1 PERFORMING ARTS - SECTION 1  
1 : 200 @A1



- LEGEND
- NEW-PERFORM ARTS WORKSHOP
  - NEW-PERFORM ARTS STORE

2 PERFORMING ARTS - SECTION 2  
1 : 200 @A1

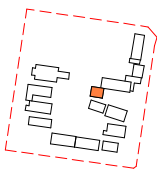


Department of Planning  
and Environment

Issued under the Environmental Planning and Assessment Act 1979

Application No: SSD-23512960      Sheet no: 34 of 40  
Granted on: 25 August 2022      Signed: PA

Key Plan:



**Drawing Disclaimer:**  
Do not scale from drawings.  
Verify all dimensions on site before commencing work.  
Copying or reproduction of this drawing is strictly prohibited without the consent of PTW Architects

**Note**  
PTW takes no responsibility for external building elements. Anything connected with any design, materials selection, construction or installation of any cladding, facade or external building element must be checked by and remains the responsibility of others, including suitably qualified experts as may be required.

Rev	Amendment	By	Chk*	Date
D	SSDA SUBMISSION	FJ	DJ	21/11/10
C	DRAFT SSDA SUBMISSION	FJ	DJ	21/11/01
B	DRAFT SSDA SUBMISSION	FJ	DJ	21/10/25
A	DRAFT SSDA SUBMISSION	MB	DJ	21/10/01

*Registered Architect		
DHJ	Diane H Jones	NSW Arch 4778

Consultants

Client



Education

Architect  
PTW Architects  
Level 11, 88 Phillip Street  
Sydney NSW 2000 Australia  
T +61 2 9232 5877  
[ptw.com.au](http://ptw.com.au)

Peddie Thorp & Walker P/L  
ABN 23 000 454 624  
trading as PTW Architects

NSW Nominated Architects  
S Parsons Architect No.6098  
D Jones Architect No.4778



0 1 2 5 10 15m  
1 : 200 @ A1  
Project PA030471  
**GLENWOOD HIGH SCHOOL**  
FORMAN AVENUE, GLENWOOD, NSW  
2768  
Status  
SSDA SUBMISSION

Title  
SSDA  
**PERFORMING ARTS - SECTIONS**  
Drawing Number  
**DA-AR-P301**  
Revision  
**D**