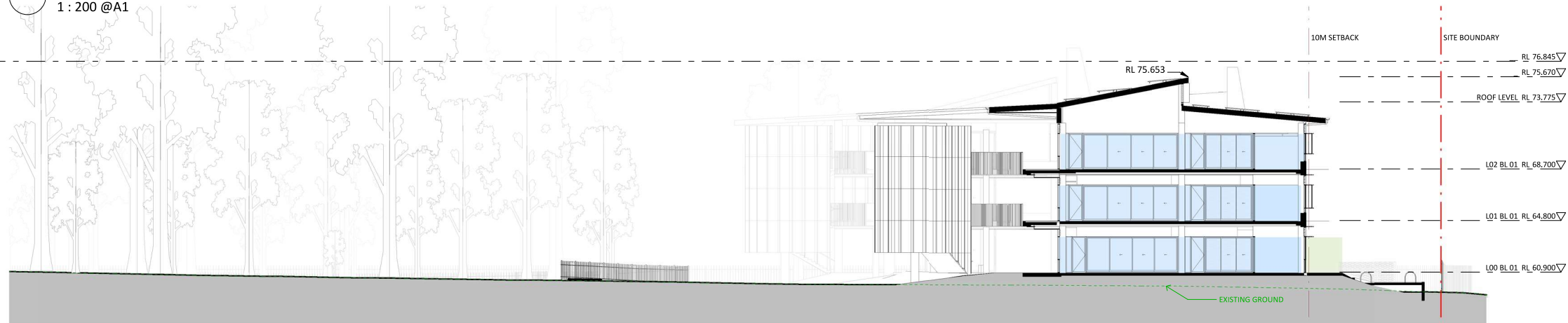


LEGEND

- NEW-GENERAL LEARNING UNIT
- NEW-OUTDOOR COVERED LEARNING
- NEW-VISUAL ARTS WORKSHOP

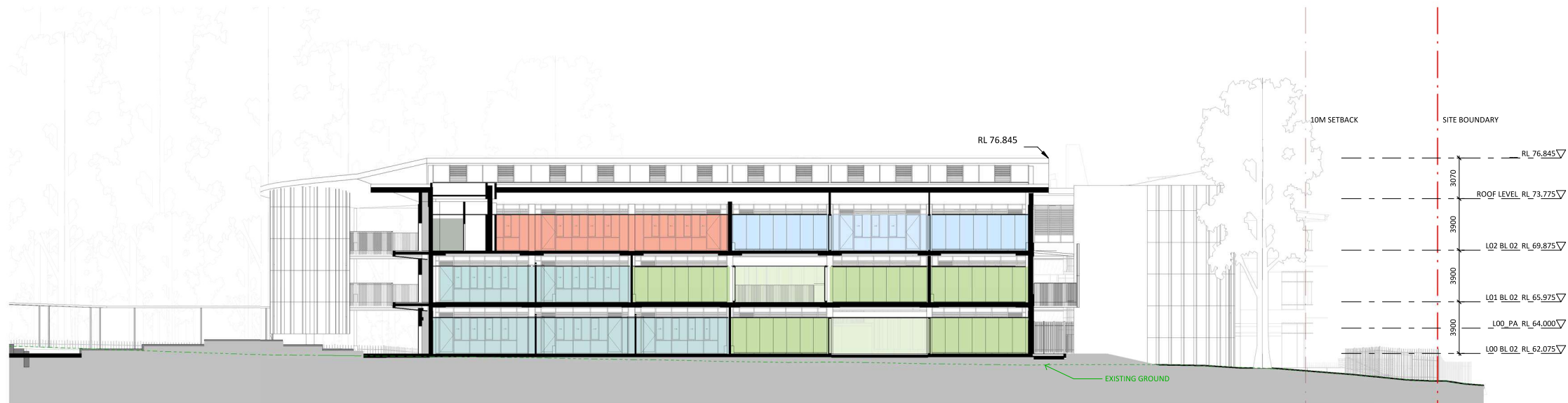
1 NEW BUILDING - SECTION
1 : 200 @A1



LEGEND

- NEW-GENERAL LEARNING UNIT
- NEW-SHARED LEARNING SPACE
- NEW-OUTDOOR COVERED LEARNING

2 NEW BUILDING - SECTION
1 : 200 @A1



LEGEND

- NEW-GENERAL LEARNING UNIT
- NEW-SHARED LEARNING SPACE
- NEW-OUTDOOR COVERED LEARNING
- NEW-SCIENCE LEARNING UNIT
- NEW-SCIENCE LABORATORY
- NEW-STAFF UNIT
- NEW-STORAGE UNIT / COMMS
- NEW-STAFF AMENITIES

3 NEW BUILDING - SECTION
1 : 200 @A1



**Department of Planning
and Environment**

Issued under the Environmental Planning and Assessment Act 1979

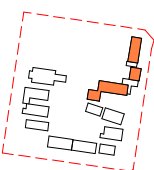
Application No: SSD-23512960

Sheet no: 26 of 40

Granted on: 25 August 2022

Signed: PA

Key Plan:



Drawing Disclaimer:
Do not scale from drawings.
Verify all dimensions on site before commencing work.
Copying or reproduction of this drawing is strictly prohibited without the consent of PTW Architects

Note
PTW takes no responsibility for external building elements. Anything connected with any design, materials selection, construction or installation of any cladding, facade or external building element must be checked by and remains the responsibility of others, including suitably qualified experts as may be required.

Rev	Amendment	By	Chk*	Date
D	SSDA SUBMISSION	QF	DJ	21/11/10
C	DRAFT SSDA SUBMISSION	MB	DJ	21/11/01
B	DRAFT SSDA SUBMISSION	MB	DJ	21/10/25
A	DRAFT SSDA SUBMISSION	MB	DJ	21/10/01

*Registered Architect
DHJ Diane H Jones NSW Arch 4778

Consultants

Client



Education

Architect
PTW Architects
Level 11, 88 Phillip Street
Sydney NSW 2000 Australia
T +61 2 9232 5877
ptw.com.au

Peddie Thorp & Walker P/L
ABN 23 000 454 624
trading as PTW Architects

NSW Nominated Architects
S Parsons Architect No.6098
D Jones Architect No.4778



0 1 2 3 4 5 10 15m
1 : 200 @ A1
Project PA030471
GLENWOOD HIGH SCHOOL
FORMAN AVENUE, GLENWOOD, NSW
2768
Status
SSDA SUBMISSION

Title
SSDA
BUILDING SECTIONS - SHEET 1
Drawing Number
DA-AR-N301
Revision
D




- LEGEND
- NEW-GENERAL LEARNING UNIT
 - NEW-SHARED LEARNING SPACE
 - NEW-OUTDOOR COVERED LEARNING
 - NEW-STORAGE UNIT / COMMS
 - NEW-STUDENT AMENITIES
 - NEW-VISUAL ARTS UNIT
 - NEW-VISUAL ARTS WORKSHOP
 - NEW-VISUAL ARTS STORE

4 NEW BUILDING - SECTION
1 : 200 @A1



- LEGEND
- NEW-SCIENCE LEARNING UNIT
 - NEW-SCIENCE LABORATORY
 - NEW-SCIENCE STORE
 - NEW-STAFF UNIT

5 NEW BUILDING - SECTION
1 : 200 @A1



**Department of Planning
and Environment**

Issued under the Environmental Planning and Assessment Act 1979

Application No: SSD-23512960

Sheet no: 27 of 40

Granted on: 25 August 2022

Signed: PA



Department of Planning
and Environment

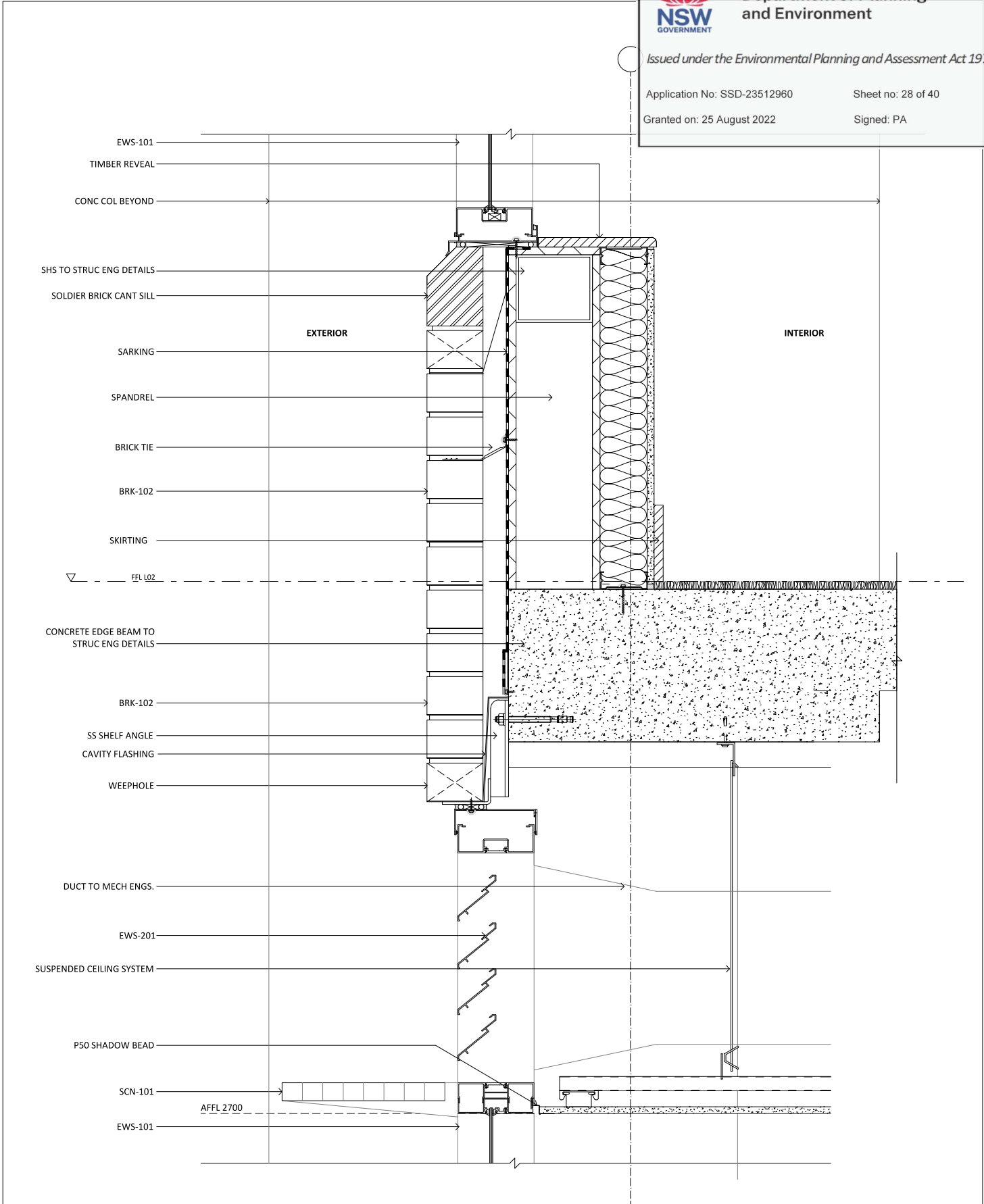
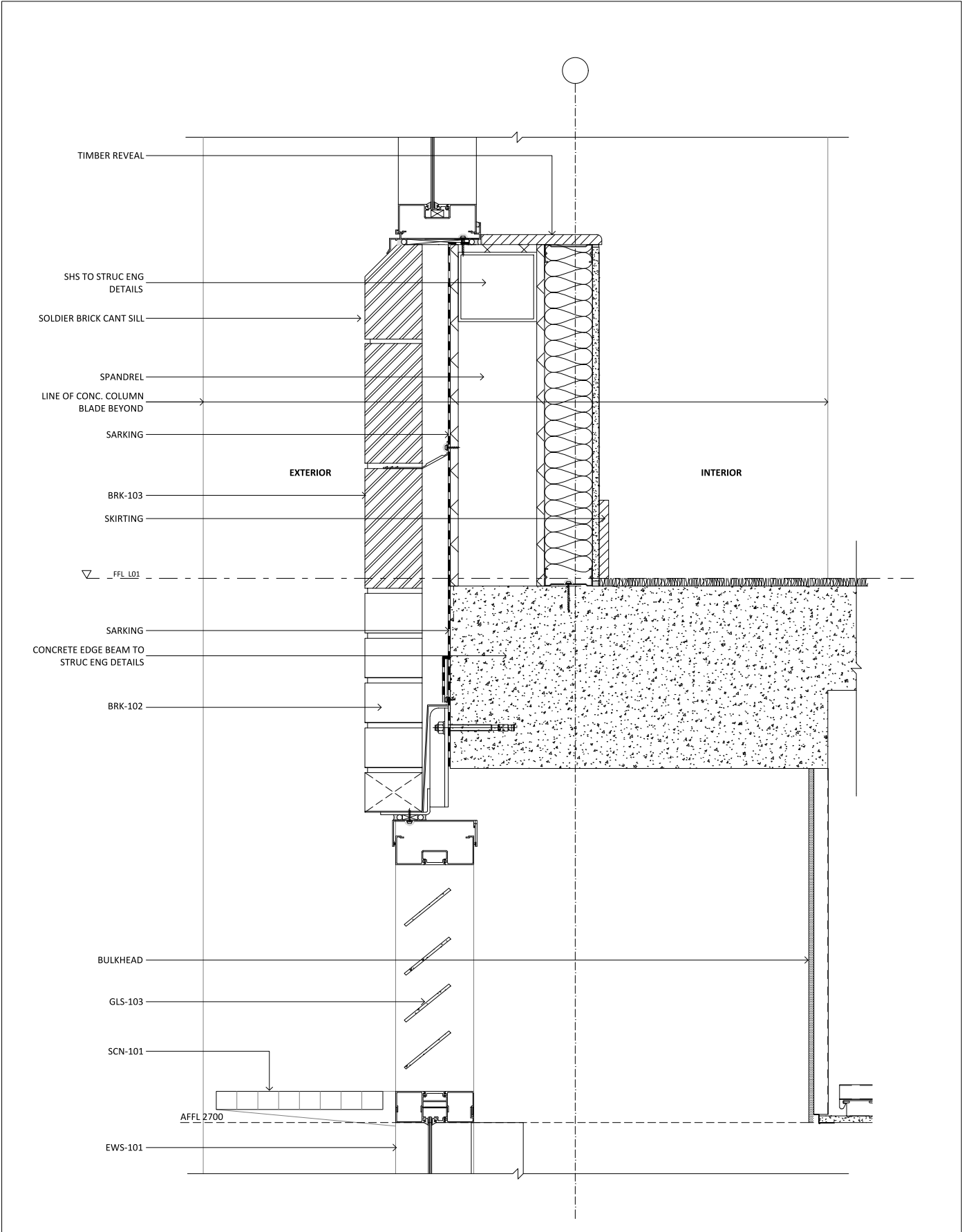
Issued under the Environmental Planning and Assessment Act 1979

Application No: SSD-23512960

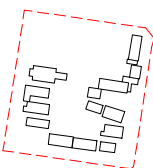
Sheet no: 28 of 40

Granted on: 25 August 2022

Signed: PA



Key Plan:



Drawing Disclaimer:
Do not scale from drawings.
Verify all dimensions on site before commencing work.
Copying or reproduction of this drawing is strictly prohibited without the consent of PTW Architects

Note
PTW takes no responsibility for external building elements. Anything connected with any design, materials selection, construction or installation of any cladding, facade or external building element must be checked by and remains the responsibility of others, including suitably qualified experts as may be required.

Rev	Amendment	By	Chk*	Date
C	SSDA SUBMISSION	MB	DJ	21/11/10
B	DRAFT SSDA SUBMISSION	MB	DJ	21/11/01
A	DRAFT SSDA SUBMISSION	MB	DJ	21/10/25

*Registered Architect
DHJ Diane H Jones NSW Arch 4778

Consultants

Client



Architect
PTW Architects
Level 11, 88 Phillip Street
Sydney NSW 2000 Australia
T +61 2 9232 5877
ptw.com.au

Peddie Thorp & Walker P/L
ABN 23 000 454 624
trading as PTW Architects

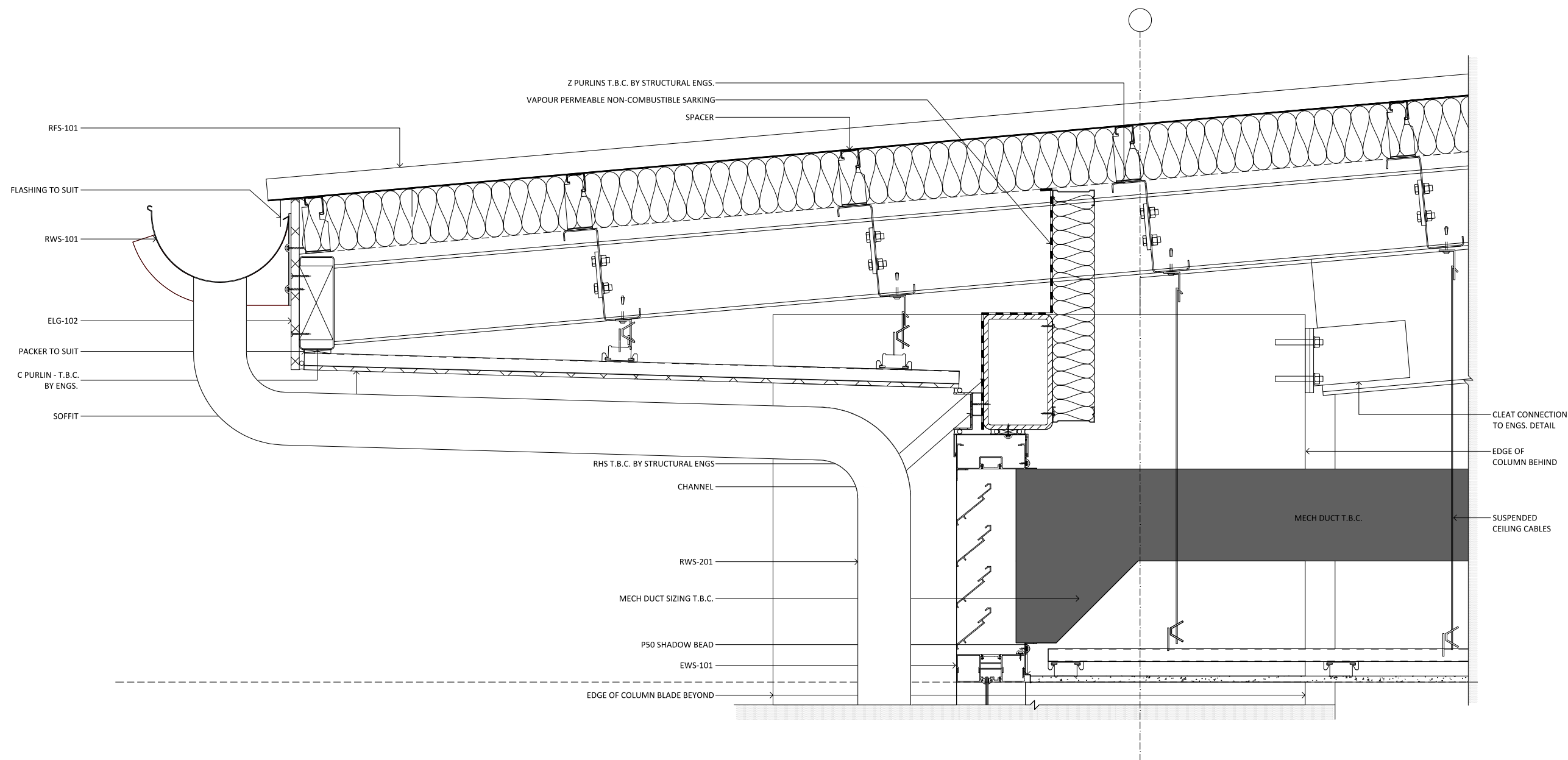
NSW Nominated Architects
S Parsons Architect No.6098
D Jones Architect No.4778



Project PA030471
GLENWOOD HIGH SCHOOL
FORMAN AVENUE, GLENWOOD, NSW
2768
Status
SSDA SUBMISSION

Title
SSDA
TYPICAL FACADE SECTIONS -
SHEET1
Drawing Number
DA-AR-N501


Revision
C



1

Section Detail Typical - Roof Eaves

1 : 5 @A1



**Department of Planning
and Environment**

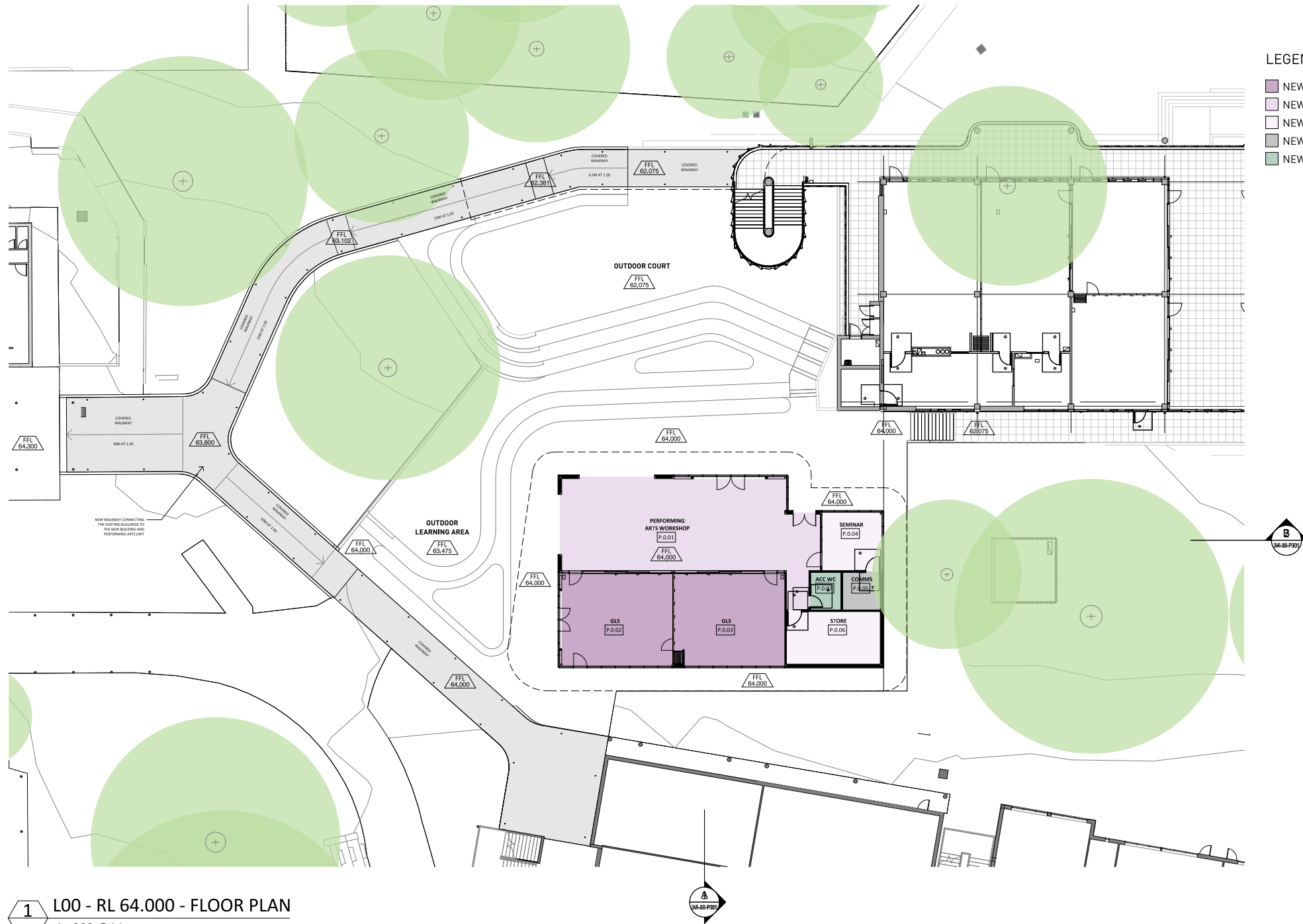
Issued under the Environmental Planning and Assessment Act 1979

Application No: SSD-23512960

Sheet no: 29 of 40

Granted on: 25 August 2022

Signed: PA



- LEGEND
- NEW-PERFORMING ARTS UNIT
 - NEW-PERFORM ARTS WORKSHOP
 - NEW-PERFORM ARTS STORE
 - NEW-STORAGE UNIT / COMMS
 - NEW-STUDENT AMENITIES



1 L00 - RL 64.000 - FLOOR PLAN
1 : 200 @A1

 **Department of Planning and Environment**

Issued under the Environmental Planning and Assessment Act 1979

Application No: SSD-23512960 Sheet no: 30 of 40

Granted on: 25 August 2022 Signed: PA

<div>Key Plan:</div> <div></div>	<div>Drawing Disclaimer:</div> <div>Do not scale from drawings.</div> <div>Verify all dimensions on site before commencing work.</div> <div>Copying or reproduction of this drawing is strictly prohibited without the consent of PTW Architects</div> <div>Note</div> <div>PTW takes no responsibility for external building elements. Anything connected with any design, materials selection, construction or installation of any cladding, facade or external building element must be checked by and remains the responsibility of others, including suitably qualified experts as may be required.</div>	<table><tr><th>Rev</th><th>Amendment</th><th>By</th><th>Chk*</th><th>Date</th></tr><tr><td>D</td><td>SSDA SUBMISSION</td><td>FJ</td><td>DJ</td><td>21/11/10</td></tr><tr><td>C</td><td>DRAFT SSDA SUBMISSION</td><td>FJ</td><td>DJ</td><td>21/11/01</td></tr><tr><td>B</td><td>DRAFT SSDA SUBMISSION</td><td>FJ</td><td>DJ</td><td>21/10/25</td></tr><tr><td>A</td><td>DRAFT SSDA SUBMISSION</td><td>MB</td><td>DJ</td><td>21/10/01</td></tr></table>	Rev	Amendment	By	Chk*	Date	D	SSDA SUBMISSION	FJ	DJ	21/11/10	C	DRAFT SSDA SUBMISSION	FJ	DJ	21/11/01	B	DRAFT SSDA SUBMISSION	FJ	DJ	21/10/25	A	DRAFT SSDA SUBMISSION	MB	DJ	21/10/01	<table><tr><th>*Registered Architect</th></tr><tr><td>DHJ Diane H Jones NSW Arch 4778</td></tr></table>	*Registered Architect	DHJ Diane H Jones NSW Arch 4778	<div>Consultants</div>	<div>Client</div> <div> Education</div>	<div>Architect</div> <div>PTW Architects</div> <div>Level 11, 88 Phillip Street</div> <div>Sydney NSW 2000 Australia</div> <div>T +61 2 9232 5877</div> <div>ptw.com.au</div> <div><div>Peddie Thorp & Walker P/L</div><div>ABN 23 000 454 624</div><div>trading as PTW Architects</div></div> <div><div>NSW Nominated Architects</div><div>S Parsons Architect No.6098</div><div>D Jones Architect No.4778</div></div>	<div><div>012341015m</div><div>1 : 200 @ A1</div></div> <div>Project PA030471</div> <div>GLENWOOD HIGH SCHOOL</div> <div>FORMAN AVENUE, GLENWOOD, NSW</div> <div>2768</div> <div>Status</div> <div>SSDA SUBMISSION</div> <div>Title</div> <div>SSDA</div> <div>PERFORMING ARTS - GA - LEVEL</div> <div>00</div> <div>Drawing Number</div> <div>DA-AR-P103</div> <div>Revision</div> <div>D</div>
	Rev	Amendment	By	Chk*	Date																													
D	SSDA SUBMISSION	FJ	DJ	21/11/10																														
C	DRAFT SSDA SUBMISSION	FJ	DJ	21/11/01																														
B	DRAFT SSDA SUBMISSION	FJ	DJ	21/10/25																														
A	DRAFT SSDA SUBMISSION	MB	DJ	21/10/01																														
*Registered Architect																																		
DHJ Diane H Jones NSW Arch 4778																																		