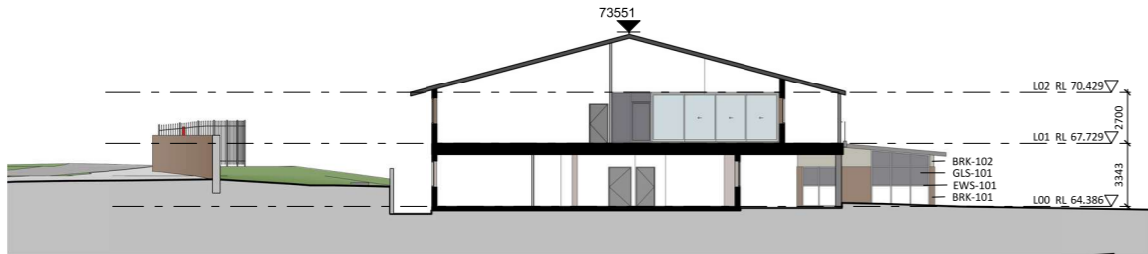



1 BUILDIND DEF - NORTH ELEVATION  
1 : 200 @A1



2 BUILDING DEF - SOUTH ELEVATION  
1 : 200 @A1



3 BUILDING DEF - EAST ELEVATION  
1 : 200



Department of Planning  
and Environment

Issued under the Environmental Planning and Assessment Act 1979

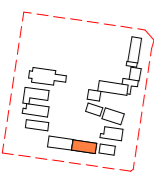
Application No: SSD-23512960

Sheet no: 16 of 40

Granted on: 25 August 2022

Signed: PA

Key Plan:



**Drawing Disclaimer:**  
Do not scale from drawings.  
Verify all dimensions on site before commencing work.  
Copying or reproduction of this drawing is strictly prohibited without the consent of PTW Architects

**Note**  
PTW takes no responsibility for external building elements. Anything connected with any design, materials selection, construction or installation of any cladding, facade or external building element must be checked by and remains the responsibility of others, including suitably qualified experts as may be required.

Rev	Amendment	By	Chk*	Date
C	SSDA SUBMISSION	FJ	DJ	21/11/30
B	DRAFT SSDA SUBMISSION	MB	DJ	21/11/01
A	DRAFT SSDA SUBMISSION	MB	DJ	21/10/25

*Registered Architect		
DHJ	Diane H Jones	NSW Arch 4778

Consultants

Client



Education

**Architect**  
PTW Architects  
Level 11, 88 Phillip Street  
Sydney NSW 2000 Australia  
T +61 2 9232 5877  
[ptw.com.au](http://ptw.com.au)

Peddie Thorp & Walker P/L  
ABN 23 000 454 624  
trading as PTW Architects

NSW Nominated Architects  
S Parsons Architect No.6098  
D Jones Architect No.4778



0 1 2 5 10 15m  
1 : 200 @ A1

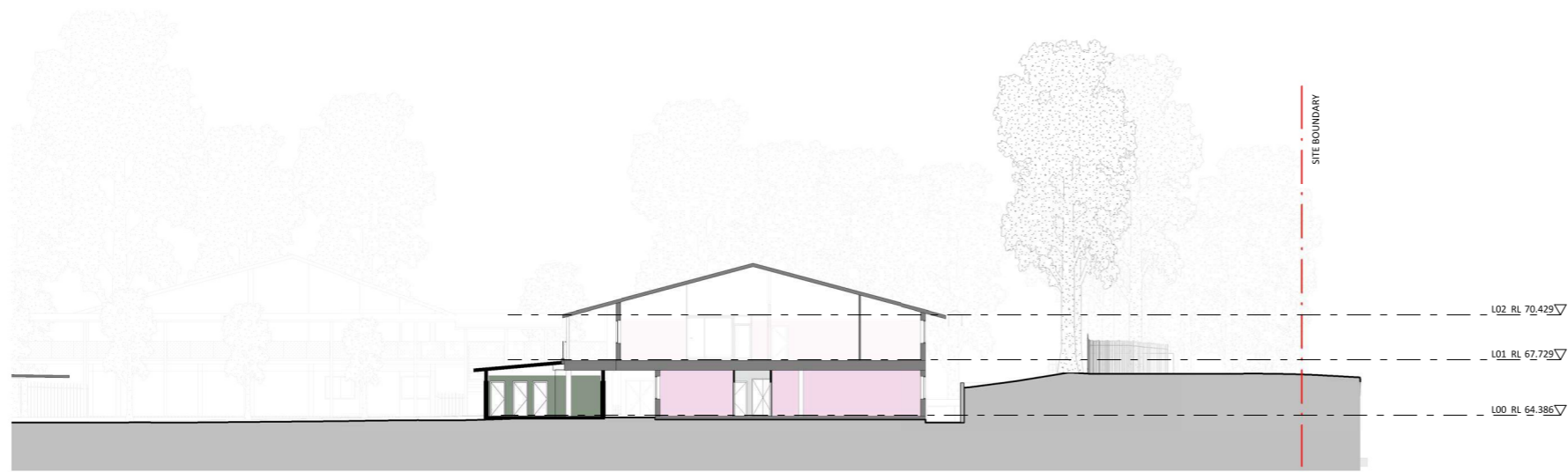
Project PA030471  
**GLENWOOD HIGH SCHOOL**  
FORMAN AVENUE, GLENWOOD, NSW  
2768

Status  
SSDA SUBMISSION

Title  
SSDA  
**BUILDING DEF - ELEVATIONS**

Drawing Number  
**DA-AR-E201**

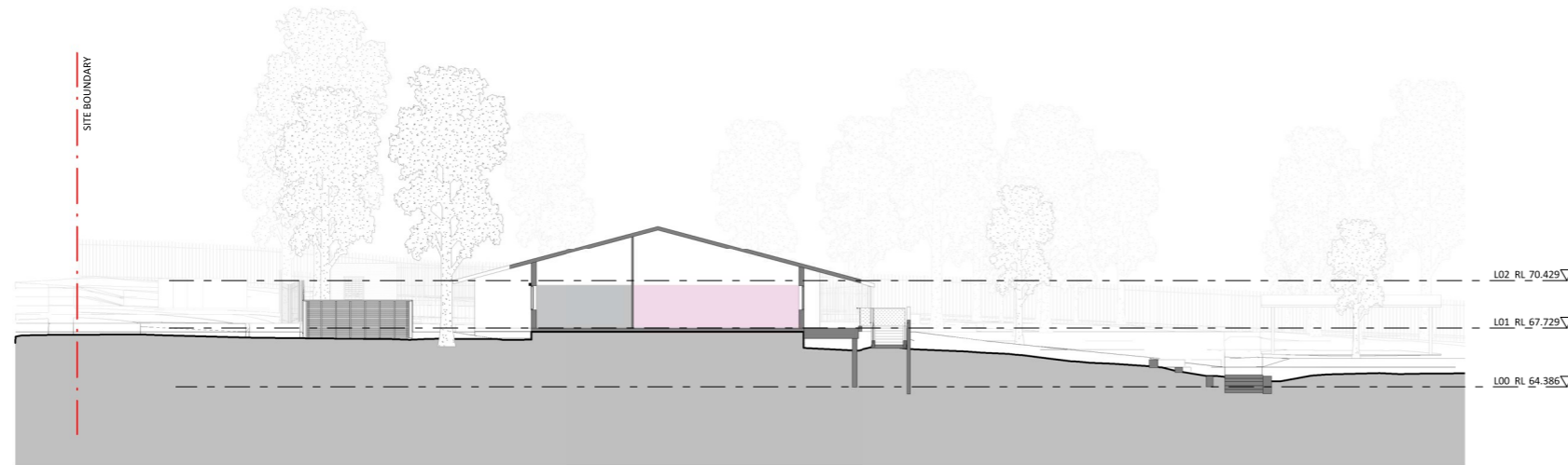
Revision  
**C**



1 SECTION 01  
1 : 200 @A1

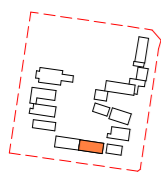


2 SECTION 02  
1 : 200 @A1



3 SECTION 03  
1 : 200 @A1

Key Plan:



**Drawing Disclaimer:**  
Do not scale from drawings.  
Verify all dimensions on site before commencing work.  
Copying or reproduction of this drawing is strictly prohibited without the consent of PTW Architects

**Note**  
PTW takes no responsibility for external building elements. Anything connected with any design, materials selection, construction or installation of any cladding, facade or external building element must be checked by and remains the responsibility of others, including suitably qualified experts as may be required.

Rev	Amendment	By	Chk*	Date
C	SSDA SUBMISSION	FJ	DJ	21/11/30
B	DRAFT SSDA SUBMISSION	MB	DJ	21/11/01
A	DRAFT SSDA SUBMISSION	MB	DJ	21/10/25

*Registered Architect		
DHJ	Diane H Jones	NSW Arch 4778

Consultants	

Client	



Education

**Architect**  
PTW Architects  
Level 11, 88 Phillip Street  
Sydney NSW 2000 Australia  
T +61 2 9232 5877  
[ptw.com.au](http://ptw.com.au)

Peddie Thorp & Walker P/L  
ABN 23 000 454 624  
trading as PTW Architects

NSW Nominated Architects  
S Parsons Architect No.6098  
D Jones Architect No.4778



0 1 2 5 10 15m  
1 : 200 @ A1

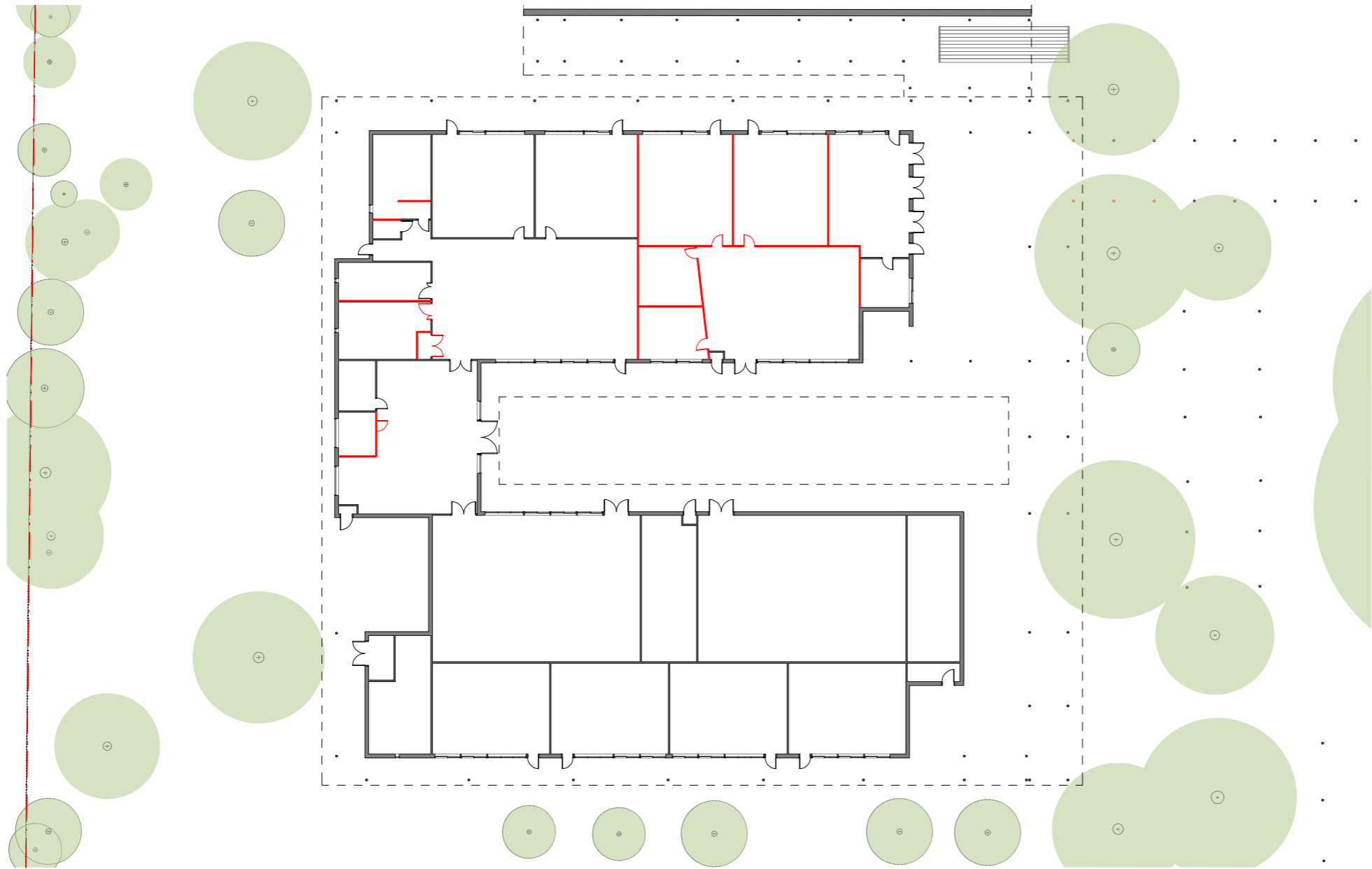
Project PA030471  
**GLENWOOD HIGH SCHOOL**  
FORMAN AVENUE, GLENWOOD, NSW  
2768

Status  
SSDA SUBMISSION

Title  
SSDA  
**BUILDING DEF - SECTIONS**

Drawing Number  
**DA-AR-E301**

Revision  
**C**



1 LEVEL 00 - DEMO PLAN  
1 : 200 @A1

Demolished wall



Department of Planning  
and Environment

Issued under the Environmental Planning and Assessment Act 1979

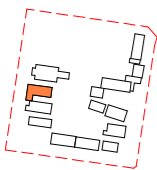
Application No: SSD-23512960

Sheet no: 18 of 40

Granted on: 25 August 2022

Signed: PA

Key Plan:



**Drawing Disclaimer:**  
Do not scale from drawings.  
Verify all dimensions on site before commencing work.  
Copying or reproduction of this drawing is strictly prohibited without the consent of PTW Architects

**Note**  
PTW takes no responsibility for external building elements. Anything connected with any design, materials selection, construction or installation of any cladding, facade or external building element must be checked by and remains the responsibility of others, including suitably qualified experts as may be required.

Rev	Amendment	By	Chk*	Date
D	SSDA SUBMISSION	FJ	DJ	21/11/10
C	DRAFT SSDA SUBMISSION	MB	DJ	21/11/01
B	DRAFT SSDA SUBMISSION	MB	DJ	21/10/25
A	DRAFT SSDA SUBMISSION	MB	DJ	21/10/01

\*Registered Architect  
DHJ Diane H Jones NSW Arch 4778

Consultants

Client



Education

Architect  
PTW Architects  
Level 11, 88 Phillip Street  
Sydney NSW 2000 Australia  
T +61 2 9232 5877  
[ptw.com.au](http://ptw.com.au)

Peddie Thorp & Walker P/L  
ABN 23 000 454 624  
trading as PTW Architects

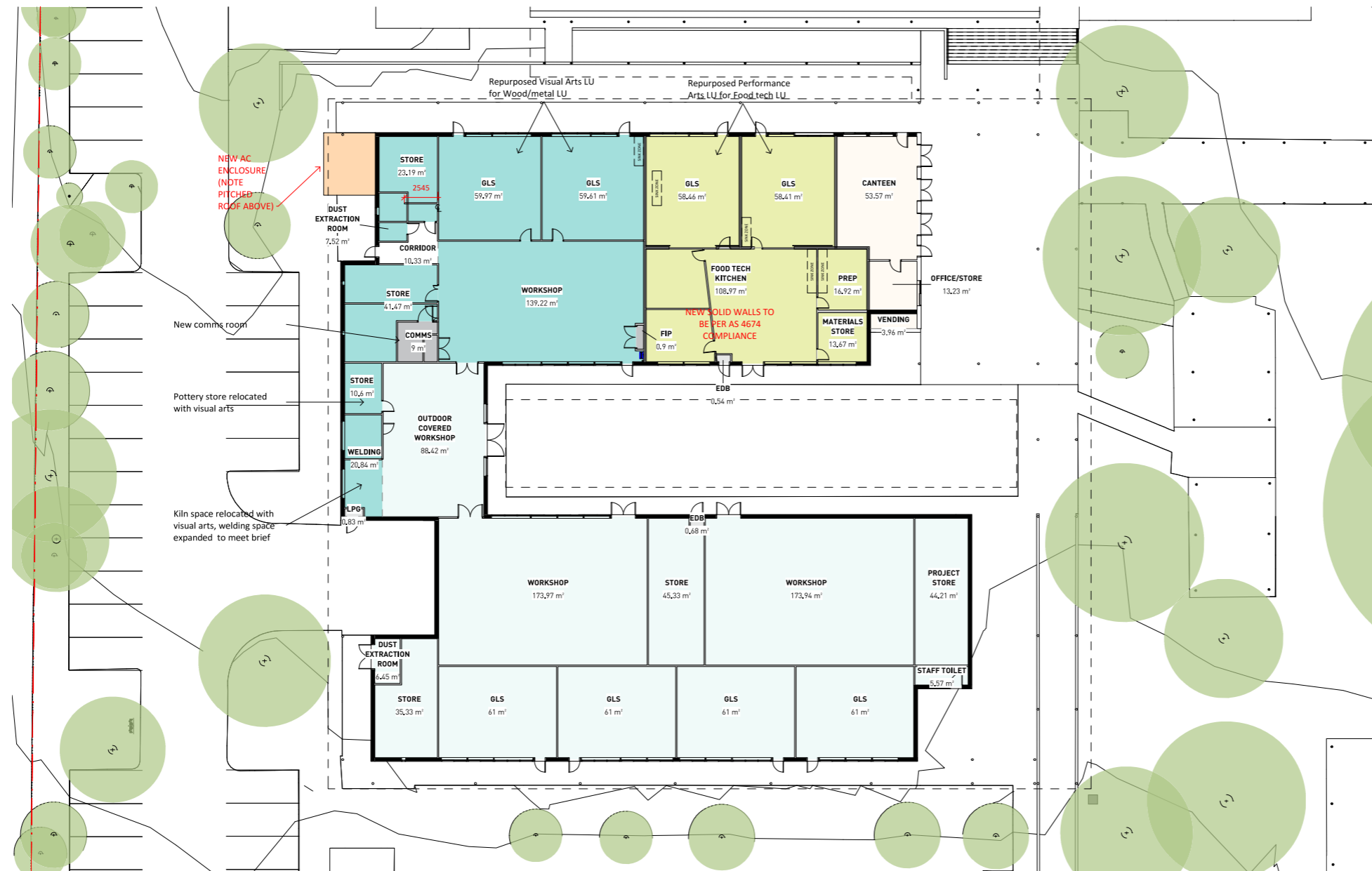
NSW Nominated Architects  
S Parsons Architect No.6098  
D Jones Architect No.4778

PTW

0 1 2 5 10 15m  
As indicated  
Project PA030471  
**GLENWOOD HIGH SCHOOL**  
FORMAN AVENUE, GLENWOOD, NSW  
2768  
Status  
SSDA SUBMISSION

Title  
SSDA  
**BUILDING HJ - DEMO PLAN -**  
**LEVEL 00**  
Drawing Number  
**DA-AR-HJ101**

Revision  
**D**



#### LEGEND

- NEW-FOOD TECH - MATERIALS LEARNING UNIT
- NEW-STORAGE UNIT / COMMS
- NEW-WOOD/METAL - MATERIALS LEARNING UNIT
- EXIST-CANTEEN UNIT
- EXIST-CIRCULATION
- EXIST-STORAGE UNIT / COMMS
- EXIST-WOOD/METAL - MATERIALS LEARNING UNIT

2 LEVEL 01 - GA  
1 : 200 @A1



Department of Planning  
and Environment

Issued under the Environmental Planning and Assessment Act 1979

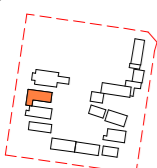
Application No: SSD-23512960

Sheet no: 19 of 40

Granted on: 25 August 2022

Signed: PA

Key Plan:



#### Drawing Disclaimer:

Do not scale from drawings.  
Verify all dimensions on site before commencing work.  
Copying or reproduction of this drawing is strictly  
prohibited without the consent of PTW Architects

#### Note

PTW takes no responsibility for external building  
elements. Anything connected with any design, materials  
selection, construction or installation of any cladding,  
facade or external building element must be checked by  
and remains the responsibility of others, including  
suitably qualified experts as may be required.

Rev	Amendment	By	Chk*	Date
D	SSDA SUBMISSION	FJ	DJ	21/11/10
C	DRAFT SSDA SUBMISSION	MB	DJ	21/11/01
B	DRAFT SSDA SUBMISSION	MB	DJ	21/10/25
A	DRAFT SSDA SUBMISSION	MB	DJ	21/10/01

#### \*Registered Architect

DHJ Diane H Jones NSW Arch 4778

#### Consultants

#### Client



Education

Architect  
PTW Architects  
Level 11, 88 Phillip Street  
Sydney NSW 2000 Australia  
T +61 2 9232 5877  
[ptw.com.au](http://ptw.com.au)

Peddie Thorp & Walker P/L  
ABN 23 000 454 624  
trading as PTW Architects

NSW Nominated Architects  
S Parsons Architect No.6098  
D Jones Architect No.4778

0 1 2 3 10 15m  
1 : 200 @ A1

Project PA030471  
**GLENWOOD HIGH SCHOOL**  
FORMAN AVENUE, GLENWOOD, NSW  
2768

Status  
SSDA SUBMISSION

Title  
SSDA  
**BUILDING HJ - GA - LEVEL 00**

Drawing Number  
**DA-AR-HJ102**

#### Revision

D



- LEGEND
- NEW-GENERAL LEARNING UNIT
  - NEW-SHARED LEARNING SPACE
  - NEW-OUTDOOR COVERED LEARNING
  - NEW-SCIENCE LEARNING UNIT
  - NEW-SCIENCE LABORATORY
  - NEW-SCIENCE STORE
  - NEW-STORAGE UNIT / COMMS
  - NEW-STUDENT AMENITIES
  - NEW-STAFF AMENITIES
  - NEW-VISUAL ARTS UNIT
  - NEW-VISUAL ARTS WORKSHOP
  - NEW-VISUAL ARTS STORE

1 LEVEL 00 - GA  
1 : 300 @A1



Department of Planning  
and Environment

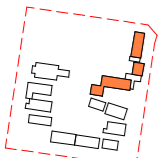
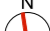

Issued under the Environmental Planning and Assessment Act 1979

Application No: SSD-23512960

Sheet no: 20 of 40

Granted on: 25 August 2022

Signed: PA

<div>Key Plan:</div> <div></div> <div><div>N</div><div></div></div>	<div>Drawing Disclaimer:</div> <div>Do not scale from drawings. Verify all dimensions on site before commencing work. Copying or reproduction of this drawing is strictly prohibited without the consent of PTW Architects</div>					<div>*Registered Architect</div> <div>DHJ   Diane H Jones   NSW Arch 4778</div>				<div>Consultants</div>				<div>Client</div> <div><div><div>NSW GOVERNMENT</div></div><div>Education</div></div>				<div>Architect</div> <div>PTW Architects Level 11, 88 Phillip Street Sydney NSW 2000 Australia T +61 2 9232 5877 <a href="http://ptw.com.au">ptw.com.au</a></div> <div><div><div><div><div><div></div></div><div>PTW</div></div><div><div>1 : 300 @ A1</div><div>Project   PA030471</div><div>GLENWOOD HIGH SCHOOL</div><div>FORMAN AVENUE, GLENWOOD, NSW</div><div>2768</div></div><div><div>Status</div><div>SSDA SUBMISSION</div></div></div></div></div>				<div>Title</div> <div>SSDA</div> <div>GA - LEVEL 00</div> <div><div>Drafting Number</div><div>DA-AR-N103</div></div>			
	<div>Note</div> <div>PTW takes no responsibility for external building elements. Anything connected with any design, materials selection, construction or installation of any cladding, facade or external building element must be checked by and remains the responsibility of others, including suitably qualified experts as may be required.</div>	<div>Rev</div> <div>C</div> <div>DRAFT SSDA SUBMISSION</div>	<div>By</div> <div>MB</div>	<div>Chk*</div> <div>DJ</div>	<div>Date</div> <div>21/11/01</div>	<div>Rev</div> <div>D</div> <div>SSDA SUBMISSION</div>	<div>By</div> <div>MB</div>	<div>Chk*</div> <div>DJ</div>	<div>Date</div> <div>21/11/10</div>																
		<div>B</div> <div>DRAFT SSDA SUBMISSION</div>	<div>MB</div>	<div>DJ</div>	<div>21/10/25</div>	<div>A</div> <div>DRAFT SSDA SUBMISSION</div>	<div>MB</div>	<div>DJ</div>	<div>21/10/01</div>																