




1 LEVEL 00 - DEMO PLAN  
1 : 200 @A1

Demolished wall



**Department of Planning  
and Environment**

*Issued under the Environmental Planning and Assessment Act 1979*

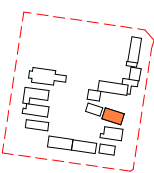
Application No: SSD-23512960

Sheet no: 10 of 40

Granted on: 25 August 2022

Signed: PA

Key Plan:



**Drawing Disclaimer:**  
Do not scale from drawings.  
Verify all dimensions on site before commencing work.  
Copying or reproduction of this drawing is strictly prohibited without the consent of PTW Architects

**Note**  
PTW takes no responsibility for external building elements. Anything connected with any design, materials selection, construction or installation of any cladding, facade or external building element must be checked by and remains the responsibility of others, including suitably qualified experts as may be required.

Rev	Amendment	By	Chk*	Date
D	SSDA SUBMISSION	FJ	DJ	21/11/10
C	DRAFT SSDA SUBMISSION	MB	DJ	21/11/01
B	DRAFT SSDA SUBMISSION	MB	DJ	21/10/25
A	DRAFT SSDA SUBMISSION	MB	DJ	21/10/01

*Registered Architect		
DHJ	Diane H Jones	NSW Arch 4778

Consultants

Client



Education

**Architect**  
PTW Architects  
Level 11, 88 Phillip Street  
Sydney NSW 2000 Australia  
T +61 2 9232 5877  
[ptw.com.au](http://ptw.com.au)

Peddie Thorp & Walker P/L  
ABN 23 000 454 624  
trading as PTW Architects

NSW Nominated Architects  
S Parsons Architect No.6098  
D Jones Architect No.4778



0 1 2 3 10 15m  
As Indicated @ A1  
Project PA030471  
**GLENWOOD HIGH SCHOOL**  
FORMAN AVENUE, GLENWOOD, NSW  
2768  
Status  
SSDA SUBMISSION

Title  
SSDA  
**BUILDING A - DEMO PLAN -**  
**LEVEL 00**  
Drawing Number  
**DA-AR-A101**

Revision  
**D**



- LEGEND
- NEW-SUPPORT LEARNING UNIT
  - EXIST-CIRCULATION
  - EXIST-GENERAL LEARNING UNIT
  - EXIST-STORAGE UNIT / COMMS
  - EXIST-STUDENT AMENITIES
  - EXIST-SUPPORT LEARNING UNIT

1 LEVEL 00 - GA  
1 : 200 @A1



Department of Planning  
and Environment

Issued under the Environmental Planning and Assessment Act 1979

Application No: SSD-23512960 Sheet no: 11 of 40  
Granted on: 25 August 2022 Signed: PA

Key Plan:

Drawing Disclaimer:  
Do not scale from drawings.  
Verify all dimensions on site before commencing work.  
Copying or reproduction of this drawing is strictly prohibited without the consent of PTW Architects

Note  
PTW takes no responsibility for external building elements. Anything connected with any design, materials selection, construction or installation of any cladding, facade or external building element must be checked by and remains the responsibility of others, including suitably qualified experts as may be required.

Rev	Amendment	By	Chk*	Date	*Registered Architect	Consultants	Client	Architect	Scale	Title	Status
D	SSDA SUBMISSION	FJ	DJ	21/11/10	DHJ Diane H Jones NSW Arch 4778			PTW Architects Level 11, 88 Phillip Street Sydney NSW 2000 Australia T +61 2 9232 5877 ptw.com.au	1 : 200 @ A1	SSDA BUILDING A - GA - LEVEL 00	SSDA SUBMISSION
C	DRAFT SSDA SUBMISSION	MB	DJ	21/11/01							
B	DRAFT SSDA SUBMISSION	MB	DJ	21/10/25							
A	DRAFT SSDA SUBMISSION	MB	DJ	21/10/01							

Architect  
PTW Architects  
Level 11, 88 Phillip Street  
Sydney NSW 2000 Australia  
T +61 2 9232 5877  
ptw.com.au

Peddle Thorp & Walker P/L  
ABN 23 000 454 624  
trading as PTW Architects

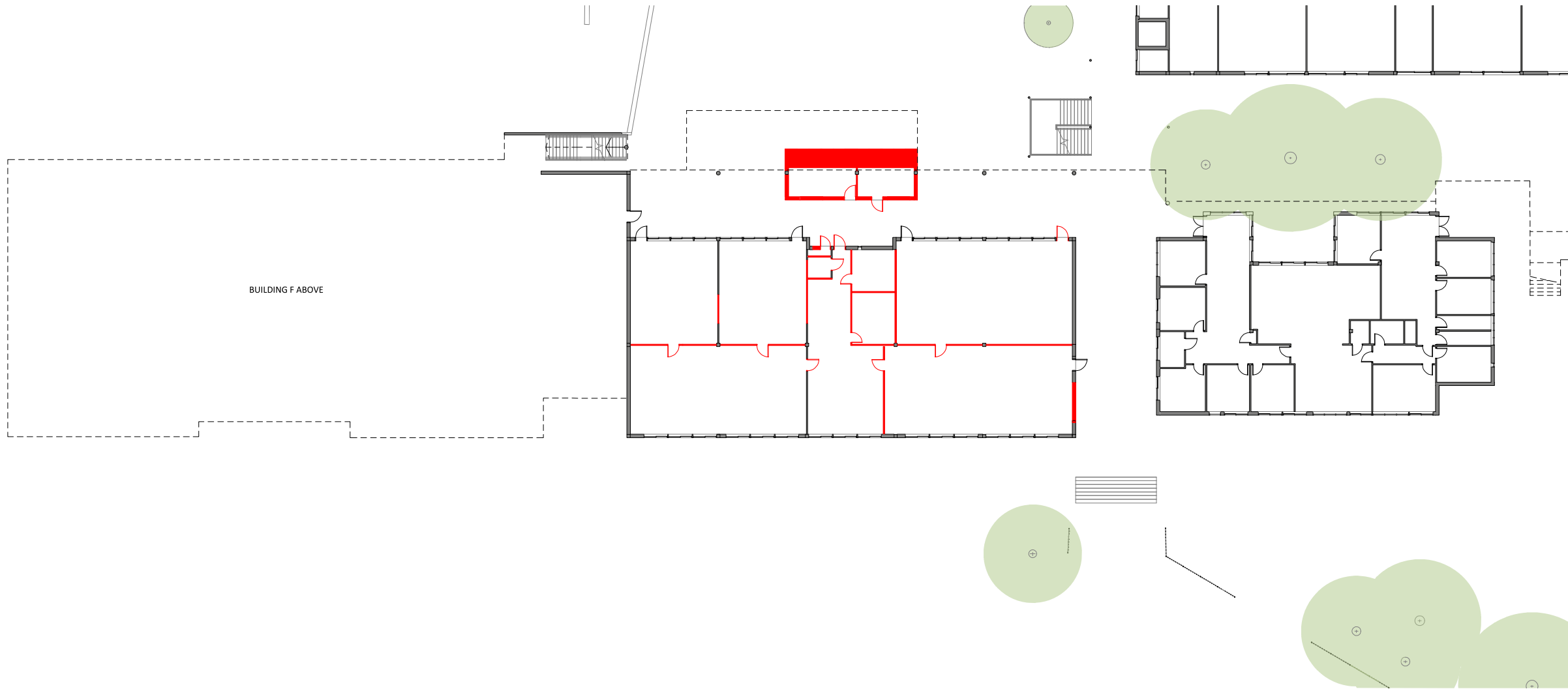
NSW Nominated Architects  
S Parsons Architect No.6098  
D Jones Architect No.4778

NSW GOVERNMENT  
Education

PTW

DA-AR-A102

D



1 BUILDING DE - LEVEL 00 - DEMO PLAN  
1 : 200 @A1

Demolished wall



Department of Planning  
and Environment

Issued under the Environmental Planning and Assessment Act 1979

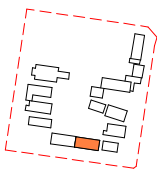
Application No: SSD-23512960

Sheet no: 11 of 40

Granted on: 25 August 2022

Signed: PA

Key Plan:



**Drawing Disclaimer:**  
Do not scale from drawings.  
Verify all dimensions on site before commencing work.  
Copying or reproduction of this drawing is strictly  
prohibited without the consent of PTW Architects

**Note**  
PTW takes no responsibility for external building  
elements. Anything connected with any design, materials  
selection, construction or installation of any cladding,  
facade or external building element must be checked by  
and remains the responsibility of others, including  
suitably qualified experts as may be required.

Rev	Amendment	By	Chk*	Date
D	SSDA SUBMISSION	FJ	DJ	21/11/10
C	DRAFT SSDA SUBMISSION	MB	DJ	21/11/01
B	DRAFT SSDA SUBMISSION	MB	DJ	21/10/25
A	DRAFT SSDA SUBMISSION	MB	DJ	21/10/01

**\*Registered Architect**  
DHJ Diane H Jones NSW Arch 4778

Consultants

Client



Education

**Architect**  
PTW Architects  
Level 11, 88 Phillip Street  
Sydney NSW 2000 Australia  
T +61 2 9232 5877  
[ptw.com.au](http://ptw.com.au)

Peddie Thorp & Walker P/L  
ABN 23 000 454 624  
trading as PTW Architects

NSW Nominated Architects  
S Parsons Architect No.6098  
D Jones Architect No.4778

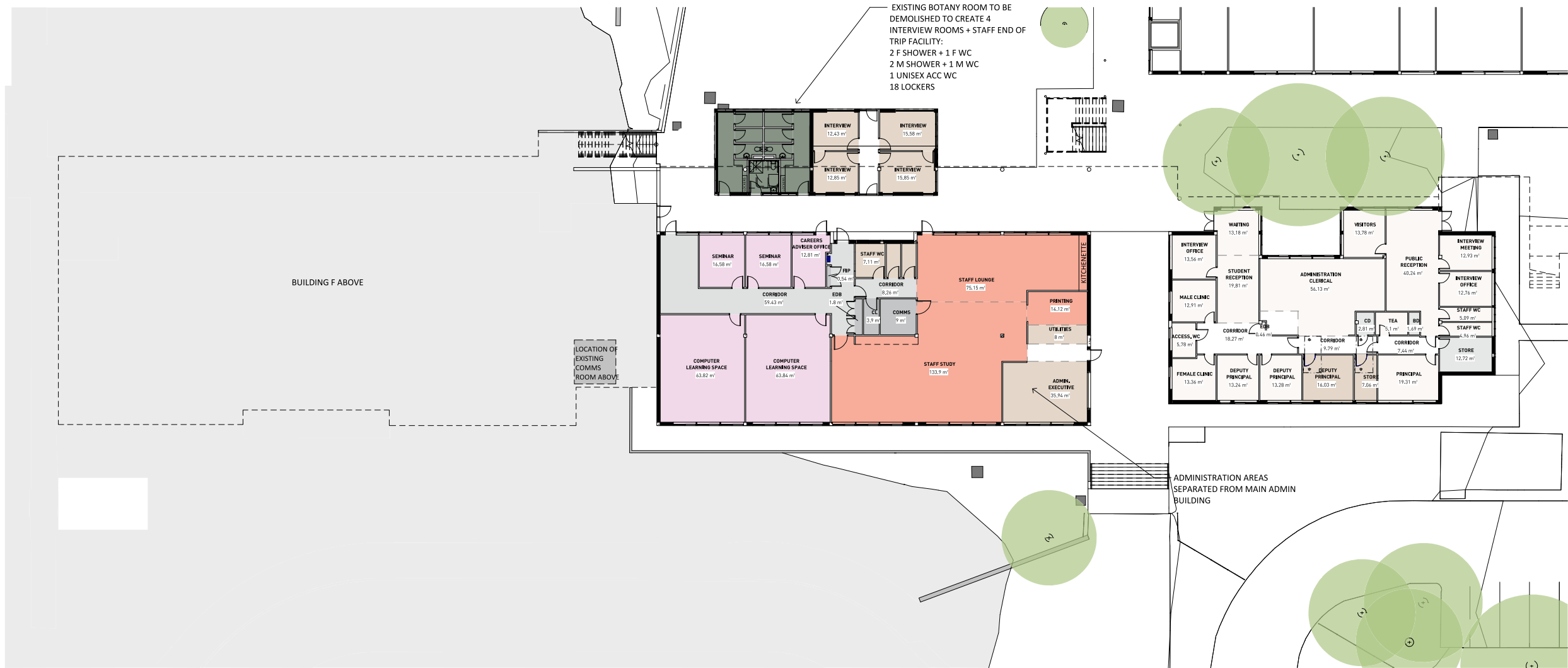
**PTW**

0 1 2 5 10 15m  
As indicated  
Project PA030471  
**GLENWOOD HIGH SCHOOL**  
FORMAN AVENUE, GLENWOOD, NSW  
2768  
Status  
SSDA SUBMISSION

Title  
SSDA  
**BUILDING DEF - DEMO PLAN -**  
**LEVEL 00**  
Drawing Number  
**DA-AR-E101**

Revision

D



1 BUILDING DE - GROUND FLOOR PLAN  
1 : 200 @A1



Department of Planning  
and Environment

Issued under the Environmental Planning and Assessment Act 1979

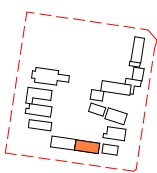
Application No: SSD-23512960

Sheet no: 11 of 40

Granted on: 25 August 2022

Signed: PA

Key Plan:



**Drawing Disclaimer:**  
Do not scale from drawings.  
Verify all dimensions on site before commencing work.  
Copying or reproduction of this drawing is strictly  
prohibited without the consent of PTW Architects

**Note**  
PTW takes no responsibility for external building  
elements. Anything connected with any design, materials  
selection, construction or installation of any cladding,  
facade or external building element must be checked by  
and remains the responsibility of others, including  
suitably qualified experts as may be required.

Rev	Amendment	By	Chk*	Date
D	SSDA SUBMISSION	FJ	DJ	21/11/10
C	DRAFT SSDA SUBMISSION	MB	DJ	21/11/01
B	DRAFT SSDA SUBMISSION	MB	DJ	21/10/25
A	DRAFT SSDA SUBMISSION	MB	DJ	21/10/01

\*Registered Architect  
DHJ Diane H Jones NSW Arch 4778

Consultants

Client



Education

Architect  
PTW Architects  
Level 11, 88 Phillip Street  
Sydney NSW 2000 Australia  
T +61 2 9232 5877  
[ptw.com.au](http://ptw.com.au)

Peddie Thorp & Walker P/L  
ABN 23 000 454 624  
trading as PTW Architects

NSW Nominated Architects  
S Parsons Architect No.6098  
D Jones Architect No.4778

0 1 2 5 10 15m  
1 : 200 @ A1

Project PA030471

**GLENWOOD HIGH SCHOOL**  
FORMAN AVENUE, GLENWOOD, NSW  
2768

Status  
SSDA SUBMISSION

Title  
SSDA

BUILDING DEF - GA - LEVEL 00

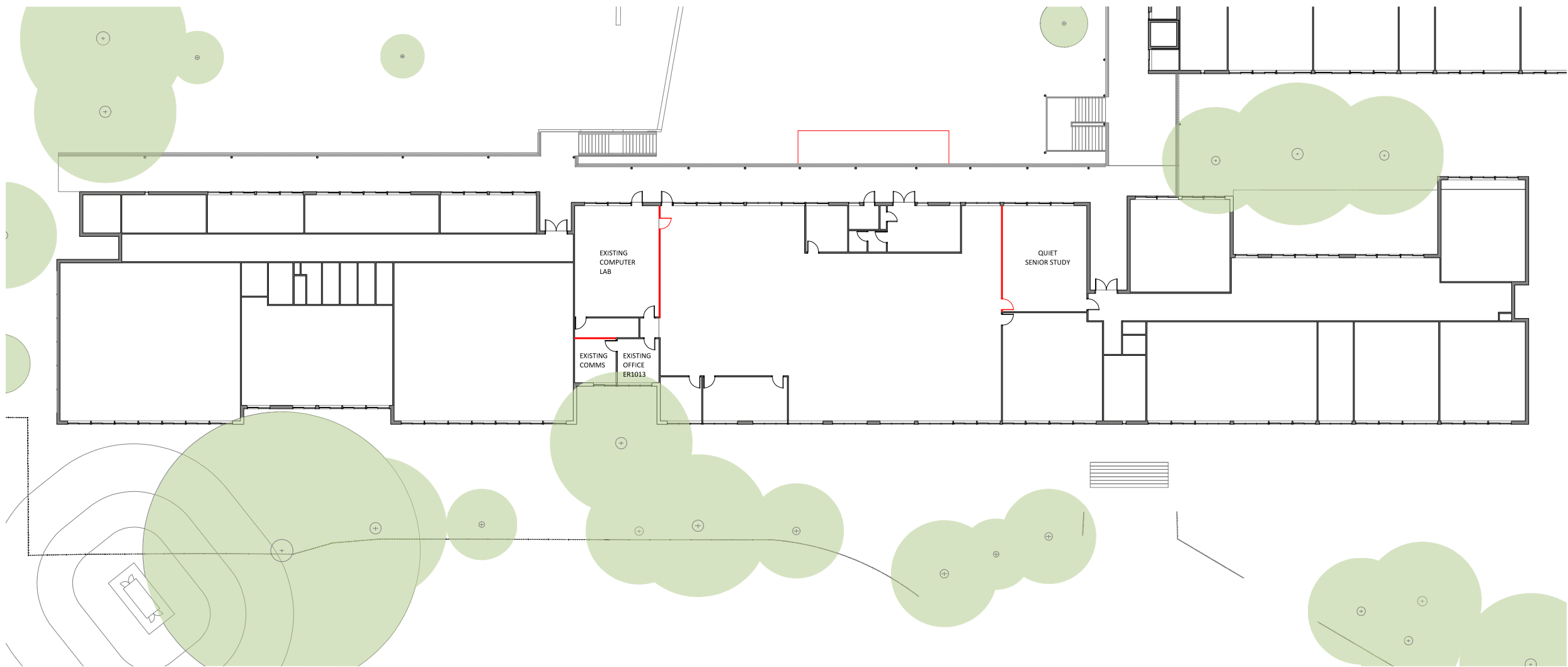
Drawing Number

DA-AR-E102

Revision

D





**1 BUILDING DEF - LEVEL 01 - DEMO PLAN**  
1 : 200 @A1

Demolished wall



**Department of Planning  
and Environment**

*Issued under the Environmental Planning and Assessment Act 1979*

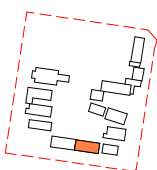
Application No: SSD-23512960

Sheet no: 14 of 40

Granted on: 25 August 2022

Signed: PA

Key Plan:



**Drawing Disclaimer:**  
Do not scale from drawings.  
Verify all dimensions on site before commencing work.  
Copying or reproduction of this drawing is strictly  
prohibited without the consent of PTW Architects

**Note**  
PTW takes no responsibility for external building  
elements. Anything connected with any design, materials  
selection, construction or installation of any cladding,  
facade or external building element must be checked by  
and remains the responsibility of others, including  
suitably qualified experts as may be required.

Rev	Amendment	By	Chk*	Date
D	SSDA SUBMISSION	FJ	DJ	21/11/10
C	DRAFT SSDA SUBMISSION	MB	DJ	21/11/01
B	DRAFT SSDA SUBMISSION	MB	DJ	21/10/25
A	DRAFT SSDA SUBMISSION	MB	DJ	21/10/01

*Registered Architect		
DHJ	Diane H Jones	NSW Arch 4778

Consultants

Client



**Education**

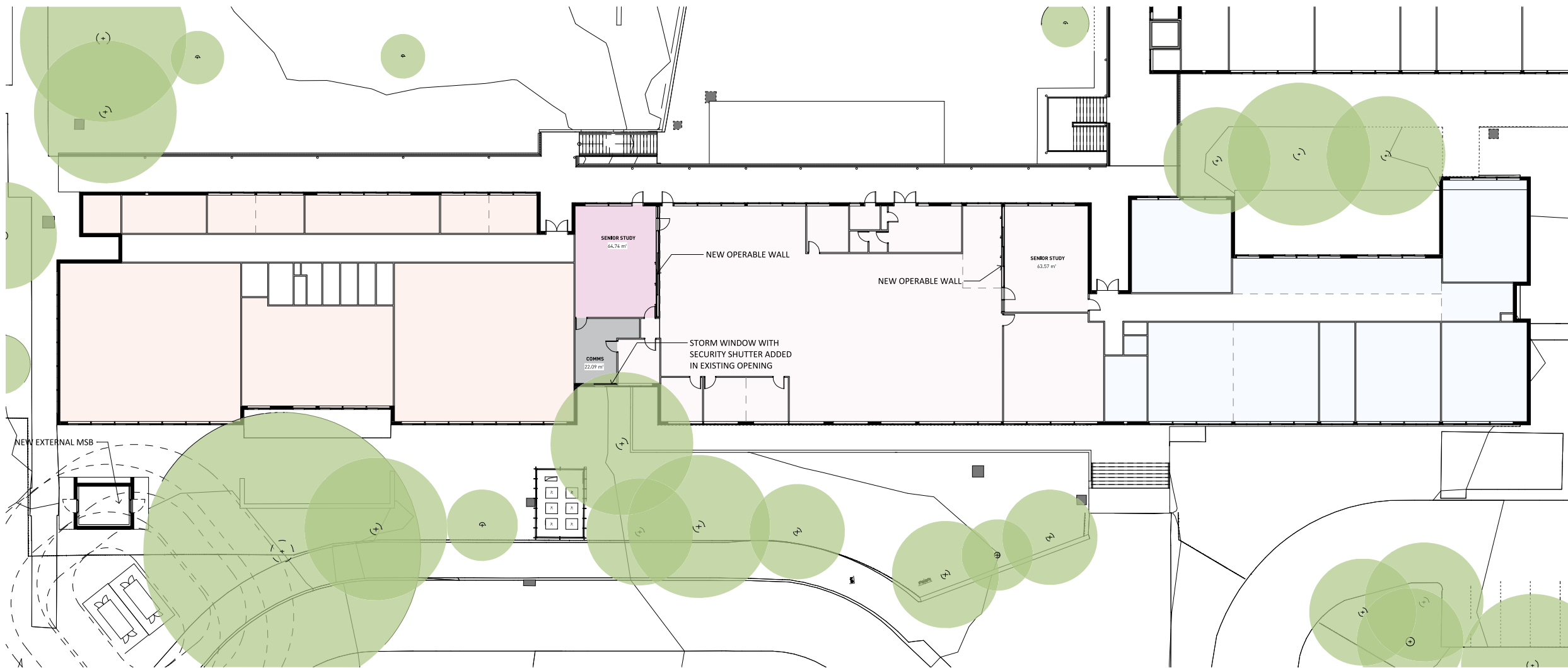
**Architect**  
PTW Architects  
Level 11, 88 Phillip Street  
Sydney NSW 2000 Australia  
T +61 2 9232 5877  
[ptw.com.au](http://ptw.com.au)



As indicated  
Project PA030471  
FORMAN AVENUE, GLENWOOD, NSW  
2768  
Status  
SSDA SUBMISSION

Title  
SSDA  
BUILDING DEF - DEMO PLAN -  
LEVEL 01  
Drawing Number  
DA-AR-E111

Revision  
**D**



- LEGEND
- NEW-LIBRARY UNIT
  - NEW-STORAGE UNIT / COMMS
  - EXIST-CIRCULATION
  - EXIST-GENERAL LEARNING UNIT
  - EXIST-LIBRARY UNIT
  - EXIST-STAFF UNIT

1 BUILDING E - LEVEL 01 - GA  
1 : 200 @A1

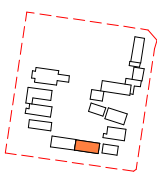


Department of Planning  
and Environment

Issued under the Environmental Planning and Assessment Act 1979

Application No: SSD-23512960 Sheet no: 15 of 40  
Granted on: 25 August 2022 Signed: PA

Key Plan:



**Drawing Disclaimer:**  
Do not scale from drawings.  
Verify all dimensions on site before commencing work.  
Copying or reproduction of this drawing is strictly  
prohibited without the consent of PTW Architects

**Note**  
PTW takes no responsibility for external building  
elements. Anything connected with any design, materials  
selection, construction or installation of any cladding,  
facade or external building element must be checked by  
and remains the responsibility of others, including  
suitably qualified experts as may be required.

Rev	Amendment	By	Chk*	Date
D	SSDA SUBMISSION	FJ	DJ	21/11/10
C	DRAFT SSDA SUBMISSION	MB	DJ	21/11/01
B	DRAFT SSDA SUBMISSION	MB	DJ	21/10/25
A	DRAFT SSDA SUBMISSION	MB	DJ	21/10/01

\*Registered Architect  
DHJ Diane H Jones NSW Arch 4778

Consultants

Client



Education

Architect  
PTW Architects  
Level 11, 88 Phillip Street  
Sydney NSW 2000 Australia  
T +61 2 9232 5877  
[ptw.com.au](http://ptw.com.au)

Peddie Thorp & Walker P/L  
ABN 23 000 454 624  
trading as PTW Architects

NSW Nominated Architects  
S Parsons Architect No.6098  
D Jones Architect No.4778

0 1 2 5 10 15m  
1 : 200 @ A1  
Project PA030471  
**GLENWOOD HIGH SCHOOL**  
FORMAN AVENUE, GLENWOOD, NSW  
2768  
Status  
SSDA SUBMISSION

Title  
SSDA  
**BUILDING DEF - GA - LEVEL 01**  
Drawing Number  
**DA-AR-E112**

Revision  
**D**