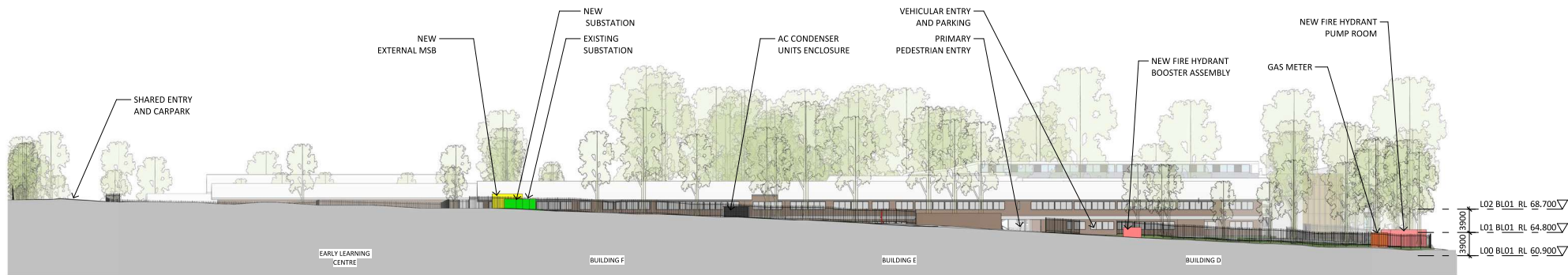




1 ELEVATION FROM GLENWOOD PARK DRIVE
1 : 500 @A1



2 ELEVATION FROM FORMAN AVENUE
1 : 500 @A1



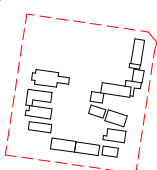
Department of Planning
and Environment

Issued under the Environmental Planning and Assessment Act 1979

Application No: SSD-23512960 Sheet no: 7 of 40

Granted on: 25 August 2022 Signed: PA

Key Plan:



Drawing Disclaimer:
Do not scale from drawings.
Verify all dimensions on site before commencing work.
Copying or reproduction of this drawing is strictly prohibited without the consent of PTW Architects

Note
PTW takes no responsibility for external building elements. Anything connected with any design, materials selection, construction or installation of any cladding, facade or external building element must be checked by and remains the responsibility of others, including suitably qualified experts as may be required.

Rev	Amendment	By	Chk*	Date
D	SSDA SUBMISSION	FJ	DJ	21/11/10
C	DRAFT SSDA SUBMISSION	MB	DJ	21/11/01
B	DRAFT SSDA SUBMISSION	MB	DJ	21/10/25
A	DRAFT SSDA SUBMISSION	MB	DJ	21/10/01

***Registered Architect**
DHJ Diane H Jones NSW Arch 4778

Consultants

Client



Education

Architect
PTW Architects
Level 11, 88 Phillip Street
Sydney NSW 2000 Australia
T +61 2 9232 5877
ptw.com.au

Peddie Thorp & Walker P/L
ABN 23 000 454 624
trading as PTW Architects

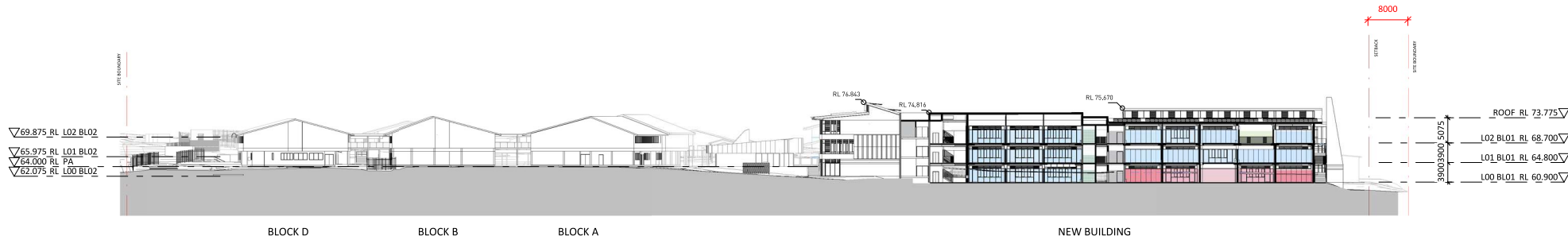
NSW Nominated Architects
S Parsons Architect No.6098
D Jones Architect No.4778



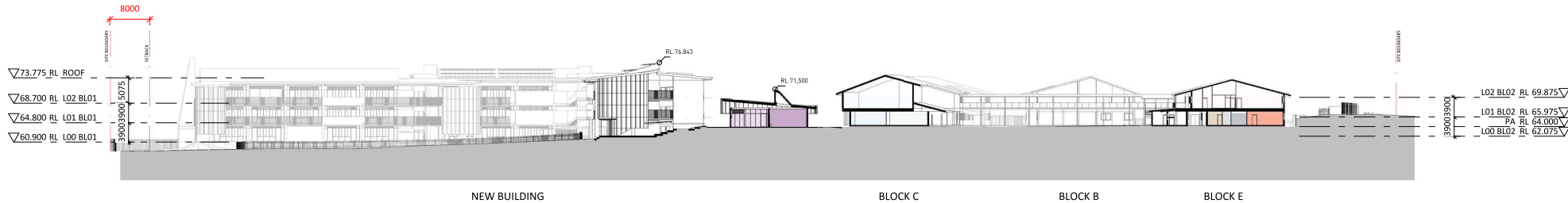
0 1 2 5 8m
1 : 500 @ A1
Project PA030471
GLENWOOD HIGH SCHOOL
FORMAN AVENUE, GLENWOOD, NSW
2768
Status
SSDA SUBMISSION

Title
SSDA
STREET ELEVATION
Drawing Number
DA-AR-0201

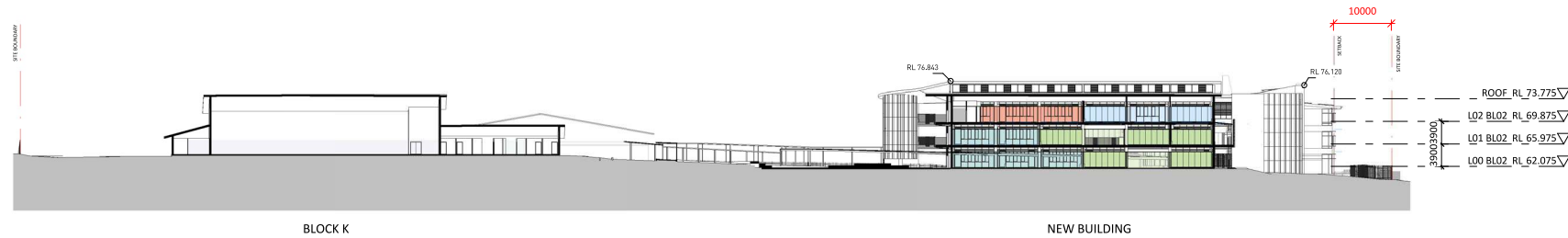
Revision
D



1 SECTION A
1 : 600



2 SECTION B
1 : 600



3 SECTION C
1 : 600

LEGEND

- NEW-GENERAL LEARNING UNIT
- NEW-SHARED LEARNING SPACE
- NEW-OUTDOOR COVERED LEARNING
- NEW-STORAGE UNIT / COMMS
- NEW-STUDENT AMENITIES
- NEW-VISUAL ARTS UNIT
- NEW-VISUAL ARTS WORKSHOP
- NEW-VISUAL ARTS STORE

LEGEND

- NEW-ADMINISTRATION UNIT
- NEW-CIRCULATION
- NEW-PERFORMING ARTS UNIT
- NEW-PERFORM ARTS WORKSHOP
- NEW-STAFF UNIT
- NEW-STORAGE UNIT / COMMS
- EXIST-FITNESS LEARNING UNI
- EXIST-GENERAL LEARNING UNIT
- EXIST-LIBRARY UNIT
- EXIST-STUDENT AMENITIES

LEGEND

- NEW-GENERAL LEARNING UNIT
- NEW-SHARED LEARNING SPACE
- NEW-OUTDOOR COVERED LEARNING
- NEW-SCIENCE LEARNING UNIT
- NEW-SCIENCE LABORATORY
- NEW-STAFF UNIT
- NEW-STORAGE UNIT / COMMS
- NEW-STAFF AMENITIES
- EXIST-MOVEMENT COMPLEX
- EXIST-STUDENT AMENITIES



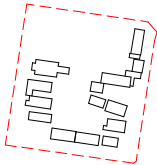
Department of Planning
and Environment

Issued under the Environmental Planning and Assessment Act 1979

Application No: SSD-23512960 Sheet no: 8 of 40

Granted on: 25 August 2022 Signed: PA

Key Plan:



Drawing Disclaimer:
Do not scale from drawings.
Verify all dimensions on site before commencing work.
Copying or reproduction of this drawing is strictly prohibited without the consent of PTW Architects

Note
PTW takes no responsibility for external building elements. Anything connected with any design, materials selection, construction or installation of any cladding, facade or external building element must be checked by and remains the responsibility of others, including suitably qualified experts as may be required.

Rev	Amendment	By	Chk*	Date
D	SSDA SUBMISSION	FJ	DJ	21/11/10
C	DRAFT SSDA SUBMISSION	MB	DJ	21/11/01
B	DRAFT SSDA SUBMISSION	MB	DJ	21/10/25
A	DRAFT SSDA SUBMISSION	MB	DJ	21/10/01

*Registered Architect
DHJ Diane H Jones NSW Arch 4778

Consultants

Client



Education

Architect
PTW Architects
Level 11, 88 Phillip Street
Sydney NSW 2000 Australia
T +61 2 9232 5877
ptw.com.au

Peddie Thorp & Walker P/L
ABN 23 000 454 624
trading as PTW Architects

NSW Nominated Architects
S Parsons Architect No.6098
D Jones Architect No.4778

PTW

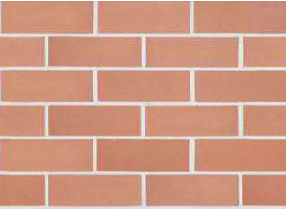
0 36 48
1 : 600 @ A1
Project PA030471
GLENWOOD HIGH SCHOOL
FORMAN AVENUE, GLENWOOD, NSW
2768
Status
SSDA SUBMISSION

Title
SSDA
SITE SECTIONS

Drawing Number
DA-AR-0301

Revision
D

New building and Performance arts



BRK-101

Austral Brick
Smooth face brick
Symmetry 'Terracotta'



PAV-101

Concrete /porcelain tiles on
pedestals for access
balconies



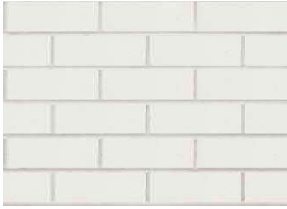
RWS-201

Galvanised steel water pipe
and brackets with colorbond
steel down pipe transitions
from gutter



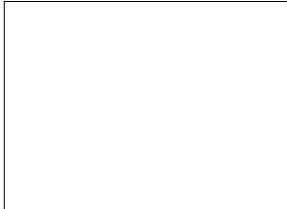
EWS-102

Acoustic Louvres,
Clear Anodised Finish



BRK-102
BRK-103 - SOLDIER COURSE

Austral Brick
Smooth face brick
La Paloma 'Miro'



EWS-101

Universal Anodisers
Anodised aluminium frame
Clear finish



SCN-101

Arcadia
Match Sun-Shading
*'Arcadia Match Sun-Shading
Grating Panels'*



RFS-101
RWS-101

Lysaght
Longline 305 for roof
Colorbond Matt 'Basalt'



BRK-104 - COLOURS TBC -SOLDIER COURSE

Austral Brick
White Glazed Brick
Colours to be selected



CLG-301 CLG-302

Dominion and SnapSeam
for Soffit Linings
(Standing Seam)
Colour TBC



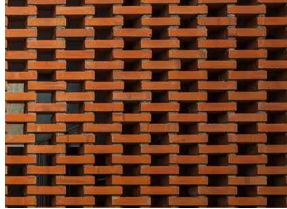
SCN-102

Arcadia
Louvres Aluminium Extruded
box section aluminium
Colours to be confirmed



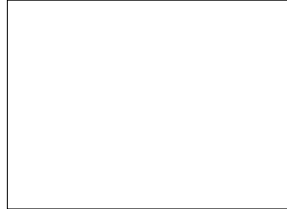
BAL-101

Aluminium slat balustrade
panels with galvanised steel
framing



BRK-107 - HIT AND MISS BRICKWORK

Austral Brick
Smooth face brick
Symmetry 'Terracotta'



GLS-101

Viridian Comfort Plus:
Laminated Glass with
Low E Coating, Neutral 59



EWS-201

Fixed metal louvre
in framing system



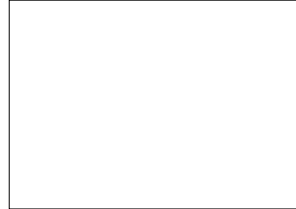
ELG-101 ELG-103

Dominion and SnapSeam
panels for wall framing and
panelling
Colours TBC



CON-101

Concrete framing
Keim finish for longevity and quality



GLS-103

Viridian VTough:
Toughened Glass with
Low E Coating, Neutral 59



GLS-102

Viridian Comfort Plus: Laminated
Glass with Low E Coating, Trans-
lucent

New building



ELG-401

Aboriginal weaving
by Jayne Christian
Inspiration for modelled perforated
metal screens



SCN-201 SCN-202

Arcadia: Profiled, Perforated
Metal Screens and Support System,
Colours to be confirmed



ELG-401

Glazed Tile
For core walls

Colours to be selected



ELG-201

Aluminium cladding
Anodised



ELG-402

Glazed Tile
Art mural on eastern core wall



CON-201

Concrete relief art wall
Pattern to be confirmed
Keim finish for longevity and quality

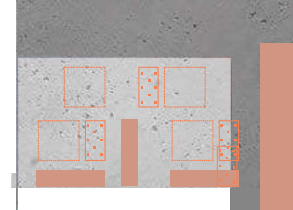
Brick
Smooth face brick



SCN-203

Perforated Metal - Art pattern
Arcadia: Profiled, Perforated Metal
Screens and Support System,
Colours and pattern to be confirmed

Viridian Comfort Plus
Laminated glass
Low E coating



CON - 301

Concrete bleacher seating

Austral Brick
Smooth face brick
La Paloma 'Miro'



Universal Anodisers
Anodised aluminium frame
'Satin Quarry Brige'

Austral Brick
Concrete Block - smooth
GB Honed 'Porcelain'



Cemintel
Cemintel Surround
'Whiteish Base finish'

CLT Frame
Cross Laminated Timber (CLT)

Coolite
Aluminium
'Satin Quarry'



Department of Planning
and Environment

Issued under the Environmental Planning and Assessment Act 1979

Application No: SSD-23512960

Sheet no: 9 of 40

Granted on: 25 August 2022

Signed: PA

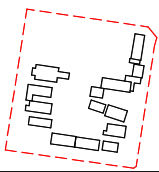
Arcadia
Match Sun-Shading
Grating Panels'

Louvres Aluminium Extruded
box section aluminium
'Zest Rectangular Sun Blade'

Longline 305
Colorbond 'Monument'

Lysaght
Klip-Lok 7
Colorbond

Key Plan:



Drawing Disclaimer:
Do not scale from drawings.
Verify all dimensions on site before commencing work.
Copying or reproduction of this drawing is strictly
prohibited without the consent of PTW Architects

Note
PTW takes no responsibility for external building
elements. Anything connected with any design, materials
selection, construction or installation of any cladding,
facade or external building element must be checked by
and remains the responsibility of others, including
suitably qualified experts as may be required.

Rev	Amendment	By	Chk*	Date
B	SSDA SUBMISSION	MB	DJ	21/10/20
E	DRAFT SSDA SUBMISSION	MB	DJ	21/10/01
B	DRAFT SSDA SUBMISSION	MB	DJ	21/10/25
A	DRAFT SSDA SUBMISSION	MB	DJ	21/10/01

*Registered Architect
DHJ Diane H Jones NSW Arch 4778

Consultants

Client



Education

Architect
PTW Architects
Level 11, 88 Phillip Street
Sydney NSW 2000 Australia
T +61 2 9232 5877
ptw.com.au

Peddie Thorp & Walker P/L
ABN 23 000 454 624
trading as PTW Architects

NSW Nominated Architects
S Parsons Architect No.5098
D Jones Architect No.4778

Project PA030471
GLENWOOD HIGH SCHOOL
FORMAN AVENUE, GLENWOOD, NSW
2768

Status
SSDA SUBMISSION

Title	SSDA
MATERIALS BOARD	
Drawing Number	DA-AR-0501
Revision	B