


- TREE HIGH PRIORITY
- TREE MEDIUM PRIORITY
- TREE LOW PRIORITY
- TREE - REMOVED FOR SSDA
- TREE - REMOVED FOR DA
- DEMOLISHED COVERED WALKWAY
- REMOVED DEMOUNTABLES

1 SITE PLAN - DEMO
1 : 600



Department of Planning
and Environment

Issued under the Environmental Planning and Assessment Act 1979

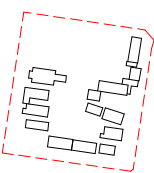
Application No: SSD-23512960

Sheet no: 1 of 40

Granted on: 25 August 2022

Signed: PA

Key Plan:



Drawing Disclaimer:
Do not scale from drawings.
Verify all dimensions on site before commencing work.
Copying or reproduction of this drawing is strictly prohibited without the consent of PTW Architects

Note
PTW takes no responsibility for external building elements. Anything connected with any design, materials selection, construction or installation of any cladding, facade or external building element must be checked by and remains the responsibility of others, including suitably qualified experts as may be required.

Rev	Amendment	By	Chk*	Date
D	SSDA SUBMISSION	FJ	DJ	21/11/10
C	DRAFT SSDA SUBMISSION	MB	DJ	21/11/01
B	DRAFT SSDA SUBMISSION	MB	DJ	21/10/25
A	DRAFT SSDA SUBMISSION	MB	DJ	21/10/01

*Registered Architect
DHJ Diane H Jones NSW Arch 4778

Consultants

Client



Education

Architect
PTW Architects
Level 11, 88 Phillip Street
Sydney NSW 2000 Australia
T +61 2 9232 5877
ptw.com.au

Peddie Thorp & Walker P/L
ABN 23 000 454 624
trading as PTW Architects

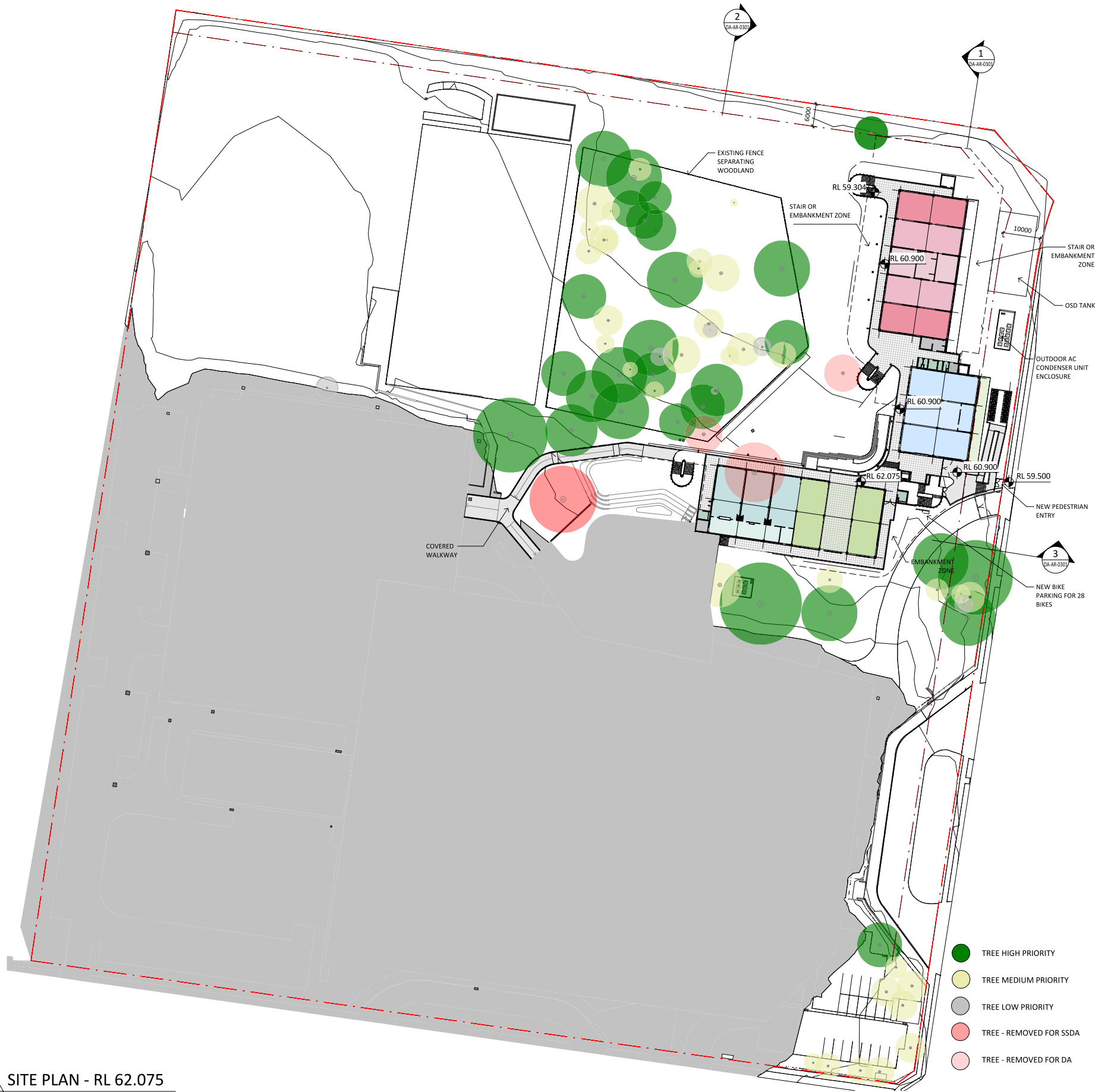
NSW Nominated Architects
S Parsons Architect No.6098
D Jones Architect No.4778



0 36 48
As Indicated
Project PA030471
GLENWOOD HIGH SCHOOL
FORMAN AVENUE, GLENWOOD, NSW
2768
Status
SSDA SUBMISSION

Title
SSDA
SITE PLAN - ROOF DEMO
Drawing Number
DA-AR-0010

Revision
D



LEGEND

- ACCESSIBLE WC
- COMMS
- GENERAL LEARNING SPACE
- SCIENCE GENERAL LEARNING SPACE
- SENIOR SHARED LEARNING
- STAFF AMENITIES
- STORAGE UNIT / COMMS
- STUDENT AMENITIES
- VISUAL ARTS GENERAL LEARNING SPACE
- VISUAL ARTS WORKSHOP

- TREE HIGH PRIORITY
- TREE MEDIUM PRIORITY
- TREE LOW PRIORITY
- TREE - REMOVED FOR SSDA
- TREE - REMOVED FOR DA

1 SITE PLAN - RL 62.075
1 : 600 @A1

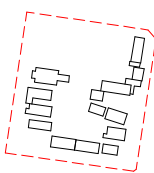


Department of Planning
and Environment

Issued under the Environmental Planning and Assessment Act 1979

Application No: SSD-23512960 Sheet no: 2 of 40
Granted on: 25 August 2022 Signed: PA

Key Plan:



Drawing Disclaimer:
Do not scale from drawings.
Verify all dimensions on site before commencing work.
Copying or reproduction of this drawing is strictly prohibited without the consent of PTW Architects

Note
PTW takes no responsibility for external building elements. Anything connected with any design, materials selection, construction or installation of any cladding, facade or external building element must be checked by and remains the responsibility of others, including suitably qualified experts as may be required.

Rev	Amendment	By	Chk*	Date
D	SSDA SUBMISSION	FJ	DJ	21/11/10
C	DRAFT SSDA SUBMISSION	MB	DJ	21/11/01
B	DRAFT SSDA SUBMISSION	MB	DJ	21/10/25
A	DRAFT SSDA SUBMISSION	MB	DJ	21/10/01

*Registered Architect
DHJ Diane H Jones NSW Arch 4778

Consultants

Client



Education

Architect
PTW Architects
Level 11, 88 Phillip Street
Sydney NSW 2000 Australia
T +61 2 9232 5877
ptw.com.au

Peddie Thorp & Walker P/L
ABN 23 000 454 624
trading as PTW Architects

NSW Nominated Architects
S Parsons Architect No.6098
D Jones Architect No.4778

PTW

As Indicated
Project PA030471
GLENWOOD HIGH SCHOOL
FORMAN AVENUE, GLENWOOD, NSW
2768
Status
SSDA SUBMISSION

Title
SSDA
SITE PLAN - RL 62.075
Drawing Number
DA-AR-0020

Revision
D



LEGEND

- NEW-ADMINISTRATION UNIT
- NEW-CIRCULATION
- NEW-FOOD TECH - MATERIALS LEARNING UNIT
- NEW-GENERAL LEARNING UNIT
- NEW-SHARED LEARNING SPACE
- NEW-LIBRARY UNIT
- NEW-OUTDOOR COVERED LEARNING
- NEW-PERFORMING ARTS UNIT
- NEW-PERFORM ARTS WORKSHOP
- NEW-PERFORM ARTS STORE
- NEW-SCIENCE LEARNING UNIT
- NEW-SCIENCE LABORATORY
- NEW-SCIENCE STORE
- NEW - STAFF AMENITY
- NEW-STAFF UNIT
- NEW-STORAGE UNIT / COMMS
- NEW-STUDENT AMENITIES
- NEW-STAFF AMENITIES
- NEW-SUPPORT LEARNING UNIT
- NEW-WOOD/METAL - MATERIALS LEARNING UNIT
- EXIST-ADMINISTRATION
- EXIST-CANTEEN UNIT
- EXIST-CIRCULATION
- EXIST-FITNESS LEARNING UNI
- EXIST-GENERAL LEARNING UNIT
- EXIST-MOVEMENT COMPLEX
- EXIST-STORAGE UNIT / COMMS
- EXIST-STUDENT AMENITIES
- EXIST-SUPPORT LEARNING UNIT
- EXIST-WOOD/METAL - MATERIALS LEARNING UNIT

- TREE HIGH PRIORITY
- TREE MEDIUM PRIORITY
- TREE LOW PRIORITY
- TREE - REMOVED FOR SSDA
- TREE - REMOVED FOR DA

1 SITE PLAN - RL 65.975
1 : 600 @A1

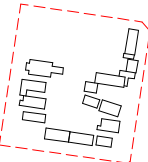


Department of Planning
and Environment

Issued under the Environmental Planning and Assessment Act 1979

Application No: SSD-23512960 Sheet no: 3 of 40
Granted on: 25 August 2022 Signed: PA

Key Plan:



Drawing Disclaimer:
Do not scale from drawings.
Verify all dimensions on site before commencing work.
Copying or reproduction of this drawing is strictly prohibited without the consent of PTW Architects
Note
PTW takes no responsibility for external building elements. Anything connected with any design, materials selection, construction or installation of any cladding, facade or external building element must be checked by and remains the responsibility of others, including suitably qualified experts as may be required.

Rev	Amendment	By	Chk*	Date
D	SSDA SUBMISSION	FJ	DJ	21/11/10
C	DRAFT SSDA SUBMISSION	MB	DJ	21/11/01
B	DRAFT SSDA SUBMISSION	MB	DJ	21/10/25
A	DRAFT SSDA SUBMISSION	MB	DJ	21/10/01

*Registered Architect
DHJ Diane H Jones NSW Arch 4778

Consultants

Client



Education

Architect
PTW Architects
Level 11, 88 Phillip Street
Sydney NSW 2000 Australia
T +61 2 9232 5877
ptw.com.au

Peddie Thorp & Walker P/L
ABN 23 000 454 624
trading as PTW Architects
NSW Nominated Architects
S Parsons Architect No.6098
D Jones Architect No.4778



0 36 48
As Indicated
Project PA030471
GLENWOOD HIGH SCHOOL
FORMAN AVENUE, GLENWOOD, NSW
2768
Status
SSDA SUBMISSION

Title
SSDA
SITE PLAN - RL 65.975
Drawing Number
DA-AR-0021

Revision
D