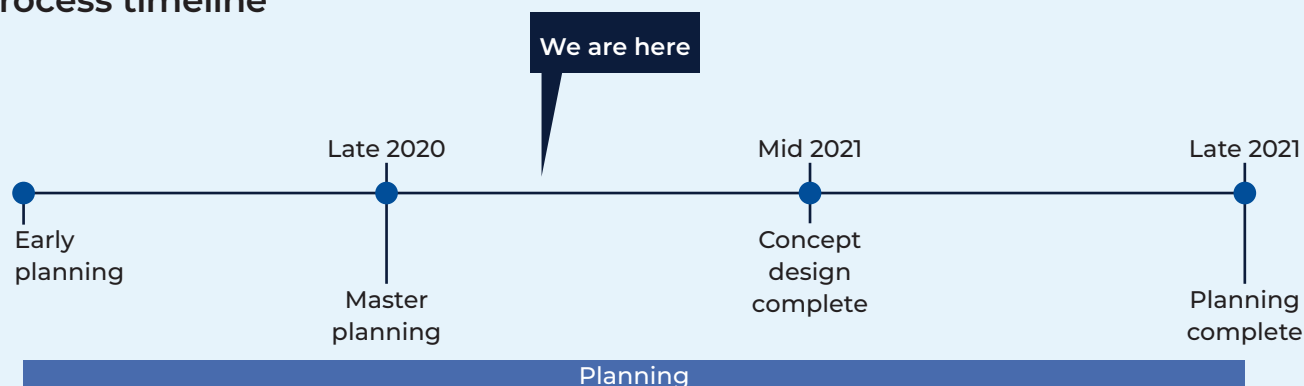


Gledswood Hills Public School – Stage 2

Planning update

December 2020

Process timeline



Investing in our schools

The NSW Government is investing \$7 billion over the next four years, continuing its program to deliver more than 200 new and upgraded schools to support communities across NSW. This is the largest investment in public education infrastructure in the history of NSW

The NSW Department of Education is committed to delivering new and upgraded schools for communities across NSW. The delivery of these important projects is essential to the future learning needs of our students and supports growth in the local economy.

Planning for an upgrade to Gledswood Hills Public School

To address population growth and enrolment demand in the south west Sydney growth area, we are currently undertaking planning for an upgrade to Gledswood Hills Public School. This upgrade project, also referred to as Stage 2 of the recently completed Gledswood Hills Public School will deliver 20 new innovative and flexible learning spaces.

Initial planning for Stage 2 was undertaken as part of the project to build the new school, which has core facilities to accommodate 1,000 students. The next phase involves reviewing and updating the master plan and developing a concept design.

Next steps

To finalise the concept design, we are working with the school to verify the location of the additional learning spaces.

We will share details of the concept design with the Gledswood Hills community once they are available. School Infrastructure NSW (SINSW) will seek a variation to the original planning approval in 2021.

Progress summary

The master plan has been completed and the next steps involve finalising the concept design.

How can I get involved?

We are committed to working together with our school communities and other stakeholders to deliver the best possible learning facilities for students.

Your feedback on this project is important to us. For more information, questions or to make a comment please email us at schoolinfrastructure@det.nsw.edu.au.

Changing the way we communicate

The health and safety of our students, staff and community is our priority.

We are temporarily changing some of the ways we keep you informed about our project in your community to account for social distancing measures.

How we will keep you informed

Until further notice we will share information with our communities online instead of in person.

Our information hotline and email address will continue to operate as normal.

Keep you informed

The SINSW website will continue to have up-to-date information about the project in your area. You can also continue to contact us via our community information

For more information contact:

School Infrastructure NSW
Email: schoolinfrastructure@det.nsw.edu.au
Phone: 1300 482 651
www.schoolinfrastructure.nsw.gov.au

Gledswood Hills Public School - Stage 2

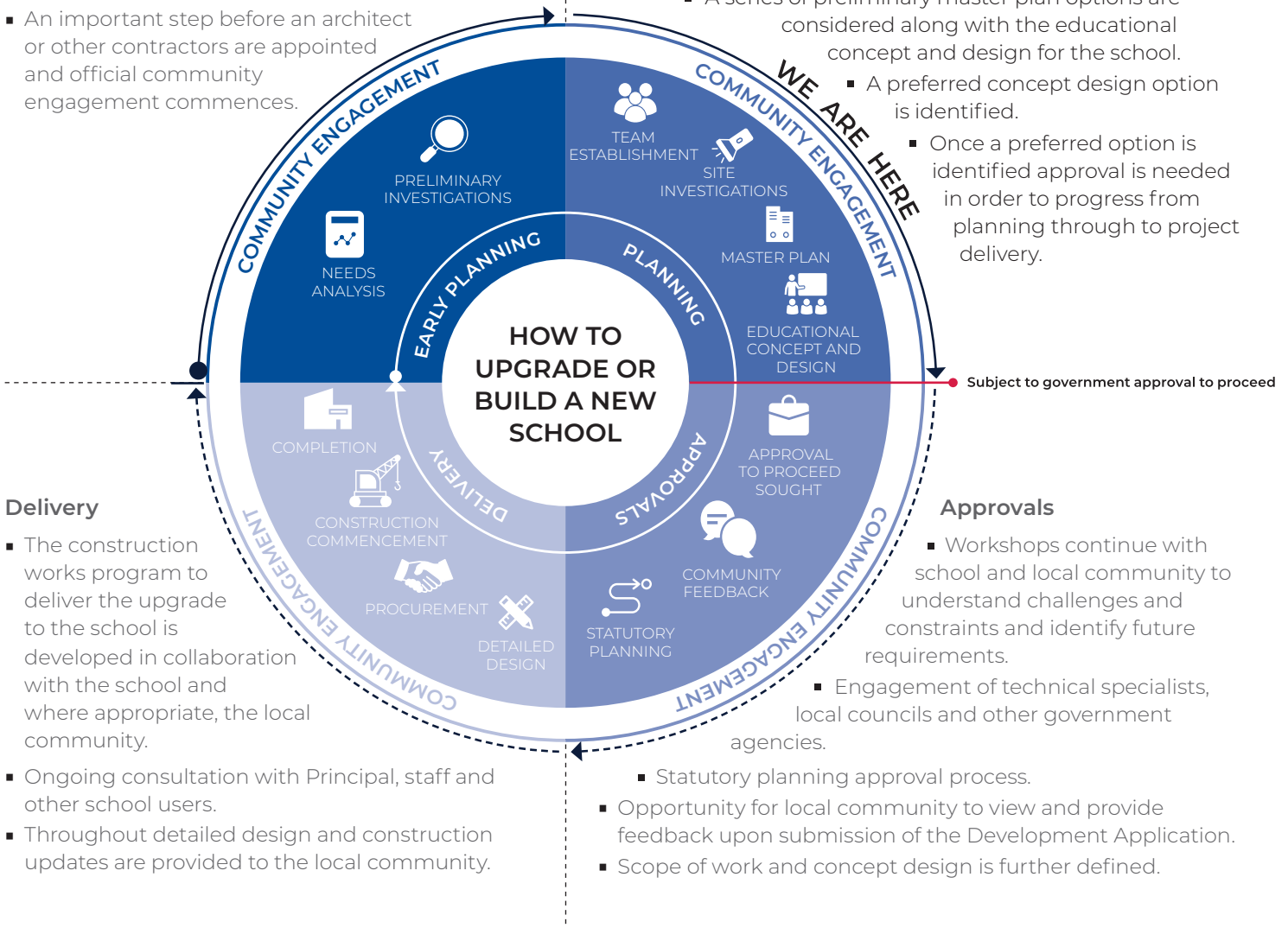
Planning funding has been allocated for Stage 2 of Gledswood Hills Public School. The information below takes you through the journey of upgrading or building a new school.

Early planning

- Consideration and studies of demographic trends, education requirements, the condition of the existing school buildings, catchment boundaries, heritage requirements, transport links and partnership opportunities.
- Doing so means that we:
 - consider the needs of the local area now and into the future.
 - ensure the right school is designed for the community.
- An important step before an architect or other contractors are appointed and official community engagement commences.

Planning

- Consultants such as architects and project managers are appointed.
- Investigation and review of site and development of master plan options.
- Master planning considers options for the general size, shape and form of buildings for a specific school site.
- A Project Reference Group (PRG) is established.
- Operational, educational and service delivery factors are understood and considered by the PRG.
 - A series of preliminary master plan options are considered along with the educational concept and design for the school.
 - A preferred concept design option is identified.
 - Once a preferred option is identified approval is needed in order to progress from planning through to project delivery.



Delivery

- The construction works program to deliver the upgrade to the school is developed in collaboration with the school and where appropriate, the local community.
- Ongoing consultation with Principal, staff and other school users.
- Throughout detailed design and construction updates are provided to the local community.