

# Gledswood Hills Public School

## Welcome



Gledswood Hills Public School

## Welcome to your school

We're excited your new school facilities are ready for you to use.  
Your new school includes:



24 flexible learning spaces  
catering for up to 600 students



A hall



A library



Special  
program rooms



Before and after  
school facilities

Thank you for your patience during construction. We are thrilled to deliver this project for your school community and hope you enjoy your new spaces. Share your back to school experience with **#Ready2020**.



Map of Gledswood Hills Public School

## Message from your Principal

It is with immense pride that I welcome you to the opening of our brand new school. Our school motto is 'Together We Can'. This motto represents our core belief that we have the capability to prepare our children for their future academic, social and emotional needs, as long as all stakeholders come on the journey.

The teaching staff are excited to be part of the Gledswood Hills Public School family and are passionate and committed to ensuring we deliver high quality education to cater for the needs of each and every learner. Together, we will prepare our students for the future and ensure they develop the essential skills required to connect, communicate and succeed. The students entering Gledswood Hills Public School are entering not only an incredible new learning space, they are also joining a family who will ensure every student is known, valued and cared for.

We look forward to the journey ahead and meeting you over the coming months.

**Lisa Whitfield, Principal**

## Where to meet

Students, parents and teachers will make their way to the multi-purpose court. Teachers will greet the students and lead them into our new learning spaces.



Innovative learning spaces

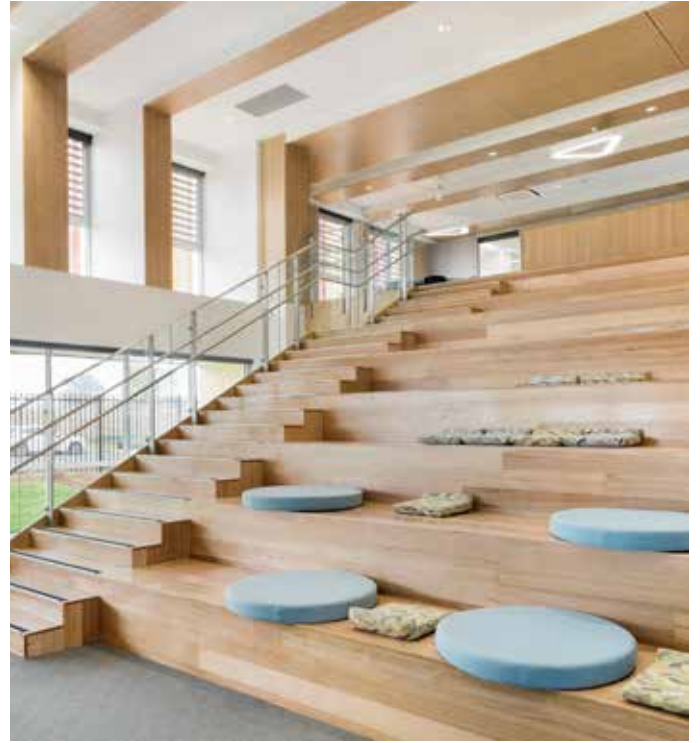
# Innovative learning environments

---

The new Gledswood Hills Public School has been completed. This exciting project now delivers innovative learning environments for the next generation of young minds.

Innovative learning environments provide flexibility where teachers can provide opportunities for student engagement. The learning spaces:

- are adaptable to accommodate small or large groups
- include learning neighbourhoods with flexible spaces that allow students to use technology in a variety of settings
- provide opportunities to enhance skills in collaboration, communication, critical thinking, problem solving and creativity.



Innovative learning spaces





Gledswood Hills Public School

## Frequently asked questions

### What has been delivered at your school?

We are excited to announce the new Gledswood Hills Public School is complete. The project has delivered 24 flexible learning spaces, catering for up to 600 primary school students, a library, hall, before and after school facilities and special program rooms.

### Which school gates will be open?

There are three entrances to our school. For Day 1 Term 1 2020 all entrances will be open (please see school map). Our accessible entrance is through the top gate, on Providence Drive.

### Will there be Out of School Hours Care (OSHC) available?

Yes, there will be Out of School Hours Care available. You can contact the provider on phone 0403 864 833 or email [gledswoodhills@kidsunited.com.au](mailto:gledswoodhills@kidsunited.com.au).

### What are the school start, finish and break times?

School starts at 8:50am and finishes at 2:50pm. Morning tea is at 10:50am and lunch is at 1:30pm.

### Where is the Kiss and Drop zone?

The Kiss and Drop zone will be operational from Week 3 Term 1. More information will be provided in coming weeks.

### Where is on street parking?

Parking is available along The Hermitage Way, Providence Drive and Paramoor Street. There is no on site parking available to parents.

### When can parents and the community tour the new building?

A parents and community tour was held before the start of the school year. To organise a viewing of the school, please contact our administration staff who can discuss the process with you.

## Contact us

For more information about this project contact School Infrastructure NSW:

**Website:** [schoolinfrastructure.nsw.gov.au](http://schoolinfrastructure.nsw.gov.au)

**Email:** [schoolinfrastructure@det.nsw.edu.au](mailto:schoolinfrastructure@det.nsw.edu.au)

**Phone:** 1300 482 651

For information about school activities and operations, contact the school directly:

**Principal:** Lisa Whitfield

**Email:** [gledswoodhills-p@det.nsw.edu.au](mailto:gledswoodhills-p@det.nsw.edu.au)

**Phone:** 02 8784 7200