



Gledswood Hills Public School opened January 2020

# Gledswood Hills Public School

Information pack | August 2023

Stage 1 of the new school at Gledswood Hills Public School was completed in January 2020 with capacity for 1,000 students. It delivered a new administration centre with public reception, hall, library/resource centre, canteen, OOSH facilities, and 24 classrooms.

Stage 2 is now underway and will deliver an additional 20 classrooms and additional car parking spaces. It is due to be complete mid 2024.

When complete the school will include:



**44**  
classrooms



Administration  
and staff  
facilities



Library/  
resource centre



Hall with associated  
change rooms and stores



Outside School Hours Care  
(OSHC) facilities



A canteen



Covered outdoor  
learning area (COLA)



**75** car parking  
spaces

# Project update

Work on Stage 2 is progressing well and is expected to be operational from the beginning of term 2 of 2024.

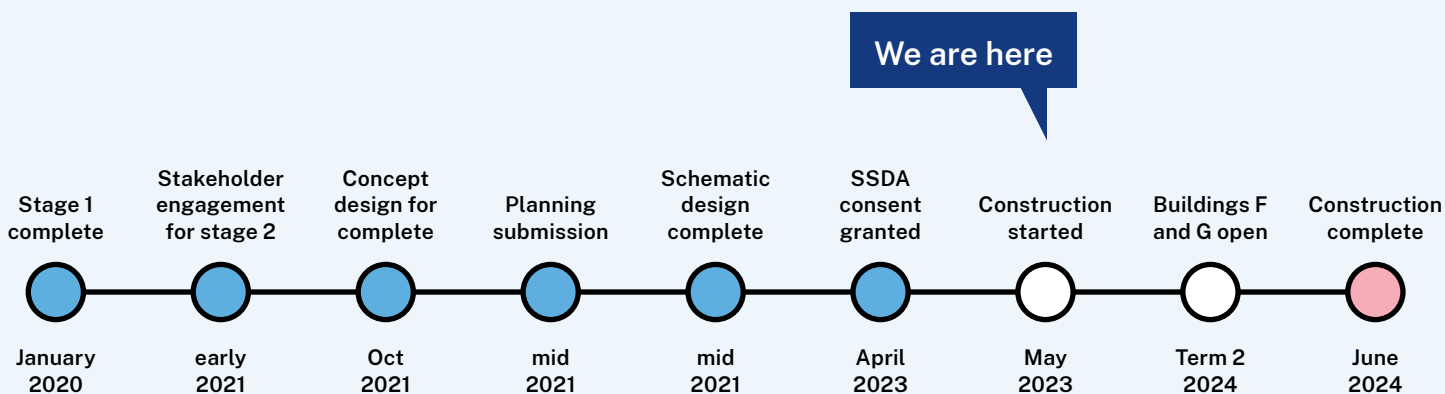
## Progress

- Ground floor slabs have been poured for Building F and Building G.
- A platform DDA compliant lift has been installed for Building E to ensure the building remains accessible for wheelchair users and people with mobility restrictions.
- A new path and gate have been installed which comply with accessibility requirements.
- Formwork for the suspended deck on Level 1 of Building F is complete.

## Next steps

- Scaffolding to levels 2 and 3 will shortly be erected, prior to work commencing on the roof.
- Undertake an engineering inspection for Building F Level 1 suspended deck.
- Complete termite protection.

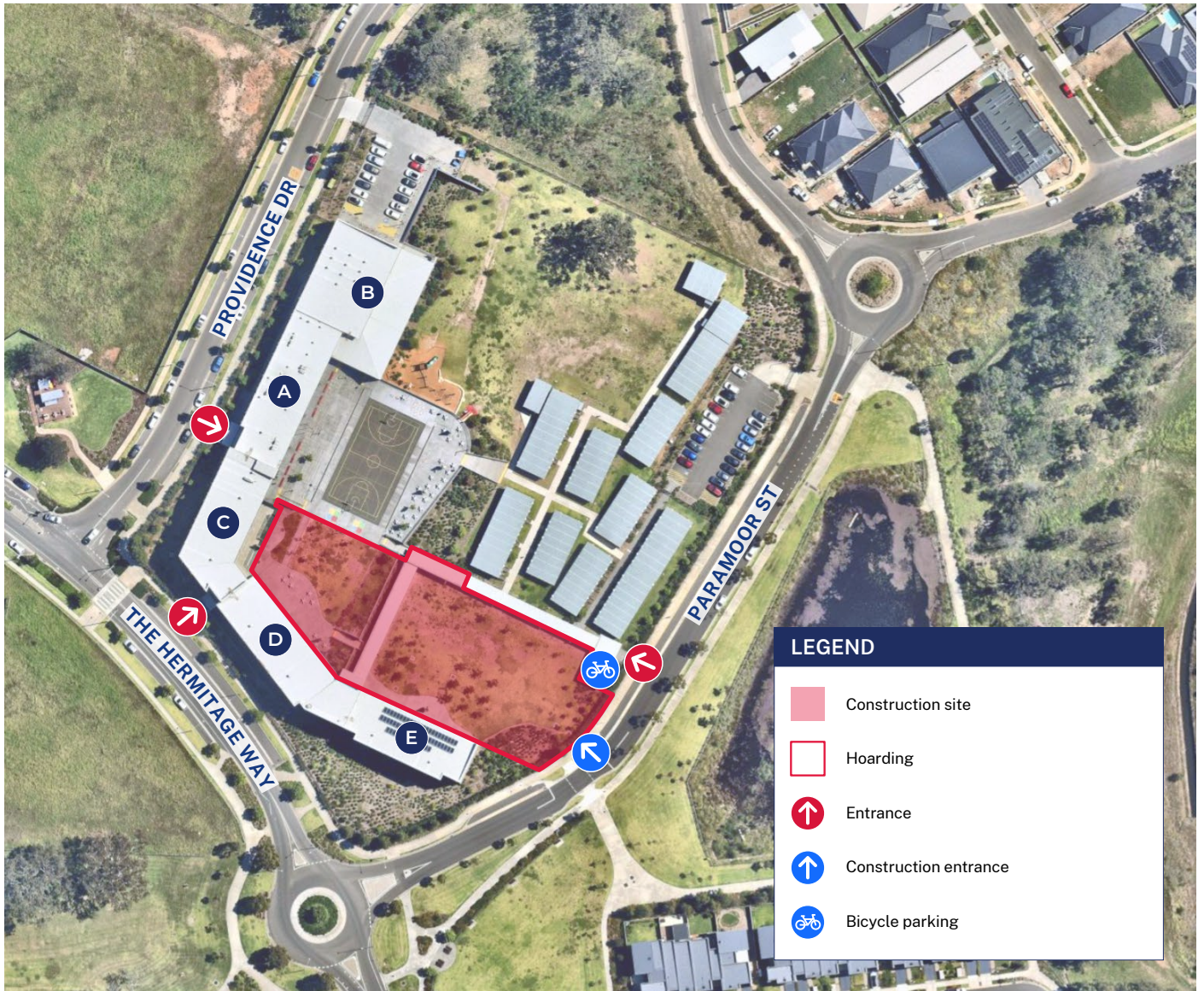
# Timeline



An artist impression of Stage 2 of the new Gledswood Hills Public School



# Stage 2 work location



## Frequently asked questions

---

### What are the scheduled working hours?

Work will take place from 7 am to 6 pm from Monday to Friday and from 8 am to 1 pm on Saturday.

### What safety measures will be in place?

The safety of the school's students, staff and the local community is our highest priority. Construction planning has been designed so there is minimal impact on school operations. Traffic control personnel are on site to assist with contractor deliveries. Buffer zones will be in place for large machinery and where possible, works in close proximity to the temporary school will be scheduled outside of school operation hours.

### What steps will be taken to control noise and dust impacts?

All work onsite will be conducted in accordance with NSW Government noise, safety, environmental, and building regulations. We are working closely with the school Principal to minimise impacts to staff, teachers, students, and neighbours.

### How will traffic be managed?

Construction vehicle movements and deliveries will be scheduled outside of peak school operation times. Traffic management will be in place where required to manage vehicles entering and exiting the site in a safe manner. Site deliveries will be scheduled outside of school drop off and pick up times (where possible) and traffic control personnel will be on site to assist with deliveries and traffic movement.

### How will you minimise disruption to normal school operations during construction?

School Infrastructure NSW is working closely with the principal and staff to ensure that school operations continue with minimal disruption.

### How will you keep us informed?

School Infrastructure NSW (SINSW) is committed to keeping the school and local community informed about the project. We do this in a range of ways including information sessions, project updates, works notifications, the school newsletter, and the project page on the SINSW website. If you have any further queries, please do not hesitate to contact SINSW using the contact details below.

### Who can I contact if I have a concern?

If you have any queries, concerns or feedback about this project you can contact School Infrastructure NSW during business hours on 1300 482 651 or email us at [schoolinfrastructure@det.nsw.edu.au](mailto:schoolinfrastructure@det.nsw.edu.au). In an emergency, call triple zero (000).

### How will you manage construction impacts?

For detailed information about how SINSW manages construction impacts please visit our webpage at [edu.nsw.link/ConstructionImpacts](https://edu.nsw.link/ConstructionImpacts) or scan this QR code.



### Learn more about this project

To learn more about this project, please visit the project webpage at [edu.nsw.link/GledswoodHillsStage2](https://edu.nsw.link/GledswoodHillsStage2)