



Gillieston Public School redevelopment

Planning update

July 2022

Investing in our schools

The NSW Government is investing \$8.6 billion in school infrastructure over the next four years, continuing its program to deliver 160 new and upgraded schools to support communities across NSW. This builds on the more than \$9.1 billion invested in projects delivered since 2017, a program of \$17.7 billion in public education infrastructure.

The NSW Department of Education is committed to delivering new and upgraded schools for communities across NSW. The delivery of these important projects is essential to the future learning needs of our students and supports growth in the local economy.

Gillieston Public School redevelopment

The NSW Government is increasing its investment in public education infrastructure, with funding for 23 new and upgraded school projects announced as part of the NSW 2022/23 Budget. This includes funding for the redevelopment of Gillieston Public School to replace demountables on the existing site and provide fit-for-purpose learning spaces.

The planning phase will include engagement of consultants such as architects and project managers and various site investigations to inform development of the master plan options. Doing so means that we consider the needs of the local area now and into the future, and ensure the right school is designed for the community. Once a preferred option is identified, government approval of a business case is needed to enable delivery of the project.

Upcoming works

Separate to the capital works project, the Asset Management Unit will also be delivering a number of short to medium projects at Gillieston Public School. These will include:

- installing a demountable hub to provide out of school hours care (OSHC) facilities
- accessibility improvements including covered walkways
- upgrading the school fencing
- connecting the school to the town sewer.

Site investigations and planning for these works are underway and further information will be provided to the community soon.

For more information contact:

School Infrastructure NSW
Email: schoolinfrastructure@det.nsw.edu.au
Phone: 1300 482 651
www.schoolinfrastructure.nsw.gov.au

How can I get involved?

We are committed to working together with our school communities and stakeholders to deliver the best learning facilities for students.

A dedicated project page has been published on the School Infrastructure NSW website and as the project progresses we will share details with the community for feedback. You can also contact us via our community information line and email on the details below.

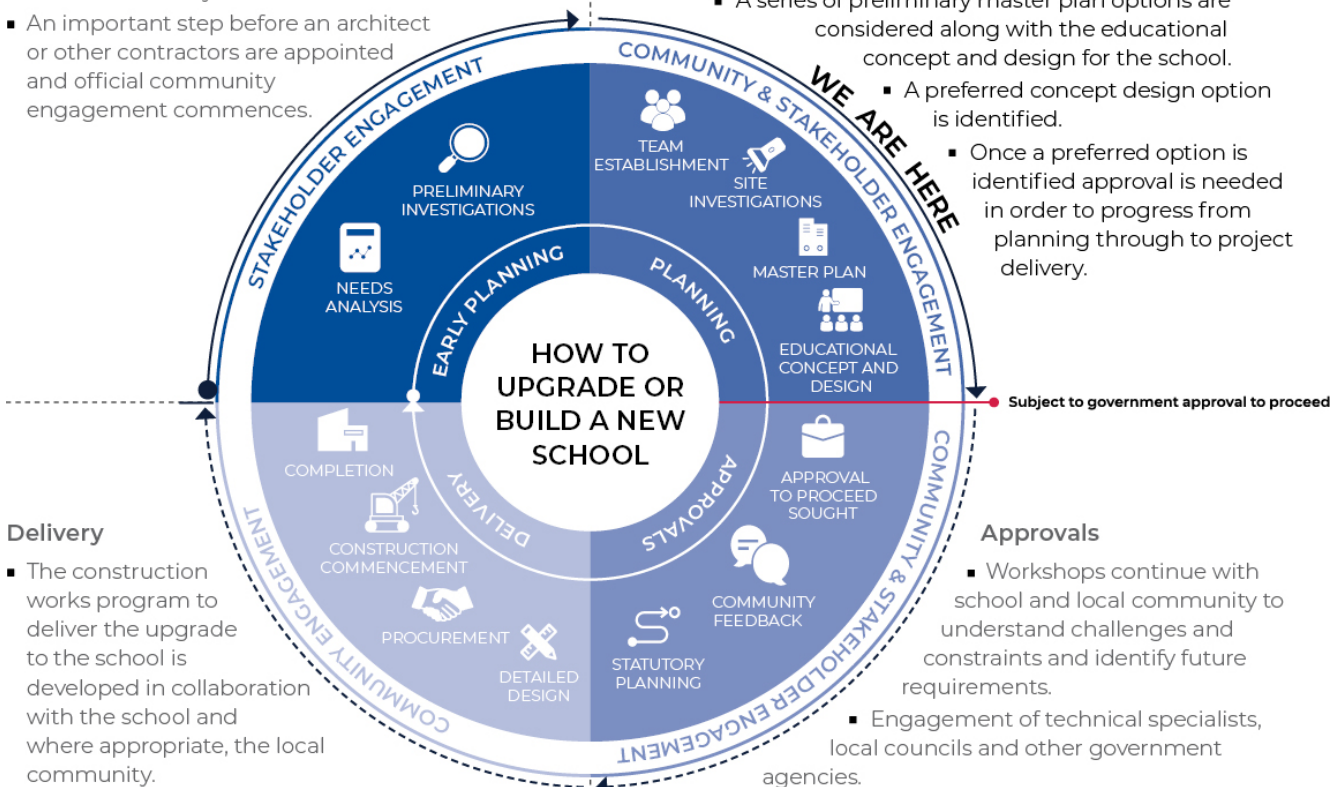
The information below takes you through the journey of upgrading or building a new school

Early planning

- Consideration and studies of demographic trends, education requirements, the condition of the existing school buildings, catchment boundaries, heritage requirements, transport links and partnership opportunities.
- Doing so means that we:
 - consider the needs of the local area now and into the future.
 - ensure the right school is designed for the community.
- An important step before an architect or other contractors are appointed and official community engagement commences.

Planning

- Consultants such as architects and project managers are appointed.
- Investigation and review of site and development of master plan options.
- Master planning considers options for the general size, shape and form of buildings for a specific school site.
- A Project Reference Group (PRG) is established.
- Operational, educational and service delivery factors are understood and considered by the PRG.
 - A series of preliminary master plan options are considered along with the educational concept and design for the school.
 - A preferred concept design option is identified.
- Once a preferred option is identified approval is needed in order to progress from planning through to project delivery.



Delivery

- The construction works program to deliver the upgrade to the school is developed in collaboration with the school and where appropriate, the local community.
- Ongoing consultation with Principal, staff and other school users.
- Throughout detailed design and construction updates are provided to the local community.

Approvals

- Workshops continue with school and local community to understand challenges and constraints and identify future requirements.
 - Engagement of technical specialists, local councils and other government agencies.
- Statutory planning approval process.
- Opportunity for local community to view and provide feedback upon submission of the Development Application.
- Scope of work and concept design is further defined.

For more information contact:

School Infrastructure NSW
 Email: schoolinfrastructure@det.nsw.edu.au
 Phone: 1300 482 651
www.schoolinfrastructure.nsw.gov.au

