



Entry to Galungara Public School

Galungara Public School Stage 2

Project update | December 2022

Investing in our schools

The NSW Government is investing \$8.6 billion in school infrastructure over the next four years, continuing its program to deliver 160 new and upgraded schools to support communities across NSW. This builds on the more than \$9.1 billion invested in projects delivered since 2017, a program of \$17.7 billion in public education infrastructure.

The NSW Department of Education is committed to delivering new and upgraded schools for communities across NSW. The delivery of these important projects is essential to the future learning needs of our students and supports growth in the local economy.

Project overview

Construction on Stage 2 of the Galungara Public School began in March 2022. The school was planned and designed to be constructed in stages. Stage 2 is now progressing and will provide additional capacity to meet the need of the growing local community. Stage 2 includes:

- 20 new learning spaces
- an additional covered outdoor learning area
- landscaping works.

Progress update

Final internal works continue for Block B3 (8 learning spaces) and Block B4 (12 learning spaces) for these to be complete for Day 1 Term 1 2023. External landscaping works are progressing to schedule. COLA construction and the covered walkway are now completed. See below site map which provides a visual outline of the Galungara Public School Stage 2 works.

A revised School Travel Plan has also been prepared incorporating a relocated pedestrian crossing on Farmland Drive, a proposed pedestrian crossing and refuge on Jerralong Drive, together with additional traffic signage on Farmland Drive, to manage the increased enrolments for Day 1 Term 1 2023.

Updated Travel Access Guide

An updated Travel Access Guide for Day 1 Term 1 2023 will be available. The Travel Access Guide includes a range of useful information for parents, families and students, including active ways to get to school, safety tips, walking and cycle access, and bus routes and services.

A Travel Access Guide is available which provides suggested safe and accessible options for travelling to school. The Travel Access Guide will be available at edu.nsw.link/GalungaraPS.

Galungara Public School supports sustainably and environmentally friendly transport practices. The school community is encouraged to walk or ride a bicycle to school either independently or with parental supervision.

We acknowledge the street environment around the school is still being developed and not all streets and footpaths have been built.

Using the Kiss and Drop area

For parents who intend to drive their child/ren to school, the Kiss and Drop area is marked out in the shared car park for the school off Farmland Drive.

This space is a ‘No Parking’ zone, meaning that you may stop for up to a maximum of 2 minutes and must remain within 3 metres of your vehicle.

School holiday work times

Construction will continue until 24 December and recommence on 4 January 2023.



** indicative only*

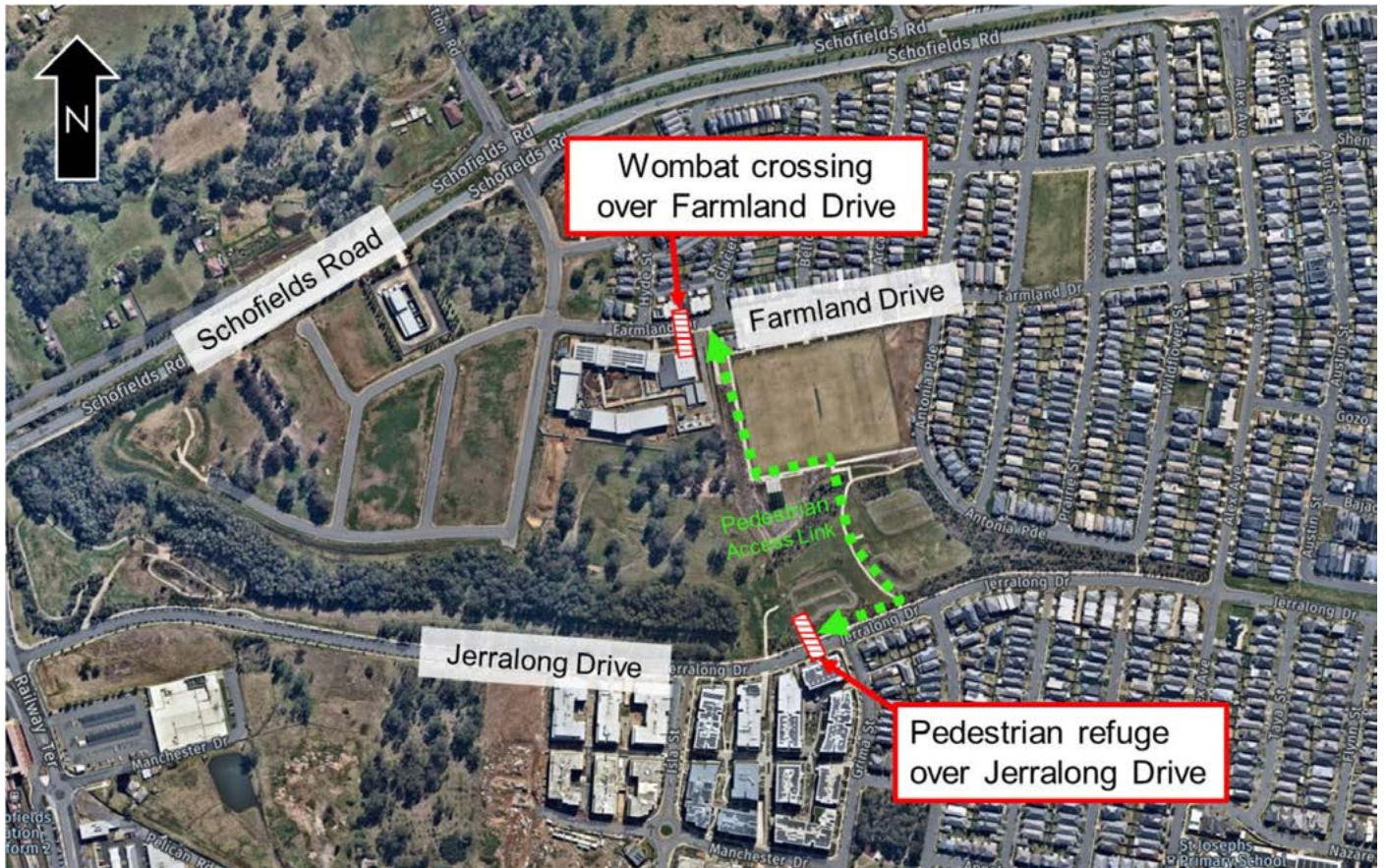


Figure 1: Planned upgrades to pedestrian access to Galungara Public School for Day 1 Term 1 2023.

If you have any queries or concerns about this project you can contact School Infrastructure NSW during business hours on 1300 482 651. School Infrastructure NSW will be closed from 5 pm Friday 23 December 2022 to 9 am Monday 9 January 2023, inclusive, in line with the NSW Government shut down period. During this time, if there is an urgent issue please contact the site manager listed on the construction site entry. In an emergency, please call triple zero (000).

