

# Galungara Public School

## Works notification | 12 January 2023

### Temporary pedestrian crossing works

Stage 2 of Galungara Public School is underway with completion on track for early 2023. Stage 2 includes additional learning spaces to support the growing population in the North West Growth Area.

Stage 1 of the upgrade to Galungara Public School was completed in early 2021.

### Traffic upgrade work

Traffic upgrades will take place near the school including a temporary pedestrian crossing on Farmland Drive, a temporary pedestrian refuge on Jerralong Drive, and additional traffic signage on Farmland Drive. These upgrades will assist managing increased road activity in 2023.

Preparation work is underway, with construction works starting from Wednesday, 18 January 2023 and is expected to be completed by 25 January 2023, weather permitting.

Traffic controllers will be in place on Farmland Drive, and Jerralong Drive. Traffic control will be in place for Term 1 and Term 2 2023 to support the community's awareness of these changed road conditions.

For the safety of students, the local community and workers, road users are advised to obey directions and allow extra time for travel.

See map overleaf for the location of the traffic upgrade work.

### Working hours

These works will be conducted between 7 am to 5 pm. Standard project working hours are 7 am to 5 pm, Monday to Friday and 8 am to 1 pm Saturday. No work will take place on Sundays or public holidays.

Thank you for your patience while we deliver this important school infrastructure.



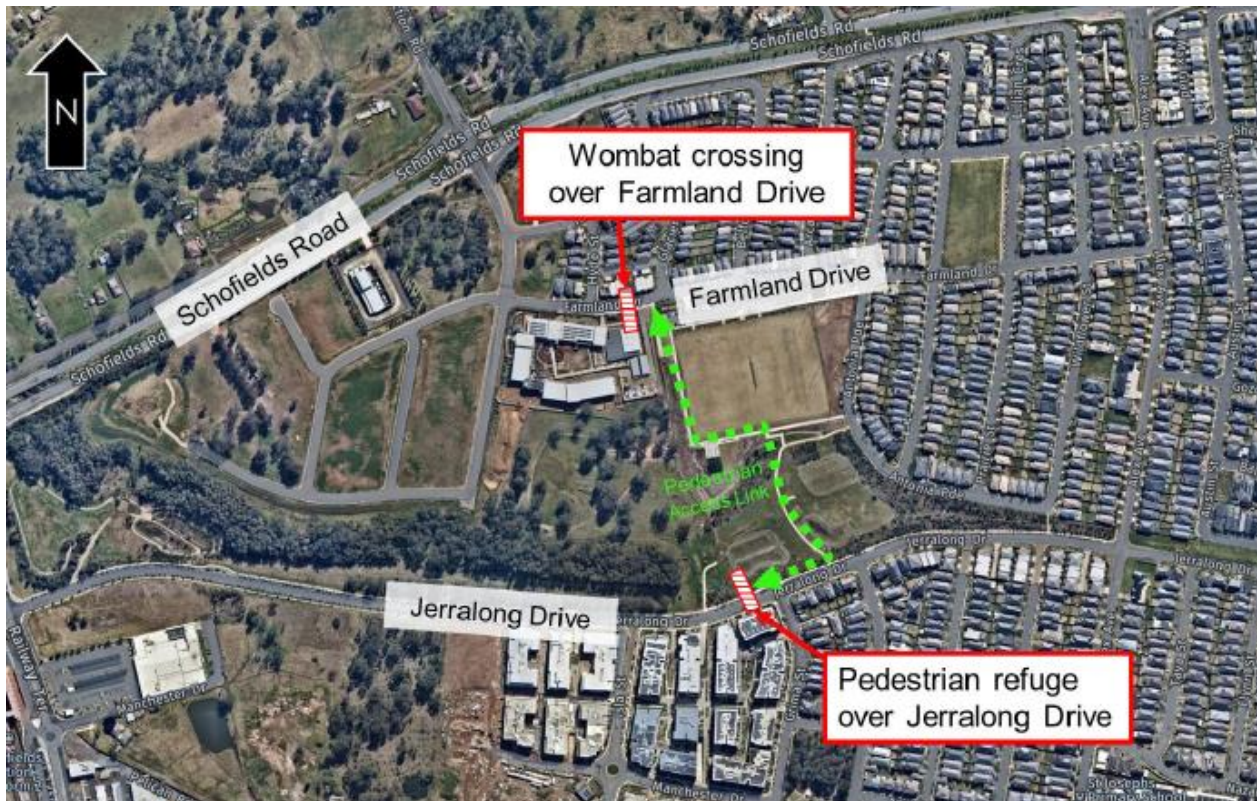


Figure 1: Planned upgrades to pedestrian access to Galungara Public School prior to Day 1 Term 1 2023.

