



Galungara Public School entry

# Galungara Public School

## Project update

March 2022

### Investing in our schools

The NSW Government is investing \$7.9 billion over the next four years, continuing its program to deliver 215 new and upgraded schools to support communities across NSW. This is the largest investment in public education infrastructure in the history of NSW.

The NSW Department of Education is committed to delivering new and upgraded schools for communities across NSW. The delivery of these important projects is essential to the future learning needs of our students and supports growth in the local economy.

### Stage 2 for Galungara Public School

Construction on Stage 2 of the Galungara Public School has now commenced. Stage 2 will provide additional accommodation to meet the need of the growing local community. Stage 2 will include:

- 20 new learning spaces
- Two additional covered outdoor learning areas
- Two new multipurpose games courts
- Landscaping works.

To review the State Significant Development application and support documentation, visit the NSW Government Planning Portal at: [www.planningportal.nsw.gov.au/major-projects/project/10036](http://www.planningportal.nsw.gov.au/major-projects/project/10036).

### For more information contact:

School Infrastructure NSW  
Email: [schoolinfrastructure@det.nsw.edu.au](mailto:schoolinfrastructure@det.nsw.edu.au)  
Phone: 1300 482 651  
[www.schoolinfrastructure.nsw.gov.au](http://www.schoolinfrastructure.nsw.gov.au)

**Construction commencement**

The construction works will be undertaken by Richard Crookes Construction.

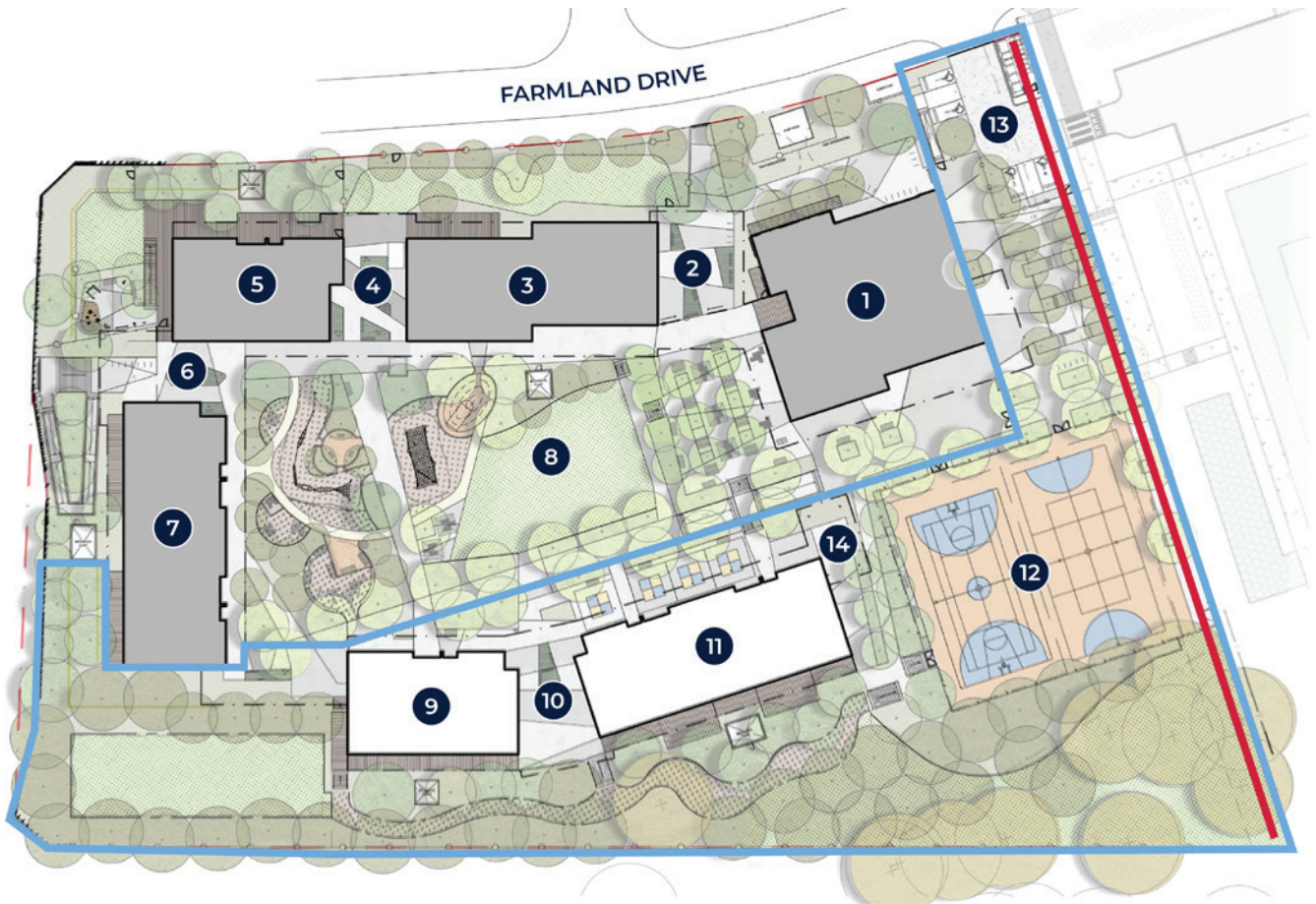
Works for Stage 2 of the Galungara Public School will take place between 7 am and 6 pm, Monday to Friday and 8 am to 1 pm on Saturdays.

Site signage is in place and hoarding put up to minimise noise and ensure the safety of the local community.

There will be no work zones in place for this project. Works will be conducted from the confines of the site during construction.

Traffic controllers will be positioned at the intersection of Farmland Drive and the vehicle entry to the Stage 2 school construction and Easement A to manage the pedestrian and vehicle movements during construction hours. Easement A will be used as a temporary right of access and easement for services.

School Infrastructure NSW is working closely with the principal and staff to ensure that school operations continue with minimal disruption. This includes, to prevent disruption to school operations and activities, site deliveries being scheduled with consideration for school drop off and pick up times, and traffic control personnel are on site to assist with contractor deliveries.



*\* indicative only*

LEGEND			
Stage 2 works	Library and Administration	Building B2	Building B4
Easement A	COLA	Playground	Multipurpose court
Hall and OHSC	Building B1	Building B3	Special needs drop-off
Entry COLA	COLA	COLA	COLA

**For more information contact:**

School Infrastructure NSW  
 Email: [schoolinfrastructure@det.nsw.edu.au](mailto:schoolinfrastructure@det.nsw.edu.au)  
 Phone: 1300 482 651  
[www.schoolinfrastructure.nsw.gov.au](http://www.schoolinfrastructure.nsw.gov.au)



## Access and egress of vehicles

Access to Stage 2 of the site will take place at one location. This will be from the Eastern end of Farmland Drive.

Traffic controllers will be positioned at the intersection of Farmland Drive and the vehicle entry to the Stage 2 school construction and Easement A to manage the pedestrian and vehicle movements during construction hours. Easement A will be used as a temporary right of access and easement for services.

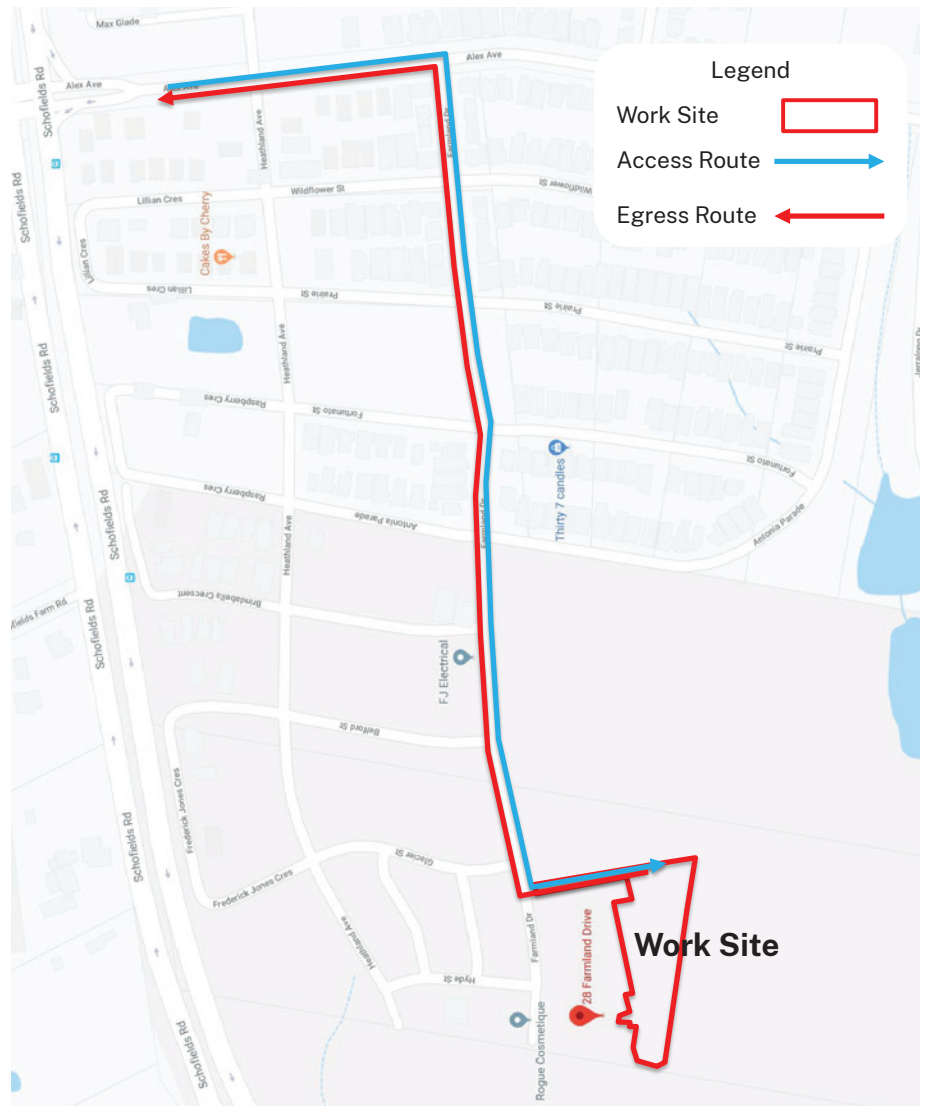
Vehicles will move in and out of the site in a forward direction. A speed limit of 5km/h will be maintained at all times whilst within the site area. Advanced warning and directional signage will be placed upon entry and exit of the construction site. The signage will guide drivers to the construction site. Vehicle movement will take into consideration the surrounding buildings and roads. Mitigation measures will be put in place and a traffic control plan has been developed to ameliorate conditions.

All exiting trucks will be loaded to their prescribed weight limits. All trucks will be covered by tarpaulin or like prior to exiting the site as required. All vehicles leaving the site must be free of mud or any other debris. At points of vehicle egress the driver will ensure vehicles give way to pedestrians and cyclists before exiting.

During times of Access and Egress, certified Transport for NSW accredited Traffic Controllers will be on site.

## Map of vehicle access and egress notification and distribution area.

Project updates and notifications will be provided to advise of peak times of vehicle movement. This includes for large concrete pours which are anticipated to have higher than usual vehicle activity and are expected during the early stages of construction (up to 30 June 2022).



## For more information contact:

School Infrastructure NSW  
Email: [schoolinfrastructure@det.nsw.edu.au](mailto:schoolinfrastructure@det.nsw.edu.au)  
Phone: 1300 482 651  
[www.schoolinfrastructure.nsw.gov.au](http://www.schoolinfrastructure.nsw.gov.au)

## Frequently asked questions

### What steps will be taken to control noise and dust impacts?

The contractor will continue to implement dust and noise control measures. Dust and noise are minimised with hoarding, shade cloth and spraying water.

### What considerations are there for pedestrians and cyclists?

All works will take into consideration pedestrians and cyclists. Advanced warning signage will be in place to warn pedestrians of the entry and exiting of vehicles to and from the site.

Only authorised personnel will be permitted within the building site unless accompanied by site management (1.8m chain wire fencing will surround the perimeter), if not inducted to the site. Whilst within the confines of the building site, all personnel will attire in correct PPE to ensure that they are visible to moving traffic.

No change to the footpaths or bike paths will be made, pedestrians and cyclists will follow the pathways as normal. Certified traffic controllers will be on site during times of vehicular movements and heavy loading.

### What is the use of the Council carpark?

The school uses the Council's shared use carpark in Farmland Drive as the pick-up/drop-off zone as well as for staff parking. Access from the carpark to the school is from the internal footpath of the joint use car park, and then across the street footpaths at the north-east corner of the project and directly into the main entry to the school along Farmland Drive.

### How will traffic be managed?

Traffic management will be in place where required for the safety of the local community and workers. Traffic controllers will be used to manage the entry and exit of vehicles to and from the construction site as necessary. Vehicles will give way to pedestrians at all times.

### Will street parking be impacted during construction?

Street parking impacts will be minimised where possible. Contractors are encouraged to carpool and parking will be made available on site for construction vehicles. We will work with local communities to identify issues and put in place measures to mitigate the effects.

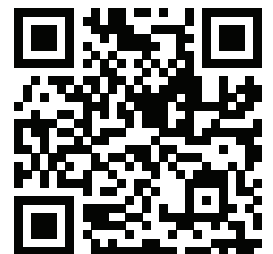
### What are some of the plans to minimise disruption to the local community?

During each stage of work the disruption to residents will be minimised by using routes which aim to reduce travel distance through residential areas as well as eliminating movements through shopping and significant public areas. Disruption to neighbours will be minimised by using pre-arranged arrival times for construction vehicles, ensuring no construction vehicles are illegally parked on Council/TfNSW roads and by conducting a letterbox drop to affected neighbours if any out of hours or disruptive works are required.

### Will utility services be interrupted as part of the construction?

School Infrastructure NSW coordinates upgrades or new supplies of utility services with local providers to minimise disruption. In the event of a disruption to services in the local area, we will notify businesses and residents in advance.

We look forward to bringing you more information in the near future which will include additional details about the Stage 2 works. To view an Information Pack about the project please visit the project webpage at: [edu.nsw.link/bJJzi](https://edu.nsw.link/bJJzi) or by scanning the QR code.



---

#### For more information contact:

School Infrastructure NSW  
Email: [schoolinfrastructure@det.nsw.edu.au](mailto:schoolinfrastructure@det.nsw.edu.au)  
Phone: 1300 482 651  
[www.schoolinfrastructure.nsw.gov.au](http://www.schoolinfrastructure.nsw.gov.au)