

# Green Square Public School

Including information about community spaces

September 2021



Image courtesy of BVN Real



Artist impression of the new primary school and community spaces

The NSW Government is investing \$7.9 billion over the next four years, continuing its program to deliver 215 new and upgraded schools to support communities across NSW. This is the largest investment in public education infrastructure in the history of NSW.

The NSW Department of Education is committed to delivering new and upgraded schools for communities across NSW. The delivery of these important projects is essential to the future learning needs of our students and supports growth in the local economy.



Flexible learning spaces /  
homebase classrooms



Multipurpose spaces



Out of school hours  
care (OSHC)



A canteen



A library



Games court



Covered outdoor  
learning areas (COLA)



Open space

# Project overview

The new primary school and community spaces in Green Square will be delivered by the Department of Education in collaboration with the City of Sydney. It will provide fit-for-purpose flexible learning spaces and core facilities to meet enrolment demands in the area.

The school will be located in Green Square on the former Royal South Sydney Hospital site on Joynton Avenue. The project will include dedicated multipurpose spaces for community use and shared spaces designed for both school and community use, including a communal hall, a multipurpose space, a games court and adjacent courtyard. Out of school hours care (OSHC) will also be provided on site.

## Progress Summary

We are pleased to announce a new primary school and community spaces to be built in Green Square. This project is jointly funded by the NSW Government and City of Sydney.

A design excellence competition was held in late 2019, where architects were invited to submit designs for a new integrated school and community facility at Green Square. Sydney architects BVN have designed the winning scheme.

## Next Steps

- Virtual information room will be open for the community from 9 am Thursday 23 to 5 pm Monday 27 September 2021.
- Submit a State Significant Development (SSD) application to the City of Sydney for assessment, as delegated by Department of Planning, Industry and Environment (DPIE).
- The application will be placed on public exhibition and submissions must be made directly to the City of Sydney.
- Determination of the SSD application.
- Start site establishment and early works on the Joynton Ave site, anticipated in late 2021. This work has been approved by a separate development application.

## Timeline



\_\_\_\_\_

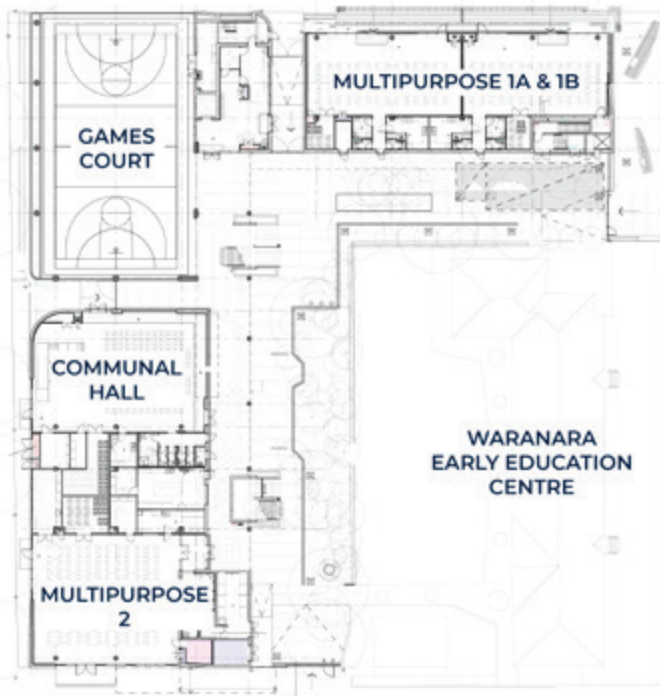


*Subject to change*

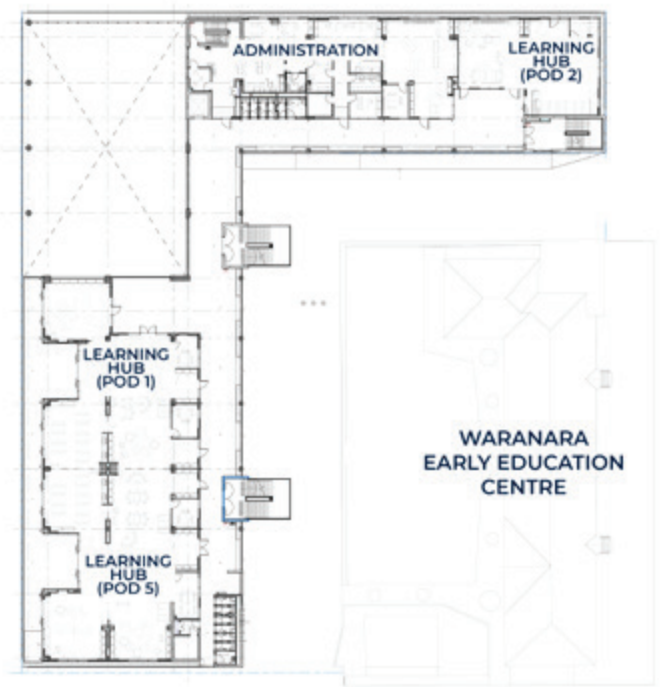


# Schematic design

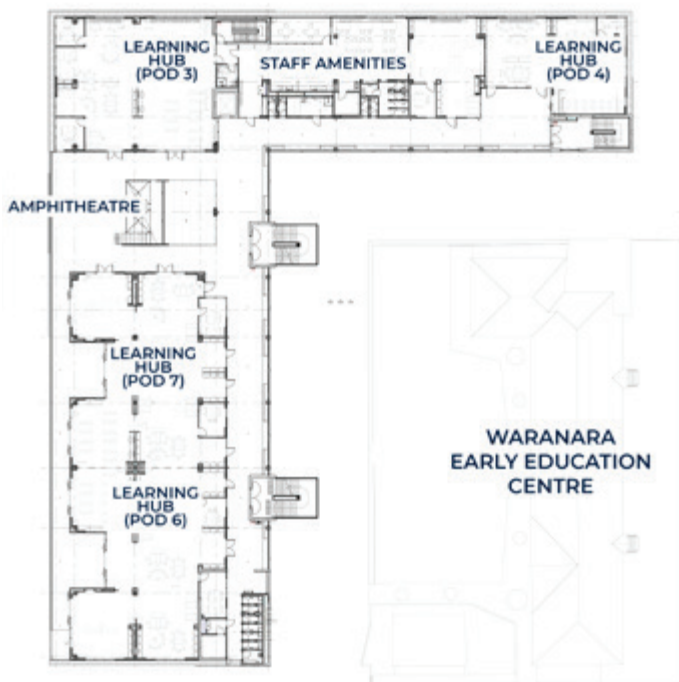
Ground level



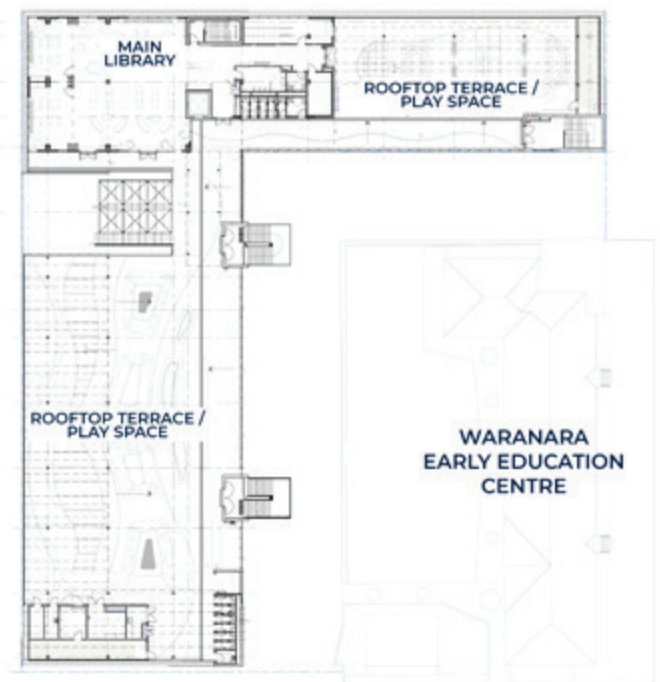
Level 1



Level 2



Level 3



# Design principles

---

School Infrastructure NSW and the City of Sydney invited architects to participate in an Architectural Design Excellence Competition at the former Royal South Sydney Hospital site at Green Square, Zetland to provide a new high-quality, multi-level public primary school, new community facilities as well as shared facilities.

The City has a history of providing high quality community facilities, including a number of community facilities in the immediate vicinity of the Competition Site, such as a world class library, an aquatic and recreation centre, an Early Education Centre, Community Shed and the Joynton Avenue Creative Centre. Across New South Wales (NSW), the Department of Education is funding new public schools, upgrades to existing public schools and improved facilities as public school enrolments continue to grow.

The purpose of the competition was to deliver the highest quality architectural, urban and landscape design. The competition sought high quality, functional design that responded to the site's context in Green Square Town Centre with a welcoming street presence that reinforces the site's civic nature in Green Square Community and Cultural Precinct, respects the surrounding heritage context, considers the significant inter-relationship between the school and the community facilities and fits within the given budget.

All components of the project are considered equally important in achieving the overall design intent to create a high-quality, integrated school and community spaces that enhances the activation and liveability of Green Square.

The overall design objective is to provide a cohesive design response, integrating all components of the school and community spaces, which is essential to achieving design excellence. The overarching design objectives are as follows:

- To create the highest quality architectural, urban design and landscape design solution that is capable of achieving design excellence.
- Contribute to the civic qualities of the new Green Square Town Centre in terms of its design and the continuing civic role of Green Square Community and Cultural Precinct.
- Respect the site's physical surroundings, distinctive heritage character and the park so that the new development complements the local area in terms of appearance and amenity.
- Ensure building form is not monotonous, over-powering, impersonal, or institutional.
- Ensure the landscape spaces are designed to be thoroughly integrated with the building design, and to support the educational and recreational needs of students and staff.
- Ensure the design creates a culture of welcome, inclusion and belonging that reflects and respect diversity within the community, with a clear sense of arrival for all users and wayfinding on site.
- Optimise comfort and enjoyment within buildings and spaces through acoustic and thermal comfort, appropriate lighting, appropriately apportioned spaces and connection to surroundings.
- Create a sustainable building and landscape, both in design and operation.
- Create spaces that are inclusive and universally accessible.
- Promote the safety and security of all students, staff, visitors and members of the community.
- Embed potential for reconfigurability, multi-purpose use over time.
- Actively promote safe and easy access by all modes of transport.
- Maximise site permeability.





Artist impression of multipurpose court



View from north west



View from north east

# Frequently asked questions

---

## **What is being delivered as part of this project?**

The project will deliver a range of school facilities, including flexible teaching homebase classrooms, canteen, covered outdoor learning area (COLA) and library, dedicated multipurpose community spaces and additional facilities designed for both school and community use, including a communal hall, multipurpose space, out of school hours care (OSHC), a games court and adjacent courtyard.

## **Where will the school be located?**

The new primary school and community spaces will be located in Green Square on the former Royal South Sydney Hospital site at Joynton Avenue, Zetland.

## **Why was there a design excellence competition?**

A design excellence competition was held due to the significance of the project and key location in the Green Square town centre. Design Competitions have also been held for the nearby Green Square Library and Plaza and Gunyama Park Aquatic and Recreation Centre. The competition was held in late 2019. Design competitions are a well-tested and highly successful procurement model; they help prioritise good design and can bring the highest quality of thinking and originality to a project. More information about Design Excellence competitions can be found through the NSW Government Architect.

## **Who is the design excellence competition winner?**

Sydney architects BVN have designed the winning scheme for the new integrated school and community spaces at Green Square. The winning BVN design will be refined before plans are submitted for planning approval and go on public exhibition.

## **What open space and recreation areas will be provided?**

The design will provide a dedicated school rooftop play area, games court space, courtyard and multipurpose space within the site.

## **What are the shared use arrangements?**

The building will incorporate joint use and dedicated community spaces on the ground floor. Aside from the dedicated community spaces fronting Zetland Avenue, the remainder of the ground floor will be used by the school during school hours and open to the public after hours and during weekends. Levels 1 to 3 will be dedicated school facilities only.

## **Who will operate the community spaces?**

The community spaces will be managed by the City of Sydney and will be hired out to community groups and users.

## **What stage of design is the project in?**

The schematic design shown in this Info Pack is in development. During master planning, we worked with key stakeholders to develop the education principles behind the project, and identify constraints and opportunities of the site which informed the building footprints. The project is currently in the schematic design phase and our consultant team are working through the overall layout and consideration of environmental, access, transport and other planning requirements.

## **What happens next?**

Submit a State Significant Development (SSD) application to the City of Sydney for assessment, as delegated by Department of Planning, Industry and Environment (DPIE).



## Frequently asked questions (cont.)

---

### What is the catchment area for the new primary school?

The school catchment will be confirmed closer to the school opening and will be based on the most up to date demographic data on the number of school aged children living in the local area at the time the school opens.

### How will students get to the new school?

The site is centrally located within the Green Square town centre, which has been designed as a network of people-friendly, low-speed streets that encourage walking and cycling in the area.

Separated cycleways are located on two streets that run alongside the site, connecting to the extensive bike network in the area. It is adjacent to main bus routes and will include a drop off and pick up zone. The site is well positioned 350m from Green Square train station.

Traffic and transport movements will be considered as part of the SSD application and can be found in the Transport and Accessibility Impact Assessment (TAIA), which will be a technical study in the Environmental Impact Statement.

### How can I find out more about the project?

School Infrastructure NSW (SINSW) will share information with the local community as the project progresses.

The SINSW website will continue to have up-to-date information about the high school project in your area [edu.nsw.link/xeqYJ7](https://edu.nsw.link/xeqYJ7).

You can also continue to contact us via our community information line 1300 482 651 and by email [schoolinfrastructure@det.nsw.edu.au](mailto:schoolinfrastructure@det.nsw.edu.au).

## Contact us

---



### Website

Stay up to date by visiting the School Infrastructure NSW website [schoolinfrastructure.nsw.gov.au](https://schoolinfrastructure.nsw.gov.au)



### Email

Contact the Community Engagement team by emailing [schoolinfrastructure@det.nsw.edu.au](mailto:schoolinfrastructure@det.nsw.edu.au)



### Phone

Contact us between 9:00am and 5:00pm, Monday to Friday on **1300 482 651**

