

Green Square Public School and Community Spaces

Project update – March 2024



Artist impression of new public school and community spaces

Investing in our schools

As part of the NSW Government's plan to rebuild public education, the 2024-25 Budget is delivering record education funding, including \$8.9 billion for new and upgraded schools. This targeted investment will ensure growing communities get access to a world class public education.

Project overview

The Green Square Public School and Community Spaces is being delivered by the NSW Government in partnership with the City of Sydney. It will provide new classrooms and core facilities to meet local enrolment demand as well as a range of spaces for community use.

The benefits

This project is jointly funded by the NSW Government and City of Sydney and will include:

- 24 new modern classrooms for 600 students
- a library and canteen
- staff rooms, administrative offices and amenities
- a covered outdoor learning area (COLA)
- 2 internal community multipurpose spaces and one internal shared multipurpose space
- outside of school hours (OOSH) care facilities
- a games court and adjacent courtyard (shared spaces)
- a communal hall (shared space)
- opportunity to promote and support local art.

JOINTLY FUNDED BY

CITY OF SYDNEY 

For more information

Phone: 1300 482 651

Email: schoolinfrastructure@det.nsw.edu.au

Website: schoolinfrastructure.nsw.gov.au

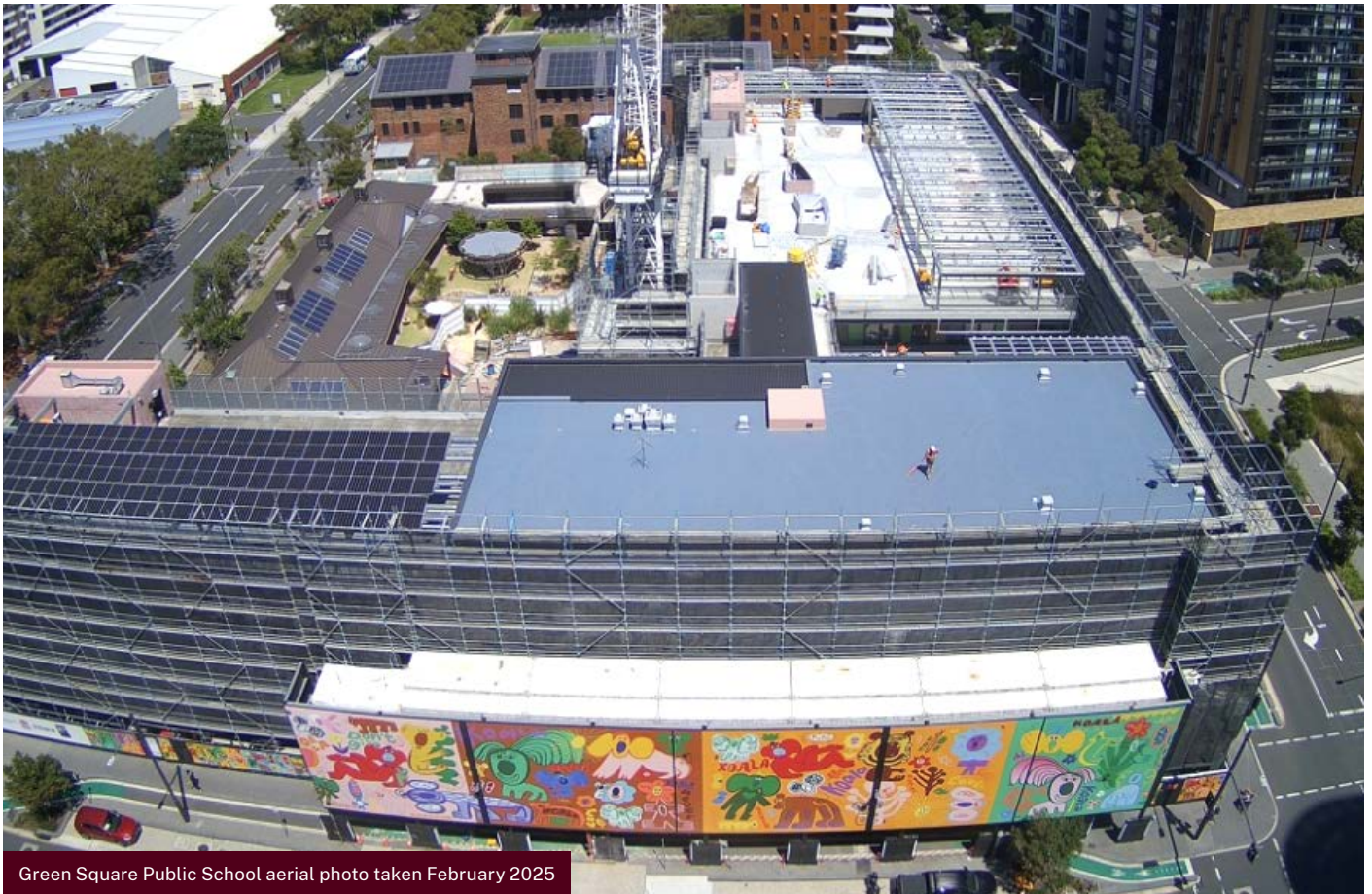


Progress update

Progress on the Green Square site is continuing well, with most floors reaching advanced fit-out stages.

Latest works

- wet areas tiling and sanitary fixtures (hand basins, showers etc.) have been installed
- glazing has been installed
- installation of steel mesh has been completed
- internal walls and ceilings are complete and are being painted on all floors
- ceiling tiles are being installed, and ceiling lighting/air conditioning/fire services are in progress
- joinery unit installation is in progress
- kitchen fit out is in progress
- balcony waterproofing/paving is in progress
- structural steel to roof level complete and northern side solar panels installed.



Green Square Public School aerial photo taken February 2025

JOINTLY FUNDED BY





Green Square Public School, Level 2

Next steps

- Continue advanced installation of fixtures, fittings and finishes in all internal areas.
- Continue with roof level southern side solar panel installation.
- Continue with facade works.
- Finalisation of roofing level works including landscaping and artwork.
- Public art works to ground level multipurpose court.
- External services/paving/landscape works.

Waranara Early Education Centre update

The City of Sydney has taken this opportunity to complete the Waranara playground and update some of the existing playground. The upgrade will provide more outdoor spaces and increase the play opportunities for children.

Stage 2 of the Waranara Early Education Centre construction will continue in early 2025. Works completed to date include demolition works and construction of a new ramp and awning adjacent to the childcare centre building.

Upcoming works include:

- hoarding relocation
- excavation works
- new inground services installation
- concrete works
- shade structures/timber decks and cubby house
- landscape and soft-fall works.



Green Square Public School staff on Day 1 Term 1 at Rainbow Street – ready for take-off!

Rainbow Street campus

It was fantastic to welcome new students, parents and teachers to the Rainbow Street campus on Day 1 Term 1 2025. Thank you for everyone who joined us, and we look forward to seeing you at our Green Square campus later this year.



How to enrol

Visit our website to access the enrolment form and submit your application online:
greensquare-p.schools.nsw.gov.au/about-our-school/enrolment.html

Contact us



You can find more information about the project at edu.nsw.link/GSPS or by scanning the QR code.

If you have any questions about this project, you can contact School Infrastructure during business hours:

Website: schoolinfrastructure.nsw.gov.au

Email: schoolinfrastructure@det.nsw.edu.au

Phone: 1300 482 651

JOINTLY FUNDED BY



schoolinfrastructure.nsw.gov.au

