

ISSUE	DATE	FOR
A	05/03/21	SSDA
B	04/08/21	SSDA REV 02
C	15/10/21	SSDA
D	24/02/22	SSDA

STRUCTURAL AND CIVIL ENGINEER

MEINHARDT BONACCI

+61 2 8247 8400

BUILDING SERVICES

STANTEC

+61 2 9493 9700

ESD & GREEN STAR

NDY

+61 2 9928 6800

LANDSCAPE ARCHITECT

TURF DESIGN

+61 2 8394 9990

BCA AND DDA

PHILLIP CHUN

+61 2 9412 23202

PROJECT MANAGER

COLLIERS INTERNATIONAL

+61 2 9257 0222

END USER

CITY OF SYDNEY

+61 2 9265 9333

END USER

NSW DEPARTMENT OF EDUCATION

1300 679 332

CLIENT

SCHOOL INFRASTRUCTURE NSW

PROJECT

GREEN SQUARE INTEGRATED

COMMUNITY FACILITY AND SCHOOL

ZETLAND AVENUE, GREEN SQUARE 2017

BVN PROJECT NUMBER

1908014.000

DRAWING KEY

ZETLAND AVENUE

PORTMAN STREET

JOYNTON AVENUE

TRUE NORTH

PROJECT NORTH

GRAPHIC SCALE

0 4000 10000

SCALE

1:200@A1

STATUS

SSDA

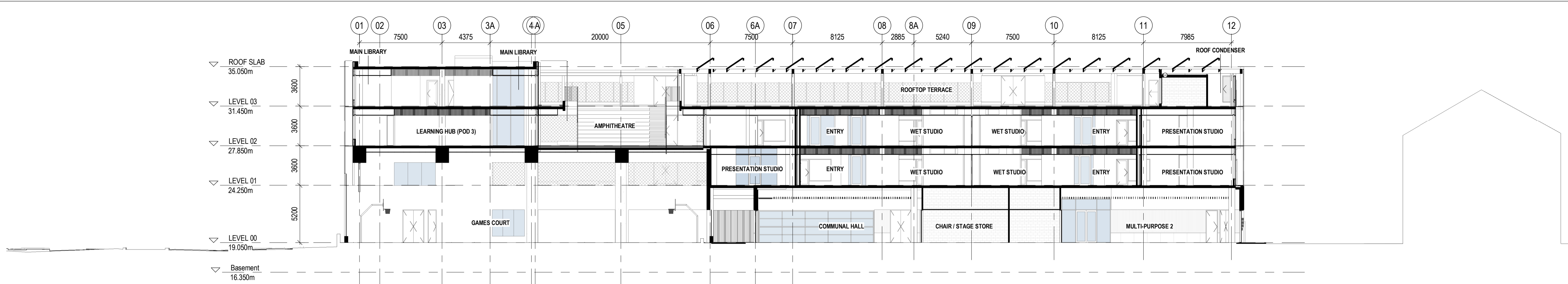
DRAWING

SECTIONS 01

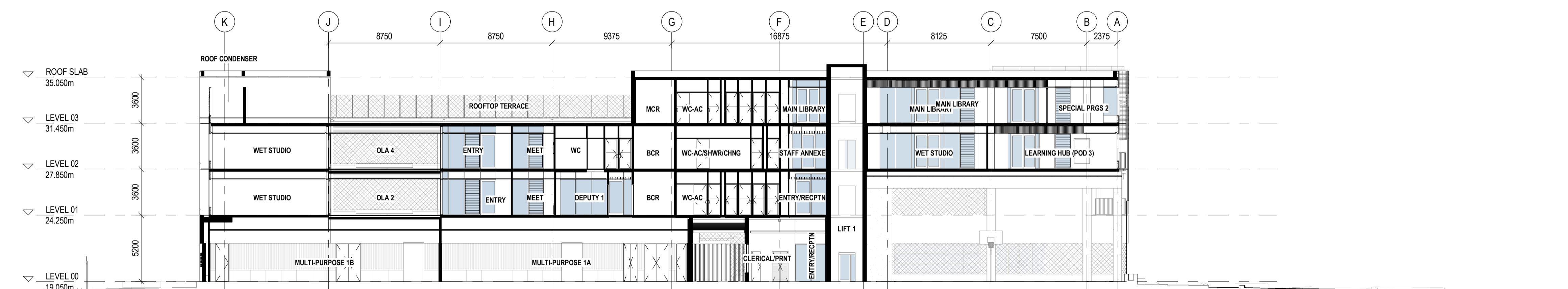
ISSUE

DA-D10-XX-01

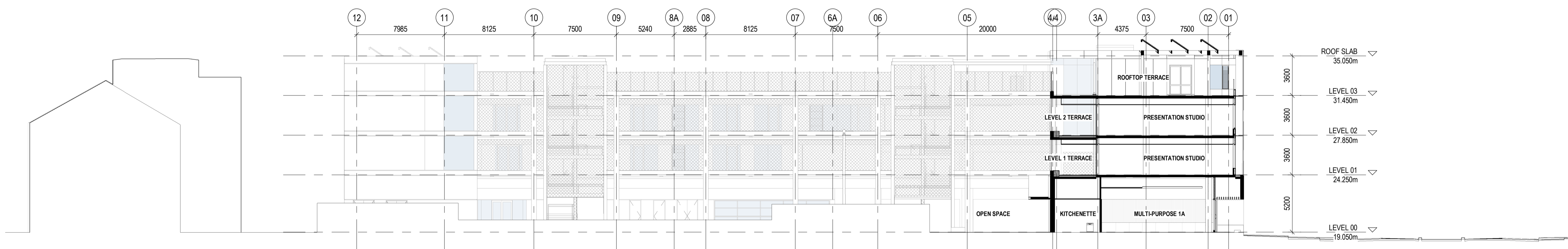
D



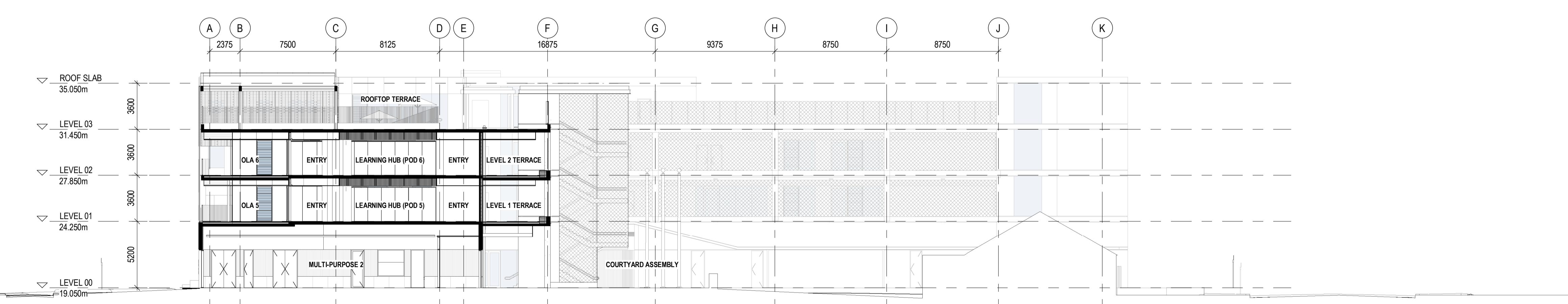
1 SECTION 01
 1:200



2 SECTION 02
 1:200



3 SECTION 03
 1:200



4 SECTION 04
 1:200