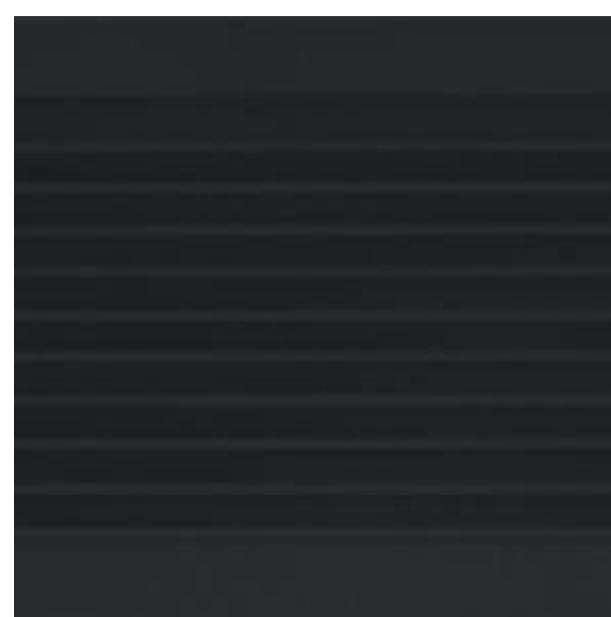
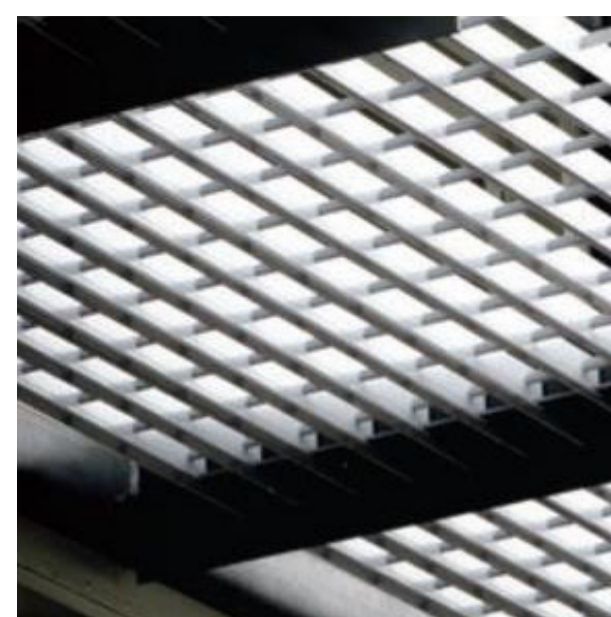


# LIST OF MATERIALS

- AMW-302** Grilles to External Corridor Ceiling Fascia  
Colour: Black Grey RAL 7021
- ASE-202** Trafficable Catwalk - Service Zone Floor Grate
- BAL-101** Metal Balustrade  
1. Vertical balusters: Nominal 75mm x 12mm galvanised mild steel flat stanchions spaced equally at 65mm centre to centre.  
2. Top and bottom rail: Nominal 75mm x 12mm galvanised mild steel flat rails at heights  
4. Finish: Powder coated.  
5. Colour: Black Grey RAL 7021.
- BAL-102** Web Net (Used as a Balustrade on Walkways for Fall Protection)  
1. Woven stainless steel wire mesh.  
2. Size: 2mm gauge wire rope.  
3. Aperture size: 40mm.  
4. Finish: Natural mill finish.
- BAL-105** External Stainless Steel Double Handrail with Support Posts
- BAL-106** Web Net (Used as a Balustrade on Walkways for Fall Protection)  
1. Woven stainless steel wire mesh.  
2. Size: 2mm gauge wire rope.  
3. Aperture size: 40mm.  
4. Finish: Natural mill finish.
- CAN-101** Steel framed canopy with aluminium roofing  
Colour: Black grey RAL 7021.
- CLG-303** Metal Fascia to External Ceiling Perimeter  
Colour: Signal White RAL 9003
- CON-101** Cast In Situ Concrete Coloured - Class 1  
Colour: Pink
- GLS-101** Clear low E sealed double glazed unit.  
Performance requirements:  
1. U-value (W/m<sup>2</sup>K): 2.0.  
2. Solar heat gain coefficient (SHGC): 0.45.  
3. Visual light transmittance (VLT): 62%.
- GLS-102** Insulated Backpainted Double Glazed Unit Panel.  
Backpainted glass colour: Black grey RAL 7021
- GLS-103** Single glazed glass panel. Matt blasted finish applied to front face providing a satin-like finish. Rear face to have an applied reflective coating. **DELETED**
- EWS-101** External Aluminium Wall System - Solid Aluminium Cladding  
Pre-finished aluminium cassette cladding system.  
1. Type and material: Non-combustible, high impact resistant, solid marine grade aluminium sheet.  
2. Thickness: 3mm.  
3. Finish: PVDF.  
4. Colour: Black grey RAL 7021.  
5. Joints between panels: Sealed weathertight joints.
- EWS-104** Fibre Cement Cladding  
Type - Swiss Pearl Facade GRAVIAL  
Colour - Amber 723
- LVR-101** Mechanical Louvres  
Colour: Black grey RAL 7021
- LVR-201** Operable Glass Louvres
- SCN-101** Façade screen system comprising bricks inserted into steel mesh  
1. Mesh: Interwoven grade 316 stainless steel wire mesh.  
2. Bricks:  
a) Material: Terracotta.  
b) Type: Flexbrick tile.  
c) Dimension: 250mm x 95mm.  
d) Colours: Varied colour palette consisting of Dark Venecia Colour, Garrotxa Rustic, Rojo Colour, Venecia Colour and Volga.



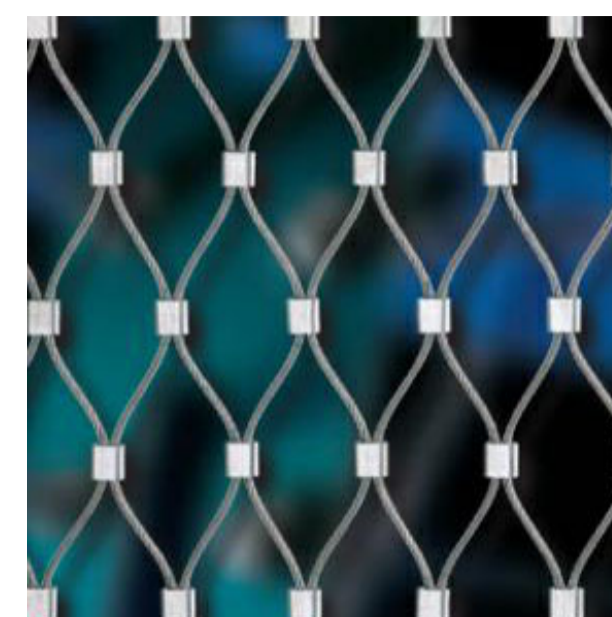
AMW-302



ASE-202



BAL-101



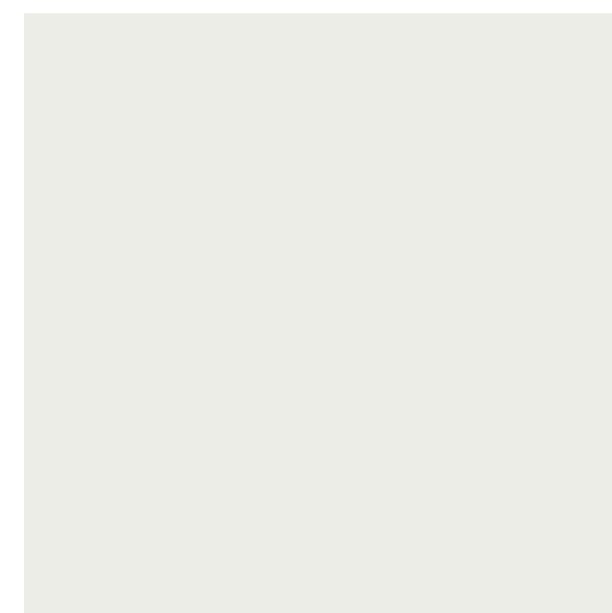
BAL-102  
BAL-106



BAL-105



CAN-101



CLG-303



CON-101



GLS-101



GLS-102



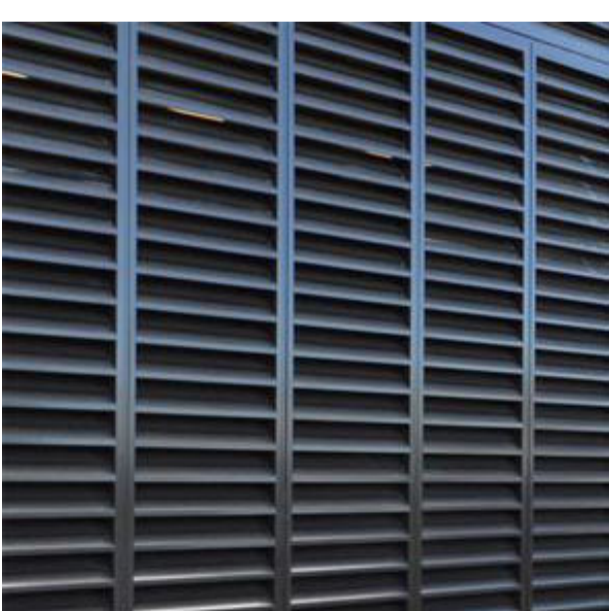
EWS - 101



GLS -103



EWS -104



LVR-101



LVR-201



SCN-101



NSW ARCHITECTS REGISTRATION BOARD /  
NOMINATED ARCHITECTS  
8556 NIWOTSHKA TITCHKOSKY  
7115 JULIAN ASHTON  
7053 MATTHEW BLAIR  
7151 PHILLIP ROSSINGTON  
4037 JAMES GRIESE  
Telephone +61 2 8297 7200  
Facsimile +61 2 8297 7299  
www.bvn.com.au

INTELLECTUAL PROPERTY  
COPYRIGHT BVN ARCHITECTURE PTY LIMITED. UNLESS OTHERWISE  
AGREED IN WRITING ALL RIGHTS TO THIS DOCUMENT ARE SUBJECT TO  
PAYMENT IN FULL OF ALL BVN CHARGES. THIS DOCUMENT MAY ONLY  
BE USED FOR THE EXPRESS PURPOSE AND PROJECT FOR WHICH IT  
HAS BEEN CREATED AND DELIVERED. AS NOTIFIED IN WRITING BY  
BVN AND THIS DOCUMENT MAY NOT BE OTHERWISE USED OR COPIED  
ANY UNAUTHORIZED USE OF THIS DOCUMENT IS AT THE USER'S SOLE  
RISK AND WITHOUT LIMITING BVN'S RIGHTS THE USER RELEASES AND  
INDEMNIFIES BVN FROM AND AGAINST ALL LOSS OR ARISING.

NOTE  
CONTRACTOR TO CHECK AND VERIFY ALL DIMENSIONS ON SITE PRIOR  
TO COMMENCEMENT OF WORK OR PREPARATION OF SHOP DRAWINGS.  
DO NOT SCALE THIS DRAWING

ISSUE	DATE	FOR
A	15/10/21	SSDA
B	24/02/22	SSDA
C	31/01/23	SSDA

STRUCTURAL AND CIVIL ENGINEER

MEINHARDT BONACCI  
+61 2 8247 8400

BUILDING SERVICES

STANTEC  
+61 2 9493 9700

ESD & GREEN STAR

NDY  
+61 2 9928 6800

LANDSCAPE ARCHITECT

TURF DESIGN  
+61 2 8394 9990

BCA AND DDA

PHILLIP CHUN  
+61 2 9412 23202

PROJECT MANAGER

COLLIERS INTERNATIONAL  
+61 2 9257 0222

END USER

CITY OF SYDNEY  
+61 2 9265 9333

END USER

NSW DEPARTMENT OF EDUCATION  
1300 679 332

CLIENT

SCHOOL INFRASTRUCTURE NSW

PROJECT

GREEN SQUARE INTEGRATED

COMMUNITY FACILITY AND SCHOOL

ZETLAND AVENUE, GREEN SQUARE 2017

BVN PROJECT NUMBER

1908014.000

DRAWING KEY

ZETLAND AVENUE

PORTMAN STREET

JOYNTON AVENUE

TRUE NORTH PROJECT NORTH

GRAPHIC SCALE

SCALE

0 2000 5000

1:100@A1

STATUS

SSDA

DRAWING

BUILDING MATERIALS -

EXTERNAL

ISSUE

DA-C10-XX-03

C