

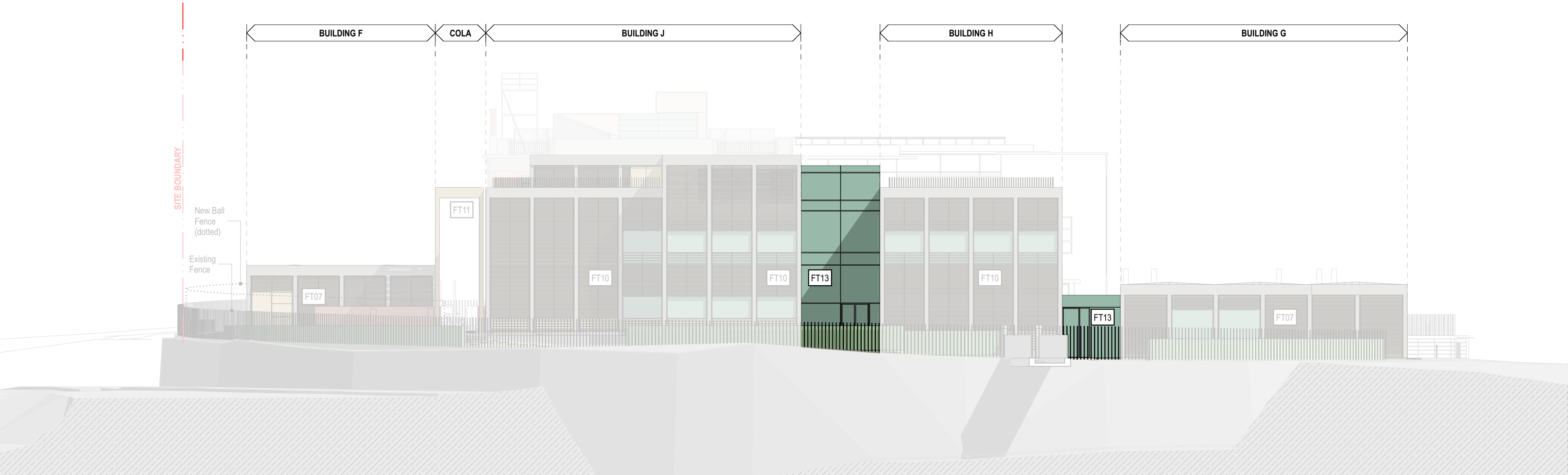
FT13 Glass infills
Building J, H & G

The new glazed infills between building J, H and G serve as open circulation and connection spaces and are accentuated by a metal framed glazing system. The infills' transparency allows for connecting views to the city as well as to the Central Plaza. The simplistic appearance accentuates the concrete frame articulation of Building J, H and G.

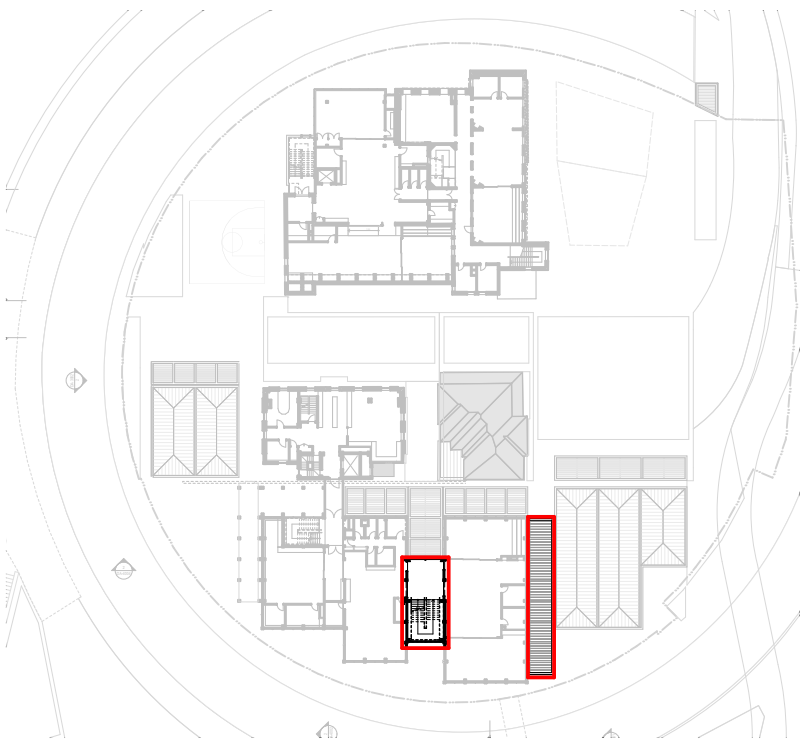
The verticality and materiality of the exposed concrete frames ensures it retains cohesion with the other new additions to the southern part of the campus.



NORTH ELEVATION (CENTRAL PLAZA)



SOUTH ELEVATION



FACADE TYPE EXTENT

