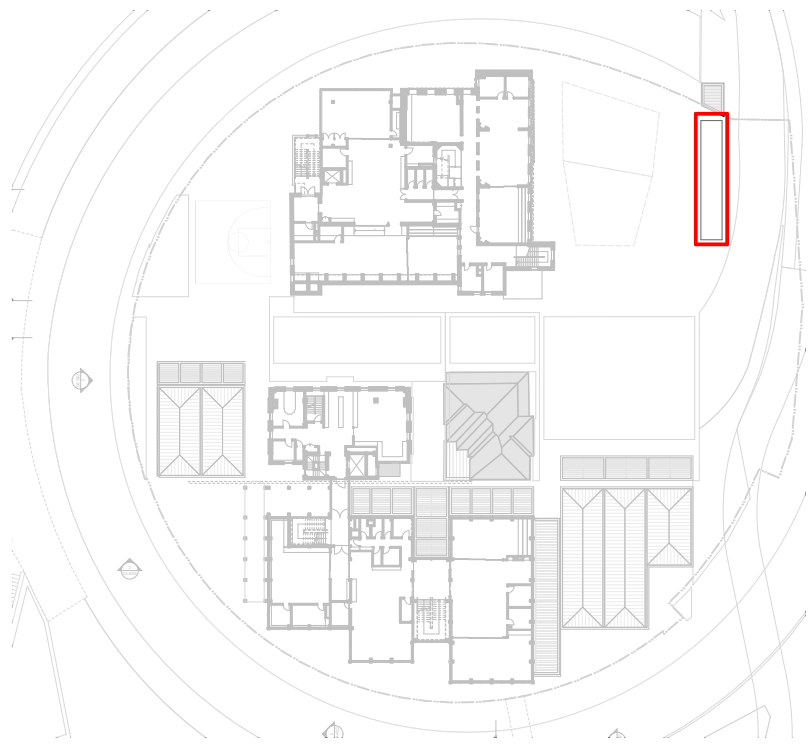


FT12
Services enclosure

This subordinate structure is not only the base for the new Amphitheatre, but also accommodates service areas like garbage storage and the fire booster system. Following the architectural language on site, it is subdivided into partitions of timber profiled cladding between cross laminated timber frames. Concealed doors take away any association with typical service sheds.



02510m

GENERAL NOTES

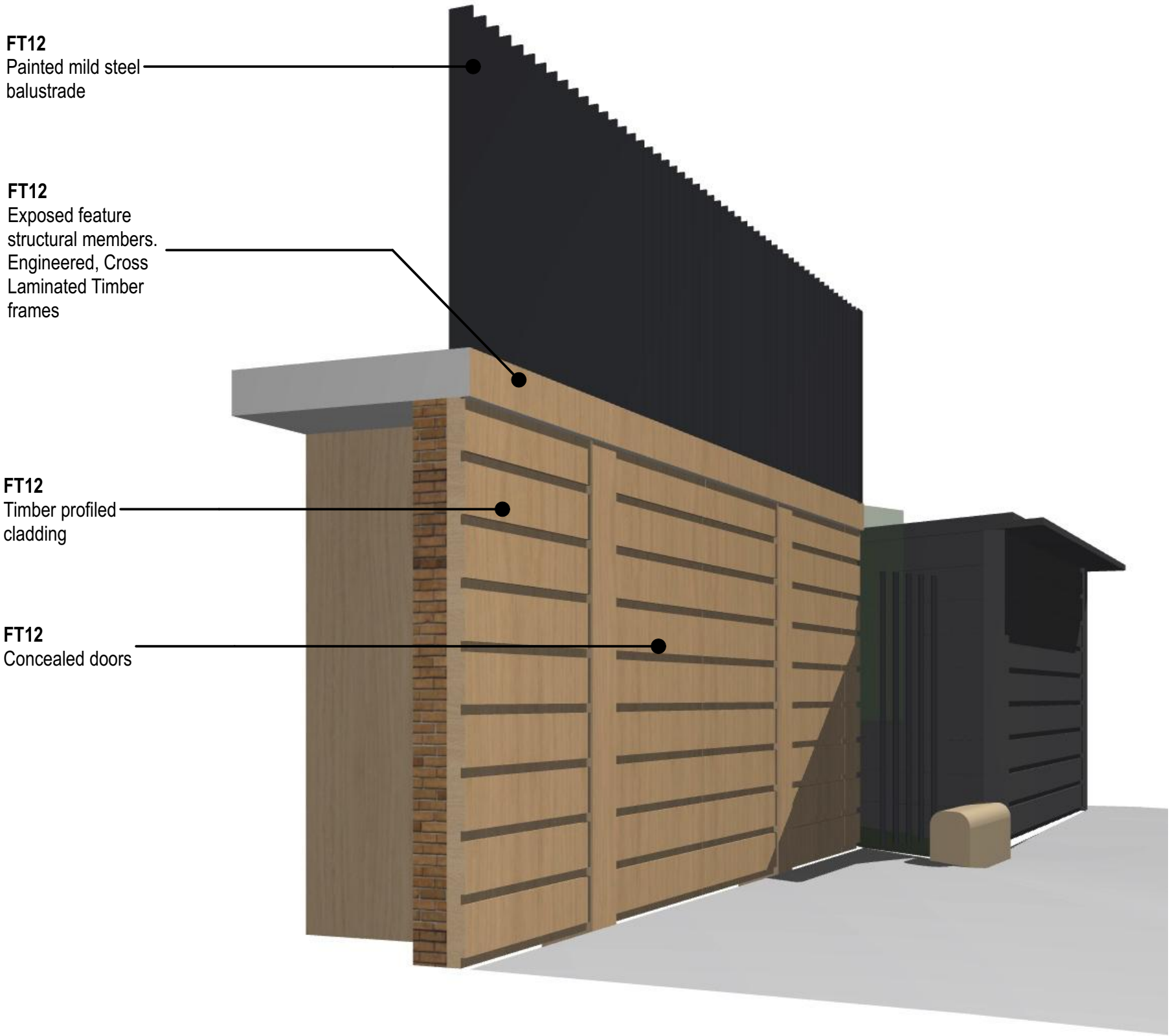
ALL DIMENSIONS AND EXISTING CONDITIONS SHALL BE CHECKED AND VERIFIED BY THE CONTRACTOR BEFORE PROCEEDING WITH THE WORK.
ALL LEVELS RELATIVE TO 'AUSTRALIAN HEIGHT DATUM'.
DO NOT SCALE DRAWINGS.
USE FIGURED DIMENSIONS ONLY.

legend

FACADE TYPE EXTENT



EAST ELEVATION



SSD A01	18/12/19	State Significance Development Application	CTK
rev	date	name	by chk
<div><div>fjmt studio architecture interiors landscape urban community</div><div>sydney melbourne uk Level 5, 70 King Street E • 61 2 9251 7077 • fjmtstudio.com</div></div> <div><div>fjmt</div></div>			
project Fort Street Public School Observatory Hill Sydney NSW 2000			
title Facade Diagrams FT12 Services Enclosure			
scale	1:200 @ A1	first issued	18/10/19
project code	sheet no.	revision	
FSS	DA-5909	SSDA01	