

FT08 Retained brickwork and timber window facades

FT09 New elevator overrun

FT13 N New Bridge Connection to MET

Building M

Almost all of the MET's existing heritage facade is proposed to be retained in response to its historical and visual importance. All existing brickwork and timber elements shall be repaired and made good to existing where required in accordance with the Heritage Architect's instructions. A subtle, finely detailed and light weight framed pavilion-like structure on the roof marks the new elevator serving this level.

The sizing of the lift addition will be the subject of refinement during detailed design development to ensure its size and form is restrained as much as possible. A new transparent bridge with glazed infills and a metal framed structure system connects Building J and the MET and is the only point at which the MET facade is proposed to be altered. By these virtues the bridge will appear distinct from the MET.



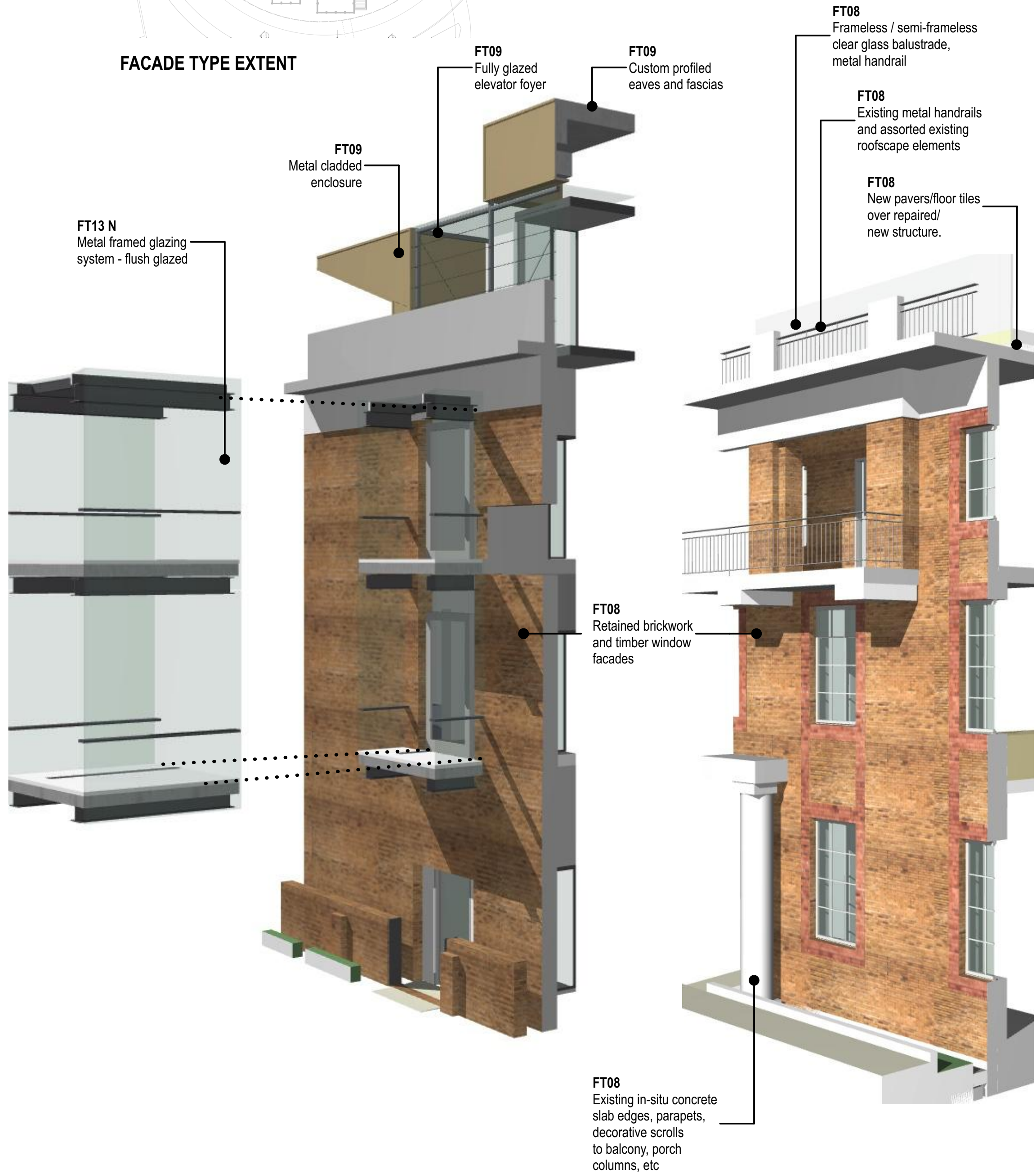
NORTH ELEVATION (CENTRAL PLAZA)



EAST ELEVATION



FACADE TYPE EXTENT



0 2 5 10m

GENERAL NOTES

- ALL DIMENSIONS AND EXISTING CONDITIONS SHALL BE CHECKED AND VERIFIED BY THE CONTRACTOR BEFORE PROCEEDING WITH THE WORK.
- ALL LEVELS RELATIVE TO 'AUSTRALIAN HEIGHT DATUM'.
- DO NOT SCALE DRAWINGS.
- USE FIGURED DIMENSIONS ONLY.

Legend

SSD	18/12/19	State Significance	CTK
A01		Development Application	
rev	date	name	by chk

fjmt studio architecture interiors landscape urban community
sydney melbourne uk
Level 5, 70 King Street E +61 2 9251 7077 • fjmtstudio.com

project
Fort Street Public School
Observatory Hill
Sydney NSW 2000

title
Facade Diagrams
FT08 / FT09 / FT13 N Building M

scale	1:200 @ A1	first issued	18/10/19
project code	FSS	sheet no.	DA-5906
		revision	SSDA01

State Significance Development Application