

FT05 Existing cottage building
FT06 Messenger's Cottage extension
Building C

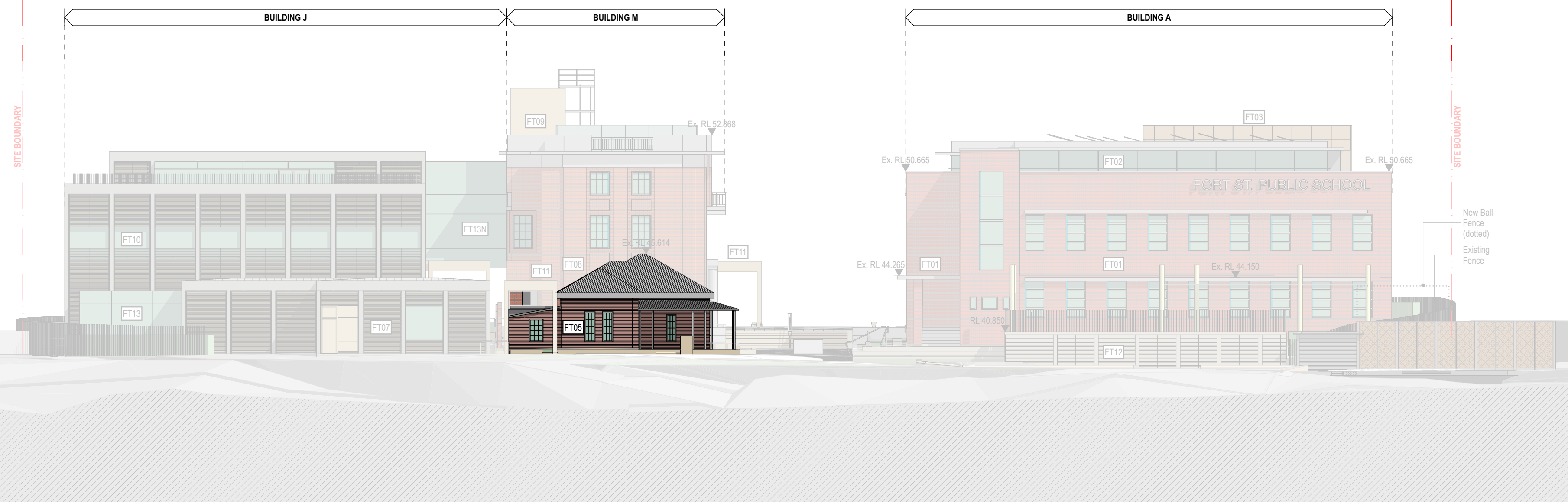
As the centrepiece of the new Central Plaza, the existing heritage item facade is proposed to be retained. All existing brickwork, ashlar treatments and timber elements shall be repaired and made good to existing where required in accordance with heritage architect's instructions.

A small extension to the South East adapts the verandah language and is made distinctive by its homogenous and modest metal cladding and awning roof structure. Its scale and proportions ensure that it is deferential to the original cottage form.

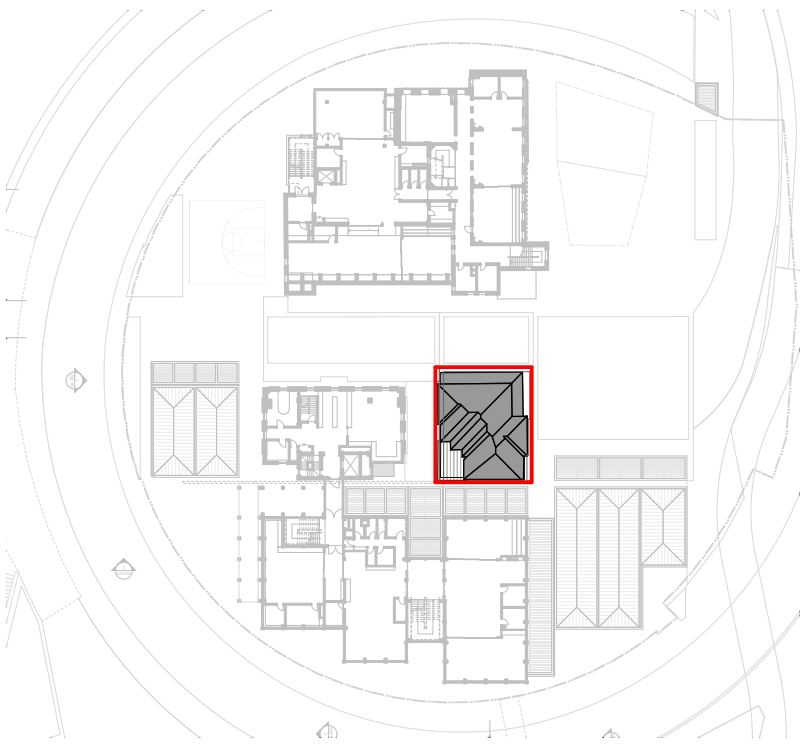


NORTH ELEVATION (CENTRAL PLAZA)

WEST ELEVATION



EAST ELEVATION

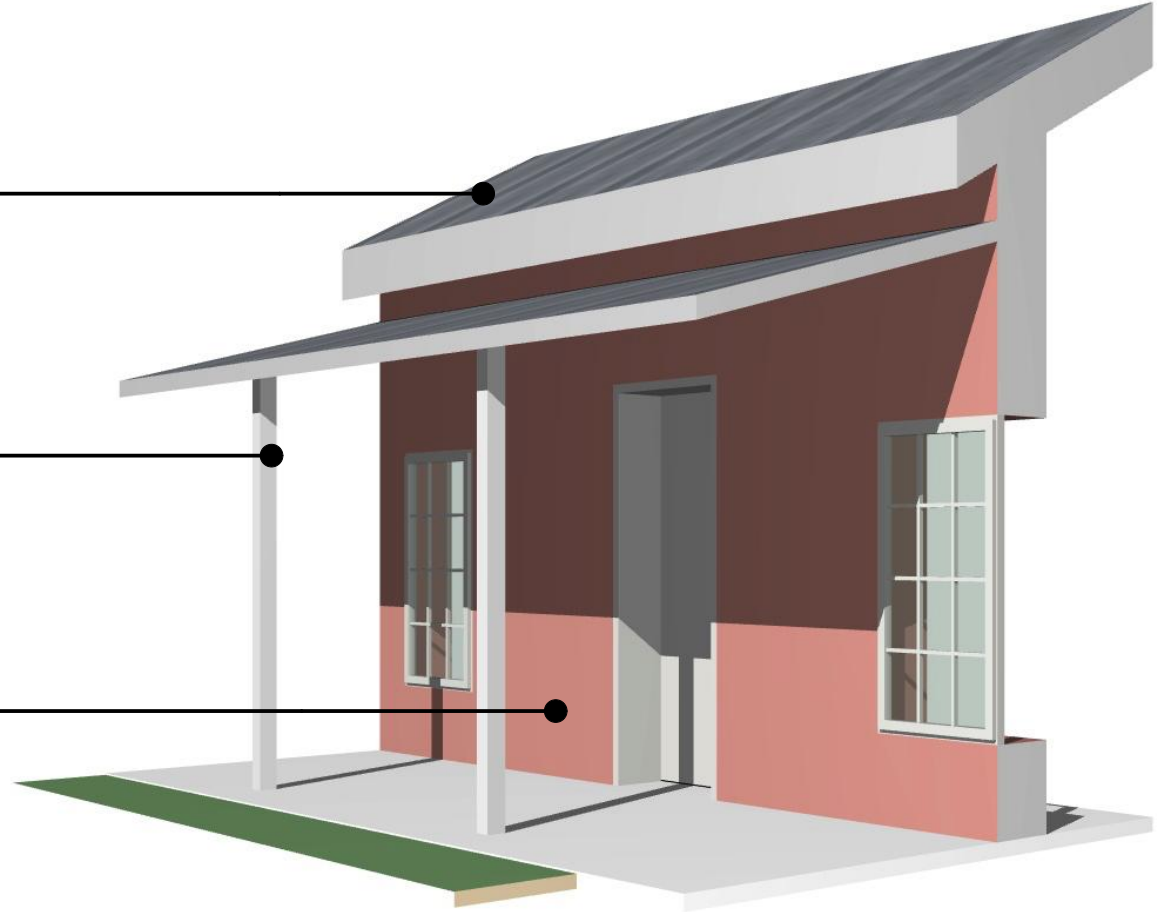


FACADE TYPE EXTENT

FT05
Existing zinc corrugated
roofing and assorted
roofing elements

FT05
Existing general timber
elements including
verandah frames,
windows, etc.

FT05
Existing painted/
ashlar painted brickwork
to external walls, chimney
and retained additions.

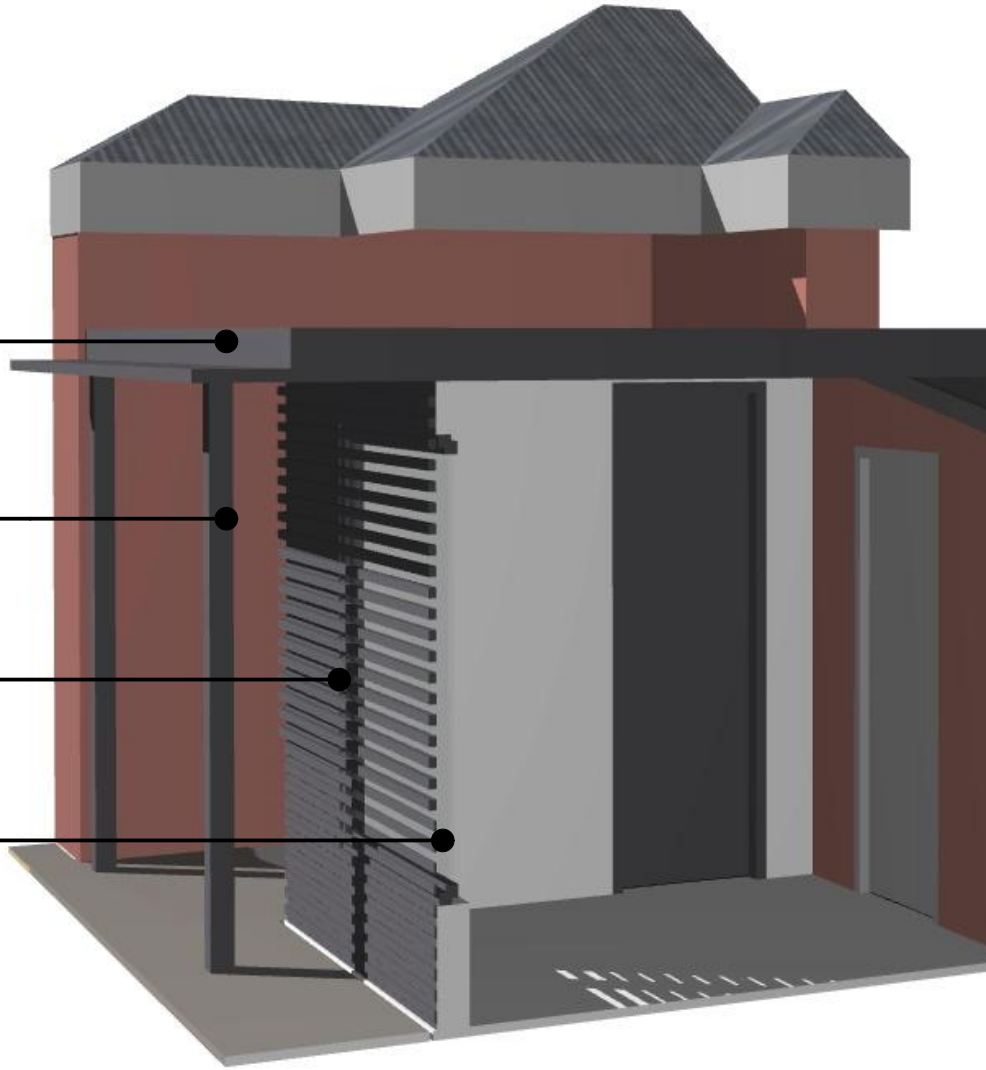


FT06
Standing seam roof,
custom profiled eaves
and fascias.

FT06
Painted mild steel
verandah columns

FT06
Metal battens,
profiled aluminium

FT06
Flush glazed aluminium
framed windows



02510m

GENERAL NOTES

ALL DIMENSIONS AND EXISTING CONDITIONS SHALL BE CHECKED AND VERIFIED BY THE CONTRACTOR BEFORE PROCEEDING WITH THE WORK.

ALL LEVELS RELATIVE TO 'AUSTRALIAN HEIGHT DATUM'.

DO NOT SCALE DRAWINGS.

USE FIGURED DIMENSIONS ONLY.

Legend

SSD A01	18/12/19	State Significance Development Application	CTK
rev	date	name	by chk
<div><div>fjmt studio architecture interiors landscape urban community</div><div>sydney melbourne uk</div><div>Level 5, 70 King Street E +61 2 9251 7077 www.fjmtstudio.com</div></div> <div>fjmt</div>			
project Fort Street Public School Observatory Hill Sydney NSW 2000			
title Facade Diagrams FT05 / FT06 Building C			
scale	1:200 @ A1	first issued	18/10/19
project code	sheet no.	revision	
FSS	DA-5904	SSDA01	