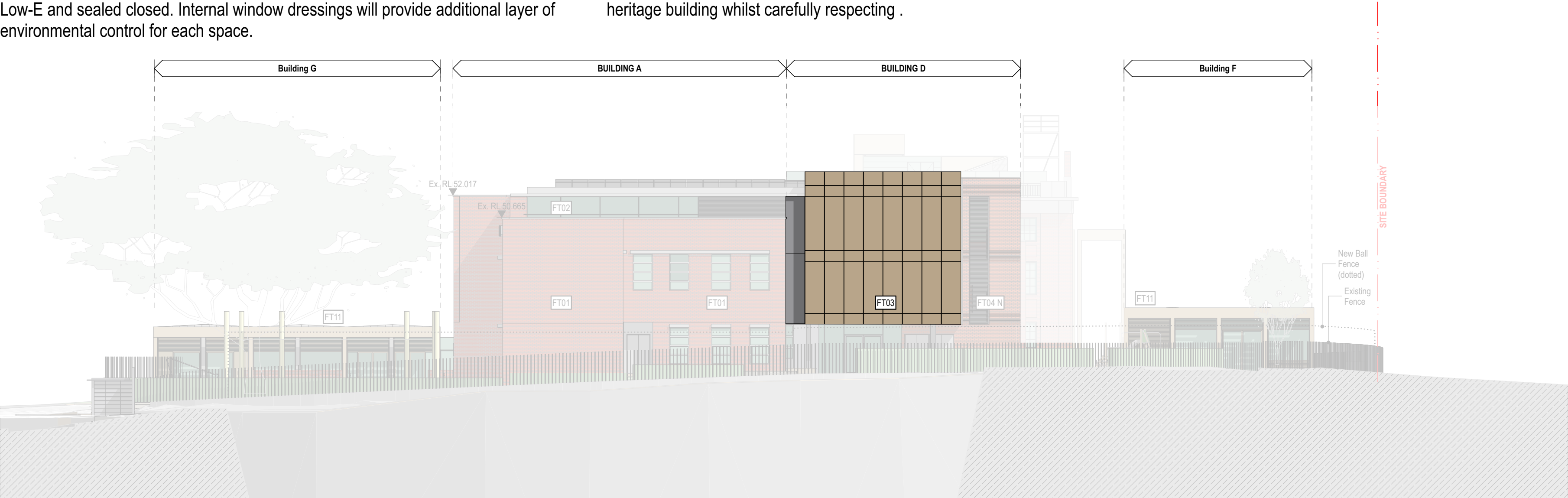


FT03 Glazed, aluminium framed facade system
Building D

The facade is located to the north west of the existing Fort Street Public School building and acts as a bookend to the original form, wrapping around this corner to meet the adjacent stair facade. It shall consist of a full height glazed aluminium facade, with flush-glazed framing system and an integrated layer of expanded metal mesh. Clear glass windows to homebases shall be high performance, clear glass Low-E and sealed closed. Internal window dressings will provide additional layer of environmental control for each space.

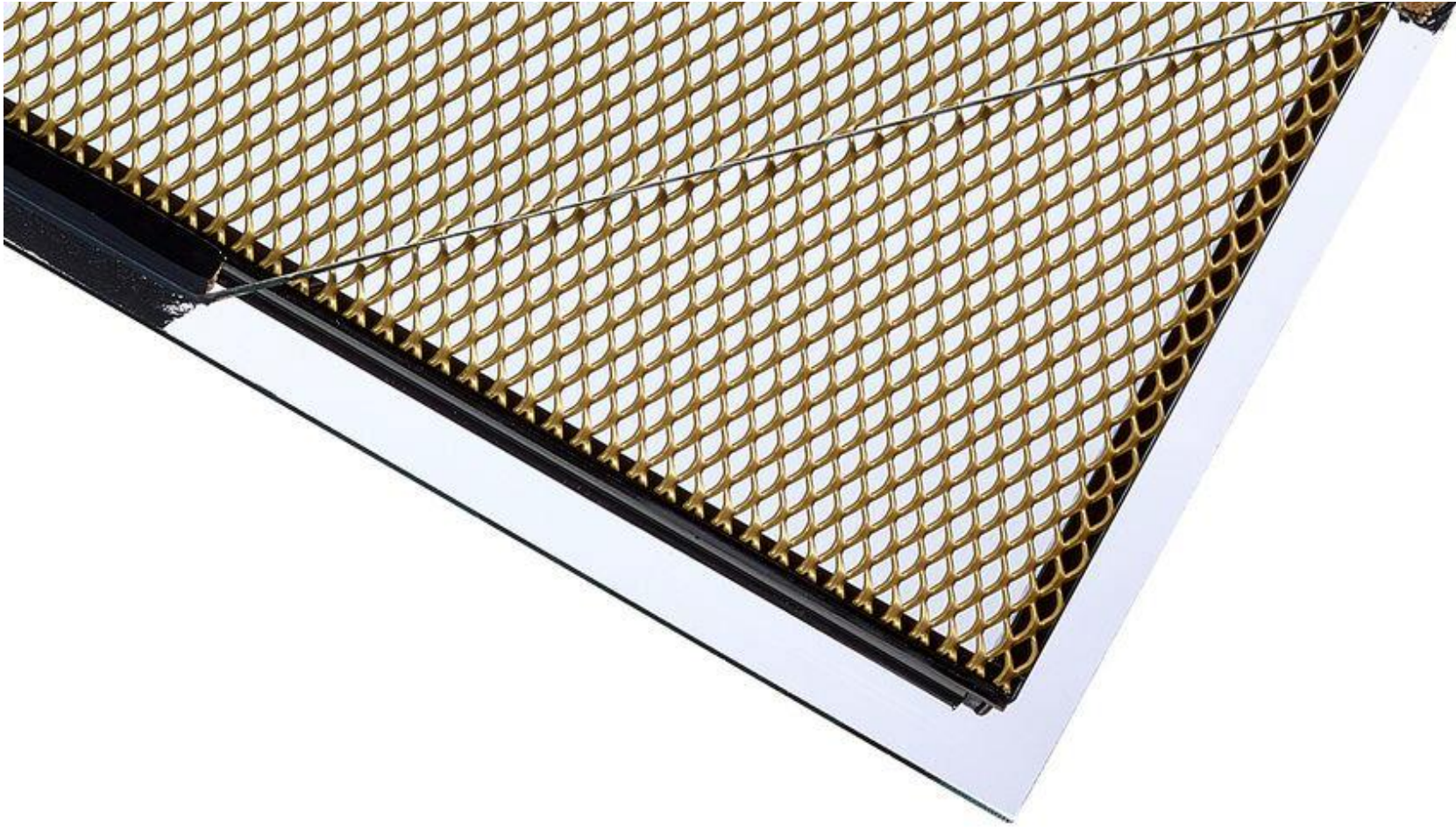
This form sits slightly higher than the existing facade and connects with features of the new rooftop addition at Level 2, whilst displaying a relationship with the existing datums. Small vertical margins between the old and new provides important articulation and demarcation from the existing brickwork. These key design moves in the form, details and materials clearly articulate it as an extension to the surrounding heritage building whilst carefully respecting .



NORTH ELEVATION



WEST ELEVATION



FACADE TYPE EXTENT

