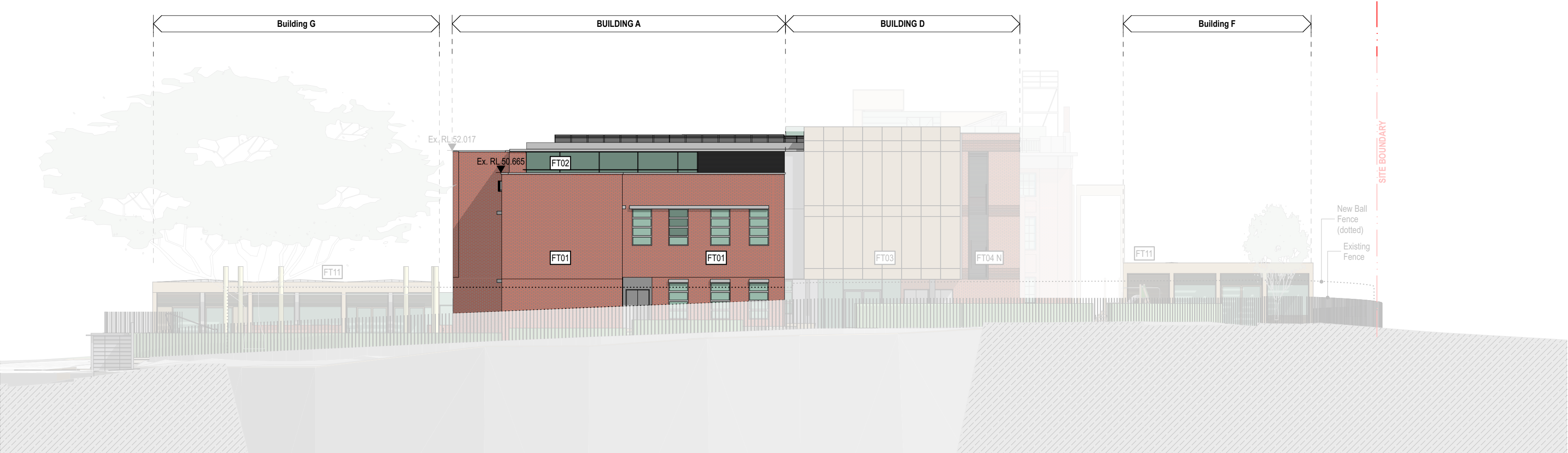


FT01 Existing school building
FT02 Glazed, aluminium framed facade system
Building A

Existing heritage item facade FT01 is proposed to be retained. All existing brickwork, pointing, concrete feature elements, metal drainage elements and the like are to be retained, repaired and made good to existing where required. Existing non-original windows to be replaced with new acoustic windowsets to detail. Heritage architect to inform measures for all such elements.

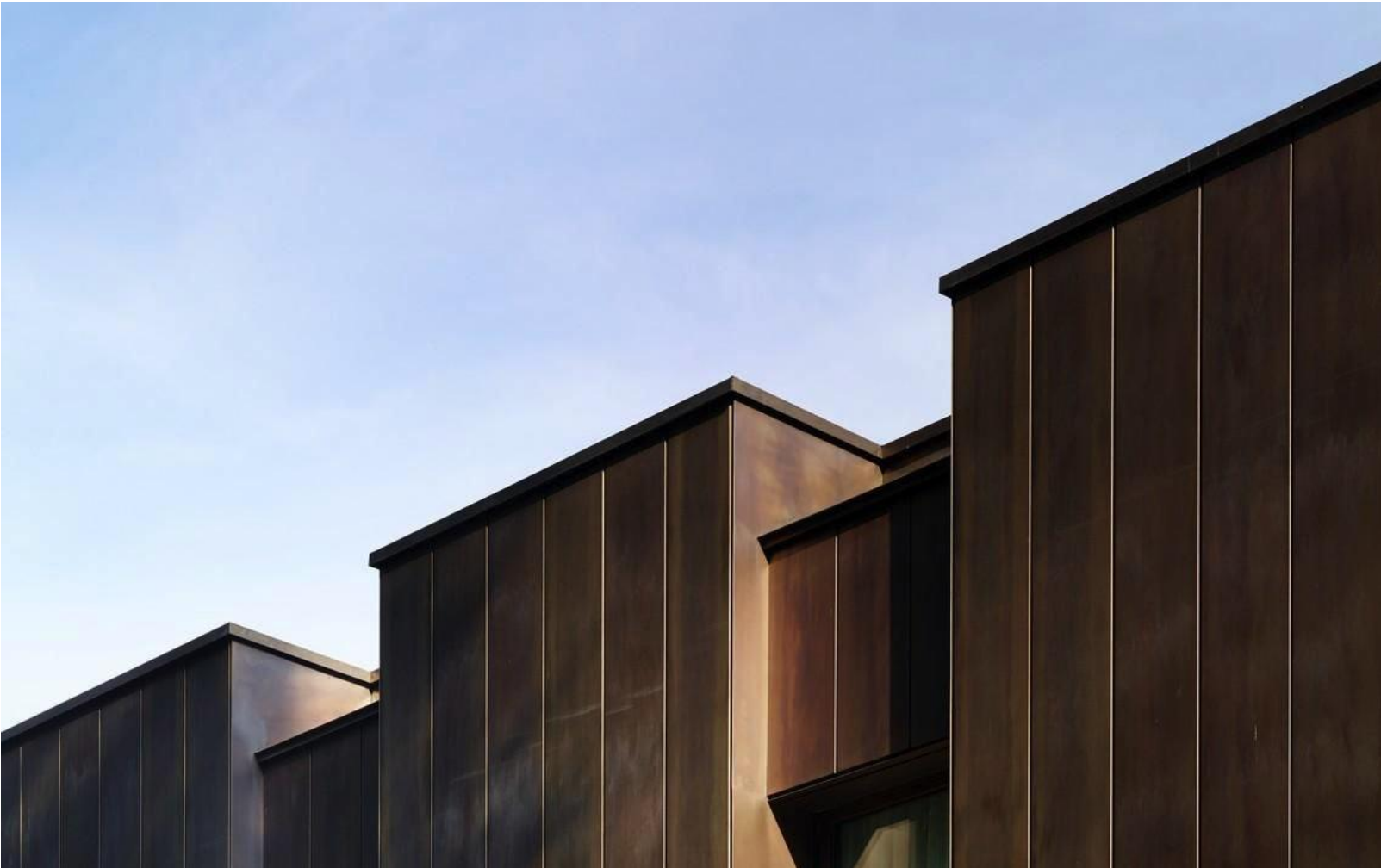
New FT02 facade to be configured with recessive elements to preserve hierarchy to existing. New frames, eaves, parapets and the like to be fabricated from powdercoated metal elements to custom profiles. Clear glass windows to homebases shall be high performance, clear glass Low-E and sealed closed. Internal window dressings will provide additional layer of environmental control for each space.



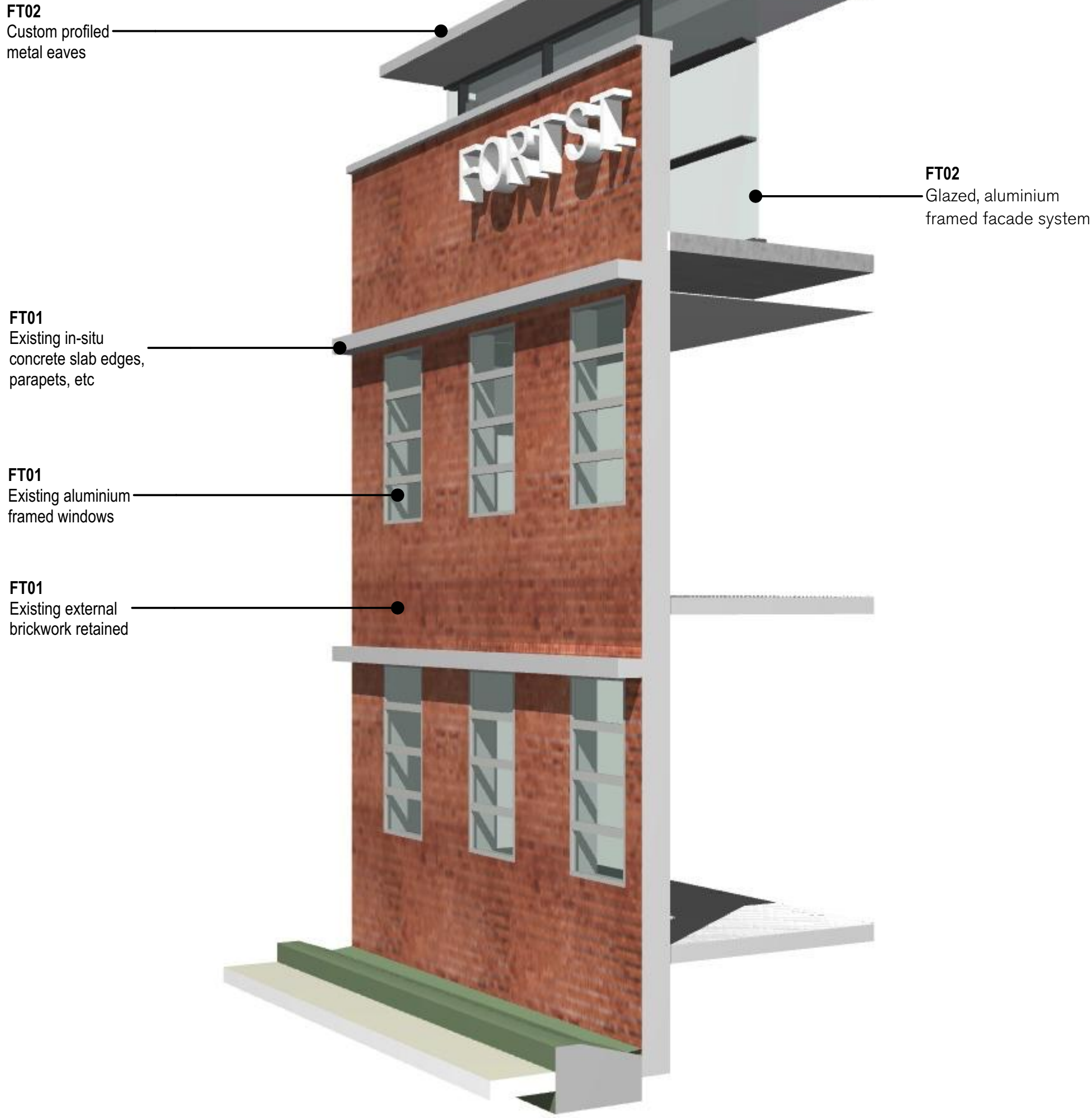
NORTH ELEVATION



EAST ELEVATION



FACADE TYPE EXTENT



02510m

GENERAL NOTES

ALL DIMENSIONS AND EXISTING CONDITIONS SHALL BE CHECKED AND VERIFIED BY THE CONTRACTOR BEFORE PROCEEDING WITH THE WORK.

ALL LEVELS RELATIVE TO 'AUSTRALIAN HEIGHT DATUM'.

DO NOT SCALE DRAWINGS.

USE FIGURED DIMENSIONS ONLY.

legend

SSD	18/12/19	State Significance	CTK
A01		Development Application	
rev	date	name	by chk
<div><div>fjmt studio architecture interiors landscape urban community</div><div>sydney melbourne uk</div><div>Level 5, 70 King Street E +61 2 9251 7077 • fjmtstudio.com</div></div> <div>fjmt</div>			
project			
Fort Street Public School			
Observatory Hill			
Sydney NSW 2000			
title			
Facade Diagrams			
FT01 / FT02 Building A			
scale	1:200 @ A1	first issued	18/10/19
project code	sheet no.	revision	
FSS	DA-5901	SSDA01	