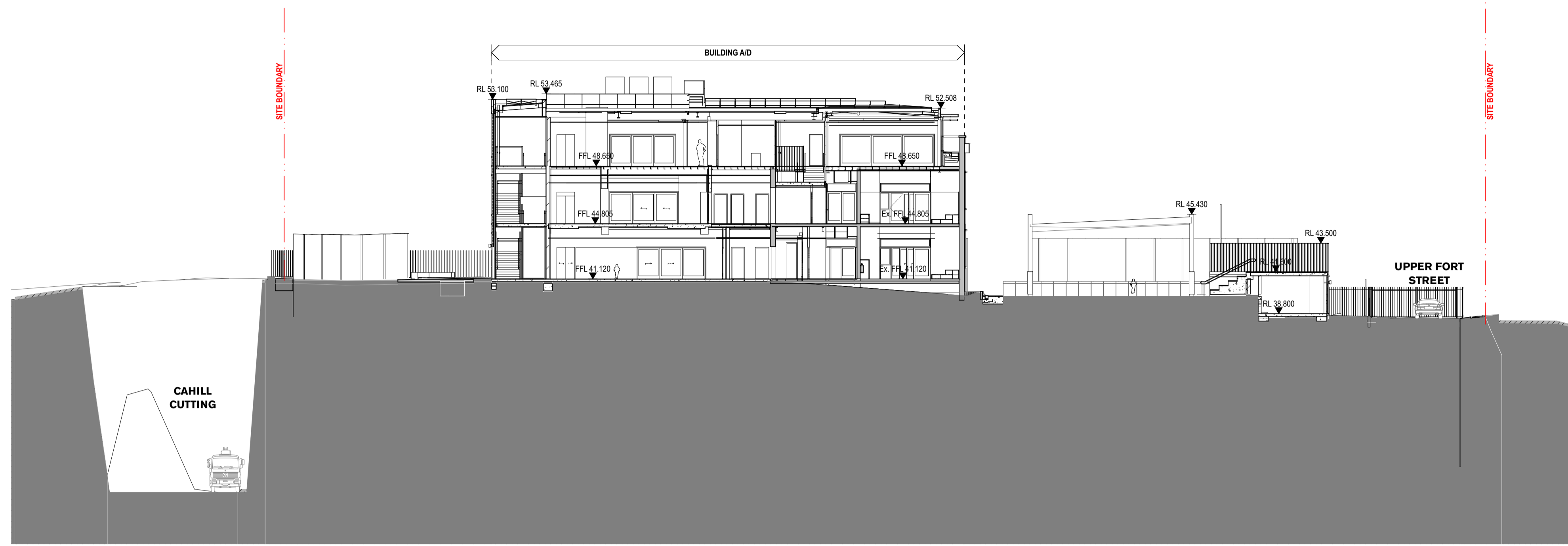


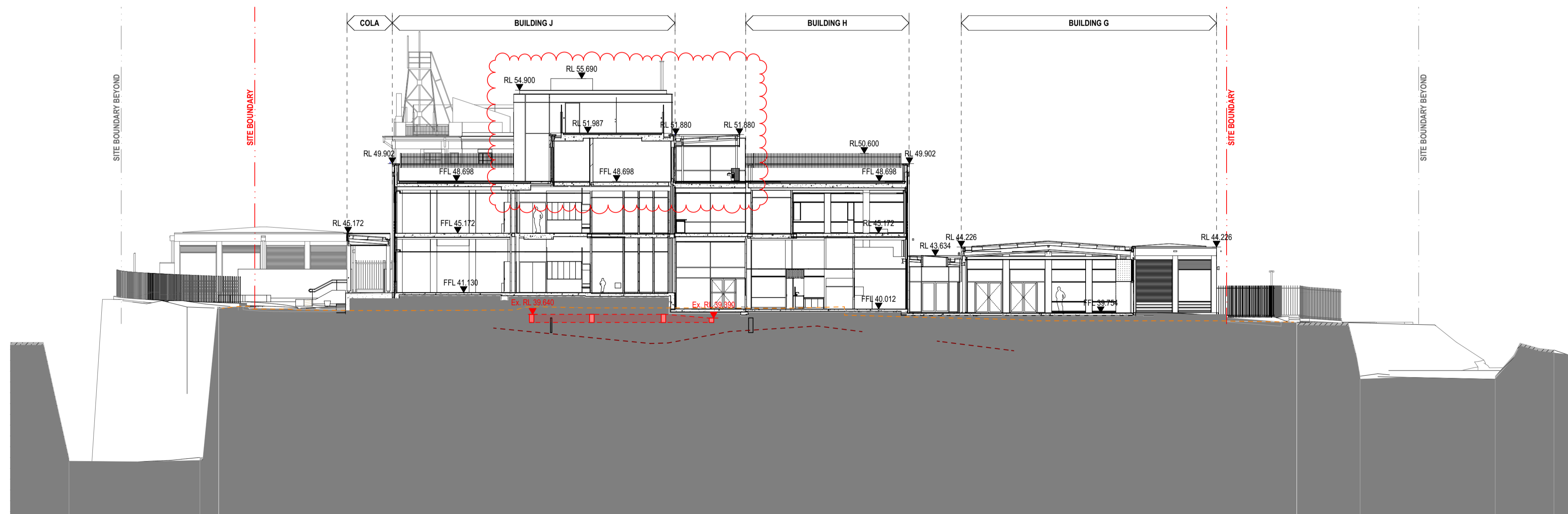


- GENERAL NOTES**
- ALL DIMENSIONS AND EXISTING CONDITIONS SHALL BE CHECKED AND VERIFIED BY THE CONTRACTOR BEFORE PROCEEDING WITH THE WORK.
 - ALL LEVELS RELATIVE TO AUSTRALIAN HEIGHT DATUM.
 - DO NOT SCALE DRAWINGS.
 - USE FIGURED DIMENSIONS ONLY.

Legend



1 SECTION Section At Building A-D
1:200



2 SECTION Section At Buildings G-J
1:200

NSW GOVERNMENT | **Planning, Industry & Environment**

Issued under the Environmental Planning and Assessment Act 1979

Approved Section 4.55(2) Application No: SSD-10340-Mod-1

Granted: 22 December 2021 Sheet No: 12 of 14 Signed: JC

rev	date	name	by	chk
SSDA02	29/10/21	S455 Modification - Amended	AWY	
SSDA02	28/1/21	S455 Modification	AWY	
SSDA01.1	28/1/21	State Significance Development Application	AWY	

fynt studio architecture interiors landscape urban community
sydney melbourne uk
Level 5, 70 King Street +61 2 9251 7077 | fyntstudio.com



project
Fort Street Public School
Observatory Hill
Sydney NSW 2000

title
4000 1:200 Sections
Sections 4

scale	1:200 @ A1	first issued	30/9/19
project code	FSS	sheet no.	DA-4004
		revision	SSDA02