

# Fort Street Public School

Information pack | March 2021



Artist impression of the Fort Street Public School upgrade

The NSW Government is investing \$7 billion over four years, continuing its program to deliver more than 200 new and upgraded schools to support communities across NSW. This is the largest investment in public education infrastructure in the history of NSW.

The NSW Department of Education is committed to delivering new and upgraded schools for communities across NSW. The delivery of these important projects is essential to the future learning needs of our students and supports growth in the local economy.

A project is underway to upgrade Fort Street Public School to cater for growing enrolments and provide exciting new spaces for learning and teaching.

The project will deliver:



Up to **24** homebase classrooms



A new hall



A new library



Out of School Hours Care (OSHC)



New play spaces



Covered Outdoor Learning Area (COLA)

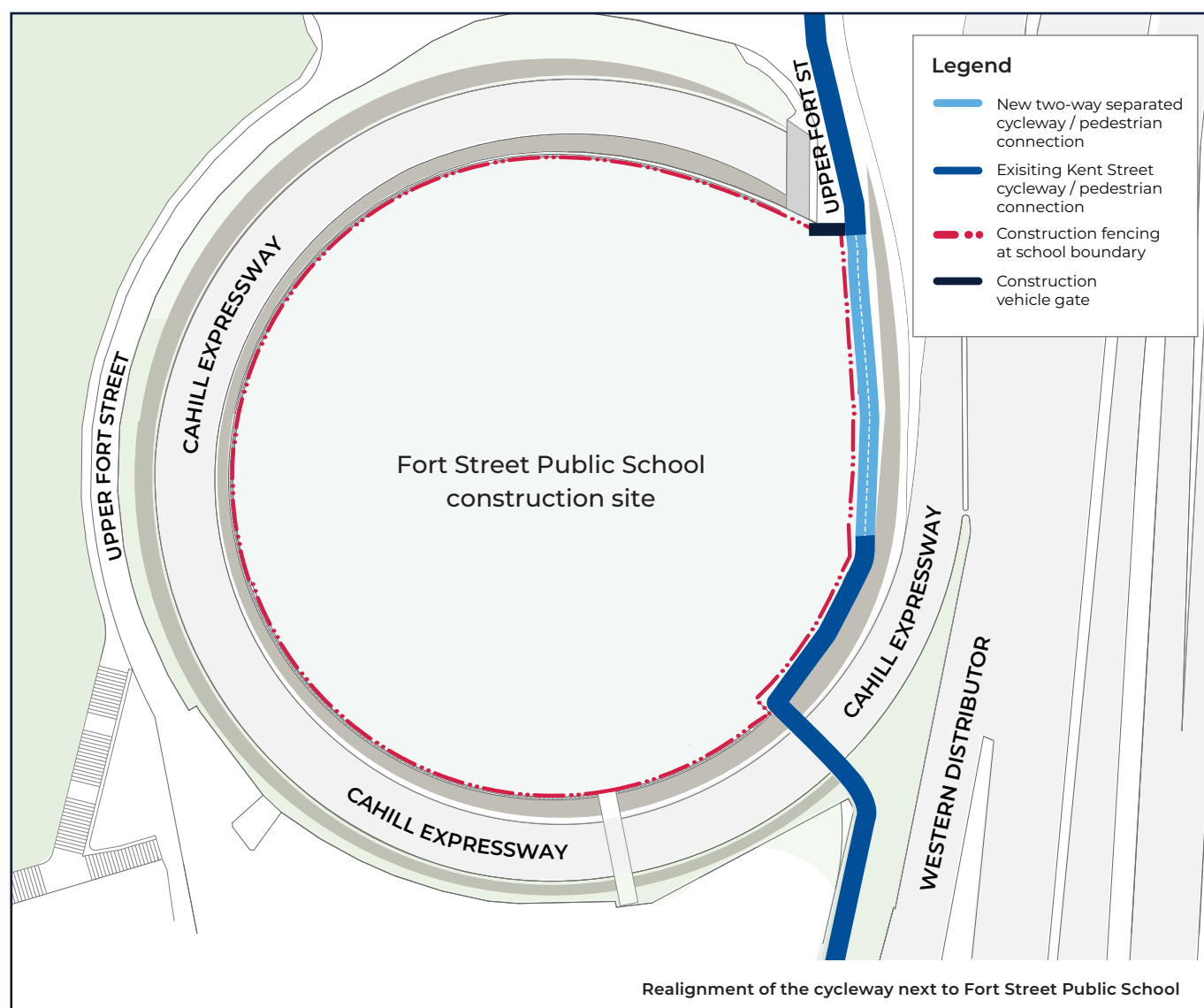
# Update on the Sydney Harbour Bridge southern cycleway

Following extensive community and stakeholder engagement about the proposed temporary diversion of the Sydney Harbour Bridge cycleway via Kent Street, a decision has been made to maintain the existing cycleway along Upper Fort Street for the duration of construction works for the Fort Street Public School upgrade.

To ensure the cycleway can operate safely while construction works are underway, we need to make a minor realignment of the cycleway alongside the Fort Street Public School that will see the cycleway pass alongside the eastern perimeter of the site (i.e. closer to the Cahill Expressway). See the map below for more detail.

This realignment will require some minor construction works which will take up to three weeks to complete. While these works are underway, bike riders will need to use a temporary detour along Watsons Road and along Kent Street.

We will provide the community more information about the works required to make this realignment and the timeframes for the work to be undertaken in the coming weeks.

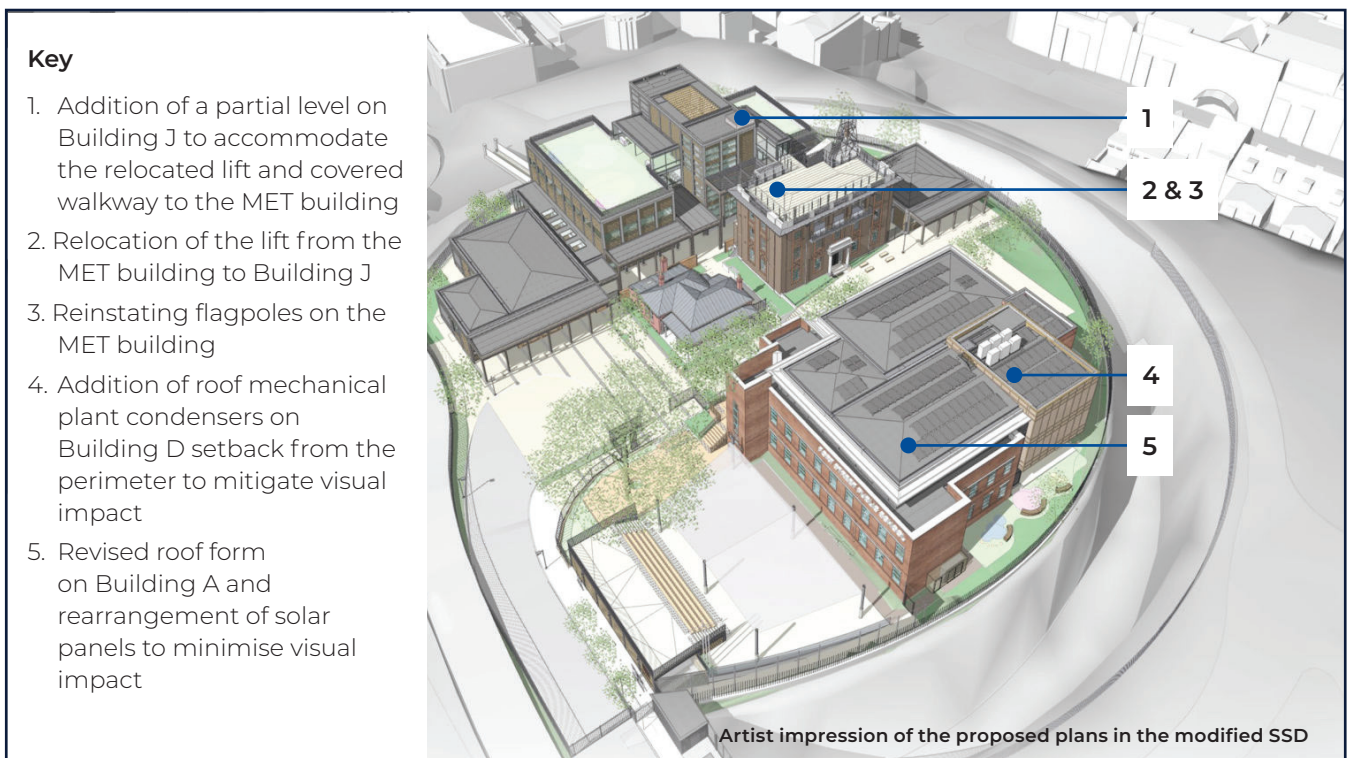
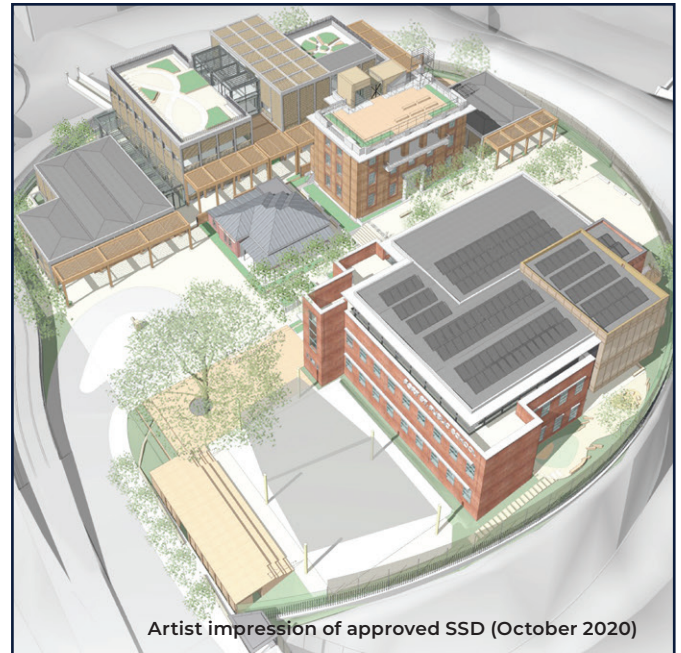


# Design modifications

To improve the overall functionality of the upgrade, we are proposing to make several design modifications to both internal and external features of the school upgrade. These proposed changes aim to:

- enhance the environmental performance of the building
- further minimise visual impacts
- further increase the protection of heritage fabric
- improve internal circulation space.

Some of the key proposed changes to the design are shown in the images below.



## Public exhibition SSD modifications

These proposed changes will be submitted to the Department of Planning, Industry and Environment (DPIE) as a modification to the approved State Significant Development (SSD) application.

DPIE will soon place the Fort Street Public School upgrade SSD modification on public exhibition. During this time, you can get more information and provide feedback on the SSD by going to: [planningportal.nsw.gov.au/major-projects/project/13596](https://planningportal.nsw.gov.au/major-projects/project/13596)



# Frequently asked questions

## Cycleway realignment

### Why are you no longer diverting the Sydney Harbour Bridge southern cycleway down Kent Street?

A temporary separated cycleway diversion along Kent Street was School Infrastructure NSW's initial option as it provided a safe and direct alternative for bike riders during construction of the Fort Street Public School.

However, due to stakeholder and local community feedback about the proposed temporary diversion on Millers Point's local street network we will now be keeping the cycleway in its existing location, with a slight realignment. This has been developed in consultation with Transport for NSW and the City of Sydney.

### Why do you need to realign the cycleway alongside the Fort Street Public School?

We need to realign this section of the cycleway to ensure it can operate safely while construction of the Fort Street Public School upgrade is underway.

### Why don't you deliver the Sydney Harbour Bridge Cycleway upgrade before you start the school upgrade?

The Sydney Harbour Bridge Cycleway Access Program is being managed separately to this project by Transport for NSW.

Please contact Transport for NSW for more information at:

Phone: 1800 581 595

Email: [sydneyharbourbridgeprojects@rms.nsw.gov.au](mailto:sydneyharbourbridgeprojects@rms.nsw.gov.au)

### When will works start on the realignment of the cycleway?

We expect these works to start in April and take up to three weeks to complete. We will give the community more detail about these works and the timing before they take place.

### What detour will bike riders use while the cycleway realignment works are underway?

Bike riders will need to use an on-road detour along Watsons Road and Kent Street during the short duration to complete the realignment.

There will be a traffic manager in place on Upper Fort Street to redirect bike riders to this detour.

## State Significant Development (SSD) application modifications

### Why are you making modifications to the design?

These proposed modifications are intended to:

- enhance the environmental performance of the building
- further minimise visual impacts
- further increase the protection of heritage fabric
- improve internal circulation space.

### Can I provide feedback on the modifications?

DPIE will soon place the Fort Street Public School upgrade SSD modification on public exhibition. During the exhibition period, you can get more information and provide feedback on the SSD by going to: [planningportal.nsw.gov.au/major-projects/project/13596](https://planningportal.nsw.gov.au/major-projects/project/13596)

## Stay informed



### Website

Stay up to date by visiting the School Infrastructure NSW website [schoolinfrastructure.nsw.gov.au](https://schoolinfrastructure.nsw.gov.au)



### Email

Contact the Community Engagement team by emailing [schoolinfrastructure@det.nsw.edu.au](mailto:schoolinfrastructure@det.nsw.edu.au)



### Phone

Contact us between 9:00am and 5:00pm, Monday to Friday on **1300 482 651**