

GENERAL NOTES

- ALL DIMENSIONS AND EXISTING CONDITIONS SHALL BE CHECKED AND VERIFIED BY THE CONTRACTOR BEFORE PROCEEDING WITH THE WORK.
- ALL LEVELS RELATIVE TO AUSTRALIAN HEIGHT DATUM.
- DO NOT SCALE DRAWINGS.
- USE FIGURED DIMENSIONS ONLY.

Legend

- DEMOLITION
- * WINDOW REMOVED AND WALL UNDERNEATH DEMOLISHED TO FLOOR LEVEL

- REFER TO PROJECT HERITAGE ARCHITECTS SCHEDULE OF WORKS AND SPECIFICATIONS FOR DETAILS OF ALL HERITAGE INTERFACES. THE MANNER OF ALL REMEDIATION, DISMANTLING, CAREFUL DEMOLITION AND DESTRUCTIVE DEMOLITION WORKS SHALL BE CONDUCTED IN ACCORDANCE WITH THEIR DIRECTIONS. ANY DEVIATION FROM THESE INSTRUCTIONS ARE TO BE REVIEWED AND VETTED BY THE HERITAGE ARCHITECT PRIOR TO COMMENCEMENT.
- PRESERVE AND MAKE SAFE REMEDIATED AND RETAINED WORKS IDENTIFIED IN THE HERITAGE ARCHITECTS SCOPE OF WORKS FOR ASSESSMENT BY THE PROJECT ARCHITECT AND HERITAGE ARCHITECT.
- ALL DISMANTLING AND DEMOLITION WORKS ARE TO BE CONDUCTED SUCH THAT IT IS READY TO RECEIVE NEW PROPOSED WORKS CAPTURED IN DESIGN DOCUMENTATION.
- ALL EXISTING STRUCTURAL MEMBERS SHALL BE ASSESSED BY THE PROJECT ARCHITECT, HERITAGE ARCHITECT AND STRUCTURAL ENGINEER AND DIRECTIONS CONFIRMED AFTER BEING REVEALED BY DEMOLITION WORKS.
- ALL EXISTING INTERNAL FENCING TO BE REMOVED, OTHER THAN THOSE SPECIFICALLY NOTED TO BE RETAINED.
- ALL EXISTING PAVEMENTS TO BE REMOVED.
- REMOVAL OF ALL EXISTING EXTERNAL EQUIPMENT INCLUDING AWNINGS, WATER TANKS, EXCLUDING THOSE SPECIFICALLY NOTED AS RETAINED.

c.f Figure 5.3

09	22/1/21	Contract Set Issue	09.1	Update	AWY
08	21/10/20	100% DD Documentation			AWY
07	8/10/20	DRAFT 100% DD Documentation Issue			AWY
06	29/9/20	Detailed Design Phase, 60% Documentation			AWY
05	22/9/20	Preliminary For Coordination			AWY
04	4/9/20	Preliminary For Review			AWY
03	12/6/20	Schematic Design Initiatives - ECI VM Phase Submission			AWY
02	5/6/20	Preliminary for Coordination			AWY
01	18/12/19	Preliminary Schematic Design			CTK
rev	date	name			by

fjmt studio architecture interiors landscape urban community
 sydney melbourne uk
 Level 5, 70 King Street • +61 2 9251 7077 • fjmtstudio.com

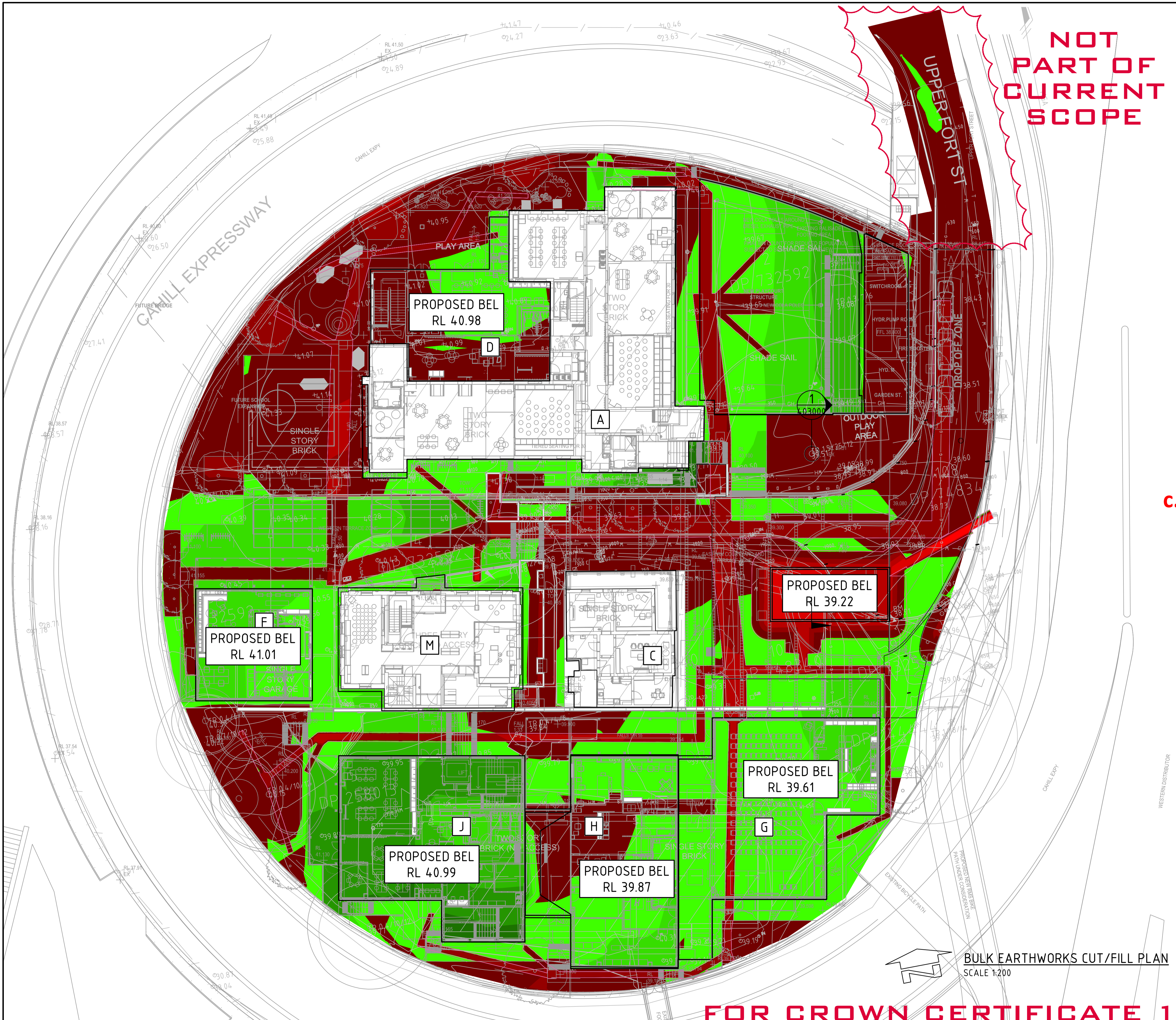
project
 Fort Street Public School
 Observatory Hill
 Sydney NSW 2000

title
Demolition Plans
Demolition Plan - Ground

scale 1:200 @ A1 first issued 18/12/19

project code sheet no. revision
FSS AR_DRG_110010 **09**

CONTRACT SET



SUMMARY NOTES

BULK EARTHWORKS VOLUMES:
SITE AREA = 0.6 Ha

CUT MATERIAL	= - 1190m ³
FILL MATERIAL	= + 1220m ³

DETAILED EXCAVATION ALLOWANCE FOR BUILDING FOUNDATION

EXCAV.	= - 90m ³
BALANCE	= - 60m ³ (POTENTIAL FOR SITE WON MATERIAL TO BE VALIDATED TO BE USED AS BACKFILL MATERIAL IN TRENCHES.)

NOTE:
EARTHWORK CUT/FILL QUANTITIES INCLUDE ALLOWANCE FOR EXCAVATION OF OSD TANK.

VOLUMES ARE BASED ON THE FOLLOWING ALLOWANCES FOR PAVEMENT / SLABS AND CAPPING REQUIREMENTS:

NEW BUILDINGS SLAB	= 140mm
NEW BUILDING REINFORCED CONCRETE SLAB	= 250mm
EXISTING BUILDING SLAB	= NIL
EXTERNAL PAVED AREAS	= 150mm
LANDSCAPE - MPB1	= 500mm
LANDSCAPE - MPB2, MPB4 & MPB6	= 1000mm
LANDSCAPE - MPB3	= 275mm
LANDSCAPE - MPB5	= 575mm

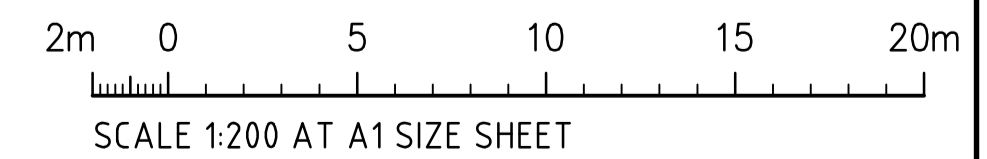
c.f Figure 5.4

DEPTH RANGE

No.	FROM DEPTH	TO DEPTH	COLOUR
1	-3.000	-2.750	■
2	-2.750	-2.500	■
3	-2.500	-2.250	■
4	-2.250	-2.000	■
5	-2.000	-1.750	■
6	-1.750	-1.500	■
7	-1.500	-1.250	■
8	-1.250	-1.000	■
9	-1.000	-0.750	■
10	-0.750	-0.500	■
11	-0.500	-0.250	■
12	-0.250	0.000	■
13	0.000	0.250	■
14	0.250	0.500	■
15	0.500	0.750	■
16	0.750	1.000	■
17	1.000	1.250	■
18	1.250	1.500	■
19	1.500	1.750	■

TREE 1 TPZ NOTE:
ALL EXCAVATION WITHIN THE TPZ OF TREE 1 IS TO BE CARRIED OUT UNDER THE DIRECTION AND SUPERVISION OF THE SITE ARBORIST (AQF LEVEL 5 QUALIFICATIONS).

BULK EARTHWORKS CUT/FILL PLAN
SCALE 1:200



FOR CROWN CERTIFICATE 1

REVISED FOR CC1 ISSUE	23.02.21	F
REVISED FOR D5 ISSUE	09.02.21	E
ISSUED FOR TENDER	27.01.21	D
FINAL 100% DETAILED DESIGN ISSUE	21.10.20	C
CIVIL 100% DETAILED DESIGN ISSUE	14.10.20	B
ISSUED FOR INFORMATION	06.10.20	A
AMENDMENTS	DATE	ISSUE

ARCHITECT

CLIENT

PROJECT

FORT STREET PUBLIC SCHOOL
OBSERVATORY HILL
SYDNEY, NSW, 2000

Costin Roe Consulting Pty Ltd.
Consulting Engineers
Level 1, 8 Windmill Street
Wahib Bay, Sydney NSW 2000
Tel: (02) 9251-7699 Fax: (02) 9241-3731
email: mail@costinroe.com.au @

Costin Roe Consulting

PRECISION | COMMUNICATION | ACCOUNTABILITY

DRAWING TITLE

BULK EARTHWORKS CUT/FILL PLAN

DRAWING No. **FS-CV-DRG-103000** ISSUE **F**

GENERAL NOTES

- ALL DIMENSIONS AND EXISTING CONDITIONS SHALL BE CHECKED AND VERIFIED BY THE CONTRACTOR BEFORE PROCEEDING WITH THE WORK.
- ALL LEVELS RELATIVE TO AUSTRALIAN HEIGHT DATUM.
- DO NOT SCALE DRAWINGS.
- USE FIGURED DIMENSIONS ONLY.

Legend

- SITE BOUNDARY
- 1.5m SITE BOUNDARY SETBACK

TOILET CODES

- S Student
- T Teacher
- A Accessible
- B Ambulant
- M Male
- F Female
- WC Toilet/Cubicle

BUILDING ID

- A BUILDING ID
- FUTURE SCOPE
- COLD SHELL TYPE 1
- COLD SHELL TYPE 2

NOTE: FOR COLD SHELL INCLUSIONS AND EXCLUSIONS REFER TO COLD SHELL PLANS - AR_DRG_250000 SERIES



c.f Figure 5.5

24	22/1/21	Contract Set Issue	AWY	DB
23	18/12/20	Draft for Tender Coordination	AWY	DB
22	21/10/20	100% DD Documentation	AWY	DB
21	16/10/20	DD Issue for Coordination	AWY	DB
20	8/10/20	DRAFT 100% DD Documentation Issue	AWY	DB
19	29/9/20	Detailed Design Phase, 60% Documentation	AWY	DB
18	22/8/20	Preliminary For Coordination	AWY	DB
17	4/9/20	Preliminary For Review	AWY	DB
16	14/8/20	Preliminary For Review	AWY	DB
15	12/6/20	Schematic Design Initiatives - ECI VM Phase Submission	AWY	DB
14	5/6/20	Preliminary for Coordination	AWY	DB
13	29/5/20	Preliminary for Review	AWY	DB
12	22/5/20	Preliminary for Coordination	AWY	DB
11	11/5/20	Preliminary	AWY	DB
10	5/3/20	For Coordination - Preliminary VM Option	CTK	DB
09	3/3/20	For Coordination - Preliminary VM Option	AWY	DB
08	2/2/20	For Coordination	AWY	DB
07	20/1/20	Schematic Design	AWY	
06	18/12/19	Preliminary Schematic Design	CTK	
rev	date	name		by

fjmt studio architecture interiors landscape urban community
 sydney melbourne uk
 Level 5, 70 King Street +61 2 9251 7077 www.fjmtstudio.com

project
 Fort Street Public School
 Observatory Hill
 Sydney NSW 2000

title
**Overall General Arrangement Plan
 Lower Ground**

scale 1:200 @ A1 first issued 1/11/19
 project code sheet no. revision
FSS AR_DRG_100000 24

CONTRACT SET

GENERAL NOTES
 ALL DIMENSIONS AND EXISTING CONDITIONS SHALL BE CHECKED AND VERIFIED BY THE CONTRACTOR BEFORE PROCEEDING WITH THE WORK.
 ALL LEVELS RELATIVE TO AUSTRALIAN HEIGHT DATUM.
 DO NOT SCALE DRAWINGS.
 USE FIGURED DIMENSIONS ONLY.

legend **A** BUILDING ID

TOILET CODES
 S Student Toilet
 T Teacher Toilet
 A Accessible Toilet
 B Ambulant Toilet
 M Male Toilet/Cubicle
 F Female Toilet/Cubicle
 WC Toilet/Cubicle



c.f Figure 5.6

rev	date	name	by	chk
24	22/1/21	Contract Set Issue	AWY	DB
23	18/12/20	Draft for Tender Coordination	CTK	DB
22	21/10/20	100% DD Documentation	AWY	DB
21	16/10/20	DD Issue for Coordination	AWY	DB
20	8/10/20	DRAFT 100% DD Documentation Issue	AWY	DB
19	29/9/20	Detailed Design Phase 60% Documentation	AWY	DB
18	22/9/20	Preliminary For Coordination	AWY	DB
17	4/9/20	Preliminary For Review	AWY	DB
16	14/8/20	Preliminary For Review	AWY	DB
15	12/6/20	Schematic Design Initiatives - ECI VM Phase Submission	AWY	DB
14	5/6/20	Preliminary for Coordination	AWY	DB
13	29/5/20	Preliminary for Review	AWY	DB
12	22/5/20	Preliminary for Coordination	AWY	DB
11	11/5/20	Preliminary	AWY	DB
10	5/3/20	For Coordination - Preliminary VM Option	CTK	DB
09	3/3/20	For Coordination - Preliminary VM Option	AWY	DB
08	2/2/20	For Coordination	AWY	DB
07	20/1/20	Schematic Design	AWY	DB
06	17/1/20	Preliminary Schematic Design	AWY	DB

fjmt studio architecture interiors landscape urban community
 sydney melbourne uk
 Level 5, 70 King Street +61 2 9251 7077 • fjmtstudio.com

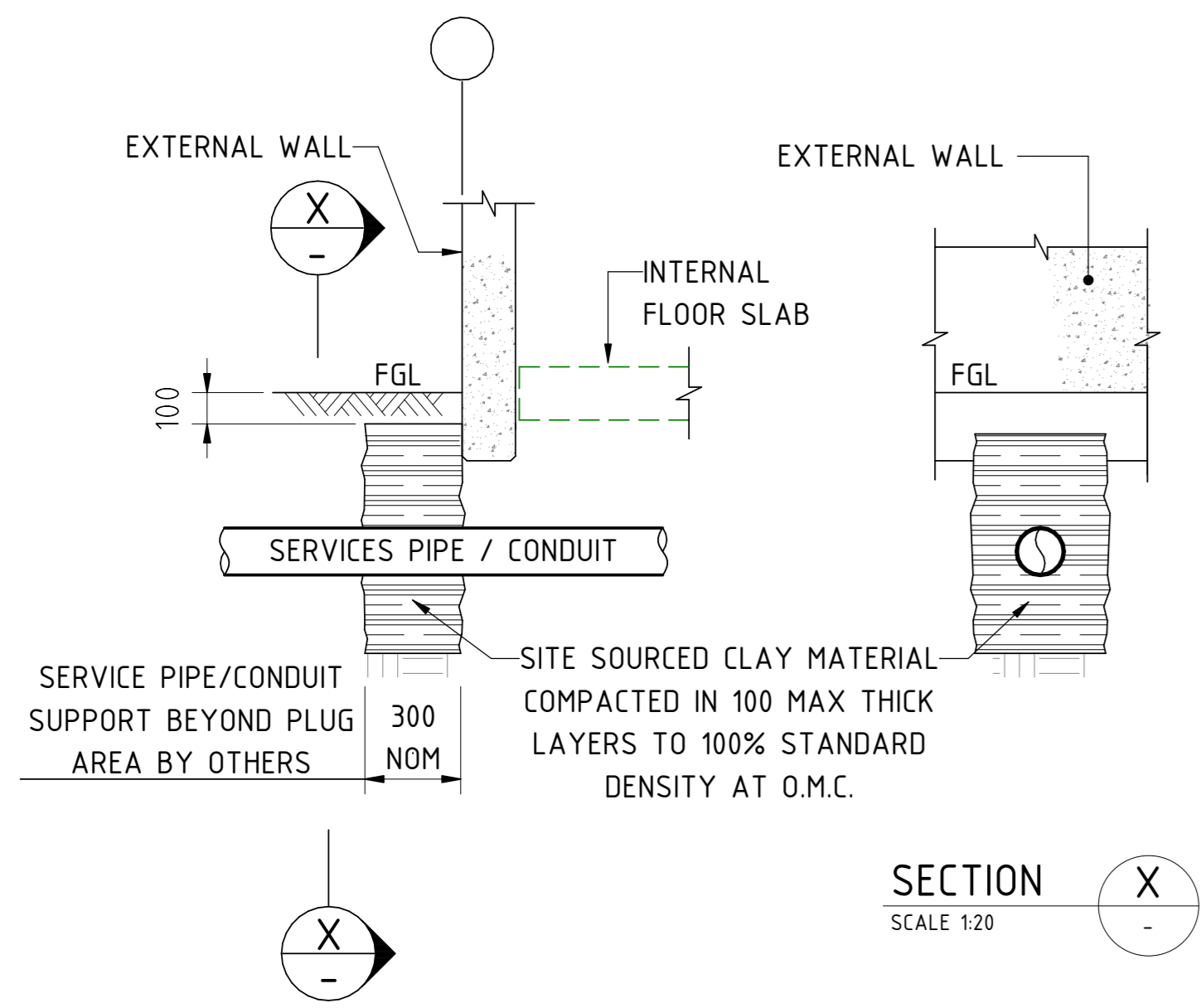
project
 Fort Street Public School
 Observatory Hill
 Sydney NSW 2000

title
**General Arrangement Plan
 Lower Ground South**

scale 1:100 @ A1 first issued 1/11/19

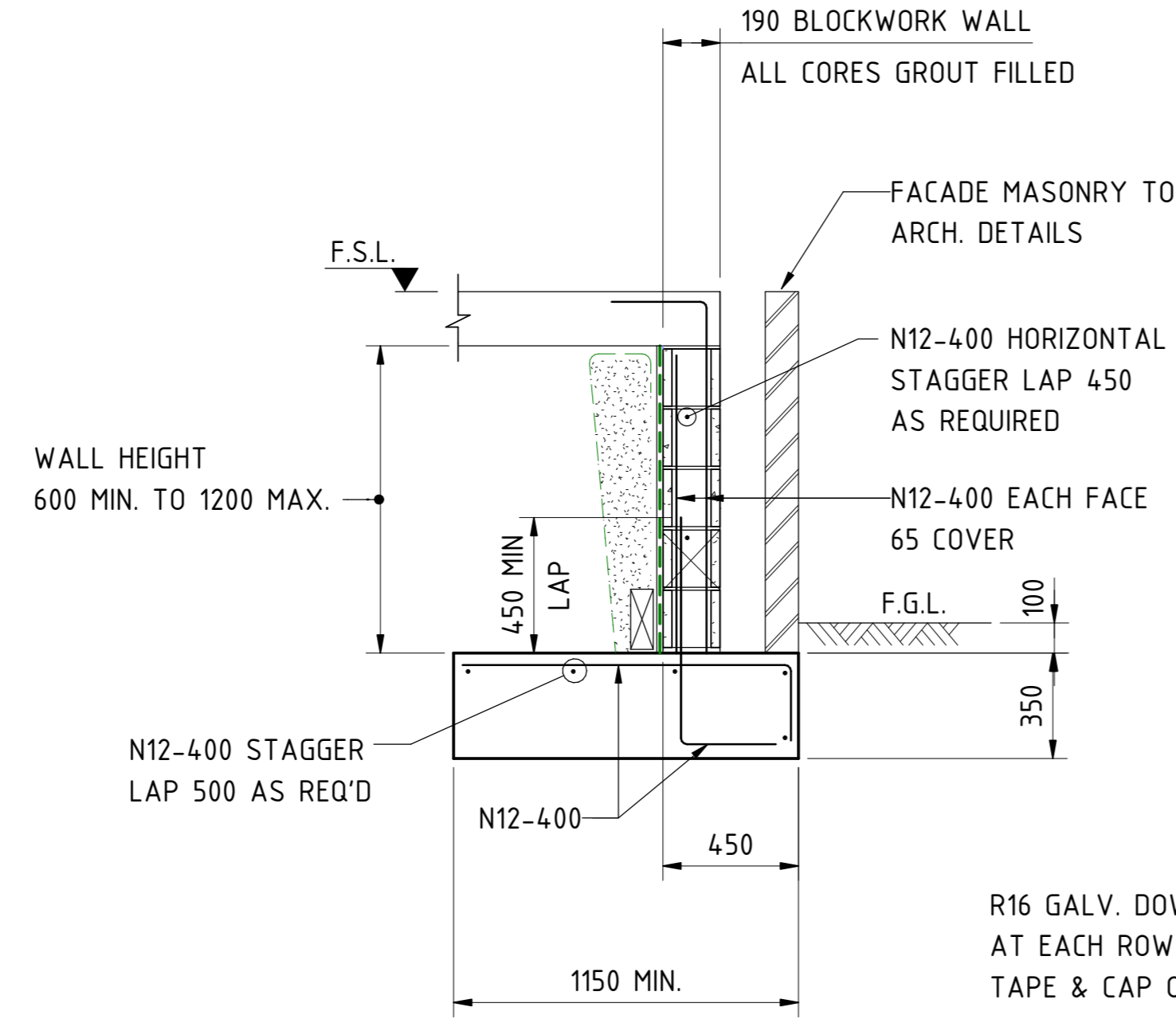
project code sheet no. revision
FSS AR_DRG_200200 24

CONTRACT SET



TYPICAL CLAY SERVICE PLUG DETAIL
SCALE 1:20

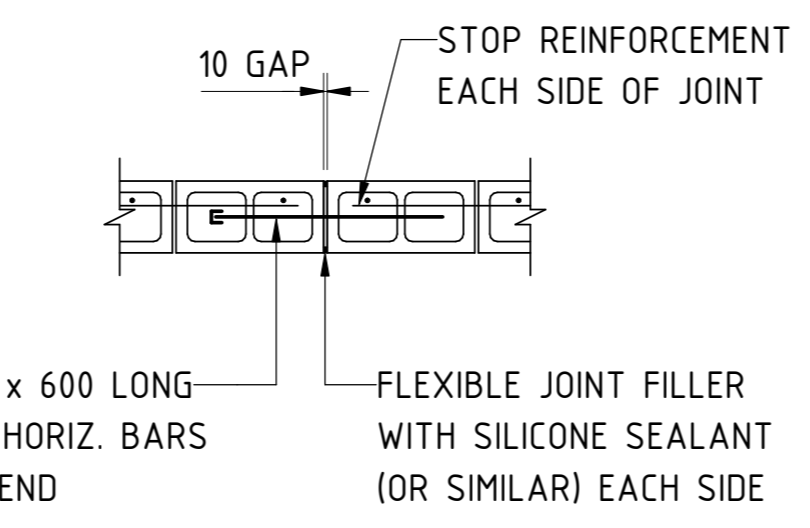
ALL SERVICE TRENCHES ENTERING BUILDING TO INCORPORATE CLAY PLUG TO PREVENT WATER INGRESS INTO THE BUILDING



RW1 - RETAINING WALL
SCALE 1:20

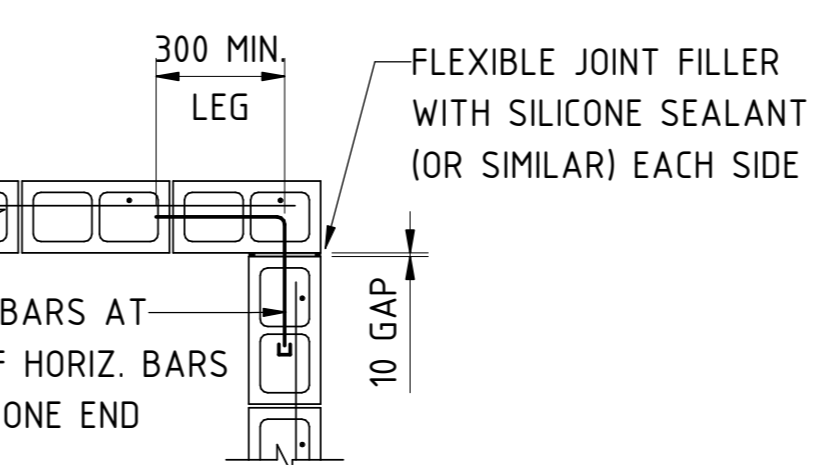
NOTE:
ALL BLOCK CORES TO BE FULLY GROUTED.
NOTES SHOWN ARE TYPICAL FOR ALL WALLS.
ALL BASE KEYS TO BE POURED AGAINST UNDISTURBED NATURAL GROUND

CONCRETE QUALITY					
ELEMENT	SLUMP	AGGREGATE (MAX SIZE)	CEMENT TYPE	ADMIXTURE	F _c (MPa)
CORE FILL	230	10	GP	NIL	20

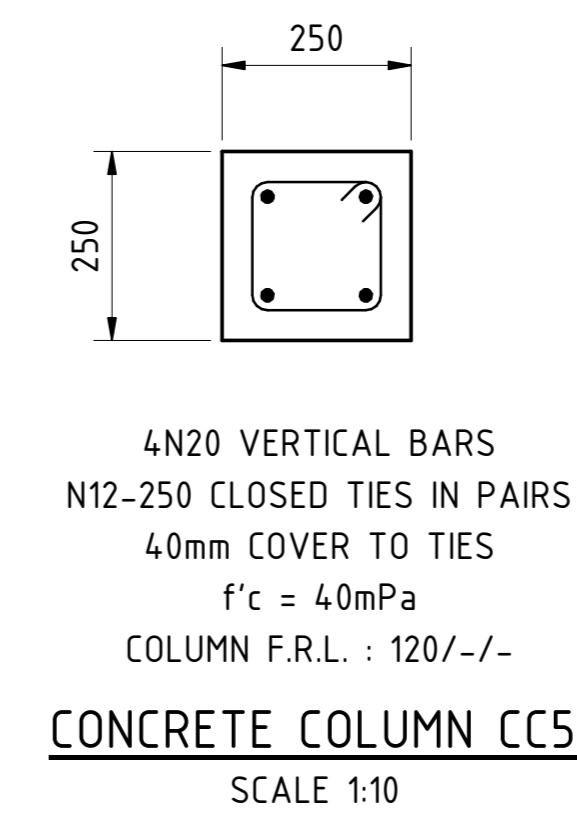


VERTICAL JOINT DETAIL
PROVIDE VERTICAL JOINTS IN BLOCKWORK 8.0m MAX CENTRES

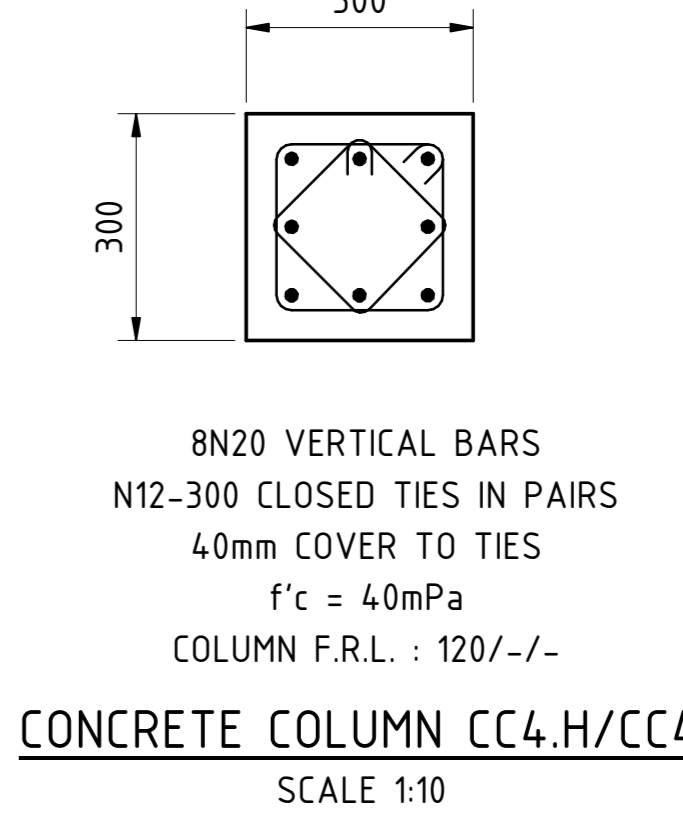
RETAINING WALL BLOCKWORK JOINTING DETAILS
SCALE 1:20



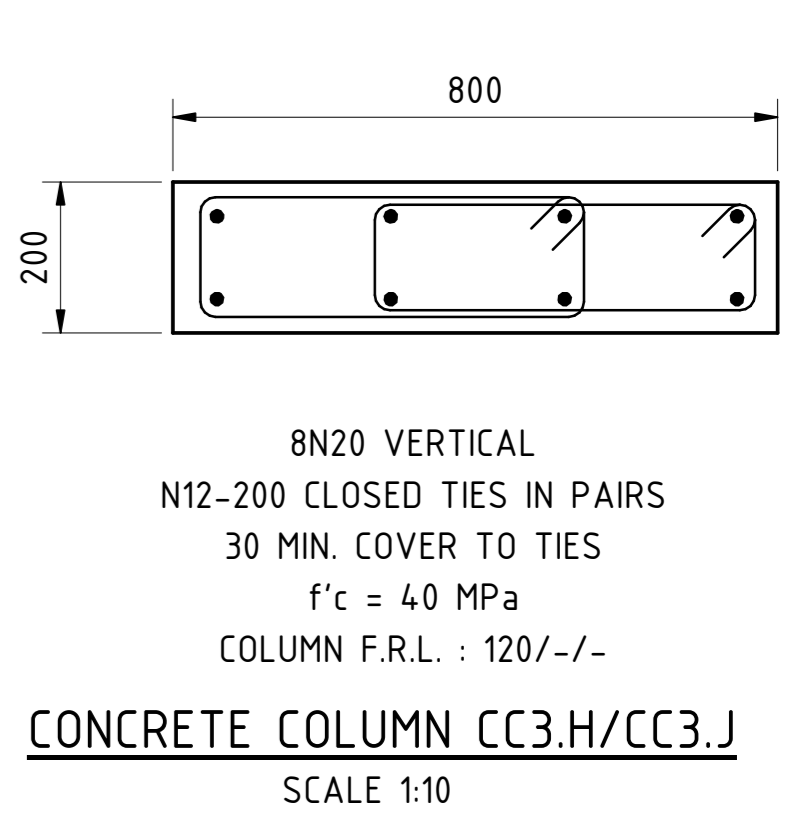
CORNER DETAIL



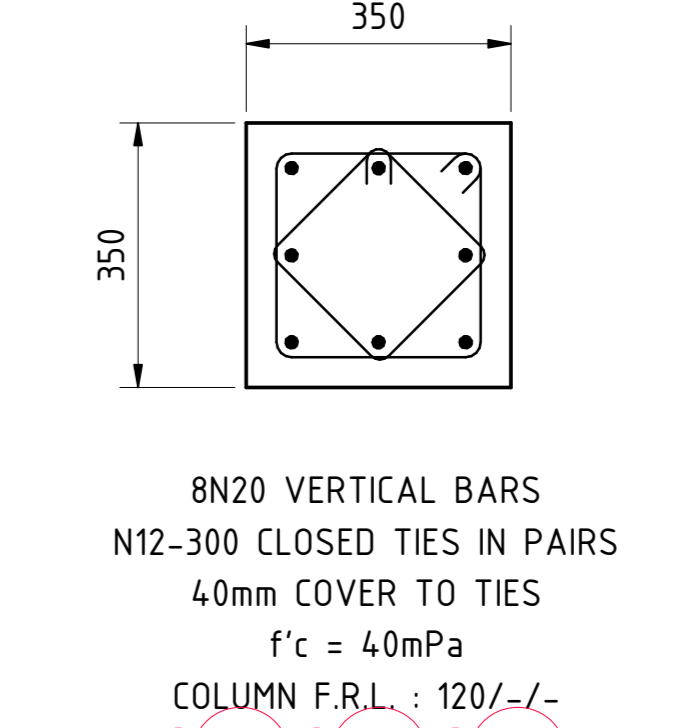
CONCRETE COLUMN CC5.J
SCALE 1:10



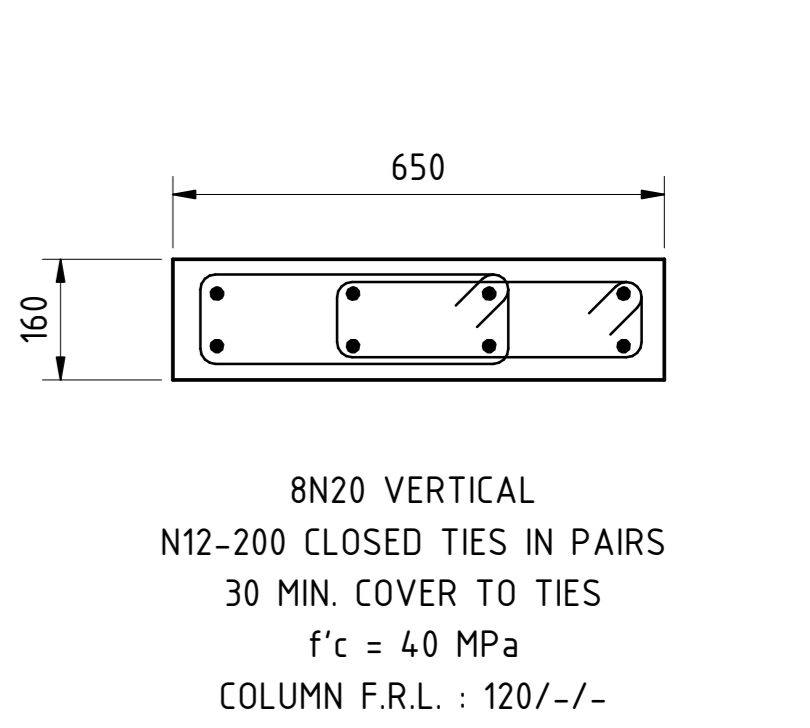
CONCRETE COLUMN CC4.H/CC4.J
SCALE 1:10



CONCRETE COLUMN CC3.H/CC3.J
SCALE 1:10



CONCRETE COLUMN CC1.H/CC1.J
SCALE 1:10

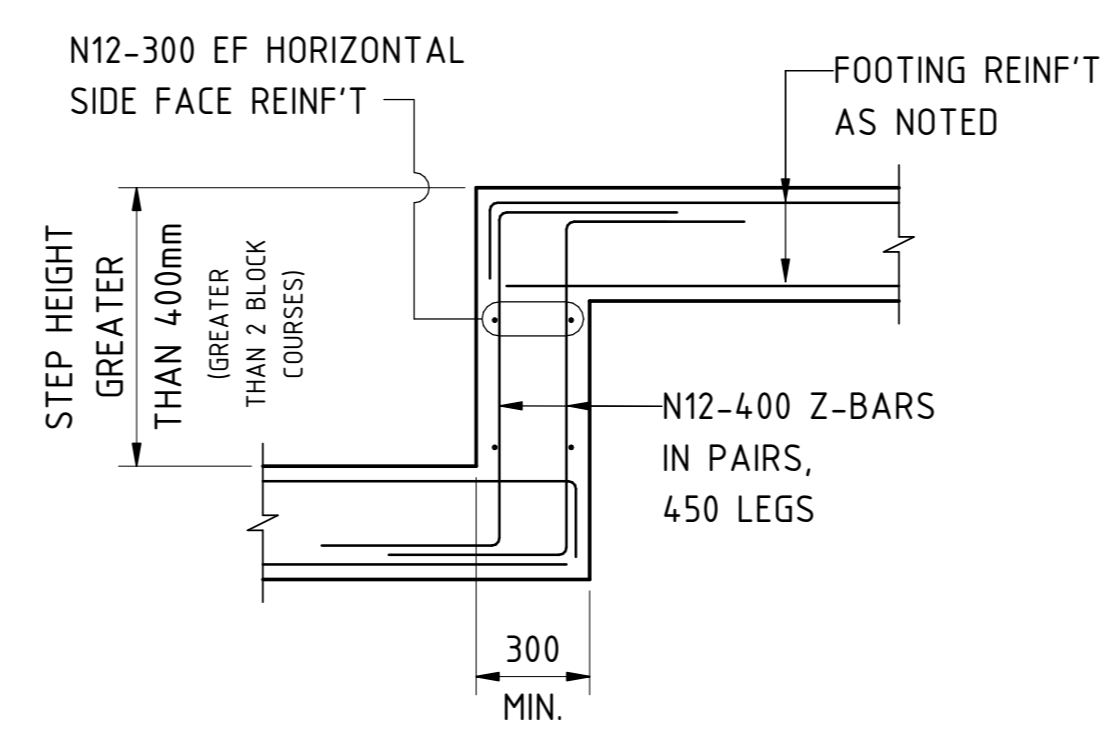


CONCRETE COLUMN CC2.H/CC2.J
SCALE 1:10

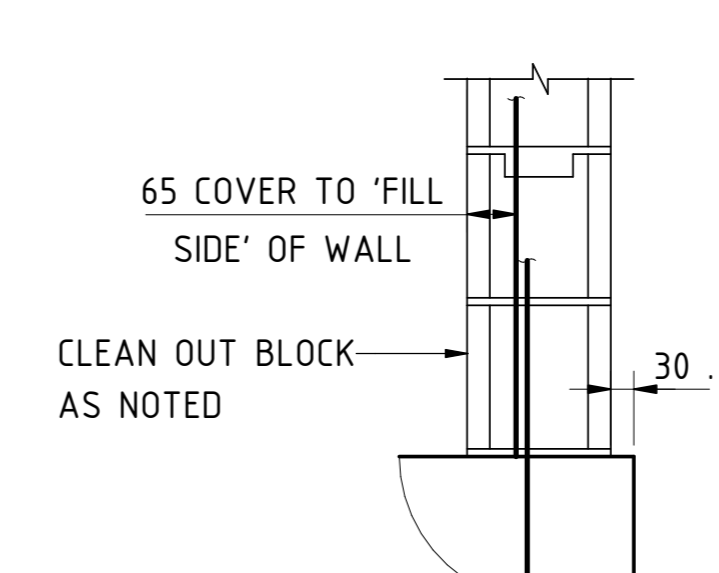
UNLESS DENOTED CC1H 8N24 VERTICAL BARS REFER S220

CONCRETE QUALITY					
ELEMENT	SLUMP	AGGREGATE (MAX SIZE)	CEMENT TYPE	ADMIXTURE	F _c (MPa)
CONCRETE COLUMN	80	20	GP	NIL	40

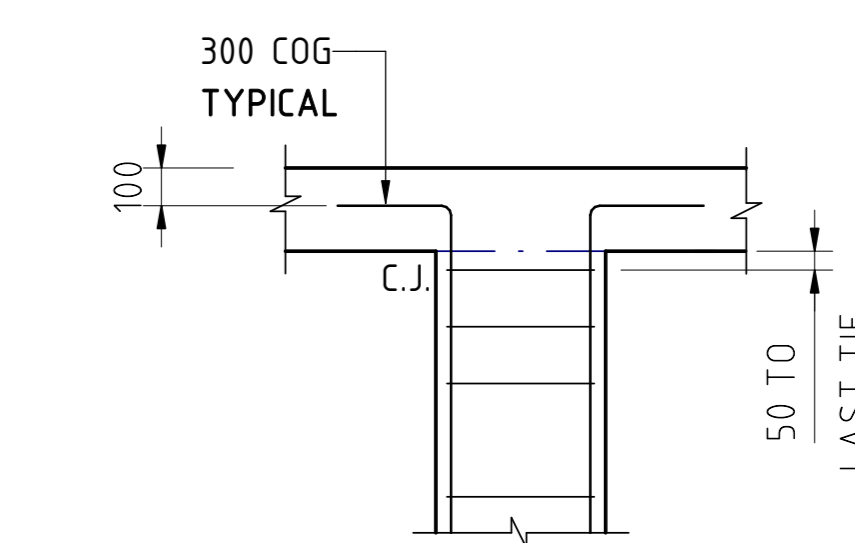
NOMINAL 56 DAY SHRINKAGE 650 MICROSTRAIN



TYPICAL RETAINING WALL FOOTING STEPS
SCALE 1:20



TYPICAL WALL VERTICAL REINFORCEMENT DETAIL
NOT TO SCALE

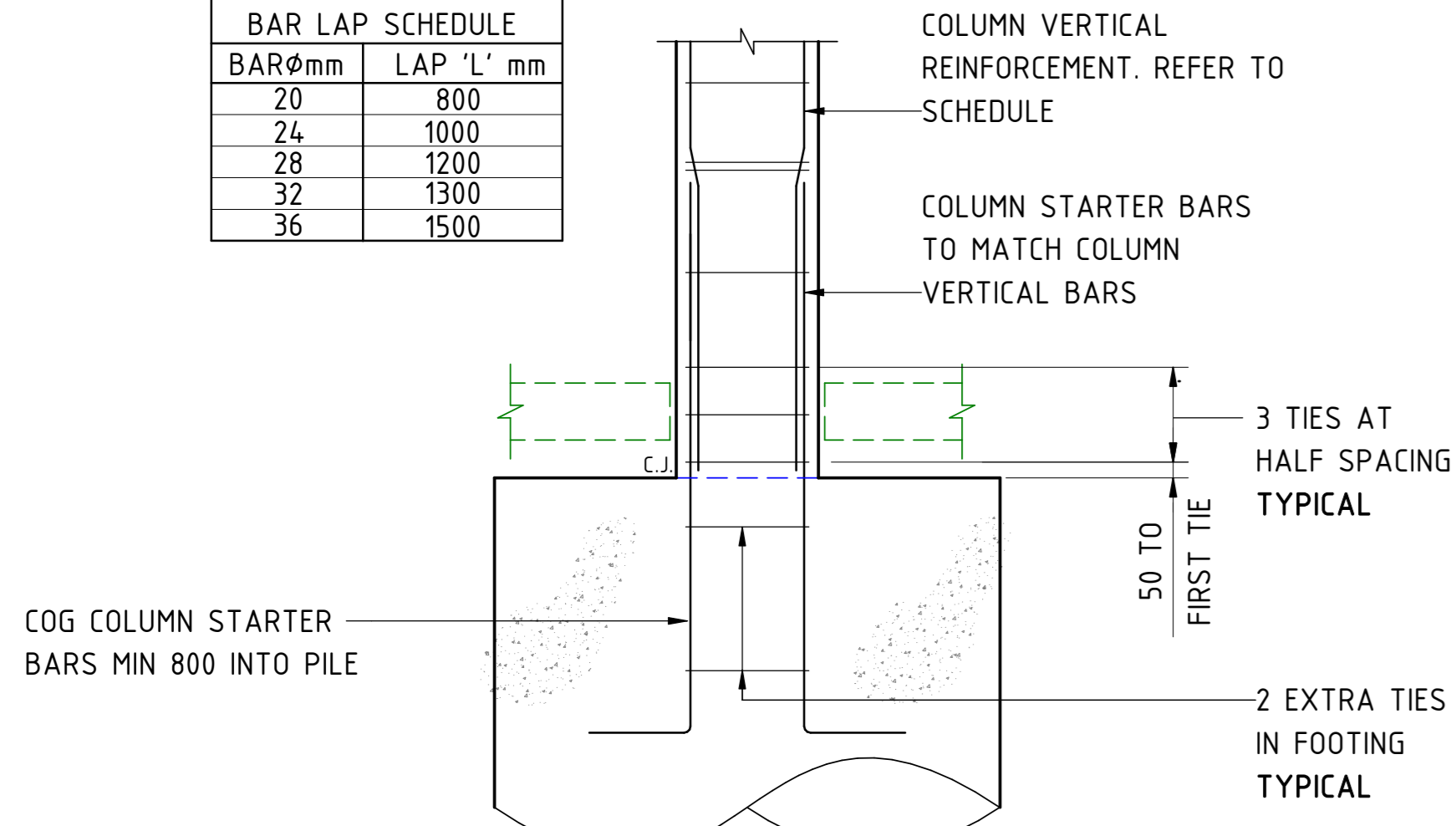


COLUMN TERMINATION

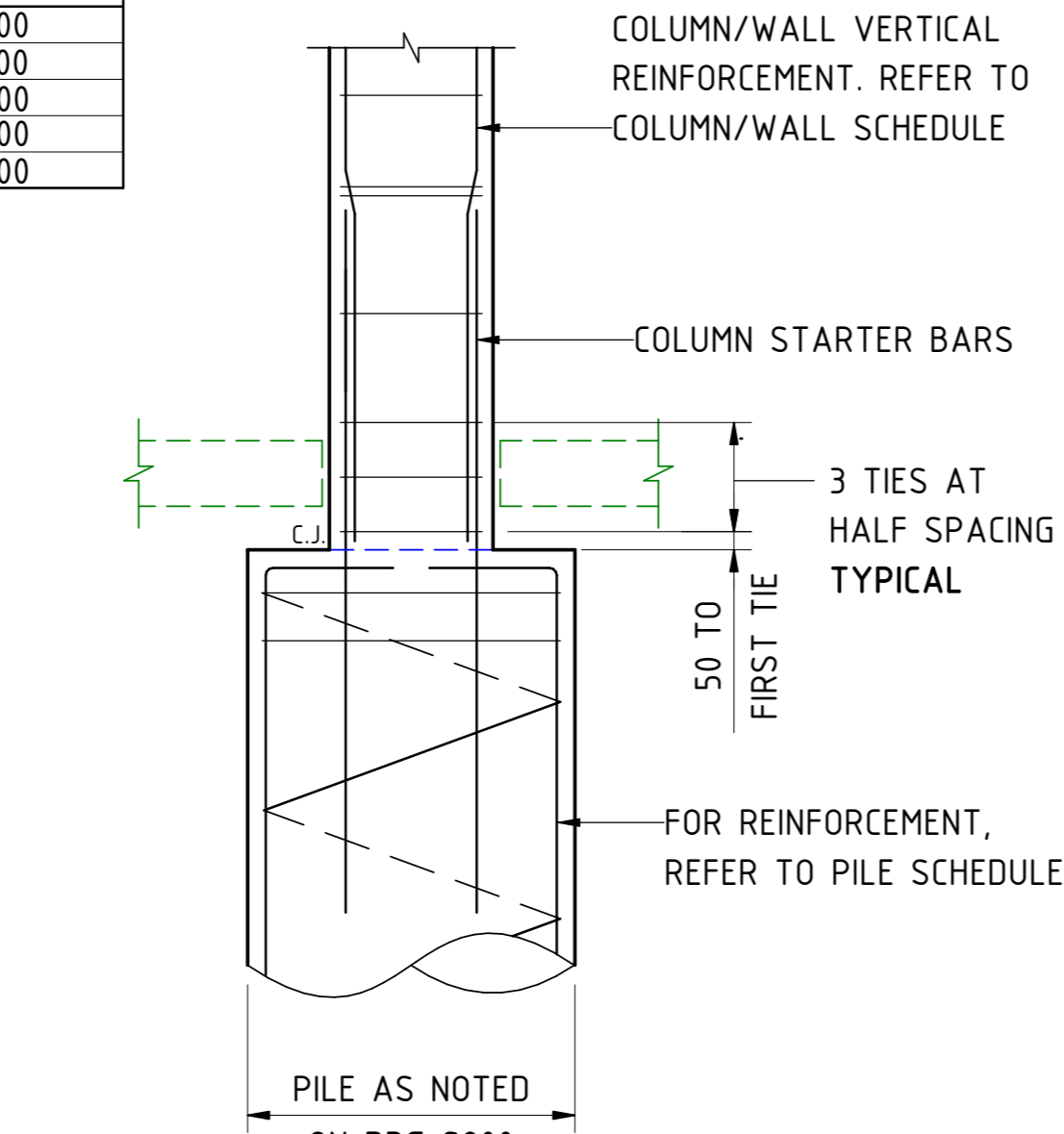
c.f Figure 5.7

COLUMN VERTICAL BAR LAP SCHEDULE	
BAR Ømm	LAP 'L' mm
20	800
24	1000
28	1200
32	1300
36	1500

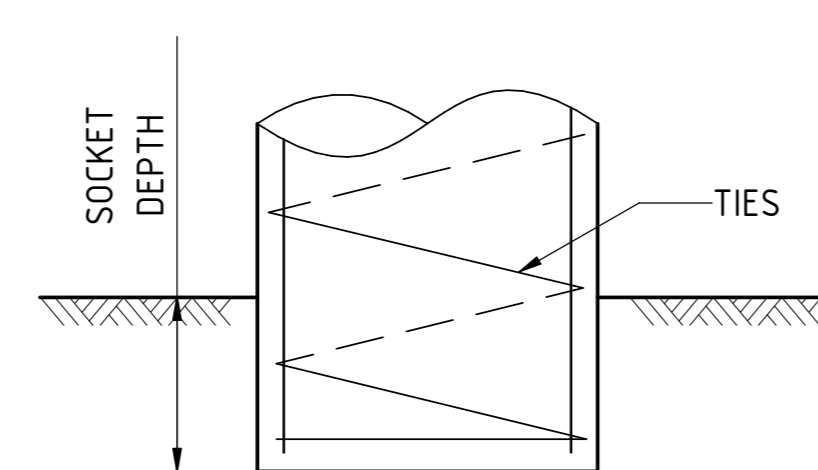
COLUMN VERTICAL BAR LAP SCHEDULE	
BAR Ømm	LAP 'L' mm
20	800
24	1000
28	1200
32	1300
36	1500



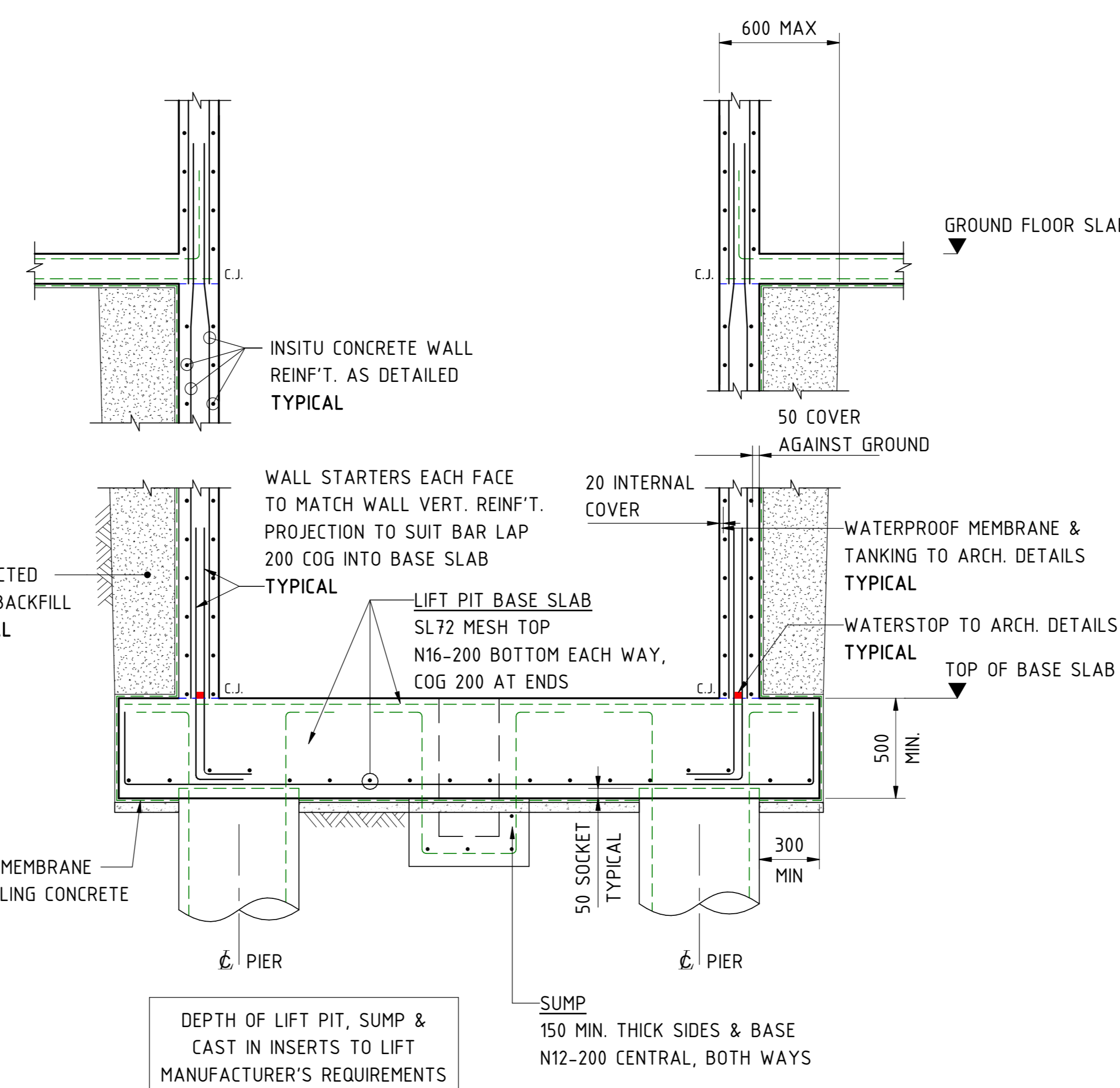
TYPICAL MASS CONCRETE PILE FOOTING DETAIL
SCALE 1:20



TYPICAL PILE FOOTING DETAIL
SCALE 1:20

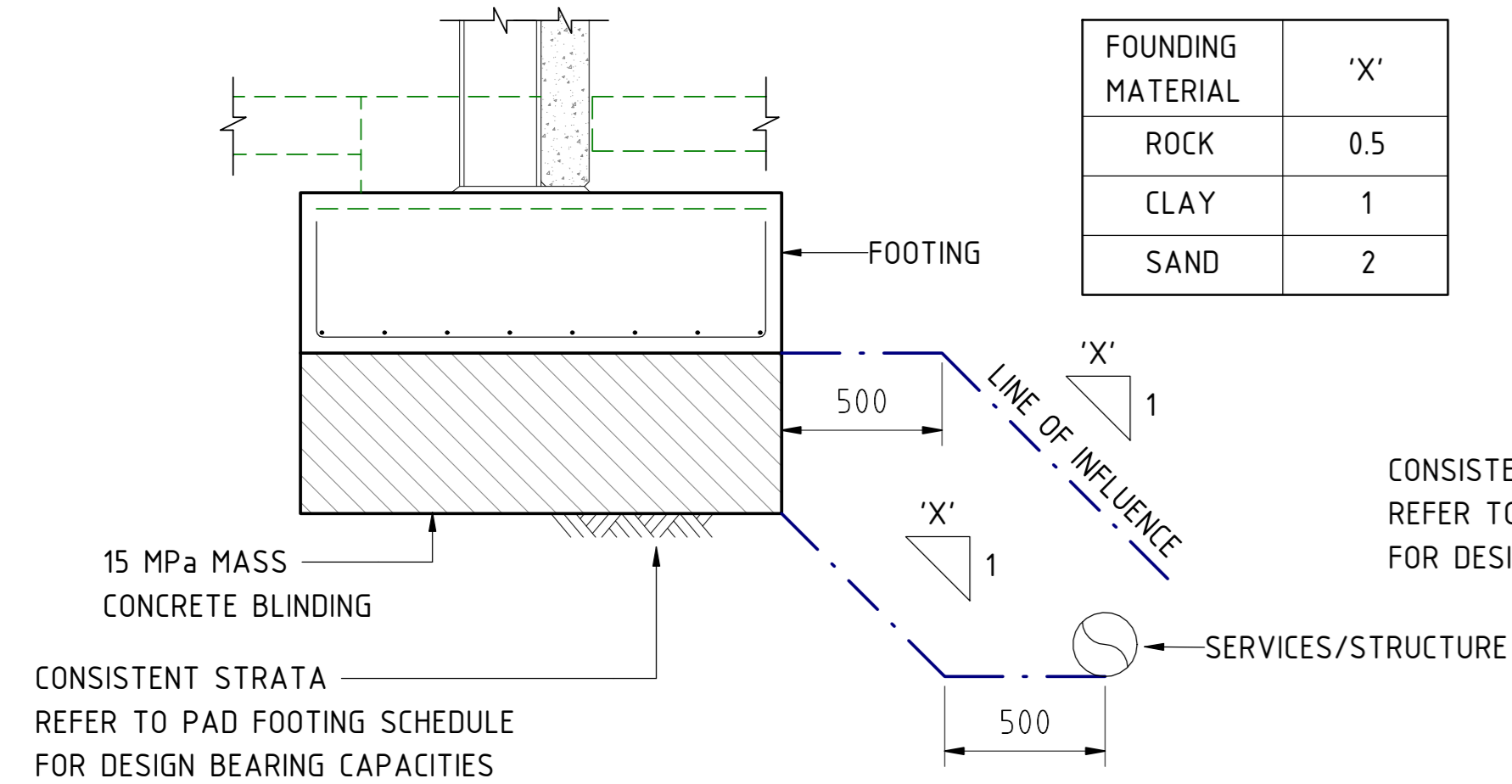


TYPICAL PILE DETAILS
SCALE 1:20



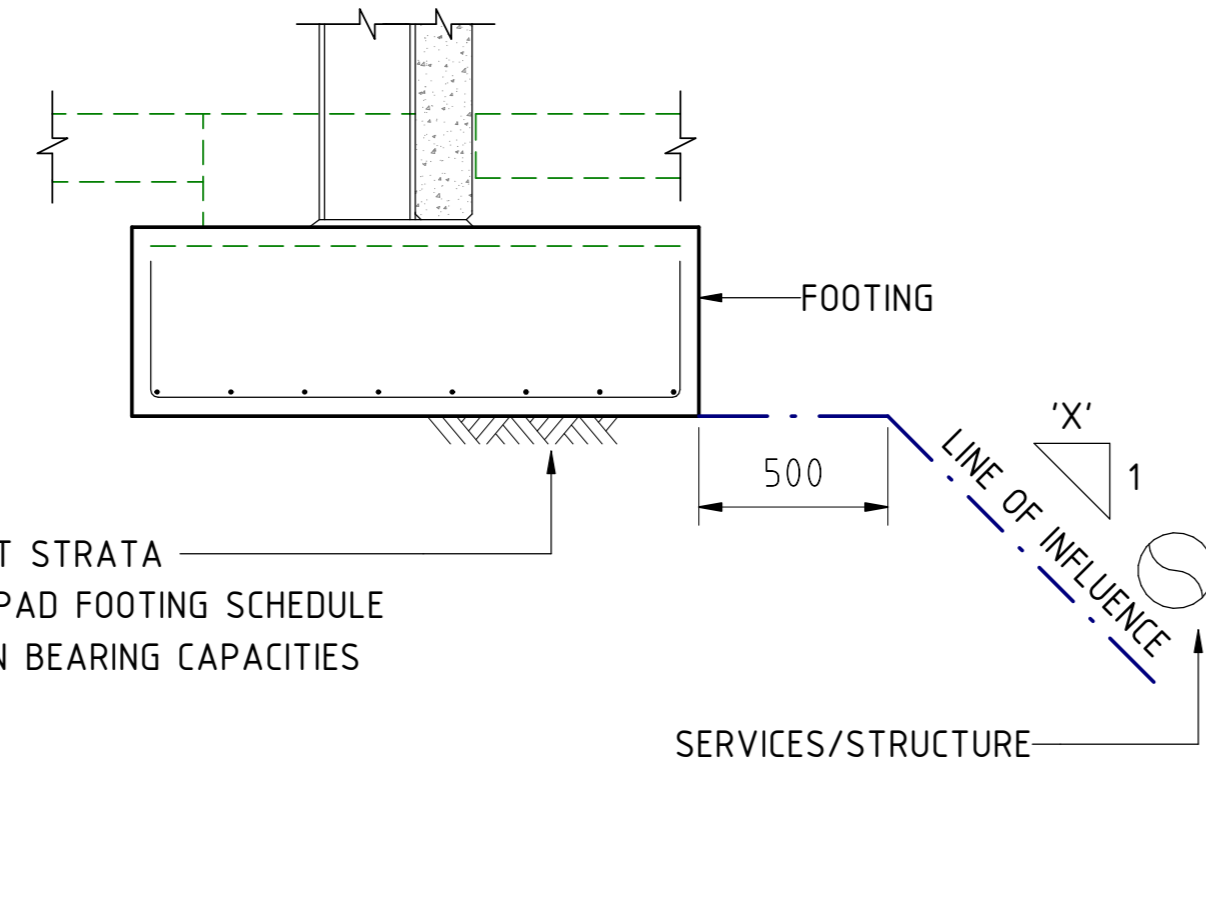
TYPICAL SECTION THRU' LIFT PIT
SCALE 1:20

FOUNDING MATERIAL	'X'
ROCK	0.5
CLAY	1
SAND	2

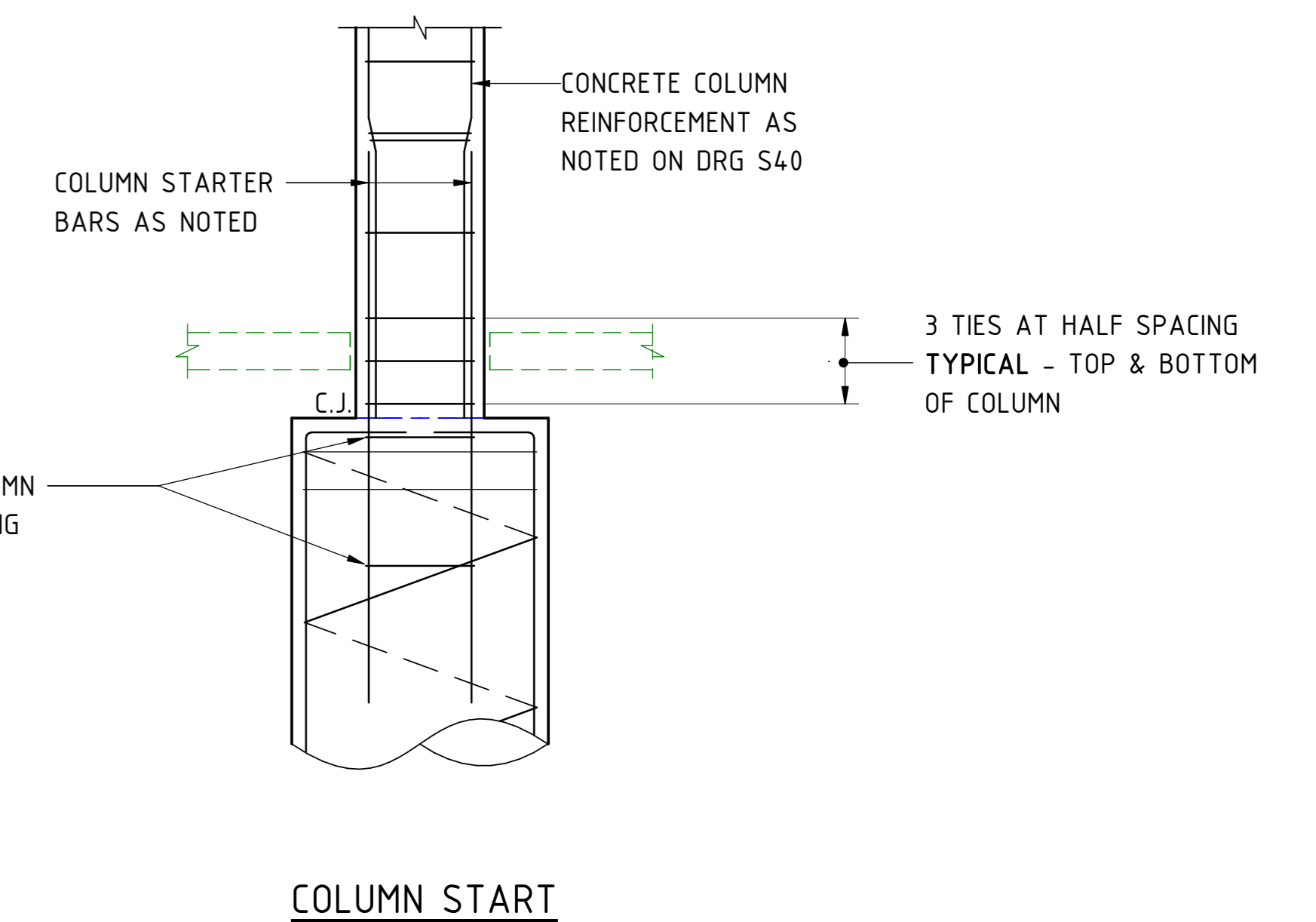


SERVICE/STRUCTURE INSIDE ZONE OF INFLUENCE OF FOOTING

TYPICAL FOOTING DETAIL NEAR SERVICES
SCALE 1:20

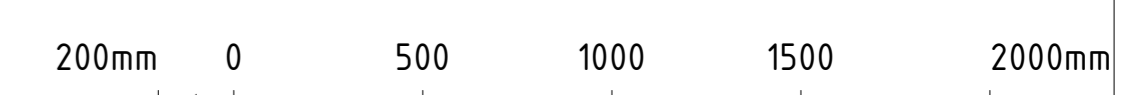


SERVICE/STRUCTURE OUTSIDE ZONE OF INFLUENCE OF FOOTING



TYPICAL COLUMN START ELEVATION AT PILE
SCALE 1:20

COLUMN START



SCALE 1:20 AT A0 SIZE SHEET

FOR TENDER

Costin Roe Consulting

PRECISION ACCOUNTABILITY

ISSUED FOR TENDER, REVISION AS CLOUDED	DATE	ISSUE
ISSUED FOR 100% DETAILED DESIGN	14.10.20	E
ISSUED FOR 60% DETAILED DESIGN	01.10.20	D
ISSUED FOR INFORMATION	14.09.20	C
COLUMN DETAIL ADDED	12.06.20	B
ISSUED FOR INFORMATION	29.05.20	A

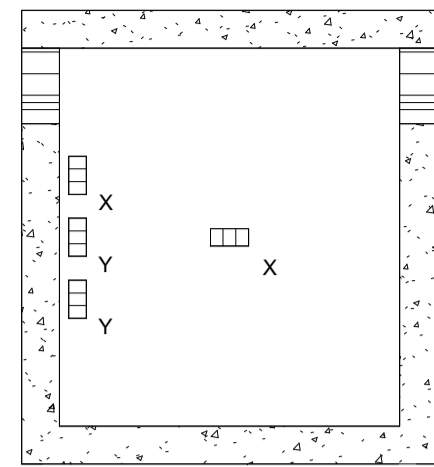
AMENDMENTS	DATE	ISSUE
210121	F	



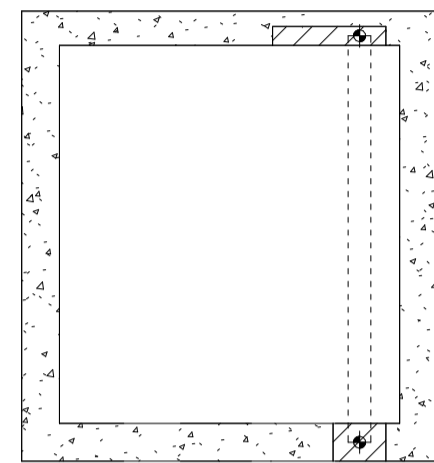
PROJECT: FORT STREET PUBLIC SCHOOL OBSERVATORY HILL SYDNEY N.S.W. 2000
DESIGNED: A.M.C.D. DRAWN: D.W. DATE: MAY 2020 SIZE: A0 SCALE: AS NOTED CAP REF: C014100.00 - S201

Costin Roe Consulting Pty Ltd. Consulting Engineers Level 1, 8 Windmill Street Walsh Bay, Sydney NSW 2000 Tel: (02) 9251-7699 Fax: (02) 9241-3731 email: mail@costinroe.com.au

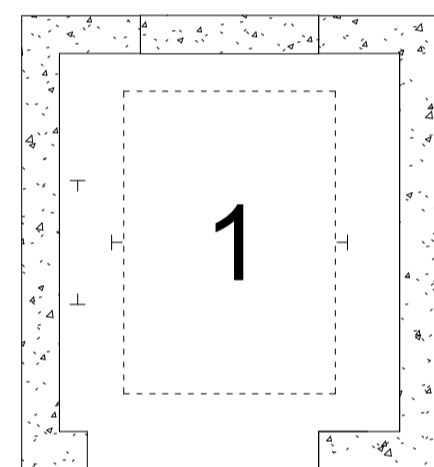
DRAWING TITLE	ISSUE
FS- ST- DRG- 6- 00- 6- 00	
BUILDING J & H - FOOTING DETAILS	
COSTIN ROE REFERENCE No	C014100.00 - S 201



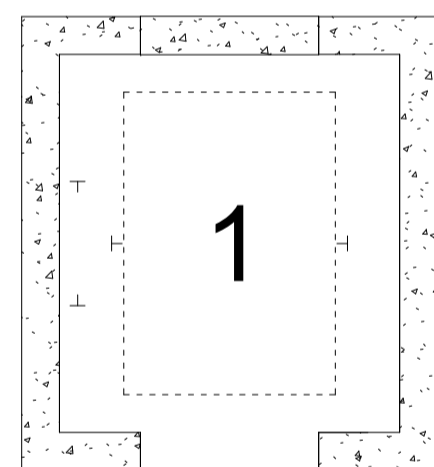
CEILING PLAN
Scale 1:50



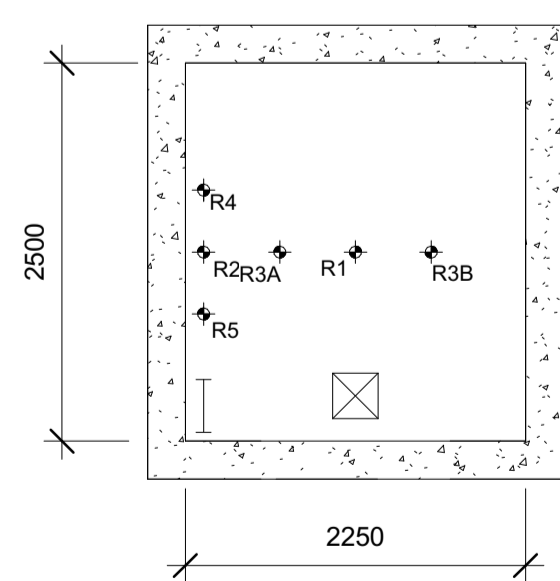
HEAD ROOM PLAN
Scale 1:50



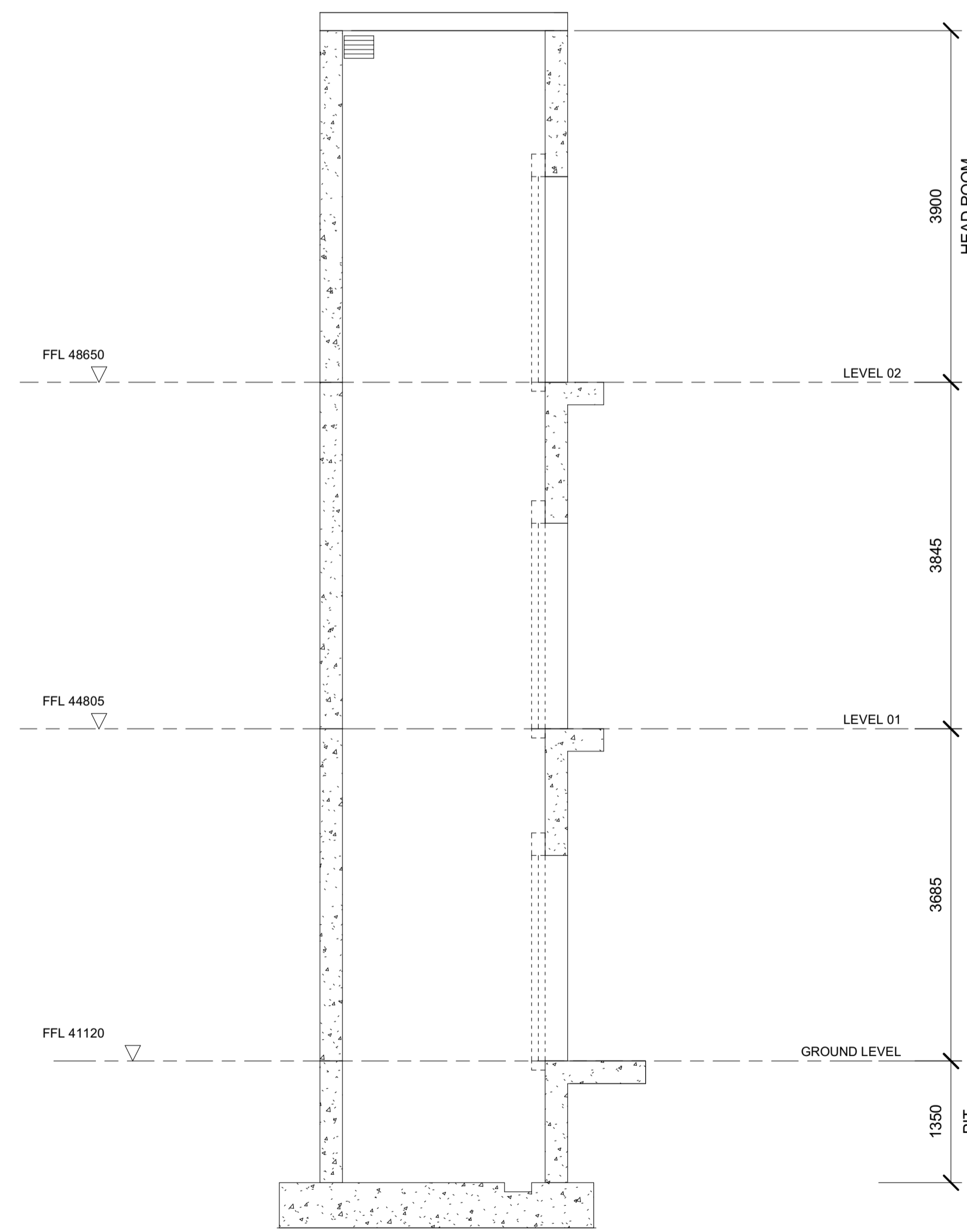
LEVEL 02 - FLOOR PLAN
Scale 1:50



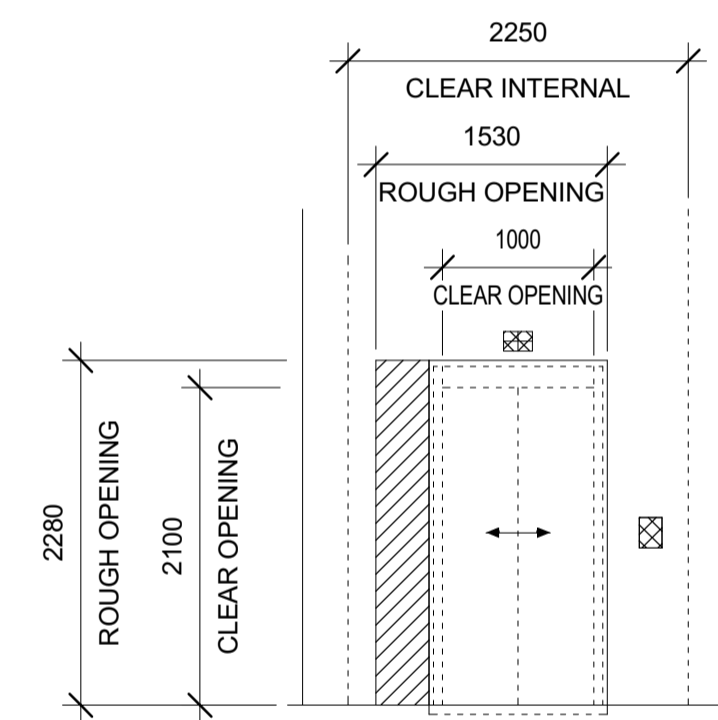
TYPICAL LEVEL - FLOOR PLAN
Scale 1:50



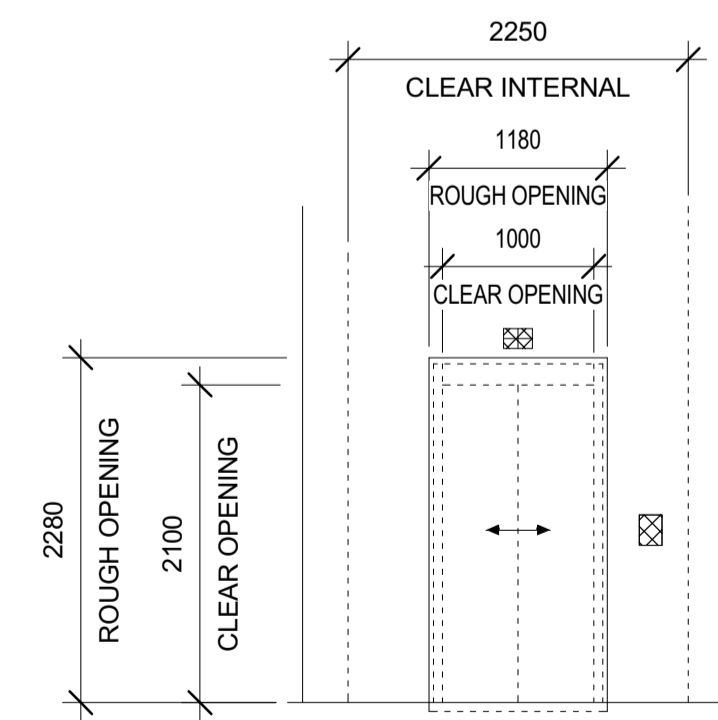
PIT PLAN
Scale 1:50



LIFT WELL SECTION
Scale 1:50



LEVEL 02 - DOOR ELEVATION
Scale 1:50



TYPICAL LEVEL - DOOR ELEVATION
Scale 1:50

LEGEND

SYMBOL	DESCRIPTION
---	HOIST MACHINE BEAM BY LIFT TRADE
---	PIT ACCESS LADDER BY LIFT TRADE
☒	DRY SUMP 300Wx300Hx300D
+	LIFTWELL RAIL
⊕	REACTION FORCE LOCATION
▨	BLOCK OUT
▧	FULL DEPTH OPENING
□	LIFTING EYE BY LIFT TRADE
▨	FIRE RATED LIFT WELL VENTILATION OPENING SIZE FOR 450 x 450mm CLEAR OPEN AREA, BY MECH TRADE

HEADROOM BEAM REACTIONS (kN)	
H1 = 40	H2 = 50
LIFTING EYES (SWL)	
X = 4000kg	Y = 2500kg

PIT REACTIONS (kN) INCLUDES ALLOWANCE FOR IMPACT		
CAR/CWT BUFFER	R1 = 145	R2 = 120
CAR RAIL	R3A = 120	R3B = 120
CWT RAIL	R4 = 145	R5 = 145

GUIDE RAIL FORCES (kN)		
CAR	Fx = 5.5	Fy = 3
CWT	Fx = 4.5	Fy = 2.5

DESCRIPTION OF LIFTS	
LIFT Nos	1
CLASS	A
RATED CAPACITY	17P/1275kg
DRIVE	GEARLESS ELECTRIC TRACTION
SPEED	1.0 mps
CLEAR CAR SIZE	1400W x 2000D x 2200H
DOORS	1000W x 2100H 2PCO

NOTES

- THIS DRAWING SHOWS TYPICAL BUILDERS WORK DETAILS FOR A GENERIC MRL TRACTION LIFT AND IS NOT INTENDED TO SHOW ALL DETAILS AND DIMENSIONS FOR EACH MANUFACTURER'S SPECIFIC LIFT REQUIREMENTS.
- ALL DIMENSIONS ARE TYPICAL ONLY AND WILL REQUIRE REVISION TO SUIT THE LIFT SUB CONTRACTORS SPECIFIC LIFT REQUIREMENTS.
- ALL BLOCKOUTS, OPENINGS AND CHASES ARE TYPICAL ONLY AND WILL REQUIRE REVISION TO SUIT THE LIFT SUB CONTRACTORS SPECIFIC LIFT REQUIREMENTS.
- ALL REACTIONS ARE TYPICAL ONLY AND WILL REQUIRE REVISION TO SUIT THE LIFT SUB CONTRACTORS SPECIFIC LIFT REQUIREMENTS.
- INSERT LOCATIONS FOR LANDING DOORS, LIFT AND COUNTER WEIGHT RAILS ETC. ARE NOT SHOWN. THE LIFT SUB CONTRACTOR SHALL PROVIDE ALL INSERTS TO THE BUILDER FOR INSTALLATION BY THE BUILDER.
- THE LIFT SUB CONTRACTOR SHALL CONFIRM ALL FLOOR LEVELS AND OPENINGS ON THE LATEST REVISION OF THE ARCHITECTURAL DRAWINGS PRIOR TO ORDERING LIFT EQUIPMENT.
- THE LIFT SUB CONTRACTOR SHALL PROVIDE ALL BUILDING WORK DETAILS, INCLUDING REACTIONS, OPENINGS, CHASES, BLOCK OUT DIMENSIONS AND ASSOCIATED LOCATIONS ETC. WITH SUFFICIENT TIME FOR REVIEW AND CHANGES IF REQUIRED AND TO AVOID DELAYS TO THE BUILDING CONSTRUCTION PROGRAM.
- THE LIFT SUB CONTRACTOR SHALL PROVIDE SHOP DRAWINGS TO THE STRUCTURAL ENGINEER FOR REVIEW.
- LIFTWELL WALL CONSTRUCTION TO BE TO STRUCTURAL ENGINEERS DESIGN

c.f Figure 5.8

THIS DRAWING HAS BEEN DOCUMENTED IN COLOUR
THIS DRAWING IS REQUIRED TO BE PRINTED IN COLOUR
FAILURE TO DO SO MAY RESULT IN LOSS OF INFORMATION
BLACK & WHITE PRINTING MAY BE USED IF SPECIFIC BLACK & WHITE
DOCUMENTS HAVE BEEN OBTAINED FROM STANTEC

REV	DESCRIPTION	DRAWN	APPD	DATE
D	ISSUED FOR TENDER	MCM	MCM	25.01.21
C	ISSUED FOR DETAILED DESIGN PHASE	SRP	KS	21.10.20
B	REVISED ISSUE	KS	MCM	02.10.20
A	PRELIMINARY ISSUE	SRP	KS	25.09.20

FORT STREET PUBLIC SCHOOL
OBSERVATORY HILL
SYDNEY NSW 2000

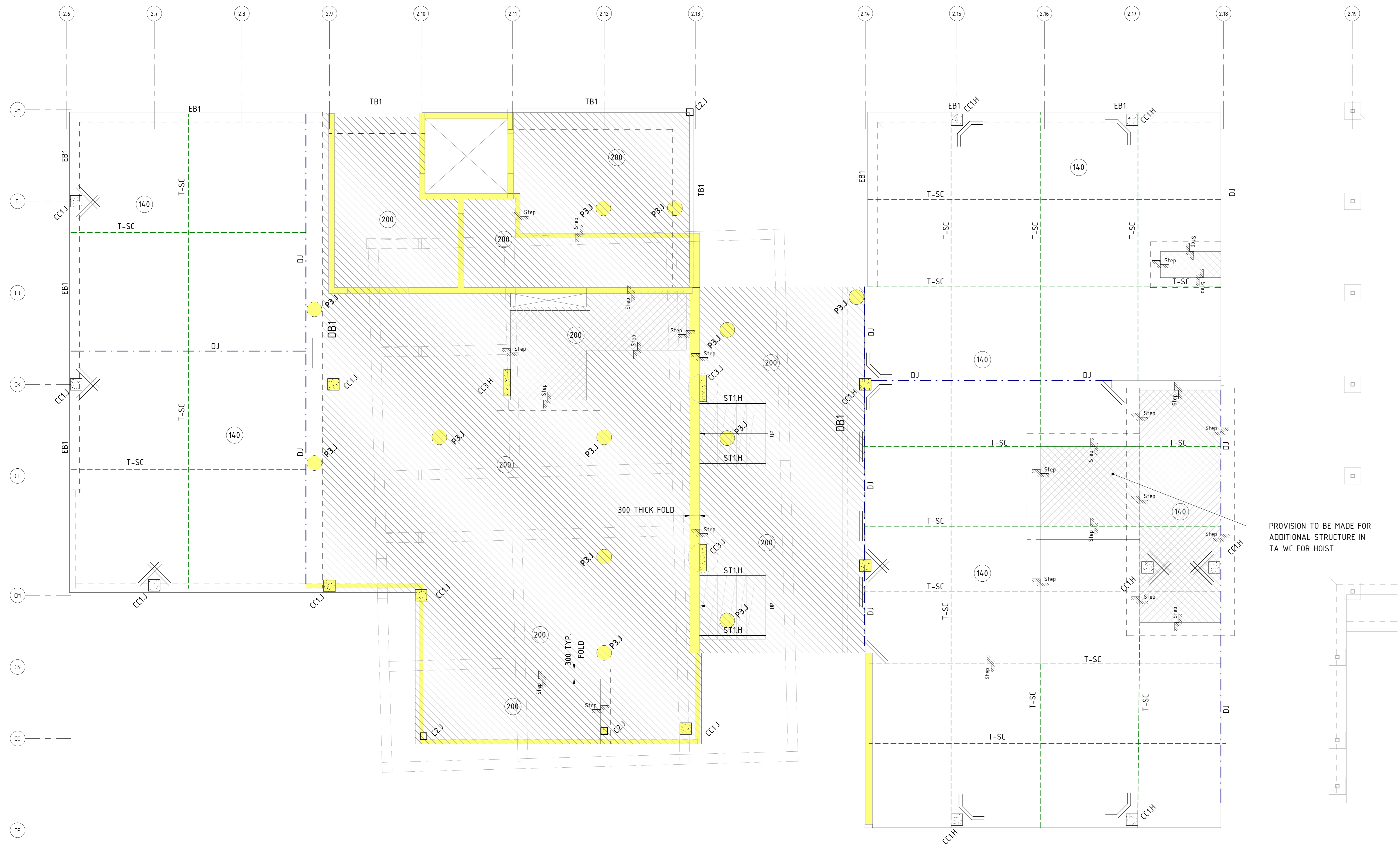
BUILDING D - PASSENGER LIFT
BUILDERS WORKS DETAILS

PROJECT TITLE

TENDER
NOT FOR CONSTRUCTION
VERTICAL TRANSPORTATION SERVICES

Stantec

1:50	44553	VT-DRG-00001	D
SCALE @ A1	PROJECT No	DRAWING No	REV



LEGEND:

- T-SC DENOTES TIED SOFT SAW CUT JOINT
- DJ DENOTES DOWELLED JOINT
- 140 DENOTES MINIMUM SLAB THICKNESS (IN mm)
- [Hatched Box] DENOTES 200 THICK REINFORCED CONCRETE SLAB REINFORCEMENT RATE 120Kg/M²
- [Yellow Box] DENOTES LOAD BEARING ELEMENTS UNDER
- [Hatched Box] DENOTES SLAB SETDOWN TO ARCHITECTURAL DETAIL
- [Line with 50mm] 2N16 TRIMMERS, 1500 MIN. LONG

CONCRETE QUALITY

ELEMENT	SLUMP	AGGREGATE (MAX SIZE)	CEMENT TYPE	ADMIXTURE	F _c (MPa)
OFFICE SLAB	80	20	SL	NIL	32

NOMINAL 56 DAY SHRINKAGE 650 MICROSTRAIN

NOTES:

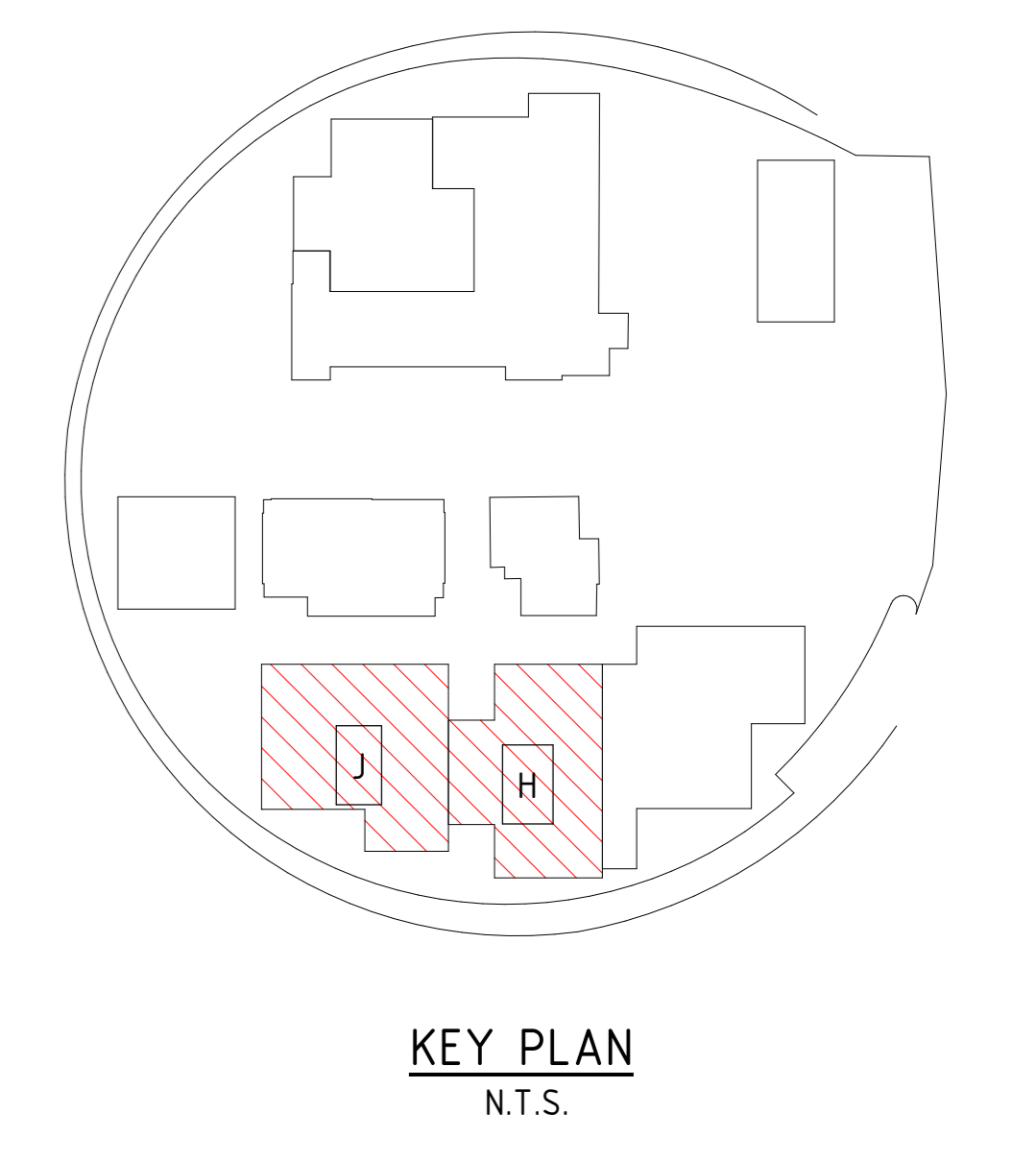
- GROUND FLOOR SLAB THICKNESS TO BE 140mm (U.N.O. ON PLAN)
- F_c = 32 MPa, OVER 1 LAYERS OF 200 MICRON THICK VAPOURPROOF MEMBRANE, REINFORCED WITH SLB2 MESH, 30mm TOP COVER
- ISOLATE ALL COLUMNS USING 20mm & WALLS USING 10mm JOINTEX OR SIMILAR APPROVED.
- SLAB CURING METHOD TO BE COMPATIBLE WITH ARCHITECTURAL FINISHES & CURRENT AUSTRALIAN STANDARDS. CHLORINATED RUBBER RATE TO MANUFACTURERS SPECIFICATION.
- PLACEMENT METHODOLOGY TO BE DETAILED & SUBMITTED FOR REVIEW.
- IF JOINT FILLING SHOULD BE FILLED BEFORE MOST OF THE SLAB SHRINKAGE HAS OCCURRED, SEPARATION SHOULD BE EXPECTED BETWEEN THE JOINT EDGE & THE JOINT FILLER, OR WITHIN JOINT FILLER ITSELF.

CRACKING NOTE:

ATTENTION IS DRAWN TO THE FACT THAT DUE TO THE NATURE OF CONCRETE, CRACKING OF A NON-STRUCTURAL NATURE MAY OCCUR. REINFORCEMENT HAS BEEN ADDED TO THE SLABS TO MITIGATE THE EXTENT OF CRACKING, HOWEVER IT IS NOT POSSIBLE TO GUARANTEE COMPLETE ELIMINATION OF SLAB CRACKING.

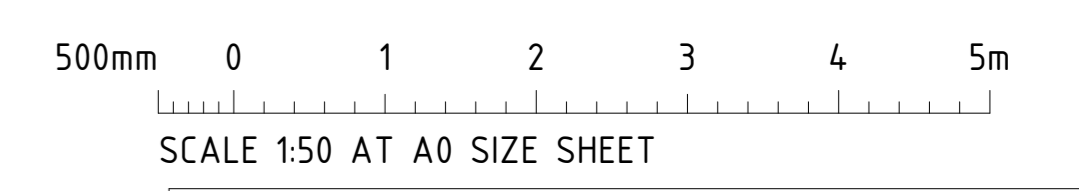
STEELWORK MEMBER SCHEDULE

MARK	MEMBER	SIZE
ST1.H	STAIR STRINGER	250 PFC (TOES OUTWARDS)



BUILDING J & H - GROUND FLOOR SLAB PLAN
1 : 50

c.f Figure 5.9



FOR TENDER

SCALE 1:50 AT A0 SIZE SHEET

ISSUED FOR TENDER 21/01/21 H

STEP DOWN SLAB ADDED 21/01/20 G

ISSUED FOR 100% DETAILED DESIGN 14/01/20 F

ISSUED FOR 60% DETAILED DESIGN 01/10/20 E

ISSUED FOR INFORMATION 14/09/20 D

GROUND FLOOR SLAB ALTERED TO SUIT NEW DESIGN 27/09/20 C

SLAB SETDOWN UPDATES 12/06/20 B

ISSUED FOR INFORMATION 29/05/20 A

AMENDMENTS	DATE	ISSUE

NORTH

ARCHITECT **fjmt**

CLIENT **lendlease**

PROJECT **FORT STREET PUBLIC SCHOOL**
OBSERVATORY HILL
SYDNEY N.S.W. 2000

DESIGNED A.M.C.D. DRAWN O.d.w. DATE MAY 2020 SIZE A0 SCALE AS NOTED CAP REF: C014100.00 - S210

Costin Roe Consulting Pty Ltd.
Consulting Engineers
Level 1, 8 Windmill Street
Wahsh Bay, Sydney NSW 2000
Tel: (02) 9254-7699 Fax: (02) 9241-3731
email: mail@costinroe.com.au

Costin Roe Consulting

PRECISION ACCOUNTABILITY

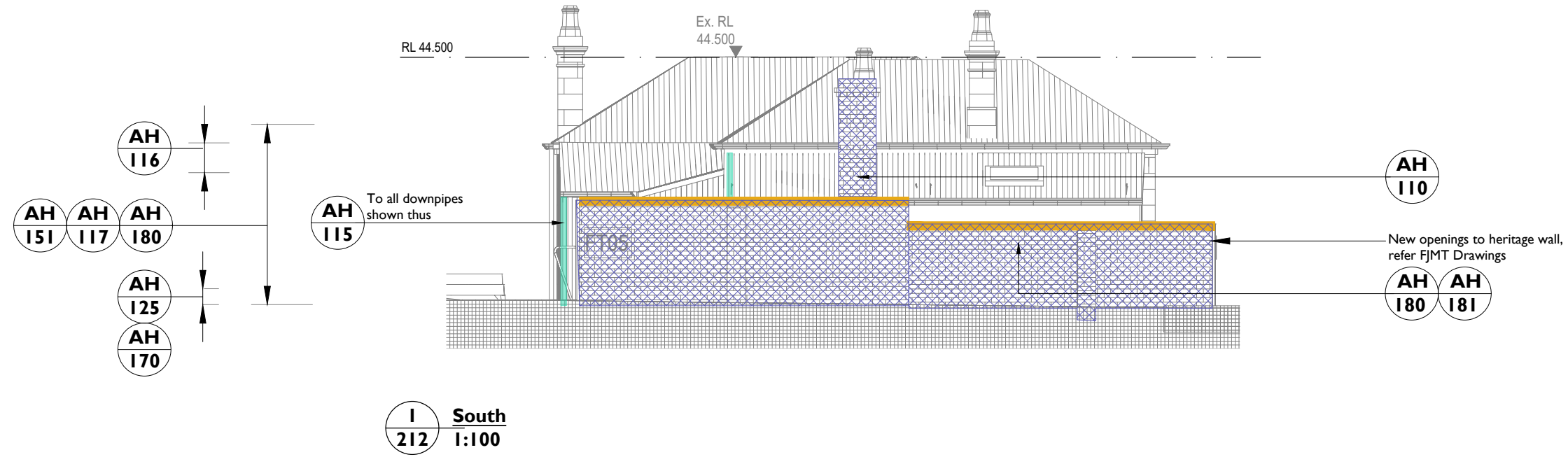
DRAWING NO: **FS- ST- DRG- 2- 00- 6- 10**

DRAWING TITLE: **BUILDING J & H - GROUND FLOOR SLAB PLAN**

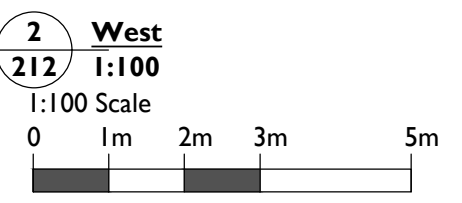
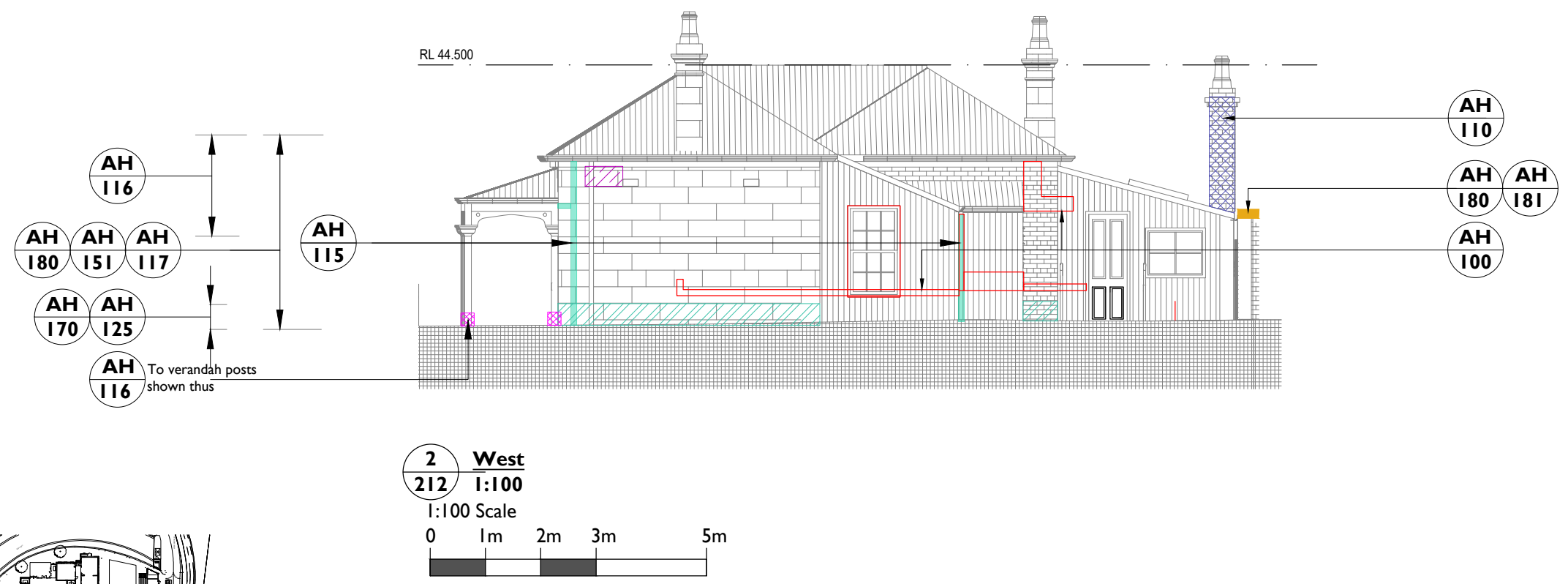
COSTIN ROE REFERENCE NO: **C014100.00 - S 210**

ISSUE: **H**

Notes:
 Drawings are based on survey data and may not accurately represent what is physically present.
 Do not scale from this drawing. All dimensions are to be verified on site before proceeding with the work.
 All dimensions are in millimeters unless noted otherwise.
 Purcell shall be notified in writing of any discrepancies.
 No verification has occurred and conservation works have been annotated to this base.
 This drawing is to be read in conjunction with all conservation documentation prepared by Purcell including Schedule of Conservation Works 22 January 2021 and Specification 22 January 2021 as well as specialist structural advice and Architectural documentation.
 Drawing based on FJMT's Architectural Documentation.

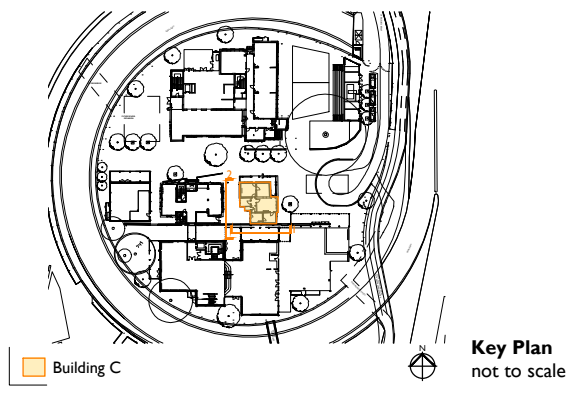


c.f Figure 5.10

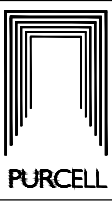


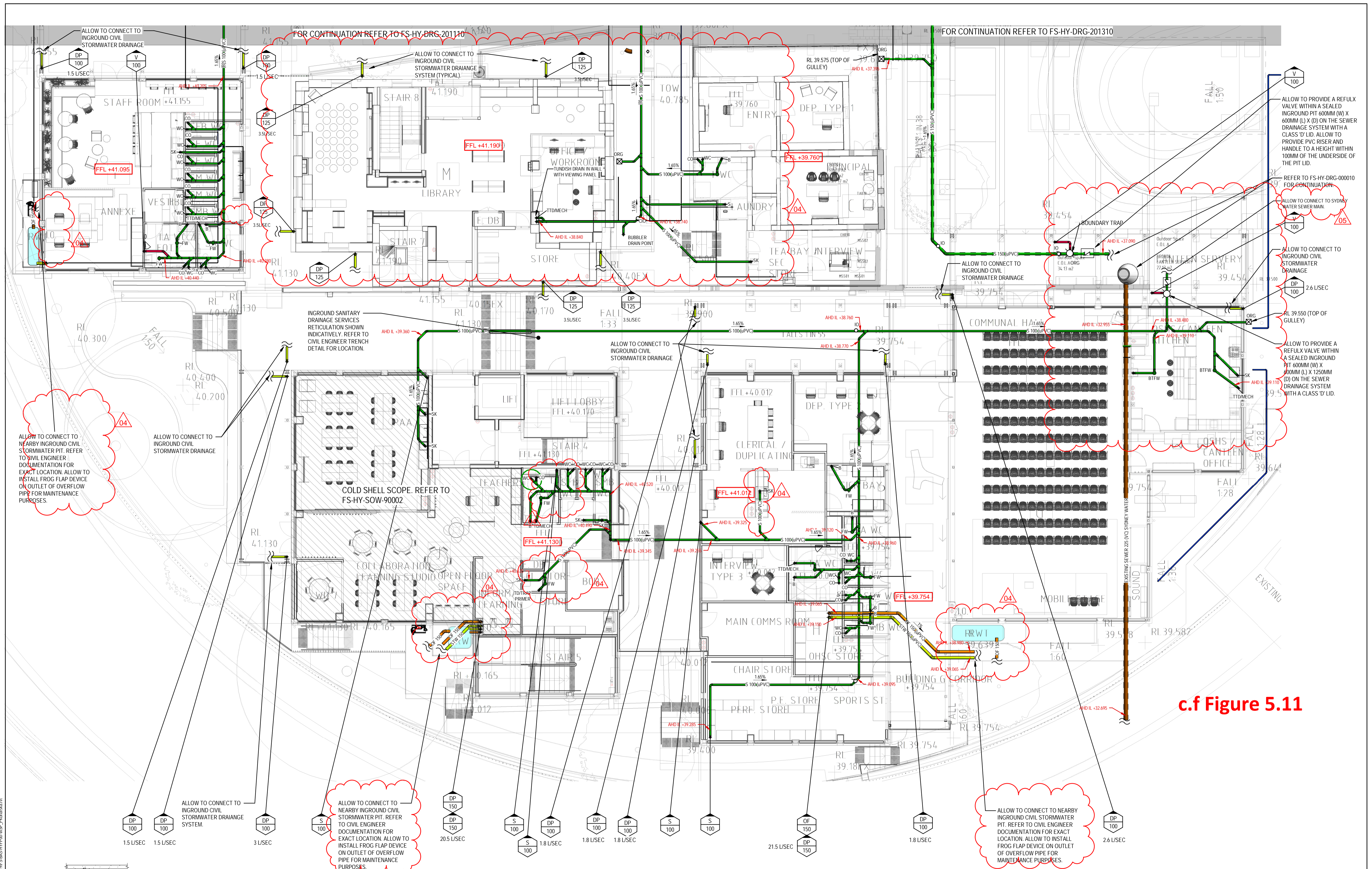
CONSERVATION WORKS LEGEND

- New Render - decorative or flat
- Render repair - decorative or flat
- Damp proof course repair
- Face Brick repair / reconstruct
- Paint removal, repair substrate
- Repair / reinstate Rainwater goods
- Concrete & Screed repair
- Timber Repairs
- Metal / Timber frame window repair / replacement
- Metal Repair
- Repair historic building signage
- Wall or roof weathering - flashing/ capping (new, re-dress or repair)
- Existing flooring - salvage, repair/ re-lay
- New framed lining, refer FJMT drawing
- Repair vents
- Item over (eg soffit or ceiling)
- New Works
- Damp Repair hard-plaster brick wall and/or plaster soffit
- Cracking
- Demolition / Removal
- Hard-plaster repair - decorative or flat



Contract Documentation D5 Issue				
ISSUE	DATE	DRAWN	CHECKED	DESCRIPTION
2	21 Jan 2021	SN	TS	CAD Drawing Background Update
1	21 Oct 2020	SN	TS	Updated for 100% issue
First Issue 07 Aug 2012				
CLIENT	Lendlease			
PROJECT	Fort Street Public School			
DRAWING TITLE	Building C Proposed Elevation - South & West			
SIZE & SCALE	A3L 1:100			
DRAWING STATUS	ISSUED FOR APPROVAL			
JOB NUMBER	240067			
DRAWING NO.	AH-DRG-102212			
REVISION	2			



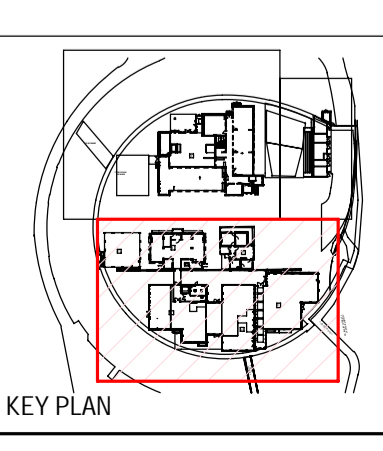


c.f Figure 5.11

HYDRAULIC SERVICES PIPEWORK IS DRAWN OUT OF STRATA

NORTH POINT

NOT SCALE FROM DRAWINGS. CHECK & VERIFY ALL DIMENSIONS & LEVELS BEFORE COMMENCEMENT OF ANY WORK. THIS DRAWING IS REQUIRED TO BE PRINTED IN COLOUR. FAILURE TO DO SO MAY RESULT IN LOSS OF INFORMATION. THIS DRAWING IS NOT TO BE COPIED IN PART OR WHOLE WITHOUT WRITTEN PERMISSION FROM WARREN SMITH & PARTNERS.



REV	DESCRIPTION	DATE
05	CONTRACT DOCUMENTATION ISSUE	12/03/2021
04	CONTRACT DOCUMENTATION ISSUE	22/01/2021
03	100% DETAILED DESIGN	21/10/2020
02	DRAFT 100% DETAILED DESIGN	14/10/2020
01	60% DETAILED DESIGN	30/09/2020

PROJECT
Fort Street Public School
 Observatory Hill, Upper Fort St, Millers Point NSW 2000

ARCHITECT
fjmt architecture interiors landscape urban community
 sydney melbourne uk
 Level 5, 70 King Street + 61 2 9251 7077 w fjmtstudio.com

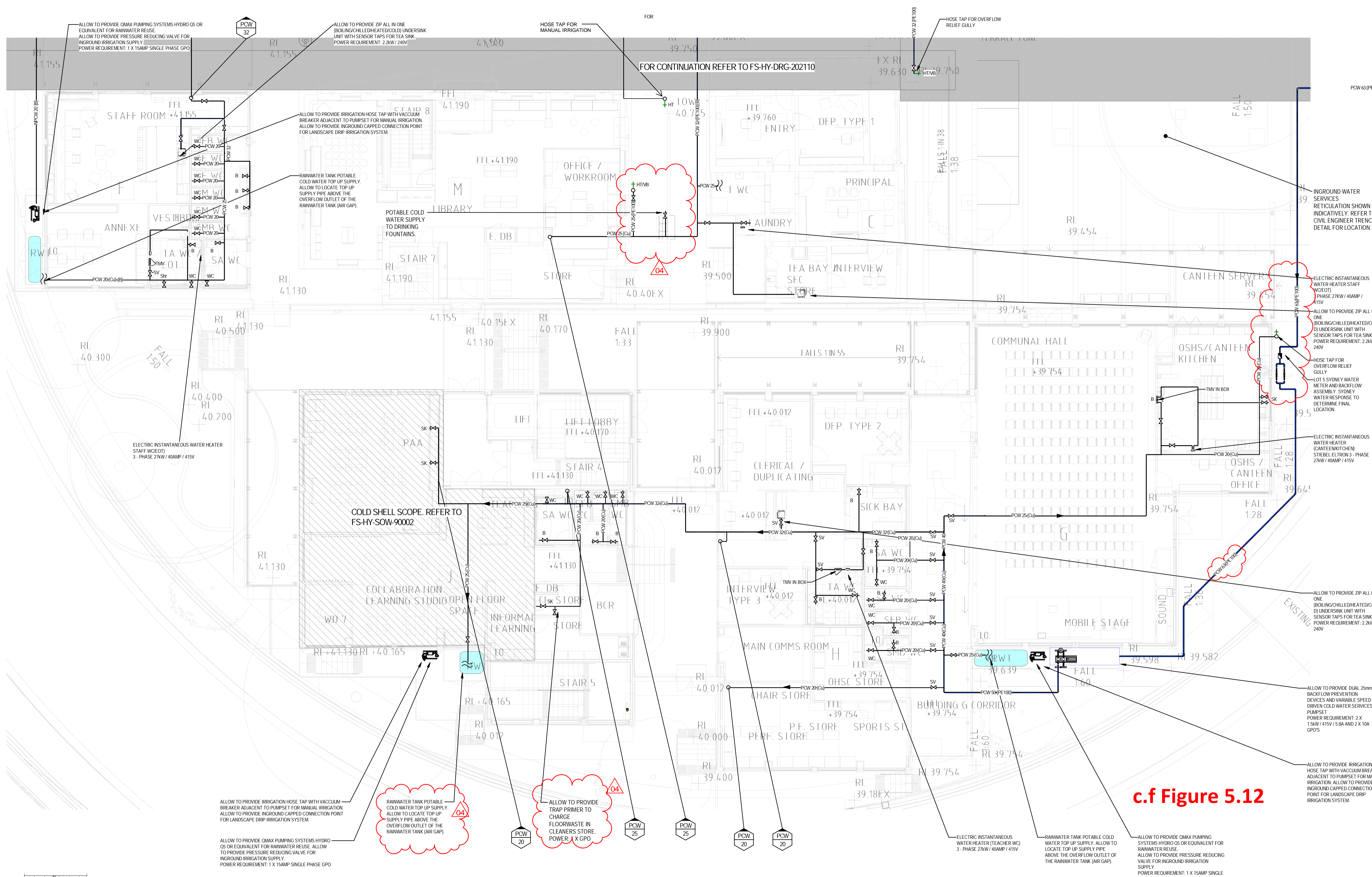
CLIENT
School Infrastructure

Warren Smith & Partners Pty Ltd
 Level 9, 233 Castlereagh St, Sydney 2000 NSW Australia
 02 9299 1312 wsp@warrensmith.com.au
 www.warrensmith.com.au ABN 36 300 430 126

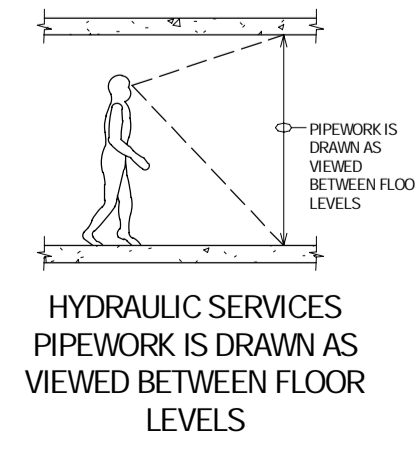
CONSULTING ENGINEERS
 Fire Services
 Civil Services
 Sydney Water Accredited Water Servicing Co-ordinator and Designer

SERVING THE CONSTRUCTION INDUSTRY SINCE 1981.

TITLE	SCALE	DRAWN	DESIGNED	CHECKED	APPROVED
GROUND FLOOR SOUTH - DRAINAGE SERVICES	1:100	SZ	JS	SS	DP
DATE	DRAWING No.	REV			
09/08/20	FS-HY-DRG-201210	05			
JOB No.	6469001				

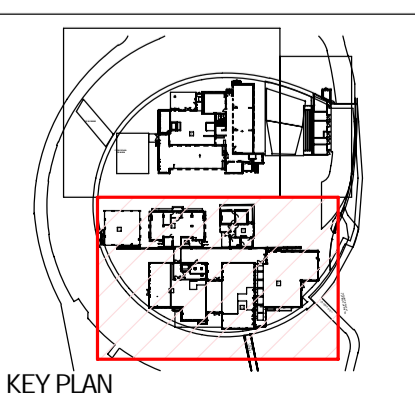


20/10/2021 11:32:34 AM C:\Revit\worksets\2019\F5\BAS\HYDR\WSP_sudde\warrensmith.com.au\1



NORTH POINT

NOT SCALE FROM DRAWINGS. CHECK & VERIFY ALL DIMENSIONS & LEVELS BEFORE COMMENCEMENT OF ANY WORK. THIS DRAWING IS REQUIRED TO BE PRINTED IN COLOUR. FAILURE TO DO SO MAY RESULT IN LOSS OF INFORMATION. THIS DRAWING IS NOT TO BE COPIED IN PART OR WHOLE WITHOUT WRITTEN PERMISSION FROM WARREN SMITH & PARTNERS.



REV	DESCRIPTION	DATE
04	CONTRACT DOCUMENTATION ISSUE	22/01/2021
03	100% DETAILED DESIGN	21/10/2020
02	DRAFT 100% DETAILED DESIGN	14/10/2020
01	60% DETAILED DESIGN	30/09/2020

PROJECT
Fort Street Public School
Observatory Hill, Upper Fort St, Millers Point NSW 2000

ARCHITECT
fjmt studio architecture interiors landscape urban community
Level 5, 70 King Street Sydney NSW Australia
02 9299 1312 wsp@warrensmith.com.au www.warrensmith.com.au ABN 36 300 430 126

CLIENT
NSW GOVERNMENT
School Infrastructure

Warren Smith & Partners
Warren Smith & Partners Pty Ltd
Level 9, 233 Castlereagh St, Sydney 2000 NSW Australia
02 9299 1312 wsp@warrensmith.com.au www.warrensmith.com.au ABN 36 300 430 126

CONSULTING ENGINEERS
Hydraulic Services ■ Fire Services
Civil Services ■ Sydney Water Accredited Water Servicing Co-ordinator and Designer

gccc
SERVING THE CONSTRUCTION INDUSTRY SINCE 1981.

TITLE				
GROUND FLOOR SOUTH - WATER SERVICES				
SCALE	DRAWN	DESIGNED	CHECKED	APPROVED
1: 100	SZ	JS	SS	DP
DATE	DRAWING No.		REV	
09/08/20	FS-HY-DRG-202210		04	
JOB No.	6469001			