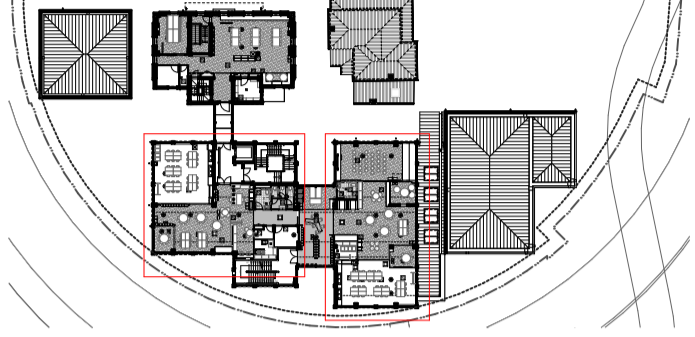


Key Plan
All dimensions and existing conditions shall be checked on site by the contractor before proceeding.
All levels are to Australian Height Datum.
Use finished ground levels.

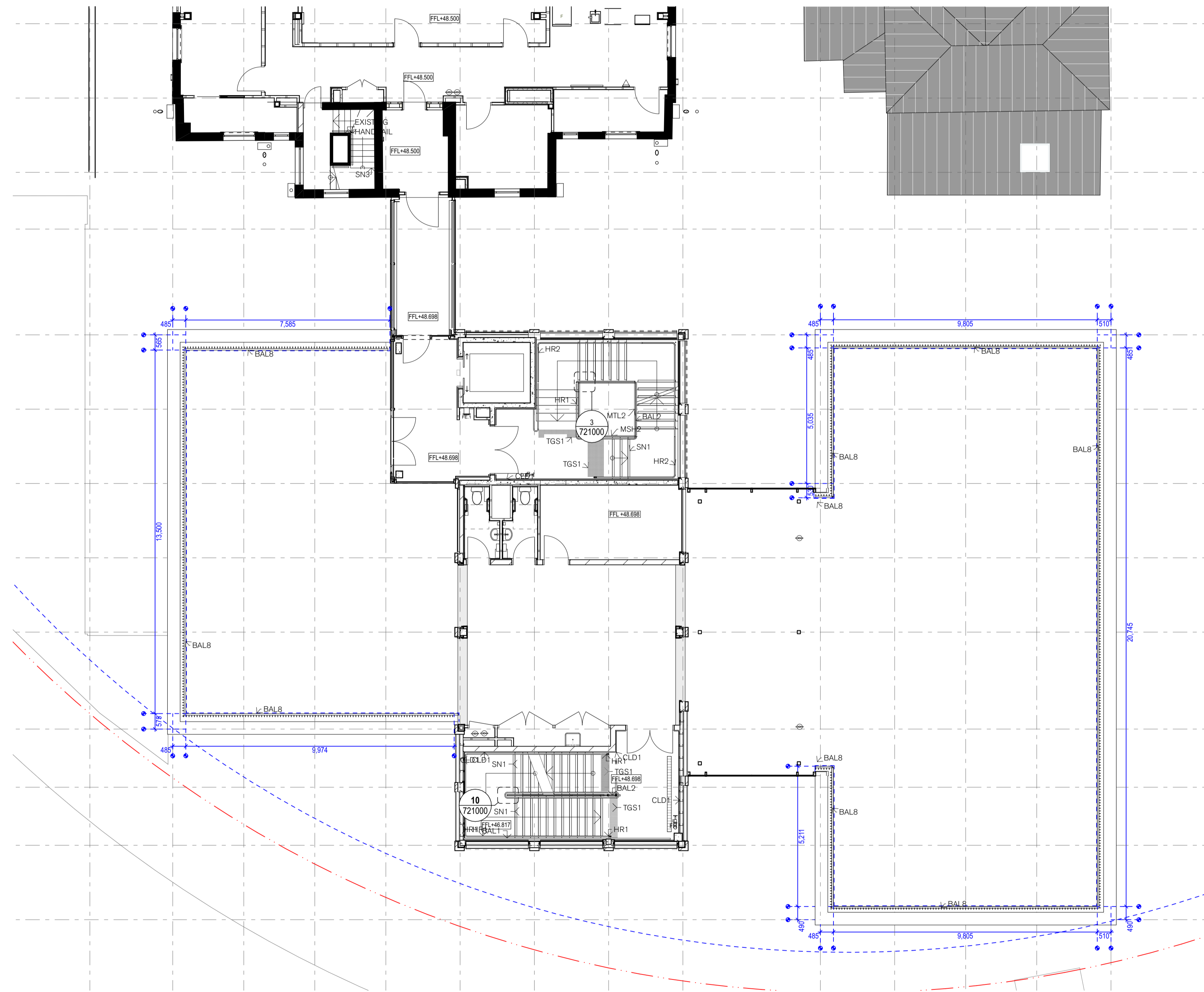
Legend



Stairs + Balustrades Legend

| code | description |
|---------------|---|
| BAL1 | Balustrade Type 1 - Metal Mesh |
| BAL2 | Balustrade Type 2 - Metal Screen |
| BAL3 | Balustrade Type 3 - Metal Palisade |
| BAL4 | Balustrade Type 4 - Infill to Existing Balustrade Stair 2 |
| BAL5 | Balustrade Type 5 - External Glass Balustrade (Building M) |
| BAL6 | Balustrade Type 6 - External Glass Balustrade (Building M L2) |
| BAL7 | Balustrade Type 7 - External Screen to Rooftop plant (Building M) |
| BAL7.1 | Balustrade Type 7.1 - External Balustrade to Amphitheatre |
| BAL8 | Balustrade Type 8 - External Palisade (Building H/J) |
| BAL9 | Balustrade Type 9 - Glass Balustrade to Stair 9 |
| SN1 | Stair Nosing Type 1 - Cast in to Concrete Stair |
| SN2 | Stair Nosing Type 2 - Nosing to timber stair |
| HR1 | Hand Rail Type 1 - Stainless Steel Rail wall mount |
| HR2 | Hand Rail Type 2 - Stainless Steel Rail floor mount |
| HR3 | Hand Rail Type 3 - Stainless Steel Rail (Building M rooftop) |
| HR4 | Hand Rail Type 4 - Stainless Steel Rail (Building M rooftop) |
| TGS1 | Tactile Indicator Type 1 - Discreet SS 316 Tactile Indicators |

NOTE:
- All metal dimensions to structural engineers detail and specification.
- All glass dimensions to Facade Engineers specification.
- All exposed edges to be honed smooth.
- All existing dimensions are approximate only. To be checked on site.
- All painted metal surfaces to have a continuous layer of paint to the underside of all elements checked on site before installation.



1 PLAN Level 2 1:100
1:100

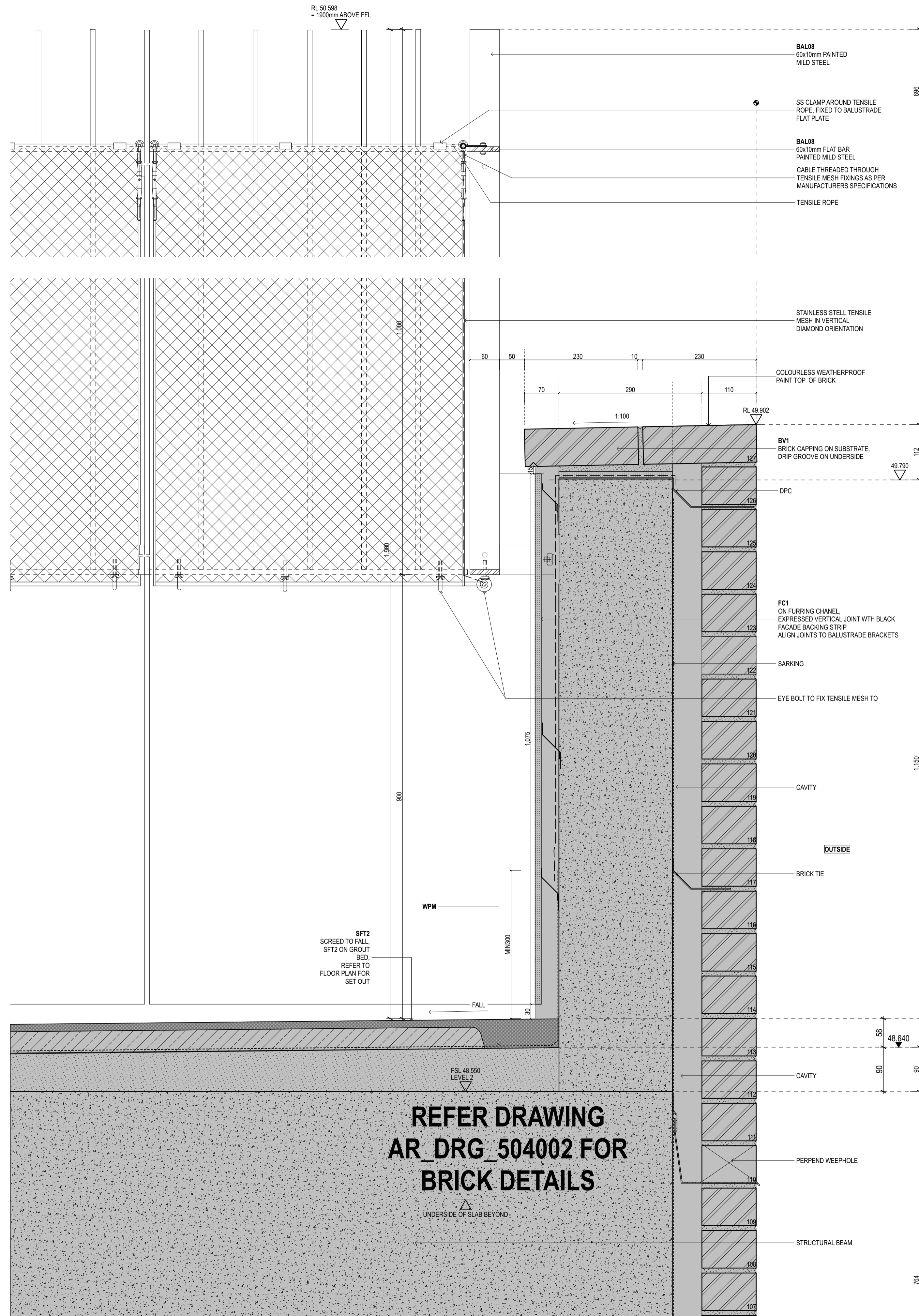
| rev | date | name | by | chk |
|-----|------------|------------------|----|-----|
| A | 31/10/2022 | For Coordination | PC | DB |

Fort Street Public School
Observatory Hill
Sydney NSW 2000

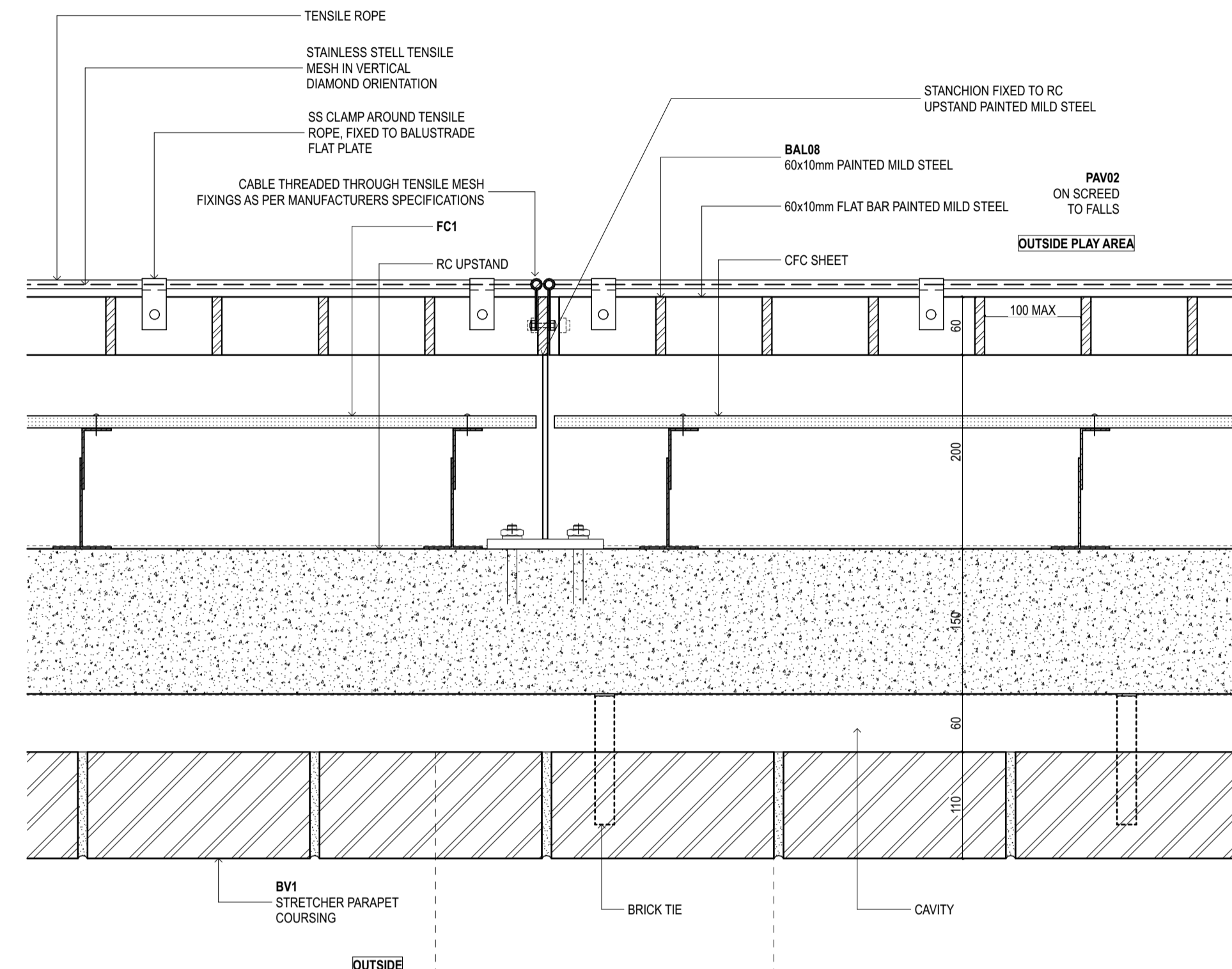
Balustrade Details Scale
BAL8 Balustrade Type 8 Location plan 1:50 @ A1
1:00

Project Code First Issued
FSS 31/10/2023

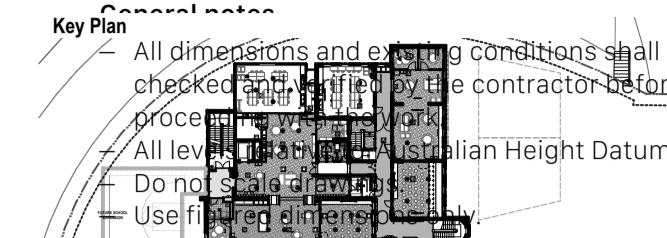
Sheet No. Rev
AR_DRG_728002 A



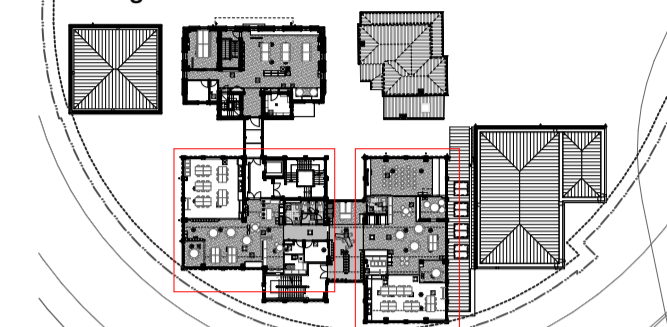
1 DETAIL FT10 A Parapet and Balustrade 08
1:5



2 PLAN FT10 A Plan Parapet and Balustrade 08
1:5



Legend



Stairs + Balustrades Legend

| code | description |
|--------|--|
| BAL1 | Balustrade Type 1 - Metal Mesh |
| BAL2 | Balustrade Type 2 - Metal Screen |
| BAL3 | Balustrade Type 3 - Metal Palisade |
| BAL4 | Balustrade Type 4 - Infill to Existing Balustrade Stair 2 |
| BAL5 | Balustrade Type 5 - External Glass Balustrade (Building M) |
| BAL6 | Balustrade Type 6 - External Glass Balustrade (Building M L2) |
| BAL7 | Balustrade Type 7 - External Screen to Rooftop plant (Building M L2) |
| BAL7.1 | Balustrade Type 7.1 - External Balustrade to Amphitheatre |
| BAL8 | Balustrade Type 8 - External Palisade (Building H/J) |
| BAL9 | Balustrade Type 9 - Glass Balustrade to Stair 9 |
| SN1 | Stair Nosing Type 1 - Cast in to Concrete Stair |
| SN2 | Stair Nosing Type 2 - Nosing to timber stair |
| HR1 | Hand Rail Type 1 - Stainless Steel Rail wall mount |
| HR2 | Hand Rail Type 2 - Stainless Steel Rail floor mount |
| HR3 | Hand Rail Type 3 - Stainless Steel Rail (Building M rooftop) |
| HR4 | Hand Rail Type 4 - Stainless Steel Rail (Building M rooftop) |
| TGS1 | Tactile Indicator Type 1 - Discreet SS 316 Tactile Indicators |

NOTE:
 - All metal dimensions to structural engineers detail and specification.
 - All glass dimensions to Facade Engineers specification.
 - All exposed edges to be honed smooth.
 - All existing dimensions are approximate only. To be checked on site.
 - All painted metal surfaces to have a continuous layer of paint to the underside of all elements checked on site before installation.

| rev | date | name | by | chk |
|-----|------------|------------------|----|-----|
| A | 31/10/2022 | For Coordination | PC | DB |

Fort Street Public School
 Observatory Hill
 Sydney NSW 2000

Balustrade Details Scale
 BAL8 Balustrade Type 8 Section and 1:50 @ A1
 plan 1:5

Project Code First Issued
 FSS 31/10/2023

Sheet No. Rev
 AR_DRG_728003 A

1st November 2023

Madeleine Davies
Senior Project Manager
Lend Lease
Level 14, 300 Barangaroo Avenue
Sydney NSW 2000

RE: Fort Street Public School SSD-10240, Condition E20: Trafficable Rooftops

Introduction

This Heritage Impact Statement (HIS) letter has been prepared on behalf of FJC architects for the installation of safety protection to the metal balustrade located on level 2 of building J and building H as well as the MET level 3 rooftop area with respect to heritage requirements under Condition E20 for the Fort Street Public School (FSPS) redevelopment project (SSD-10340).

State Significant development - *Condition E20: Trafficable rooftops*

Prior to the installation of any safety protection structures required on trafficable rooftops, the design of the structures must be prepared by a suitably qualified and experienced heritage consultant and Heritage NSW and be submitted to the planning secretary for approval.

The letter should be read in conjunction with the architectural drawings prepared by FJC studio and previous heritage documents prepared by Curio Projects.

Site location

The Fort Street Public School (the study area) is located on Observatory Hill, at Upper Fort Street, Millers Point, and is generally defined by the circular cut of the Cahill Expressway on ramp. The study area is located to the south of the Sydney Observatory, between the Bradfield Highway in the east, and residential development along Kent Street to the west.

The Fort Street School (FSPS) site currently consists of four main buildings: The Fort Street School; The Messengers Cottage; The Bureau of Meteorology building (MET Building), and the Environmental Educational Centre (EEC) building. Of these four structures, only the EEC building is not heritage listed. SSD 10340 granted approval for modifications to be undertaken to the heritage buildings, as well as demolition of the former EEC building and other non-heritage listed site structures, along with the construction of new buildings.

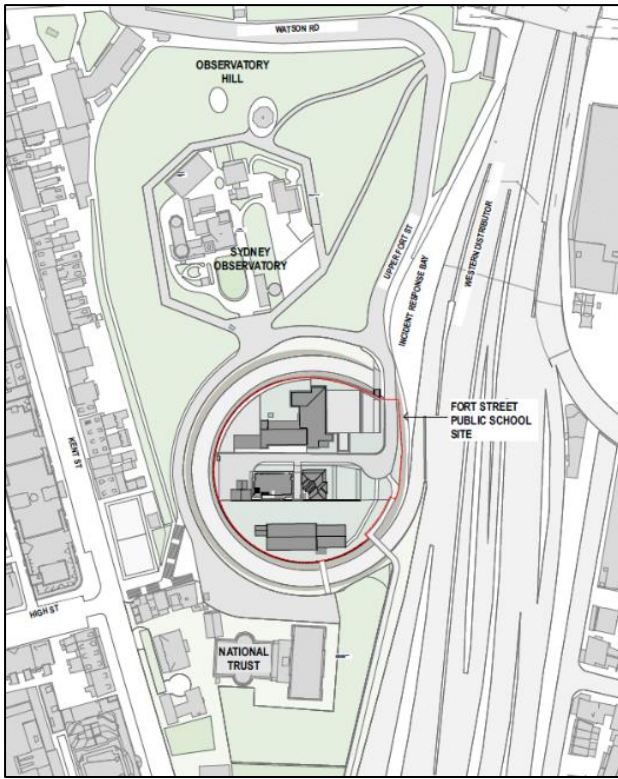


Figure 1: FSPS Location Plan indicating surrounding features (Source: FJMT Studio).



LEGEND





- | | | |
|---|------------------------|---|
|  | CAHILL CUT | 1. Fort Street Public School (1940-41) |
|  | HERITAGE BUILDING | 2. Mature Fig Tree (Heritage Significance) |
|  | NON-HERITAGE BUILDINGS | 3. Bureau of Meteorology Building (1922) |
|  | HERITAGE TREE | 4. Heritage Boundary Wall (c1830s) |
| | | 5. Messenger's Cottage (1862) |
| | | 6. Observatory Hill Environmental Education Centre |

Figure 2: FSPS Site Plan and Features (Source: FJMT 2019).

Statutory Heritage Listings

The FSPS Site is located within the curtilage of the SHR listed 'Millers Point and Dawes Point Village Precinct Conservation Area' (SHR #01682, Figure 4), as well as within the locally listed Millers Point Heritage Conservation Area (HCA C35) (LEP) (Figure 3). Three locally listed heritage items (LEP) are located within the FSPS Site including:

- The Bureau of Meteorology including interior - 9 Upper Fort Street (Sydney LEP #I936)
- The Messenger's Cottage for Sydney Observatory including interior - 9A Upper Fort Street (Sydney LEP #I937)
- Fort Street Primary School Site including buildings and their interiors, fig trees and grounds - 1005 Upper Fort Street (Sydney LEP #I938)

In addition to the heritage items located within the FSPS site, several other heritage items are in close proximity and association to the site, including:

- National Trust Centre Including Buildings & Their Interiors, Retaining Walls & Ground - 1001 Bradfield Highway (Sydney LEP #I876).
- Tennis Court and Pavilion - 96-108 Kent Street (Sydney LEP #I920)
- Sydney Observatory (SHR 01449 and Sydney LEP #I934)
- Observatory Park Including Boer War Memorial, Bandstand, Fences and Landscaping – Upper Fort Street (Sydney LEP #I935)
- Agar Steps, Millers Point (Sydney LEP #I868)

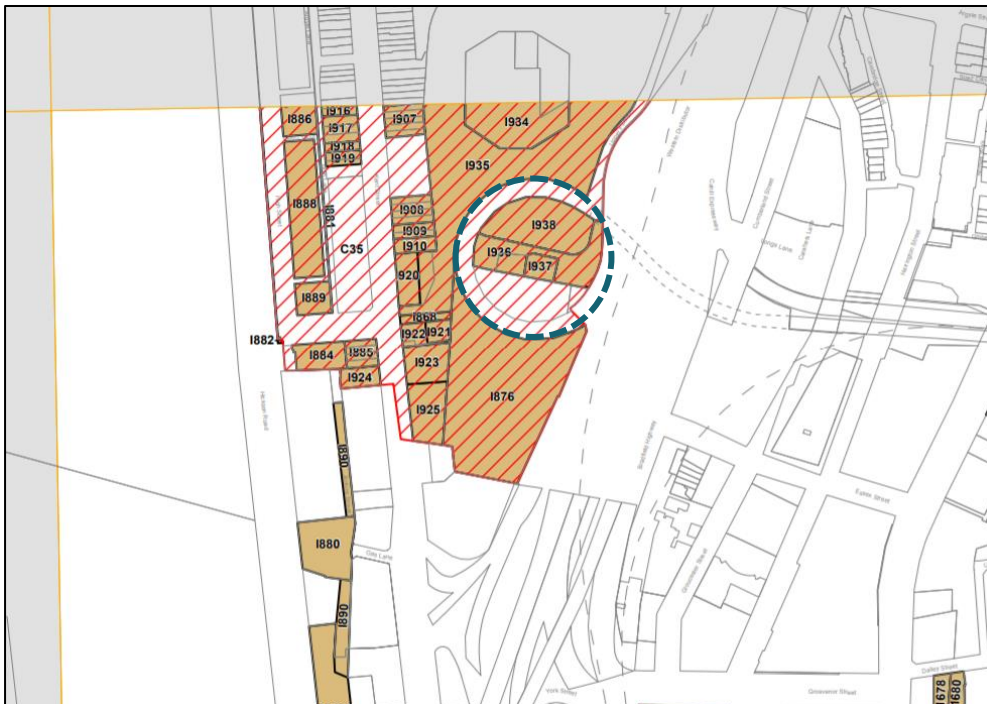


Figure 3: Local Heritage Map. FSPS site indicated in blue. (Source: Sydney LEP 2012, Heritage Map - Sheet HER_014).

Heritage Council of New South Wales



State Heritage Register - SHR:01682 - Plan:1921
 Millers Point & Dawes Point Village Precinct
 Upper Fort Street, Millers Point

Gazettal Date: 21 November 2003
 0 50 100 150 200
 Metres
 Scale: 1:5,000 @A4
 Datum/Projection: GCS GDA 1994



- SHR Curtilage
- Land Parcels
- Railways
- Roads
- LGAs
- Suburbs

Figure 4: SHR Millers Point & Dawes Point Village Precinct. FSPS site indicated in blue. (Source: SHR Listing).

Non-Statutory Listings

A number of organisations maintain registers of buildings or sites which they have assessed as having cultural heritage significance. These registers have no statutory authority; however, the inclusion of a place on a non-statutory register suggests a certain degree of community esteem and appreciation. Non-statutory registers include the National Trust (NSW) Register, the NSW National Trust Industrial Archaeology Sites List, the RAI A 20th Century Register of Significant Buildings, and the Art Deco Society of NSW's Art Deco Building Register.

No heritage items within or including the FSPS site are listed on any non-statutory heritage registers. However, Sydney Observatory and Park are listed on the National Trust Register, as well as the Register of the National Estate.

Fort Street Public School Conservation Management Plan

A draft Conservation Management Plan (CMP) was prepared by TKD Architects in 2016 for the FSPS Site, however the draft report was never finalised, nor submitted to the NSW Heritage Council for review or endorsement. In 2019, Curio Projects was commissioned by Schools Infrastructure to prepare a revised and updated CMP for FSPS site (using the TKD draft CMP as a baseline document—with many sections of the 2016 document remaining relevant), to properly address the current form, function, and future direction of the FSPS site. Curio undertook a gap analysis and assessment of the TKD draft CMP (2016), in order to identify any omissions in the document and/or areas requiring additional research to ensure the CMP complies with NSW Heritage Division criteria for the preparation of CMPs.

A consolidated CMP has therefore been prepared with sections extracted from the TKD Architects draft CMP document, supplemented by additions and revisions (where appropriate) by Curio Projects.

CMP Statement of Significance

The following Statement of Significance for the FSPS Site has been extracted from the CMP (*Curio Projects and TKD Architects 2020, Fort Street Public School—Conservation Management Plan. Report to Schools Infrastructure NSW*). Following the completion of all works on site, and in particular, archaeological investigative works on site, the CMP, including the assessment of significance will need to be updated to reflect the final development and the findings of the archaeological program undertaken on site.

The Fort Street Public School site comprises several institutional, governmental and residential buildings in a setting that has developed from the early nineteenth century, and is a site of historical, aesthetic, and social significance.

The Aboriginal archaeological resources within the Fort Street Public School area, if present, have the potential to contribute knowledge regarding resource gathering and subsistence strategies of Aboriginal people in the area prior to European contact. While midden sites are the most common Aboriginal archaeological sites recorded in the local area, a limited number have been archaeologically investigated.

The Aboriginal archaeological resources within the footprint of Fort Street Public School would have moderate significance. Although an assessment of cultural value has not been undertaken it is likely that, if present, the local Aboriginal community would view any Aboriginal archaeological deposits as being of high cultural value to the community.

The historical archaeological resource associated with the early buildings within the footprint of Fort Street Public School, the Military Hospital's surgeon's residence (later associated with the National School), the Observatory's Messenger's Cottage and associated buildings and facilities, have the potential to provide information regarding the lives of the people living and working at these early colonial institutions. Particular aspects of colonial Sydney would be demonstrated in the physical evidence of buildings and in an artefact assemblage of the detritus of everyday life discarded by military and medical personnel, teachers and students, and staff of the Observatory. An extensive artefact assemblage that may be present in wells, rubbish and / or cess pits would have the potential to provide an insight into lifestyles associated with the Military Hospital or Observatory that would contribute to substantive questions regarding institutional life in the colony. The historical archaeological resources within the footprint of Fort Street Public School have state significance.

Fort Street Public School is associated with Fort Street School, a highly significant school that was established as a National School in 1850. Although not a part of the original school site, the building is the only section of the school at Observatory Hill that continues to serve its original function. It resulted from the construction of roadworks of the historically significant City Circle railway loop viaduct and the Cahill Expressway. Fort Street Public School reflects the influence of prominent architect Harry Rembert, amongst the most significant architects to have worked in the Department of Public Works Government Architects Branch during the middle third of the twentieth century, The building is a fine, representative and generally intact example of the Inter War Functionalist style and a rare example of this style applied to public school architecture by the Government Architect's Branch. Its planning is a concise representation of public-school design during the interwar period. The building is also significant for its visual contribution to the setting of Observatory Hill Park. Fort Street Public School has social significance, particularly for former pupils and is likely to have significance for parents of pupils and former staff.

The Messenger's Cottage is historically significant because of its associations with the Sydney Observatory. and because of its strong associations with the Bureau of Meteorology, which occupied it for several years between 1916 and 1922 and continued to use it after that period. The Cottage is also historically significant because it housed what has been claimed to be the first corporate childcare centre in Australia, opened in 1987. The two main nineteenth century phases of construction are associated with the office of the Colonial Architect headed by Alexander Dawson and James Barnet. The Messenger's Cottage is a representative and relatively intact example of a modestly scaled Victorian era cottage that was built to house a government employee of the Sydney Observatory and may have some rarity value

because of that. It has aesthetic significance because of its scale and picturesque massing. It is one of three comparable cottages on Observatory Hill.

Messenger's Cottage provides a tangible historical connection between the FSPS Site and the Observatory to the north, its very presence being representative of the wider connectivity and historical use of the whole of Observatory Hill from the mid-1800s onwards- many years prior to the physical boundary created by the excavation for the Cahill Expressway.

The Bureau of Meteorology building is historically significant as the first purpose-designed building to house the Bureau's activities in Sydney and possibly NSW after the formation of the Commonwealth Meteorological Bureau in 1908. It has strong historical associations with weather observations on Observatory Hill and with the former Messenger's Cottage, which housed the Bureau at the beginning of the twentieth century. It is a fine example of the work of the Department of Works and Railways under the direction of John Smith Murdoch and is a restrained and relatively intact example of the Inter War Free Classical style that demonstrates subtle refinement in the detailing of its external fabric. The Bureau of Meteorology building was built as purpose designed headquarters for the main NSW branch of the organisation and is considered to be rare both at State and National level.¹

Proposed Works

The works proposed are required to augment childproofing of the rooftop metal balustrades

- Install tensile mesh behind the completed metal balustrade to building H and building J at Level 2 play areas and the MET level 3 rooftop area.



Figure 5: The proposed tensile mesh to be located behind the metal balustrade of building J and building H. Source: FJC Studio

¹ CMP (Curio Projects and TKD Architects 2020, Fort Street Public School—Conservation Management Plan.

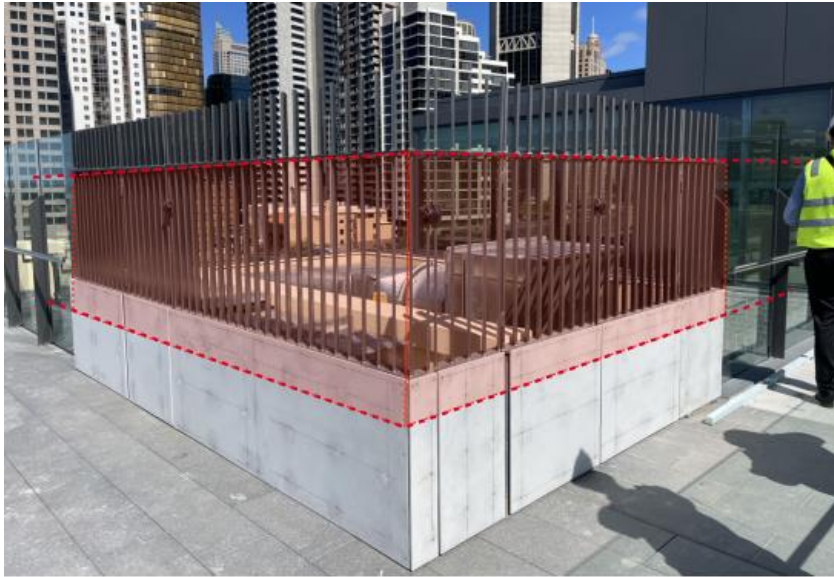


Figure 6: The proposed location of the tensile mesh to be located behind the metal balustrade at the MET building. Source: FJC Studio

Assessment of Heritage Impact

The proposed works will have a minor and acceptable impact on the Heritage item for the following reasons:

- The proposed works will have no physical impact on any significant heritage fabric.
- The proposed works are to contemporary fabric and are reversible without any damage or impact to any significant heritage fabric.
- The proposed works will have no visual impact on significant view corridors towards the heritage item.
- The proposed works utilise tensile mesh which will sit behind and at the same height of the approved contemporary metal balustrade and will read as transparent when viewed at ground floor level.
- The proposed works will have no impact on the significance of the heritage item.

Please do not hesitate to contact Celine Louizos, Heritage Specialist at celine@curioprojects.com.au, if you have any questions regarding the above.

Yours sincerely,

Natalie Vinton
CEO
Curio Projects Pty Ltd.



Mr Shane Lee
Assistant Project Director
School Infrastructure NSW
GPO Box 33
SYDNEY NSW 2001

By email: matthew.spooner@rpinfrastructure.com.au

Dear Mr Lee

Fort Street Public School Expansion SSD-10340 – 07/10/2020, incl Mod 1 – 22/12/2021 and Mod 2 – 16/06/2023 – Condition E20 – HNSW Consultation

Thank you for your email and supporting documentation received on 18 January 2024 requesting additional consultation with Heritage NSW in relation to Condition E20 of the Fort Street Public School Expansion approval (SSD-10340 – 07/10/2020, incl Mod 1 – 22/12/2021 and Mod 2 – 16/06/2023).

The condition states:

Prior to the installation of any safety protection structures required on the trafficable rooftops (the Safety Protection Structures), the design of the structures must be prepared in consultation with a suitably qualified and experienced heritage consultant and Heritage NSW and be submitted to the Planning Secretary for approval.

This condition was previously addressed (HMS 2989) and approval was received from the Planning Secretary on 5 September 2023. However, there is now a proposed minor modification to the design. The following information has been provided to document the design amendment, in addition to the original submission:

1. Design Report, prepared by FJC
2. Design Documentation, prepared by FJC
3. *Heritage Impact Statement*, prepared by Curio, dated 1 November 2023.

It is understood that an additional non-climbable element is required to improve the safety of the installation, in the form of the addition of an open mesh screen to the existing balustrade. It is

understood that the proposed works will have no physical impact on any significant heritage fabric and will have no visual impact on views towards the heritage item.

As delegate of the Heritage Council of NSW, I confirm that the above information sufficiently addresses the HNSW consultation requirements of Condition 20, in relation to approval SSD-10340.

If you have any questions about this correspondence, please contact Ruth Berendt, Senior Assessments Officer at Heritage NSW on (02) 9873 8500 or heritagemailbox@environment.nsw.gov.au

Yours sincerely

Rochelle Johnston

Rochelle Johnston
Senior Manager, Major Projects
Heritage NSW
Department of Climate Change, Energy, the Environment and Water
As Delegate of the Heritage Council of NSW

20 February 2024