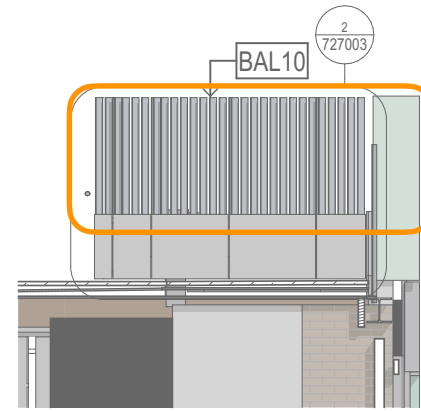
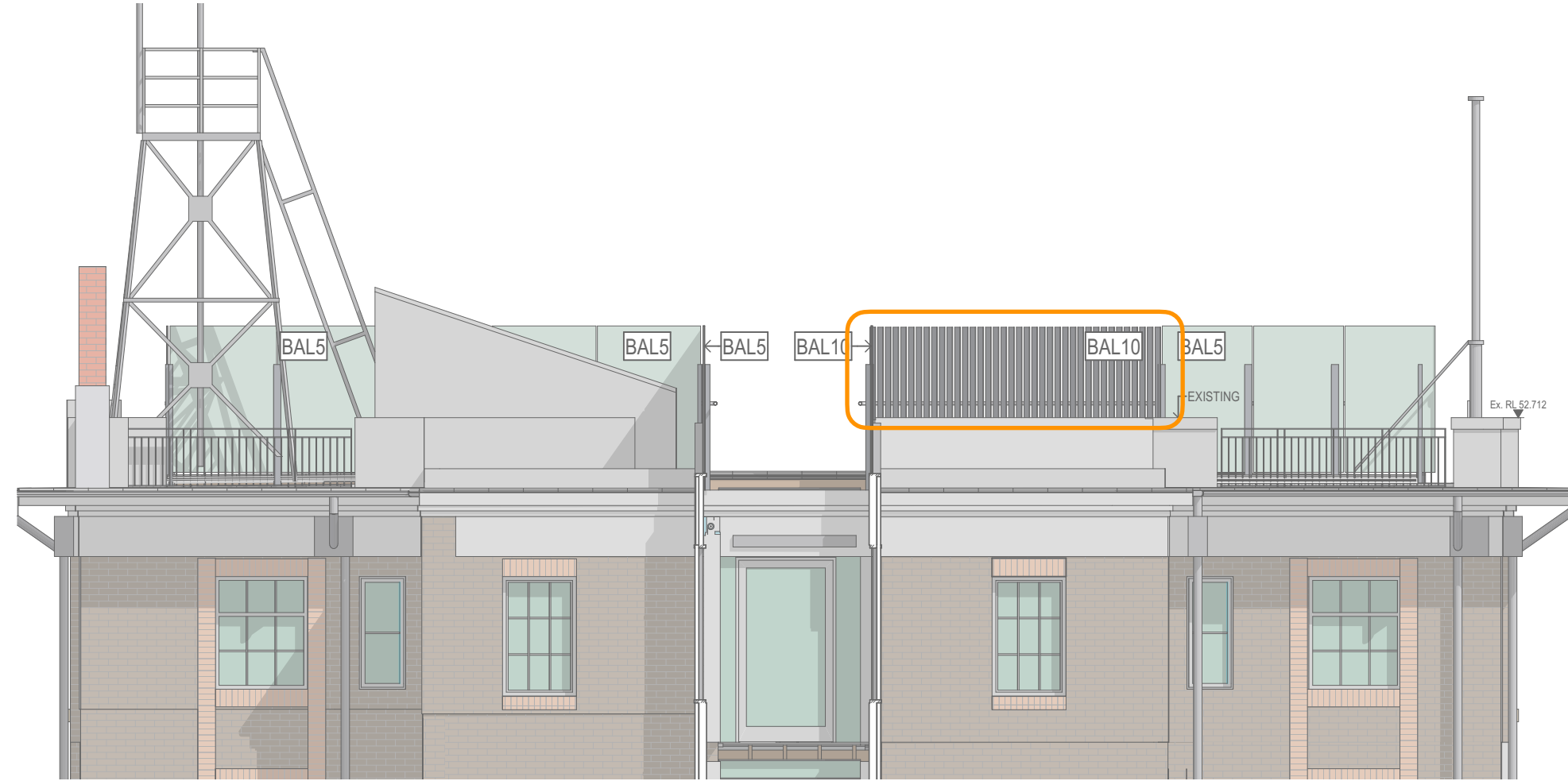
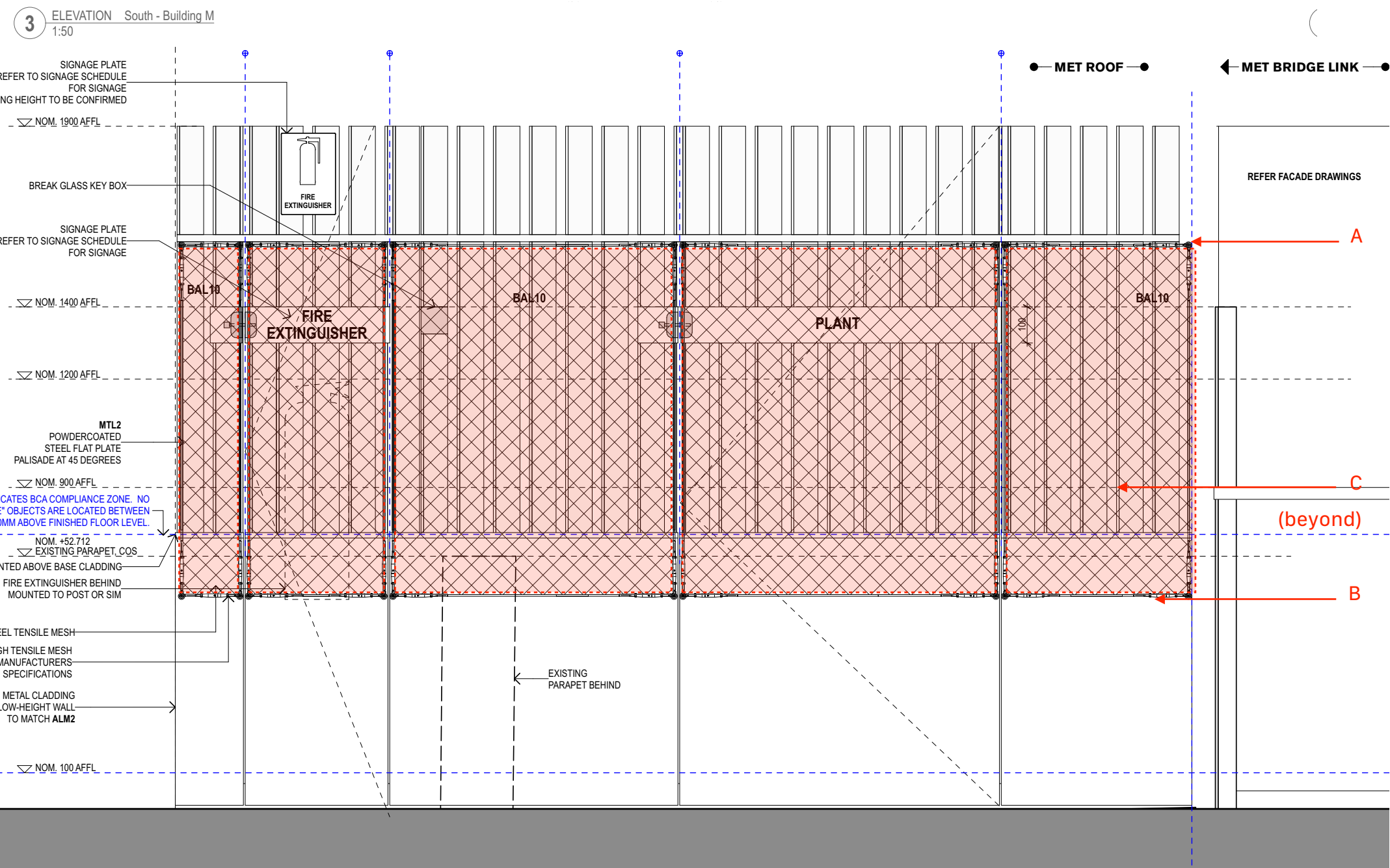
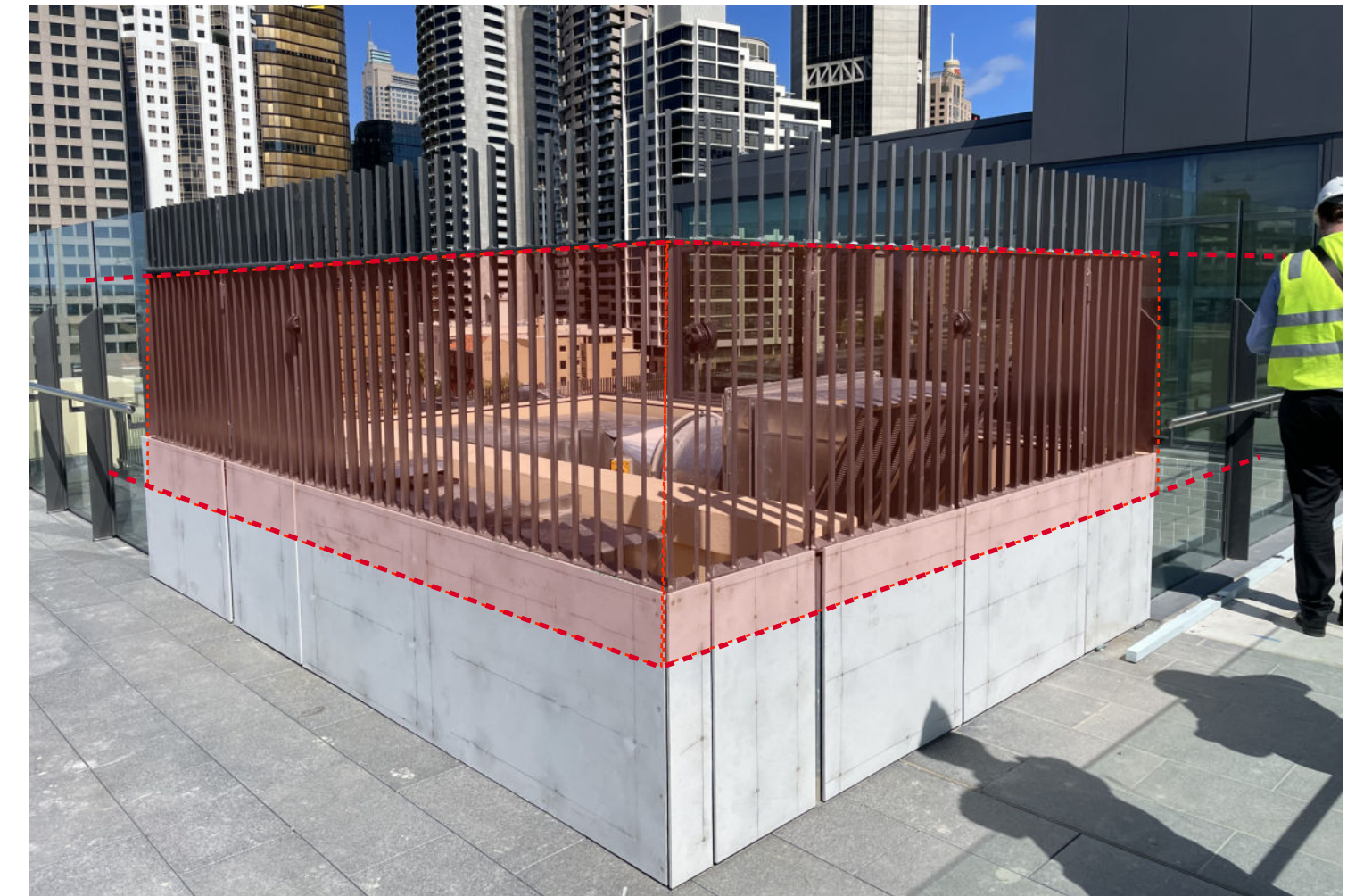


Upgrade Option - Tensile Mesh - Building MET

Type: Webnet Tensile 316 SS. Mesh. 1.5mm Gauge, 25mm Max Aperture. Vertical 'V' Pattern, 50° Mesh Angle

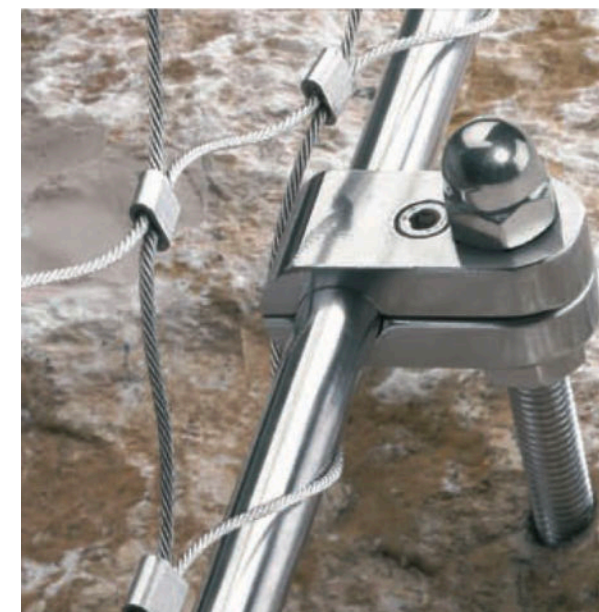
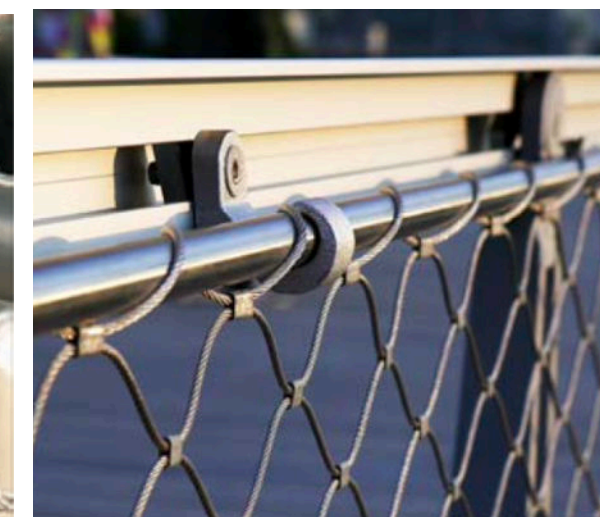


6 ELEVATION Building M L3 WEST
1:50

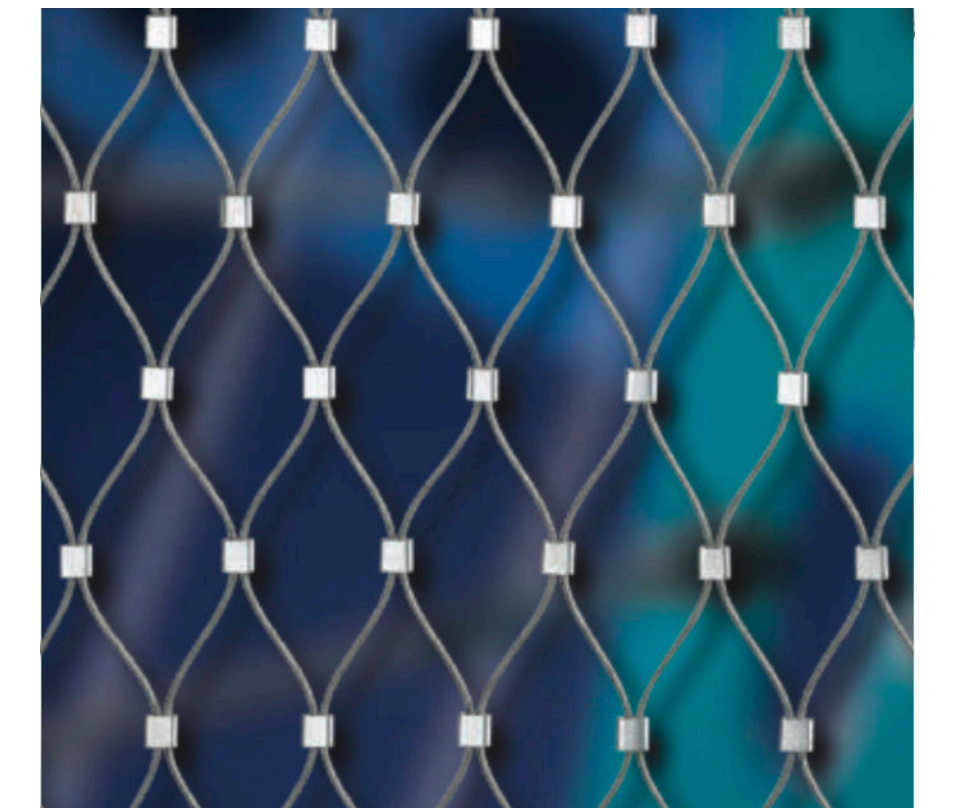
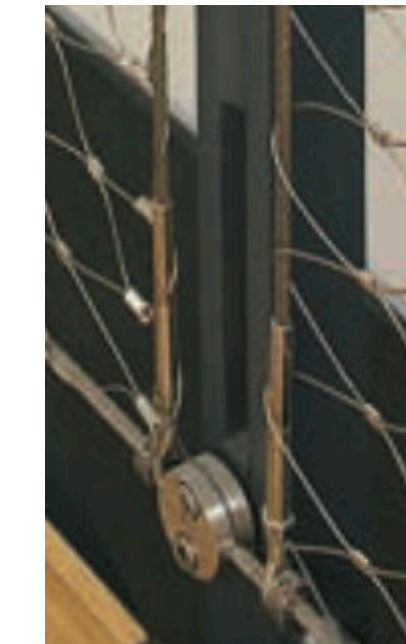
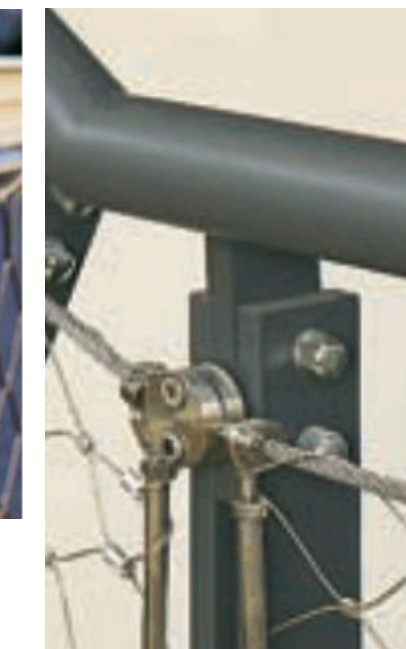


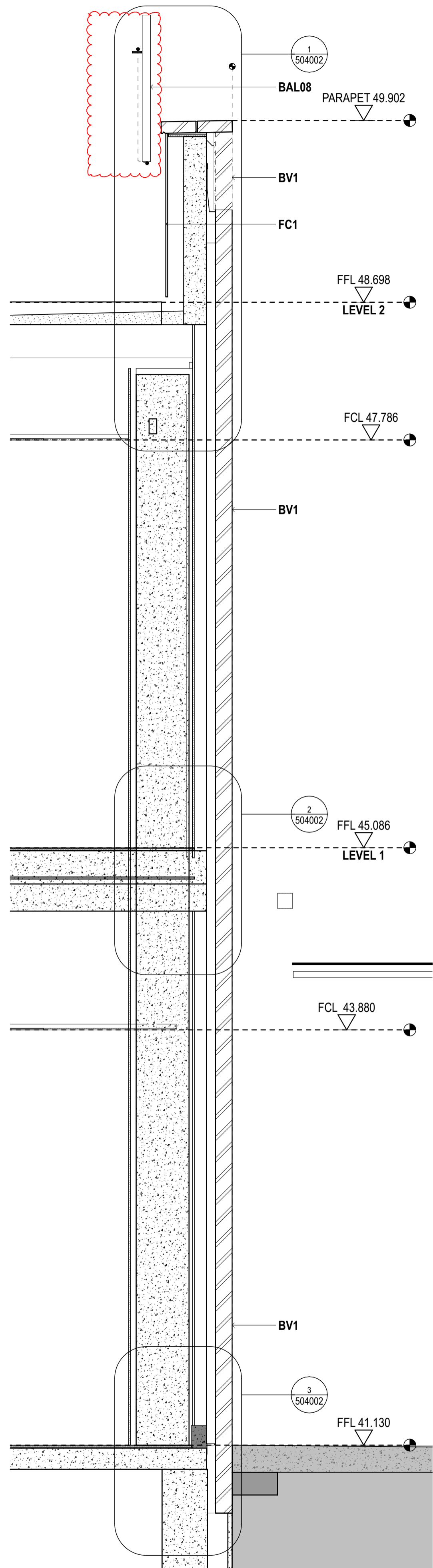
2 ELEVATION PLANT ENCLOSURE - WEST
1:10

A & B - options

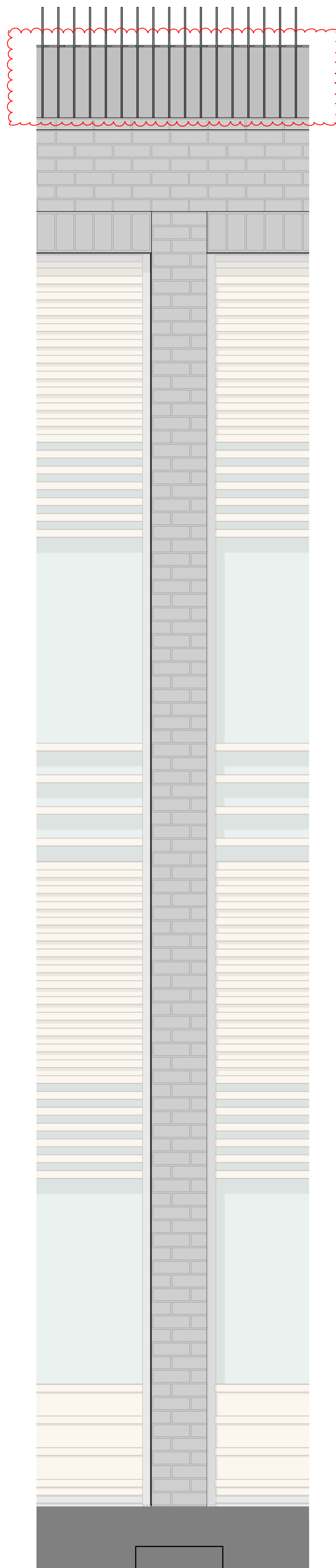


C only - options

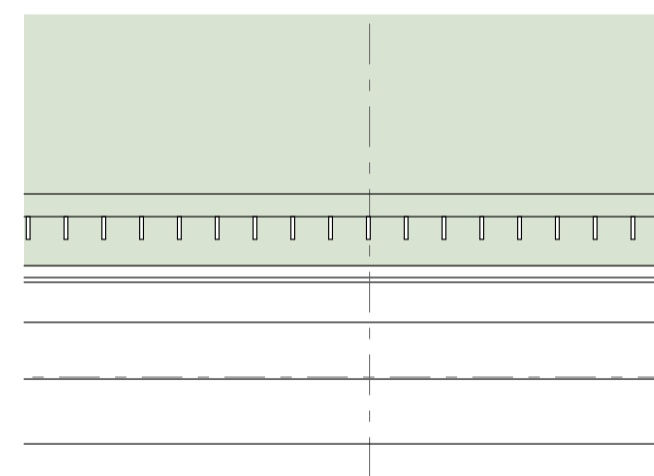




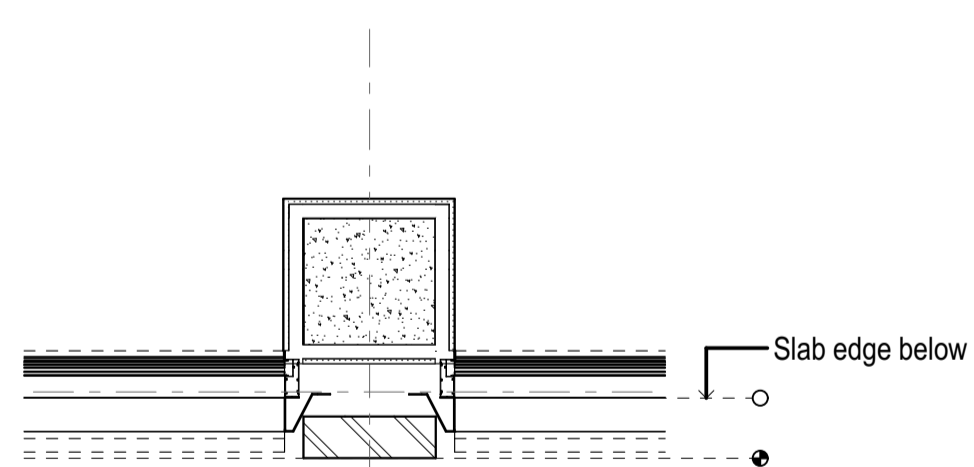
1 SECTION FT10
1:20



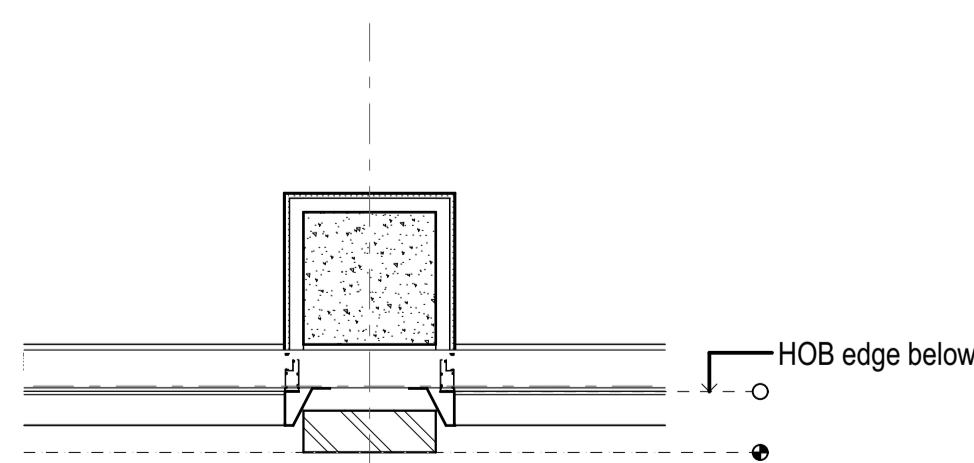
2 ELEVATION FT10A
1:20



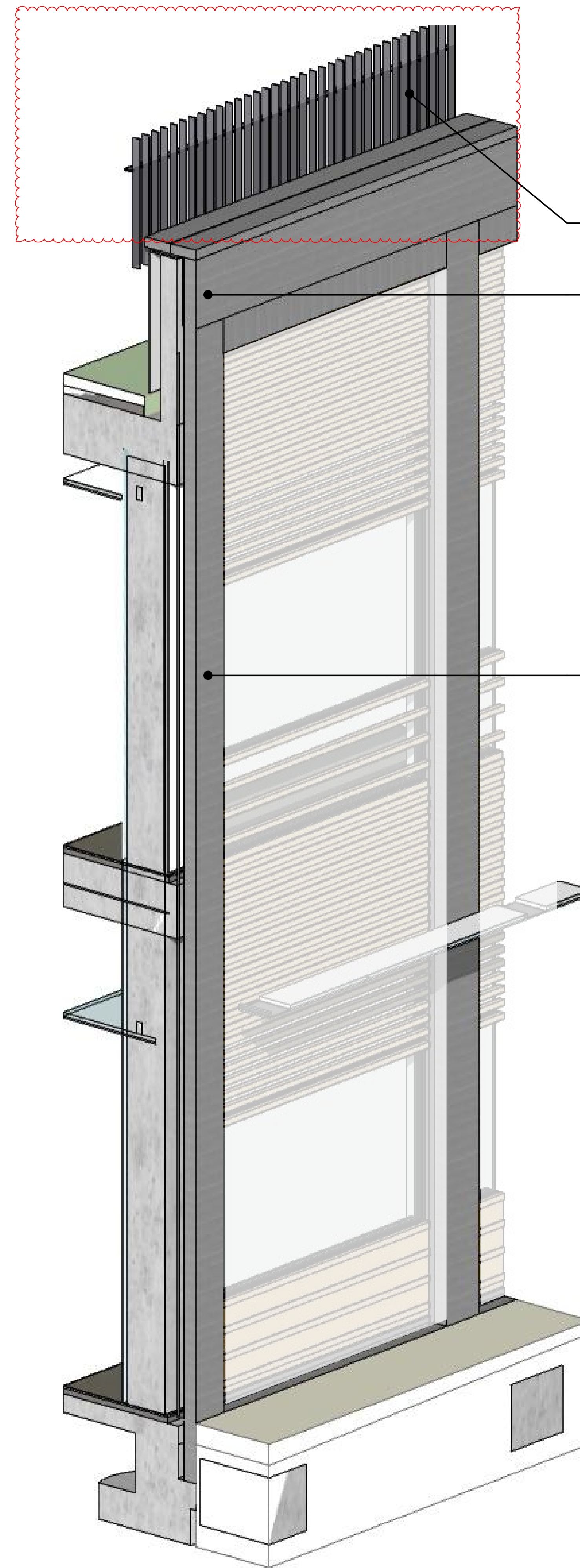
5 PLAN FT10 A Level 2
1:20



4 PLAN FT10 A Level 1
1:20



3 PLAN FT10 A Ground Level
1:20



6 AXONOMETRIC FT10

General notes
 - All dimensions and existing conditions shall be checked and verified by the contractor before proceeding with the work.
 - All levels relative to 'Australian Height Datum'.

FT10 A
 Painted galvanised steel palisade balustrade, 1900 mm high

Legend
FT10 A
 Exposed brick veneer parapet

FT10 A
 Exposed brick veneer piers

FACADE SETOUT LINE

rev	date	name	by	ch	lt.
H	31/10/20	23	For Coordination		PC
G	14/4/20	2	For Construction		PC
F	16/3/20	22	For Construction		PC
E	21/2/20	22	For Construction		PC
D	14/2/20	22	Amendments to suit consent modification		PC
C	31/1/20	22	For Coordination		PC
B	11/9/20	1	Issue for Crown Certificate 2		JB
A	20/8/20	21	Issue for Coordination		JB
03	22/1/20	21	Contract Set Issue		AW Y
02	21/10/20	020	100% DD Documentation		AW Y
01	29/9/20	20	Detailed Design Phase 60% Documentation		AW Y

Fort Street Public School
 Observatory Hill
 Sydney NSW 2000

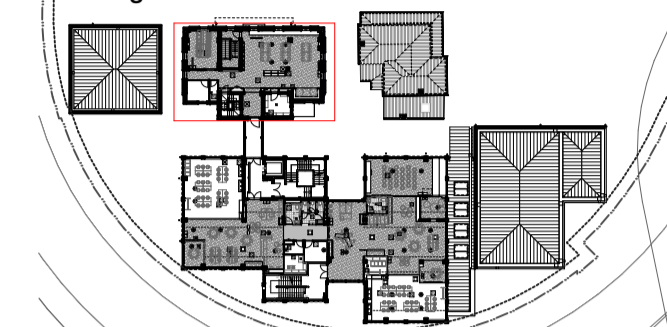
Facade Types
 FT10 A Building J/H
Scale
 1:20 @ A1

Project Code
 FSS
First Issued
 29/9/2020

Sheet No.
 AR_DRG_502601
Rev
 H

Key Plan
All dimensions and elevations shall be checked on site by the contractor before proceeding with construction.
All levels shall be referenced to Australian Height Datum.
Do not scale drawings.
Use finished dimensions only.

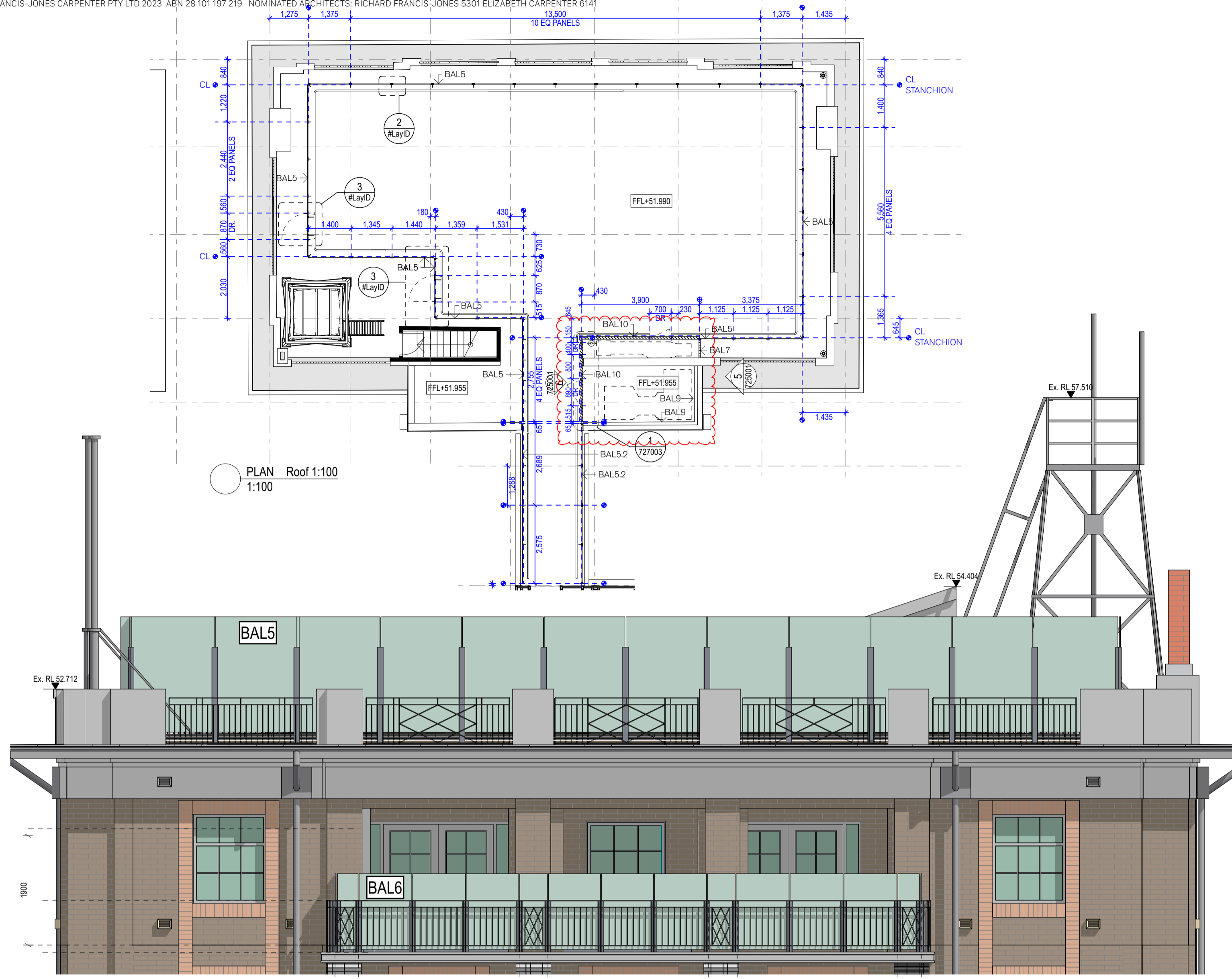
Legend



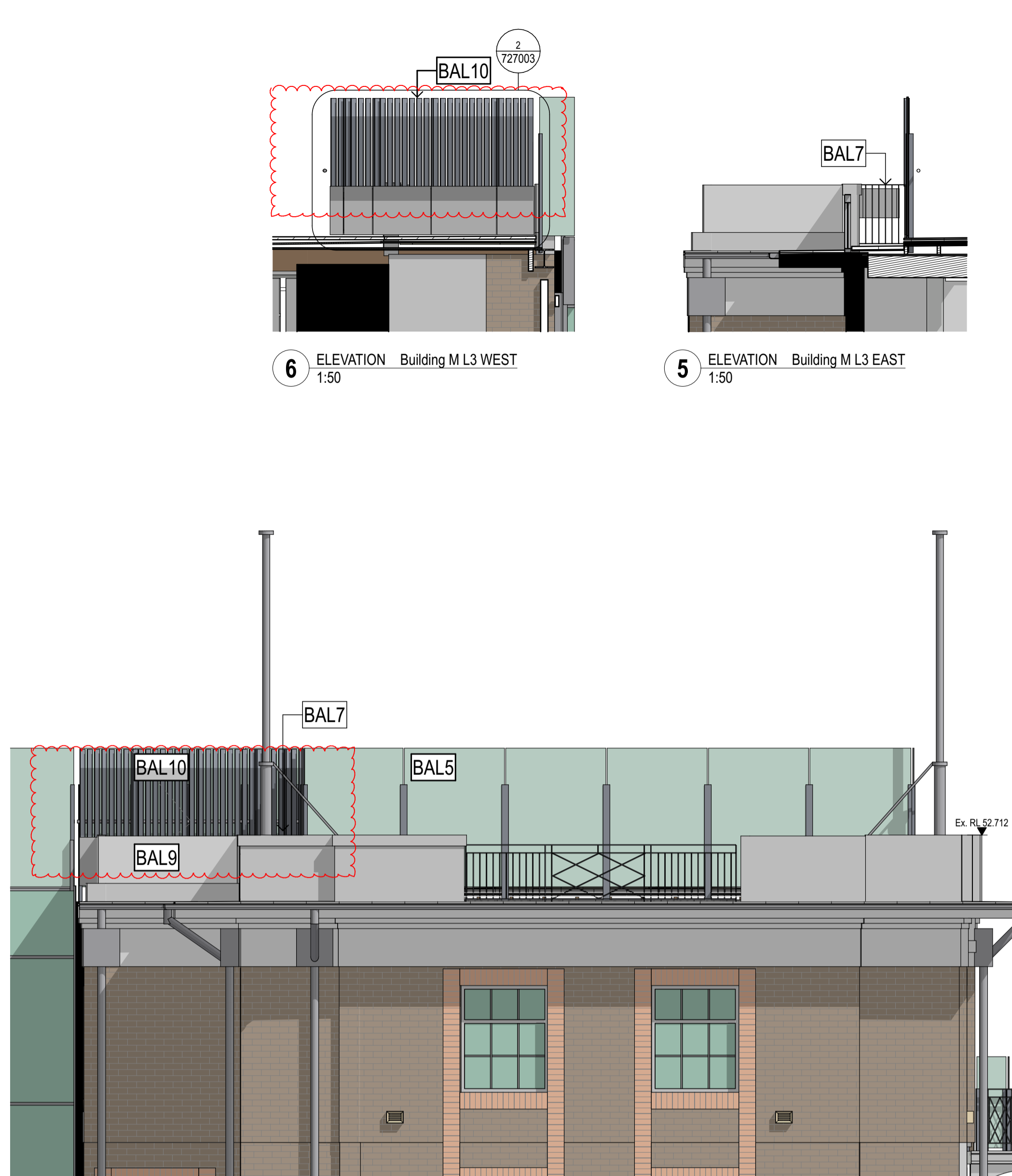
Stairs + Balustrades Legend

code	description
BAL1	Balustrade Type 1 - Metal Mesh
BAL2	Balustrade Type 2 - Metal Screen
BAL3	Balustrade Type 3 - Metal Palisade
BAL4	Balustrade Type 4 - Infill to Existing Balustrade Stair 2
BAL5	Balustrade Type 5 - External Glass Balustrade (Bldg M)
BAL5.2	Balustrade Type 5.2 - External Glass Balustrade (Bridge)
BAL5.3	Balustrade Type 5.3 - External Glass Balustrade (Bldg J)
BAL5.4	Balustrade Type 5.4 - External Glass Balustrade (Stair 5)
BAL6	Balustrade Type 6 - External Glass Balustrade (Bldg M L2)
BAL7	Balustrade Type 7 - External Screen to Rooftop plant (Bldg M)
BAL7.1	Balustrade Type 7.1 - External Balustrade to Amphitheatre
BAL8	Balustrade Type 8 - External Palisade (Bldg H/J)
BAL9	Balustrade Type 9 - External Screen to Rooftop plant (Bldg M)
BAL10	Balustrade Type 10 - External Screen to Rooftop plant (Bldg M)
SN1	Stair Nosing Type 1 - Cast in to Concrete Stair
SN2	Stair Nosing Type 2 - Nosing to timber stair
SN3	Stair Nosing Type 3 - (Adhesive) Nosing to existing stair
HR1	Hand Rail Type 1 - Stainless Steel Rail wall mount
HR2	Hand Rail Type 2 - Stainless Steel Rail floor mount
HR3	Hand Rail Type 3 - Stainless Steel Rail (Bldg M rooftop)
HR4	Hand Rail Type 4 - Stainless Steel Rail (Bldg M rooftop)
TGS1	Tactile Indicator Type 1 - SS 316 Tactile Indicators

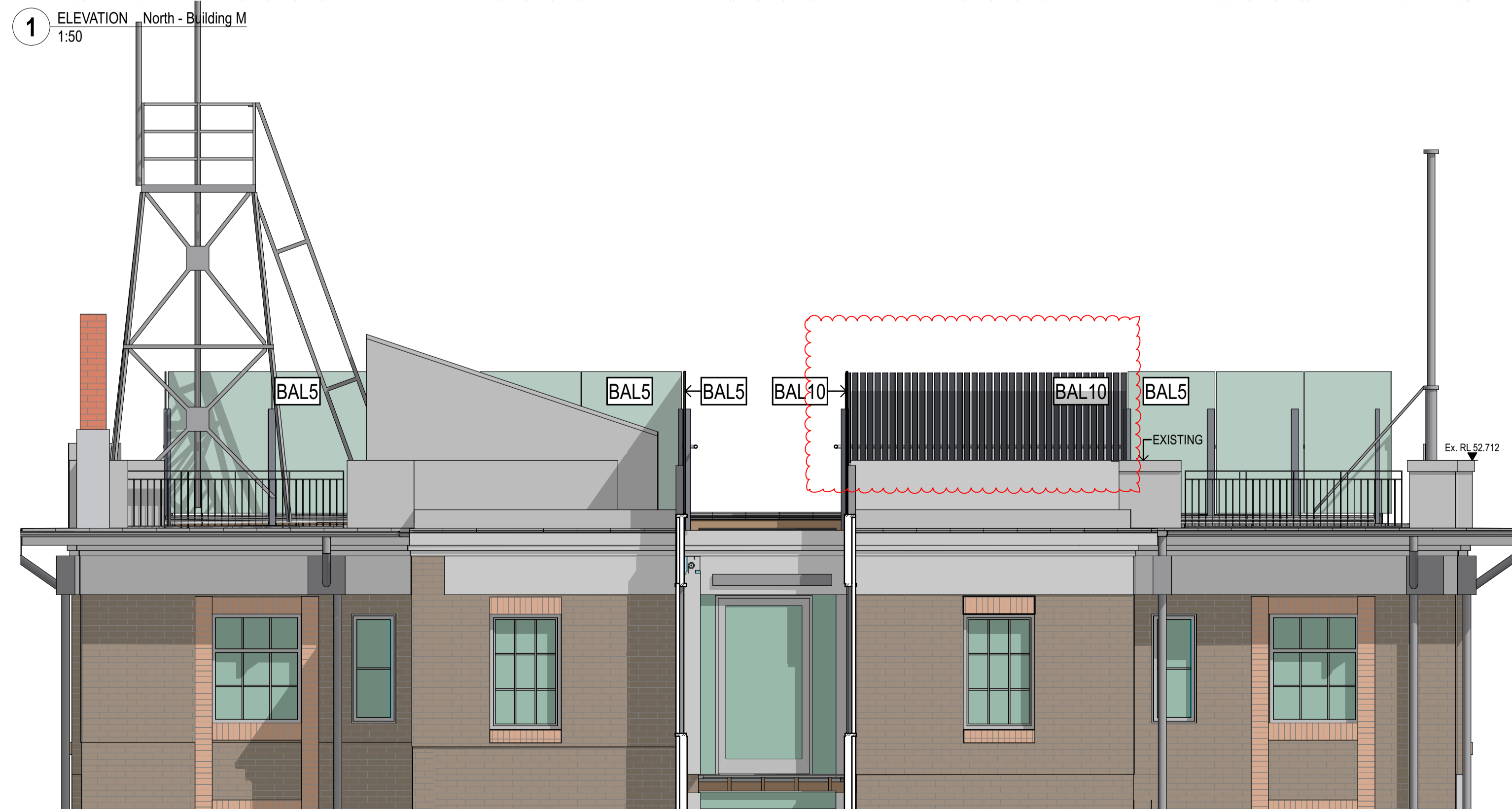
NOTE:
- All metal dimensions to structural engineers detail and specification.
- All glass dimensions to Facade Engineers specification.
- All exposed edges to be honed smooth.
- All existing dimensions are approximate only. To be checked on site.
- All painted metal surfaces to have a continuous layer of paint to the underside of all elements checked on site before installation.



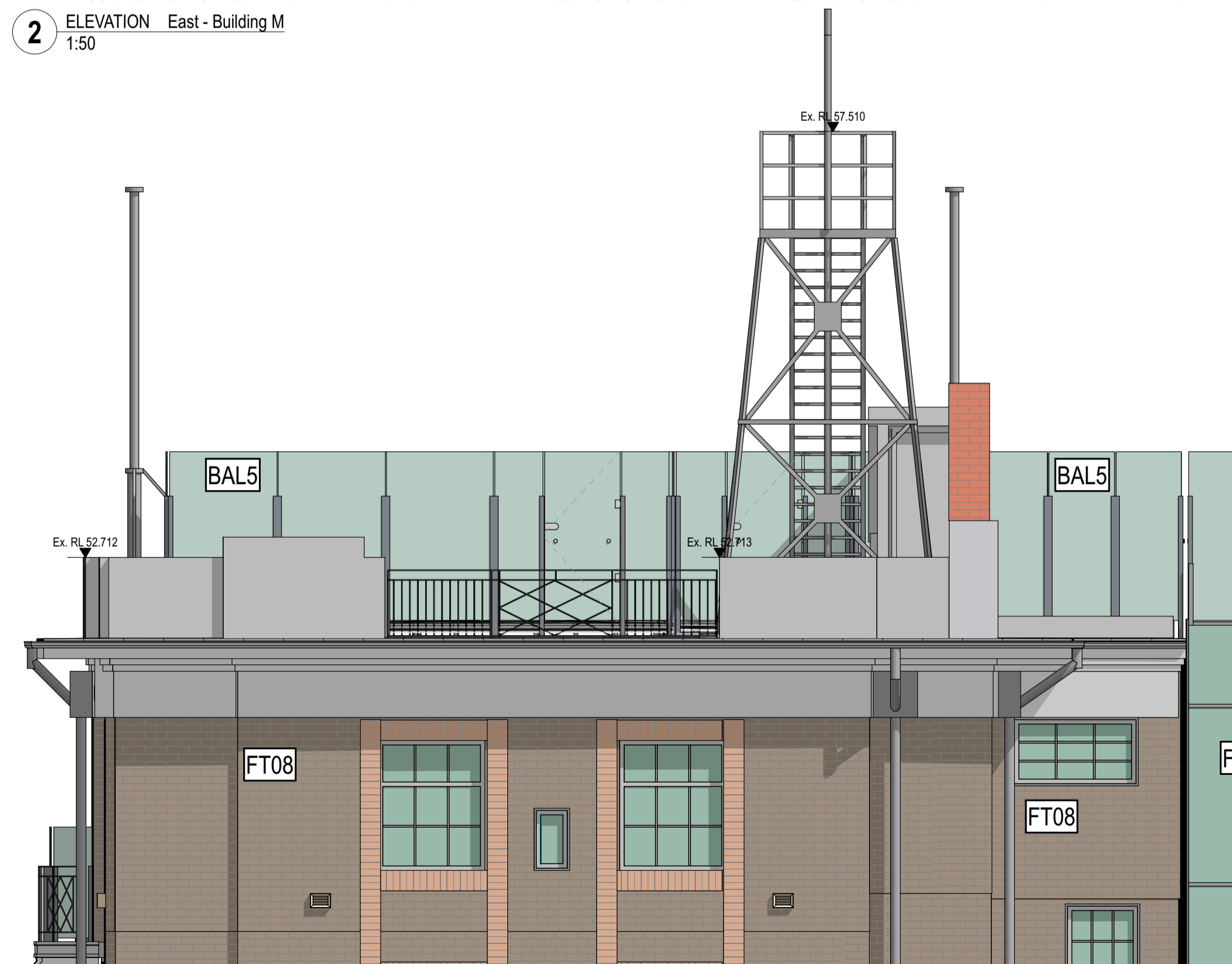
1 ELEVATION North - Building M
1:50



2 ELEVATION East - Building M
1:50



3 ELEVATION South - Building M
1:50



4 ELEVATION West - Building M
1:50

6 ELEVATION Building M L3 WEST
1:50

5 ELEVATION Building M L3 EAST
1:50

rev	date	name	by	chk
G	31/10/2022	For Coordination	PC	DB
F	14/11/2022	For Construction	AWY	DB
E	28/2/2022	For Construction	AWY	DB
D	16/2/2022	For Coordination	AWY	DB
C	14/2/2022	Amendments to suit consent modification	PC	DB
B	1/10/2021	For Construction	AWY	DB
A	11/9/2021	Issue for Crown Certificate 2	JB	DB
04	22/1/2021	Contract Set Issue	AWY	
03	21/10/2020	100% DD Documentation	AWY	
02	8/10/2020	DRAFT 100% DD Documentation Issue	AWY	
01	29/9/2020	Detailed Design Phase, 60% Documentation	AWY	

Fort Street Public School
Observatory Hill
Sydney NSW 2000

Balustrade Details
BAL5/6/9 Balustrade Type 5-7 & 9
Elevations - 1:50

Project Code
FSS

Sheet No.
AR_DRG_725001

Scale
1:50 @ A1

First Issued
29/9/2020

Rev
G

element	description
Balustrade:	B1 Clear Glazing. Refer to AR-DRG-50002
Balustrade Frame:	MTL2 Metal Type 2 - Steel
Colour:	Interthane - Dark Grey TBC
Handrail:	HR3 Metal Type 1 - SS 316
Finish:	MTL1 Metal Type 1 - SS 316
Fittings:	GLF4 Glass fitting 4 - Child Lock GLF5 Glass fitting 5 - Key mechanism GLF6 Glass fitting 7 - Glass to Wall Hinge
Finish:	MTL1 Metal Type 1 - SS 316
Spandrel:	Solid seraphic frit to Surface #2
Colour:	to match ALM2 TBC

- Key Plan**
- All dimensions and existing conditions shall be checked and verified by the contractor before proceeding with the work.
 - All levels relative to 'Australian Height Datum'.
 - Do not scale drawings.
 - Use figured dimensions only.

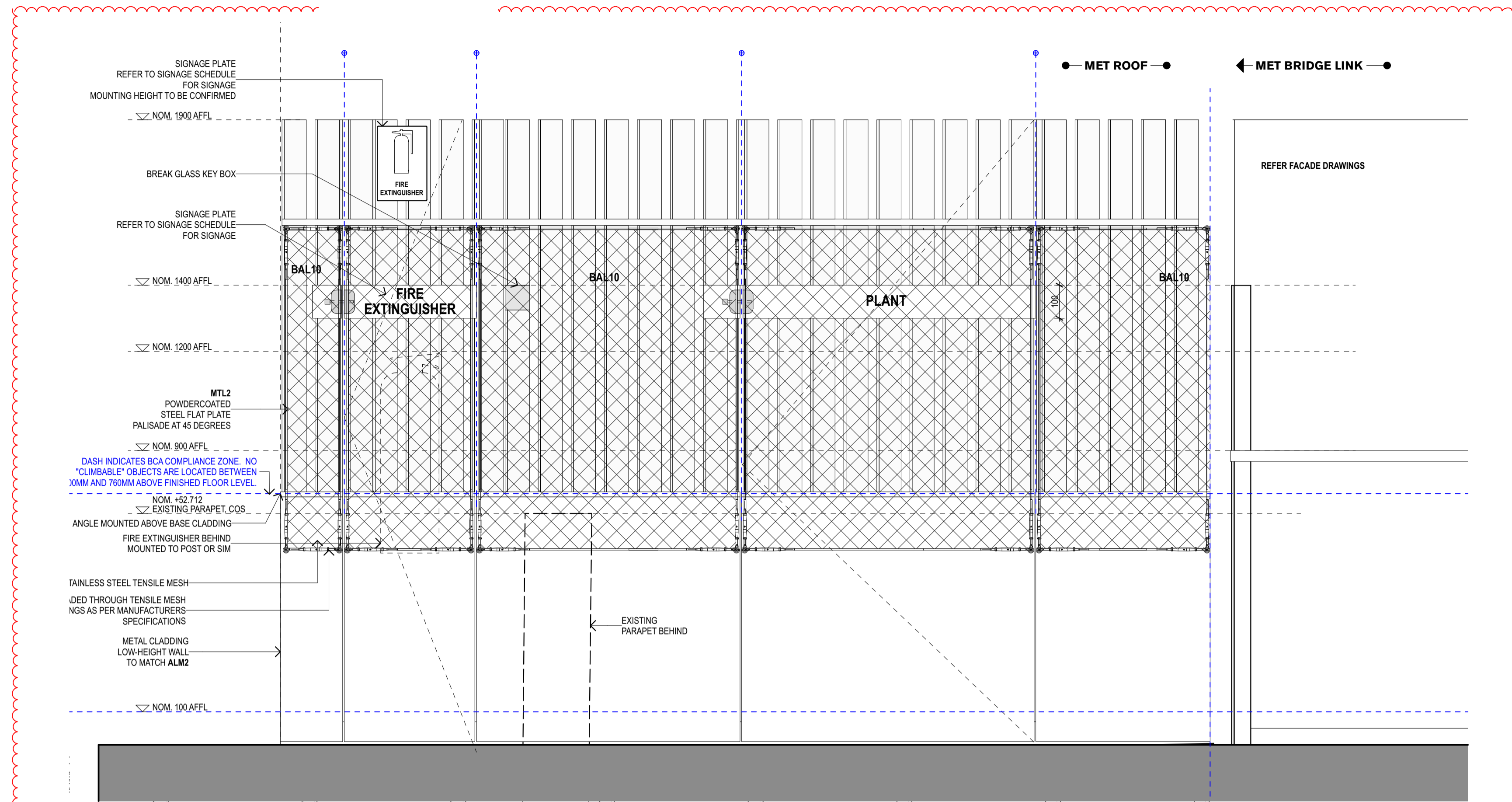
Legend



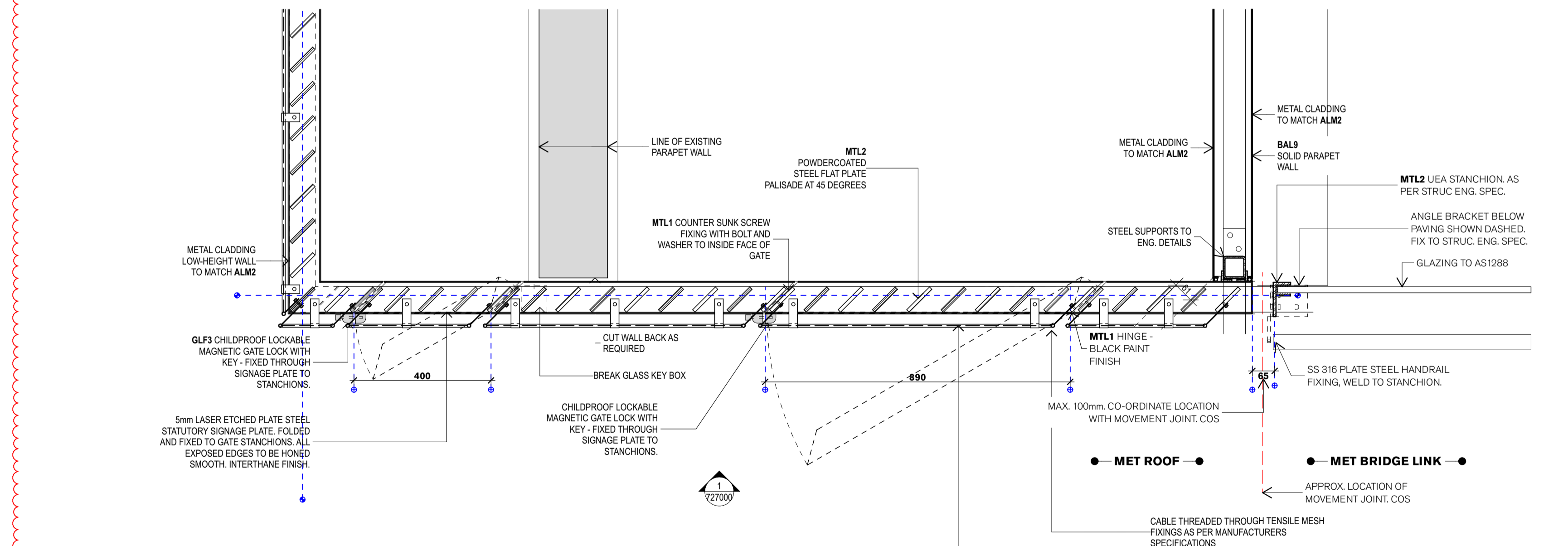
Stairs + Balustrades Legend

code	description
BAL1	Balustrade Type 1 - Metal Mesh
BAL2	Balustrade Type 2 - Metal Screen
BAL3	Balustrade Type 3 - Metal Palisade
BAL4	Balustrade Type 4 - Infill to Existing Balustrade Stair 2
BAL5	Balustrade Type 5 - External Glass Balustrade (Bldg M)
BALS.2	Balustrade Type 5.2- External Glass Balustrade (Bridge)
BALS.3	Balustrade Type 5.3- External Glass Balustrade (Bldg J)
BALS.4	Balustrade Type 5.4- External Glass Balustrade (Stair 5)
BAL6	Balustrade Type 6 - External Glass Balustrade (Bldg M L2)
BAL7	Balustrade Type 7 - External Screen to Rooftop plant (Bldg M)
BAL7.1	Balustrade Type 7.1 - External Balustrade to Amphitheatre
BAL8	Balustrade Type 8 - External Palisade (Bldg H/J)
BAL9	Balustrade Type 9 - External Screen to Rooftop plant (Bldg M)
BAL10	Balustrade Type 10 - External Screen to Rooftop plant (Bldg M)
SN1	Stair Nosing Type 1 - Cast in to Concrete Stair
SN2	Stair Nosing Type 2 - Nosing to timber stair
SN3	Stair Nosing Type 3 - (Adhesive) Nosing to existing stair
HR1	Hand Rail Type 1 - Stainless Steel Rail wall mount
HR2	Hand Rail Type 2 - Stainless Steel Rail floor mount
HR3	Hand Rail Type 3 - Stainless Steel Rail (Bldg M rooftop)
HR4	Hand Rail Type 4 - Stainless Steel Rail (Bldg M rooftop)
TGS1	Tactile Indicator Type 1 - SS 316 Tactile Indicators

- NOTE:**
- All metal dimensions to structural engineers detail and specification.
 - All glass dimensions to Facade Engineers specification.
 - All exposed edges to be honed smooth.
 - All existing dimensions are approximate only. To be checked on site.
 - All painted metal surfaces to have a continuous layer of paint to the underside of all elements checked on site before installation.



2 ELEVATION PLANT ENCLOSURE - WEST
1:10



1 PLAN PLANT ENCLOSURE - WEST
1:10

rev	date	name	by	chk
D	31/10/2022	For Coordination	PC	DB
C	14/11/2022	For Construction	AWY	DB
B	6/4/2022	For Construction	AWY	DB
A	18/3/2022	For Construction	AWY	DB

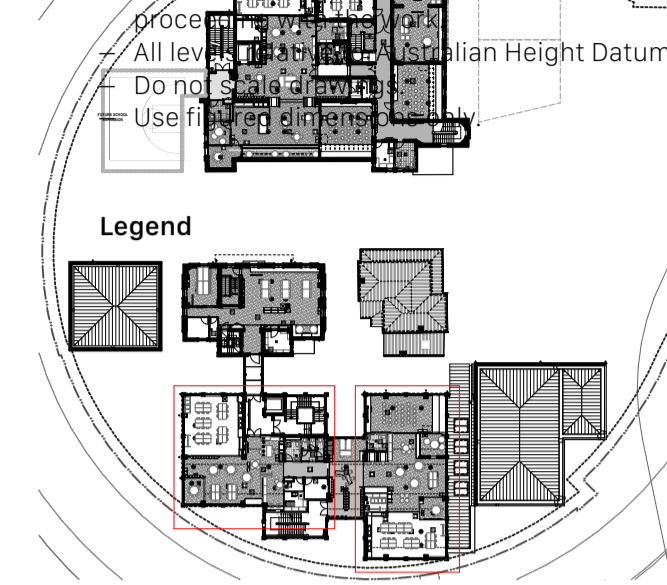
Fort Street Public School
Observatory Hill
Sydney NSW 2000

Balustrade Details Scale
BAL10 Balustrade Type 10 - Details 1:10 @ A1
1:10

Project Code First Issued
FSS 18/3/2022

Sheet No. Rev
AR_DRG_727003 D

Key Plan
All dimensions and elevations shall be checked on site by the contractor before proceeding.
All levels are relative to the Australian Height Datum.
Do not use finished ground levels.
Use finished ground levels.



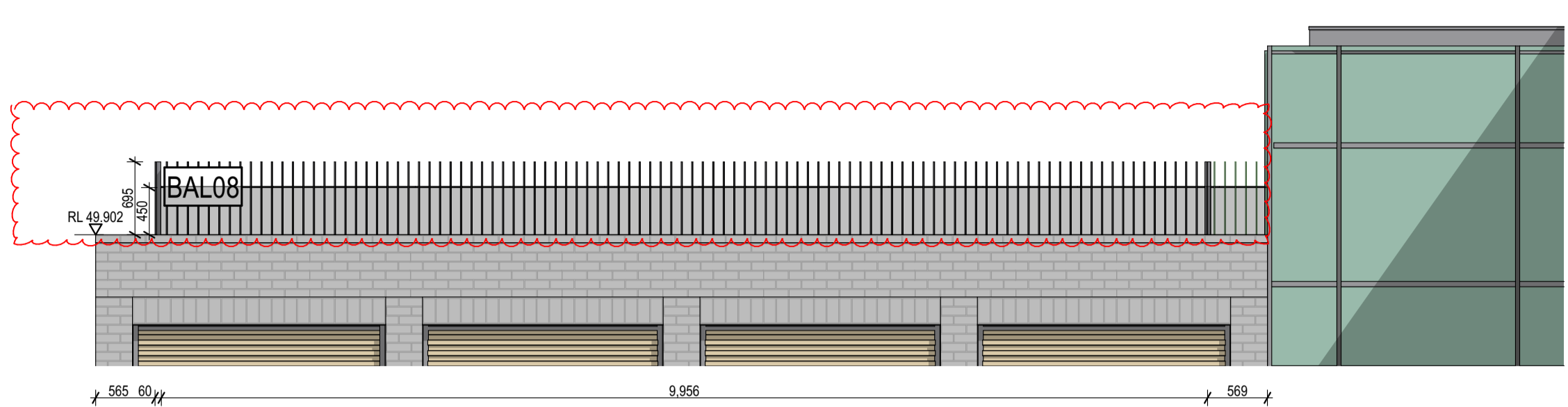
Stairs + Balustrades Legend

code	description
BAL1	Balustrade Type 1 - Metal Mesh
BAL2	Balustrade Type 2 - Metal Screen
BAL3	Balustrade Type 3 - Metal Palisade
BAL4	Balustrade Type 4 - Infill to Existing Balustrade Stair 2
BAL5	Balustrade Type 5 - External Glass Balustrade (Building M)
BAL6	Balustrade Type 6 - External Glass Balustrade (Building M L2)
BAL7	Balustrade Type 7 - External Screen to Rooftop plant (Building M)
BAL7.1	Balustrade Type 7.1 - External Balustrade to Amphitheatre
BAL8	Balustrade Type 8 - External Palisade (Building H/J)
BAL9	Balustrade Type 9 - Glass Balustrade to Stair 9
SN1	Stair Nosing Type 1 - Cast in to Concrete Stair
SN2	Stair Nosing Type 2 - Nosing to timber stair
HR1	Hand Rail Type 1 - Stainless Steel Rail wall mount
HR2	Hand Rail Type 2 - Stainless Steel Rail floor mount
HR3	Hand Rail Type 3 - Stainless Steel Rail (Building M rooftop)
HR4	Hand Rail Type 4 - Stainless Steel Rail (Building M rooftop)
TGS1	Tactile Indicator Type 1 - Discreet SS 316 Tactile Indicators

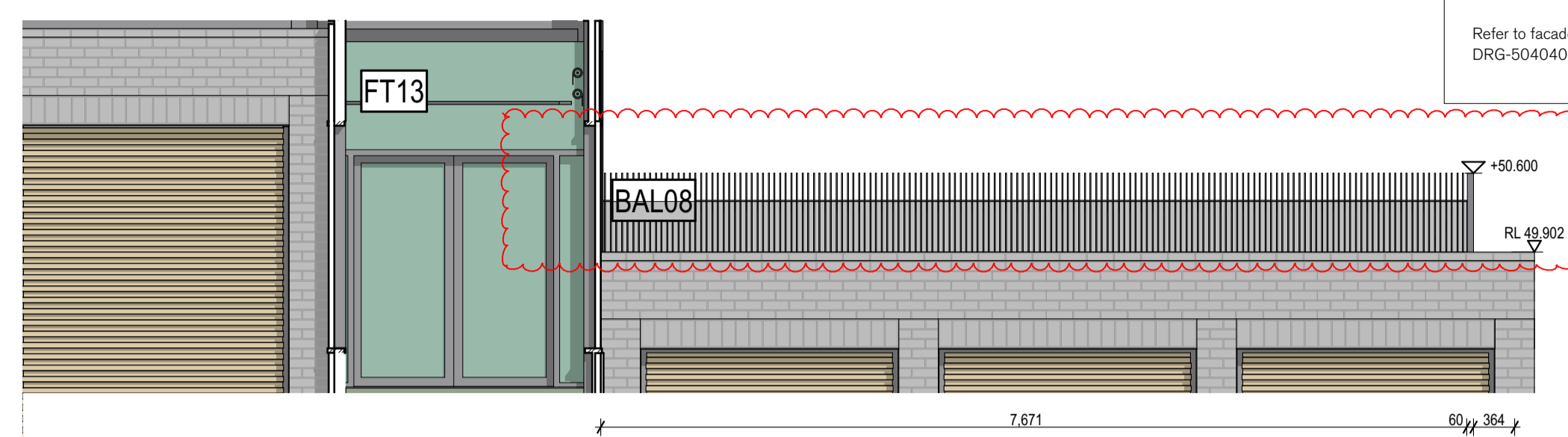
NOTE:
- All metal dimensions to structural engineers detail and specification.
- All glass dimensions to Facade Engineers specification.
- All exposed edges to be honed smooth.
- All existing dimensions are approximate only. To be checked on site.
- All painted metal surfaces to have a continuous layer of paint to the underside of all elements checked on site before installation.

element	description
BAL8 Balustrade Type 8	
Balustrade:	MTL2 Metal Type 2
Balustrade Frame:	MTL2 Metal Type 2
Colour:	Interthane finish - Black - TBC

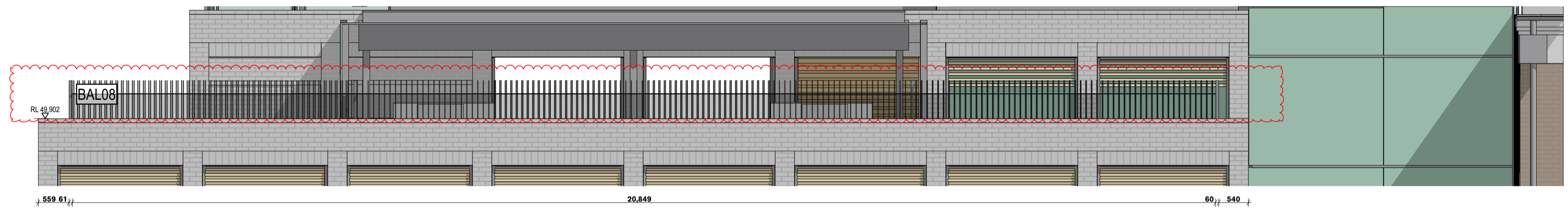
Refer to facade detail package for plan and section details. AR-DRG-504040 and AR-DRG-504002



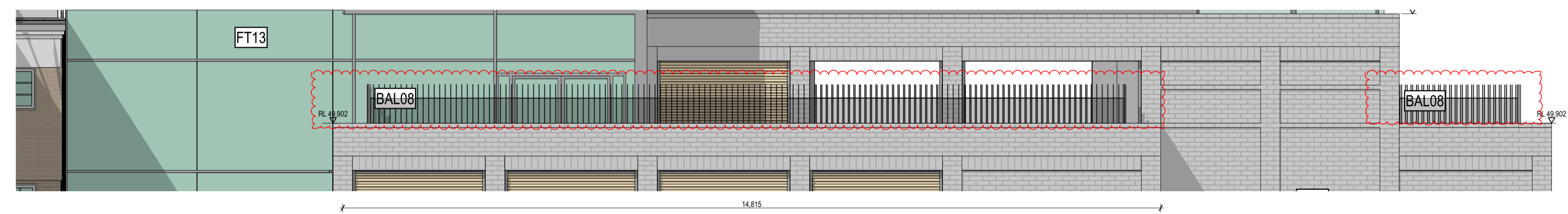
1 ELEVATION BAL 08 - North Building J
1:50



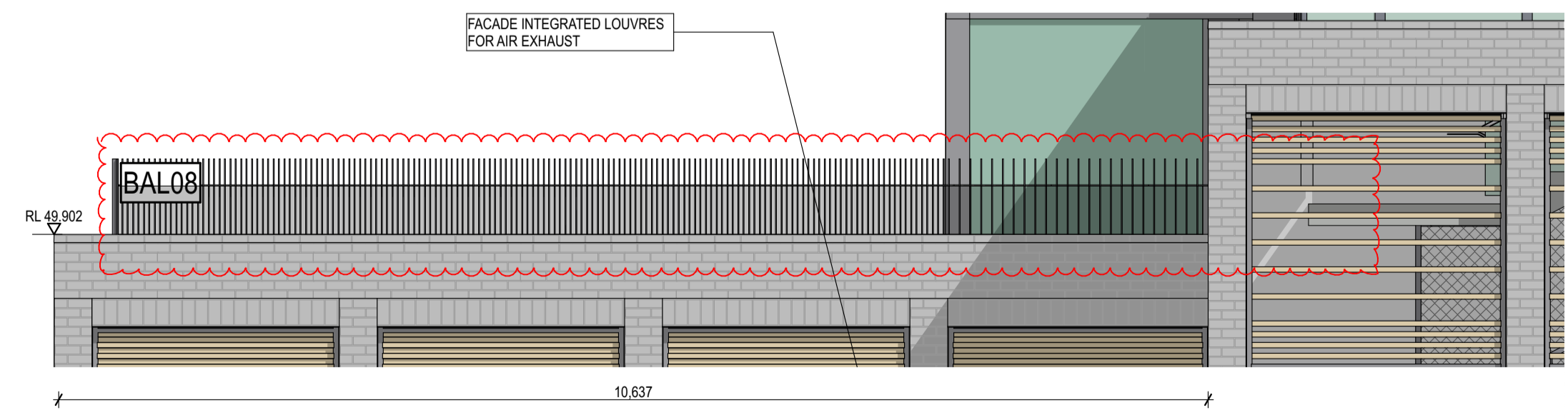
2 ELEVATION BAL 08 - North Building H
1:50



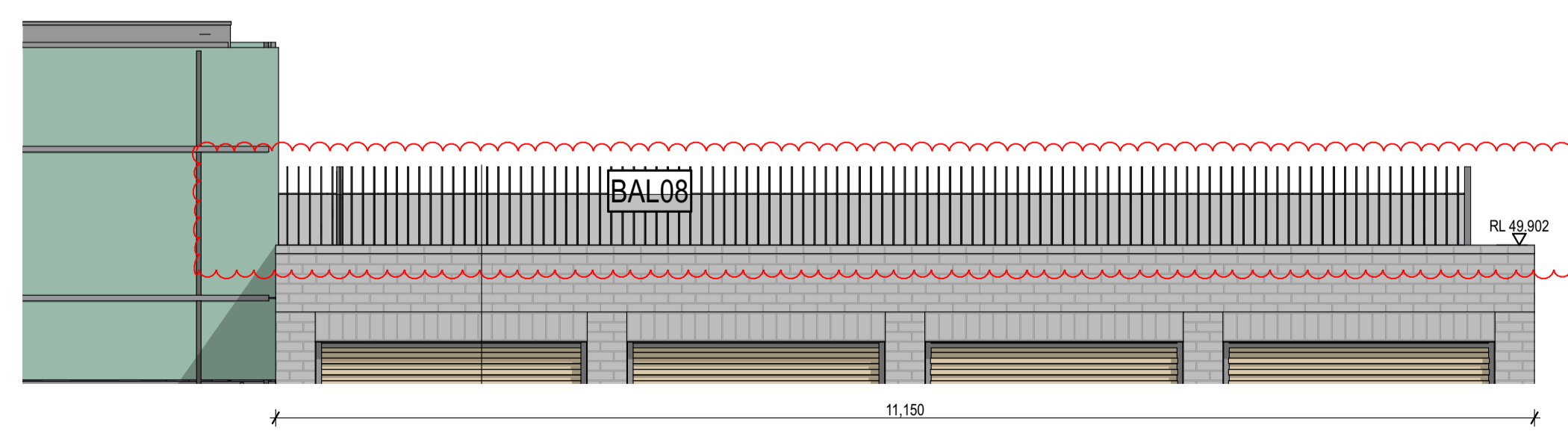
3 ELEVATION BAL 08 - East Building H
1:50



4 ELEVATION BAL 08 - West Building J / H
1:50



5 ELEVATION BAL 08 - South Building J
1:50



6 ELEVATION BAL 08 - South Building H
1:50

rev	date	name	by	chk
D	31/10/2022	For Coordination	PC	DB
C	14/2/2022	Amendments to suit consent modification	PC	DB
B	1/10/2021	For Construction	AWY	DB
A	11/9/2021	Issue for Clean Certificate 2	JB	DB
03	22/1/2021	Contract Set Issue	AWY	
02	21/10/2020	100% DD Documentation	AWY	
01	29/9/2020	Detailed Design Phase, 60% Documentation	AWY	

Fort Street Public School
Observatory Hill
Sydney NSW 2000

Balustrade Details
BAL8 Balustrade Type 8 Elevations
1:50 @ A1
1:50

Project Code
FSS

First Issued
29/9/2020

Sheet No.	Rev
AR_DRG_728001	D