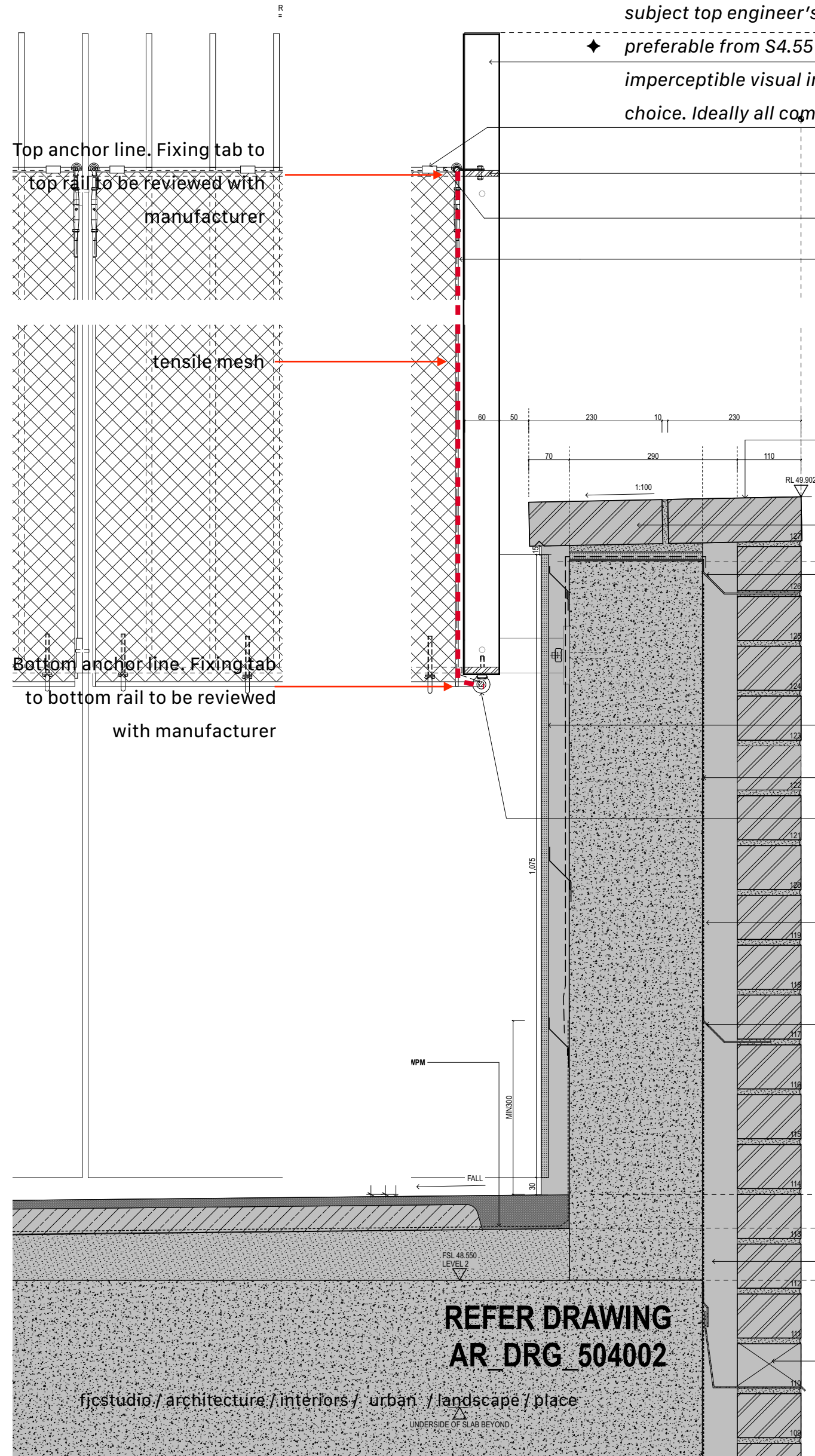


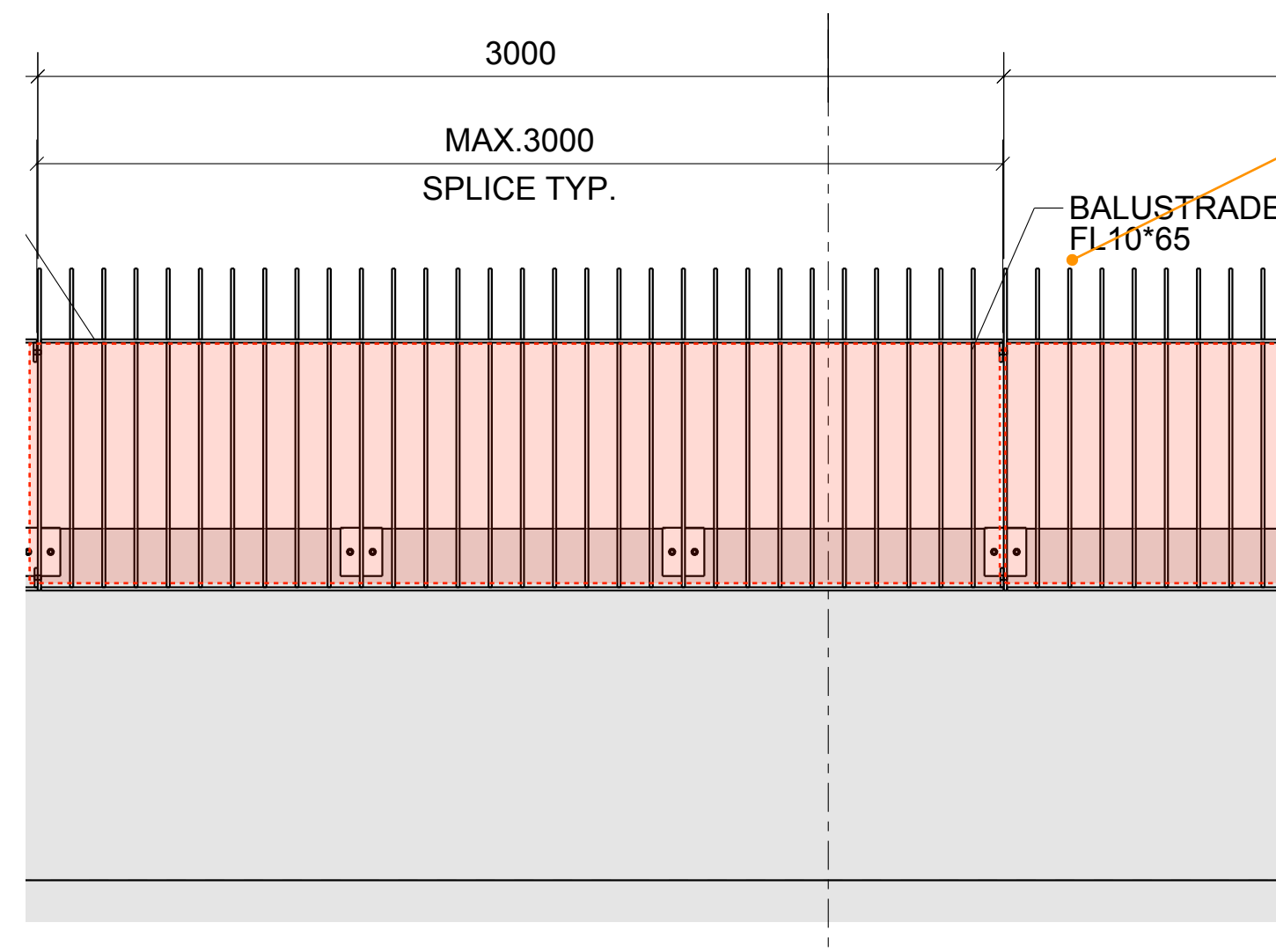
# Upgrade Option - Tensile Mesh - Building JH

Type: Webnet Tensile 316 SS. Mesh. 1.5mm Gauge, 25mm Max Aperture. Vertical 'V' Pattern, 50° Mesh Angle

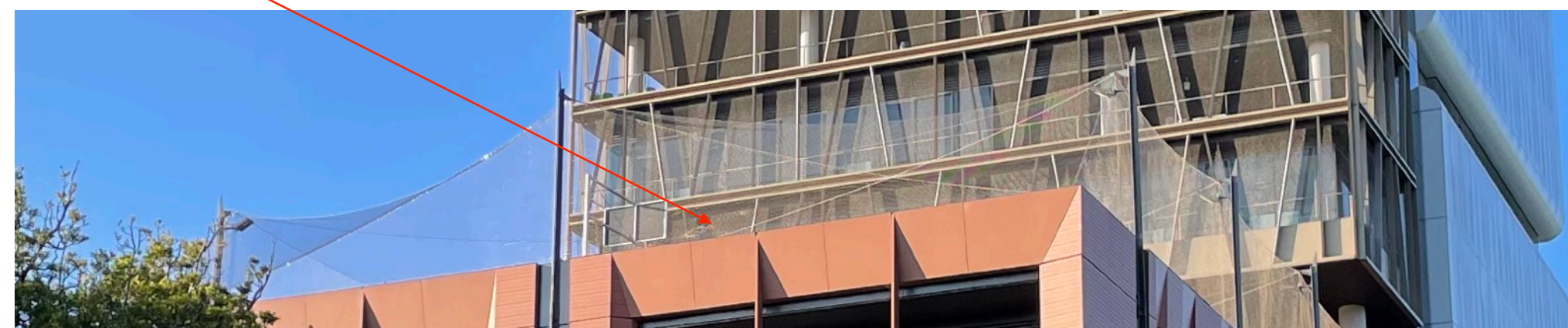
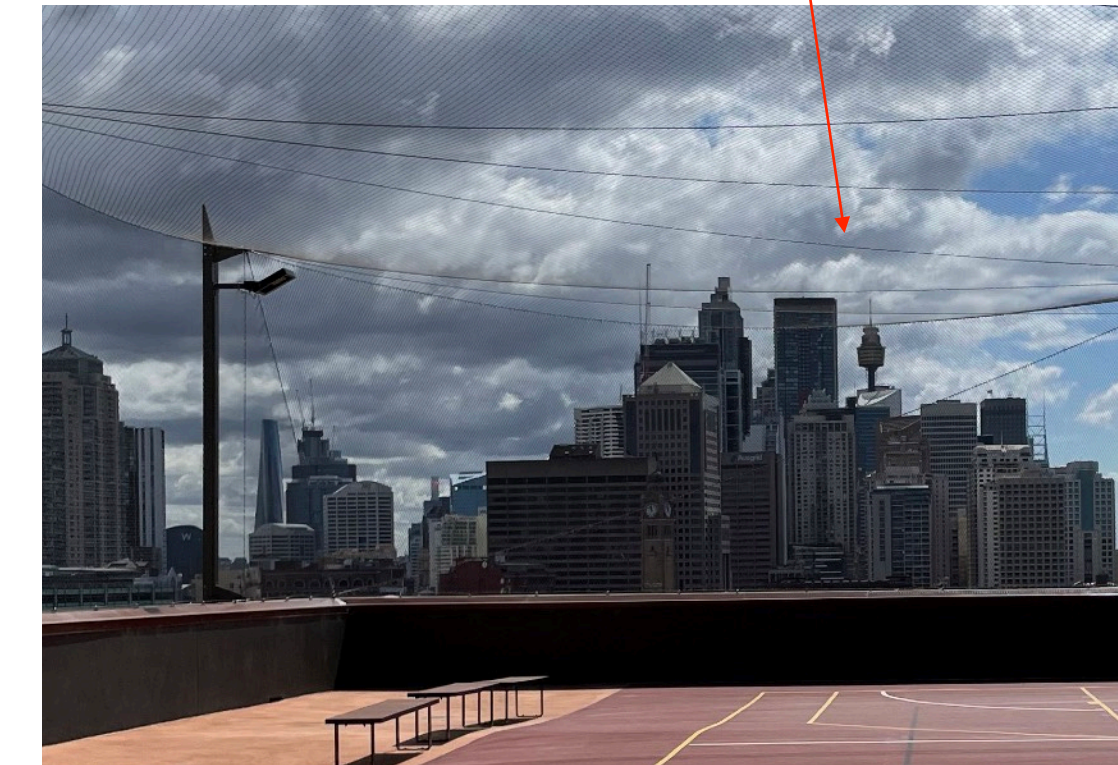
- ◆ Loadbearing and wind load impacts negligible, subject top engineer's review
- ◆ preferable from S4.55 implications as negligible / imperceptible visual impacts pending material choice. Ideally all components 316 SS.



Example of Playcourt Webnet mesh

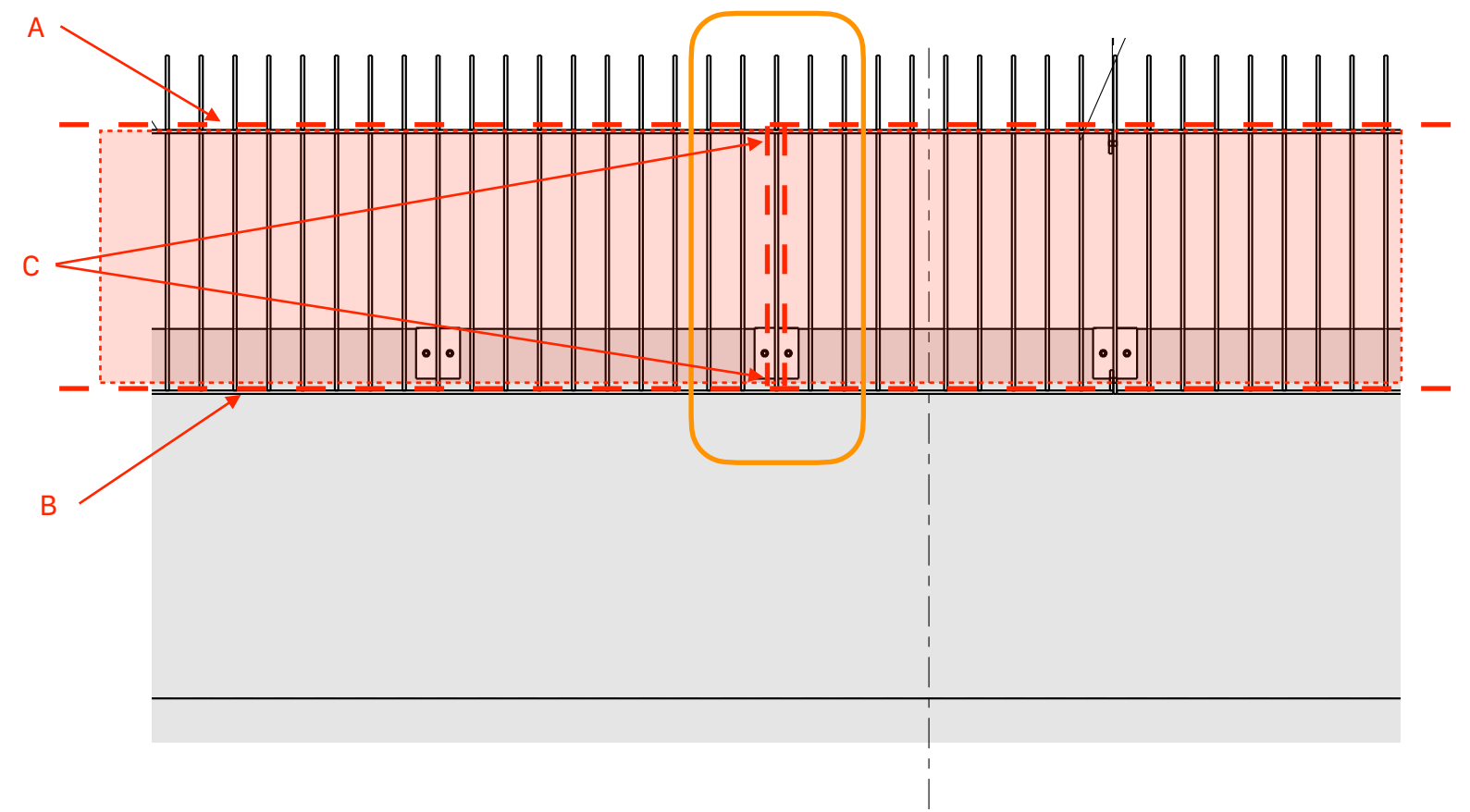
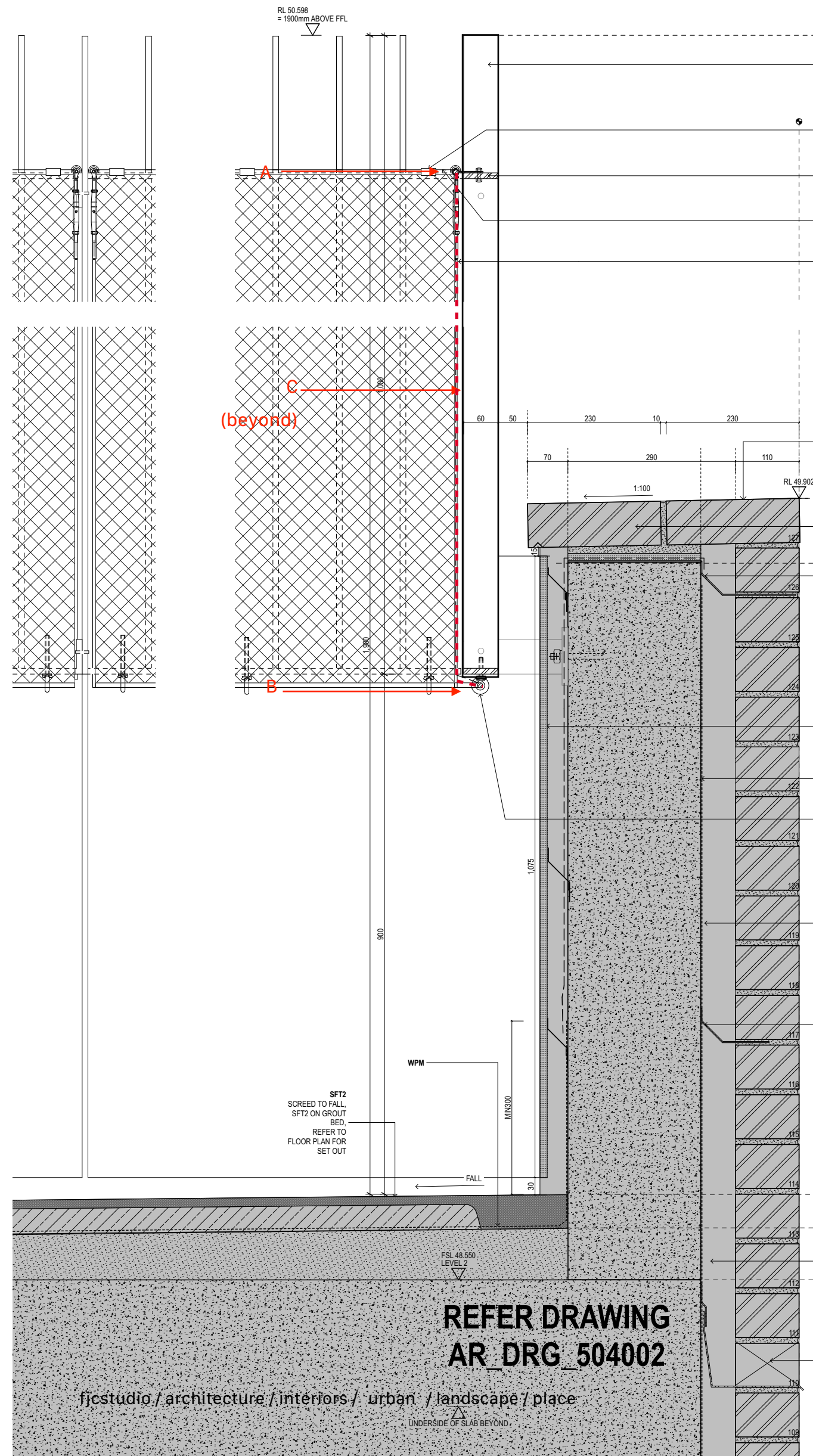


Example of Playcourt Webnet mesh



Inner Sydney High School reference photos - Tower playcourt Webnet mesh

A substantial range of fixings is available that could deal with angles of fixings, substrates, etc. However a review is required with manufacturer. Some examples:



A & B - options

C only - options

