

Our ref: SSD-10340-PA-97

Shane Lee  
Assistant Project Director  
Department of Education NSW  
C/o School Infrastructure NSW  
Level 8, 259 George Street  
SYDNEY, NSW 2000

Attn: Kendal Caynes ([kendal.caynes1@det.nsw.edu.au](mailto:kendal.caynes1@det.nsw.edu.au))

13/03/2024

---

**Fort Street Public School (SSD-10340)**

**Additional Safety Protection Structures on the Trafficable Rooftops, Conditions E20, A15**

Dear Mr Lee

I refer to your documentation regarding safety protection structures on the trafficable rooftops submitted to the Planning Secretary in accordance with condition E20 Schedule 2 of the project Development Consent for Fort Street Public School (SSD-10340).

I note the safety protection structures documentation has been:

- reviewed by the Applicant, and no issues were raised to the Department;
- prepared in consultation with a suitably qualified and experienced Heritage consultant and Heritage NSW; and
- prepared for the installation of safety protection to the metal balustrade located on level 2 of building J and building H, as well as building M (MET) level 3 rooftop area.

I also note that condition E20 Safety protection structures on the trafficable rooftops was previously acknowledged by the Department on 05 September 2023 under PA-76.

Accordingly, as nominee of the Planning Secretary, I approve the installation of the mesh behind the completed metal balustrade to buildings H and J at Level 2 play areas and the MET at level 3 rooftop area, under condition A15 of SSD-10340.

Please note that if there are any inconsistencies between the submitted documentation and the conditions of consent, the conditions will prevail.

Also, please make the additional safety protection documentation available for public access on the project website as per condition A23.

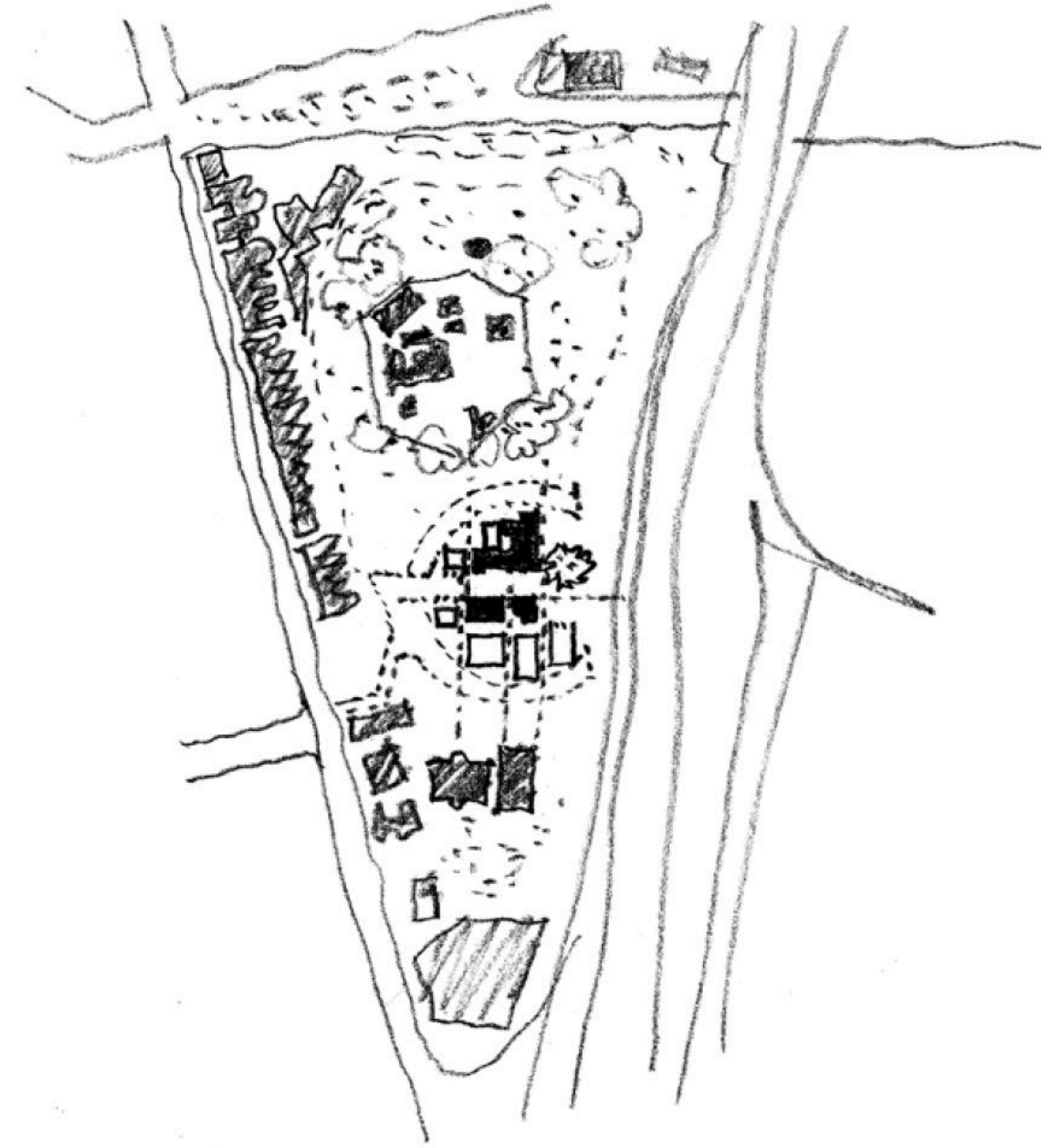
If you have any questions or wish to discuss the matter further, please contact Jeremy Martin at [jeremy.martin@dpie.nsw.gov.au](mailto:jeremy.martin@dpie.nsw.gov.au).

Yours sincerely

A handwritten signature in black ink, appearing to read "D Crinnion". The signature is written in a cursive style with a large initial "D" and a smaller "C" followed by "rinnion".

Dominic Crinnion  
Director  
Infrastructure Management

As nominee of the Planning Secretary



Fort Street Public School  
Building H + J Rooftop and MET Rooftop Balustrade Upgrade  
Proposal

31/10/23

# Building J/H Rooftop and MET rooftop Balustrade Upgrade

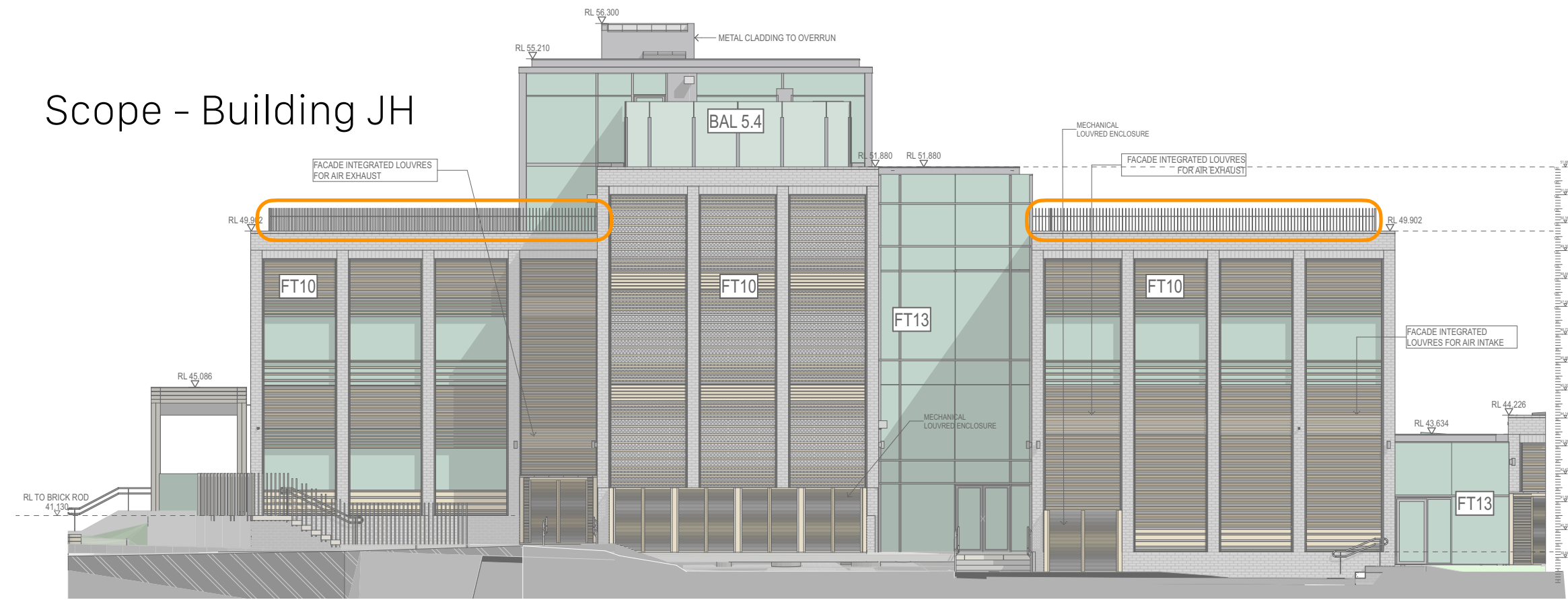
## Brief

fjc understands that an upgrade is required to augment child-proofing of the rooftop metal balustrades to Bldgs H + J at Level 2 play areas and MET Level 3 mechanical enclosure areas, over and above the briefing, compliance requirements and agreed detailing.

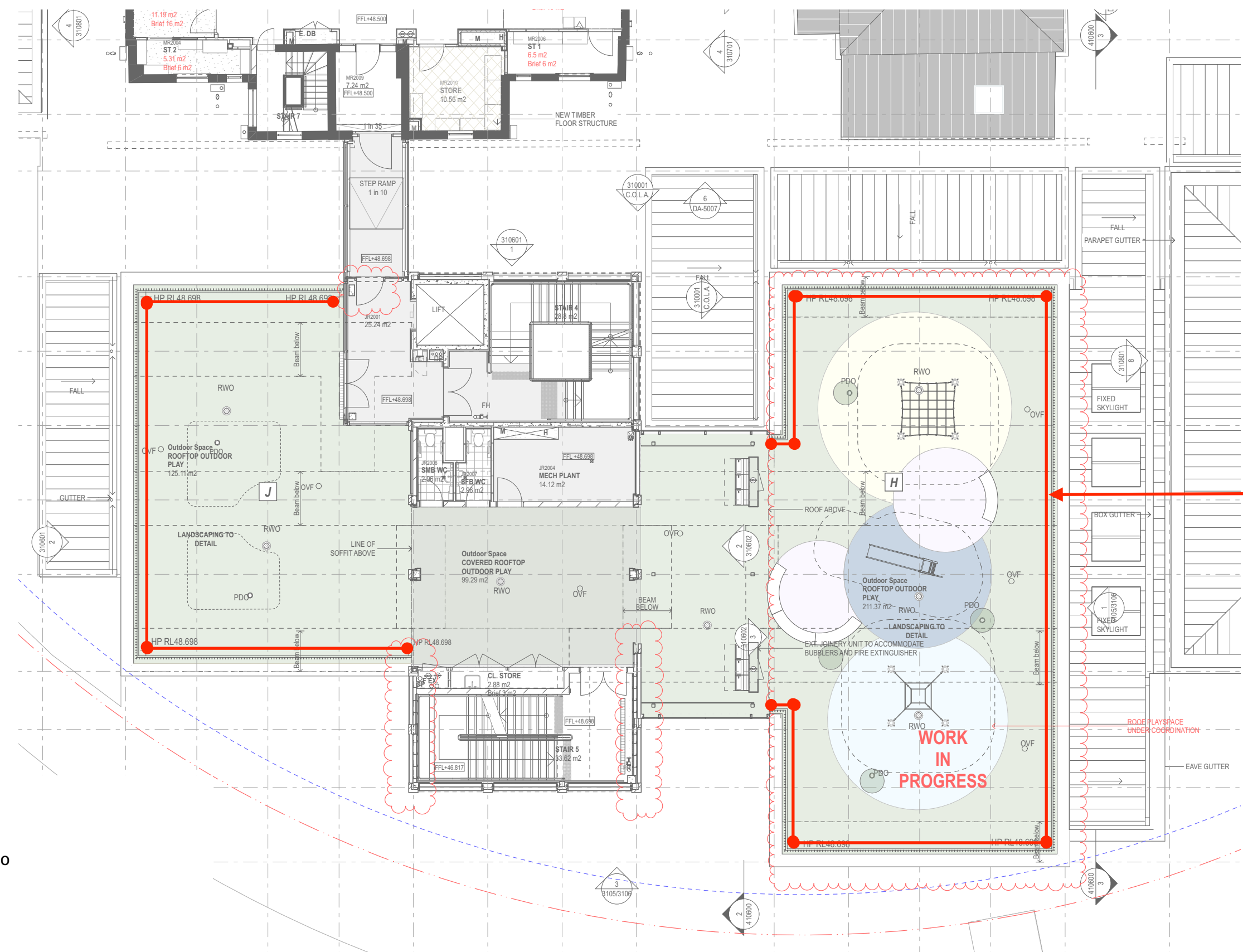
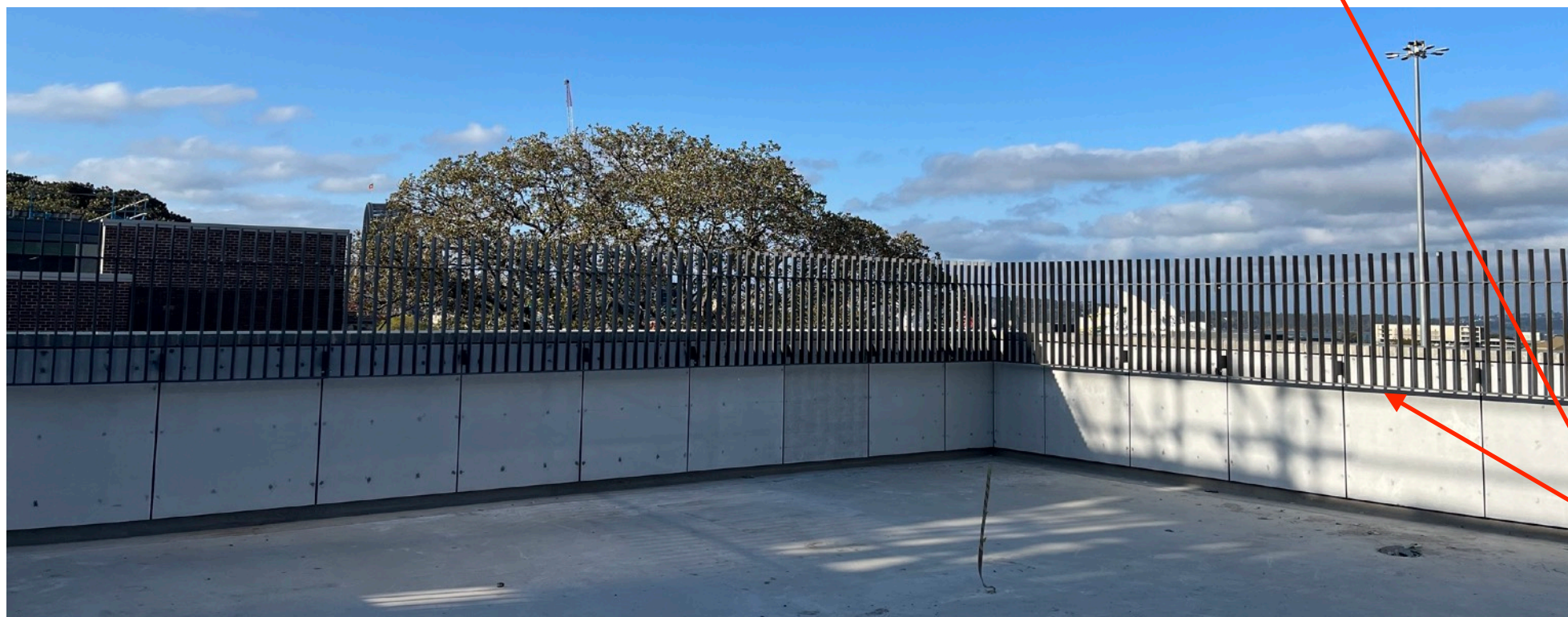
Noting that the works to this balustrade are essentially complete, the preference is to have a system that is readily adaptable to the installation with a minimum amount of works required to accommodate the upgrade proposal. Project-specific considerations are:

- upgrade to Safety in Design to negate bottom rail
- appropriateness of detail and relative simplicity of attaching to as-built palisades
- procurement, logistics, cost and efficiency constraints
- consideration for transparency of augmentation, and implications for merits of the planning approval. Including transparency of the palisades, perception of bulk, and heights relative to the prominent MET fabric.

## Scope - Building JH



3 ELEVATION SOUTH  
1:100



extent of BAL08 balustrade

address bottom rail to remove climbing risk

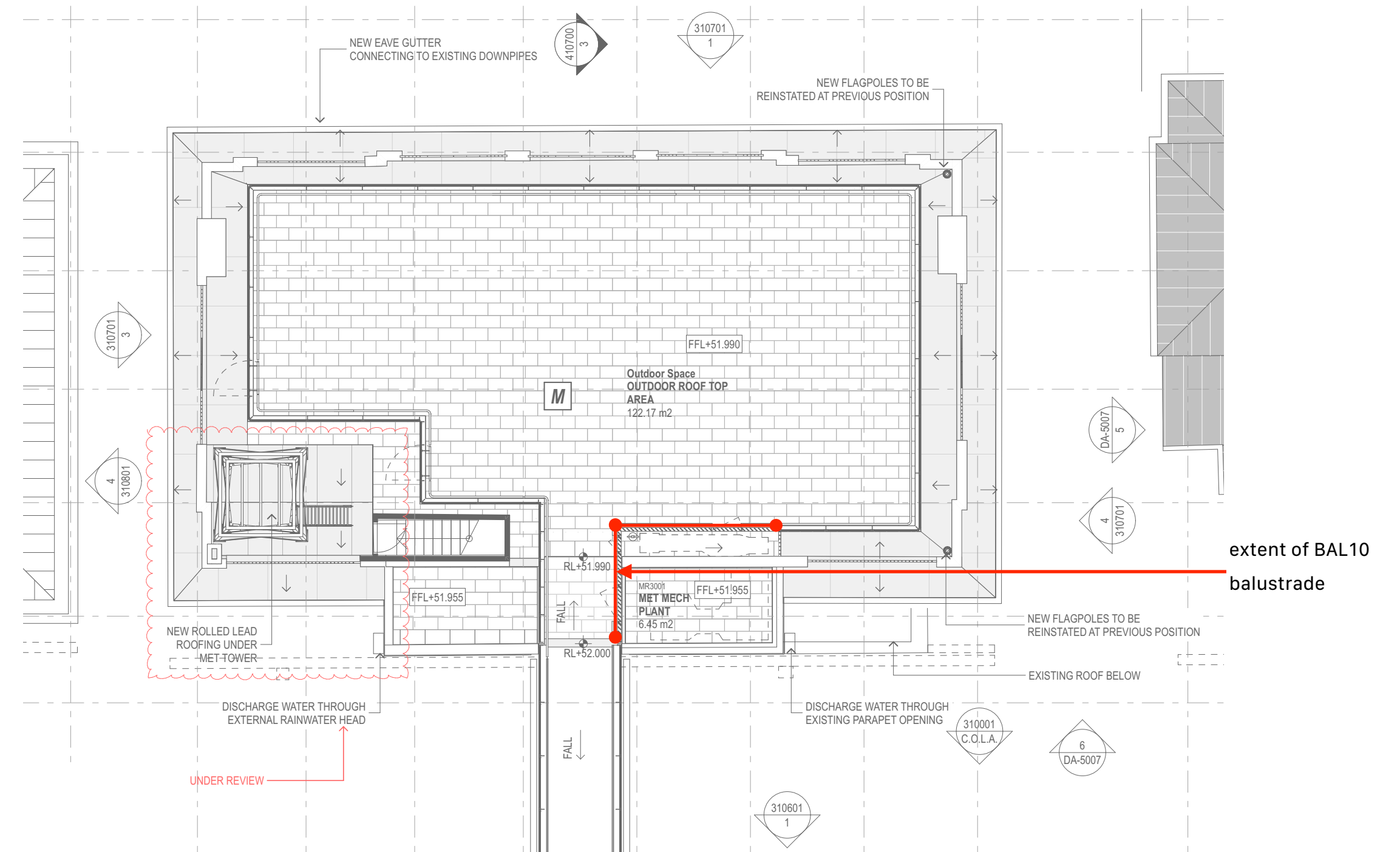
# Building J/H Rooftop and MET rooftop Balustrade Upgrade



## Scope - Met roof top

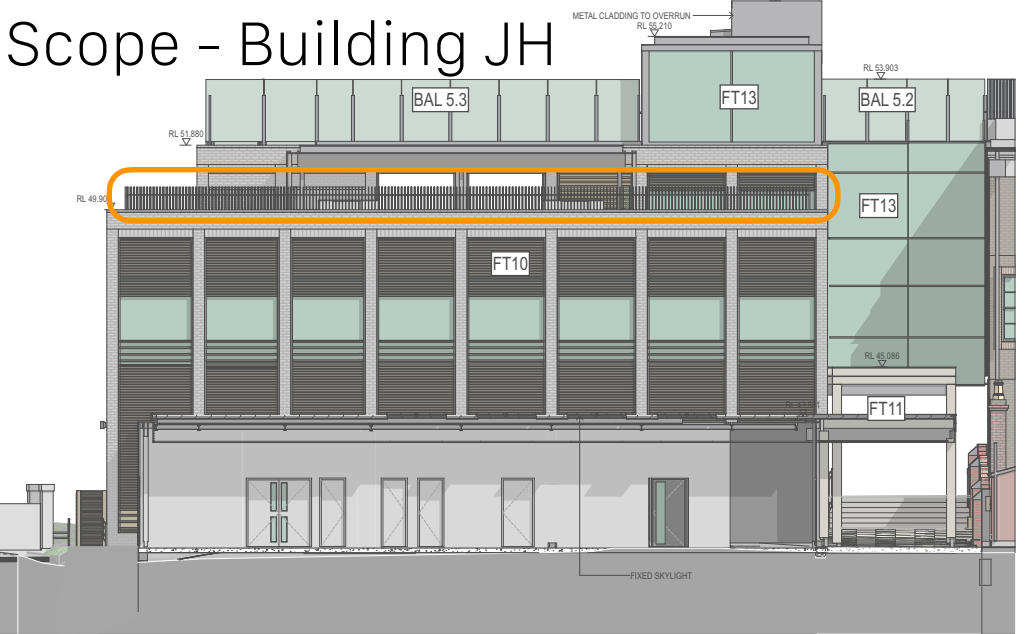


3 ELEVATION South - Building M  
1:50

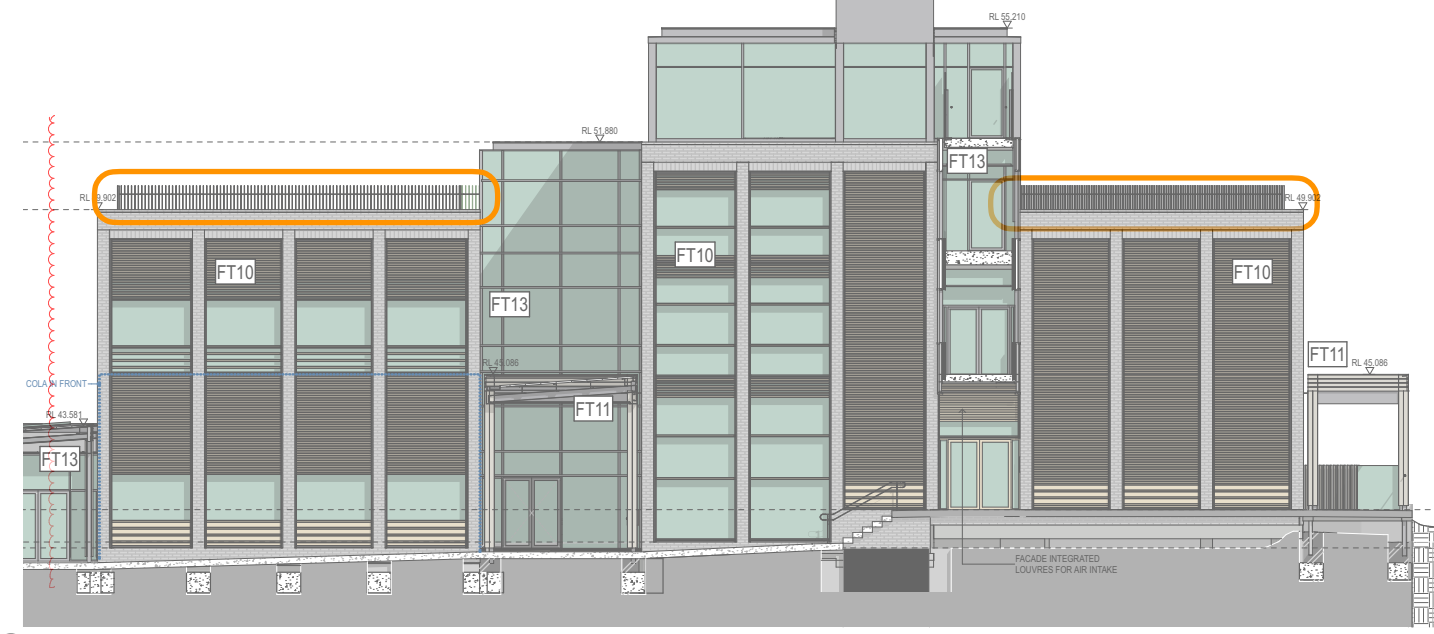


address bottom rail to  
remove climbing risk

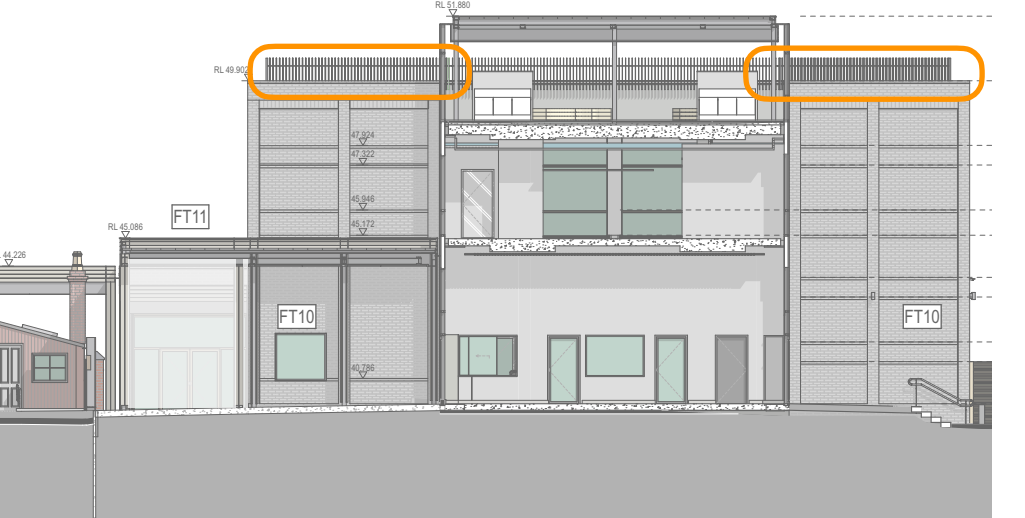
# Scope - Building JH



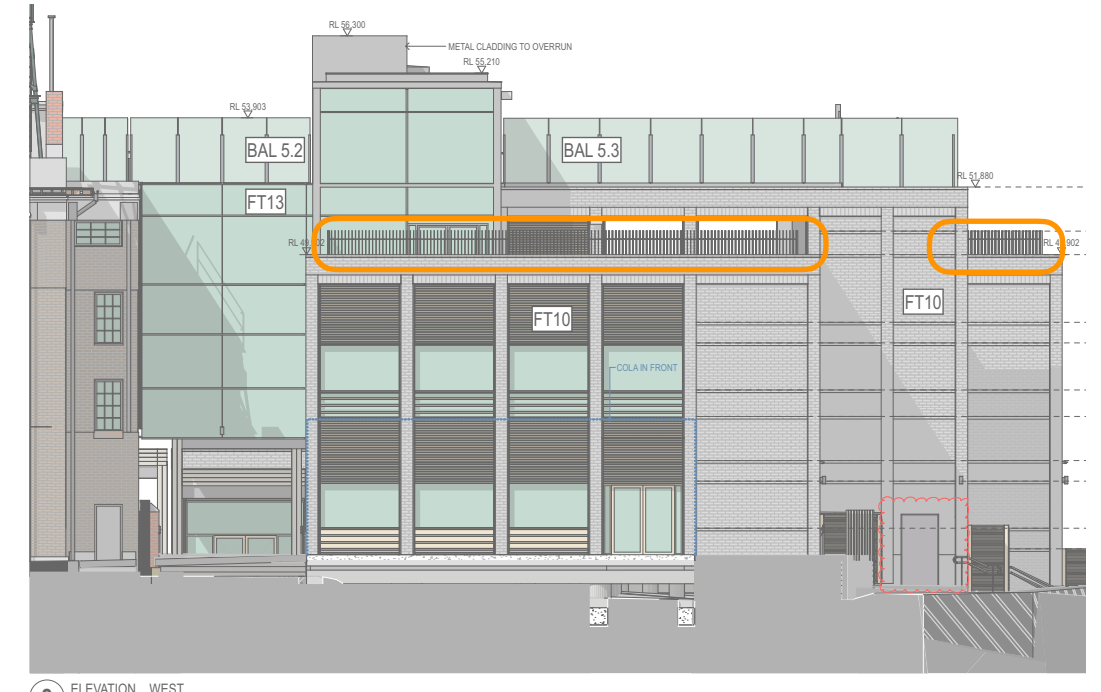
1 ELEVATION EAST  
1:100



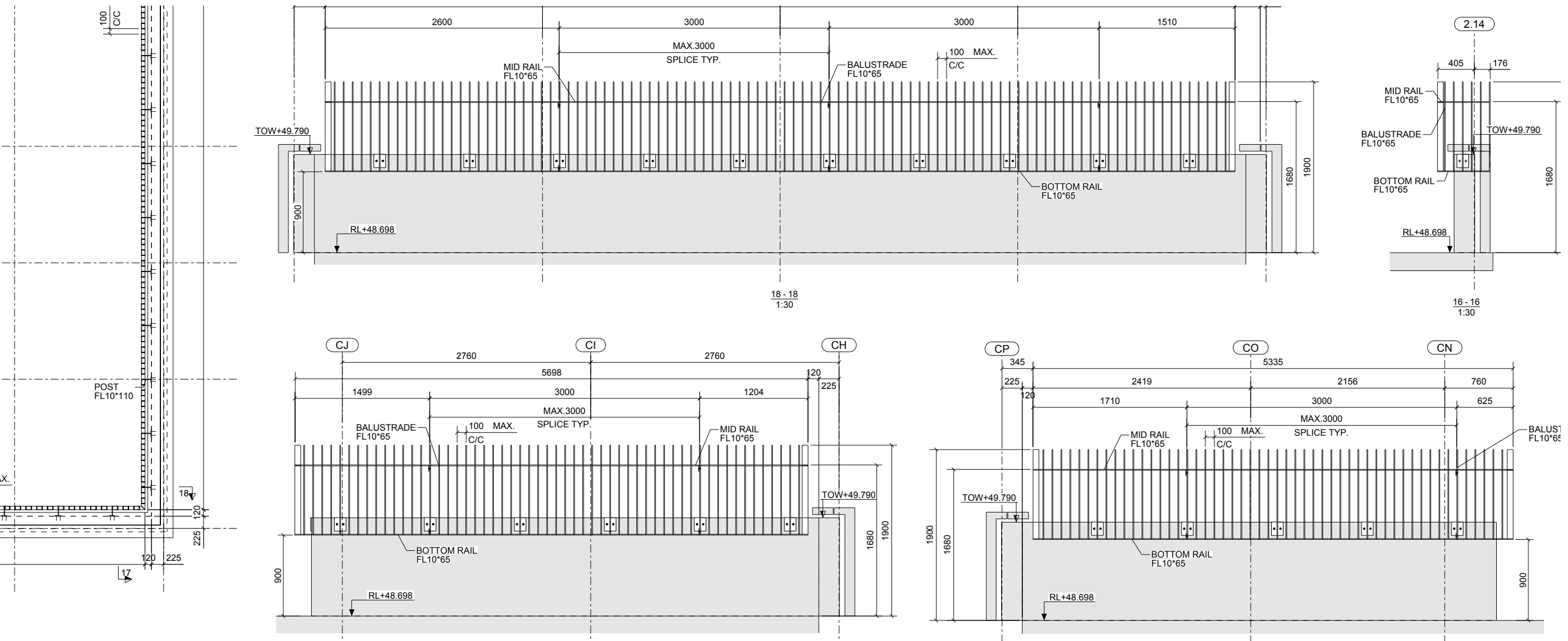
1 ELEVATION NORTH  
1:100



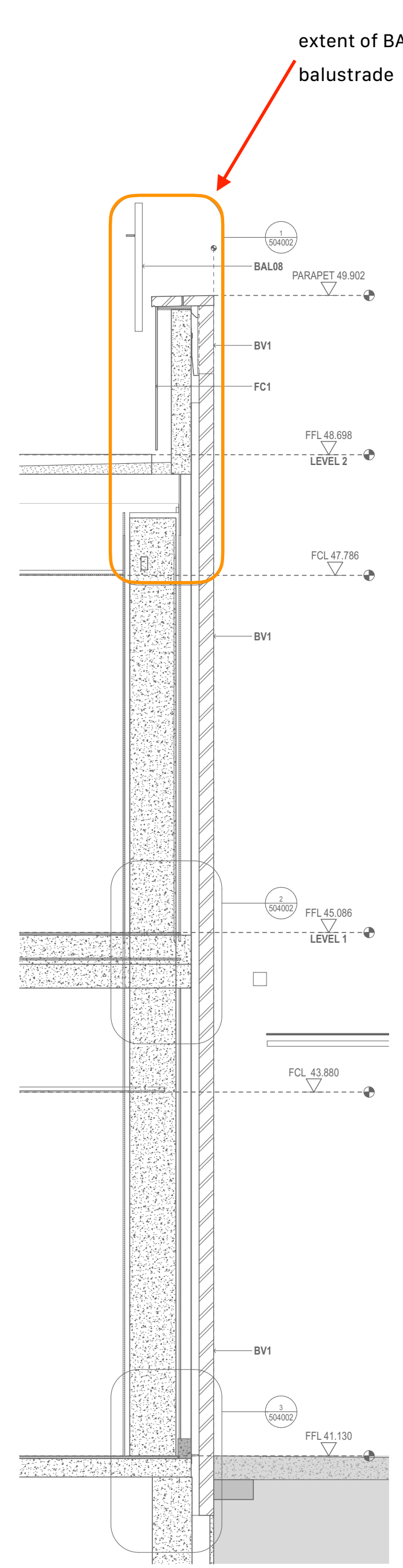
3 ELEVATION WEST  
1:100



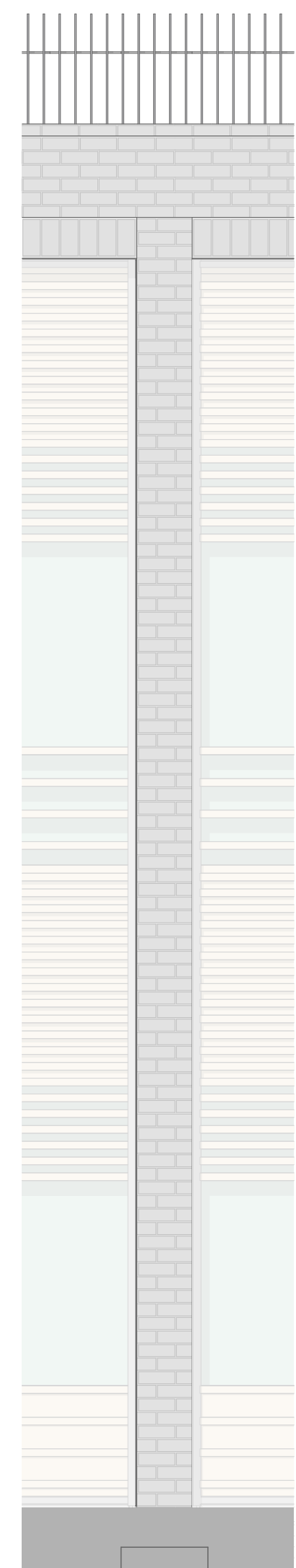
2 ELEVATION WEST  
1:100



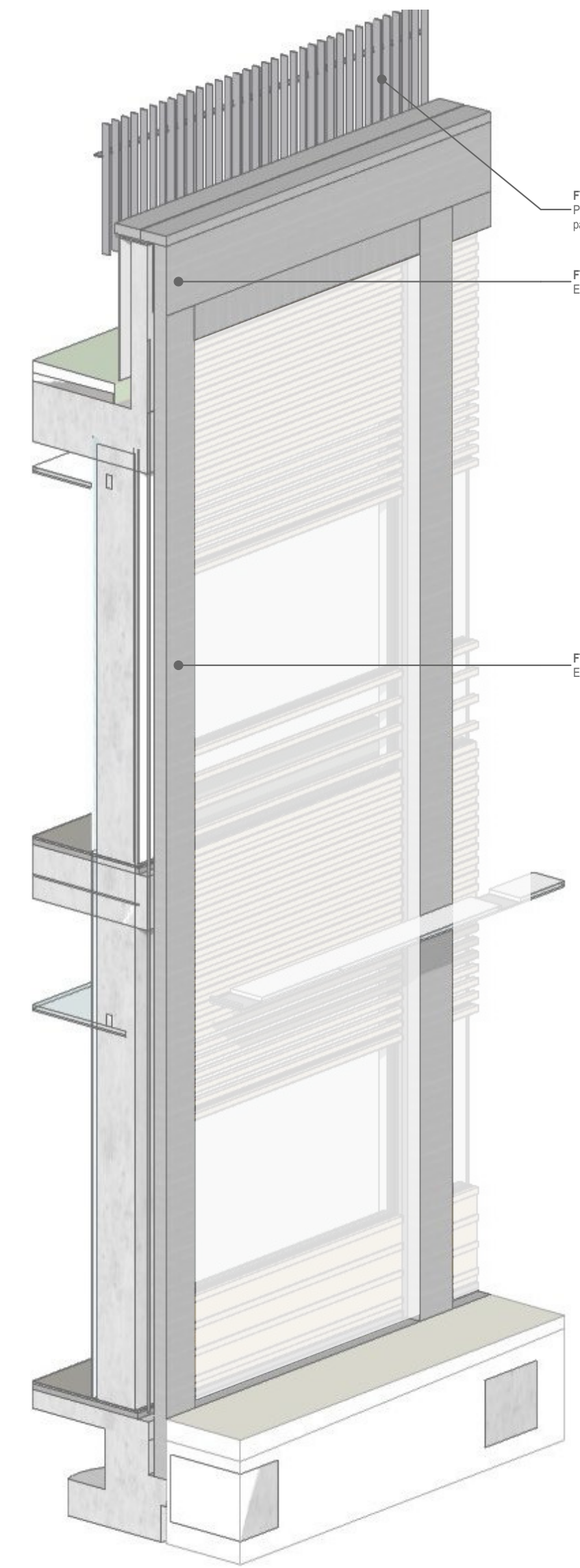
fjstudio / architecture / interiors / urban / landscape / place  
20-20  
1:30



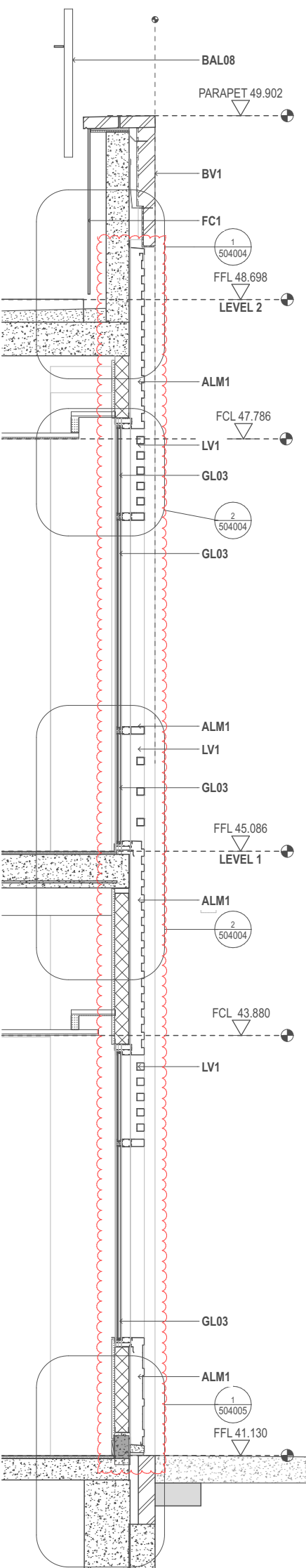
1 SECTION FT10  
1:20



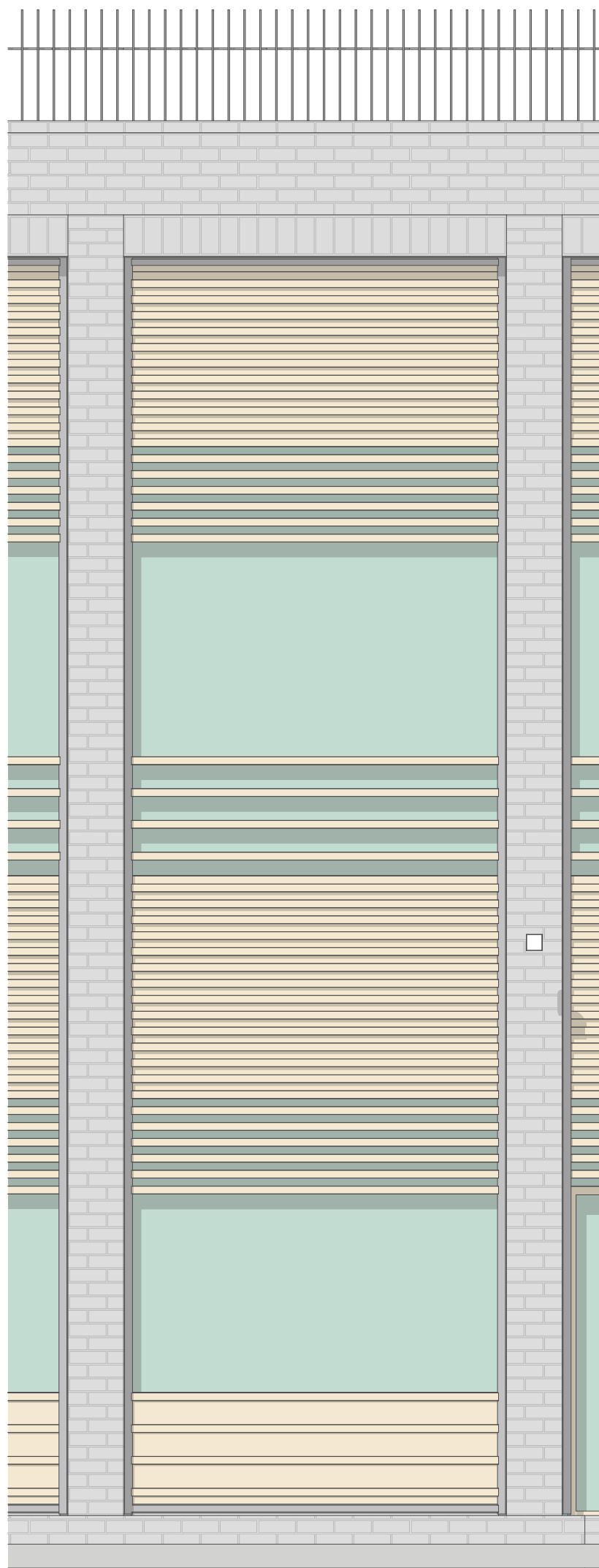
2 ELEVATION FT10A  
1:20



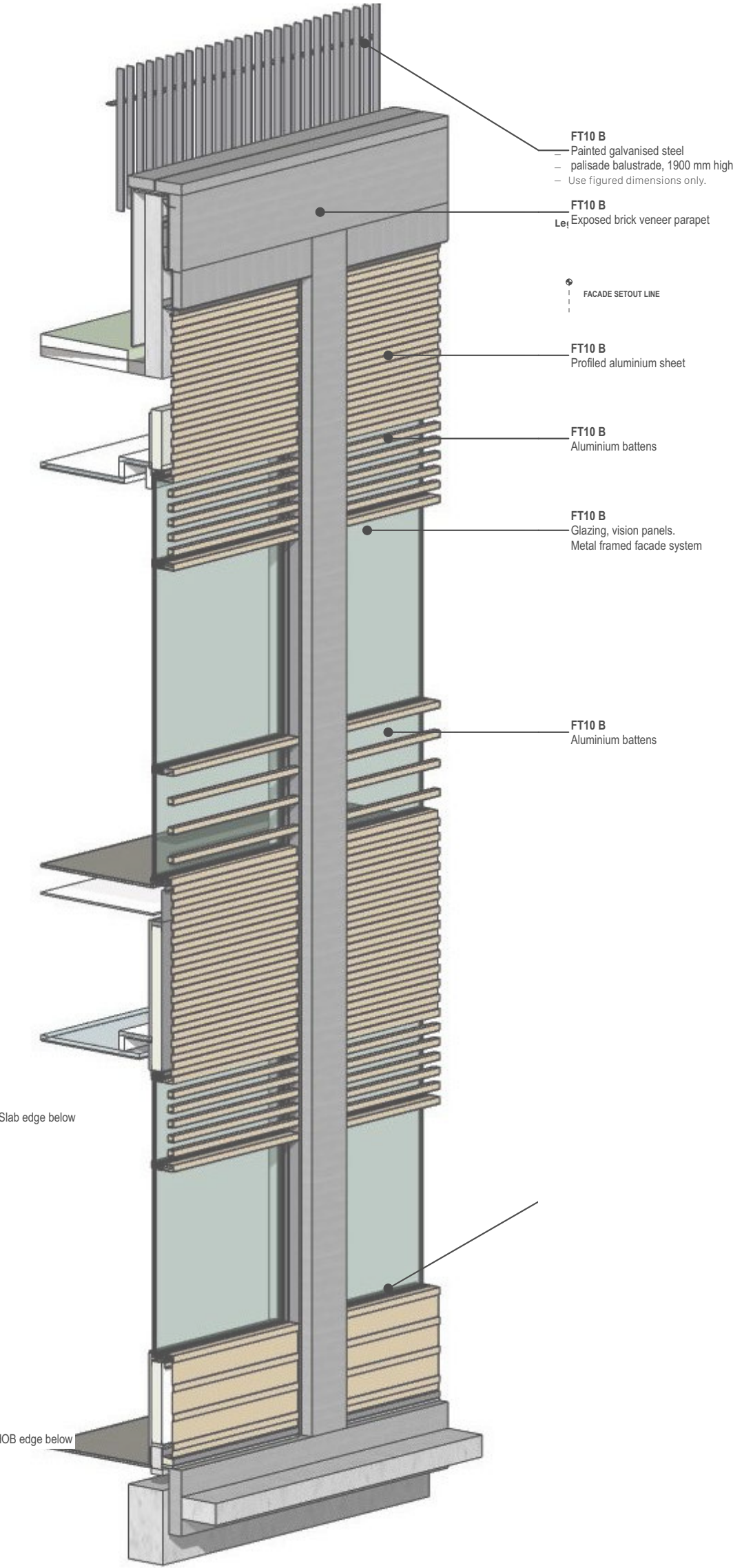
6 AXONOMETRIC FT10  
1:20



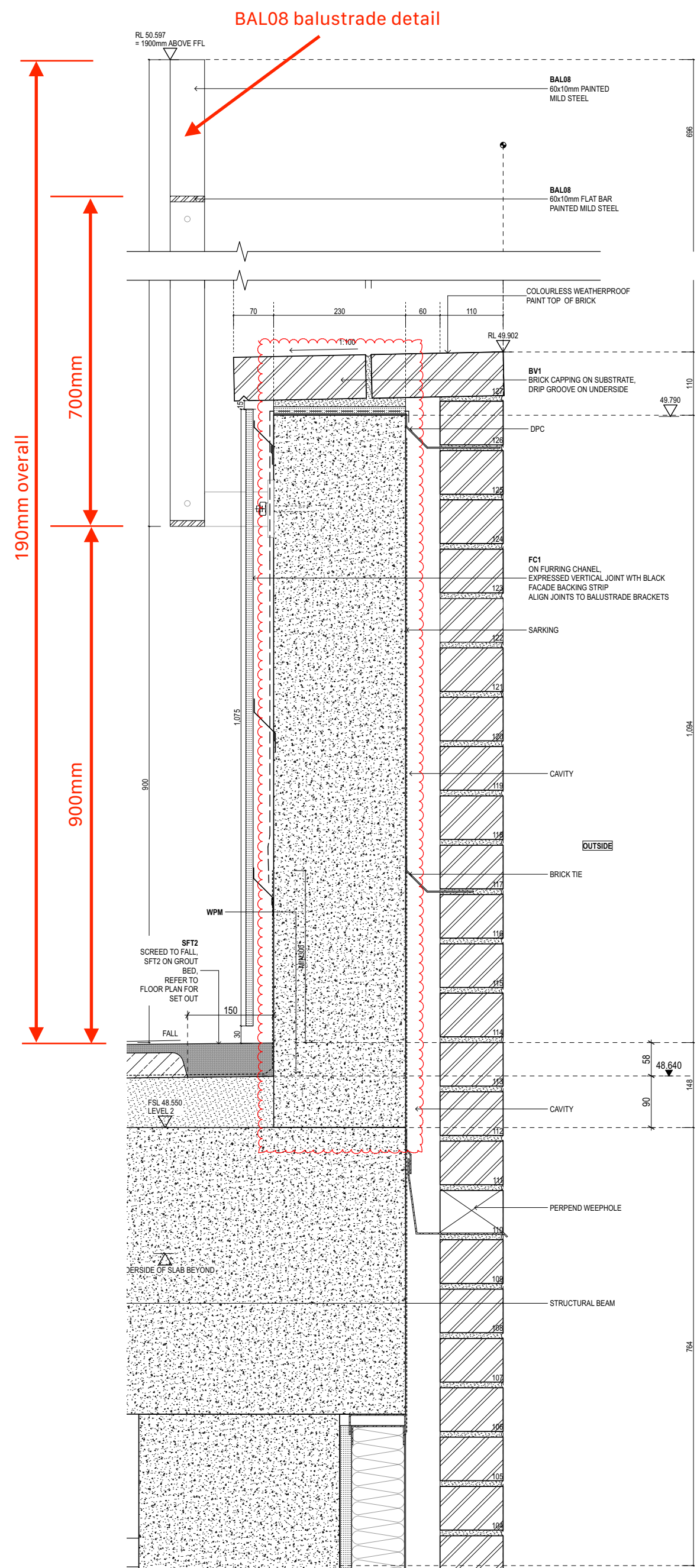
1 SECTION FT10 A/B  
1:20



6 ELEVATION FT10 B  
1:20



5 AXONOMETRIC FT10 B



1 DETAIL FT10 A Parapet  
1:5

