

GENERAL NOTES
 ALL DIMENSIONS AND EXISTING CONDITIONS SHALL BE CHECKED AND VERIFIED BY THE CONTRACTOR BEFORE PROCEEDING WITH THE WORK.
 ALL LEVELS RELATIVE TO AUSTRALIAN HEIGHT DATUM.
 DO NOT SCALE DRAWINGS.
 USE FIGURED DIMENSIONS ONLY.

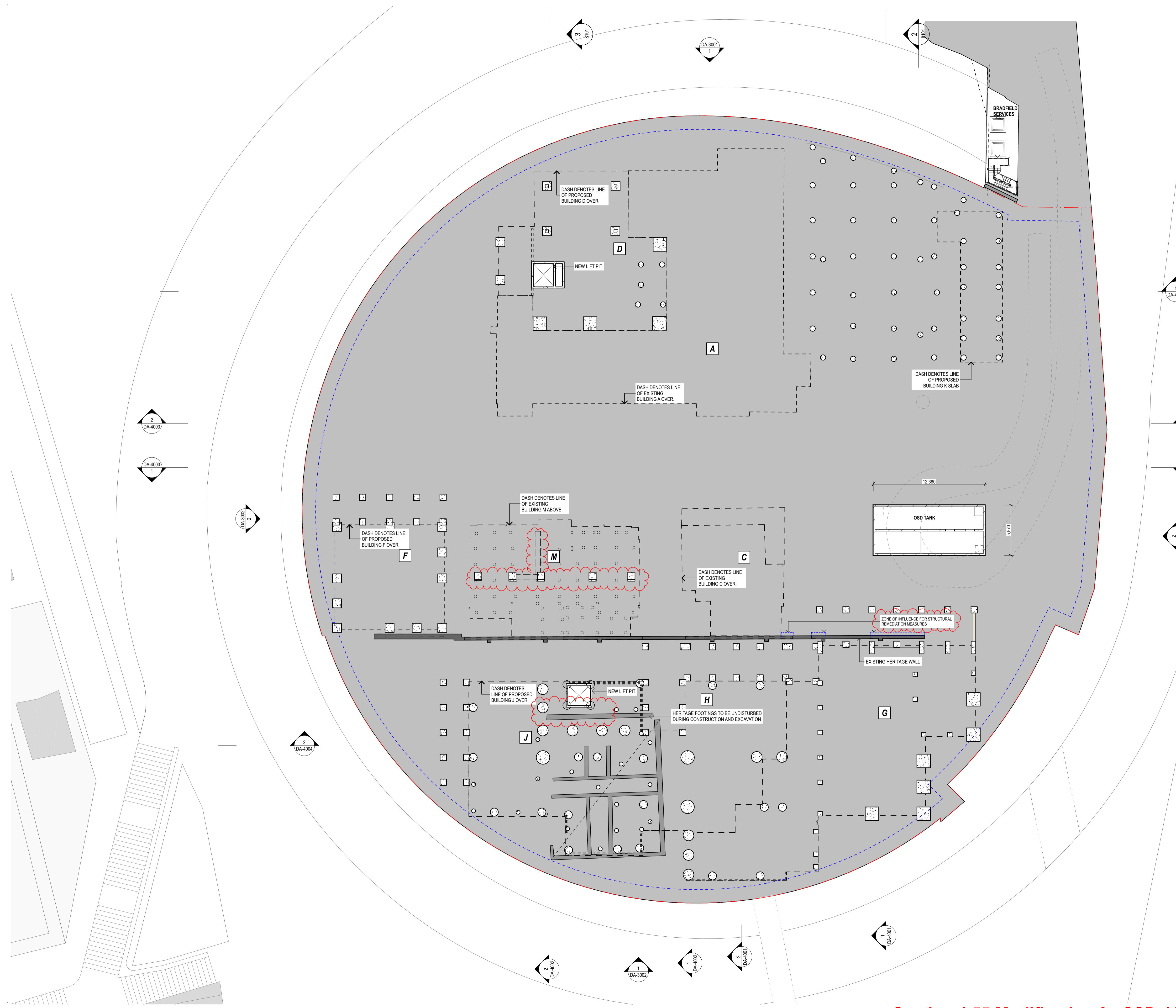
Legend
 --- SITE BOUNDARY

NOTE:
 FURNITURE SHOWN INDICATIVELY. SUBJECT TO FURTHER CONSULTATION AND COORDINATION.

FUTURE SCOPE
COLD SHELL

COLD SHELL Inclusions:
 • Envelope and superstructure including structural floors and walls, facades, roofs, etc.
 • Essential circulation elements including required stairs, lifts, fire isolated passages, etc.
 • Irreversible fire isolation measures to services and detection, sprinklering, to facilitate minimum egress requirements, etc.
 • Essential services infrastructure including in-ground and/or encased trunking pathways and risers to facilitate future brief functions.
 • Section J NCC requirements where not subject to future alteration due to fitout requirements.

COLD SHELL Exclusions:
 • All internal non-essential walls, suspended ceilings, linings and finishes.
 • All Fitout, Furnishings and Equipment (FFE), lights, hydraulic fixtures, ICT, etc.
 • Services from trunk reticulation paths to FFE installations
 • Essential life safety measures to satisfy fitout requirements.



NSW GOVERNMENT Department of Planning and Environment
 Issued under the Environmental Planning and Assessment Act 1979
 Application No: SSD-10340-MOD-2 Sheet No: 1 of 13
 Granted: 16 June 2023 Signed: TG

SSDA03	2/9/22	S455 Modification 2	AWY	DB
SSDA02	28/1/21	S455 Modification	AWY	DB
rev	date	name	by	chk

fynt studio architecture interiors landscape urban community
 sydney melbourne uk
 Level 5, 70 King Street +61 2 9251 7077 www.fyntstudio.com



project
Fort Street Public School
 Observatory Hill
 Sydney NSW 2000

title
General Arrangement Plans
Proposed Plan - Lower Ground 1

scale 1:200 @ A1 first issued 23/9/19

project code	sheet no.	revision
FSS	DA-2001	SSDA03

Section 4.55 Modification 2 - SSD-10340-Mod-2

GENERAL NOTES
 ALL DIMENSIONS AND EXISTING CONDITIONS SHALL BE CHECKED AND VERIFIED BY THE CONTRACTOR BEFORE PROCEEDING WITH THE WORK.
 ALL LEVELS RELATIVE TO AUSTRALIAN HEIGHT DATUM.
 DO NOT SCALE DRAWINGS.
 USE FIGURED DIMENSIONS ONLY.

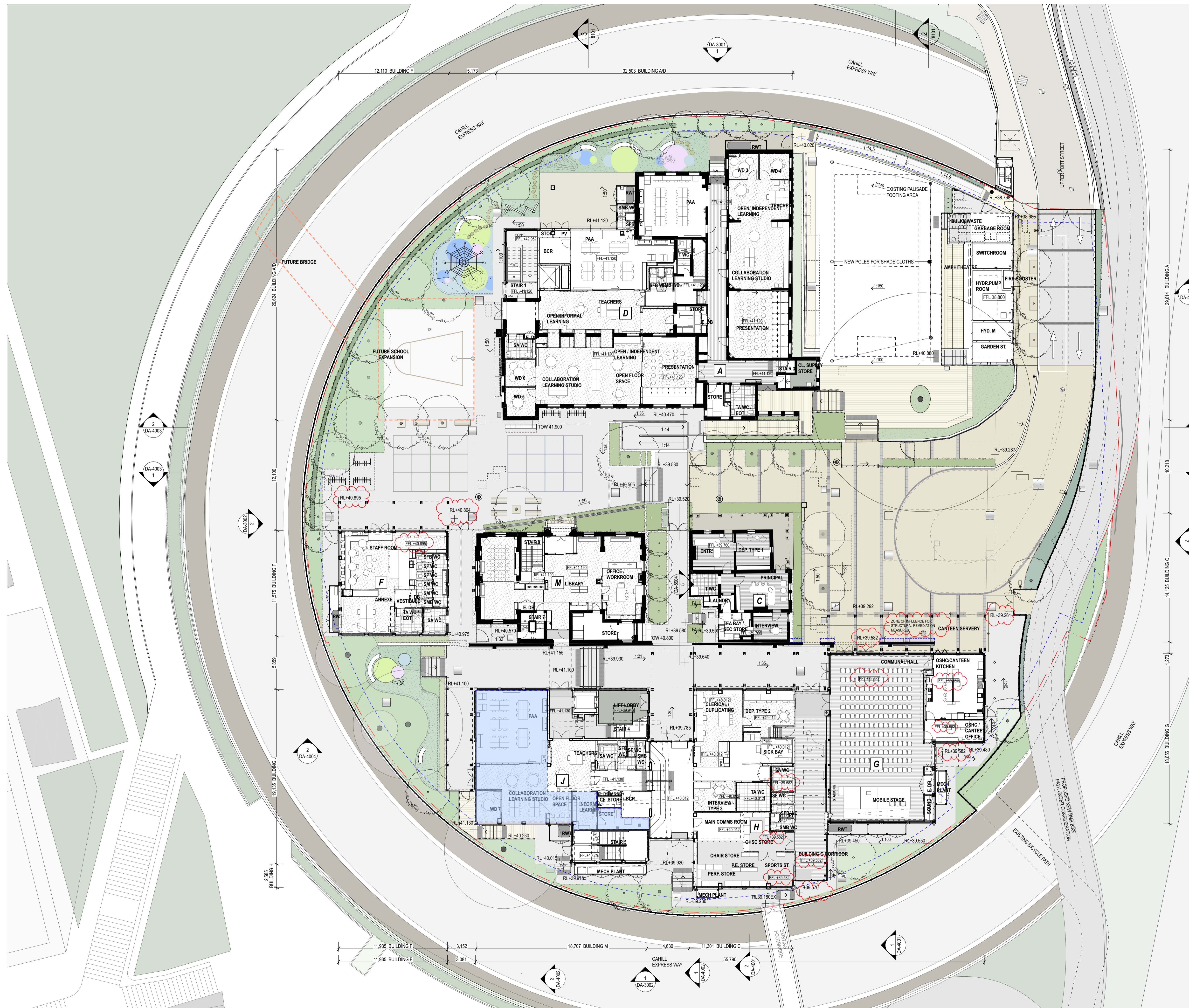
Legend
 SITE BOUNDARY

NOTE:
 FURNITURE SHOWN INDICATIVELY. SUBJECT TO FURTHER CONSULTATION AND COORDINATION.

FUTURE SCOPE
COLD SHELL

COLD SHELL Inclusions:
 • Envelope and superstructure including structural floors and walls, facades, roofs, etc.
 • Essential circulation elements including required stairs, lifts, fire isolated passages, etc.
 • Irreversible fire isolation measures to services and detection, sprinklering, to facilitate minimum egress requirements, etc.
 • Essential services infrastructure including in-ground and/or encased trunking pathways and risers to facilitate future brief functions.
 • Section J NCC requirements where not subject to future alteration due to fitout requirements.

COLD SHELL Exclusions:
 • All internal non-essential walls, suspended ceilings, linings and finishes.
 • All Fitout, Furnishings and Equipment (FFE), lights, hydraulic fixtures, ICT, etc.
 • Services from trunk reticulation paths to FFE installations
 • Essential life safety measures to satisfy fitout requirements.



Department of Planning and Environment
 NSW GOVERNMENT
 Issued under the Environmental Planning and Assessment Act 1979
 Application No: SSD-10340-MOD-2
 Granted: 16 June 2023
 Sheet No: 2 of 13
 Signed: TG

rev	date	name	by	chk
SSDA03	2/9/22	S455 Modification 2	AWY	DB
SSDA02	28/1/21	S455 Modification	AWY	DB

fynt studio architecture interiors landscape urban community
 sydney melbourne uk
 Level 5, 70 King Street +61 2 9251 7077 | fyntstudio.com

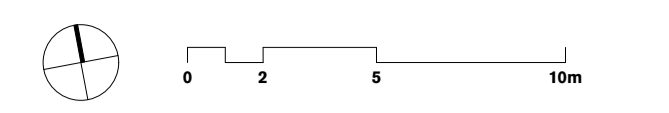
project
Fort Street Public School
 Observatory Hill
 Sydney NSW 2000

title
General Arrangement Plans
Proposed Plan - Ground

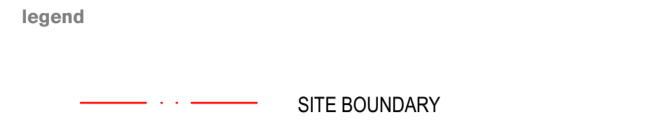
scale 1:200 @ A1 first issued 23/9/19

project code	sheet no.	revision
FSS	DA-2002	SSDA03

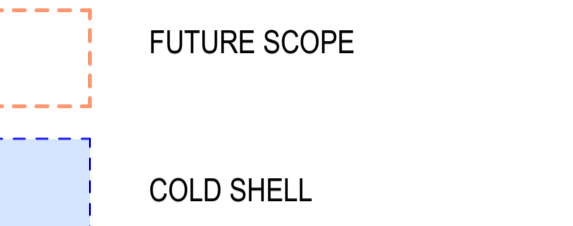
Section 4.55 Modification 2 - SSD-10340-Mod-2



GENERAL NOTES
 ALL DIMENSIONS AND EXISTING CONDITIONS SHALL BE CHECKED AND VERIFIED BY THE CONTRACTOR BEFORE PROCEEDING WITH THE WORK.
 ALL LEVELS RELATIVE TO AUSTRALIAN HEIGHT DATUM.
 DO NOT SCALE DRAWINGS.
 USE FIGURED DIMENSIONS ONLY.

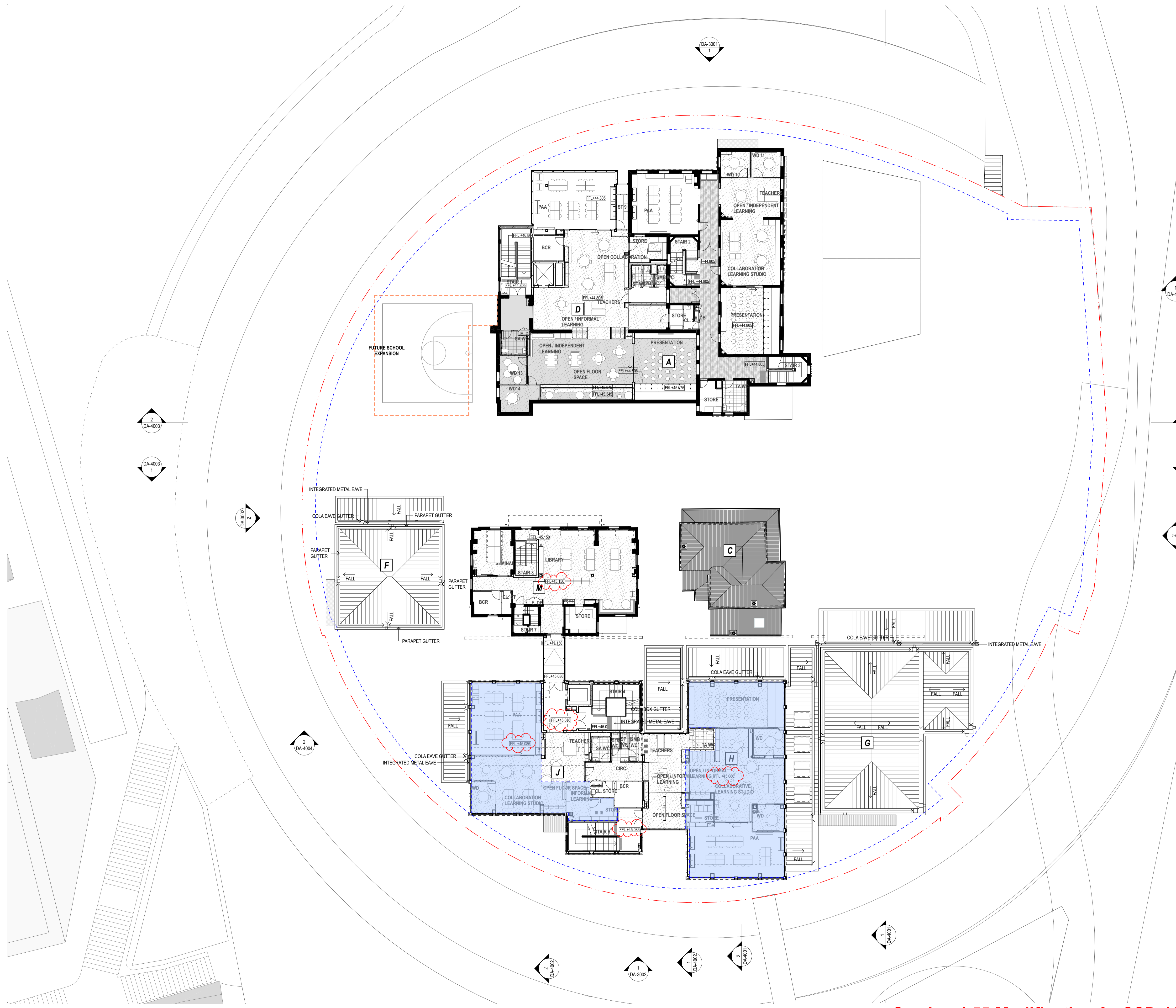



NOTE:
 FURNITURE SHOWN INDICATIVELY. SUBJECT TO FURTHER CONSULTATION AND COORDINATION



COLD SHELL Inclusions:
 • Envelope and superstructure including structural floors and walls, facades, roofs, etc.
 • Essential circulation elements including required stairs, lifts, fire isolated passages, etc.
 • Irreversible fire isolation measures to services and detection, sprinklering, to facilitate minimum egress requirements, etc.
 • Essential services infrastructure including in-ground and/or encased trunking pathways and risers to facilitate future briefed functions.
 • Section J NCC requirements where not subject to future alteration due to fitout requirements.

COLD SHELL Exclusions:
 • All internal non-essential walls, suspended ceilings, linings and finishes.
 • All Fitout, Furnishings and Equipment (FFE), lights, hydraulic fixtures, ICT, etc.
 • Services from trunk reticulation paths to FFE installations
 • Essential life safety measures to satisfy fitout requirements.



 **Department of Planning and Environment**

Issued under the Environmental Planning and Assessment Act 1979

Application No: SSD-10340-MOD-2 Sheet No: 3 of 13
 Granted: 16 June 2023 Signed: TG

SSDA03	2/9/22	S455 Modification 2	AWY	DB
SSDA02	28/1/21	S455 Modification	AWY	DB
rev	date	name	by	chk

first studio architecture interiors landscape urban community
 sydney melbourne uk
 Level 5, 70 King Street • +61 2 9251 7077 • firststudio.com



project
Fort Street Public School
 Observatory Hill
 Sydney NSW 2000

title
General Arrangement Plans
Proposed Plan - Level 1

scale 1:200 @ A1 first issued 23/9/19

project code	sheet no.	revision
FSS	DA-2003	SSDA03

Section 4.55 Modification 2 - SSD-10340-Mod-2

GENERAL NOTES
 ALL DIMENSIONS AND EXISTING CONDITIONS SHALL BE CHECKED AND VERIFIED BY THE CONTRACTOR BEFORE PROCEEDING WITH THE WORK.
 ALL LEVELS RELATIVE TO AUSTRALIAN HEIGHT DATUM.
 DO NOT SCALE DRAWINGS.
 USE FIGURED DIMENSIONS ONLY.

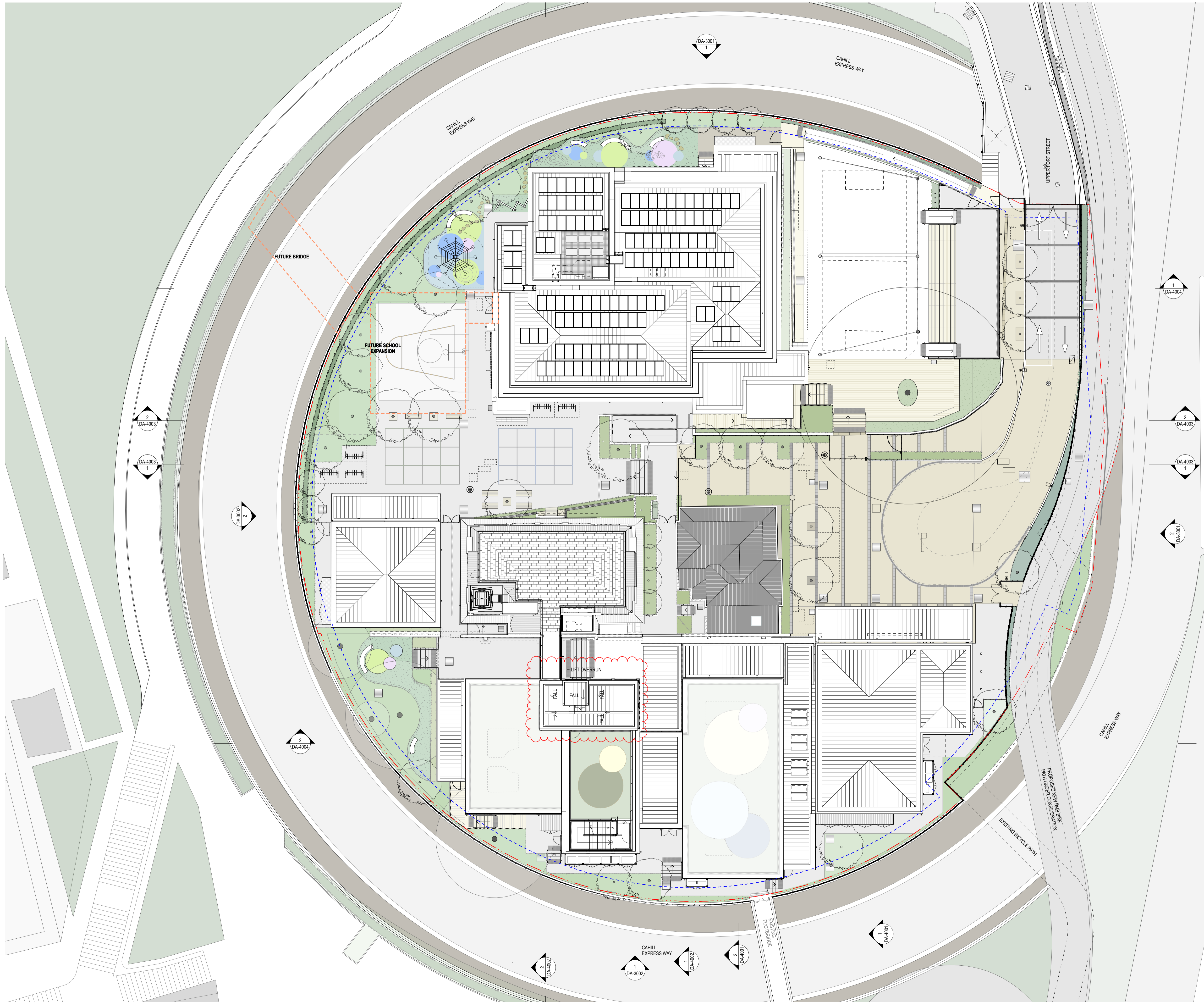
Legend
 --- SITE BOUNDARY

NOTE:
 FURNITURE SHOWN INDICATIVELY. SUBJECT TO FURTHER CONSULTATION AND COORDINATION.

FUTURE SCOPE
COLD SHELL

COLD SHELL Inclusions:
 • Envelope and superstructure including structural floors and walls, facades, roofs, etc.
 • Essential circulation elements including required stairs, lifts, fire isolated passages, etc.
 • Irreversible fire isolation measures to services and detection, sprinklering, to facilitate minimum egress requirements, etc.
 • Essential services infrastructure including in-ground and/or encased trunking pathways and risers to facilitate future brief functions.
 • Section J NCC requirements where not subject to future alteration due to fitout requirements.

COLD SHELL Exclusions:
 • All internal non-essential walls, suspended ceilings, linings and finishes.
 • All Fitout, Furnishings and Equipment (FFE), lights, hydraulic fixtures, ICT, etc.
 • Services from trunk reticulation paths to FFE installations
 • Essential life safety measures to satisfy fitout requirements.



Department of Planning and Environment

Issued under the Environmental Planning and Assessment Act 1979

Application No: SSD-10340-MOD-2 Sheet No: 4 of 13
 Granted: 16 June 2023 Signed: TG

rev	date	name	by	chk
SSDA03	2/9/22	S455 Modification 2	AWY	DB
SSDA02	28/1/21	S455 Modification	AWY	DB

first studio architecture interiors landscape urban community
 sydney melbourne uk
 Level 5, 70 King Street • +61 2 9251 7077 • firststudio.com



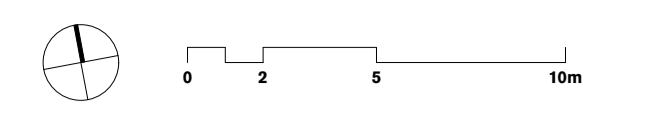
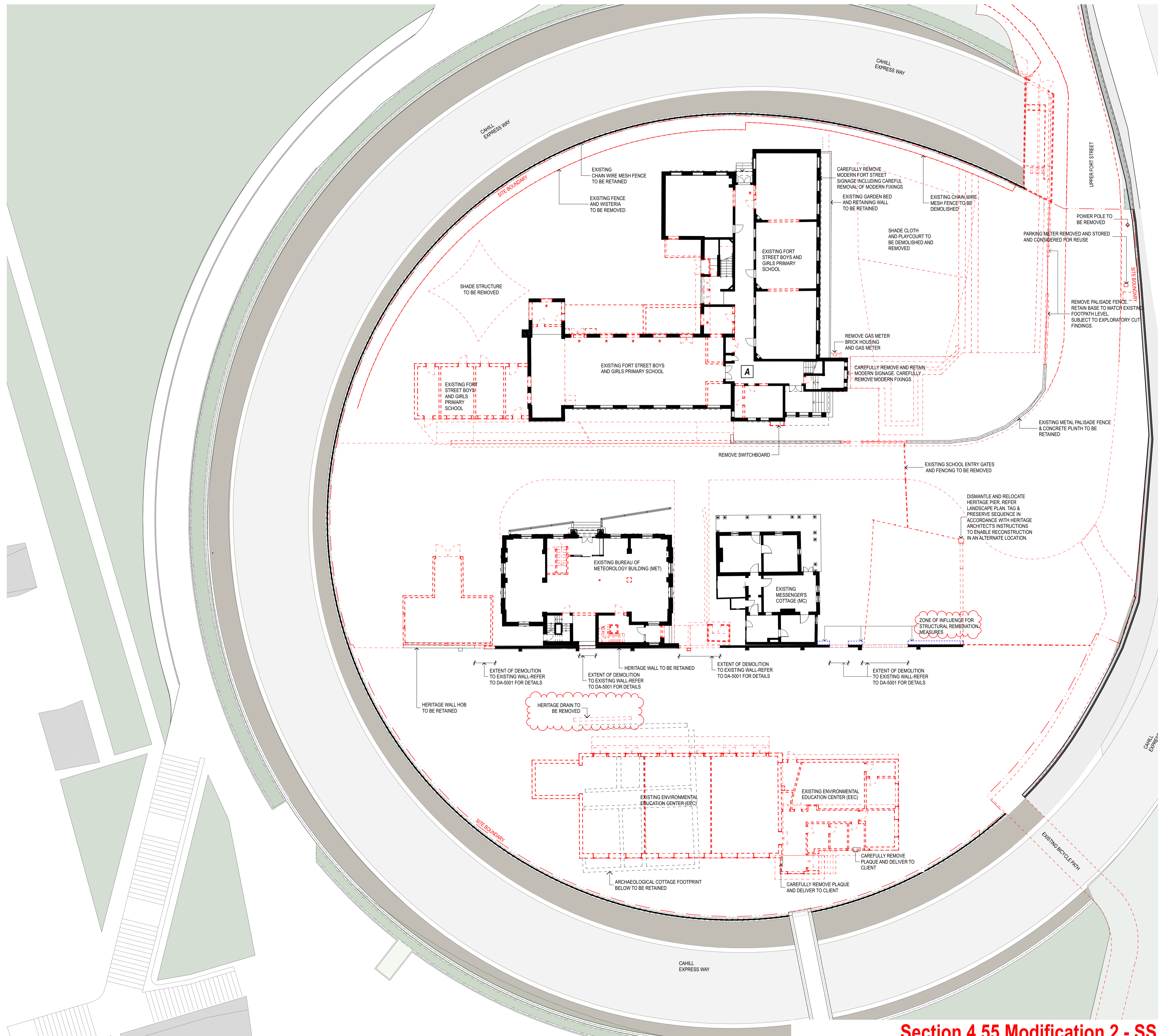
project
Fort Street Public School
 Observatory Hill
 Sydney NSW 2000

title
General Arrangement Plans
Proposed Plan - Roof

scale 1:200 @ A1 first issued 23/9/19

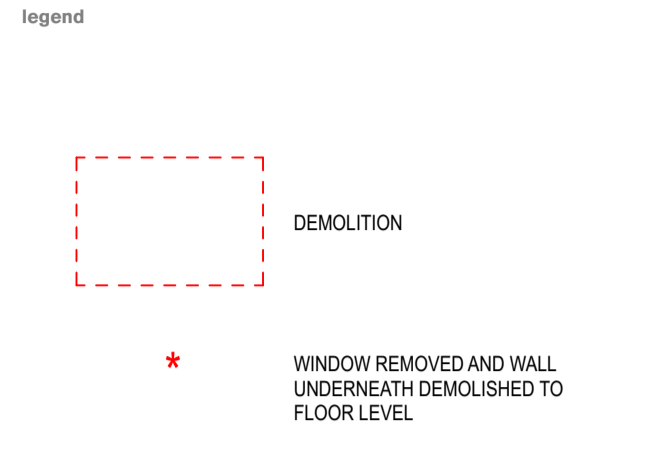
project code	sheet no.	revision
FSS	DA-2006	SSDA03


Section 4.55 Modification 2 - SSD-10340-Mod-2



GENERAL NOTES

- ALL DIMENSIONS AND EXISTING CONDITIONS SHALL BE CHECKED AND VERIFIED BY THE CONTRACTOR BEFORE PROCEEDING WITH THE WORK.
- ALL LEVELS RELATIVE TO AUSTRALIAN HEIGHT DATUM.
- DO NOT SCALE DRAWINGS.
- USE FIGURED DIMENSIONS ONLY.





Department of Planning and Environment

Issued under the Environmental Planning and Assessment Act 1979

Application No: SSD-10340-MOD-2
 Granted: 16 June 2023

Sheet No: 5 of 13
 Signed: TG

rev	date	name	by	chk
SSDA03	2/9/22	S455 Modification 2	AWY	
SSDA02	28/1/21	S455 Modification	AWY	
SSDA01	18/12/19	State Significance Development Application	CTK	

fjmt
 fjmt studio architecture interiors landscape urban community
 sydney melbourne uk
 Level 5, 70 King Street +61 2 9251 7077 | fjmtstudio.com

project
Fort Street Public School
 Observatory Hill
 Sydney NSW 2000

title
Demolition Plans
Demolition Plan - Ground

scale 1:200 @ A1 first issued 23/9/19

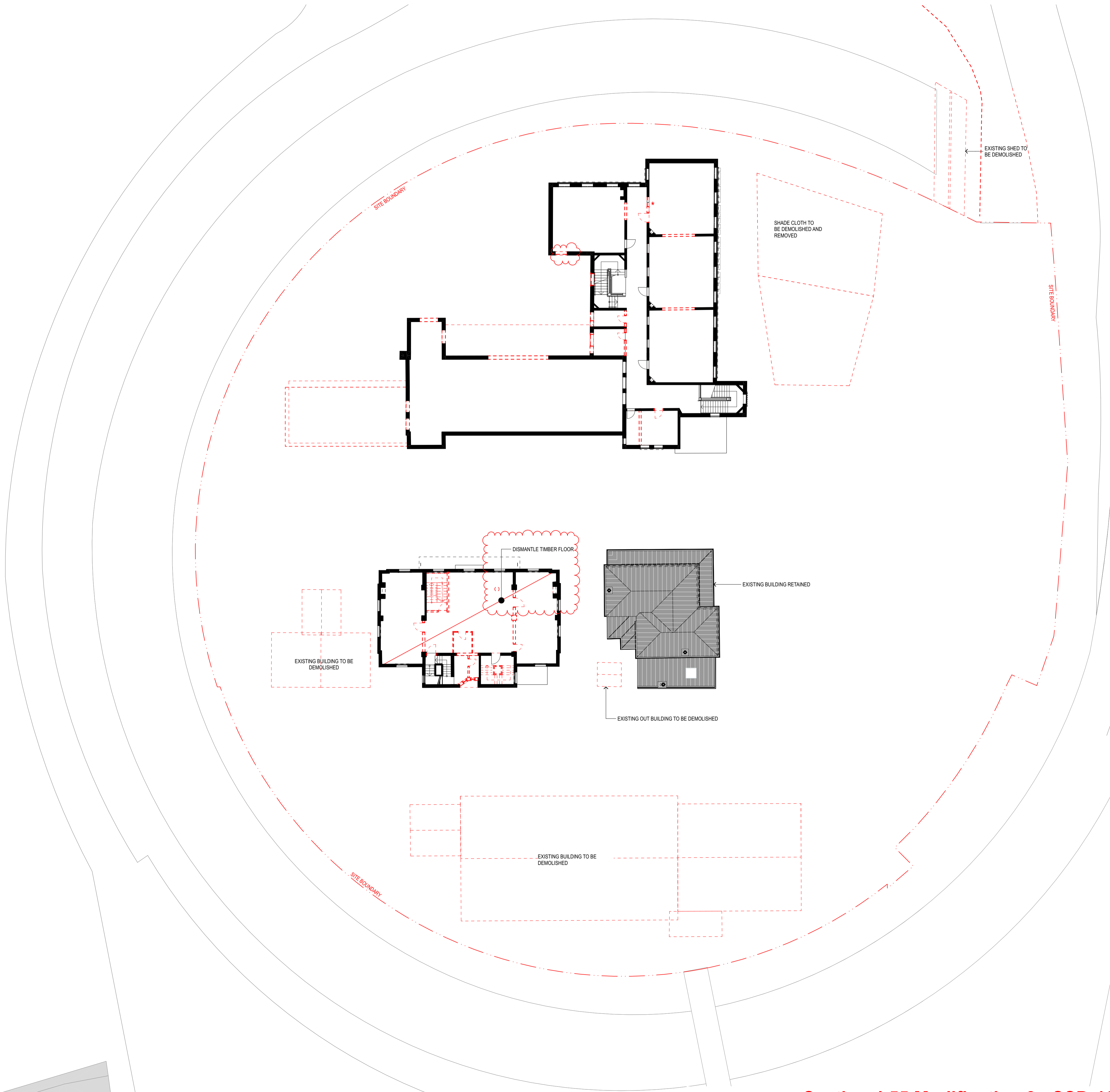
project code sheet no. revision
FSS DA-2101 SSDA03

Section 4.55 Modification 2 - SSD-10340-Mod-2



GENERAL NOTES
 ALL DIMENSIONS AND EXISTING CONDITIONS SHALL BE CHECKED AND VERIFIED BY THE CONTRACTOR BEFORE PROCEEDING WITH THE WORK.
 ALL LEVELS RELATIVE TO AUSTRALIAN HEIGHT DATUM.
 DO NOT SCALE DRAWINGS.
 USE FIGURED DIMENSIONS ONLY.

- Legend
- DEMOLITION
 - * WINDOW REMOVED AND WALL UNDERNEATH DEMOLISHED TO FLOOR LEVEL



Department of Planning and Environment

Issued under the Environmental Planning and Assessment Act 1979

Application No: SSD-10340-MOD-2 Sheet No: 6 of 13

Granted: 16 June 2023 Signed: TG

SSDA03	2/9/22	S455 Modification 2	AWY
SSDA02	28/1/21	S455 Modification	AWY
SSDA01	18/12/19	State Significance Development Application	CTK
rev	date	name	by chk

fjmt studio architecture interiors landscape urban community
 sydney melbourne uk
 Level 5, 70 King Street +61 2 9251 7077 www.fjmtstudio.com



project
Fort Street Public School
 Observatory Hill
 Sydney NSW 2000

title
Demolition Plans
Demolition Plan - Level 1

scale 1:200 @ A1 first issued 23/9/19

project code sheet no. revision
FSS **DA-2102** **SSDA03**

Section 4.55 Modification 2 - SSD-10340-Mod-2



GENERAL NOTES
 ○ ALL DIMENSIONS AND EXISTING CONDITIONS SHALL BE CHECKED AND VERIFIED BY THE CONTRACTOR BEFORE PROCEEDING WITH THE WORK.
 ○ ALL LEVELS RELATIVE TO AUSTRALIAN HEIGHT DATUM.
 ○ DO NOT SCALE DRAWINGS.
 ○ USE FIGURED DIMENSIONS ONLY.

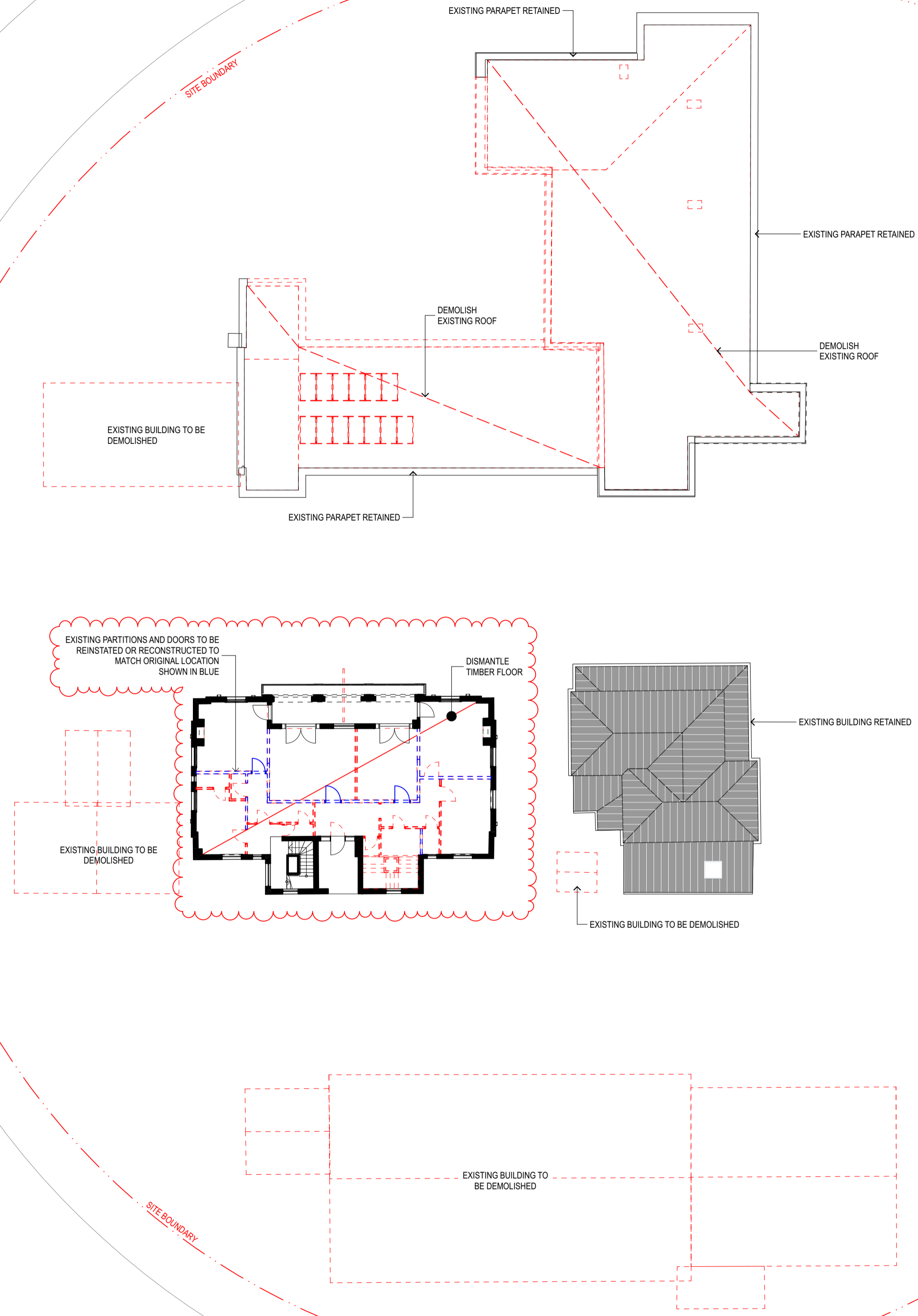
Legend



DEMOLITION



WINDOW REMOVED AND WALL UNDERNEATH DEMOLISHED TO FLOOR LEVEL



NSW GOVERNMENT Department of Planning and Environment
 Issued under the Environmental Planning and Assessment Act 1979
 Application No: SSD-10340-MOD-2 Sheet No: 7 of 13
 Granted: 16 June 2023 Signed: TG

SSDA03	2/9/22	S455 Modification 2	AWY
SSDA02	28/1/21	S455 Modification	AWY
SSDA01	18/12/19	State Significance Development Application	CTK
rev	date	name	by chk

fjmt studio architecture interiors landscape urban community
 sydney melbourne uk
 Level 5, 70 King Street +61 2 9251 7077 www.fjmtstudio.com

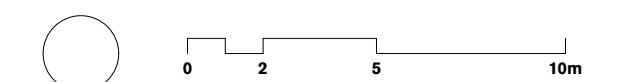


project
Fort Street Public School
 Observatory Hill
 Sydney NSW 2000

title
Demolition Plans
Demolition Plan - Level 2

scale	1:200 @ A1	first issued	23/9/19
project code	sheet no.	revision	
FSS	DA-2103	SSDA03	

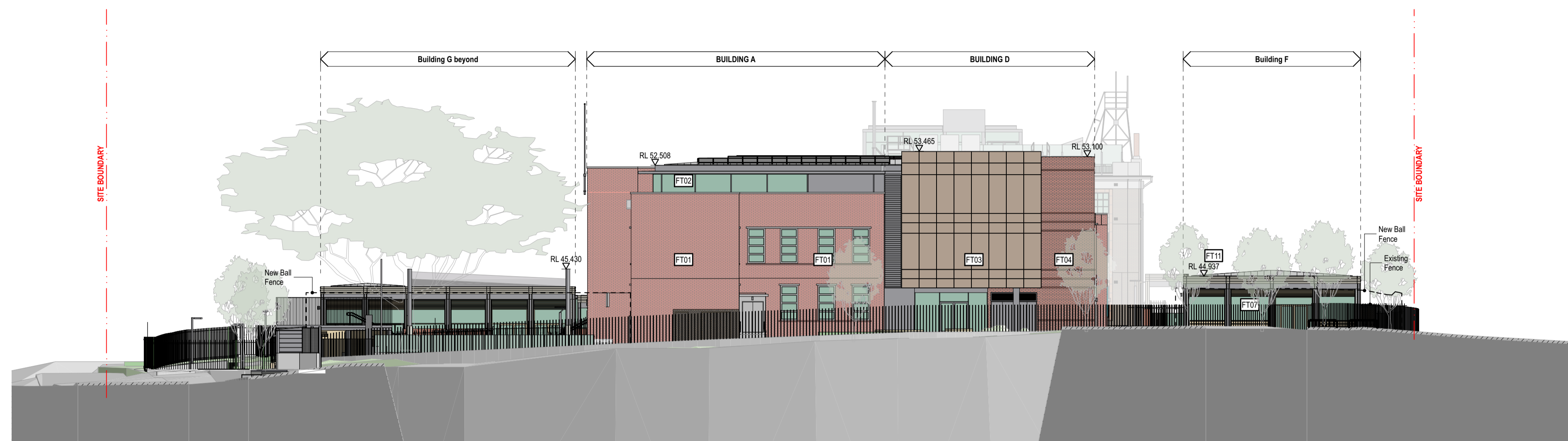
Section 4.55 Modification 2 - SSD-10340-Mod-2



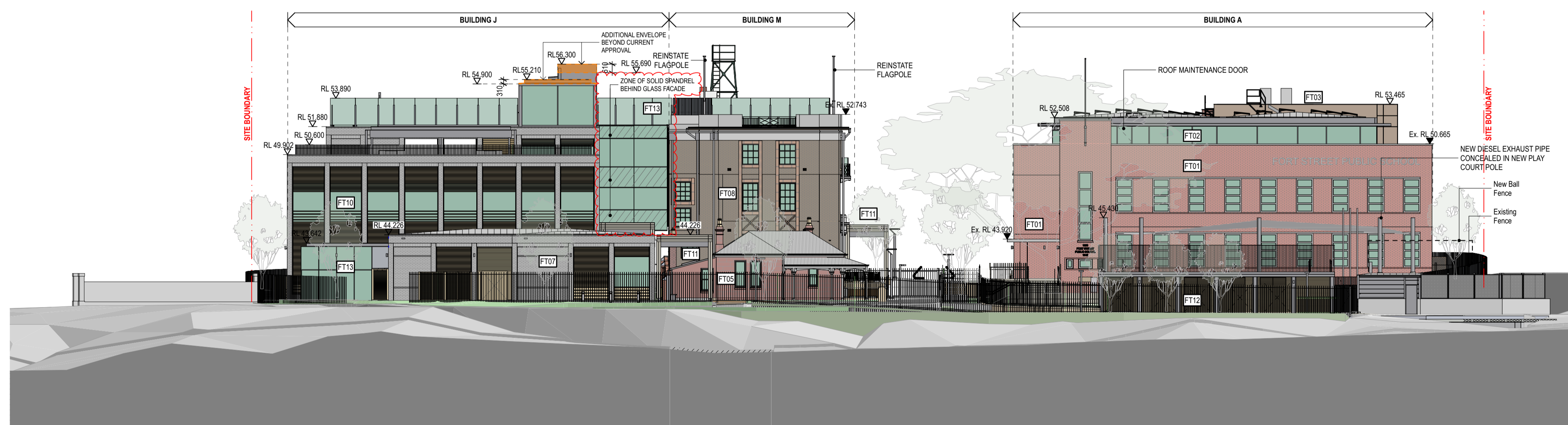
GENERAL NOTES

- ALL DIMENSIONS AND EXISTING CONDITIONS SHALL BE CHECKED AND VERIFIED BY THE CONTRACTOR BEFORE PROCEEDING WITH THE WORK.
- ALL LEVELS RELATIVE TO AUSTRALIAN HEIGHT DATUM.
- DO NOT SCALE DRAWINGS.
- USE FIGURED DIMENSIONS ONLY.

legend



1 ELEVATION NORTH
1:200



2 ELEVATION EAST
1:200

Department of Planning and Environment

Issued under the Environmental Planning and Assessment Act 1979

Application No: SSD-10340-MOD-2 Sheet No: 8 of 13

Granted: 16 June 2023 Signed: TG

rev	date	name	by	chk
SSDA03	7/3/2023	S455 Modification 2		PC
SSDA03	2/9/22	S455 Modification 2		AWY
SSDA02	28/5/20	S455 Modification		AWY

fjmt studio architecture interiors landscape urban community
sydney melbourne uk
Level 5, 70 King Street • +61 2 9251 7077 • fjmtstudio.com



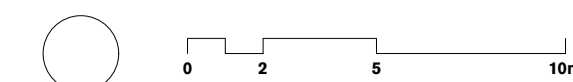
project
Fort Street Public School
Observatory Hill
Sydney NSW 2000

title
3000 1:200 Elevations
Elevations North East

scale 1:200 @ A1 first issued 30/9/2019

project code sheet no. revision
FSS DA-3001 SSDA03

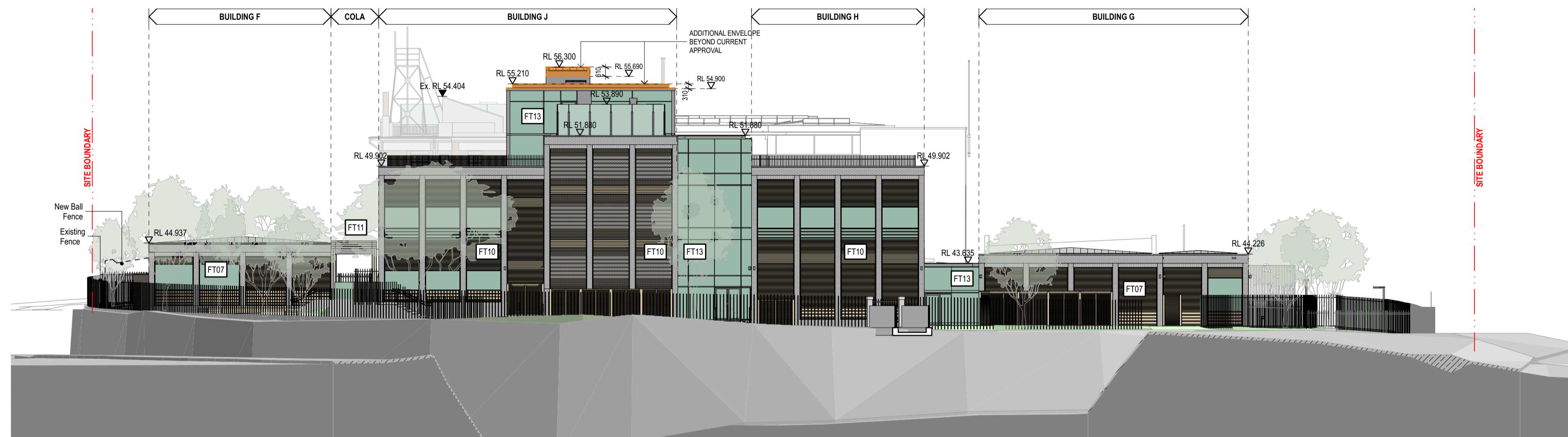
Section 4.55 Modification 2 - SSD-10340-Mod-2



GENERAL NOTES

- ALL DIMENSIONS AND EXISTING CONDITIONS SHALL BE CHECKED AND VERIFIED BY THE CONTRACTOR BEFORE PROCEEDING WITH THE WORK.
- ALL LEVELS RELATIVE TO AUSTRALIAN HEIGHT DATUM.
- DO NOT SCALE DRAWINGS.
- USE FIGURED DIMENSIONS ONLY.

legend



1 ELEVATION SOUTH
1:200



2 ELEVATION WEST
1:200



Department of Planning and Environment

Issued under the Environmental Planning and Assessment Act 1979

Application No: SSD-10340-MOD-2 Sheet No: 9 of 13

Granted: 16 June 2023 Signed: TG

rev	date	name	by	chk
SSDA03	7/3/2023	S4.55 Modification 2		PC
SSDA03	2/9/22	S4.55 Modification 2		AWY
SSDA02	29/5/20	S4.55 Modification		AWY

fjmt studio architecture interiors landscape urban community
sydney melbourne uk
Level 5, 70 King Street • +61 2 9251 7077 • fjmtstudio.com



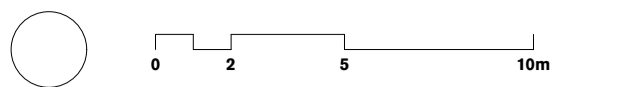
project
Fort Street Public School
Observatory Hill
Sydney NSW 2000

title
3000 1:200 Elevations
Elevations South West

scale 1:200 @ A1 first issued 30/9/2019

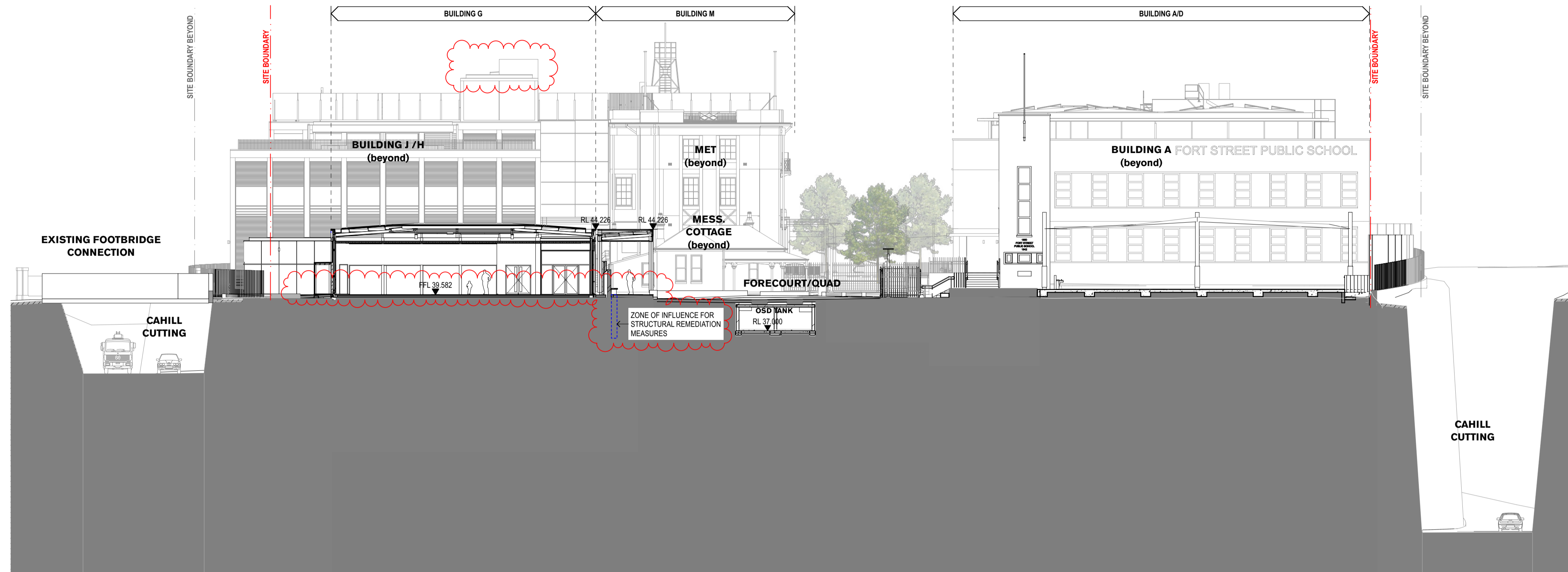
project code	sheet no.	revision
FSS	DA-3002	SSDA03

Section 4.55 Modification 2 - SSD-10340-Mod-2

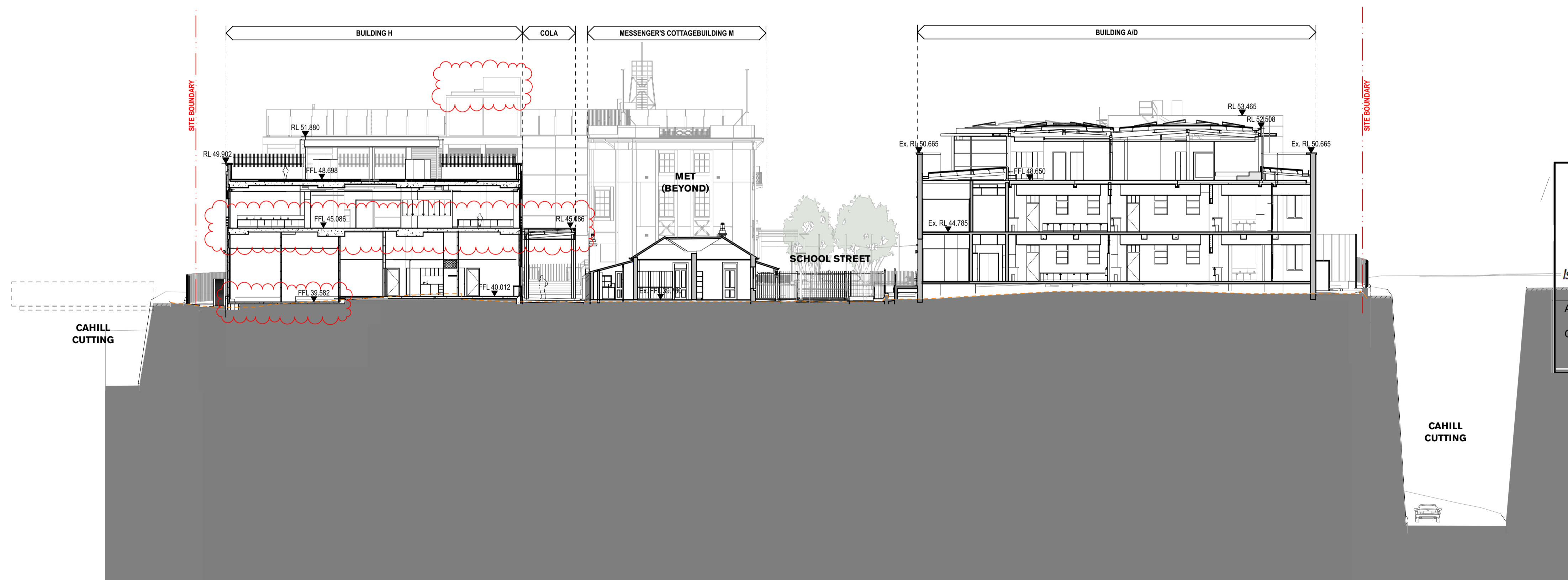


- GENERAL NOTES**
- ALL DIMENSIONS AND EXISTING CONDITIONS SHALL BE CHECKED AND VERIFIED BY THE CONTRACTOR BEFORE PROCEEDING WITH THE WORK.
 - ALL LEVELS RELATIVE TO AUSTRALIAN HEIGHT DATUM.
 - DO NOT SCALE DRAWINGS.
 - USE FIGURED DIMENSIONS ONLY.

Legend



1 SECTION Section At Bldg A
1:200



2 SECTION Section At Cottage
1:200

NSW GOVERNMENT Department of Planning and Environment

Issued under the Environmental Planning and Assessment Act 1979

Application No: SSD-10340-MOD-2 Sheet No: 10 of 13
 Granted: 16 June 2023 Signed: TG

SSDA03	2/9/22	S455 Modification 2	AWY
SSDA02	29/5/20	S455 Modification	AWY
rev	date	name	by chk

fjmt studio architecture interiors landscape urban community
 sydney melbourne uk
 Level 5, 70 King Street • +61 2 9251 7077 • fjmtstudio.com

project
Fort Street Public School
 Observatory Hill
 Sydney NSW 2000

title
4000 1:200 Sections
Sections 1

scale	1:200 @ A1	first issued	30/9/19
project code	FSS	sheet no.	DA-4001
		revision	SSDA03

Section 4.55 Modification 2 - SSD-10340-Mod-2

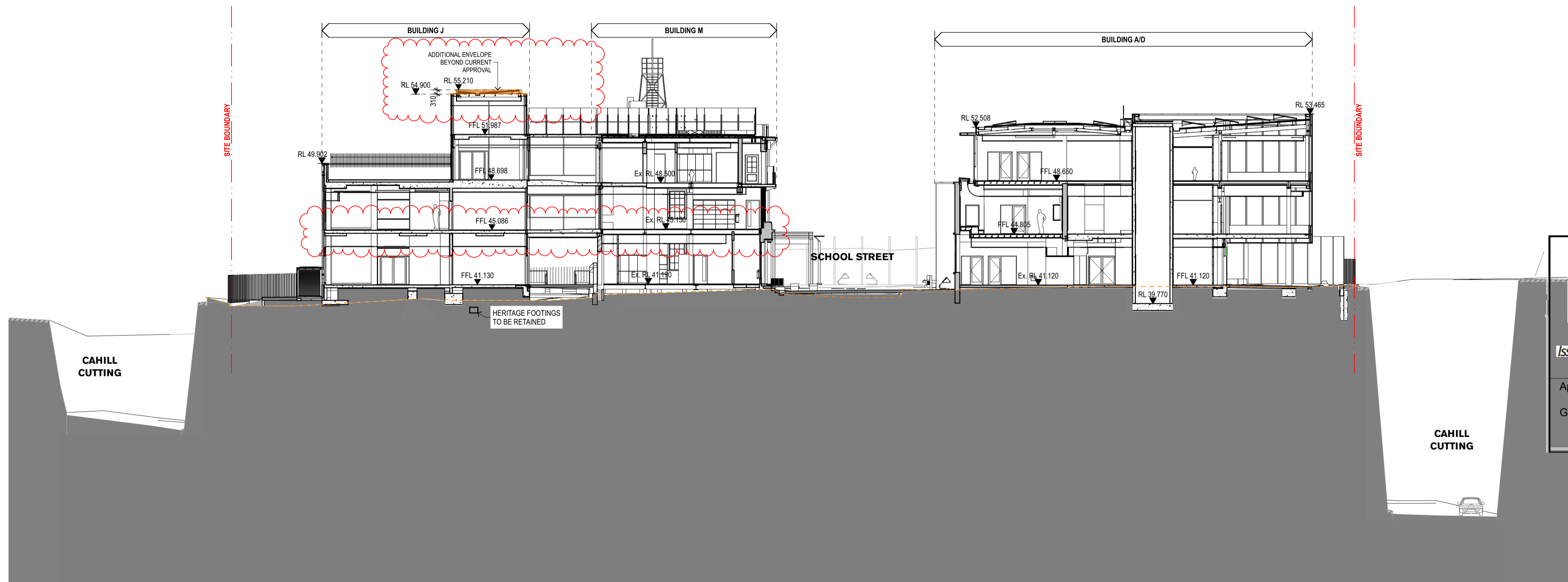


- GENERAL NOTES**
- ALL DIMENSIONS AND EXISTING CONDITIONS SHALL BE CHECKED AND VERIFIED BY THE CONTRACTOR BEFORE PROCEEDING WITH THE WORK.
 - ALL LEVELS RELATIVE TO AUSTRALIAN HEIGHT DATUM.
 - DO NOT SCALE DRAWINGS.
 - USE FIGURED DIMENSIONS ONLY.

Legend



1 SECTION Section At COLA
1:200



2 SECTION Section At MET
1:200

NSW GOVERNMENT Department of Planning and Environment

Issued under the Environmental Planning and Assessment Act 1979

Application No: SSD-10340-MOD-2 Sheet No: 11 of 13
 Granted: 16 June 2023 Signed: TG

SSDA03	2/9/22	S455 Modification 2	AWY
SSDA02	29/5/20	S455 Modification	AWY
rev	date	name	by chk

fjmt studio architecture interiors landscape urban community
 sydney melbourne uk
 Level 5, 70 King Street • +61 2 9251 7077 • fjmtstudio.com



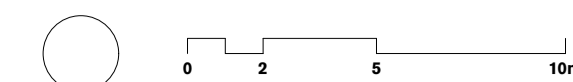
project
Fort Street Public School
 Observatory Hill
 Sydney NSW 2000

title
4000 1:200 Sections
Sections 2

scale 1:200 @ A1 first issued 30/9/19

project code	sheet no.	revision
FSS	DA-4002	SSDA03

Section 4.55 Modification 2 - SSD-10340-Mod-2



- GENERAL NOTES**
- ALL DIMENSIONS AND EXISTING CONDITIONS SHALL BE CHECKED AND VERIFIED BY THE CONTRACTOR BEFORE PROCEEDING WITH THE WORK.
 - ALL LEVELS RELATIVE TO AUSTRALIAN HEIGHT DATUM.
 - DO NOT SCALE DRAWINGS.
 - USE FIGURED DIMENSIONS ONLY.

Legend



1 SECTION Section At Main Street S
1:200



2 SECTION Section At Main Street N
1:200



Issued under the Environmental Planning and Assessment Act 1979

Application No: SSD-10340-MOD-2

Sheet No: 12 of 13

Granted: 16 June 2023

Signed: TG

rev	date	name	by	chk
SSDA03	2/9/22	S455 Modification 2		AWY
SSDA02	29/5/20	S455 Modification		AWY

fjmt studio architecture interiors landscape urban community
sydney melbourne uk
Level 5, 70 King Street • +61 2 9251 7077 • fjmtstudio.com



project
Fort Street Public School
Observatory Hill
Sydney NSW 2000

title
4000 1:200 Sections
Sections 3

scale 1:200 @ A1 first issued 30/9/19

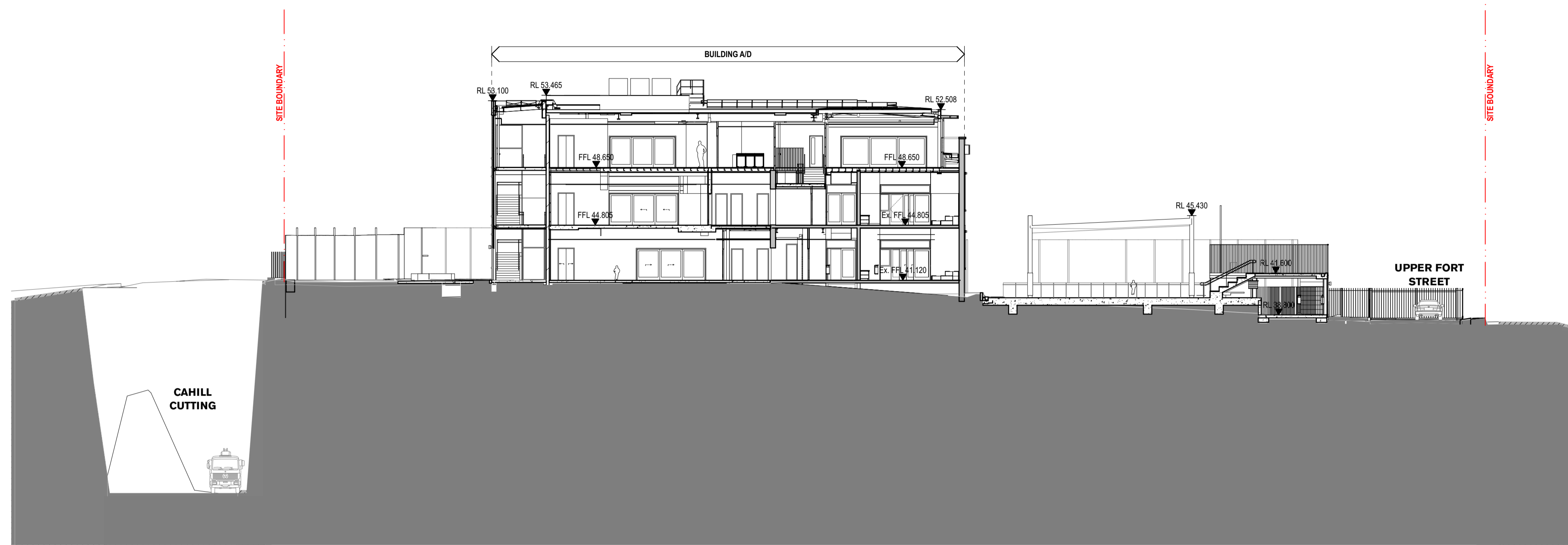
project code	sheet no.	revision
FSS	DA-4003	SSDA03

Section 4.55 Modification 2 - SSD-10340-Mod-2

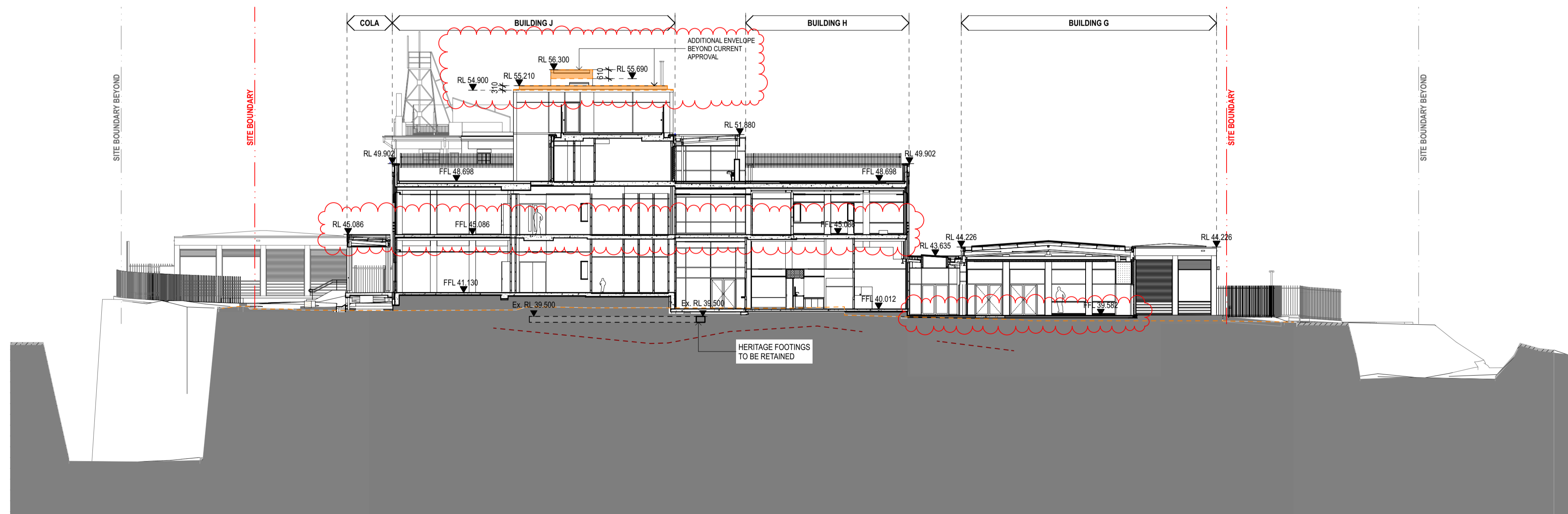


- GENERAL NOTES**
- ALL DIMENSIONS AND EXISTING CONDITIONS SHALL BE CHECKED AND VERIFIED BY THE CONTRACTOR BEFORE PROCEEDING WITH THE WORK.
 - ALL LEVELS RELATIVE TO AUSTRALIAN HEIGHT DATUM.
 - DO NOT SCALE DRAWINGS.
 - USE FIGURED DIMENSIONS ONLY.

Legend



1 SECTION Section At Building A-D
1:200



2 SECTION Section At Buildings G-J
1:200



Issued under the Environmental Planning and Assessment Act 1979

Application No: SSD-10340-MOD-2

Sheet No: 13 of 13

Granted: 16 June 2023

Signed: TG

SSDA03	2/9/22	S455 Modification 2	AWY	
SSDA02	29/5/20	S455 Modification	AWY	
rev	date	name	by	chk

fjmt studio architecture interiors landscape urban community
sydney melbourne uk
Level 5, 70 King Street +61 2 9251 7077 www.fjmtstudio.com



project
Fort Street Public School
Observatory Hill
Sydney NSW 2000

title
4000 1:200 Sections
Sections 4

scale 1:200 @ A1 first issued 30/9/19

project code sheet no. revision
FSS DA-4004 SSDA03

Section 4.55 Modification 2 - SSD-10340-Mod-2