

Estella Public School

Day 1 Term 1 2021



School entry at Estella Public School

Welcome to your school

The first day of school for Estella Public School is here. We're excited your new facilities are ready for you to use. Your new school includes:



16 flexible
learning spaces



A new library
and hall



A covered outdoor
learning area (COLA)



Administration and
staff facilities

Thank you for your patience during construction. We are thrilled to deliver this project for your school community and hope you enjoy your new spaces.



Message from your Principal

Welcome to our new and prospective families.

Our school will provide an inclusive, caring and dynamic environment where our experienced and dedicated staff are committed to providing a quality, individualised education for all our students that inspires and challenges them to achieve their learning potential.

Students, staff, parents and the wider community of Estella Public School will work collaboratively with the aim of enhancing the learning of each child and to develop positive, productive citizens of the future.

There will be a strong emphasis on continuous student improvement and students are encouraged to strive for excellence and view learning as a lifelong process. While the development of literacy and numeracy skills is our core business, we pride ourselves on providing opportunities in all areas of learning for our students to achieve personal success.

Our Estella Public School staff and community are committed to:

- ensuring our students are known, valued and cared for
- ensuring all students are actively engaged in relevant and challenging future focused learning
- providing students with innovative educational experiences which promote lifelong learning empowering them to become creative, responsible and productive community members

- upholding high expectations of self, behaviour and academic achievement
- providing and implementing quality teaching practices that enable high student engagement and the achievement of positive, individualised learning outcomes and
- fostering strong community partnerships and maintain collegial partnerships between our local schools.

We welcome all our new families and encourage prospective families to contact us to gain a more comprehensive overview of what our school can offer your child as they embark on their educational journey.



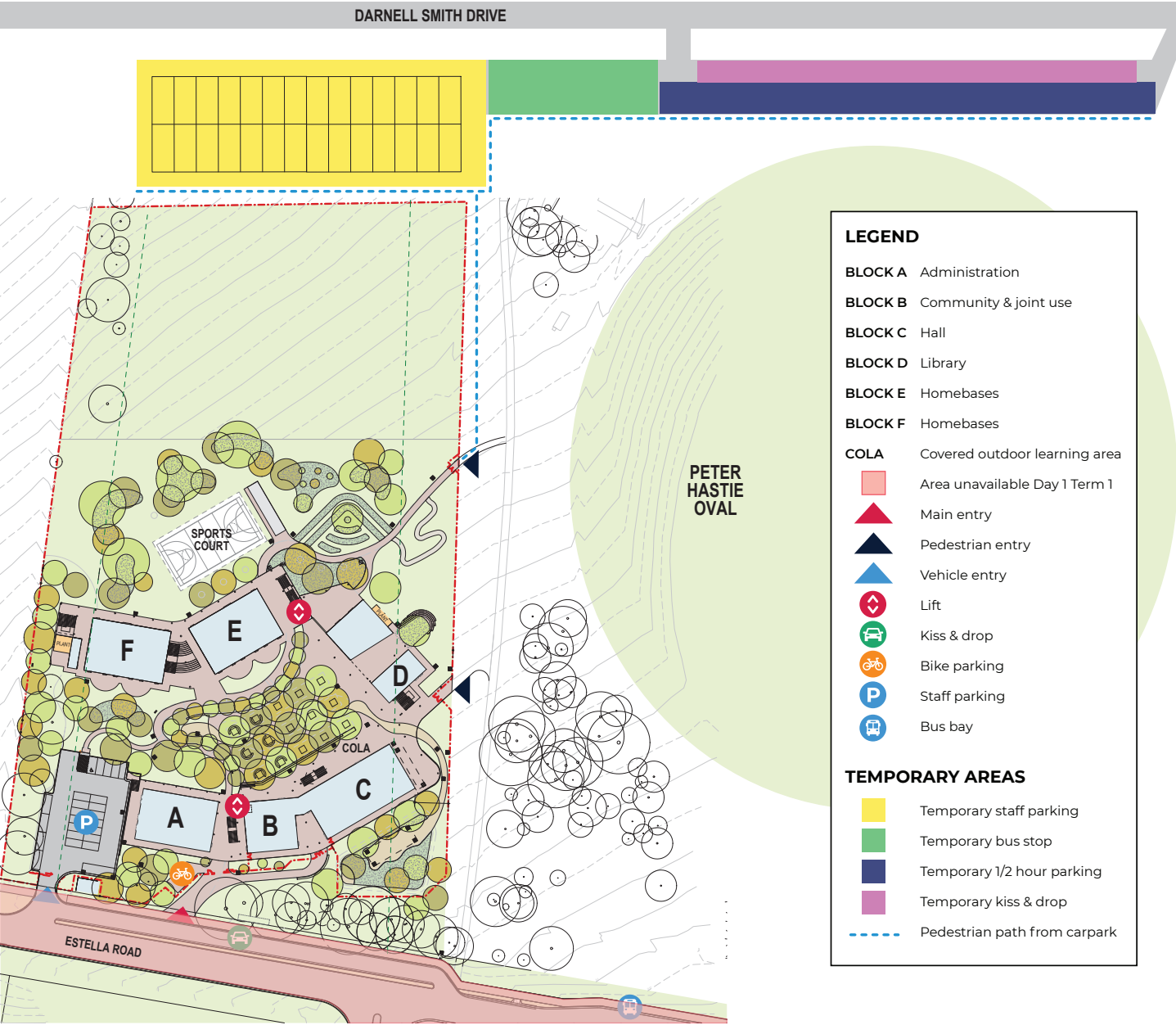
Tracy Delaney, Principal

Innovative Learning Environments

This exciting project has delivered innovative learning environments for the next generation of young minds. These environments offer flexibility where teachers can provide opportunities to:

- adapt to accommodate small or large groups
- include learning neighbourhoods with flexible spaces that allow students to use technology in a variety of settings
- enhance skills in collaboration, communication, critical thinking, problem solving and creativity.

Layout of Estella Public School





Frequently asked questions

What will be delivered at the new Estella Public School?

- 16 flexible learning spaces
- a new library and hall
- a covered outdoor learning area (COLA)
- administration and staff facilities.

Will there be a canteen?

Estella Public School will have a canteen. The canteen will operate under a licence agreement and will not be run by a Parents and Citizens organisation and volunteers.

Will there be any Out of School Hours Care?

Their Care has been appointed as Estella Public School's OSHC provider under a twelve month licence. At the completion of the twelve month period it will go out to public tender. The twelve month licence agreement has enabled us to establish our OSHC facility earlier to support our school community.

What are the school start, finish and break times?

School Operating Times	9:00am – 3:00pm
Morning Supervision	8:40am
Morning Session	9:00am – 11:00am
Lunch Eating Time	11:00am – 11:20am
Lunch Playtime	11:20am – 1:10pm
Middle Session	1:10pm – 1:20pm
Afternoon recess	1:20pm – 2:00pm
Afternoon Session	2:00pm – 3:00pm
School Finishes	3:00pm
School Office Hours	8:45am – 3:15pm

When will the school kiss and drop and bus bay be available on Estella Road?

The kiss and drop and bus bay on Estella Road is anticipated to be available early February 2021 at the completion of Estella Road.

A temporary kiss and drop, bus bay and parking area is available in the Charles Sturt University carpark at the back of the school grounds, off Darnell Smith Drive in Estella. Students will need to follow the footpath between Peter Hastie Oval and the school to the gated entry at the side of the school. Please refer to the map overleaf for details.

Contact us

For more information about this project contact School Infrastructure NSW:

Website: schoolinfrastructure.nsw.gov.au

Email: schoolinfrastructure@det.nsw.edu.au

Phone: 1300 482 651

For information about school activities and operations, contact the school directly:

Principal: Tracy Delaney

Website: estella-p.schools.nsw.gov.au

Email: estella-p.school@det.nsw.edu.au

Phone: 02 5958 7300