



Artist impression of the new primary school in Estella, Wagga Wagga

## Next steps

Early works including bulk earthworks will begin in April 2020.

We will continue to work with the contractor, Hansen Yuncken, to ensure any disruption to our neighbours is kept to a minimum.

## Stay informed



### Website

Stay up to date by visiting the School Infrastructure NSW website [schoolinfrastructure.nsw.gov.au](https://schoolinfrastructure.nsw.gov.au)



### Email

Contact the Community Engagement team by emailing [schoolinfrastructure@det.nsw.edu.au](mailto:schoolinfrastructure@det.nsw.edu.au)



### Phone

Contact us between 9am and 5pm, Monday to Friday on **1300 482 651**

# New primary school in Estella, Wagga Wagga

Information pack

March 2020



Artist impression of the new primary school in Estella, Wagga Wagga

The new primary school in Estella, Wagga Wagga, is designed to accommodate up to 480 students from years K-6. The site for the new school will be integrated with the Charles Sturt University campus. The school will have:



**16** flexible learning spaces to facilitate new ways of teaching and learning



A library



A hall



A canteen



Covered outdoor learning areas (COLA)



Outdoor multipurpose activity areas



Administration and staff facilities



## Investing in our schools

The NSW Government is investing \$6.7 billion over four years to deliver more than 190 new and upgraded schools to support communities across NSW. In addition, a record \$1.3 billion is being spent on school maintenance over five years. This is the largest investment in public education infrastructure in the history of NSW.

## Project status

The detailed design for the school is now complete. The Development Application (DA) for early works has been approved by Wagga Wagga City Council. We are waiting to receive planning approval for the main works.

## Frequently asked questions

### What will the new school look like?

The new school will have:

- 16 flexible learning spaces to facilitate new ways of teaching and learning
- A library, hall, canteen and covered outdoor learning area (COLA)
- Outdoor multipurpose activity areas
- Administration and staff facilities.

### When will construction start?

From April 2020, site establishment and early works including bulk earthworks will begin.

Work hours are 7:00am to 6:00pm, Monday to Friday and 8:00am to 1:00pm on Saturdays. There will be no work on Sundays or public holidays.

Check the School Infrastructure project webpage at <https://www.schoolinfrastructure.nsw.gov.au/> for future updates.

### Will street parking be impacted during construction?

There will be minimal impacts to street parking as there will be parking available on site for workers. The impact of our project on the local community is considered throughout the planning phase. We work with councils and local communities to identify issues and put in place measures to mitigate the effects.

### When will the school be complete?

The project is scheduled for completion in early 2021. We are planning to start main works construction once we receive planning approval.

### What is the catchment area?

The catchment area will be determined closer to the opening of the school. School catchments, once decided, will be available on the School Finder website <https://my.education.nsw.gov.au/school-finder>.

### Will the new school catchment area affect the neighbouring enrolment areas?

If changes to neighbouring school catchment boundaries/enrolment areas are needed, the Department of Education will work closely with school staff and communities to inform them and help them plan for any boundary realignments.

### How will the school integrate with Charles Sturt University?

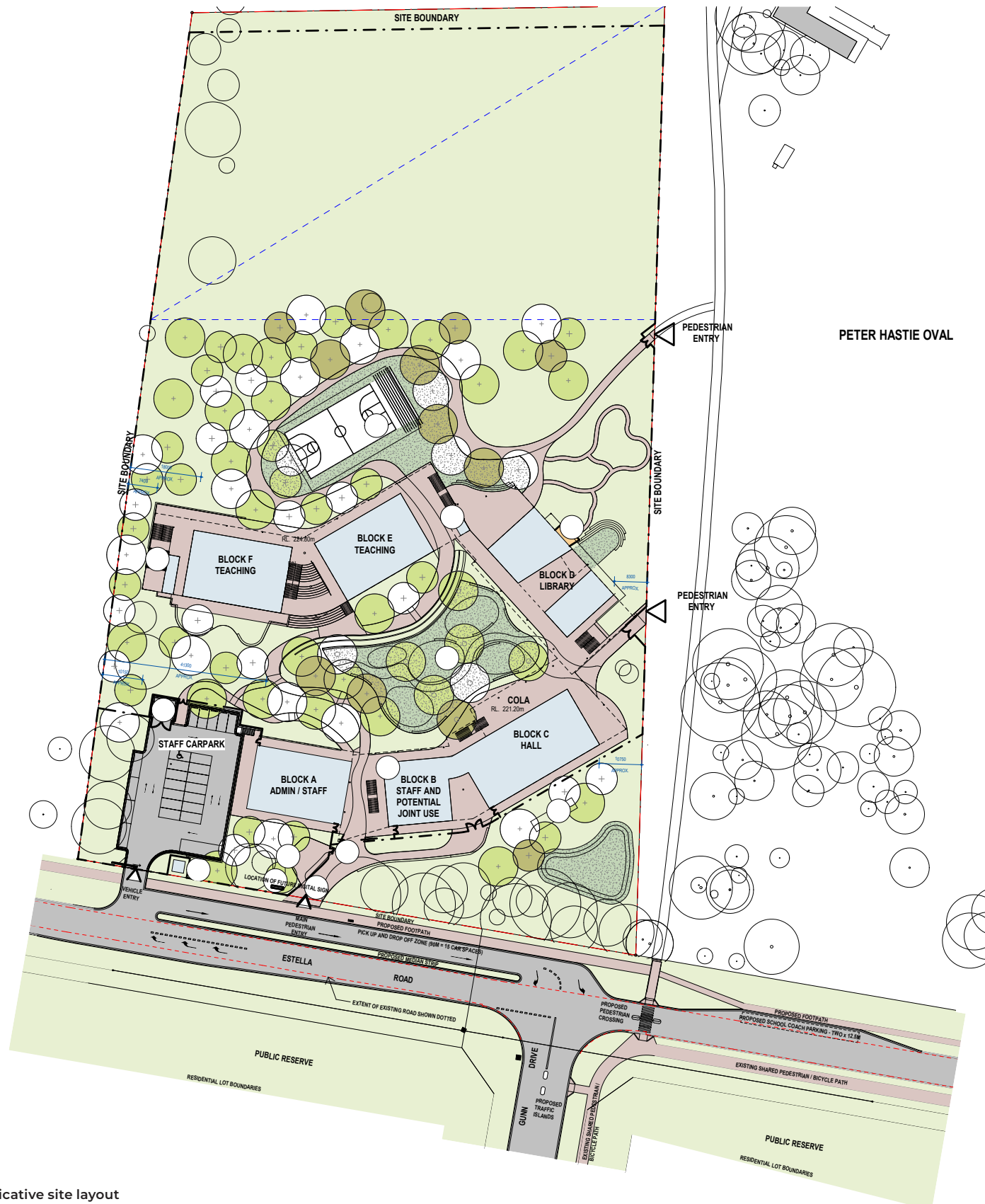
Joint use arrangements with Wagga Wagga City Council and Charles Sturt University are currently being determined.

### What does 'joint use' mean?

'Joint use' is where the department and other parties make significant investments (land and/or capital) in new facilities, upgrading facilities or maintaining facilities. The asset is typically shared between the school and the other parties over an extended period of time, or the lifetime of the asset. These projects are voluntary and intended to be of mutual benefit to all parties.

### How can I find out more information as the project progresses?

We will provide information through information sessions, project updates and the project website.



Indicative site layout



Artist impression of a new learning space at the new primary school in Estella, Wagga Wagga