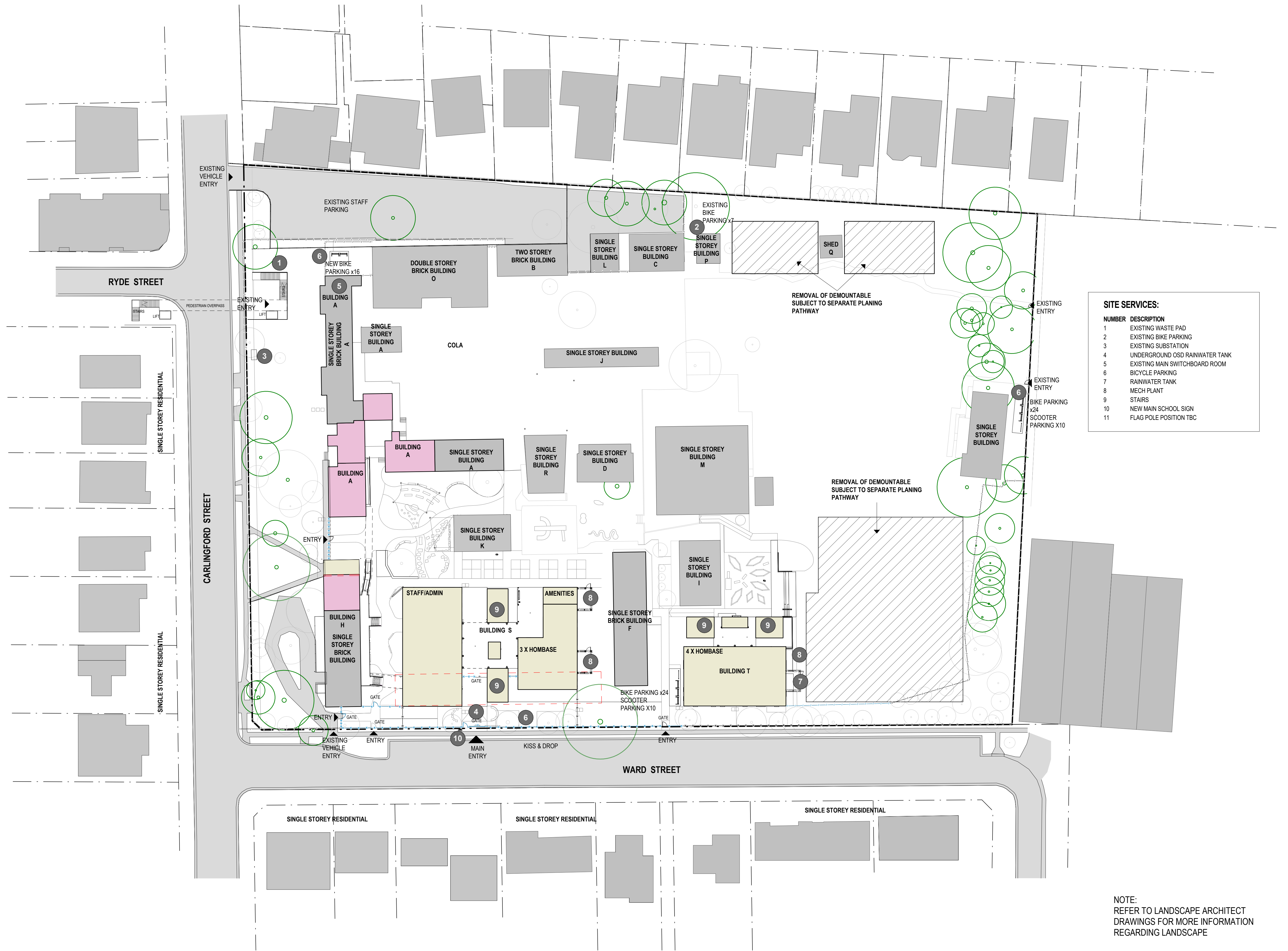


17/08/2021 7:16:21 PM



AMENDMENTS			
REV	BY	DATE	DESCRIPTION
A	HS	13/04/2021	ISSUE FOR DRAFT SSDA
B	HS	20/04/2021	ISSUE FOR SSDA TEST OF ADEQUACY
C	SZ	02/07/2021	ISSUE FOR RTS
D	HS	17/08/2021	ISSUE FOR RTS

LEGEND	
	TREE
	SIGNIFICANT TREE
	NEW 2.150m FENCE
	EXISTING FENCE
	EXISTING ITEM TO BE DEMOLISHED
	EXISTING BUILDING
	PROPOSED BUILDING
	ALTERATIONS TO EXISTING BUILDINGS
	LANDSCAPE SCOPE



PEDAVOLI ARCHITECTS PTY LTD
LEVEL 2
458-468 WATTLE STREET
ULTIMO NSW 2007 AUSTRALIA
TEL: +61 2 9291 0000
WEB: www.pedavoli.com.au
NOMINATED ARCHITECT:
VINCE PEDAVOLI
NSW ARB No. 5045



DRAWING NAME

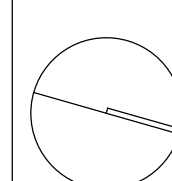
SITE PLAN

PROJECT

EPPING WEST PUBLIC SCHOOL

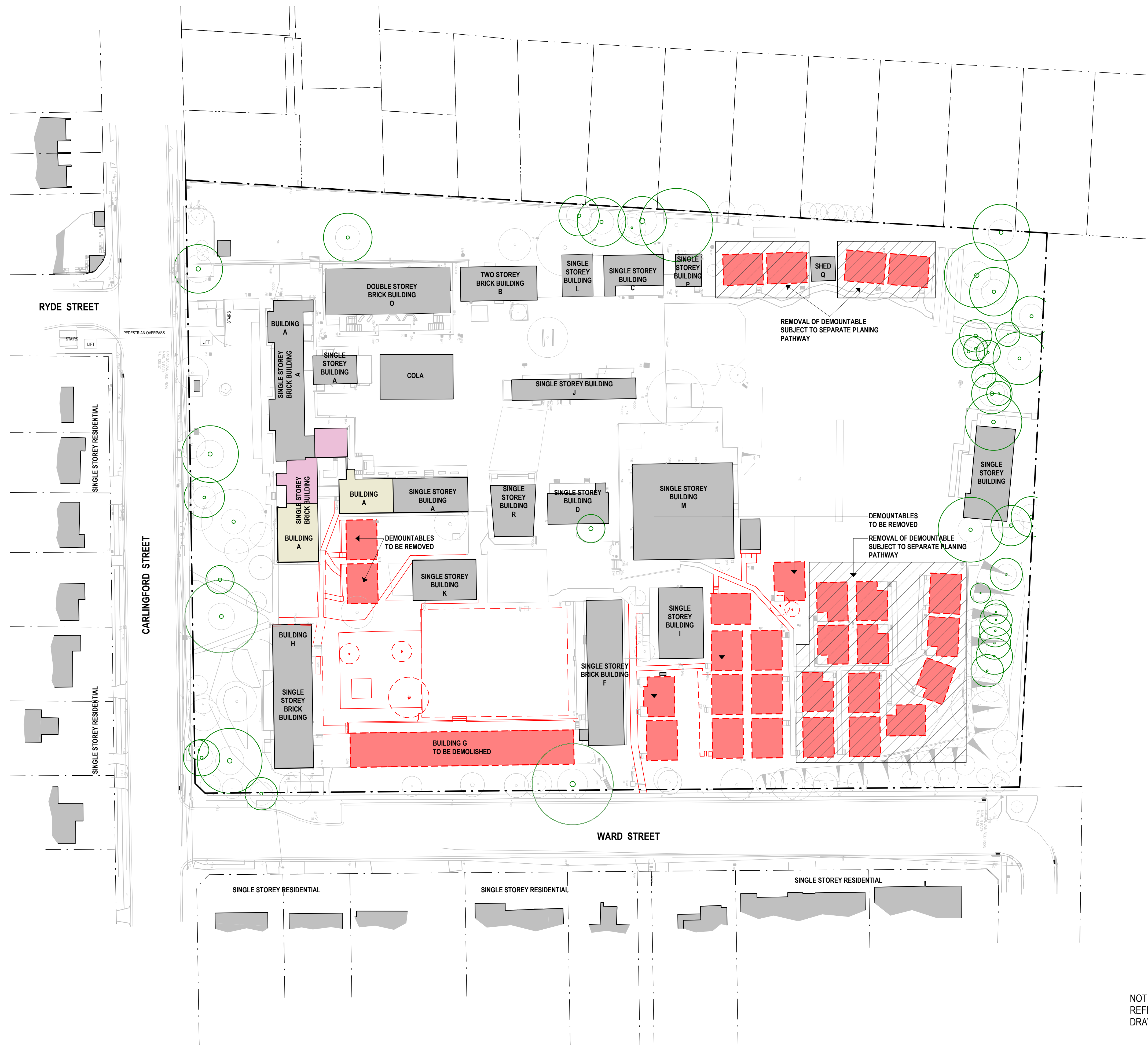
96 CARLINGFORD RD EPPING NSW

NORTH



5000 10000 15000 20000 25000 50000			
SCALE 1 : 500 @ A1			
17 AUGUST 2021			
PROJECT	PHASE	SERIES NUMBER	REVISION
EPPW - SSDA - 001			D






7/07/2021 10:03:01 AM



NOTE:
REFER TO LANDSCAPE ARCHITECT
DRAWINGS FOR MORE INFORMATION

[illegible]

LEGEND

-  EXISTING PAVING/CONCRETE FLOOR TO BE DEMOLISHED
 EXISTING STRUCTURE TO BE DEMOLISHED
 HIGH SIGNIFICANT TREE TO BE RETAINED
 TREES TO BE REMOVED (AFTER ARBORIST REPORT)
 TREES TO BE RETAINED



PEDAVOLI ARCHITECTS PTY LTD
LEVEL 2,
458-468 WATTLE STREET
ULTIMO NSW 2007 AUSTRALIA
TEL: +61 2 9291 0000
WEB: www.pedavoli.com.au
NOMINATED ARCHITECT:
VINCE PEDAVOLI
NSW ARB No. 5045

PEDAVOLI
ARCHITECTS

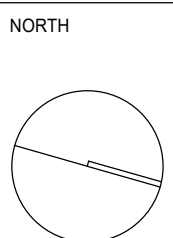
DRAWING NAME

DEMOLITION PLAN

PROJECT

EPPING WEST PUBLIC SCHOOL

96 CARLINGFORD RD EPPING NSW



5000 10000 15000 20000 25000 50000
SCALE 1 : 500 @ A1
02 JULY 2021
PROJECT PHASE SERIES NUMBER REVISION
EPPW - SSDA - 003 C

17/08/2021 7:18:17 PM



REV	BY	DATE	DESCRIPTION
A	HS	13/04/2021	ISSUE FOR DRAFT SSDA
B	HS	20/04/2021	ISSUE FOR SSDA TEST OF ADEQUACY
C	SZ	02/07/2021	ISSUE FOR RTS
D	HS	17/08/2021	ISSUE FOR RTS

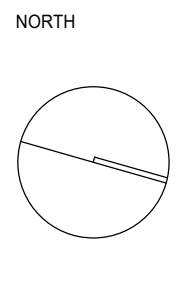


PEDAVOLI ARCHITECTS PTY LTD
LEVEL 2
459-468 WATTLE STREET
ULTIMO NSW 2007 AUSTRALIA
TEL: +61 2 9291 0000
WEB: www.pedavoli.com.au
NOMINATED ARCHITECT:
VINCE PEDAVOLI
NSW ARB NO. 5045



DRAWING NAME
COMPOSITE PLAN - GROUND FLOOR

PROJECT
EPPING WEST PUBLIC SCHOOL
96 CARLINGFORD RD EPPING NSW



2000	4000	6000	8000	10000	20000
SCALE 1 : 200 @ A1					
17 AUGUST 2021					
PROJECT	PHASE	SERIES NUMBER	REVISION		
EPPW - SSDA - 011			D		

17/08/2021 7:20:06 PM

AMENDMENTS			
REV	BY	DATE	DESCRIPTION
A	HS	13/04/2021	ISSUE FOR DRAFT SSDA
B	HS	20/04/2021	ISSUE FOR SSDA TEST OF ADEQUACY
C	SZ	02/07/2021	ISSUE FOR RTS
D	HS	17/08/2021	ISSUE FOR RTS



PEDAVOLI ARCHITECTS PTY LTD
LEVEL 2
459-468 WATTLE STREET
ULTIMO NSW 2007 AUSTRALIA
TEL: +61 2 9291 0000
WEB: www.pedavoli.com.au
NOMINATED ARCHITECT:
VINCE PEDAVOLI
NSW ARB No. 5045



DRAWING NAME

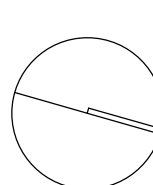
COMPOSITE PLAN - FIRST FLOOR

PROJECT

EPHING WEST PUBLIC SCHOOL

96 CARLINGFORD RD EPPING NSW

NORTH




2000 4000 6000 8000 10000 20000			
SCALE 1 : 200 @ A1			
17 AUGUST 2021			
PROJECT	PHASE	SERIES NUMBER	REVISION
EPPW - SSDA - 012			D



17/08/2021 8:08:57 PM

AMENDMENTS			
REV	BY	DATE	DESCRIPTION
A	HS	13/04/2021	ISSUE FOR DRAFT SSDA
B	HS	20/04/2021	ISSUE FOR SSDA TEST OF ADEQUACY
C	SZ	02/07/2021	ISSUE FOR RTS
D	HS	17/08/2021	ISSUE FOR RTS

HANSEN YUNCKEN



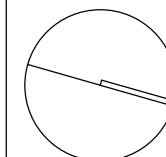
PEDAVOLI ARCHITECTS PTY LTD

LEVEL 2
459-468 WATTLE STREET
ULTIMO NSW 2007 AUSTRALIA
TEL: +61 2 9291 0000
WEB: www.pedavoli.com.au
NOMINATED ARCHITECT:
VINCE PEDAVOLI
NSW ARB No. 5045

DRAWING NAME
COMPOSITE PLAN - SECOND FLOOR

PROJECT
EPPING WEST PUBLIC SCHOOL
96 CARLINGFORD RD EPPING NSW

NORTH



2000 4000 6000 8000 10000 20000

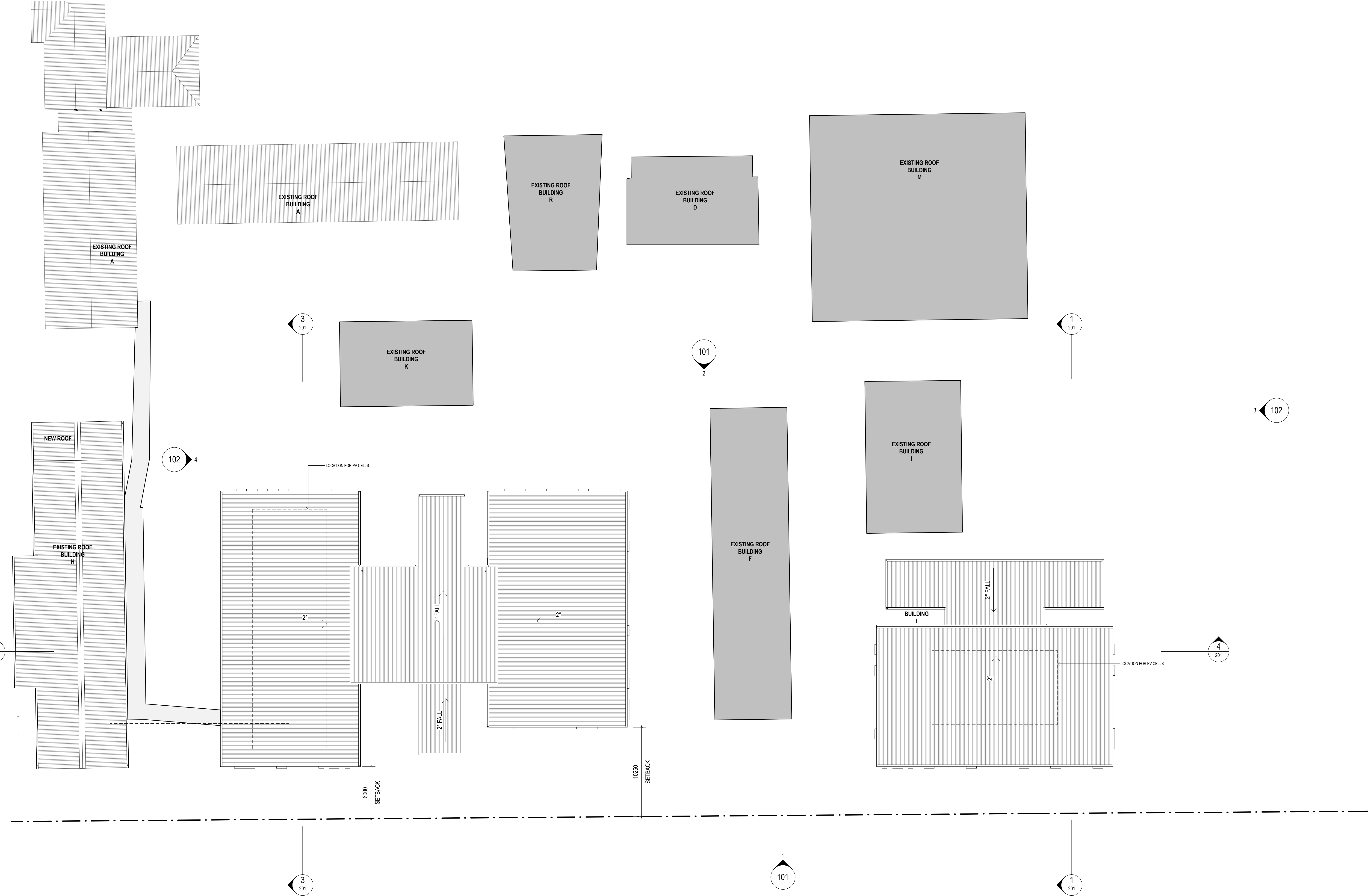
SCALE 1 : 200 @ A1

17 AUGUST 2021

PROJECT	PHASE	SERIES NUMBER	REVISION
EPPW - SSDA - 013			D



7/07/2021 10:09:08 AM



AMENDMENTS			
REV	BY	DATE	DESCRIPTION
A	HS	13/04/2021	ISSUE FOR DRAFT SSDA
B	HS	20/04/2021	ISSUE FOR SSDA TEST OF ADEQUACY
C	SZ	02/07/2021	ISSUE FOR RTS

HANSEN YUNCKEN

**NSW**
GOVERNMENT

Education

PEDAVOLI ARCHITECTS PTY LTD

LEVEL 2
459-468 WATTLE STREET
ULTIMO NSW 2007 AUSTRALIA

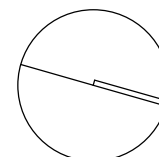
TEL: +61 2 9291 0000
WEB: www.pedavoli.com.au

NOMINATED ARCHITECT:
VINCE PEDAVOLI
NSW ARB No. 5045

DRAWING NAME
COMPOSITE PLAN - ROOF PLAN

PROJECT
EPPING WEST PUBLIC SCHOOL
96 CARLINGFORD RD EPPING NSW

NORTH



2000 4000 6000 8000 10000 20000

SCALE 1 : 200 @ A1

02 JULY 2021

PROJECT	PHASE	SERIES NUMBER	REVISION
EPPW - SSDA - 021			C

17/08/2021 7:23:24 PM



EAST ELEVATION (WARD ST) 1
1:200 011



WEST ELEVATION 2
1:200 011

REV	BY	DATE	DESCRIPTION
A	HS	13/04/2021	ISSUE FOR DRAFT SSDA
B	HS	20/04/2021	ISSUE FOR SSDA TEST OF ADEQUACY
C	SZ	02/07/2021	ISSUE FOR RTS
D	HS	17/08/2021	ISSUE FOR RTS



PEDAVOLI ARCHITECTS PTY LTD
LEVEL 2
459-468 WATTLE STREET
ULTIMO NSW 2007 AUSTRALIA
TEL: +61 2 9291 0000
WEB: www.pedavoli.com.au
NOMINATED ARCHITECT:
VINCE PEDAVOLI
NSW ARB No. 5045

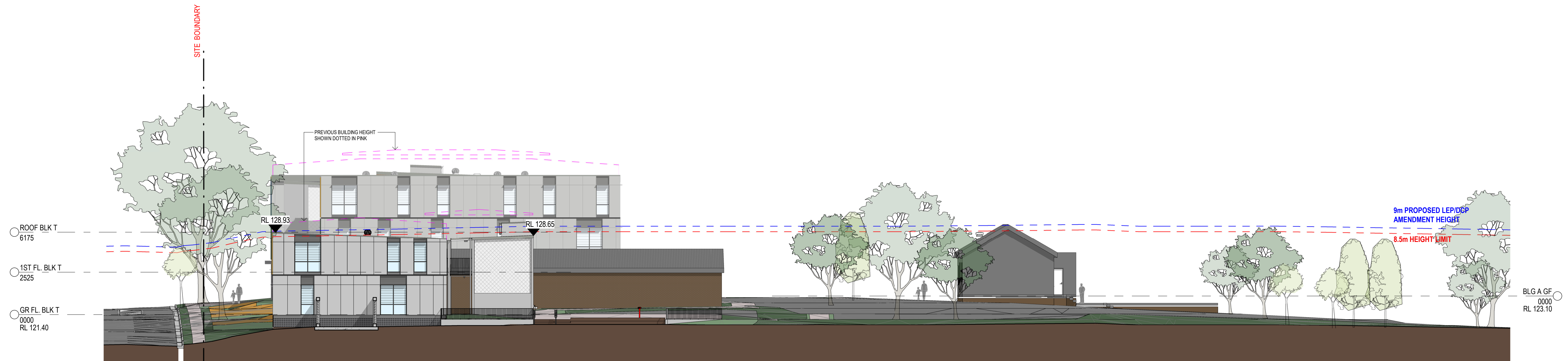


EAST & WEST ELEVATIONS

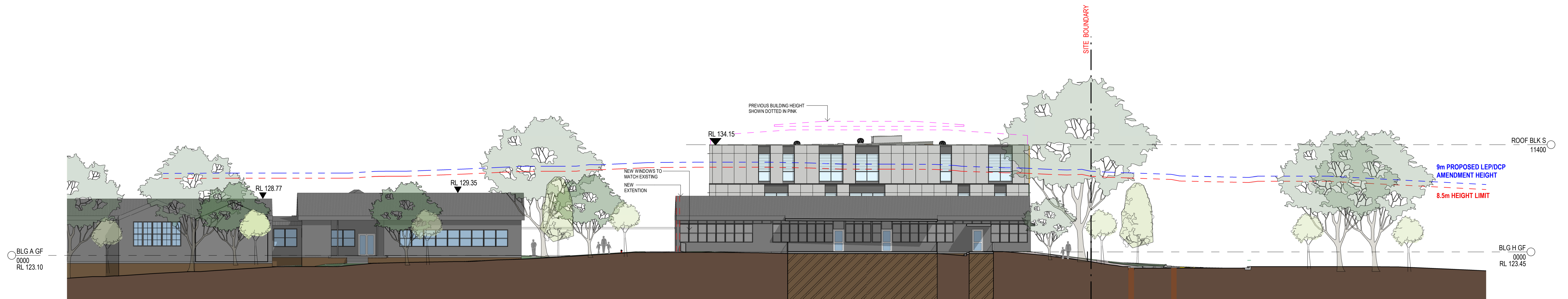
EPHING WEST PUBLIC SCHOOL

96 CARLINGFORD RD EPPING NSW

2000	4000	6000	8000	10000	20000
SCALE 1:200 @ A1					
17 AUGUST 2021					
PROJECT	PHASE	SERIES NUMBER	REVISION		
EPWP - SSDA - 101			D		



NORTH ELEVATION 3
1:200 011



SOUTH ELEVATION 4
1:200 011

17/08/2021 7:25:20 PM

AMENDMENTS			
REV	BY	DATE	DESCRIPTION
A	HS	13/04/2021	ISSUE FOR DRAFT SSDA
B	HS	20/04/2021	ISSUE FOR SSDA TEST OF ADEQUACY
C	SZ	02/07/2021	ISSUE FOR RTS
D	HS	17/08/2021	ISSUE FOR RTS



PEDAVOLI ARCHITECTS PTY LTD
LEVEL 2
458-468 WATTLE STREET
ULTIMO NSW 2007 AUSTRALIA
TEL: +61 2 9291 0000
WEB: www.pedavoli.com.au
NOMINATED ARCHITECT:
VINCE PEDAVOLI
NSW ARB No. 5045



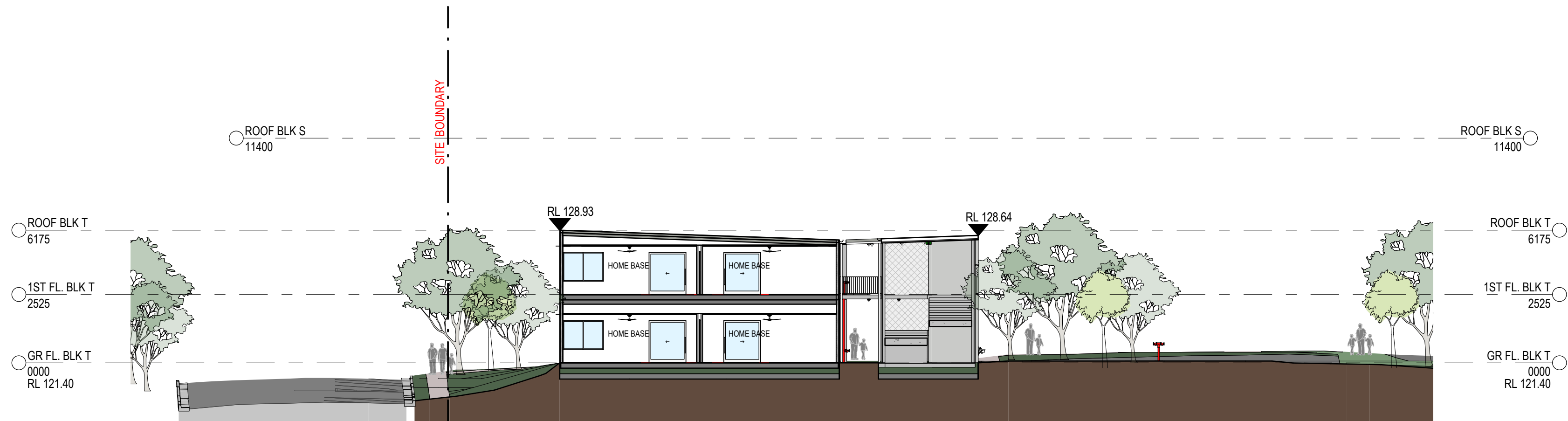
NORTH & SOUTH ELEVATIONS

EPPING WEST PUBLIC SCHOOL

96 CARLINGFORD RD EPPING NSW

2000 4000 6000 8000 10000 20000			
SCALE 1:200 @ A1			
17 AUGUST 2021			
PROJECT	PHASE	SERIES NUMBER	REVISION
EPPW - SSDA - 102			D

7/07/2021 10:11:00 AM



SECTION 1
1:200 011



SECTION 3
1:200 011



SECTION 4
1:200 011

REV	BY	DATE	DESCRIPTION
A	HS	13/04/2021	ISSUE FOR DRAFT SSDA
B	HS	20/04/2021	ISSUE FOR SSDA TEST OF ADEQUACY
C	SZ	02/07/2021	ISSUE FOR RTS



PEDAVOLI ARCHITECTS PTY LTD
LEVEL 2
458-468 WATTLE STREET
ULTIMO NSW 2007 AUSTRALIA
TEL: +61 2 9291 0000
WEB: www.pedavoli.com.au
NOMINATED ARCHITECT:
VINCE PEDAVOLI
NSW ARB No. 5045



SECTIONS

EPPING WEST PUBLIC SCHOOL

96 CARLINGFORD RD EPPING NSW

2000	4000	6000	8000	10000	20000
SCALE 1:200 @ A1					
02 JULY 2021					
PROJECT	PHASE	SERIES NUMBER	REVISION		
EPPW - SSDA - 201			C		



1. AWNING SOFFIT - ALUMINIUM BATTENS
2. AWNING SOFFIT - ALUMINIUM BATTENS
3. BRICKS
4. CFC - BUILDING CLADDING
5. CFC - BUILDING CLADDING
6. REFERENCE EXISTING BUILDING A
7. ACCENT COLOUR - WINDOW REVEAL
8. ACCENT COLOUR - WINDOW REVEAL
9. ACCENT COLOUR - WINDOW REVEAL
10. ACCENT COLOUR - WINDOW REVEAL
11. ROOFING - COLOURBOND
12. SUNSHADE & WINDOW FRAME
13. CONCRETE COLUMNS & STAIRS
14. STAIR PROTECTION - WOVEN METAL MESH



VIEW OF BUILDING S FROM WARD STREET



VIEW OF THE ENTRY (BUILDING S) FROM WARD STREET



VIEW OF BUILDINGS T & S FROM WARD STREET

17/08/2021 7:25:43 PM

AMENDMENTS			
REV	BY	DATE	DESCRIPTION
A	HS	13/04/2021	ISSUE FOR DRAFT SSDA
B	HS	20/04/2021	ISSUE FOR SSDA TEST OF ADEQUACY
C	SZ	02/07/2021	ISSUE FOR RTS
D	HS	17/08/2021	ISSUE FOR RTS



PEDAVOLI ARCHITECTS PTY LTD
LEVEL 2
458-468 WATTLE STREET
ULTIMO NSW 2007 AUSTRALIA
TEL: +61 2 9291 0000
WEB: www.pedavoli.com.au
NOMINATED ARCHITECT:
VINCE PEDAVOLI
NSW ARB No. 5045

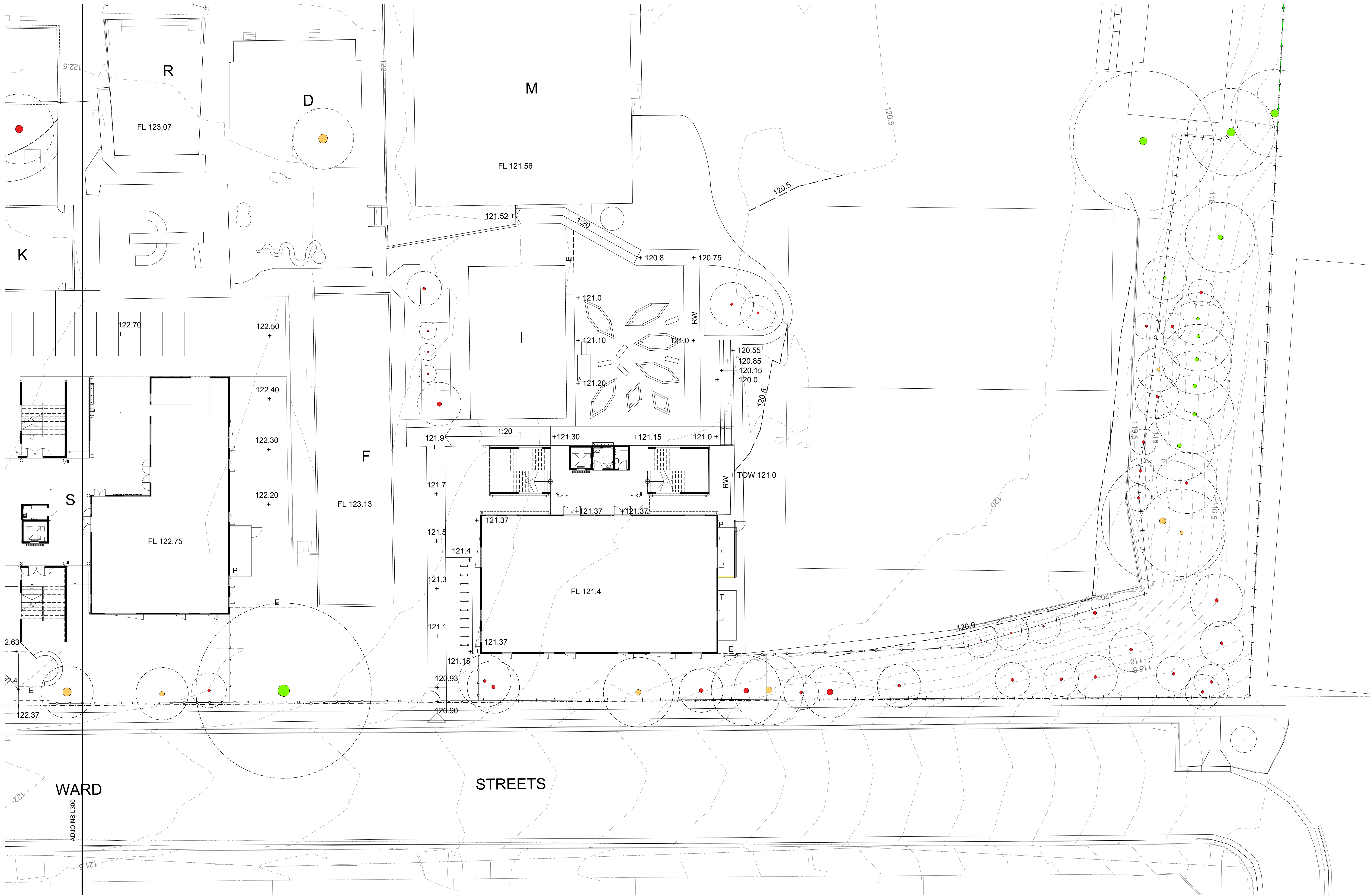


RENDERS AND MATERIAL BOARD

EPPING WEST PUBLIC SCHOOL

96 CARLINGFORD RD EPPING NSW

SCALE @ A1			
17 AUGUST 2021			
PROJECT	PHASE	SERIES NUMBER	REVISION
EPPW - SSDA - 401			D



AMENDMENTS			
REV	BY	DATE	DESCRIPTION
A	YP	22.04.2021	ISSUED FOR DARFT SSDA
B	YP	23.04.2021	ISSUED FOR DARFT SSDA
C	YP	28.04.2021	ISSUED FOR SSDA
D	YP	07.07.2021	ISSUED FOR RTS



TaylorBrammer
TAYLOR BRAMMER LANDSCAPE ARCHITECTS PTY LTD
AUSTINER STUDIO
28 Moore St | PO Box 3064 Audubon, NSW, 2511 E: info@taylorbrammer.com.au T: 612 9387 8855
Copyright © Taylor Brammer Landscape Architects Pty Ltd. ABN 61 100 720 985

DRAWING NAME
LANDSCAPE: GRADING PLAN

PROJECT
**EPPING WEST PUBLIC SCHOOL
ALTERATIONS AND ADDITIONS
96 CARLINGFORD RD EPPING NSW**

NORTH

2000 4000 6000 8000 10000 20000

SCALE 1 : 200 @ A1

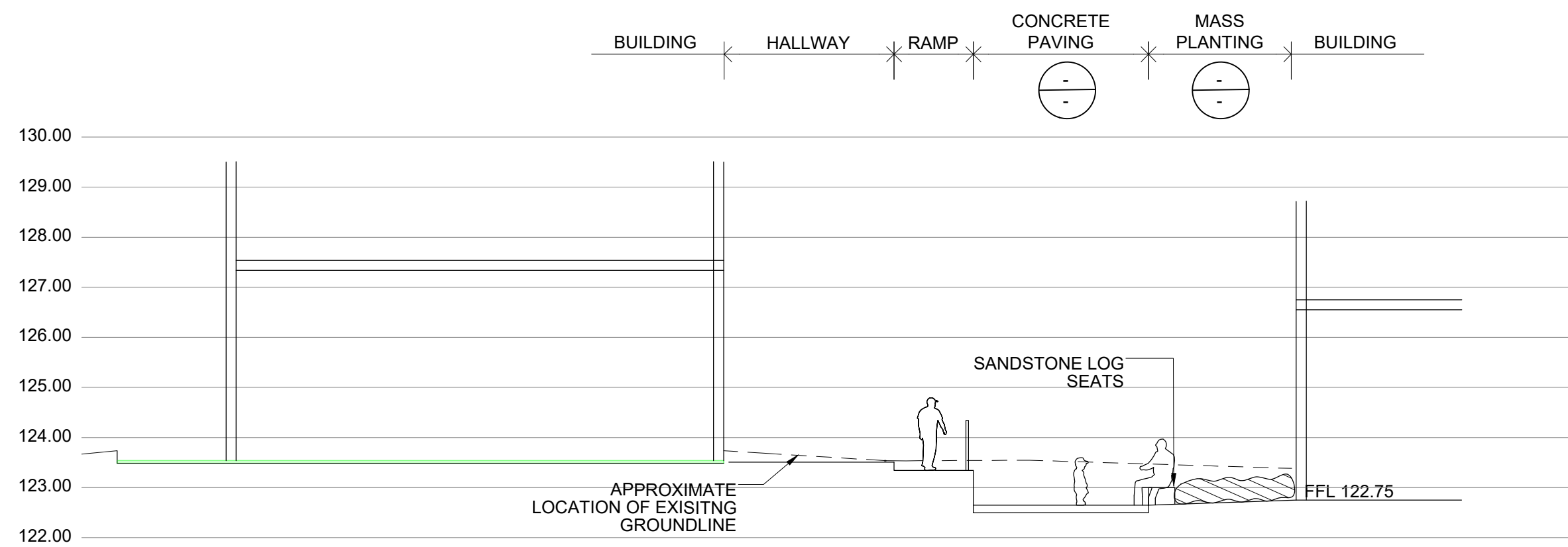
07 JULY 2021

PROJECT	DISCIPLINE	PHASE	SERIES NUMBER	REVISION
EPPW - LA - SSDA - L301			D	

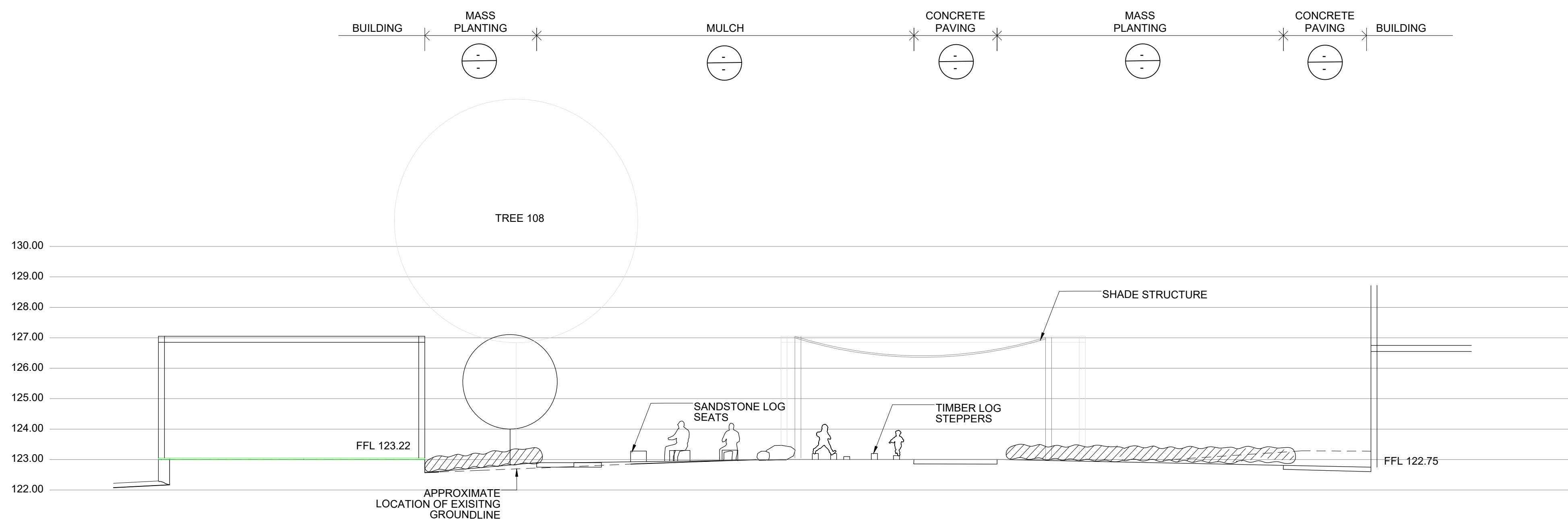
PLANT LIST						
SYMBOL	BOTANICAL NAME	COMMON NAME	QUANTITY	SIZE	HEIGHT X WDMTH	NATIVE SPECIES
CUMBERLAND PLAIN WOODLAND						
TREES (TO BE CONSIDERED UNDER A SEPARATE PLANNING PATHWAY)						
BMJ	<i>Backhousia myrtifolia</i>	Grey Myrtle	9	200 Pot	6 x 4m	y
MLJ	<i>Melaleuca linariifolia</i>	Snow in Summer	9	200 Pot	7 x 5m	y
SHRUBS (TO BE CONSIDERED UNDER A SEPARATE PLANNING PATHWAY)						
BSP	<i>Banksia spinulosa</i>	Heath Banksia	20	150 Pot	3 x 2m	y
BOB	<i>Breynia oblongifolia</i>	Coffee Bush	20	150 Pot	2 x 2m	y
CSU	<i>Callistemon subulatus</i>	Bottlebrush	20	150 Pot	2 x 2m	y
CTO	<i>Clerodendrum tomentosum</i>	Hairy Lilly Bush	20	150 Pot	4 x 3m	y
DFA	<i>Dodonaea falcata</i>	Hop Bush	20	150 Pot	2 x 2m	y
GJU	<i>Grevillea juniperina</i>	Juniper Grevillea	20	150 Pot	2 x 2m	y
GSE	<i>Grevillea sericea</i>	Pink Spider Flower	20	150 Pot	2 x 1m	y
ODI	<i>Ozothamnus diosmifolius</i>	Sago	20	150 Pot	2 x 1m	y
GRASSES (TO BE CONSIDERED UNDER A SEPARATE PLANNING PATHWAY)						
DLO	<i>Dianella longifolia</i>	Blueberry Lily	375	75 Tube	1 x 0.5m	y
DREV	<i>Dianella revoluta</i>	Blue Flax-Lily	375	75 Tube	0.4 x 0.3m	y
DREP	<i>Dichondra repens</i>	Kidney Weed	375	75 Tube	0.14 x 0.5m	y
MST	<i>Microlaena stipoides</i>	Weeping Grass	375	75 Tube	0.25 x .5m	y
TAU	<i>Themeda australis</i>	Kangaroo Grass	375	75 Tube	1.5 x 0.5m	y
WST	<i>Wahlenbergia stricta</i>	Australian Bluebell	375	75 Tube	0.4 x 0.4m	y
GENERAL PLANTING						
INDIGENOUS TREES						
ASM	<i>Acmena smithii</i>	Lilly Pilly	2	200 Pot	5 x 3m	y
ALL	<i>Allocasuarina littoralis</i>	Black Sheoak	2	200 Pot	10 x 4m	y
BIN	<i>Banksia integrifolia</i>	Coast Banksia	2	200 Pot	10 x 6m	y
CGU	<i>Ceratopetalum gummiferum</i>	Christmas Bush	2	200 Pot	5 x 3m	y
ERE	<i>Elaeocarpus reticulatus</i>	Blueberry Ash	2	200 Pot	8 x 6m	y
TLA	<i>Tristanopsis laurina</i>	Water Gum	2	200 Pot	12 x 6m	y
DECIDUOUS TREES						
ASS	<i>Acer 'autumn blaze'</i>	Freeman Maple	3	75L	15 x 7m	
FPUR	<i>Fraxinus 'urbanite'</i>	Ash	3	75L	11 x 8m	
PCA	<i>Pyrus 'capital'</i>	Ornamental Pear	3	75L	12 x 3m	
SCREENING PLANTS						
ACS	<i>Acmena allyn magic</i>	Dwarf Lilly Pilly	35	150 Pot	3 x 2m	y
AFI	<i>Acmena Firescreen</i>	New Zealand Christmas Bush	35	150 Pot	5 x 5m	
GRH	<i>Grevillea 'Superb'</i>	Grevillea	35	150 Pot	2 x 3m	y
MLS	<i>Melaleuca linariifolia 'snow storm'</i>	Snowstorm	35	150 Pot	3 x 3m	y
MUP	<i>Muraya paniculata</i>	Mock Orange	35	150 Pot	3 x 3m	y
SNS	<i>Syzygium Northern Select</i>	Scrub Cherry	35	150 Pot	5 x 1.5m	y
VOD	<i>Viburnum odoratissimum</i>	Sweet Viburnum	35	150 Pot	6 x 4m	
SMALL/MEDIUM SHRUBS						
GGJ	<i>Callistemon 'Little John'</i>	Bottlebrush	55	150 Pot	1 x 1m	y
HDD	<i>Hebe diosmifolia Dwarf</i>	White Veronica	55	150 Pot	1 x 1m	
NDN	<i>Nandina domestica 'Nana'</i>	Sacred Bamboo	55	150 Pot	0.6 x 0.6m	y
LDB	<i>Russelia equisetiformis</i>	Fountainbush	55	150 Pot	2 x 1m	
WSM	<i>Westringia zena</i>	Coast Rosemary	55	150 Pot	1 x 1m	y
GROUNDCOVERS AND GRASSES						
CAP	<i>Carex appressa</i>	Sedge	95	150 Pot	0.7 x 0.7m	y
CCI	<i>Casuarina 'Cousin It'</i>	Prostrate Casuarina	95	150 Pot	0.2 x 1m	y
DCA	<i>Dianella caerulea</i>	Blue Flax-Lily	95	150 Pot	0.5 x 1m	y
GGG	<i>Grevillea obtusifolia</i>	Grevillea	95	150 Pot	0.2 x 1m	y
LLT	<i>Lomandra 'Lime Tuff'</i>	Dwarf Matt Rush	95	150 Pot	0.7 x 0.7m	y
MPA	<i>Myoporum parvifolium</i>	Creeping Myoporum	95	150 Pot	0.3 x 1m	y
RAF	<i>Rhagodia 'Aussie Flat Bush'</i>	Salt Bush	95	150 Pot	0.4 x 1m	y
SSE	<i>Scenicio serpens</i>	Chalk Sticks	95	150 Pot	0.2 x 1m	
TAU	<i>Themeda australis</i>	Kangaroo Grass	95	150 Pot	0.7 x 0.7m	y
BUSH FOOD PLANT SCHEDULE						
TREES						
BCI	<i>Backhousia citriodora</i>	Lemon Myrtle	1	75L	8 x 4m	y
MPJ	<i>Macadamia integrifolia x tetraphylla</i>	Macadamia	1	75L	6 x 3m	y
PEL	<i>Podocarpus elatus</i>	Illawarra Plum Pine	2	75L	8 x 4m	y
SHRUBS						
BER	<i>Banksia ericifolia</i>	Heath Banksia	70	200 Pot	3 x 3m	y
CVI	<i>Callistemon viminalis</i>	Weeping Bottlebrush	70	200 Pot	4 x 3m	y
ATE	<i>Pultenaea villosa</i>	Hairy Bush Pea	70	200 Pot	1 x 1m	y
GRASSES/GROUNDCOVERS						
BSC	<i>Billardiera scandens</i>	Apple Berry	30	150 Pot	0.5 x 0.5m	y
DCA	<i>Dianella caerulea</i>	Blue Flax-Lily	30	150 Pot	0.5 x 1m	y
LLO	<i>Lomandra longifolia</i>	Spiny-Head Mat-Rush	30	150 Pot	1 X 0.6m	y
RSP	<i>Rhagodia spinescens</i>	Salt Bush	30	150 Pot	0.5 x 1m	y
RRO	<i>Rubus probus</i>	Atherton Raspberry	30	150 Pot	0.5 x 1m	y
SGLA	<i>Smilax glyciphylla</i>	Sarsparella	30	150 Pot	0.5 x 0.5m	y
TTE	<i>Tetragonia tetragonoides</i>	Native Spinach	30	150 Pot	0.2 x 1m	y



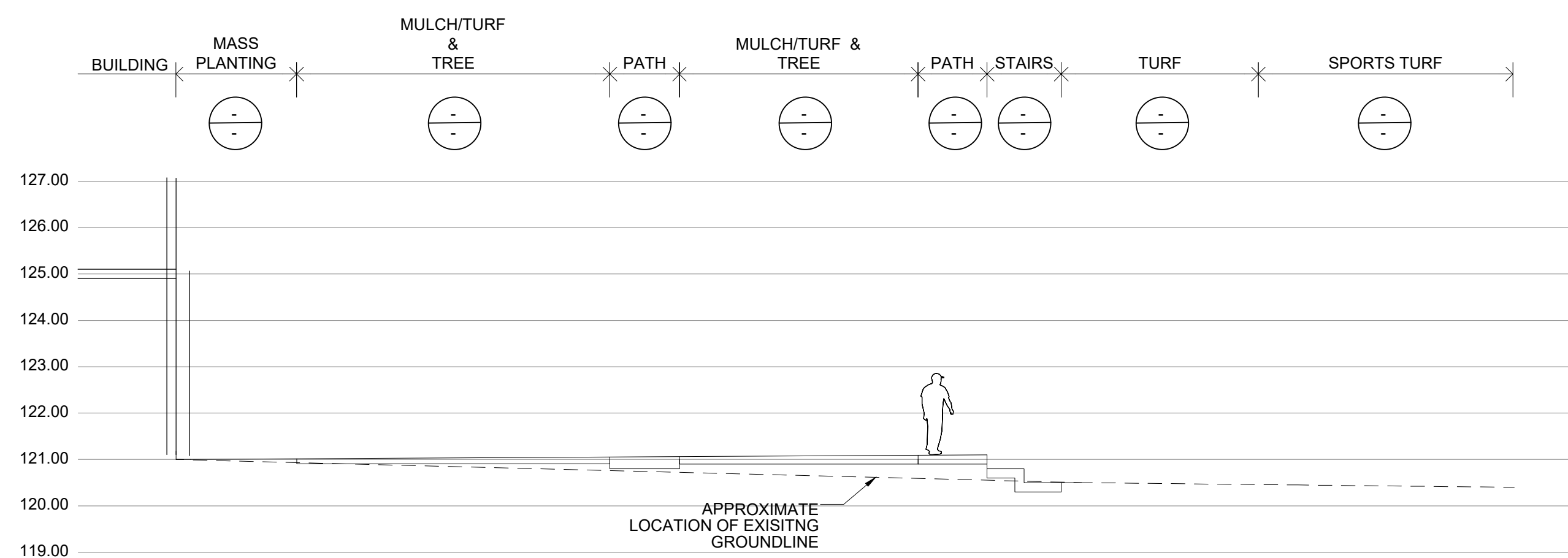
AMENDMENTS				DESCRIPTION
REV	BY	DATE		
A	YP	07.07.2021		ISSUED FOR RTS



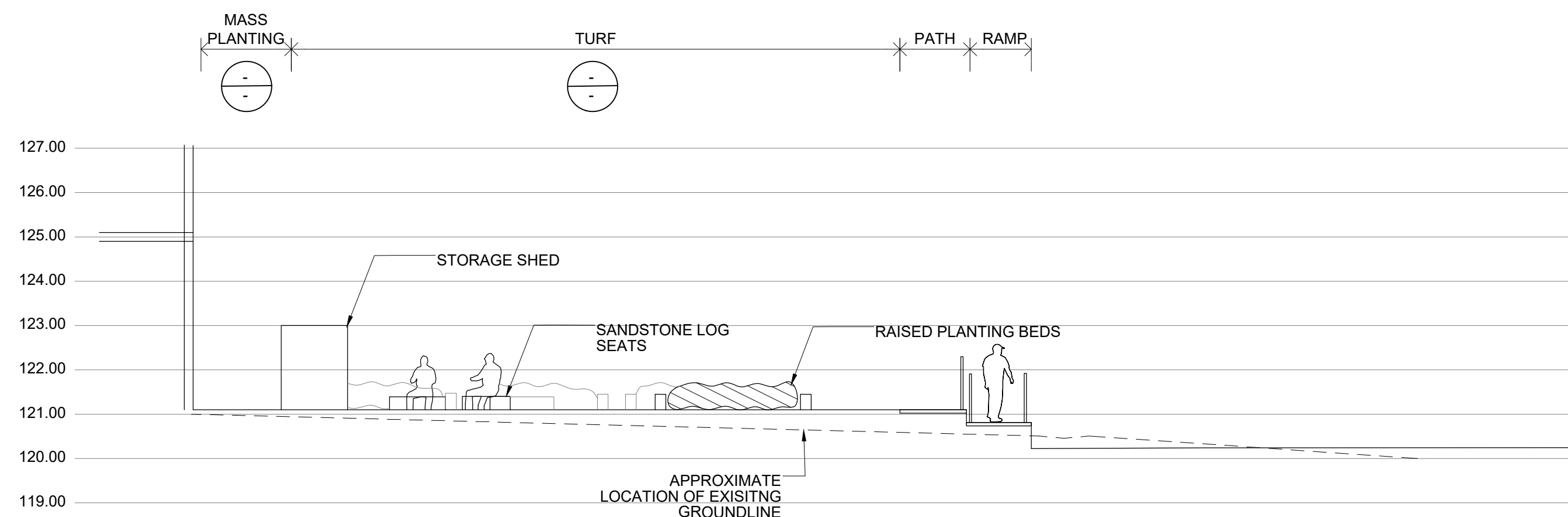
SECTION AA
1:100



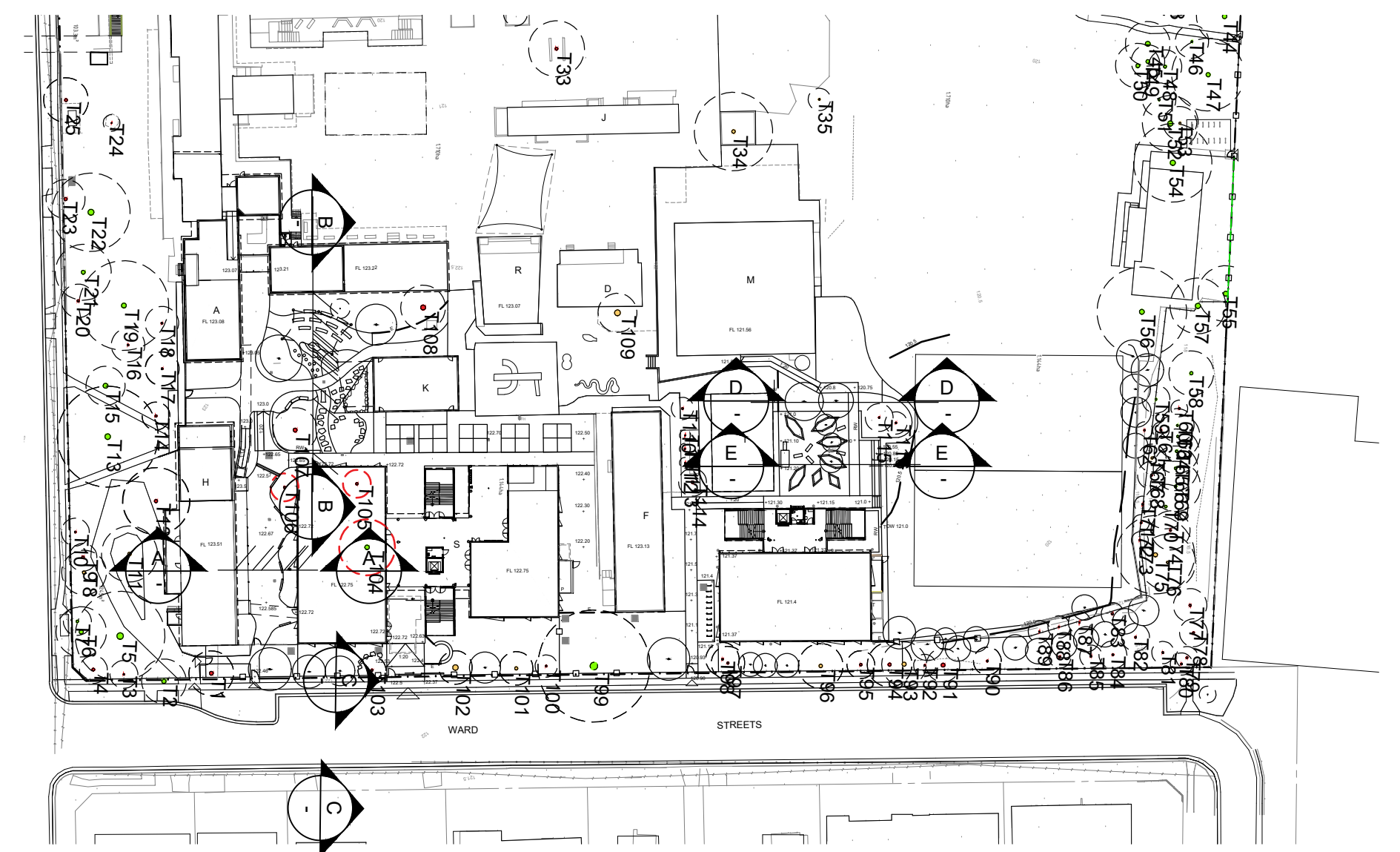
SECTION BB
1:100



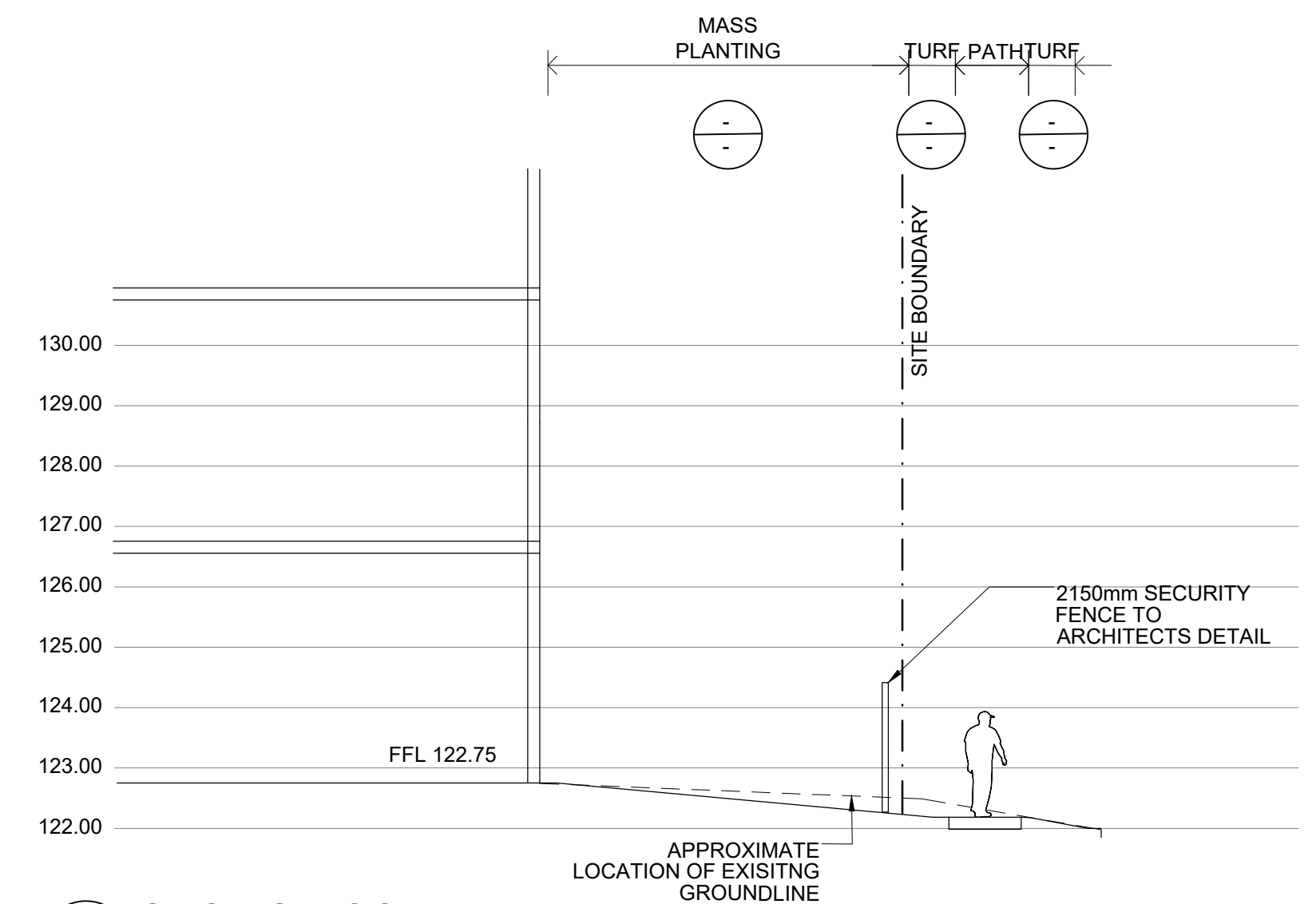
SECTION DD
1:100



SECTION EE
1:100

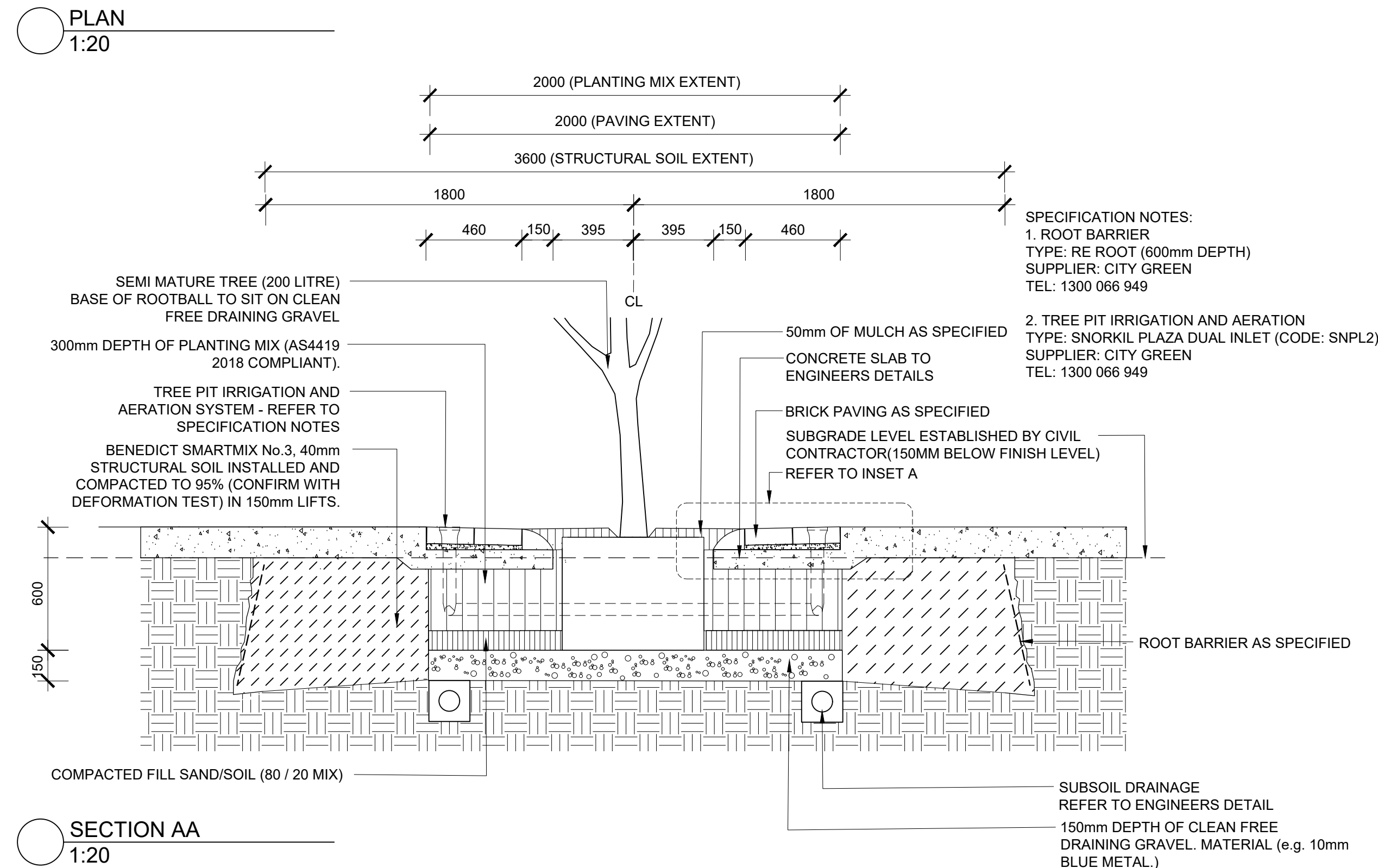
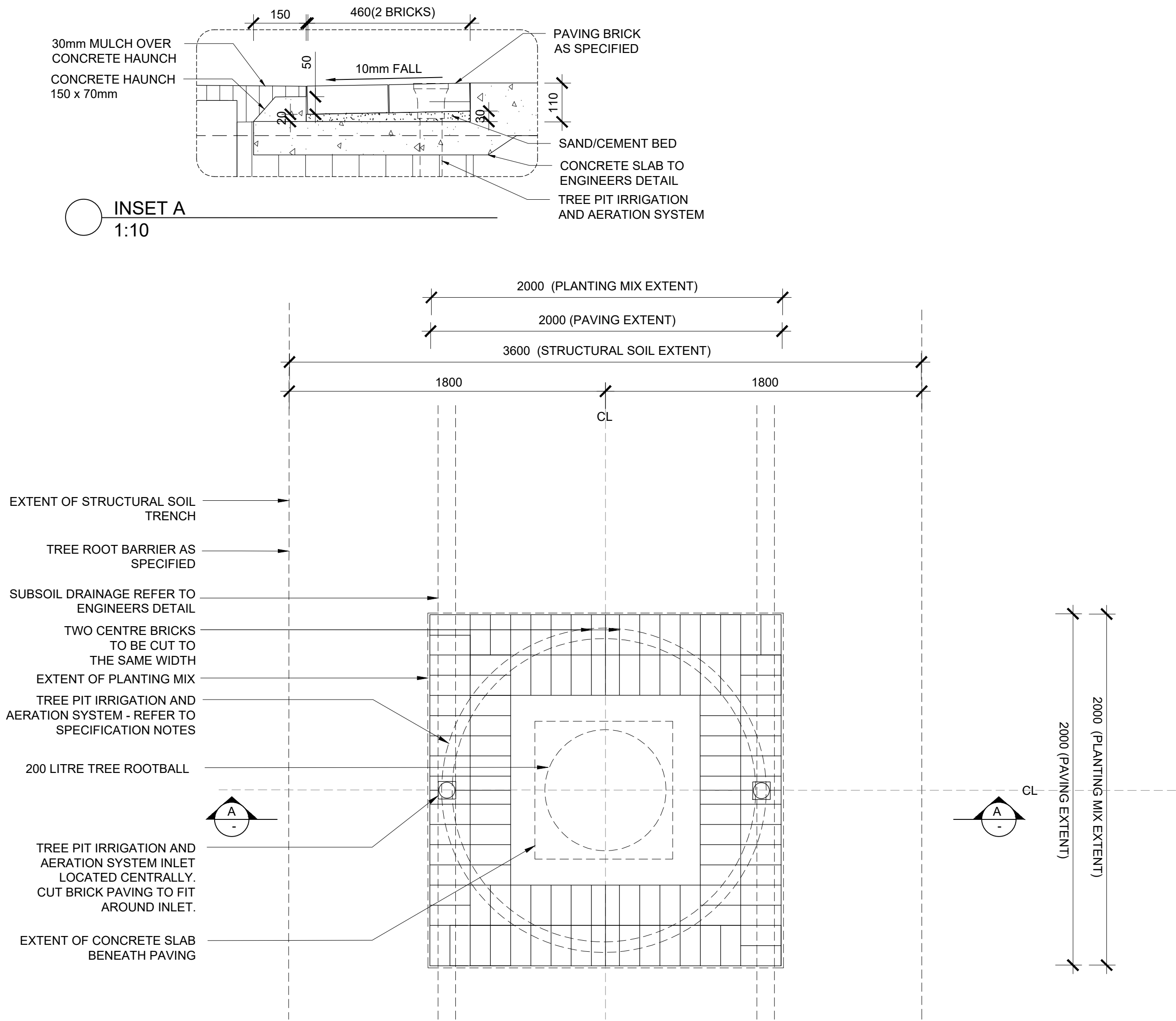


KEY PLAN

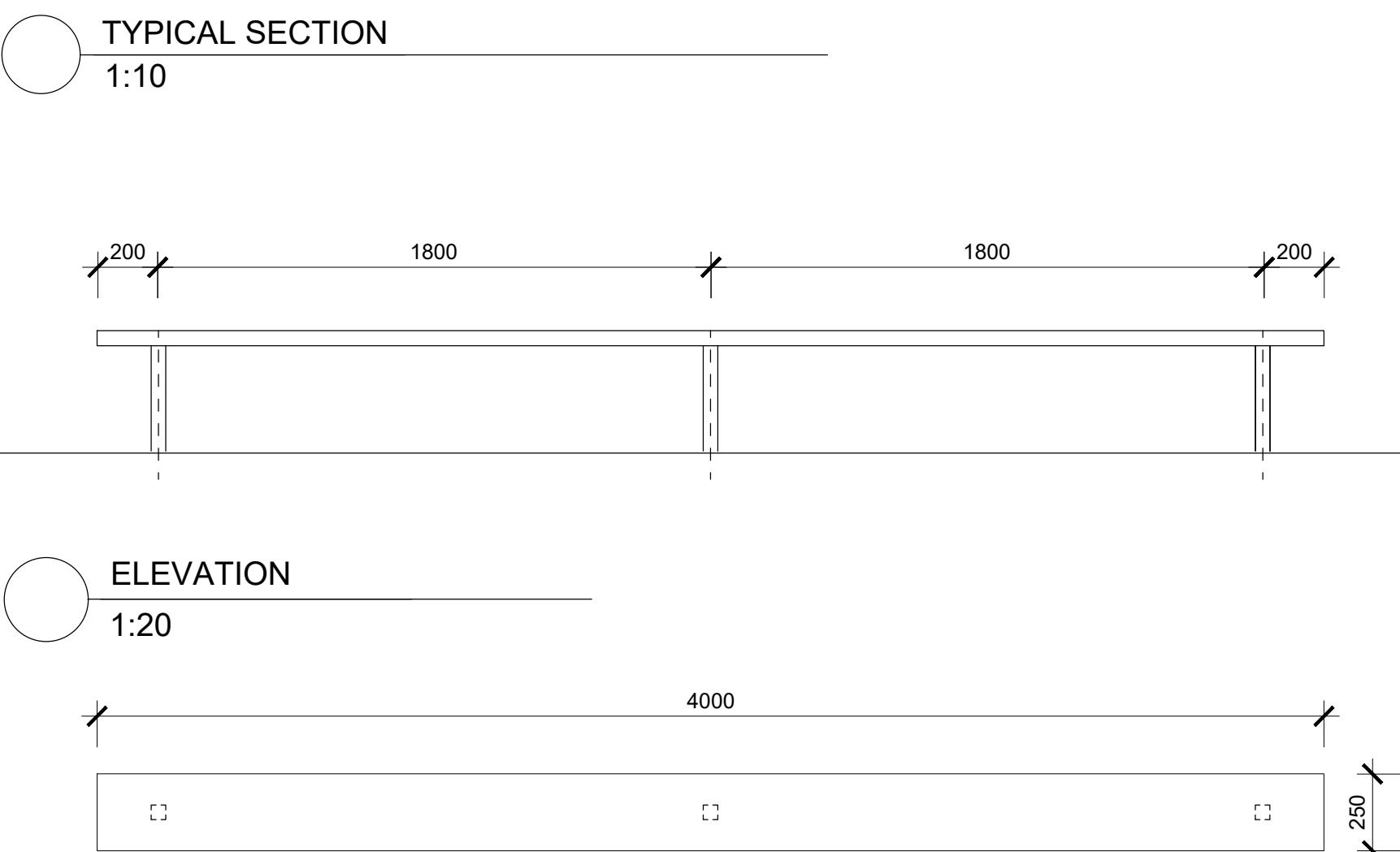
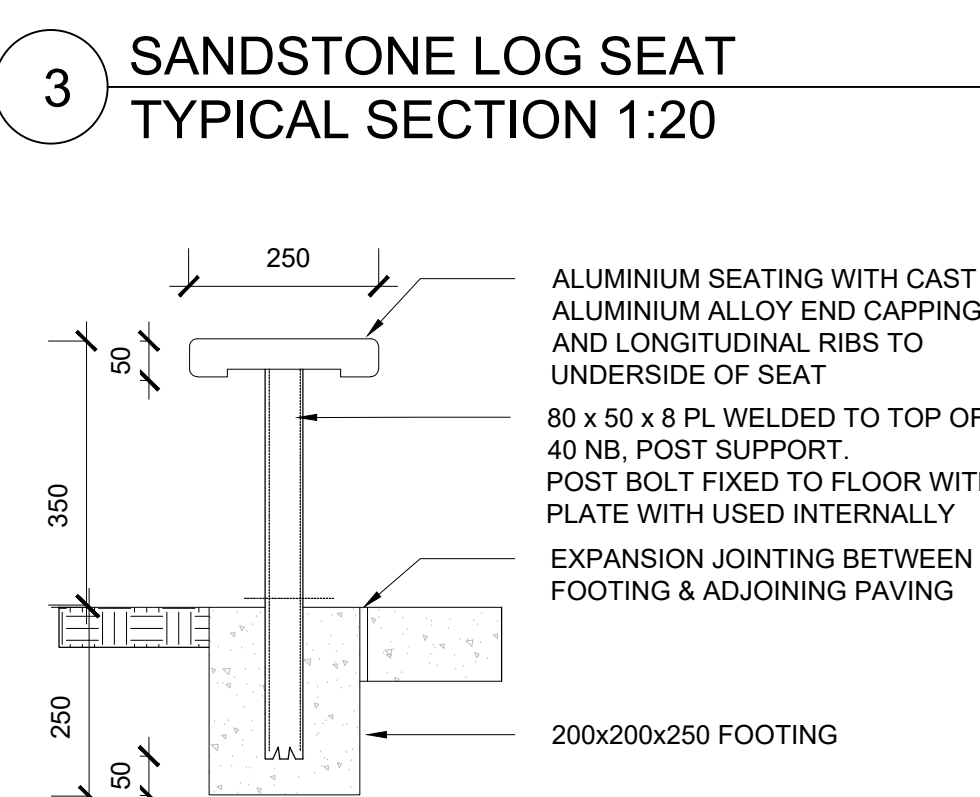
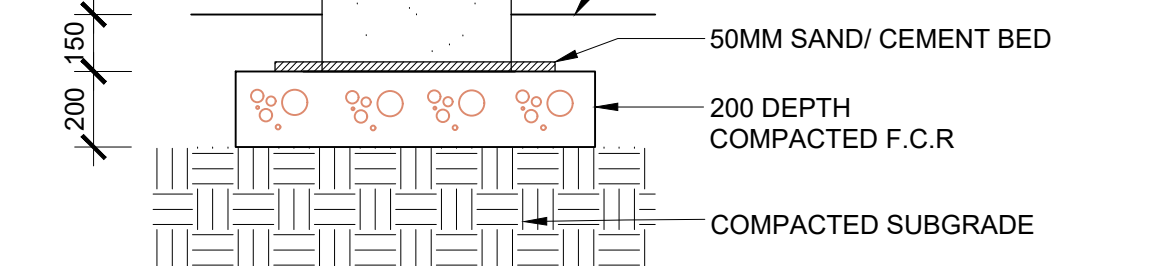
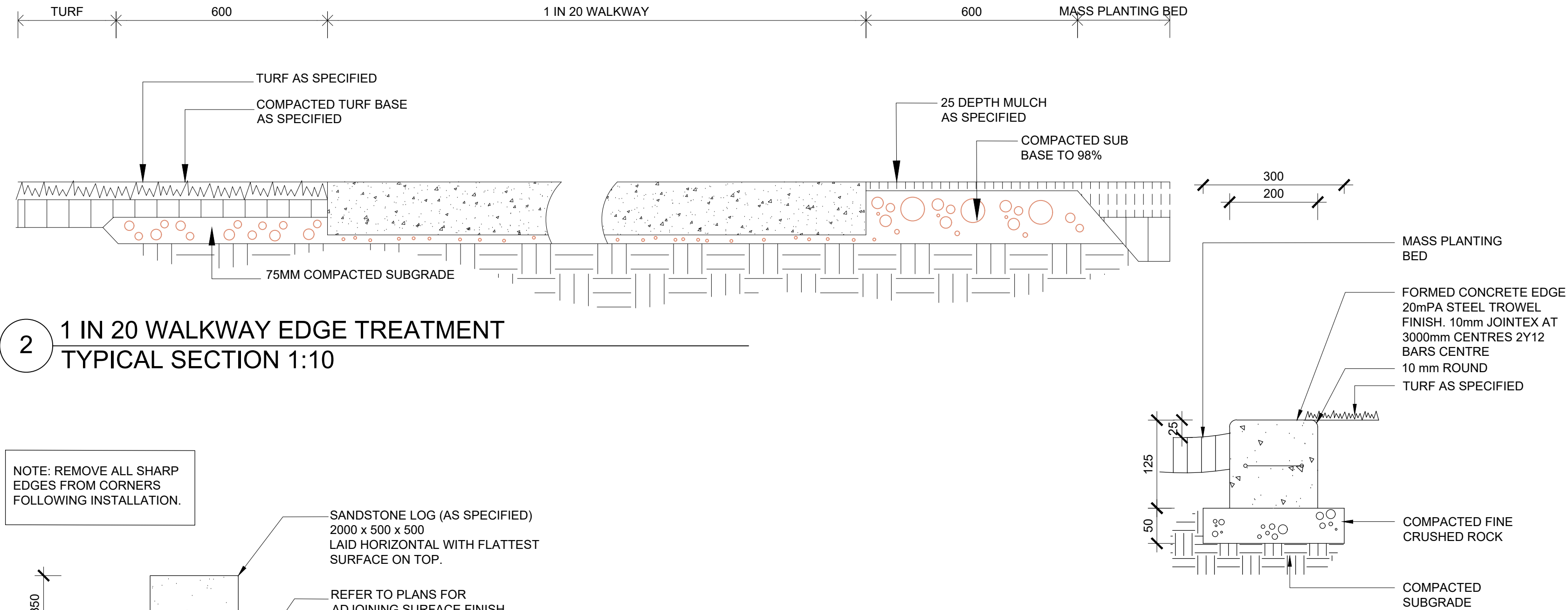


SECTION CC
1:100

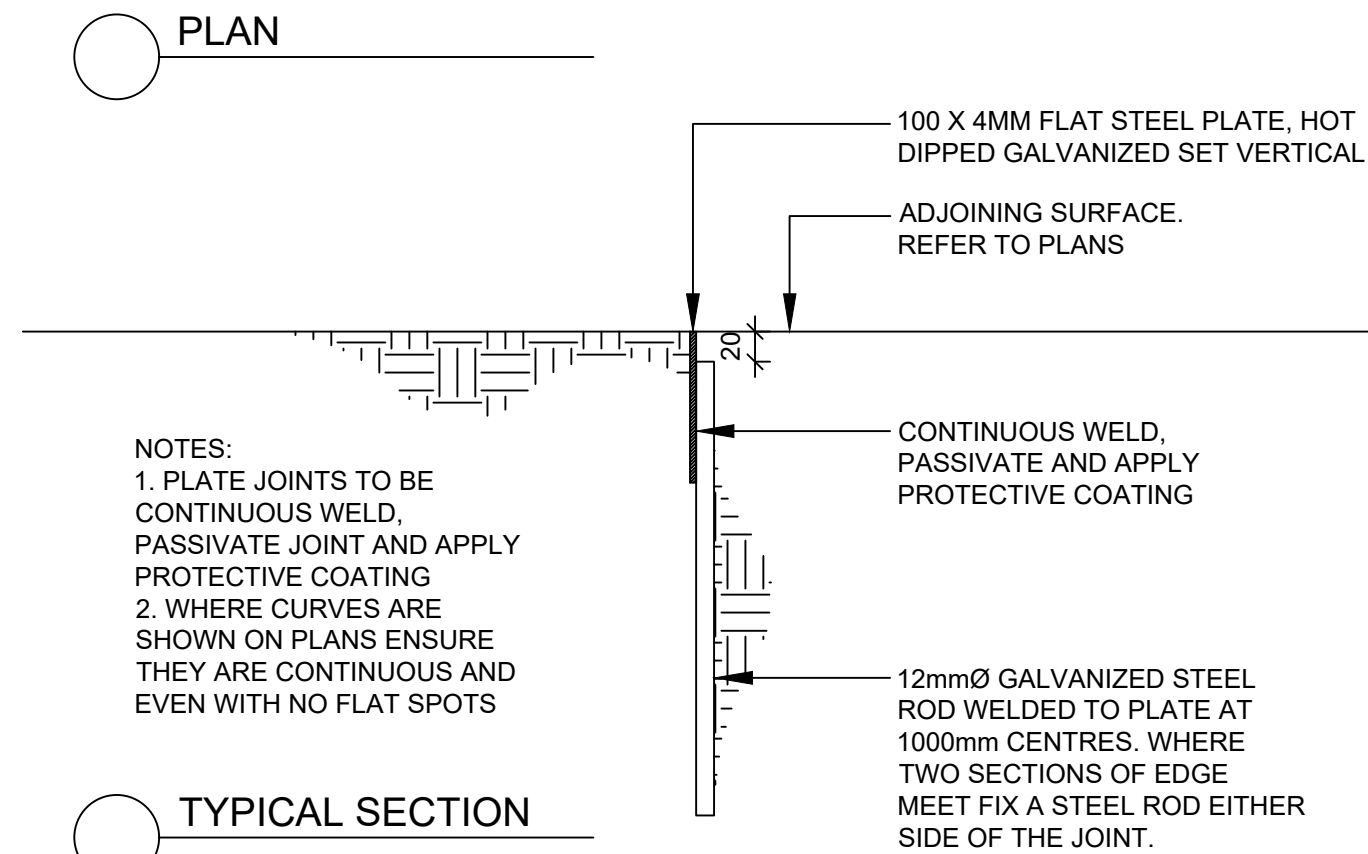
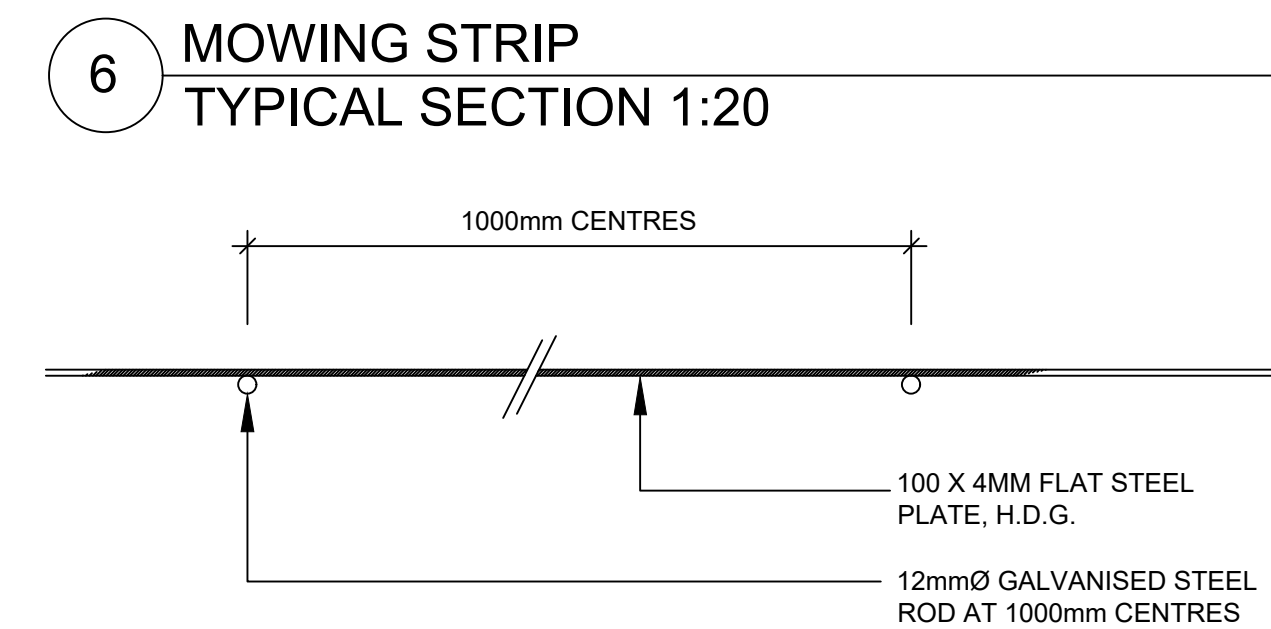
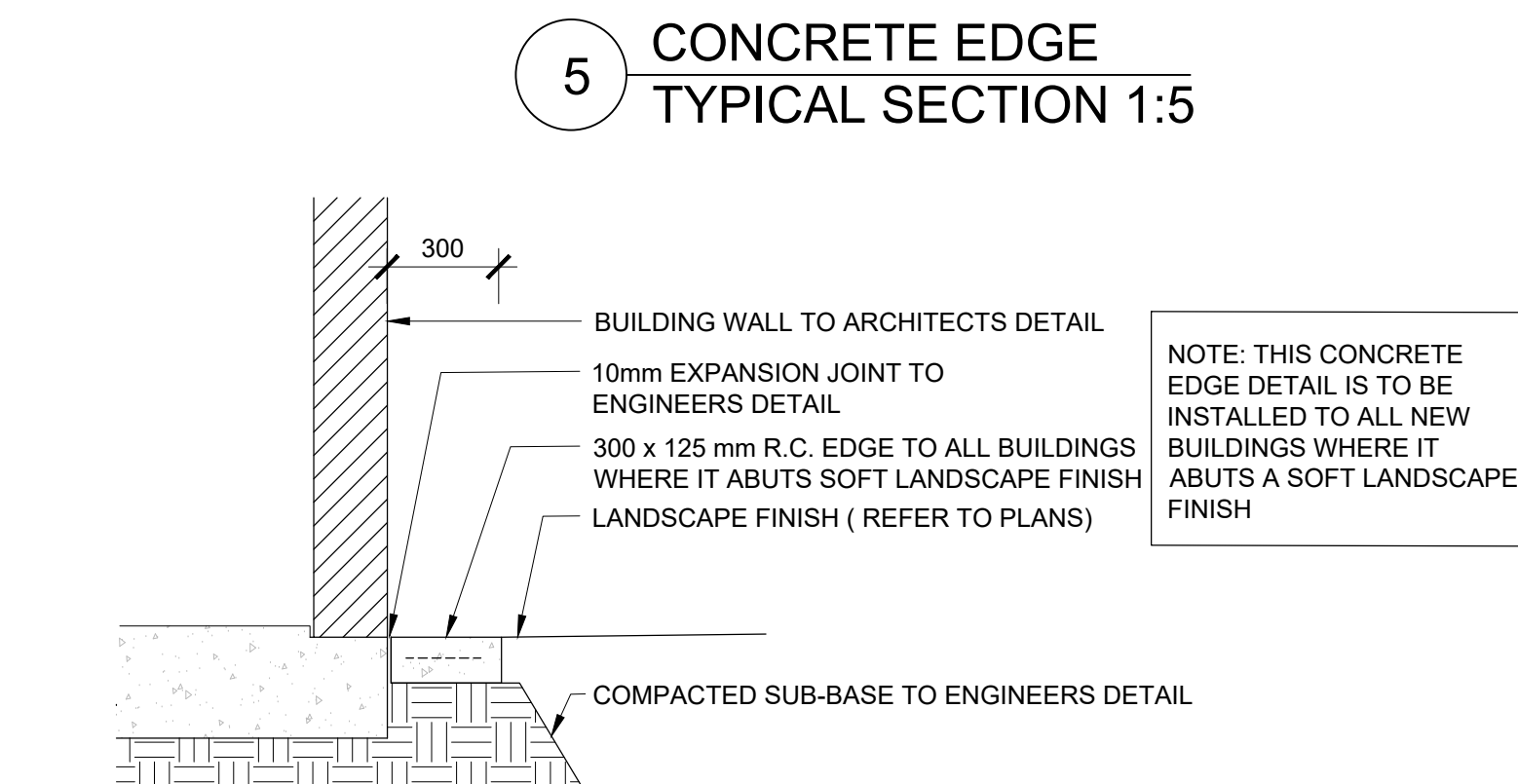
AMENDMENTS			
REV	BY	DATE	DESCRIPTION
A	YP	07.07.2021	ISSUED FOR RTS



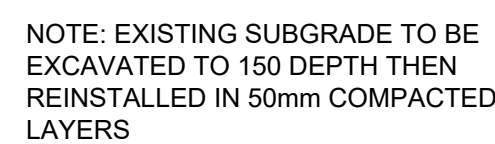
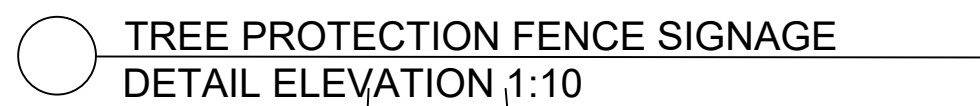
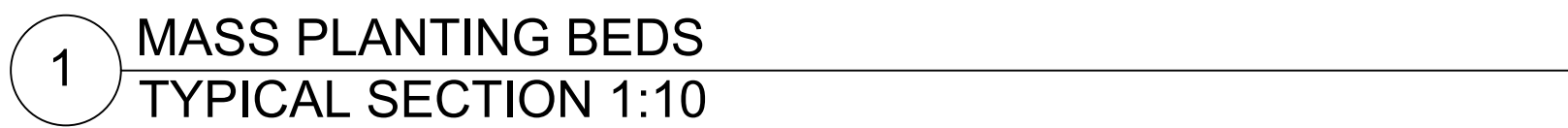
1 SEMI MATURE TREE PLANTING IN PAVING / STRUCTURAL SOIL



4 BENCH SEAT



AMENDMENTS			
REV	BY	DATE	DESCRIPTION
A	YP	07.07.2021	ISSUED FOR RTS



HANSEN YUNCKEN

 **NSW**
GOVERNMENT

Education

DRAWING NAME

LANDSCAPE: CONSTRUCTION DETAILS

PROJECT

EPPING WEST PUBLIC SCHOOL
ALTERATIONS AND ADDITIONS
96 CARLINGFORD RD EPPING NSW

NORTH

SCALE AS SHOWN @ A1

07 JULY 2021

PROJECT	DISCIPLINE	PHASE	SERIES NUMBER	REVISION
EPPW - LA - SSDA - L601				A

SPECIFICATION NOTES				
GENERAL	HARDSCAPE	HARDSCAPE	FURNITURE AND FIXTURES	FURNITURE AND FIXTURES
<p>1.0 SERVICES</p> <p>Before landscape work is commenced. The Landscape Contractor is to establish the position of all servicelines and ensure tree planting is to be carried out at least 3 metres away from these services. Service lids, vents and hydrants shall be left exposed and not covered by any landscape finishes (turfing, paving, garden beds etc.) Finish adjoining surfaces flush with pit lids.</p> <p>Dial Before You Dig - It is the landscape contractor's full responsibility to complete a full services search and take all required measures to ensure protection of these services including potholing to confirm locations. The client in no way will be held responsible for any damage caused to services as a result of the contract works.</p> <p>Excavation Do not excavate by machine within 1m of existing underground services.</p> <p>2.0 GENERAL</p> <ul style="list-style-type: none">Do not scale from drawings.Larger scale drawings and written dimensions take preference.All dimensions in mm unless stated otherwise.All tree dimensions and RLs in metres.Use figured dimensions only.Verify all dimensions on site before the commencement of any works.Contractors shall locate and protect all services prior to construction.All work shall be carried out in accordance with current versions of Australian Standards, BCA and Local Government Regulations.Structural Details shall be subject to Engineer's Specifications.Drainage & Water Feature Details shall be subject to Hydraulic Engineer's Specifications.All work shall be carried out in a professional manner by Qualified Tradesperson according to the Landscape Drawings & Technical Specification and Engineer's Specifications.Protect all adjoining property building, walls and paving. Damaged elements are to be replaced at no cost to the client. <p>3.0 FINISHES</p> <ul style="list-style-type: none">There are to be no sharp protrusions or abrasive edges, obtrusive fittings and fixtures.Adjust extent of each type of soilworks and edging locally as required to accommodate final constructed locations of walls and pavements.All garden bed levels must be a minimum of 150mm below facade flashing and waterproof membrane to slab. Refer typical details.All paving and deck levels must be setout and co-ordinated with civil stormwater pits and trench drains prior to construction. Refer Civil Engineer's documentation.Contractor to provide an access hatch in timber decking for each pit located beneath timber deck.Adjust final location of soilworks and edging locally to suit service infrastructure including services, lines, pillars, valves and the like.Each area of turf extends to the entire area bounded by adjacent walls, pavements, edges and kerbs as shown.For all lighting locations to landscape areas refer to Electrical Engineers drawings. FinalLocation to be confirmed with Project Landscape Architect.Finish surface levels and contours are indicative only. Refer to Civil Engineers drawings for final levels.For all structural details of walls, pavements, and the like refer to Structural and/or CivilEngineer's documentation and specification.Sub soil drainage indicative only. Refer to Civil or Hydraulic Engineer's documentation for overland flow requirements, extent and details of all sub soil drainage.Existing trees to be retained are to be protected to Council and Project Arborist's requirements. No vehicular traffic, stockpiling or storage of materials within Tree Protection Zones (TPZs). <p>4.0 PLANTING NOTES</p> <ul style="list-style-type: none">Adjust final location of planting locally to suit service infrastructure including service lines, pillars, valves and the like.Adjust final variation of plant material as directed by Project Landscape Architect to suit final extent of each planting area.All trees in landscape grass seeded batter and turf areas are, unless otherwise noted, to be provided with a mulch ring with spade finish edge.Project Landscape Architect to inspect and approve all Plant material prior to delivery to site.Project Landscape Architect to inspect and approve all Plant material setout prior to install.Plant substitutes shall be approved by the Project Landscape Architect prior to ordering.	<p>1.0 CONCRETE PAVING</p> <p>Construction: Refer to engineers detail Finish: Broom finish. 50cm steel trowel either side of construction joints. Colours: Type 1: General Use - Standard Grey Colour Samples: Prepare 1000 x 1000mm sample of concrete pavement and finish for approval prior to construction.</p> <p>2.0 DRY CREEK BED</p> <p>Construction: Refer to detail on the Landscape Plans Edge Rock - 1-2 man sandstone Base Rock - Sandstone Random Dimensions Joints - base rock to have 10-20mm wide recessed mortar joint. Supplier: Australian Native Landscapes or an approved equivalent.</p> <p>3.0 BRICK PAVING</p> <p>Type: TECHPAVE 80 Size: 230 x 115 x 80 Colour: Natural Supplier: Austral Masonry (tel:02 9840 2333) Samples: Provide 5 pieces for approval prior to construction.</p> <p>4.0 SANDSTONE LOG SEAT</p> <p>Type:Sandstone Retaining A grade Wall Blocks. Dimension: 500 x 500 x 2000mm Grader: Wheel Sawn Premium 'A' Grade Blocks Supplier: Kimberley Sandstone or approved equivalent.</p> <p>5.0 TREE PIT IRRIGATION AND AERATION</p> <p>Type: Snorkil plaza dual inlet Code: SNPL2 Diameter D: 1790mm Supplier: Citygreen Australia. (Tel. 1300 066 949)</p>		<p>1.0 BIKE RAIL</p> <p>Type: Bicycle Hitch Rail (BR85B) - Surface mount. Material: 40NB (50.0) x 1.5mm Grade 304 Stainless Steel Size: 859 x 800mm Supplier: Leda (Ledasecurity.com.au) or an approved equivalent.</p>	

AMENDMENTS			
REV	BY	DATE	DESCRIPTION
A	YP	07.07.2021	ISSUED FOR RTS



DRAWING NAME
LANDSCAPE: SPECIFICATIONS

PROJECT
EPPING WEST PUBLIC SCHOOL
ALTERATIONS AND ADDITIONS
96 CARLINGFORD RD EPPING NSW

NORTH

SCALE NTS @ A1			
07 JULY 2021			
PROJECT	DISCIPLINE	PHASE	SERIES NUMBER
EPPW - LA	- SSDA	- L700	A

SOFTSCAPE	SOFTSCAPE	MAINTENANCE PROGRAM		
<p>1.0 SOILS</p> <p>MASS PLANTING AND TREE PLANTING IN GROUND</p> <p>Type A - Landscape Native Mix (Imported)</p> <p>Supplier: Soilco Pty Ltd Tel: 02 4272 9444</p> <p>Type B-Washed River Sand/ Site Soil (50/50)</p> <p>Supplier: Soilco Pty Ltd Tel: 02 4272 9444</p> <p>VEGETABLE GARDENS</p> <p>Soil Type A-Benedict 'Smartmix' No. 4 Lightweight Planter Box Mix</p> <p>Supplier: Benedict Industries Tel: 02 9986 3500</p> <p>Soil Type B-Benedict 'Smartmix' No. 5 Lightweight Planter Box Sub Soil</p> <p>Supplier: Benedict Industries Tel: 02 9986 3500</p> <p>TURF</p> <p>Type: "Turf underlay"</p> <p>Supplier: Benedict Industries Tel: 02 9986 3500</p> <p>2.0 MULCH</p> <p>APPLICATION: Place mulch to the required depth, (refer to drawings clear of plant stems, and rake to an even surface finishing flush with adjoining levels. Ensure mulch is watered in and tamped down during installation.</p> <p>3.0 PLANTS</p> <p>SUPPLY</p> <p>The Landscape Contractor is responsible for organising the delivery of plant stock to site and checking plant stock prior to accepting delivery on site to ensure the plants supply possess the following characteristics:</p> <ul style="list-style-type: none">• Large healthy root systems, with no evidence of root curl, restriction or damage.• Vigorous, well established, free from disease and pests, of good form consistent with the species or variety.• Hardened off, not soft or forced, and suitable for planting in the natural climatic conditions prevailing at the site.• Trees must, unless required to be multi-stemmed, have a single leading shoot.• Any plants or trees that are accepted by the landscape contractor that do not meet this specification will be replaced at the contractor's expense. <p>Replacement: Replace damaged or failed plants with plants of the same type and size.</p> <p>PLANTING</p> <p>Do not plant in unsuitable weather conditions such as extremes of heat or cold, wind or rain. Before planting begins, complete cultivation, soil placement, fertilisation etc as previously specified.</p> <p>Before plants are installed all pot sizes shall have their roots pruned with an appropriate, clean, sharp instrument to eliminate any root confusion occurring at edge of pot zone.</p> <p>Before planting begins, thoroughly water the plants and the planting area. Keep the area and plants moist during planting. Water the plants immediately after planting, and thereafter as required to maintain growth rates free of stress.</p> <p>The contractor shall give notice, of not less than 24 hours, for inspections as nominated in inspect and hold point schedule</p> <p>ROOT PRUNING OF TREES</p> <p>Remove tree from container and root prune 20mm on sides and bottom to ensure all circling roots have been either severed or aligned radially into the surrounding soil. Plant as per detail.</p> <p>4.0 FERTILISER</p> <p>MASS PLANTING AREAS</p> <p>Type: Nutricote Standard Black 270 Day (16: 4.4: 8.3) or approved equal.</p> <p>Installation: Evenly distribute 5g per litre (rootball size) of fertiliser onto backfill area around rootball prior to placing mulch.</p> <p>TREE PLANTING</p> <p>Type: Nutricote Standard Brown 360 Day blend (16: 4.4: 8.3) or approved equal.</p> <p>Installation: Distribute 5g per litre (rootball size)of fertiliser into backfill around rootball. Apply in 3 evenly spread layers as hole is filled. First layer is to be half way up the rootball, second layer 3/4 up the rootball and third layer 50-100mm from the soil finished surface level. This application ensures that the nutrients leeches evenly downwards into the soil profile and encourages outward root system growth.</p>	<p>5.0 STAKING AND TYING</p> <p>Stakes shall be straight plantation grown hardwood, free from knots and twists, pointed at one end and sized according to size of plants to be staked.</p> <p>a. 5-15 litre size plant 1x(1200x25x25mm)</p> <p>b. 35-75 litre size plant 2x(1500x38x38mm)</p> <p>c. 100 - 200 litre 3x(1800x50x50mm)</p> <p>Ties shall be 50mm wide hessian webbing or approved equivalent nailed or stapled to stake. Drive stakes a minimum one third of their length, avoiding damage to the root system, on the windward side of the plant.</p> <p>6.0 ROOT CONTROL BARRIER</p> <p>TYPE: Root Stop Root Barrier</p> <p>PRODUCT CODE: RS600</p> <p>LOCATION: Street tree plantings</p> <p>SIZE: 600mm deep roll</p> <p>SUPPLIER: Arbor Green (Tel: 1300 760 642)</p> <p>INSTALLATION: The top of root control barrier to be located 150mm closer to the tree trunk than the base of the root control barrier. The angling of the root control barrier encourages root growth in a downward direction.</p> <p>7.0 GEOTEXTILE</p> <p>Type: Polymeric fabric formed from a plastic yarn composed of at least 85% by weight of propylene, ethylene, amide or vinylidenechloride and containing stabilisers or inhibitors to make the filaments resistant to deterioration due to ultraviolet light. Identification and marking: To AS 3705.</p> <p>Product: Bidim A34</p> <p>Recommended Supplier: Geofabrics Australia</p> <p>8.0 TURF</p> <ul style="list-style-type: none">• PREPARATION <p>Spread 100mm of Turf Underlay as specified and finish flush with adjacent finished surface levels.</p> <p>Provide a one (1)kg sample of imported topsoil mixes, if required, for approval. No imported topsoil shall be delivered to site prior to approval of the sample provided.</p> <ul style="list-style-type: none">• TOPDRESSING <p>Topdress material shall be as specified in AS 4419 - 1999. Topdress material shall be clean washed river sand, free from any clay lumps, clods, weeds, tree roots, sticks, organic matter, rubbish and material toxic to plant growth and the like, and shall have a neutral pH and minimal salt content (measured oven dry of 0.1%).</p> <p>Turf shall be of even thickness free from weeds and other foreign matter, lay in stretcher pattern with joints staggered and close butted. Deliver turf on site within 24 hours of being cut, and lay within 36 hours or being cut. Prevent it from drying out between cutting and laying.</p> <p>Evenly spread and mix 50g of fertiliser per m2 into topsoil prior to placing turf.</p> <ul style="list-style-type: none">• INSTALLATION & ESTABLISHMENT <p>Watering: Water as necessary to keep soil moist to a depth of 100mm.</p> <p>Protection: Protect newly turfed areas against traffic until grass is established.</p> <p>Making Good: Lift failed turf and relay with new turf.</p> <p>Fertilising: Two weeks after laying, fertilise turf as specified.</p> <p>Topdressing : When the turf is established, lightly topdress to a depth of 10mm with topdress material as specified. Rub the dressing well into the joints and correct any unevenness of surface</p> <p>Mowing: When the turf is established, mow at regular intervals to maintain an average height of 50mm.</p> <p>- TURF TYPE: Kikuyu</p> <p>Recommended Supplier: A registered Turf grower to be approved by the Landscape Architect or an approved equivalent.</p>	<p>Maintenance shall mean the care and maintenance of the landscape works by accepted horticultural practice as rectifying any defects that become apparent in the landscape works under normal use. This shall include, but shall not be limited to, watering, mowing, fertilising, reseeding, returfing, weeding, pest and disease control, staking and tying, replanting and plant replacement, cultivation, pruning, aerating, renovating, topdressing, maintaining the site in a neat and tidy condition as follows:</p> <p>1.0 GENERAL</p> <p>The Landscape Contractor shall maintain the landscape works for the term of the maintenance (or plant establishment) period to the satisfaction of the Landscape Architect and Client. The Landscape Contractor shall attend to the site on a weekly basis. The maintenance period shall commence at practical completion and continue for a period of fifty two (52) weeks.</p> <p>2.0 WATERING</p> <p>Grass and trees shall be watered regularly so as to ensure continuous healthy growth. Street trees and larger plant stock are to be watered through the top of the rootball to ensure a thorough soaking of the plant rootball. Watering of street trees shall be carried out on a weekly basis throughout the maintenance period <u>regardless of rainfall.</u></p> <p>3.0 RUBBISH REMOVAL</p> <p>During the term of the maintenance period the Landscape Contractor shall remove rubbish that may occur and reoccur throughout the maintenance period. This work shall be carried out regularly so that at weekly intervals the area may be observed in a completely clean and tidy condition.</p> <p>4.0 REPLACEMENTS</p> <p>The Landscape Contractor shall replace all plants that are missing, unhealthy or dead at the Landscape Contractor's cost. Replacements shall be of the same size, quality and species as the plant that has failed unless otherwise directed by the Landscape Architect. Replacements shall be made on a continuing basis not exceeding two (2) weeks after the plant has died or is seen to be missing. The landscape contractor is to report any evidence of theft or vandalism to the Landscape Architect within one day of them occurring.</p> <p>5.0 STAKES AND TIES</p> <p>The Landscape Contractor shall replace or adjust plant stakes and tree guards as necessary or as directed by the Landscape Architect. Remove stakes and ties at the end of the maintenance period if so directed.</p> <p>6.0 PRUNING</p> <p>Trees and shrubs shall be pruned as directed by the Landscape Architect. Pruning will be directed at the maintenance of the dense foliage or miscellaneous pruning beneficial to the condition of the plants. Any damaged growth shall be pruned. All pruned material shall be removed from the site.</p> <p>7.0 MULCHED SURFACES</p> <p>All mulched surfaces shall be maintained in a clean and tidy condition and be reinstated if necessary to ensure that a depth of 75mm is maintained. Ensure mulch is kept clear of plant stems at all times.</p> <p>8.0 PEST AND DISEASE CONTROL</p> <p>The Landscape Contractor shall spray against insect and fungus infestation with all spraying to be carried out in accordance with the manufacturer's directions. Report all instances of pests and diseases (immediately that they are detected) to the Landscape Architect prior to spraying.</p> <p>9.0 GRASS AND TURF AREAS</p> <p>The Landscape Contractor shall maintain all grass and turf areas by watering, weeding, reseeding, rolling, mowing, trimming or other operations as necessary.</p> <p>Apply lawn fertiliser as specified in fertilisers at the completion of the first and the last mowing, and at times as necessary to maintain healthy grass cover. Carry out last mowing and fertilisation not less than seven (7) days before the end of the maintenance period. Remove grass clippings from site. Grass and turf areas shall be sprayed with approved selective herbicide against broad leafed weeds as required by the Landscape Architect and in accordance with the manufacturer's directions.</p> <p>No fertiliser is to be used on turf areas.</p> <p>Grass and turf areas shall be kept mown to maintain a healthy and vigorous sward within the 30-75mm range, average 50mm.</p> <p>10.0 WEED ERADICATION</p> <p>Eradicate weeds by environmentally acceptable methods using a non-residual glyphosate herbicide (eg: 'Roundup') in any of its registered formulae, at the recommended maximum rate. Regularly remove by hand, weed growth that may occur or recur throughout grassed, planted and mulched areas. Remove weed growth from an area 1000mm diameter around the base of trees in grassed areas. Continue eradication throughout the course of the works and during the maintenance period.</p> <p>11.0 SOIL SUBSIDENCE</p> <p>Any soil subsidence or erosion which may occur after the soil filling and preparation operations shall be made good by the Landscape Contractor at no cost to the client.</p> <p>12.0 COMPLETION</p> <p>Notwithstanding anything to the contrary in the Contract, The Landscape Architect may instruct the Landscape Contractor to perform urgent maintenance works. Should the Landscape Contractor fail to carry out these works within seven (7) days of such a notice, the Principal reserves the right to employ others to carry out such works and charges costs of these works to the Landscape Contractor.</p>		

AMENDMENTS			
REV	BY	DATE	DESCRIPTION
A	YP	07.07.2021	ISSUED FOR RTS



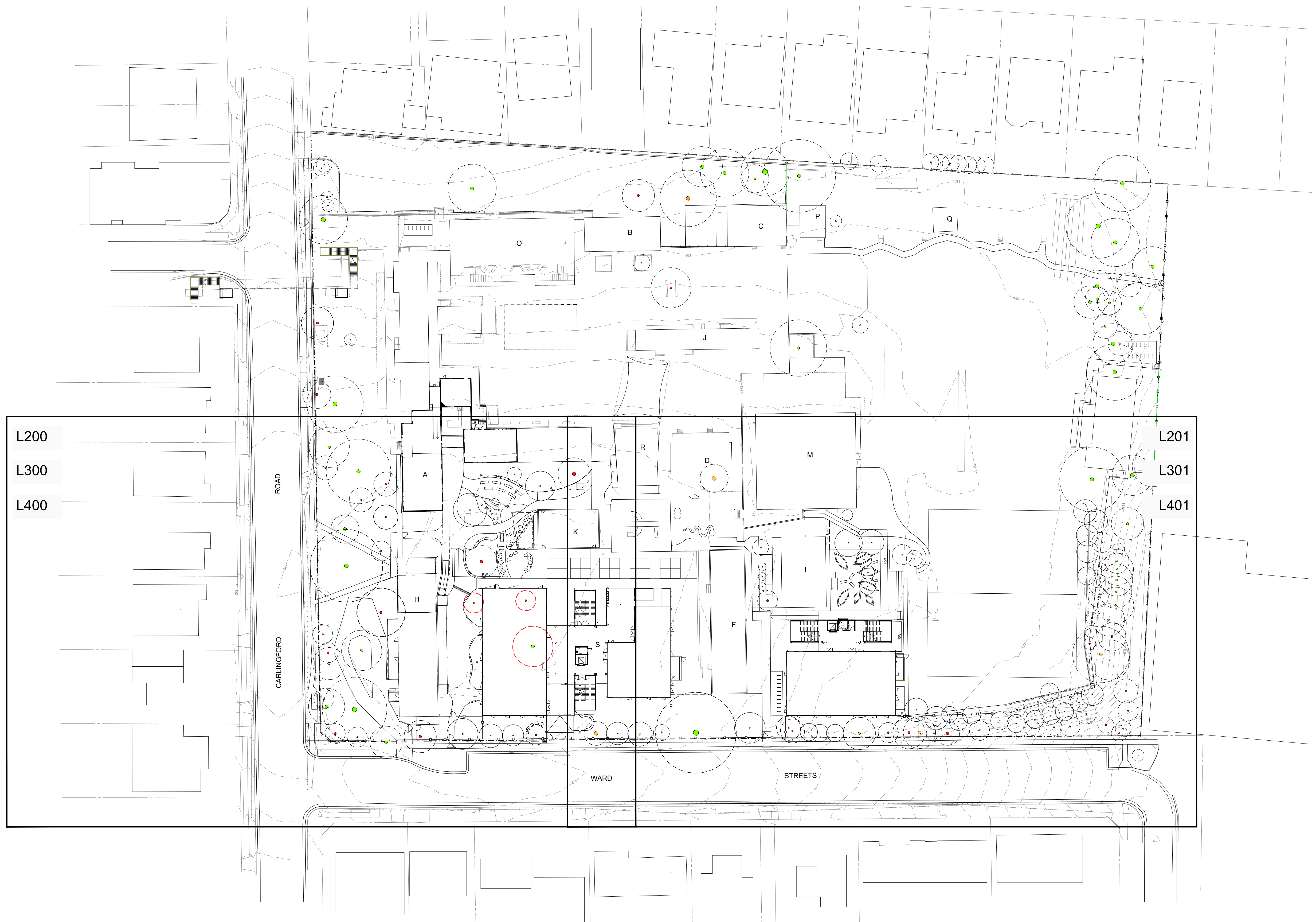
DRAWING NAME

LANDSCAPE: SPECIFICATIONS

PROJECT

EPPING WEST PUBLIC SCHOOL
ALTERATIONS AND ADDITIONS
96 CARLINGFORD RD EPPING NSW

NORTH		SCALE NTS @ A1	
		07 JULY 2021	
PROJECT	DISCIPLINE	PHASE	SERIES NUMBER
EPPW - LA	- SSDA	- L701	A



AMENDMENTS			
REV	BY	DATE	DESCRIPTION
A	YP	06.07.2021	ISSUED FOR RTS



TaylorBrammer
TAYLOR BRAMMER LANDSCAPE ARCHITECTS PTY LTD
AUSTINER STUDIO
28 Moore St PO Box 5064 Australia, NSW, 2011 E: info@taylorbrammer.com.au T: 61 2 9387 8855
Copyright © Taylor Brammer Landscape Architects Pty Ltd. ABN 61 080 724 888

DRAWING NAME
LANDSCAPE: OVERALL SITE PLAN

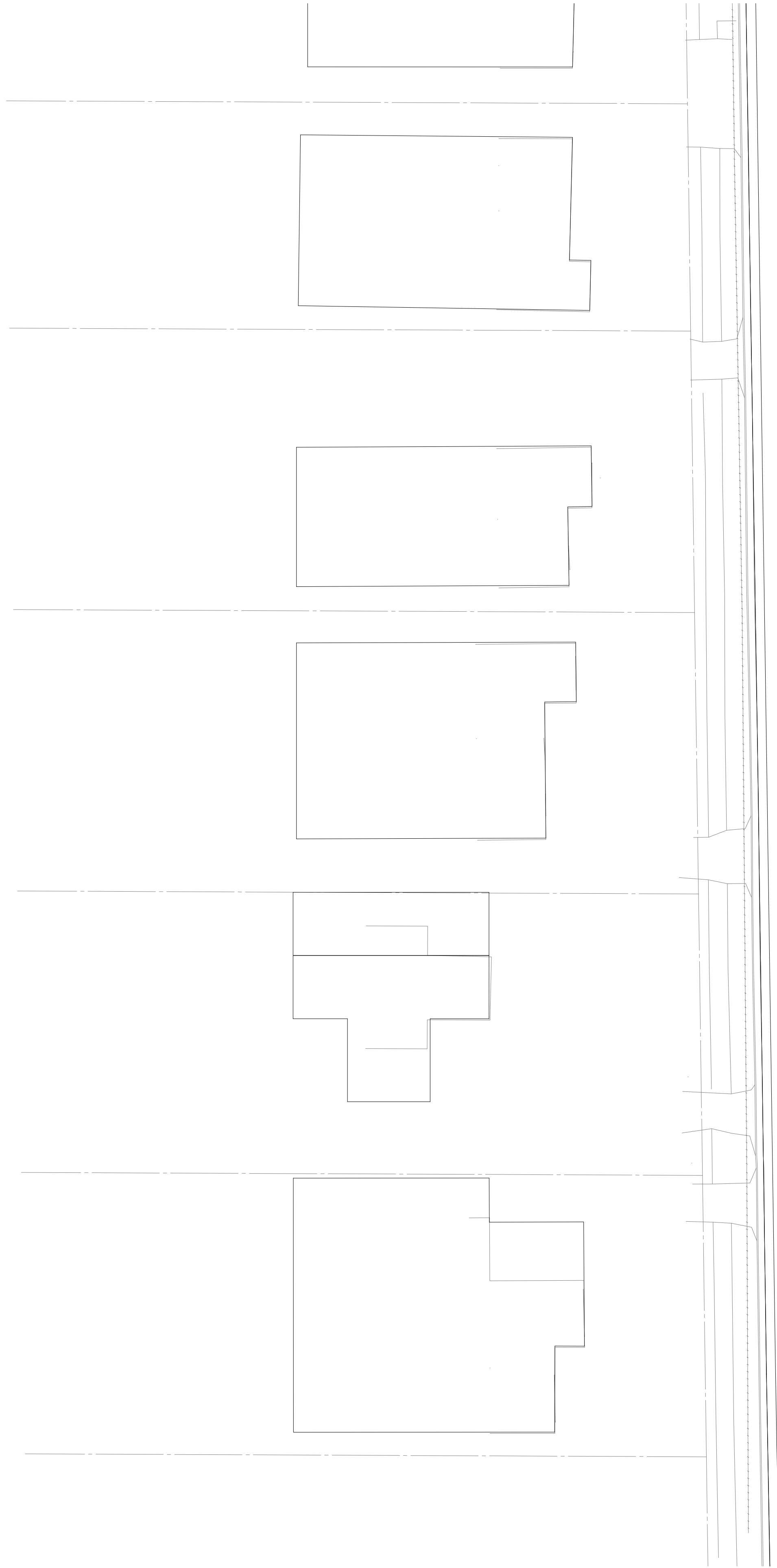
PROJECT
**EPPING WEST PUBLIC SCHOOL
ALTERATIONS AND ADDITIONS
96 CARLINGFORD RD EPPING NSW**

NORTH

5000 10000 15000 20000 25000 50000
SCALE 1 : 500 @ A1

07 JULY 2021

PROJECT	DISCIPLINE	PHASE	SERIES NUMBER	REVISION
EPPW - LA - SSSA - L100	A			



CARLINGFORD ROAD

WARD



AMENDMENTS			
REV	BY	DATE	DESCRIPTION
A	YP	07.07.2021	ISSUED FOR RTS



DRAWING NAME
LANDSCAPE: FINISHES PLAN

PROJECT
EPPING WEST PUBLIC SCHOOL
ALTERATIONS AND ADDITIONS
96 CARLINGFORD RD EPPING NSW

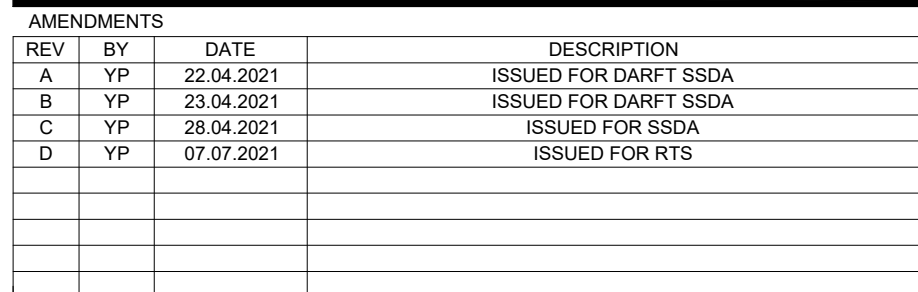
NORTH

2000 4000 6000 8000 10000 20000

SCALE 1 : 200 @ A1

07 JULY 2021

PROJECT	DISCIPLINE	PHASE	SERIES NUMBER	REVISION
EPPW - LA - SSDA - L200				A



LANDSCAPE: GRADING PLAN

EPPING WEST PUBLIC SCHOOL
ALTERATIONS AND ADDITIONS
96 CARLINGFORD RD EPPING NSW

