



Artist Impression of the upgrades at Epping West Public School

Epping West Public School

Project update

June 2022

Investing in our schools

The NSW Government is investing \$8.6 billion in school infrastructure over the next four years, continuing its program to deliver 160 new and upgraded schools to support communities across NSW. This builds on the more than \$9.1 billion invested in projects delivered since 2017, a program of \$17.7 billion in public education infrastructure.

The NSW Department of Education is committed to delivering new and upgraded schools for communities across NSW. The delivery of these important projects is essential to the future learning needs of our students and supports growth in the local economy.

Project overview

A project is underway at Epping West Public School to provide upgraded facilities for the school community. The project will deliver construction of new buildings including 29 new flexible classrooms and staff administration facilities, refurbishment and renovation work to existing buildings and removal of temporary classroom facilities.

Progress summary

The installation of the new building Block S is nearing completion. The new building will include new flexible learning spaces, student amenities and a new staff administration facility.

Students and staff will start using the facilities from Day 1, Term 3.

For more information contact:

School Infrastructure NSW
Email: schoolinfrastructure@det.nsw.edu.au
Phone: 1300 482 651
www.schoolinfrastructure.nsw.gov.au



Getting ready for Term 3, 2022

Where do I go on my first day of Term 3?

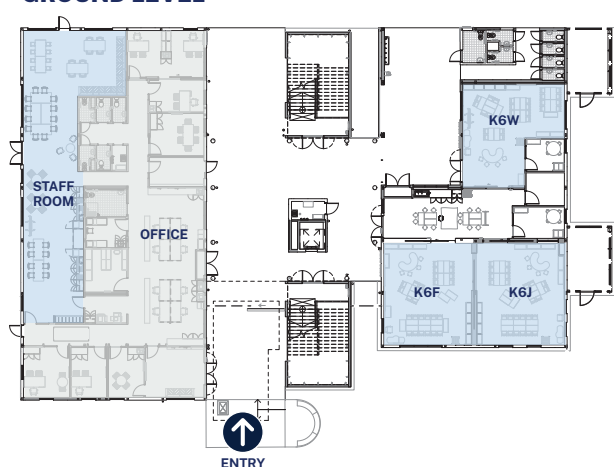
On the first day of Term 3 (Tuesday 19 July), students moving into the new Block S building will meet in the assembly area near the school canteen. All other students are asked to go to their existing classroom spaces.

Teachers and staff from School Infrastructure NSW will be at the school entry and within the school grounds to help direct you to your correct location.

Which classes are moving into the new building?

Certain year groups will be relocated into the new Block S from Day 1, Term 3. Please refer to the map below to find out which classes are moving into the new building.

GROUND LEVEL



LEVEL 1



LEVEL 2



School entry changes

From Term 3 2022, the new main pedestrian entry to the school will be Gate 1 on Ward Street.

New gate signage will also be placed around the school. The new gates for school use will be:

- Gate 1 – The new main school entrance off Ward Street.
- Gate 2 – Entry off Carlingford Road, near the pedestrian overbridge.
- Gate 3 – Entry on Dent Street near West Epping Park.

The former gate entry on Carlingford Road (near Block A and H) will be closed to keep students and staff safe during the refurbishment of these buildings. See the map overleaf for further details.

For more information contact:

School Infrastructure NSW
Email: schoolinfrastructure@det.nsw.edu.au
Phone: 1300 482 651
www.schoolinfrastructure.nsw.gov.au

New pedestrian access around the school

To improve pedestrian access around the school, Parramatta City Council have commenced work to construct a new raised pedestrian crossing (wombat crossing) on Ward Street. These works will be managed separately from the school upgrades.

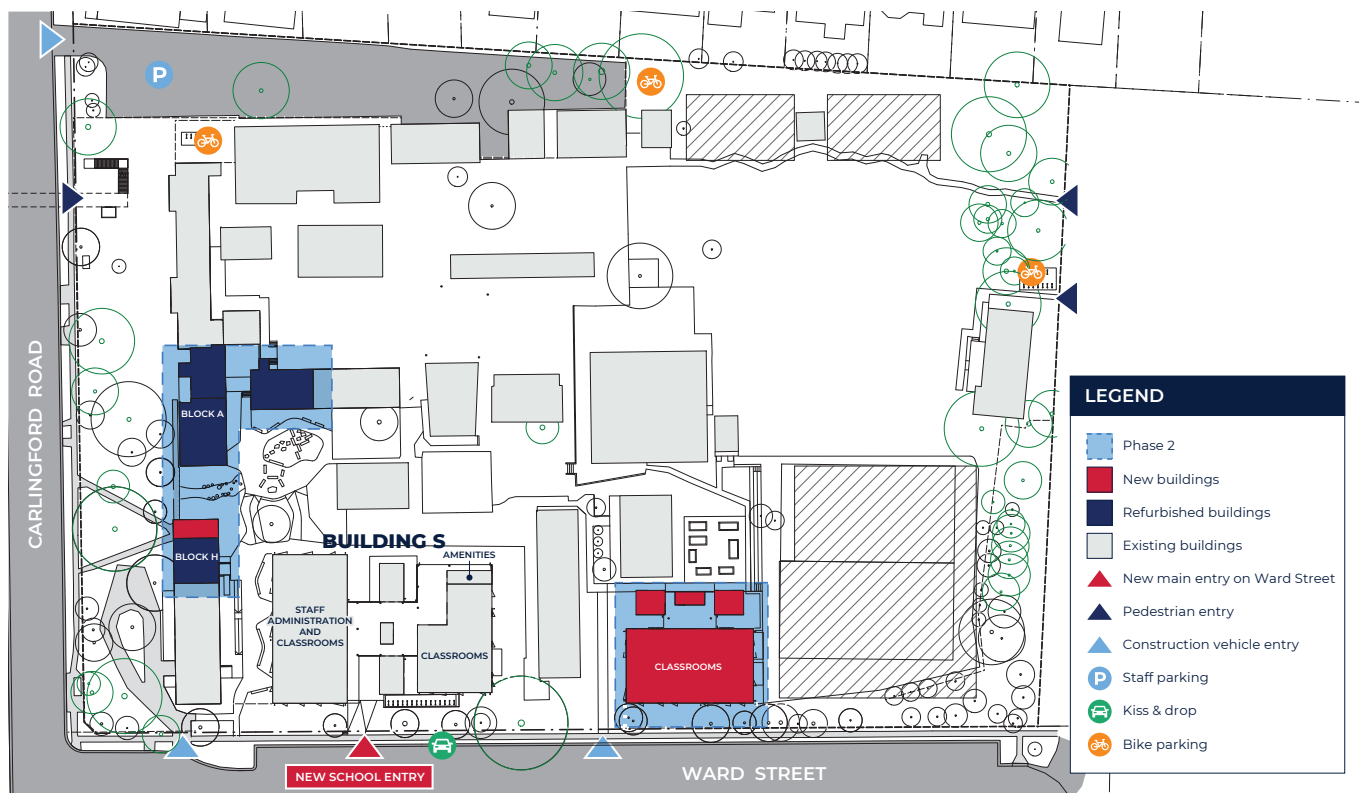
As part of the school upgrades, a new footpath along Ward Street will also be installed during the Term 4 Summer holidays. A notification will be shared with the local community closer to the time with more details on when this work will commence.

Removal of temporary home bases around the school

During the July school holidays removal of 16 temporary classrooms currently onsite will start.

A mobile crane will be installed and parked in the public parking bay area on Ward Street for the classrooms to be lifted safely off the school site. During the lifting of classrooms, traffic control measures will be in place. The removal of these buildings will not impact the school community.

Site map



What's next?

The project will now enter Phase 2. This phase of works includes:

- The partial refurbishment of Building A and H into flexible learning spaces.
- The installation of modular Building T.
- Removal of the remaining temporary classrooms from the school site.

For more information contact:

School Infrastructure NSW
Email: schoolinfrastructure@det.nsw.edu.au
Phone: 1300 482 651
www.schoolinfrastructure.nsw.gov.au

Frequently asked questions

Will any trees or vegetation be removed during the next phase of works?

Yes, two trees and some vegetation needs to be removed on the eastern side of the school grounds to allow the next phase of work to start. This work will be undertaken by the School Infrastructure NSW asset management team as an exempt development. As part of the upgrade project, new landscaping and planting is being delivered.

How will the operational area of the school be safely separated from the construction zone?

The construction site will be separated with timber fencing (known as 'hoarding') and will not pose a risk to staff, students or the local community.

When are Phase 2 works expected to be finished?

Phase 2 is expected to be finished in early 2023.

Contact us

For more information about this project contact School Infrastructure NSW:

Website: schoolinfrastructure.nsw.gov.au

Email: schoolinfrastructure@det.nsw.edu.au

Phone: 1300 482 651

For information about school activities and operations, contact the school directly:

Principal: Therese Hinder

Website: eppingwest-p.schools.nsw.gov.au

Email: eppingwest-p.school@det.nsw.edu.au

Phone: 02 9876 8255



Translation and Interpreting Service

If you require interpreter services in **Arabic, Bengali, Hindi, Nepali, Urdu** or any other language call **131 450** and ask this Translation and Interpreting Service to phone School Infrastructure NSW on **1300 482 651**.

For more information contact:

School Infrastructure NSW
Email: schoolinfrastructure@det.nsw.edu.au
Phone: 1300 482 651
www.schoolinfrastructure.nsw.gov.au

