



Example of innovative learning spaces we are building across NSW

Epping Public School

Project update

July 2019

Investing in our schools

The NSW Government is investing \$6.7 billion over the next four years to deliver 190 new and upgraded schools to support communities across NSW. In addition, a record \$1.3 billion is being spent on school maintenance over five years. This is the largest investment in public education infrastructure in the history of NSW.

Epping Public School

A project is underway to upgrade Epping Public School. The project will deliver:

- 22 new permanent teaching spaces
- a new library
- an upgrade of existing core facilities, including special programs rooms and administration.

Progress summary

Works on the new building continues. External cladding and internal works are underway and these will continue during Term 3 and 4.

New building to open early 2020

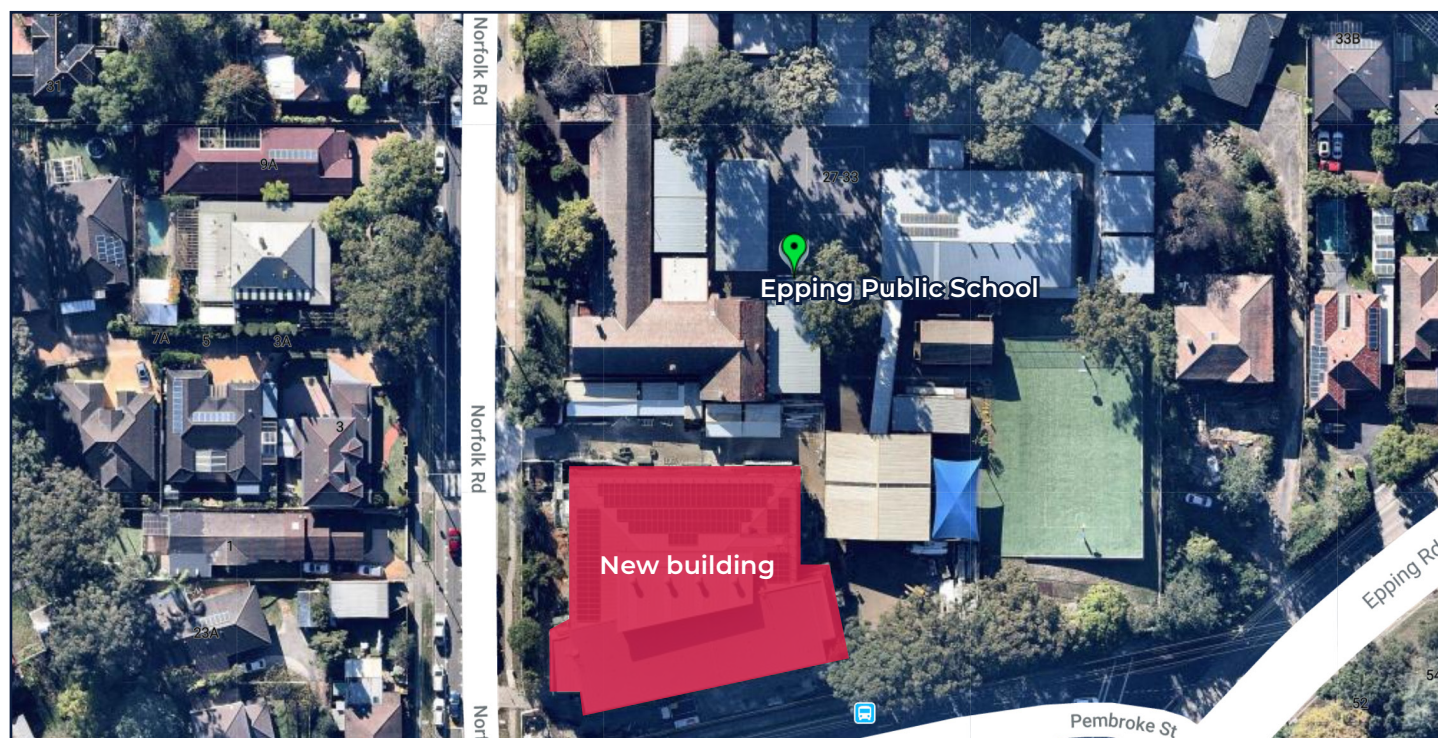
The upgrade to the school will be completed in two stages. The new homebase building will be completed early 2020 (Stage 1) followed by the refurbishment of the administration building (Stage 2).

We thank you for your patience during these works and are pleased to deliver this project for the school community.

Please see overleaf for more information.

For more information contact:

School Infrastructure NSW
Email: schoolinfrastructure@det.nsw.edu.au
Phone: 1300 482 651
www.schoolinfrastructure.nsw.gov.au



Frequently asked questions

What works will take place in Term 3?

We are here to make sure that work is completed safely and efficiently. We continue to work with the Principal and staff to ensure that disruptions are minimised. During Term 3, activities on the construction site will include final items like painting, floor finishes and installation of joinery units.

No works will take place on public holidays and Sundays.

What steps will be taken to control noise and dust impacts?

Hoarding and shade cloth have been erected to reduce noise and dust impacts on the school and our neighbours.

Dust from construction works will be hosed down with water as required.

How will traffic be managed?

Traffic management will continue to manage vehicles entering and exiting the site.

Will there be any change to the current school access?

No. Access arrangements for the school remain the same.

How will you keep us informed during construction?

School Infrastructure NSW will continue to share construction updates and project information as the project progresses.

We will provide information through project updates, our website and school newsletters.

Who can I contact if I have a concern about construction works?

If you have any queries or concerns about this project you can contact School Infrastructure NSW during business hours on 1300 482 651.

In an emergency, call triple zero (000).