

Eastwood Public School

Information pack | October 2021



Artist impression of the Eastwood public school upgrade

The NSW Government is investing \$7.9 billion over the next four years, continuing its program to deliver 215 new and upgraded schools to support communities across NSW. This is the largest investment in public education infrastructure in the history of NSW.

The NSW Department of Education is committed to delivering new and upgraded schools for communities across NSW. The delivery of these important projects is essential to the future learning needs of our students and supports growth in the local economy.

A project is underway to upgrade Eastwood Public School. The project will deliver:



9 new permanent flexible learning spaces



A new toilet block



Practical activity areas and breakout spaces

Progress summary

The construction program has been finalised and work onsite has begun.

Perimeter fencing has been installed to restrict access to the construction site and a separate entrance for the work zone has been established via Rutledge Street. A traffic management plan is being implemented, including traffic control procedures, off peak delivery times and a boom gate on the site entrance.

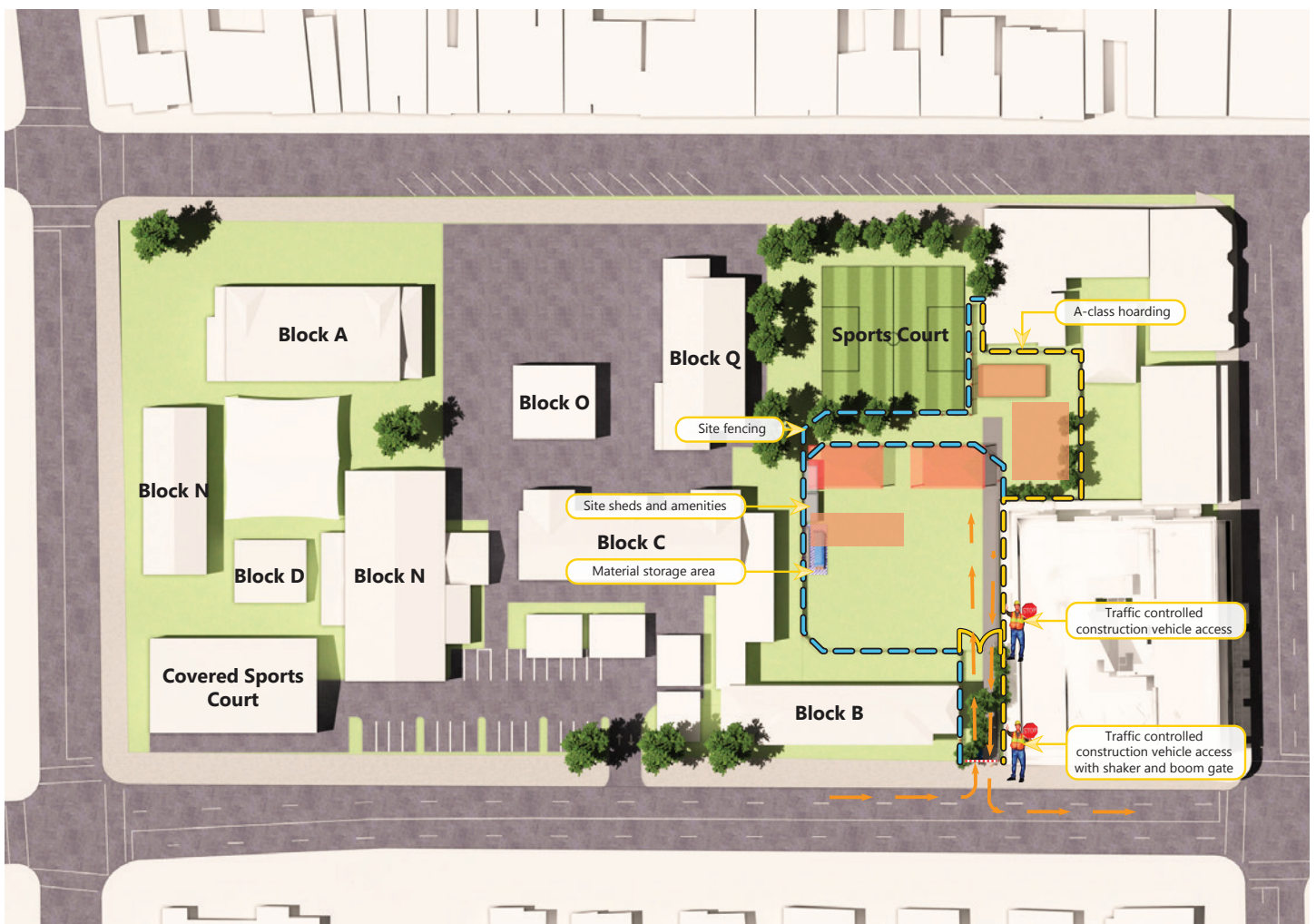
Demolition of the existing amenities block, cricket pitches and fencing has started and protective covers have been fitted onto identified trees.

Next steps

Over the next few months, demolition works will be completed and groundworks for both buildings will begin. Once the groundworks and foundation works are finished, the site will be ready for the pouring of concrete, this will be followed by the structural work for both buildings.

As the project progresses, all project updates and works notifications will be shared with the community and available on the [School Infrastructure NSW website](#).

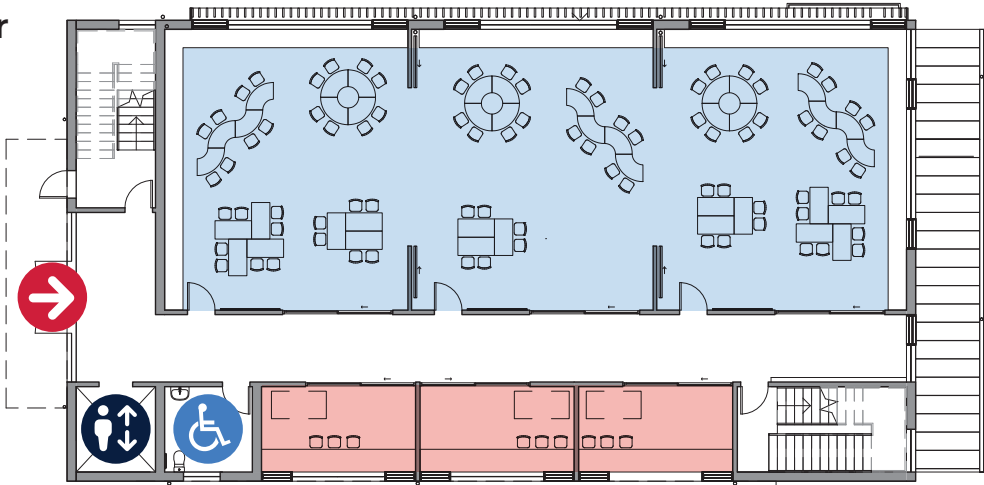
Site plan



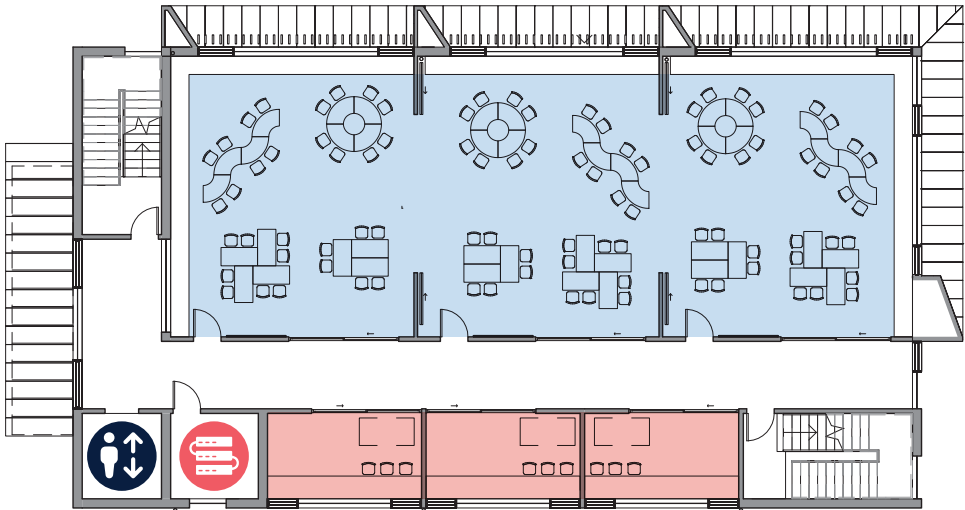
Homebases

The new homebase building will consist of three levels, each level will host flexible learning spaces, breakout rooms and practical activity areas.

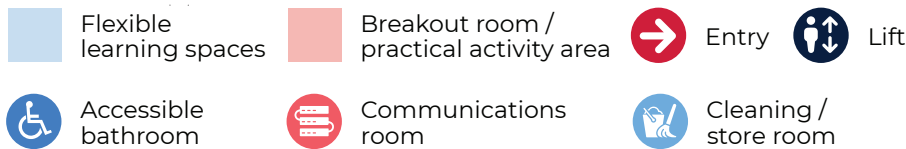
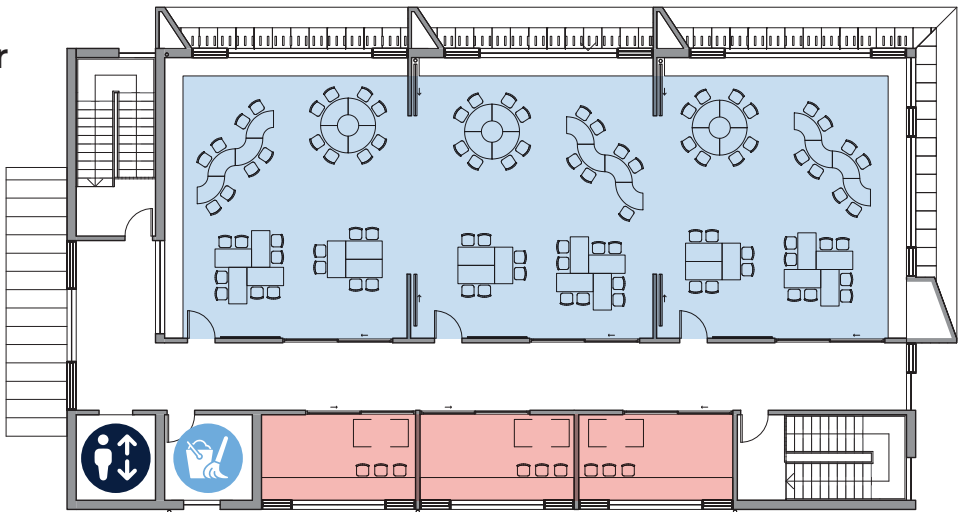
Ground floor



First floor



Second floor



Furniture layout is indicative only

Frequently asked questions

What is being delivered as part of the Eastwood Public School upgrade

The project at Eastwood Public school will deliver a new homebase building with nine permanent learning spaces, breakout rooms / practical activity areas and a new amenities building with upgraded bathrooms on the eastern side of the school. The surrounding open spaces will be landscaped for safety and practicality.

The project will increase open play area and provide accessible and adaptable facilities for students to continue to learn and grow.

What are the features of the new home base building?

The new homebase building will be approximately the same height as existing Block B homebase building and will consist of three levels, each level will include three flexible learning spaces, breakout rooms and practical activity areas. The building will include an elevator and an accessible bathroom as well as storage and communications room.

What are flexible learning spaces?

Flexible learning environments feature space, furniture and technology that support greater collaboration and improved learning outcomes. The new learning spaces have been designed with students at the centre, making them suitable for individual needs and interests.

More information about learning spaces can be found at edu.nsw.link/NaxHAg or by using the search function on the Department of Education website.

How will traffic be managed?

A construction traffic management plan is in place to ensure the safety of students, staff, the local community and our site workers. Traffic management will be implemented when required, including the use of onsite traffic control personnel to manage entry and exit of construction vehicles. Site vehicles will give way to pedestrians at all times. Wherever possible, truck movements will be scheduled to outside school drop off and pick up times.

What impacts will this project have on parking?

No parking spaces will be allocated to the project within the school grounds and construction vehicles will only access the job site via the separate entrance on Rutledge Street.

The location's limited street parking will be discussed during site induction, detailed information about alternate commuting options and parking facilities in the area will be provided to all workers.

Truck pooling and/or parking will not be permitted at any frontage to the project or any other roadway within the vicinity of the school during construction.

How will noise and dust be managed?

Noise and dust control measures will be implemented in accordance with planning approval requirements. Noise levels at the site will not exceed the noise control guidelines outlined in the EPA Environmental Noise Control Manual for construction and demolition works and equipment will be maintained with low noise control fittings such as exhaust, mufflers and sound proofing. The community will be notified ahead of any unusual high noise works.

Measures to control dust will be implemented during construction, including the hosing of dust on all unsealed areas as required and reduced construction works during high wind conditions.

When will construction be finished?

The project is anticipated to be finished in late 2022, depending on site and weather conditions.

Contact us

School Infrastructure NSW
Email: schoolinfrastructure@det.nsw.edu.au
Phone: 1300 482 651
www.schoolinfrastructure.nsw.gov.au



For a **Translation and Interpreting Service**, call **131 450** and ask them to call the Department of Education - School Infrastructure NSW on **1300 482 651**.

如果需要这则信息的译本, 请打电话 131 450 给笔译与口译服务处 (TIS), 请他们打电话 1300 482 651 给 Department of Education - School Infrastructure NSW (新州教育部中小学基础设施处)。

한국어로 이 정보를 요청하시려면 통번역 서비스 (TIS) 에 131 450 으로 연락하셔서 Department of Education – School Infrastructure NSW (교육부 – NSW 스쿨 기반시설)에 1300 482 651 로 전화하도록 요청하십시오.