

# Dundas Public School

Information Pack – November 2024



Artist impressions of the new building (subject to change)

## Project overview



Remove demountable buildings



6 new classrooms



2 multipurpose spaces, 2 learning commons



New amenities



A covered walkway connecting the new building to the existing school



### For more information

Phone: 1300 482 651

Email: [schoolinfrastructure@det.nsw.edu.au](mailto:schoolinfrastructure@det.nsw.edu.au)

Website: [schoolinfrastructure.nsw.gov.au](https://schoolinfrastructure.nsw.gov.au)

## Progress summary

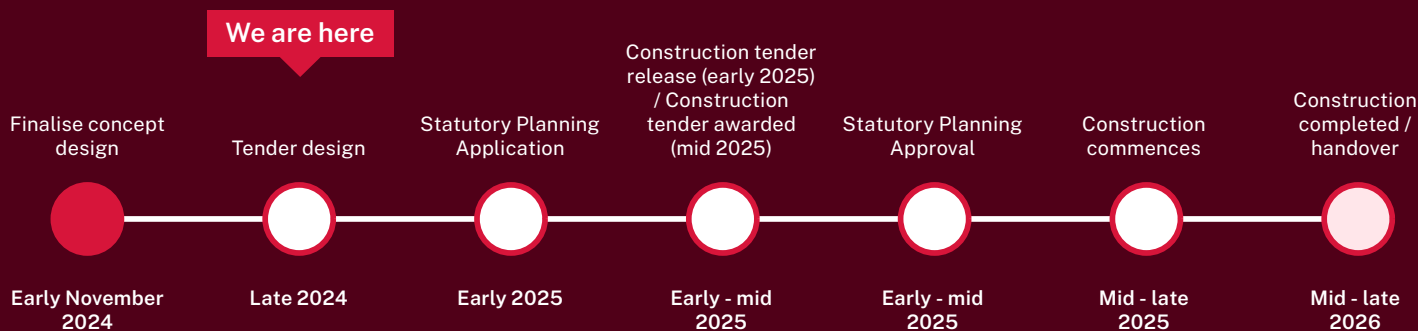
The design of the new building is progressing, as we complete the schematic design phase. We are currently discussing the materials and colours for the exterior, which will soon be approved by the school leadership team and project stakeholders. You can see an artist's impression of the building's façade on page 3, please note that this design may still change throughout design development.

We are also finalising the classroom designs and layouts in preparation for our planning submission in early 2025. When designing our new schools or school upgrades, we are guided by the NSW Educational Facilities Standard and Guidelines (EFSG). The EFSG has been developed to ensure we design and deliver the very best learning environments that support our teachers and meet the learning needs of all our students now and into the future.

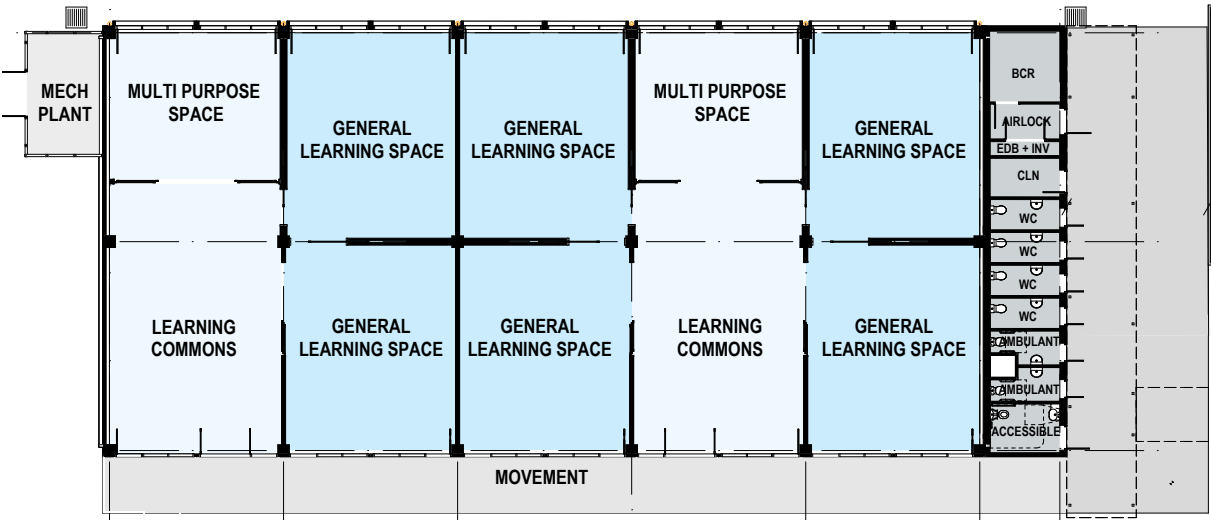
## Next steps

Planning lodgement is scheduled for early to mid 2025 along with the release and award of the construction tender for the upgrade. We anticipate construction on the new building to commence mid-late 2025.

## Timeline



# Floor Plan





Indicative design only, subject to change.


# Map of school


The map below shows the location of the new classroom building on the school site. The final location was selected because it integrates well with the existing layout of the school, and it allows for unrestricted access to the current school gates.

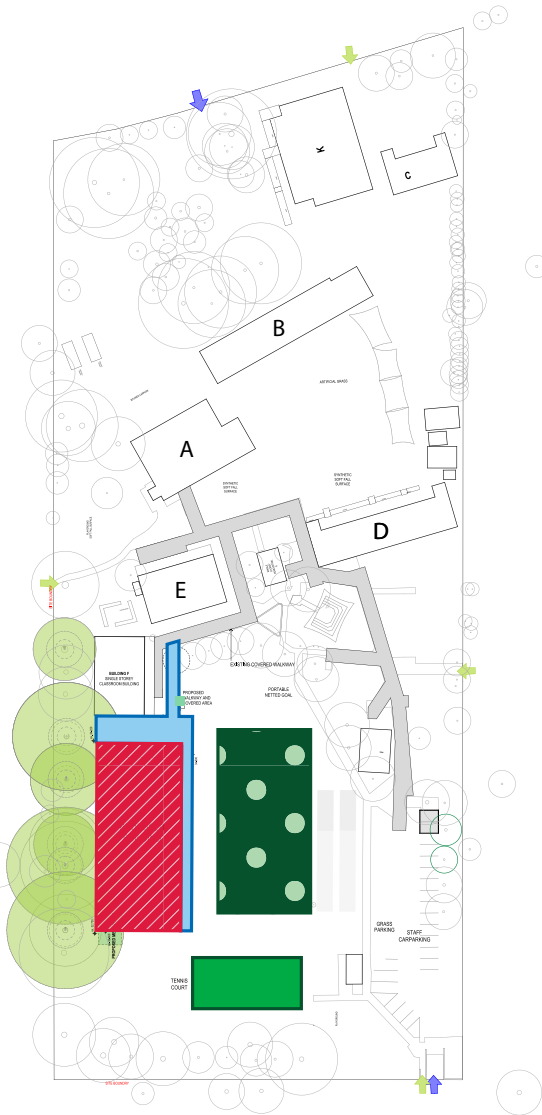
Legend

 New classroom building

 Existing sports field

 Existing tennis court

 Undercover walkway



## Artist impression of new classrooms



Artist impressions of the new building (subject to change)



Artist impressions of the new building (subject to change)

## Managing construction impacts



We will work with the contractor to manage impacts on the local community, and in close consultation with the Dundas Public School leadership to ensure that school operations continue with minimal disruption.

For more information about how we manage construction impacts on our projects, please visit [edu.nsw.link/ConstructionImpacts](https://edu.nsw.link/ConstructionImpacts) or scan the QR code.

## More information



You can find more information about the project at [edu.nsw.link/DundasPS](https://edu.nsw.link/DundasPS) or by scanning the QR code.

If you have any questions about this project, you can contact us during business hours on the contact details below.

For more information about this project, contact School Infrastructure:

**Website:** [schoolinfrastructure.nsw.gov.au](https://schoolinfrastructure.nsw.gov.au)

**Email:** [schoolinfrastructure@det.nsw.edu.au](mailto:schoolinfrastructure@det.nsw.edu.au)

**Phone:** Contact us between 9 am and 5 pm, Monday to Friday on 1300 482 651