

Darlington Public School

Project update

February 2020



Artist impression of the Darlington Public School

The NSW Government is investing \$6.7 billion over four years to deliver more than 190 new and upgraded schools to support communities across NSW. In addition, a record \$1.3 billion is being spent on school maintenance over five years. This is the largest investment in public education infrastructure in the history of NSW.



permanent, innovative and flexible learning spaces and pre-school



student facilities, including canteen and OSHC



hall



administration and staff facilities



library

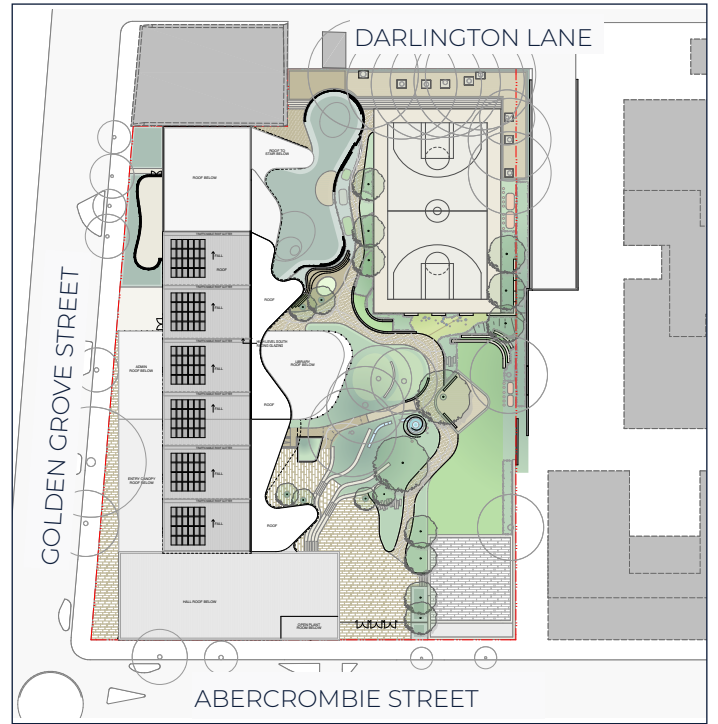


landscaped outdoor areas, including COLA

Site plan

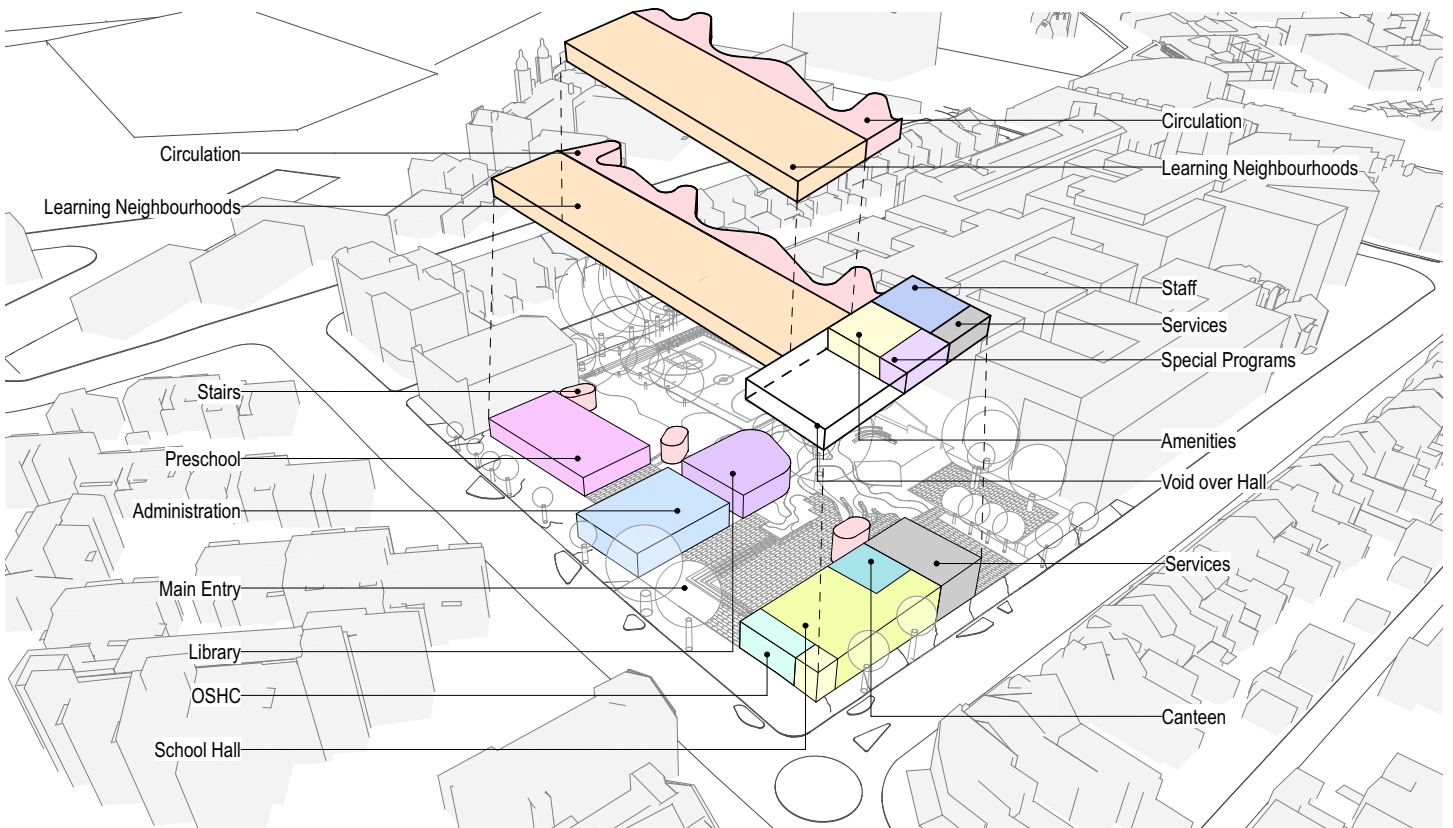


Existing site plan

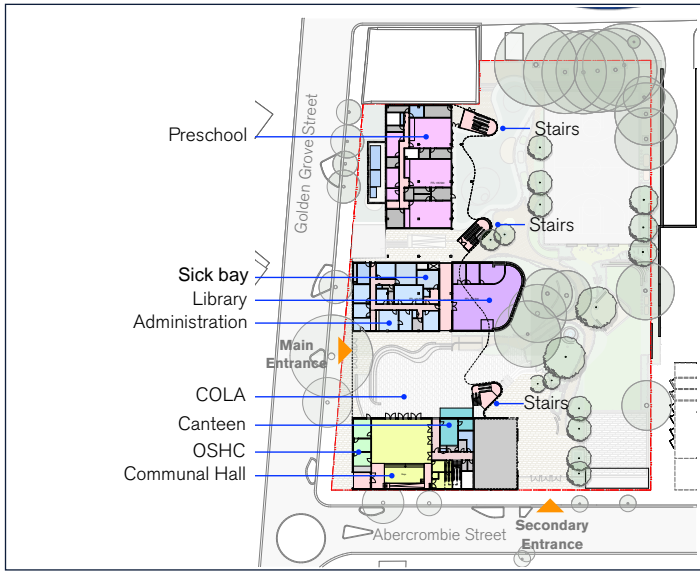


Proposed site plan

Functional relationships



Floor plans

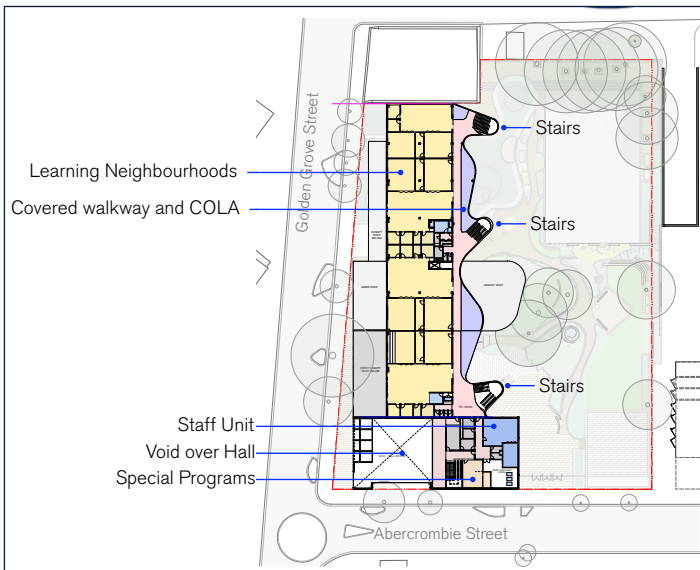


Ground Floor

Artist impressions



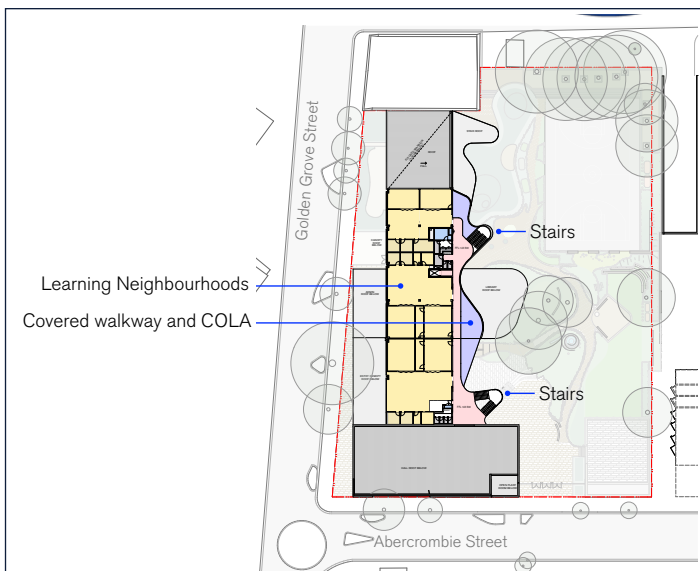
View from Golden Grove Street looking towards the hall and main entrance



Level 1



View from play court



Level 2



View looking towards library and playground

Project delivery



Early works

- Site establishment
- External works/open play area
- Temporary relocation of pre-school and OSHC

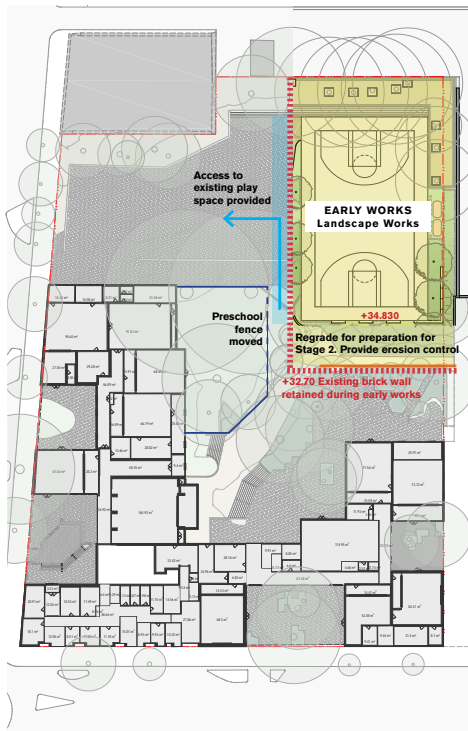
Stage 1

- Demolition of existing pre-school
- New pre-school
- New library and administration
- New homebases (12)

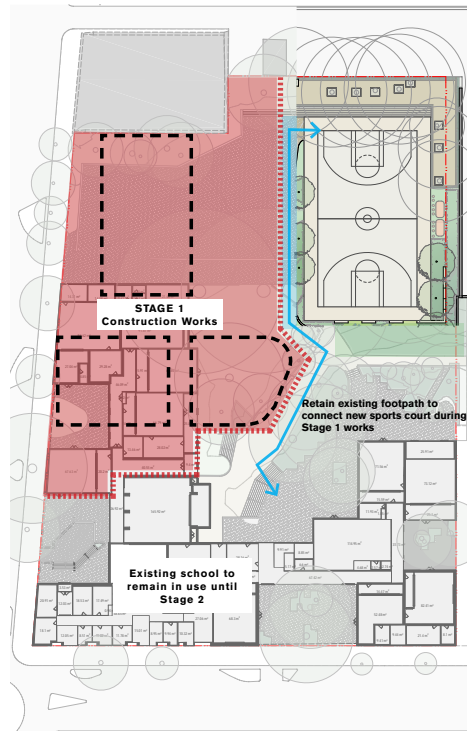
Stage 2

- Demolition of existing school buildings
- New hall with OSHC and canteen
- New COLA and external works
- Special program and staff spaces
- New homebases (7)

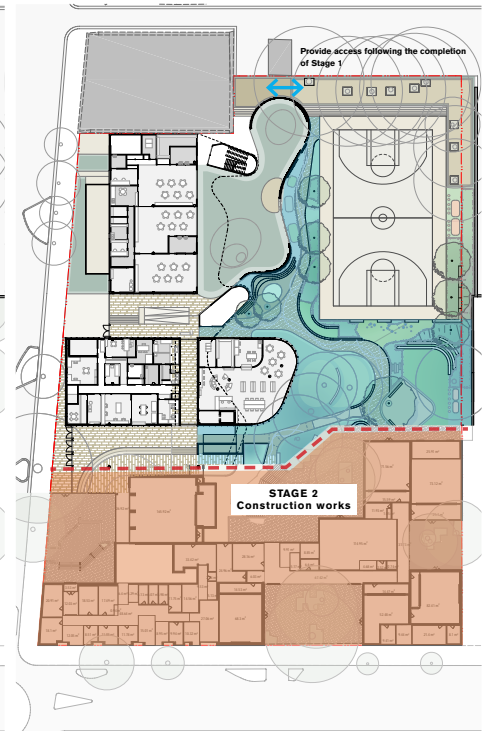
Early Works



Stage 1



Stage 2

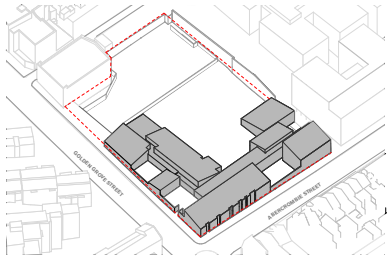


Delivery plan

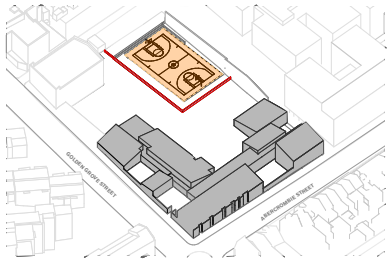


Artist impression during construction

Early works



Existing site

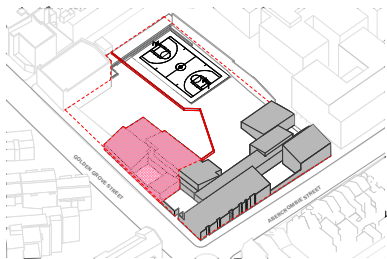


Early works

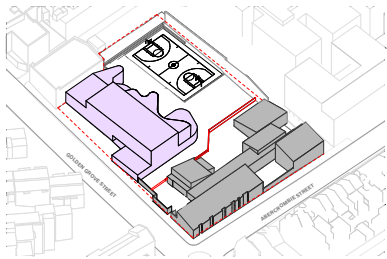


Artist impression of the Darlington Public School upgrade

Stage 1



Demolition

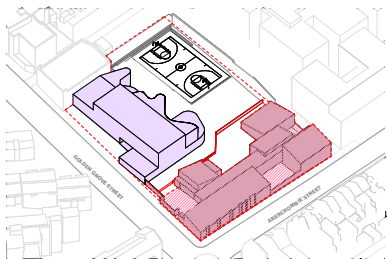


Stage 1 completion

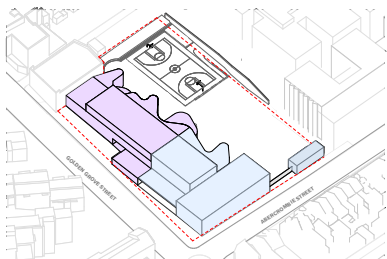


Artist impression during construction

Stage 2



Demolition



Stage 2 completion



Artist impression during construction

Frequently asked questions

Planning requirements

What is the statutory approval process?

All School Infrastructure NSW (SINSW) projects require statutory planning approval. As the Darlington Public School project is considered to be a State Significant Development (SSD), approval from the NSW Department of Planning, Industry and Environment (DPIE) is required to proceed.

When will the SSD Application (SSDA) be lodged and when will it be approved?

We expect to lodge the SSDA in May 2020. This process will follow DPIE's guidelines for SSDAs. As a part of the approval process, there will be a public exhibition period of 28 days during which the public can make a submission. Typically, the SSDA process can take between 9 to 12 months, or longer. Detailed information is available online at planningportal.nsw.gov.au

Project delivery

How will the project be delivered?

During construction the school will remain operational on the existing site. The project will be delivered in three stages:

- **Early works** of 2 to 4 months duration, commencing at the end of Term 4 2020 to allow sufficient time for school operations to plan accordingly. This stage includes external works, establishing a temporary work zone, relocating the preschool and Out of School Hours Care (OSHC), and clearing parts of the site in preparation for Stage 1 works.
- **Stage 1 works** of 12 to 18 months duration, with an expected start of early 2021 once the SSDA is approved. This stage will occur on the north western part of the school site and deliver the new administration building, library, preschool and 12 new learning spaces. A temporary hall and OSHC facilities will be included.
- **Stage 2 works** of 6 to 9 months duration will be completed by Day 1 Term 3, 2023 and deliver a new hall, canteen, OSHC and the remaining landscaping. At the end of the Stage 2 the project will be completed and handed over to the school.

School operations during construction

Will the school be relocated during construction?

No, the school will continue to operate at the existing site during construction.

Why have you decided to stay on site and not relocate to a temporary school?

The key principles that were considered before determining the approach to project delivery included, but were not limited to, potential conflicts between school operations and construction, the operating environment for the school during construction, construction impacts such as noise and dust, play space for children during construction, and the ability to control the surrounding environment. The safety and wellbeing of the school and local community is our highest priority before any other consideration.

The proposed design aligns with these key principles, allowing the project to be effectively delivered through a staged delivery strategy.

The need for a temporary, alternative location for the school during construction was not required in the delivery of Darlington Public School. This is consistent with other school redevelopments.

How will you manage the school operations and curriculum during construction?

The project team is working closely with school executive, senior department staff and school staff to ensure impacts are minimised to school operations throughout construction.

The project offers unique opportunities for educating students, including in areas of construction processes, resources, environmental issues, etc.

Will there be impacts during construction e.g. noise, dust, traffic?

The nature and extent of impacts will not be known until the design is finalised and statutory planning approval has been secured.

While there may be some construction impacts, mitigation measures will be in place to ensure minimal disruption to school operations.

Conditions in the planning approval from DPIE will ensure strict adherence to legislation and construction phase best practice.

Traffic and transport

Will the existing drop off and pick up zones change?

The existing drop off and pick up zones, school access points, spaces for pram and bicycle parking, and general traffic and pedestrian flows are being reviewed as part of this project.

Community and Council feedback on these matters will be incorporated into the design, and a traffic management plan will be lodged for public comment as part of the SSDA. Once the construction contractor is appointed, we will update the community on traffic arrangements during the construction period.

Will dedicated car parking be available in the new school design or during construction?

Staff parking is not presently available at the school and is not being considered as part of the project proposal. Service vehicle parking and an accessible visitor parking space are proposed.

Art, landscaping, and Aboriginal heritage

How are you responding to the local area characteristics and cultural heritage of the site?

The site, local area characteristics and cultural heritage have been respectfully considered in the design process. Community feedback and the recommendations of heritage and arborists reports have been included in the design where possible.

What elements of environmental sustainability have been considered in the design?

Green technology and sustainable design - such as solar panels, water retention, recycled materials, and landscaping sensitive to Aboriginal heritage have been included as part of the final concept design.

Are you consulting with local Aboriginal people?

An Aboriginal Cultural Heritage Assessment has been completed. Through this process, consultation has occurred with students, local community and registered Aboriginal parties, such as the Local Aboriginal Land Council. We have also engaged with a local Aboriginal representative from the National Centre for Indigenous Excellence (NCIE) at Redfern, who has attended a number of Project Reference Group meetings. We are also working closely with the school to preserve and integrate Aboriginal artworks into the new design.

Final design

What will the capacity of the upgraded school be?

The upgrade will provide increased capacity for up to 437 students at Darlington Public School.

Where will Out of School Hours Care (OSHC) be located in the new design?

The OSHC in the upgraded school will be located in the hall, adjacent to the canteen. The OSHC will have dedicated office, storage and kitchen spaces. Consideration has been given to equitable access for alternative hall activities or school events. Educational Facilities Standards & Guidelines (EFSG) have been applied in determining the location of the OSHC and canteen.

Are any community facilities being planned as part of the project?

There will be opportunities for the school to share facilities, particularly the hall, outside of school hours.

Will our feedback from the information sessions in 2019 be considered?

Yes. The feedback and suggestions from the school and local community have been highly valuable. The architects have considered all suggestions and incorporated them into the design where possible.



Indicative timeline



Progress summary

Darlington Public School is being upgraded to deliver new and upgraded facilities, innovative learning spaces, and provide for growing student enrolments in the area.

The master planning and concept design phases have now been completed. Throughout these phases, we have sought the school, neighbour's and community input across a broad range of themes and issues. The feedback has been incorporated, where appropriate, into the design. At every phase, the school values, characteristics of the site and the broader Darlington area have been respectfully considered.

Next steps

Preparations are underway for the final business case to be submitted to NSW Treasury. Once approved, the next key milestone will be the submission of a State Significant Development Application to DPIE, which we expect will occur by the end of May 2020. Construction can only proceed once the SSDA is approved.

Site staging and school operations

All options for the construction approach, known as the delivery methodology, have been investigated. A decision has been made to continue school operations on the existing site during construction.

How can I get involved?

Your feedback is important to us. We are committed to working together with our school communities and other stakeholders to deliver the best possible learning facilities for students.

We will keep the school community and residents informed as the project progresses.

For more information contact:

School Infrastructure NSW
Email: schoolinfrastructure@det.nsw.edu.au
Phone: 1300 482 651
www.schoolinfrastructure.nsw.gov.au