

Darlington Public School

Works notification

May 2022

A project is underway at Darlington Public School to deliver new facilities including learning and teaching spaces, a hall, a library, administration and staff facilities, a canteen and covered outdoor learning areas (COLAs). Early works began in December 2020 and are progressing well.

Darlington Public School main works update

Main works for the Darlington Public School upgrade commenced on Monday 1 March 2021.

Construction works are being coordinated across two stages to prioritise safety and amenity, minimise disruption and maximise open play space.

Stage 1 works are nearing completion, which includes the construction of a three storey building containing 12 innovative learning spaces, school administration area, library and preschool.

Works on Stage 2 of the project will start on Monday 23 May 2022. These works will include another seven new learning spaces, new staff facilities, new hall, new canteen and covered outdoor learning areas (COLAs).

Working hours

Working hours for Stage 2 works will remain the same as Stage 1 being:

- 7 am to 6 pm, Monday to Friday
- 8 am to 1 pm, Saturday.

There will be no work on Sundays or public holidays unless otherwise notified.

Stage 2 works from 23 May 2022

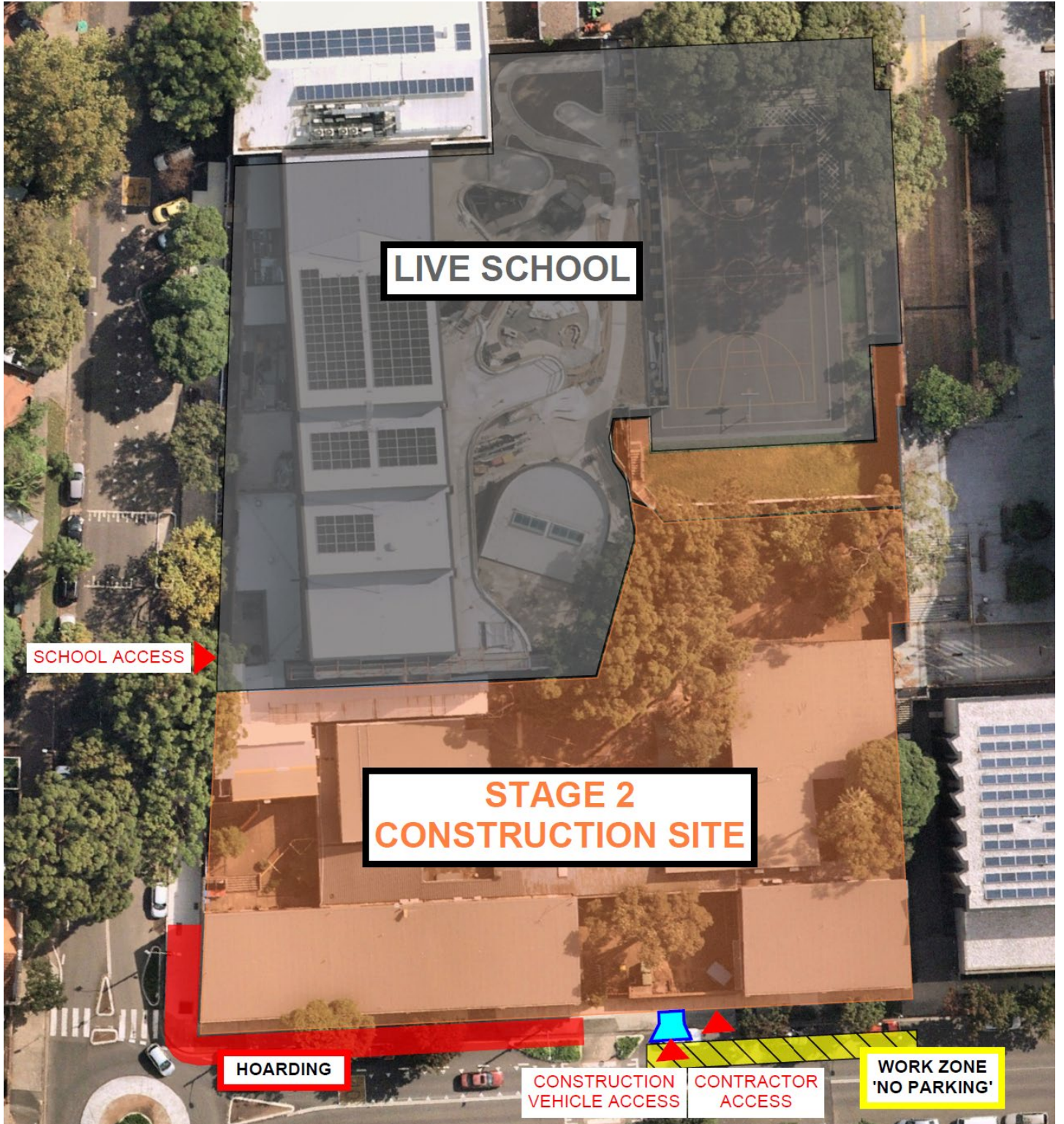
From Monday 23 May 2022, a new work zone will be established on the southern side of the site facing Abercrombie Street. This work zone will include a portion of Abercrombie Street at the south east corner of the site, which will remove public parking in this area for the duration of Stage 2 works. See map on reverse page.

Pedestrian arrangements

Fencing and scaffolding around pedestrian walkways (known as 'B-Class hoarding') will be installed around the site at the corner of Golden Grove and Abercrombie Streets. Installation is expected to take place from 23 May 2022. Temporary pedestrian diversions and traffic management will be in place while the hoarding is installed.

For more information contact:

School Infrastructure NSW
Email: schoolinfrastructure@det.nsw.edu.au
Phone: 1300 482 651
www.schoolinfrastructure.nsw.gov.au



For more information contact:

School Infrastructure NSW
Email: schoolinfrastructure@det.nsw.edu.au
Phone: 1300 482 651
www.schoolinfrastructure.nsw.gov.au

Remediation works

Stage 2 of the Darlington Public School upgrade includes demolition and excavation works. These works include making safe existing parts of the site where hazardous materials including asbestos and lead paint are present within existing buildings and the soil.

The material is to be remediated in line with hygienist advice over a period of three months starting from Monday 23 May 2022.

Safety measures and monitoring are in place to ensure there is no risk to the local community. The area is within the construction site and is not accessible by students, staff or the public.

Areas will be remediated in accordance with the Department of Education's Asbestos Management Plan and SafeWork NSW regulations. All work will be completed by licensed and accredited contractors, and monitored by occupational hygienists in strict accordance with all applicable legislation, regulations, policies and guidelines.

Testing will be completed to ensure the area has been fully remediated. The project contractor will receive a clearance certificate before further construction activities commence.

The health, safety, and well-being of the school and the local community is our highest priority and we will continue to keep the community updated. Please be assured that the removal of this material will not pose a risk to the local community.

How will dust and noise be managed during construction?

Any activity that could exceed approved construction noise management levels will be managed in accordance with the Protection of the Environment Operations Act 1997. Noise will be kept to a minimum as best as possible during the construction, and dust as a result of demolition and excavation, will be hosed as required.

Trucks making deliveries to the site will have their loads covered. The site will undergo air monitoring during inground works and noise and dust will be appropriately managed throughout construction in accordance with the State Significant Development application consent conditions.

How will traffic impacts be managed during construction?

The contractor's access to the site will be through the new Abercrombie Street access points for personnel and vehicles. Movement of construction vehicles will be restricted at drop-off and pick-up times to limit congestion around the school.

Health and safety during construction

All work will be undertaken in accordance with SafeWork NSW regulation. All construction impacts will be controlled in accordance with the relevant management plans. The health and safety of the school and community are our highest priority.

If you have any concerns about this project, you can contact School Infrastructure NSW during business hours on 1300 482 651. In an emergency, call triple zero (000). We are here to make sure that work is completed safely and efficiently and we will minimise impacts on the community at every opportunity.

Thank you for your patience while we deliver this important school infrastructure.

For more information contact:

School Infrastructure NSW
Email: schoolinfrastructure@det.nsw.edu.au
Phone: 1300 482 651
www.schoolinfrastructure.nsw.gov.au