

# Darlington Public School

## Stage 1 Welcome pack



New preschool outdoor play space at Darlington Public School

## Welcome to your school

We're excited that Stage 1 of the upgrade of Darlington Public School facilities is finished and ready for you to use. These facilities include:



9 new learning and teaching spaces



3 new preschool classrooms



A new library

Thank you for your patience during construction. We are thrilled to deliver this project for the school community.

# Message from your Principal

---

A very warm welcome to Darlington Public School!

We are extremely excited to be able to transition all students and staff into Stage 1 of our brand-new school.

The new flexible teaching and learning spaces will allow teachers to design a wide range of activities to develop students' skills and knowledge, encouraging both an individual and collective voice. This will bring greater opportunities for collaborative, innovative and interconnected learning experiences for all of our students.

There is a three-class state of the art Preschool unit, and we have seven classes from Kindergarten to Year 6. We currently have specialist programs in the areas of Library, Italian, Performing Arts, Physical Education, Learning and Support, and High Potential and Gifted Education. Students from Kindergarten to Year 6 will soon have weekly specialist sessions in music and guitar lessons.

Our students are fortunate to have a variety of spaces to run, play ball games, explore, create, rest, and relax.

We proudly continue to provide vibrant, safe, and supportive learning environments where students learn and grow to be confident, resilient, self-directed 21st Century citizens.

Darlington Public School is a warm, friendly, and welcoming learning community. We look forward to sharing our amazing new spaces and welcoming you to experience the wonder of being part of our exceptional school.

**Michelle McCormack**  
Principal, Darlington Public School

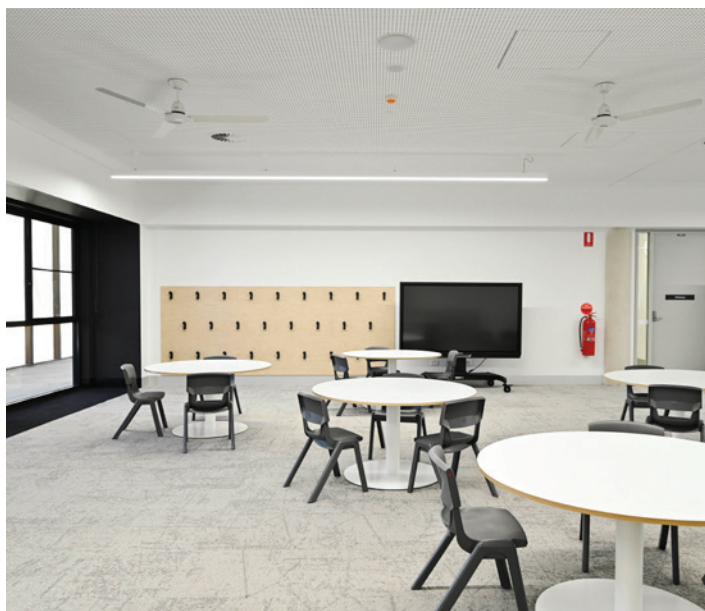
## Flexible learning spaces

---

This exciting project has delivered new learning environments for the next generation of young minds. The new learning environments offer flexibility where teachers can provide more opportunities for student engagement. The learning spaces:

- are adaptable to accommodate small or large groups
- provide accessibility to new technology in a variety of settings
- encourage a personalised learning experience so students learn at their own level and pace.

The learning spaces at Darlington Public School are organised in hubs for each age group, providing a collection of diverse yet interrelated spaces that support the different ways students learn. Furniture and fittings have been chosen to meet the needs of each age group, and each learning hub has access to an outdoor learning area.



Collaboration space – Level 1

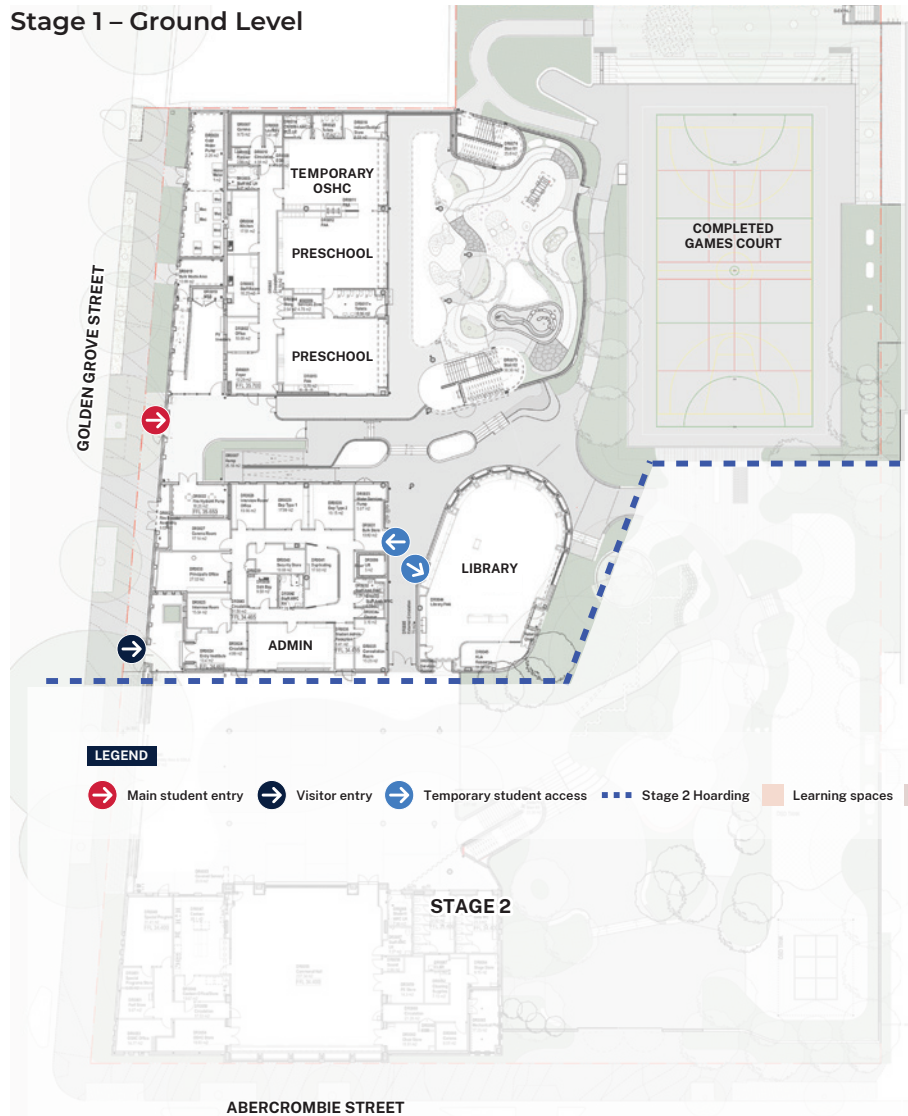


Preschool learning space

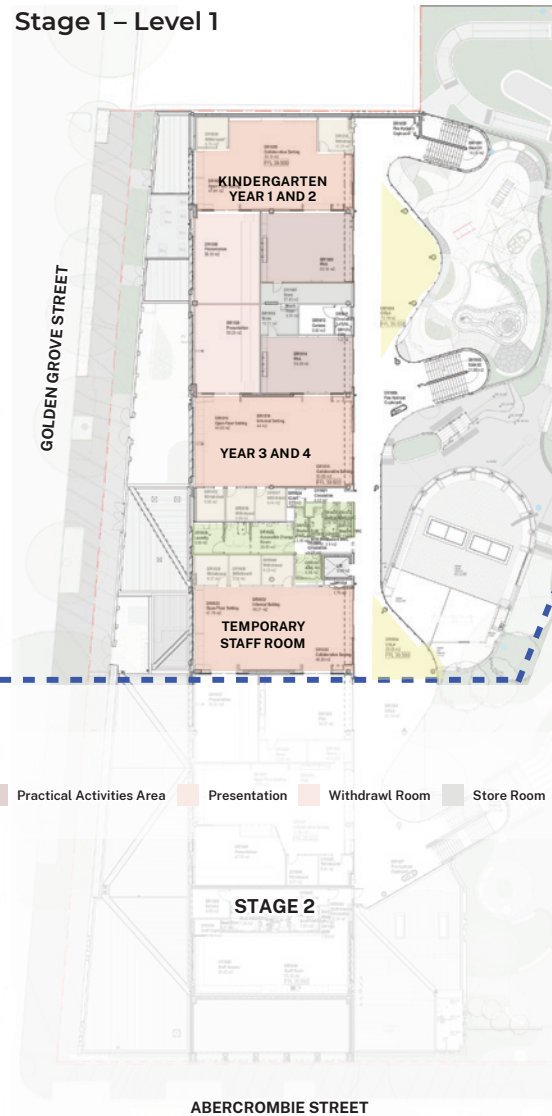


# Darlington Public School Stage 1 site map

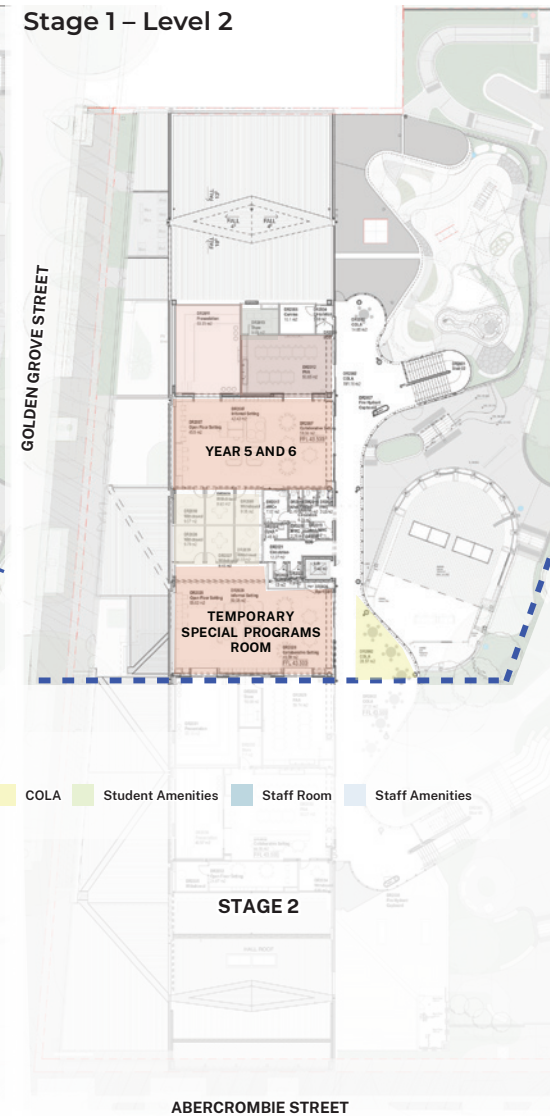
Stage 1 – Ground Level



Stage 1 – Level 1



Stage 1 – Level 2

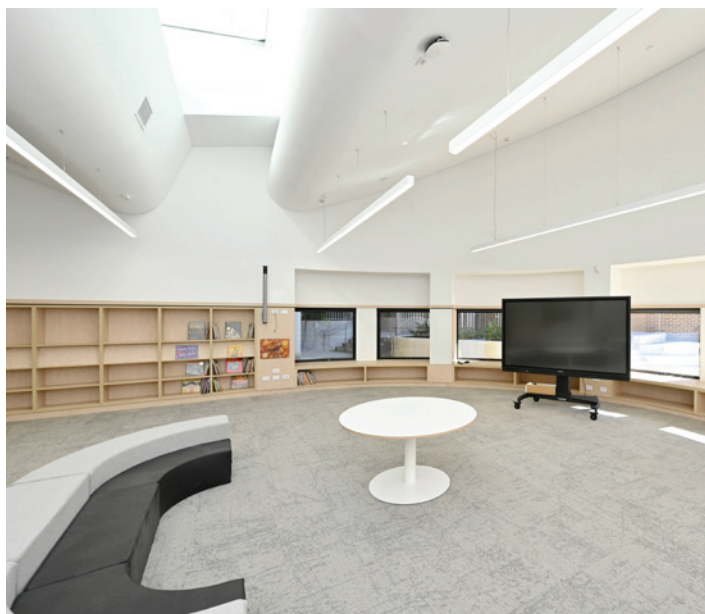


**LEGEND**

- ➔ Main student entry
- ➔ Visitor entry
- ➔ Temporary student access
- Stage 2 Hoarding
- Learning spaces
- Practical Activities Area
- Presentation
- Withdrawal Room
- Store Room
- COLA
- Student Amenities
- Staff Room
- Staff Amenities

## Library

The library is the heart of the new facilities and acts as a new focal point for the school and connection to the outdoor landscape and playground. The library contains a functional practical activities space combined with window seating and a central space for communal gathering and class reading. Staff facilities include a service desk, an office and store room.



## Preschool

The preschool have received its own external play area with a central circular pathway mixed with different materials and coloured concrete, surrounded by a mix of new play equipment, soft fall and AstroTurf play areas.



## Stage 2

Stage 2 works will start once the school moves into the new facilities. Stage 2 will deliver:

- 7 more new learning and teaching spaces
- A new hall
- A new canteen
- New staff facilities
- Covered outdoor learning areas (COLAs).

As the school moves from the existing buildings to the new school, new hoarding will be set up around the new Stage 2 work zone including through the school and over the footpaths.

The initial works for Stage 2 will include internal strip out and demolition of existing buildings and clearing of site, earthworks, piling and in-ground services.

Stage 2 works are expected to be completed in early 2023.

## Contact us

For more information about this project contact School Infrastructure NSW:

**Website:** [schoolinfrastructure.nsw.gov.au](http://schoolinfrastructure.nsw.gov.au)

**Email:** [schoolinfrastructure@det.nsw.edu.au](mailto:schoolinfrastructure@det.nsw.edu.au)

**Phone:** 1300 482 651

For information about school activities and operations, contact the school directly:

**Principal:** Michelle McCormack

**Website:** [darlington-p.schools.nsw.gov.au](http://darlington-p.schools.nsw.gov.au)

**Email:** [darlington-p.school@det.nsw.edu.au](mailto:darlington-p.school@det.nsw.edu.au)

**Phone:** 02 9516 2300