

# Project overview

The upgrade of Darcy Road Public School will include new permanent learning spaces and core facilities to support the growing population in Western Sydney.

 New buildings with **45** flexible learning spaces

 New staff administration facilities

 A new library

 A new canteen

 A refurbished hall

 A car park extension

 Improvements to open spaces



An example of the primary school learning spaces we are delivering across NSW

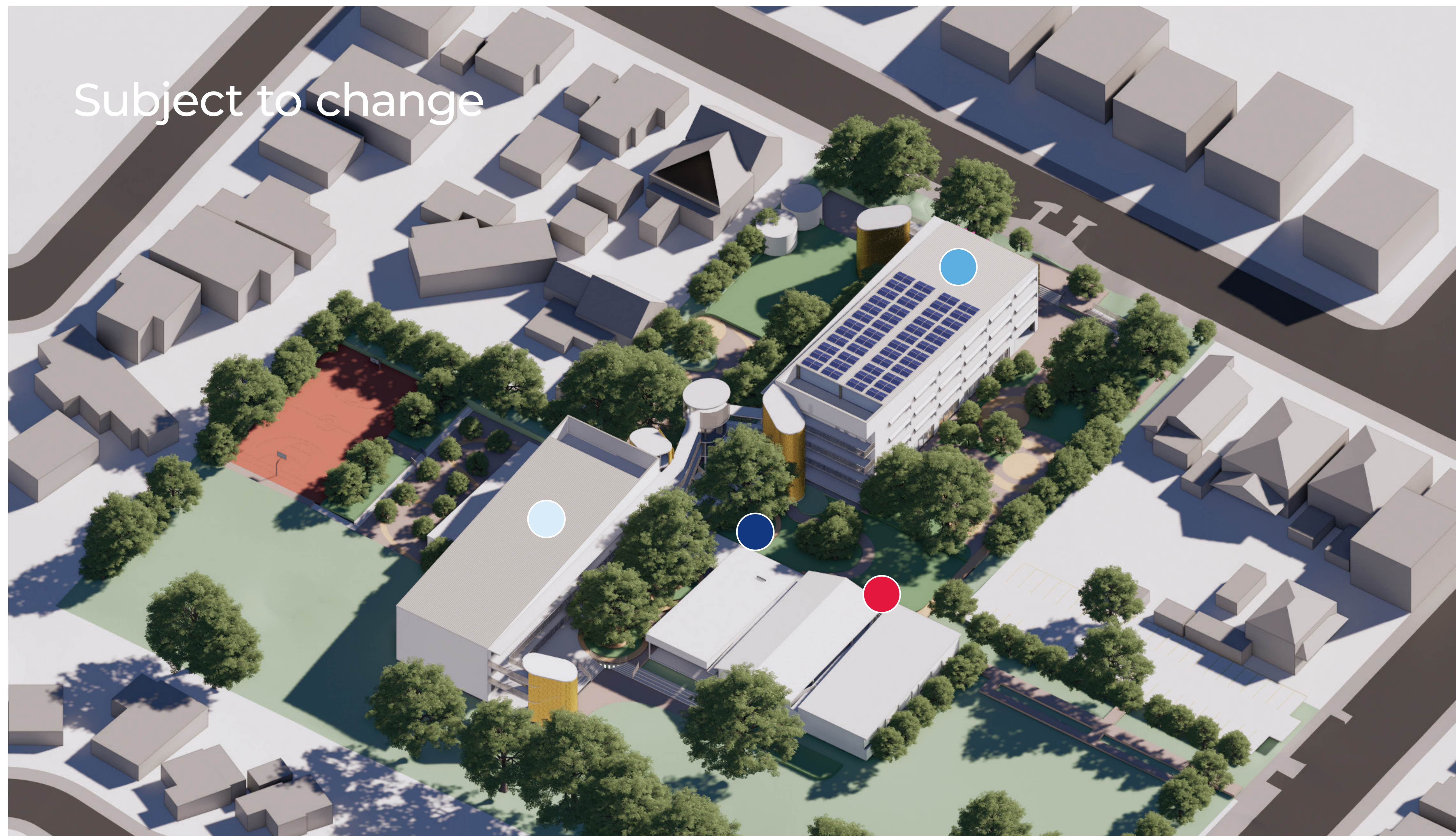
## Darcy Road Public School upgrade

For more information phone: 1300 482 651  
Email: [schoolinfrastructure@det.nsw.edu.au](mailto:schoolinfrastructure@det.nsw.edu.au)

# Concept design site plan

New learning spaces and core facilities will expand the capacity of Darcy Road Public School to 1000 students. The project will include the demolition of all existing school buildings, except for the hall, and removing demountable classrooms.

The concept design places new buildings, of up to four storeys, in the centre of the school site to benefit from the shade of existing trees and maximise play space. The design may change as part of the ongoing design development process.



## Legend

- Covered outdoor learning area (COLA)
- Refurbished hall
- Learning spaces, admin and staff facilities
- Learning spaces, special programs and library

## Darcy Road Public School upgrade

For more information phone: 1300 482 651  
Email: [schoolinfrastructure@det.nsw.edu.au](mailto:schoolinfrastructure@det.nsw.edu.au)

# Landscape design concept

## Legend

- ① Vehicular drop off
- ② Main arrival plaza
- ③ Multipurpose sports/ flexible open space
- ④ Covered outdoor learning area (COLA)
- ⑤ Breakout space
- ⑥ Amphitheatre
- ⑦ Community garden
- ⑧ Ceremonial lawn
- ⑨ Existing car parking
- ⑩ Free play space
- ⑪ Flexible lawn
- ⑫ Structured play
- ⑬ Bike stands



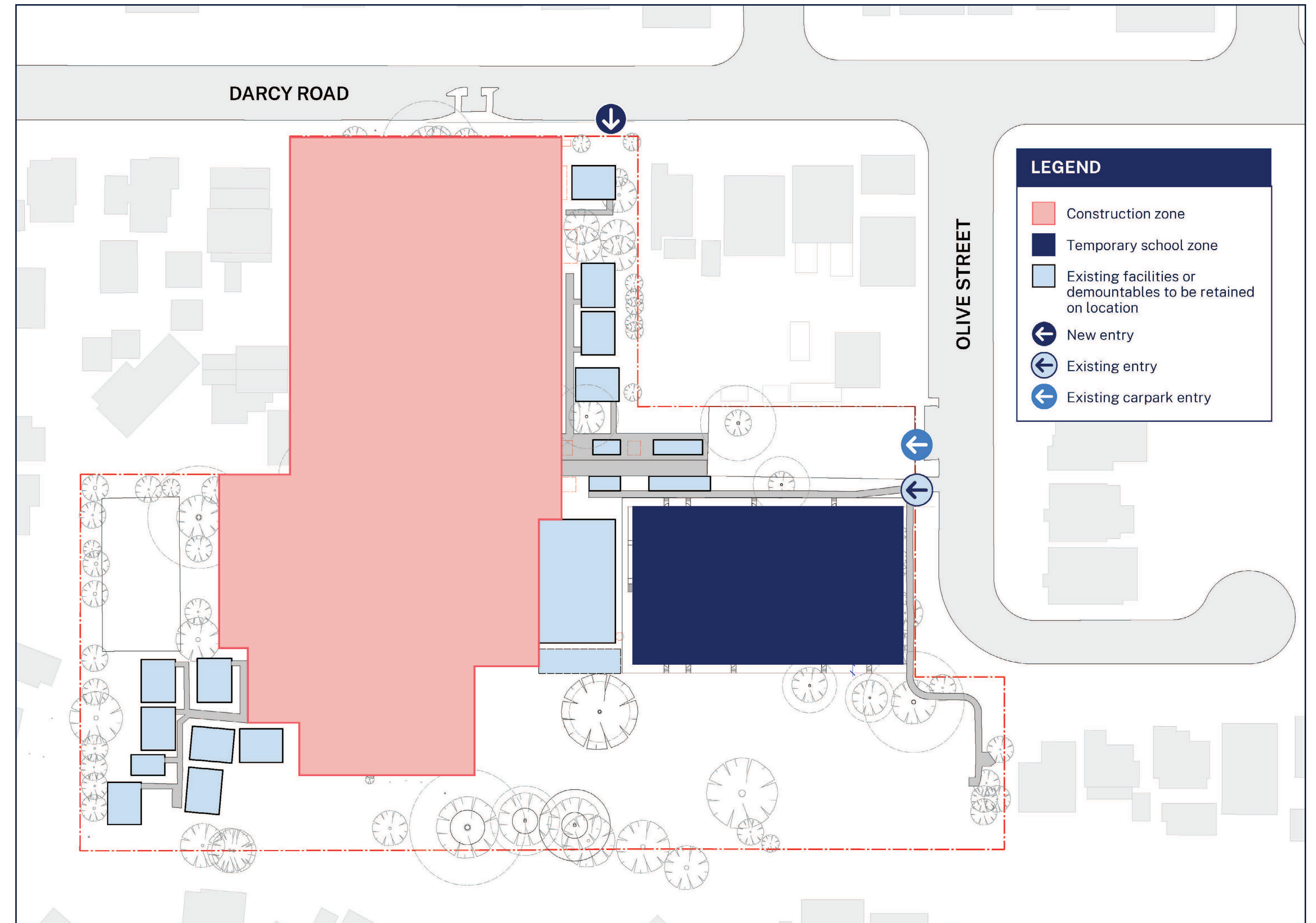
## Darcy Road Public School upgrade

For more information phone: 1300 482 651  
Email: schoolinfrastructure@det.nsw.edu.au

# Temporary school arrangements

Existing school buildings will need to be demolished to make way for the new buildings. During construction, a temporary school will operate in demountable classrooms located on the school's oval.

The site plan below shows the proposed location for the temporary school which is subject to change.



## Darcy Road Public School upgrade

For more information phone: 1300 482 651  
Email: [schoolinfrastructure@det.nsw.edu.au](mailto:schoolinfrastructure@det.nsw.edu.au)

# Sustainable design features

The project is targeting Green Star certification for sustainable design through features including:



modular construction allowing for flexibility



walkways that provide shading



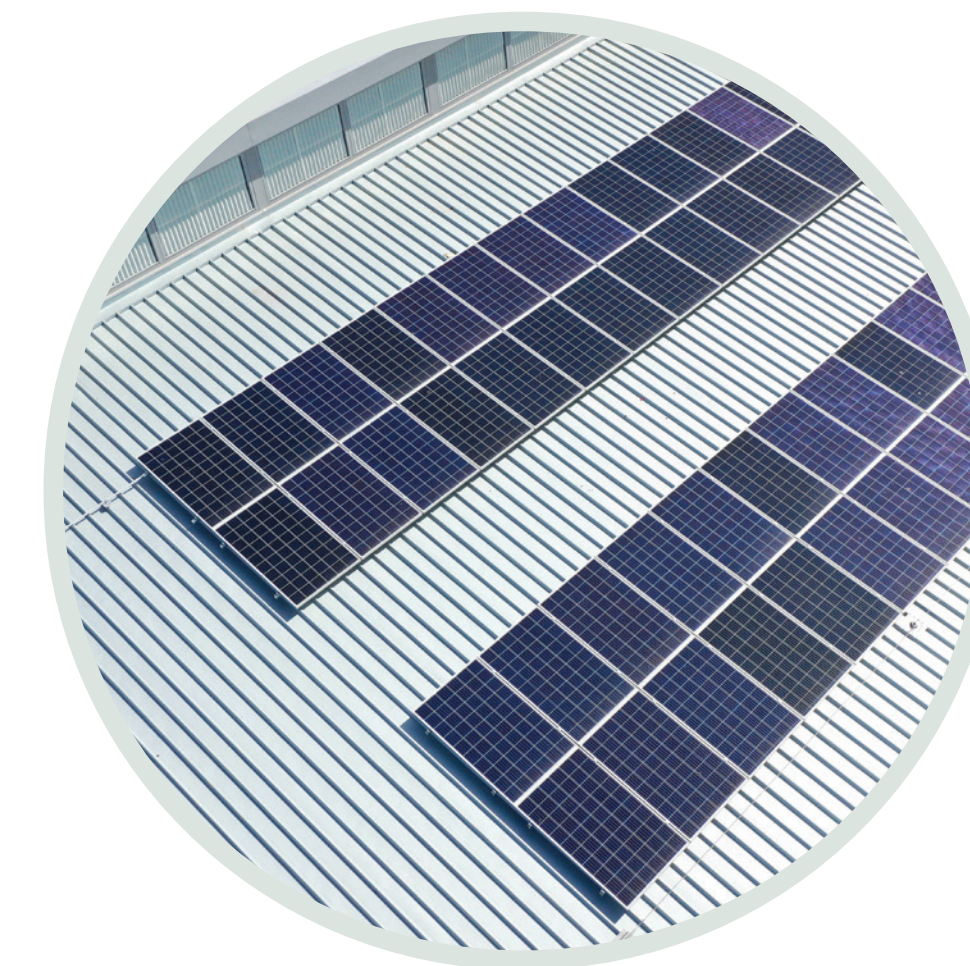
maximising shade and temperature control from the tree canopy



sustainable building materials



natural cross ventilation



energy generation



rainwater harvesting



cycle parking

Images are examples only and may not reflect the actual design

## Darcy Road Public School upgrade

For more information phone: 1300 482 651  
Email: [schoolinfrastructure@det.nsw.edu.au](mailto:schoolinfrastructure@det.nsw.edu.au)

# Flexible learning spaces

Contemporary learning and teaching prepares students for a diverse and interconnected world. We are evolving the ways we teach our students new skills valued by a changing workforce, understand different ways students learn and support new ways of interacting with information through technology.

Flexible learning spaces are designed and equipped to support contemporary learning and teaching.

## What makes a flexible learning space?



### Learning space

- Different zones (areas of a building or floors) are designed to support a range of activities sometimes grouped by subject area
- Varied furniture allows for student choice, comfort and flexibility
- Spaces are flexibly connected allowing students to work in varied group sizes
- Connection between indoor and outdoor learning spaces



### Organisation

- Movement is encouraged for students and teachers to collaborate and interact
- More than one teacher may be available to students within the learning environment
- Students learn in classes, small groups or individually



### Teaching and learning

- Learning is personalised
- Learning is connected across different subject areas
- There is a focus on creativity and innovation with students prototyping, testing and using technology in creative ways



### Technology

- Technology is integrated into spaces to extend learning opportunities
- WiFi is available everywhere including outdoors
- Specialist equipment is available for students to innovate, communicate and create

## Darcy Road Public School upgrade

For more information phone: 1300 482 651  
Email: [schoolinfrastructure@det.nsw.edu.au](mailto:schoolinfrastructure@det.nsw.edu.au)

# How standardised learning hub layouts work in practice

STEP 1



STEP 2



STEP 3



STEP 4

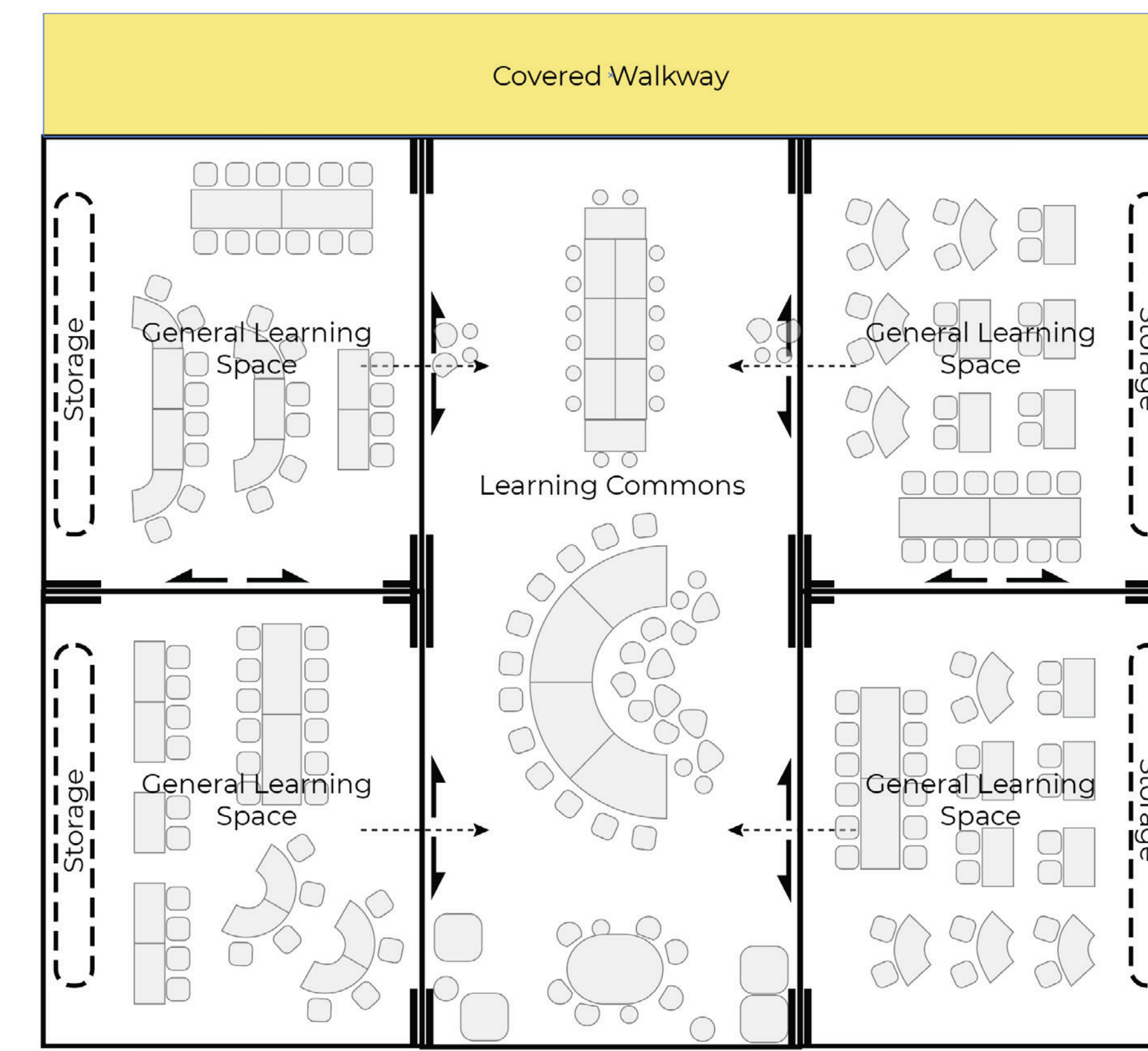
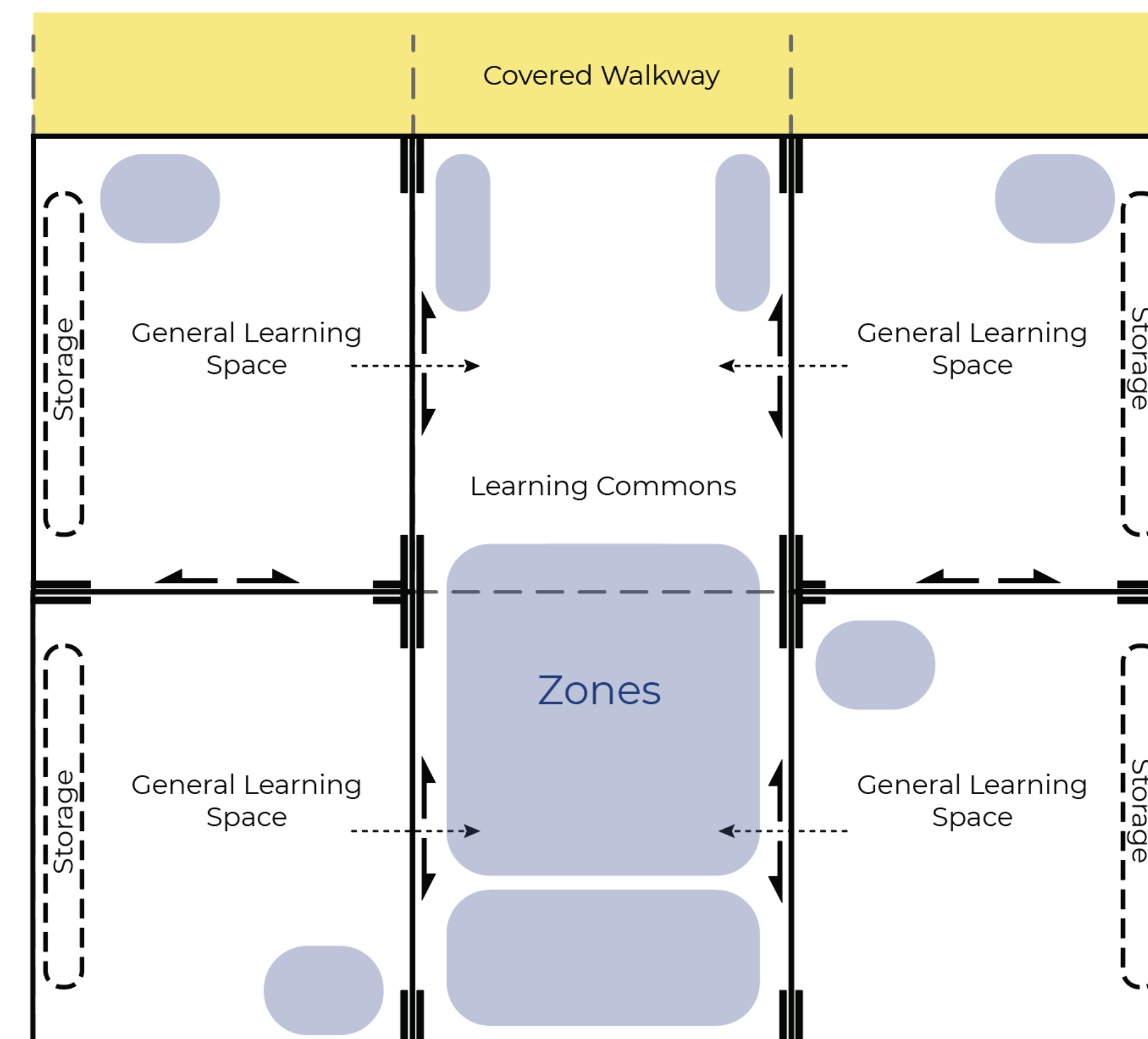
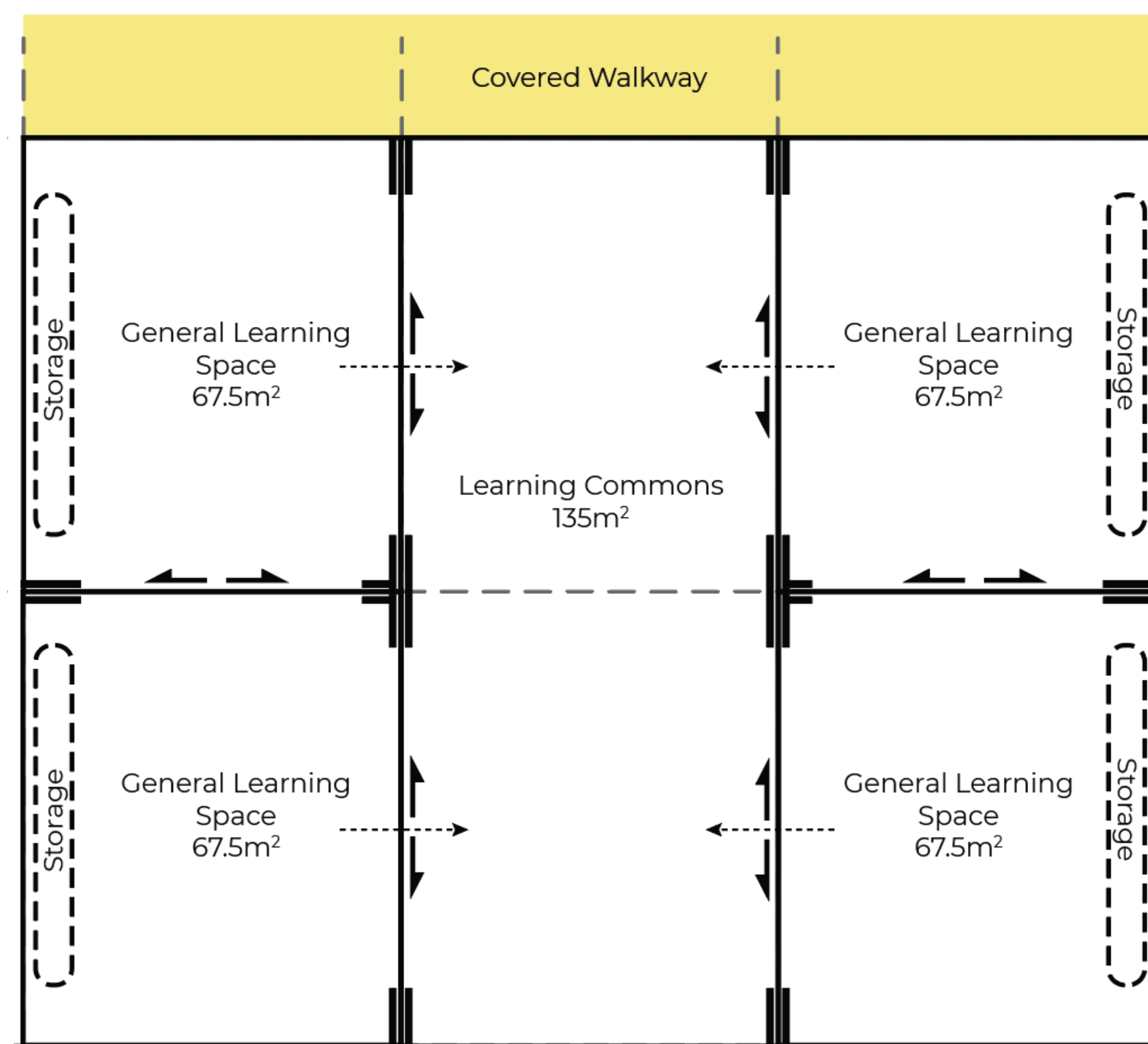


Standardised design for a primary school learning hub, featuring 4 learning spaces and a learning commons.

The design is modified to suit the school context outlined in the education rationale. Schools can include practical activity areas (PAAs), STEM spaces or other multi-purpose spaces (MPSs) that support collaboration, preparation or sensory needs.

Furniture settings are selected to align to local teaching and learning requirements. Furniture selection is supported by professional learning and other resources.

From a 2D plan to a flexible learning space, ready for students to engage in their learning activities.



## Darcy Road Public School upgrade

For more information phone: 1300 482 651  
Email: schoolinfrastructure@det.nsw.edu.au

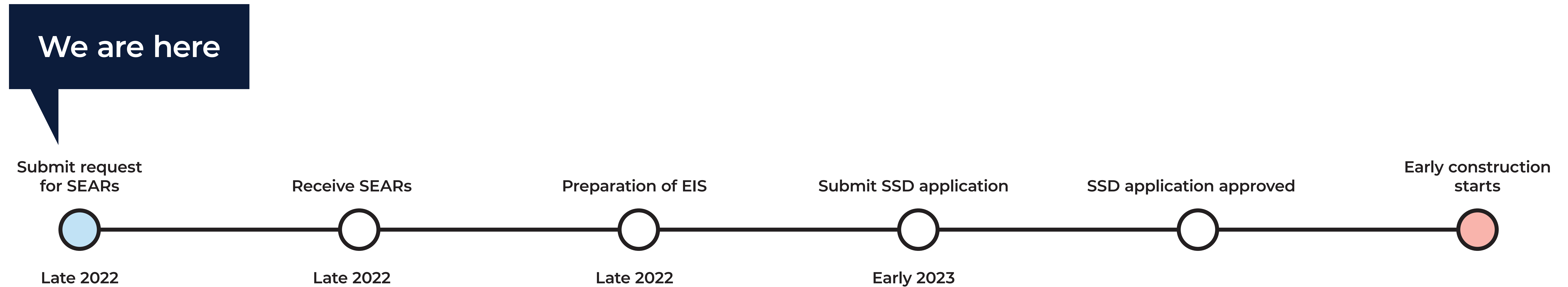
# What's next?

The upgrade to Darcy Road Public School is considered a State Significant Development (SSD) and therefore the NSW Department of Planning and Environment (DPE) will assess the development application (DA) for the project.

We have started the planning approval process by submitting a request to DPE for the Secretary's Environmental Assessment Requirements (SEARs) which will tell us the studies that need to be included as part of the application.

As part of the SSD application, we will prepare an Environmental Impact Statement (EIS). The EIS will contain the technical studies required by the SEARs and considers matters such as traffic, noise, operations, ecology, bushfire and construction management.

We will continue to refine the design for the upgrade and progress through the development approval process.



\*pending planning approvals

## Darcy Road Public School upgrade

For more information phone: 1300 482 651  
Email: [schoolinfrastructure@det.nsw.edu.au](mailto:schoolinfrastructure@det.nsw.edu.au)



# How we build and upgrade schools

In all our new schools or school upgrades when working on design, we must meet our Educational Facilities Standards and Guidelines (EFSG) for both indoor and outdoor education facilities. The guiding principles of the EFSG provide our vision for learning environments and are enriched by the needs and goals of the school and local community. These guidelines guarantee that all new schools and school upgrades align with the NSW Department of Education's vision and can deliver the Australian curriculum while allowing the school community to contribute ideas towards making the school their own.

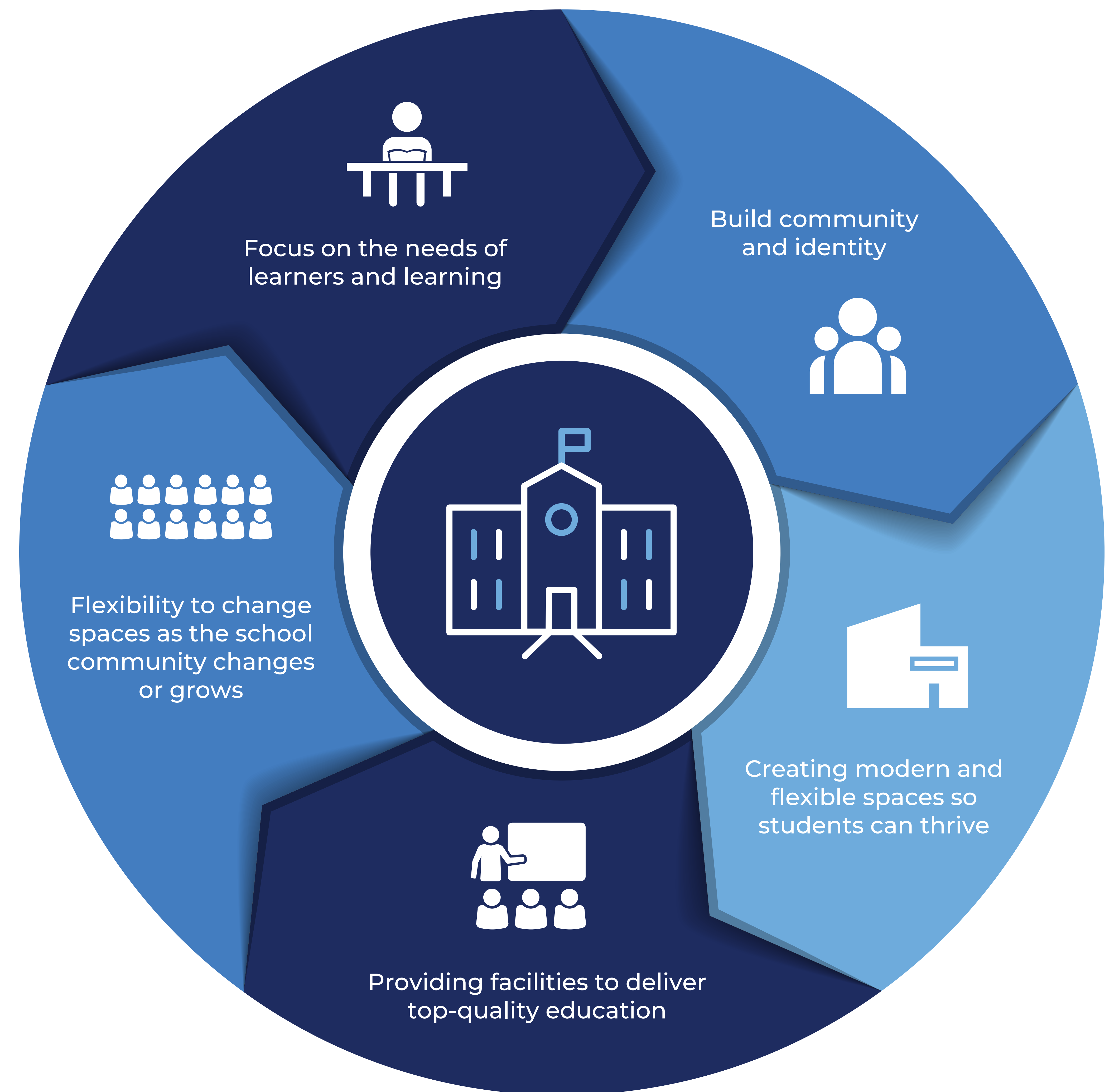
## Want to know more about how we build and upgrade schools?

We design and deliver schools to suit the individual needs of the local school community. We harness opportunities and solve challenges. As a result, no two schools are exactly the same.

What remains consistent is school infrastructure that empowers teachers to prepare students with the skills and capabilities they need to thrive in a rapidly changing and interconnected world.

Take a look at some of the upgrades we have delivered and see how these varied spaces support teaching and learning.

Visit [edu.nsw.link/SchoolShowcase](https://edu.nsw.link/SchoolShowcase) or scan the QR code.



## Darcy Road Public School upgrade

For more information phone: 1300 482 651  
Email: [schoolinfrastructure@det.nsw.edu.au](mailto:schoolinfrastructure@det.nsw.edu.au)