

An example of the new primary school facilities we are delivering across NSW

Darcy Road Public School

Project update

April 2022

Investing in our schools

The NSW Government is investing \$7.9 billion over the next four years, continuing its program to deliver 215 new and upgraded schools to support communities across NSW. This is the largest investment in public education infrastructure in the history of NSW.

The NSW Department of Education is committed to delivering new and upgraded schools for communities across NSW. The delivery of these important projects is essential to the future learning needs of our students and supports growth in the local economy.

Project overview

The NSW Government's 2021/22 Budget included funding for an upgrade to Darcy Road Public School, including additional permanent teaching spaces and core facilities to support the growing population in Western Sydney.

The upgrade will deliver new permanent learning spaces, new administration facilities, a new library, a new canteen, a refurbished hall and improvements to open spaces.

Progress summary

We are pleased to announce that the business case for the Darcy Road Public School upgrade has been approved by the NSW Government. The project now has approval to proceed.

Key consultants, including project managers and engineers, and architects from global architecture studio, Woods Bagot, have been appointed. Detailed site investigations, including traffic, heritage, and tree studies, are underway to inform master planning for the project.

Next steps

We will continue to develop the design of the new school facilities, considering educational, operational and service delivery requirements, in consultation with the Project Reference Group (PRG). The PRG includes architects, planners and design professionals, and school and department leadership representatives. The designs will be shared with the community for feedback. We will provide more information, including timeframes, as the project progresses.

How can I get involved?

We are committed to working together with our school communities and other stakeholders to deliver the best learning facilities for our students. Your feedback on this project is important to us. For more information or to make a comment please email us at schoolinfrastructure@det.nsw.edu.au.

For more information contact:

School Infrastructure NSW
Email: schoolinfrastructure@det.nsw.edu.au
Phone: 1300 482 651
www.schoolinfrastructure.nsw.gov.au

Darcy Road Public School upgrade

The business case for the Darcy Road Public School upgrade has been approved by the NSW Government. The information below takes you through the journey of upgrading or building a new school.

Early planning

- Consideration and studies of demographic trends, education requirements, the condition of the existing school buildings, catchment boundaries, heritage requirements, transport links and partnership opportunities.
- Doing so means that we:
 - consider the needs of the local area now and into the future.
 - ensure the right school is designed for the community.
- An important step before an architect or other contractors are appointed and official community engagement commences.

Planning

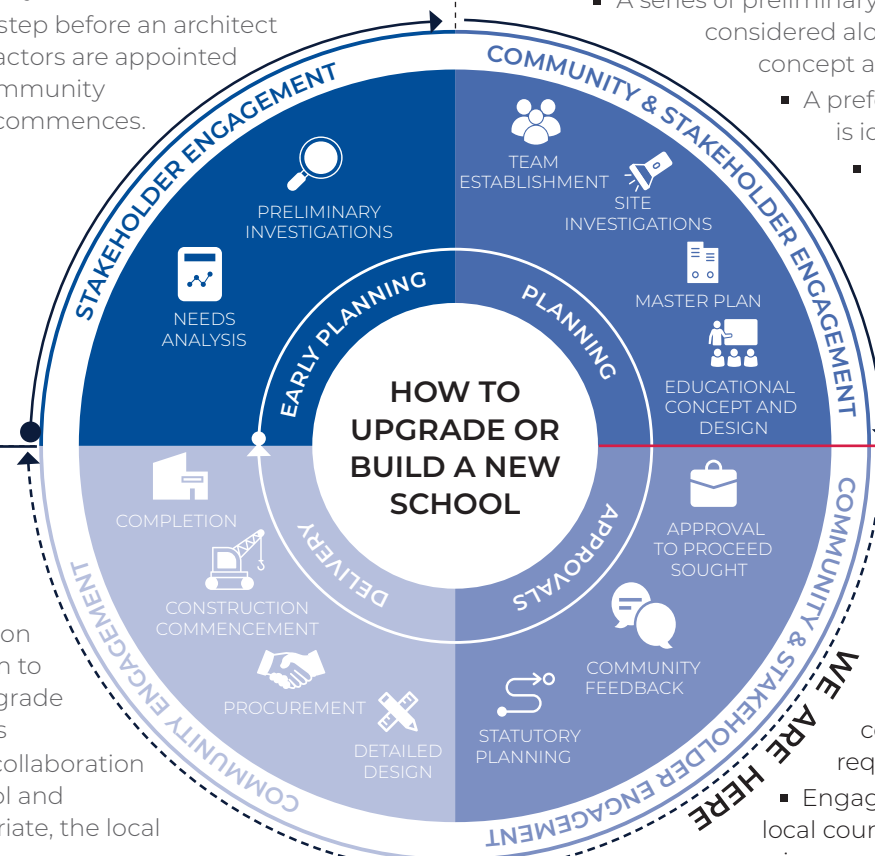
- Consultants such as architects and project managers are appointed.
- Investigation and review of site and development of master plan options.
- Master planning considers options for the general size, shape and form of buildings for a specific school site.
- A Project Reference Group (PRG) is established.
- Operational, educational and service delivery factors are understood and considered by the PRG.
 - A series of preliminary master plan options are considered along with the educational concept and design for the school.
 - A preferred concept design option is identified.
 - Once a preferred option is identified approval is needed in order to progress from planning through to project delivery.

Delivery

- The construction works program to deliver the upgrade to the school is developed in collaboration with the school and where appropriate, the local community.
- Ongoing consultation with Principal, staff and other school users.
- Throughout detailed design and construction updates are provided to the local community.

Approvals

- Workshops continue with school and local community to understand challenges and constraints and identify future requirements.
 - Engagement of technical specialists, local councils and other government agencies.
- Statutory planning approval process.
- Opportunity for local community to view and provide feedback upon submission of the Development Application.
- Scope of work and concept design is further defined.



For a **Translation and Interpreting Service**, call **131 450** and ask them to call the Department of Education - School Infrastructure NSW on **1300 482 651**.

For more information contact:

School Infrastructure NSW
 Email: schoolinfrastructure@det.nsw.edu.au
 Phone: 1300 482 651
www.schoolinfrastructure.nsw.gov.au

