

Welcome to Curl Curl North Public School information session

Today you will be given the opportunity to meet the project team, receive a project update and view the plans for the new school



Artist's impression of upgraded Curl Curl North Public School

Curl Curl North Public School Project upgrade

For more information Phone: 1300 482 651
Email: schoolinfrastructure@det.nsw.edu.au

Curl Curl North Public School upgrade

The Curl Curl North Public School project will be staged to allow the school to continue to operate during the upgrade. The project will provide:

Stage 1

- 40 new permanent teaching spaces
- A new library
- Upgrade to administration building

Stage 2

- A new hall
- Landscaping and an upgrade to external play areas

Stage 3

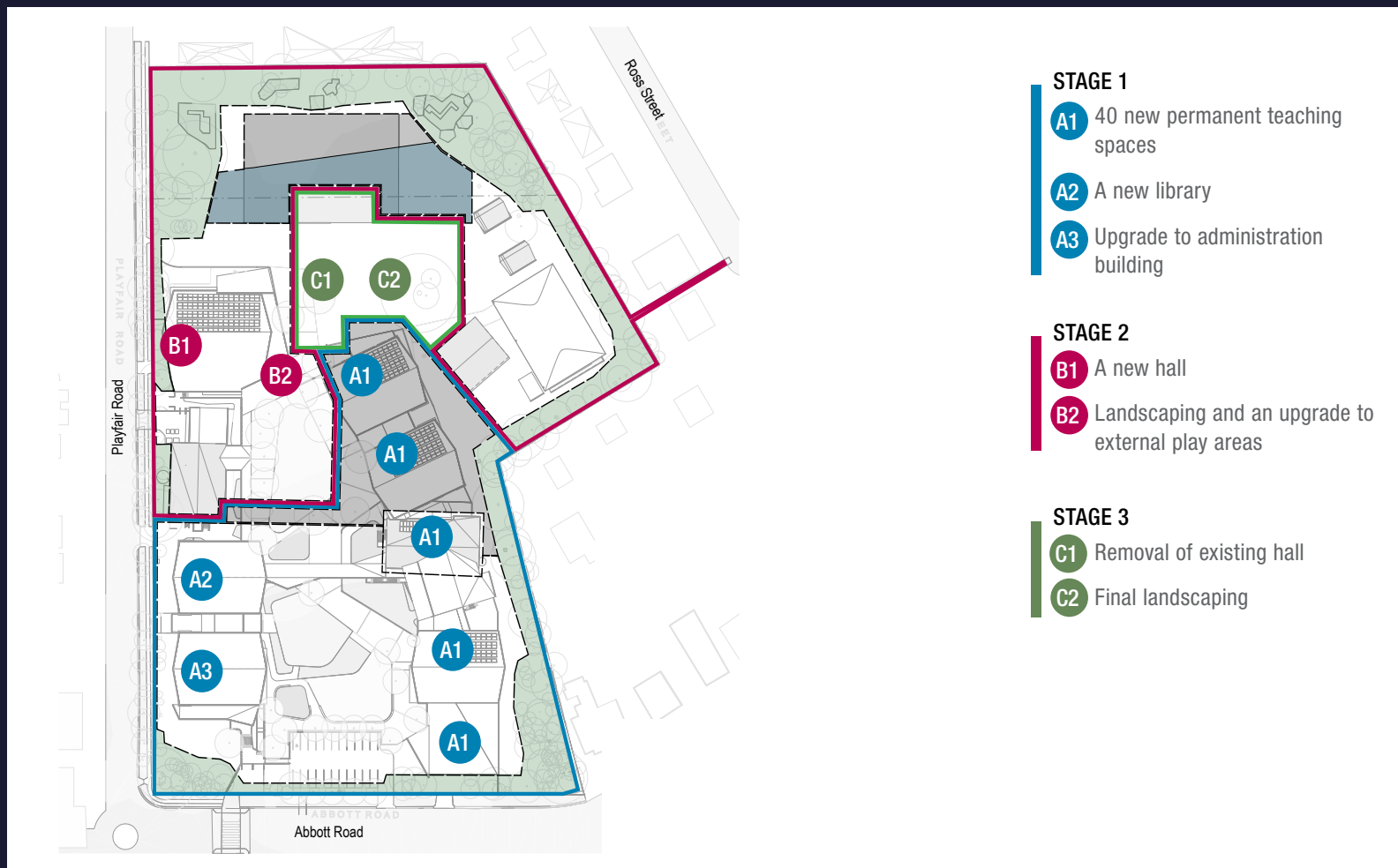
- Removal of existing hall
- Final landscaping

Stage 1 will be delivered for the start of Term 1, 2020 with construction of Stage 2 to commence after this.

Indicative timeline



Staged construction



Curl Curl North Public School Project upgrade

For more information Phone: 1300 482 651
Email: schoolinfrastructure@det.nsw.edu.au

Playspace



Curl Curl North Public School Project upgrade

For more information Phone: 1300 482 651
Email: schoolinfrastructure@det.nsw.edu.au

What are innovative learning spaces?

Our kids' education means everything to us – they are the next leaders, the future workforce and the foundation of communities for generations to come.

Our next leaders and future workforce will:

- Be collaborative and entrepreneurial
- Flexible, critical thinkers and problem solvers
- Have multiple employers and career paths

Innovative learning spaces allow flexible, technology-rich teaching spaces for one-to-one, small groups and lecture style teaching.

Innovative learning prepares students across all curriculum areas and learning stages with skills and capabilities to thrive in a rapidly changing and interconnected world. It connects students and engages their sense of curiosity.



Example of innovative learning environment designed for Harbord Public School



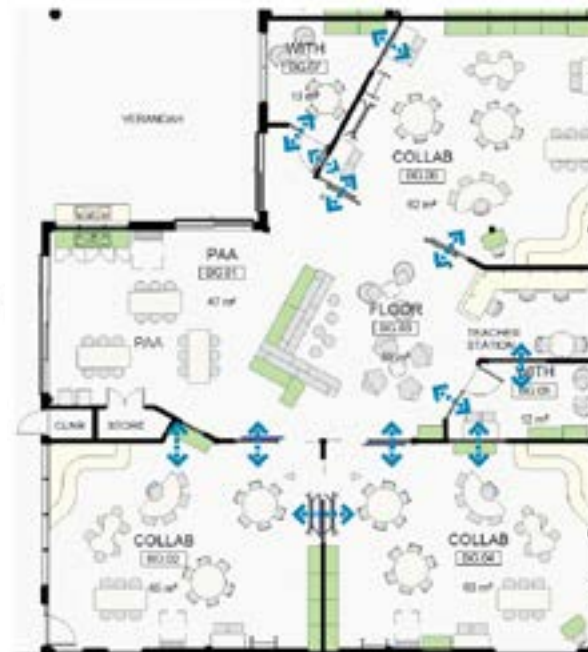
Example of an innovative learning environment

New build layouts

Classroom layouts



Storage area



Storage area



Curl Curl North Public School Project upgrade

For more information Phone: 1300 482 651
Email: schoolinfrastructure@det.nsw.edu.au

New build layouts

New library layout



Storage area



New hall layout



Storage area



Curl Curl North Public School Project upgrade

For more information Phone: 1300 482 651
Email: schoolinfrastructure@det.nsw.edu.au

Keeping you updated

We will continue to keep the school and local community informed throughout construction. This will include information booths, project updates, school newsletters and website updates.

Please let us know if you have any questions or feedback by:

- Speaking with the project team here today
- Fill out a feedback form with any comments, questions or suggestions about the construction of the school.

Contact us:



schoolinfrastructure@det.nsw.edu.au



www.schoolinfrastructure.nsw.gov.au



1300 482 651



Artist's impression of aerial view of upgraded Curl Curl North Public School

Curl Curl North Public School Project upgrade

For more information Phone: 1300 482 651
Email: schoolinfrastructure@det.nsw.edu.au