

Rebuilding Condong Public School

Information Pack – September 2024



Artist's impression – Condong Public School buildings on McLeod Street

We're rebuilding Condong Public School after it was extensively damaged by floods in 2022.

The rebuilt school will be more flood resilient, with all modern facilities on a single raised level that will be connected by an undercover walkway and accessed by lifts and stairs.

The new school will deliver:



Modern purpose built classrooms



A new library



Canteen



Administration area



Undercover play space and playground



Landscaping that is Connected to Country

Planning processes

We expect Condong Public School to be completed in 2025. Construction times will depend on weather and planning approvals.

For more information

Phone: 1300 482 651

Email: schoolinfrastructure@det.nsw.edu.au

Website: schoolinfrastructure.nsw.gov.au





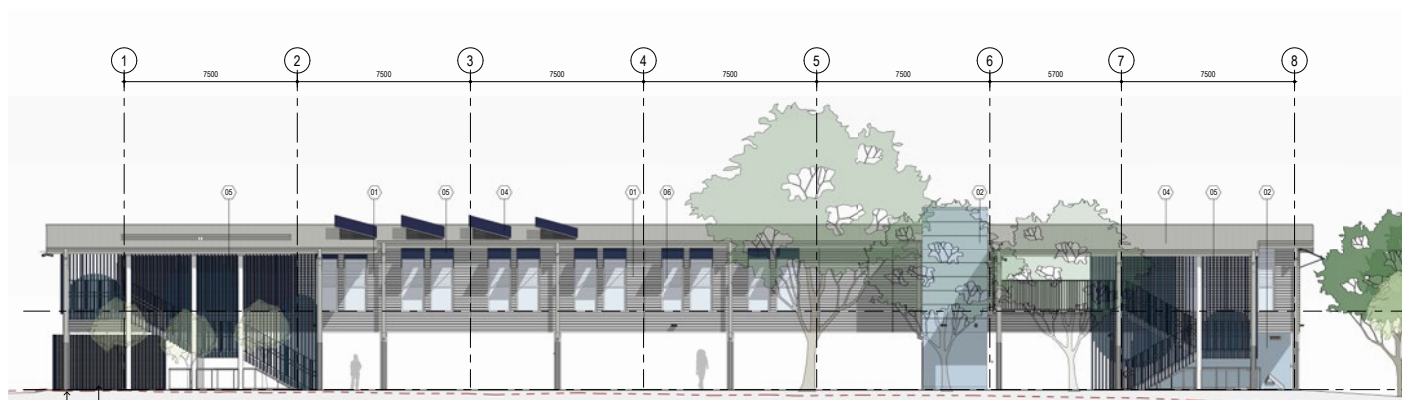
Artist's impression – the blue of the vertical batons mirrors the school logo and uniforms

Flood resilient design that respects Condong's heritage

The raised school design is sympathetic to the Condong village streetscape and reflects the school's heritage, with cladding that mirrors the weatherboard and awnings of surrounding homes and local architecture.

The flood resilient school design will allow Condong Public School students to return to their own school sooner in the event of any future flooding in the village or on the school site.

- All buildings will be raised about 3.4 metres above the ground. This is about 2.5 metres higher than the 2022 floods.
- Buildings will be supported by steel pylons and an engineered steel gantry that is rated to the Probable Maximum Flood (PMF) level.
- All core facilities, including classrooms, library and canteen will be on the first floor. The amenities and ground floor facilities will be made of flood resilient materials to ensure durability and longevity if they are flooded in the future.

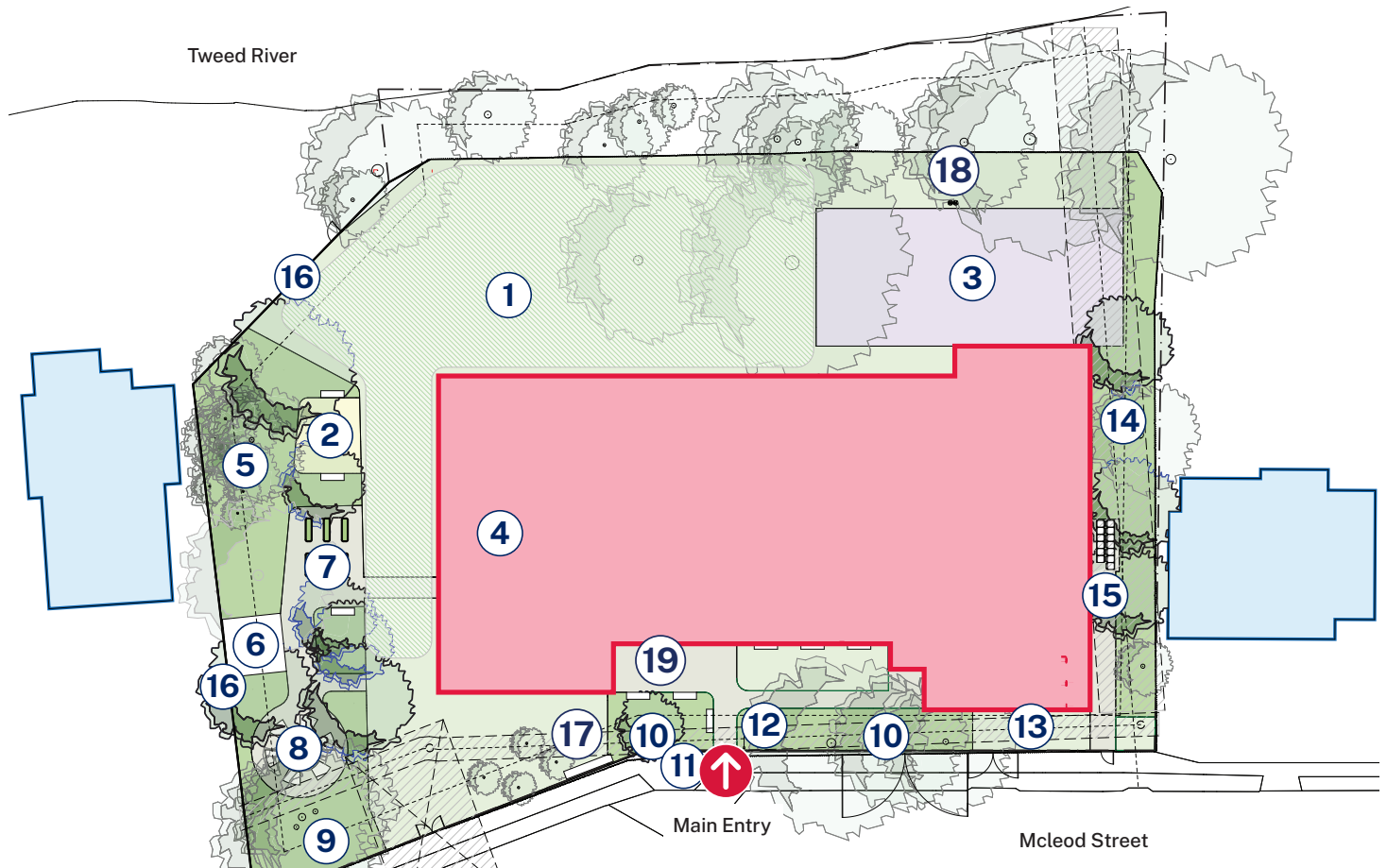


Artist's impression of the undercroft, view from McLeod Street

Modern school facilities - site plan

The layout of the new Condong Public School facilities maximises the play space and usable area of the school site by bringing school buildings forward towards McLeod Street. The building placement is also influenced by significant trees and easements.

We have looked closely at the viability of retaining the original Condong school building, however retaining the existing school building would restrict placement of the new school buildings and limit use of the school site for play. Repurposing or raising the existing school building would also require extensive modifications to meet modern building codes and standards for school facilities and would take longer.



Legend

- | | | |
|---------------------------------|---|---|
| Existing Building | 6 GA Shed Retained | 13 Relocated Ross Elder Memorial Garden |
| Proposed Building | 7 New Growing Gardens | 14 Buffer Planting |
| 1 Open Play Space | 8 Yarning Circle | 15 Waste Area |
| 2 Proposed Replacement Sand Pit | 9 Relocated Marcia's Place and Bushtucker Reconciliation Garden | 16 Acoustic Screen |
| 3 Play Equipment Area | 10 Entry Planting | 17 Fire Hydrant Brigade Booster Assembly and External Hydrant |
| 4 Mosaic Bubbler Relocated | 11 Water Meter/ Backflow Assembly | 18 Fire Hydrant |
| 5 Shaded Seating Area | 12 Relocated Digital Sign | 19 Seated Waiting Area |



Next steps



1. Design

We will work with the school through the Project Reference Group (PRG) to finalise internal school, finishes, furniture and landscaping.

Connecting with Country consultation will also be held with the local community and Tweed Wollumbin Aboriginal Education Consultative Group (AECG) to ensure that the school design and daily school operations reflect the cultural heritage of the Condong Public School site and local area.



2. Planning

Once schematic designs and colour schemes are finalised, we will lodge a planning application to rebuild the school. Our planning application will be placed on public exhibition.



3. Construction

The first-floor buildings and steel gantry will be manufactured off site and reassembled at Condong. This means we will be able to rebuild to a very high standard and more efficiently. Once we have planning approvals in place, we expect construction to take 6-7 months, weather permitting.

Contact us



You can find more information about the project by scanning the QR code.

If you have any questions about this project, you can contact School Infrastructure NSW during business hours on the contact details below.

For more information about this project, contact School Infrastructure NSW:

Website: schoolinfrastructure.nsw.gov.au

Email: schoolinfrastructure@det.nsw.edu.au

Phone: 1300 482 651