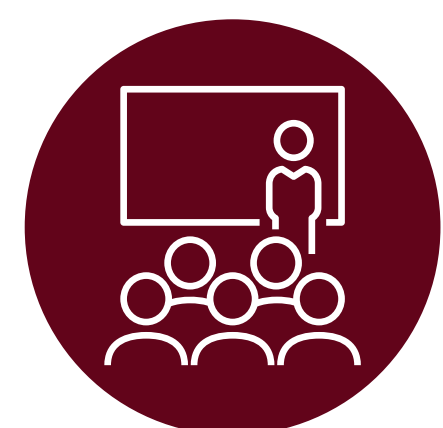


We're rebuilding Condong Public School

We're rebuilding Condong Public School after it was extensively damaged by floods in 2022.

The rebuilt school will be more flood resilient, with all modern facilities on a single raised level that will be connected by an undercover walkway and accessed by lifts and stairs.

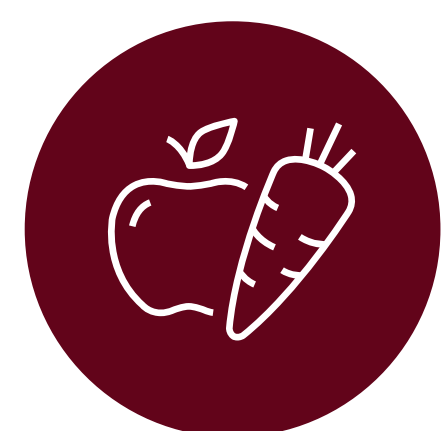
The new school will deliver:



Modern flexible classrooms



A new library



Canteen and administration spaces



New landscaping and undercover play area that are connected to Country



Aerial view Condong Public School (artist's impressions)

Condong Public School

For more information

Phone: 1300 482 651

Email: schoolinfrastructure@det.nsw.edu.au

Website: schoolinfrastructure.nsw.gov.au



A modern school that reflects its heritage

The raised school design is sympathetic to the Condong village streetscape and reflects the school's heritage, with cladding that mirrors the weatherboard and awnings of surrounding homes and local architecture.

The new flood resilient school design will allow Condong Public School students to return to their own school sooner in the event of any future flooding in the village or on the school site.

- All buildings will be raised about 3.4 metres above the ground. This is about 2.6 metres higher than the 2022 floods.
- Buildings will be supported by steel pylons and an engineered steel gantry that is rated to the Probable Maximum Flood (PMF) level.

As well as improving flood resilience, raising and consolidating the school spaces will allow for visual connection to the Tweed River from McLeod Street and a more functional school for students and staff.



Artist's impression – the blue of the vertical batons mirrors the school logo and uniforms



Artist's impression – new school buildings facing the Tweed River

Condong Public School

For more information

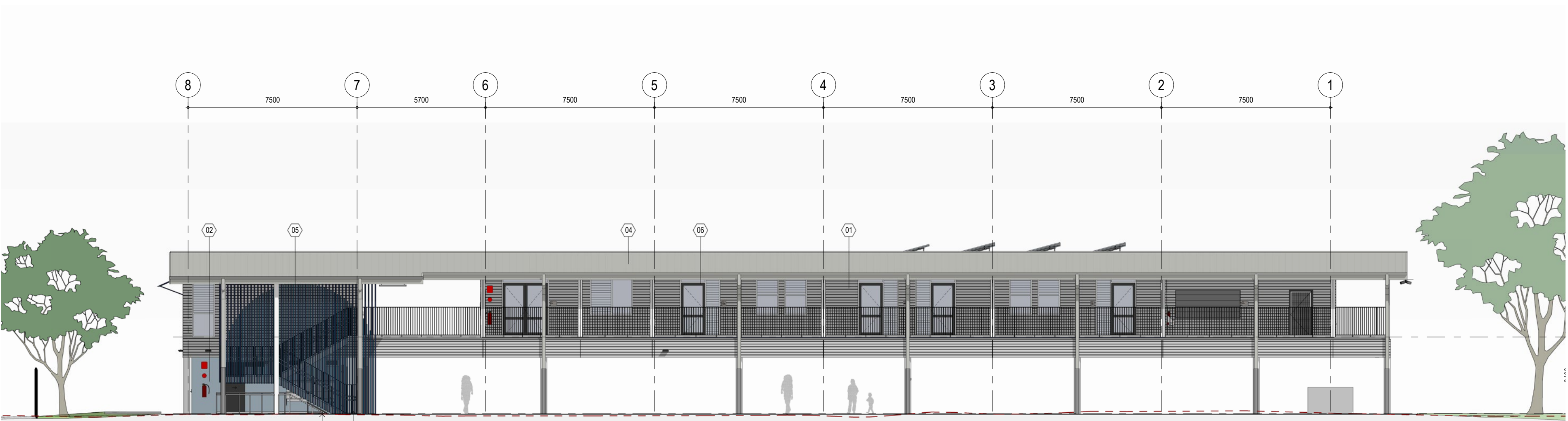
Phone: 1300 482 651

Email: schoolinfrastructure@det.nsw.edu.au

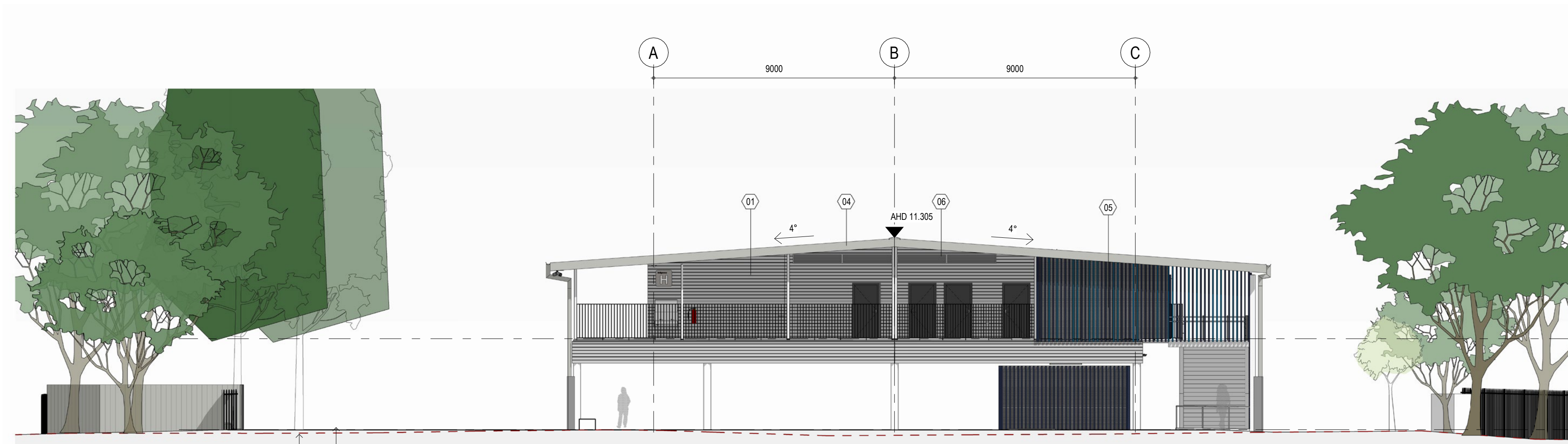
Website: schoolinfrastructure.nsw.gov.au



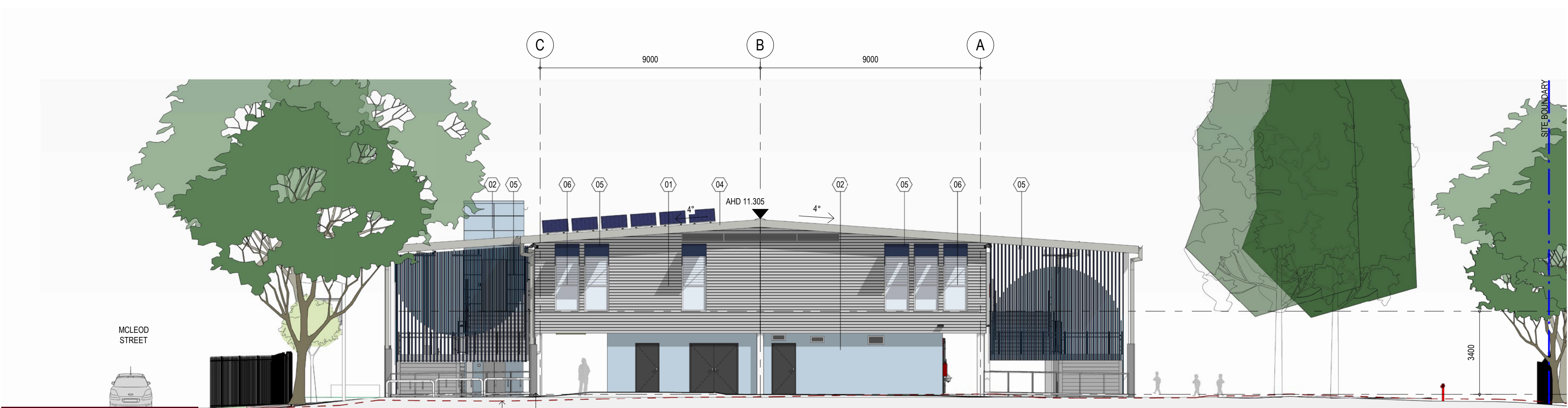
Flood resilient school design



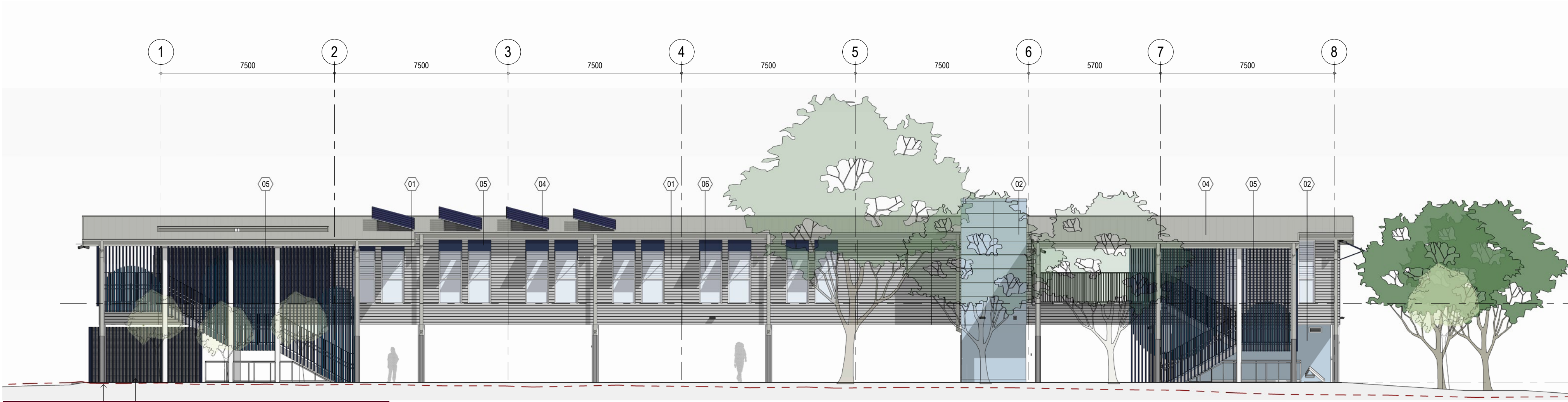
Elevation facing the Tweed River



Side elevation



Side elevation



Elevation facing McLeod Street

Condong Public School

For more information
Phone: 1300 482 651
Email: schoolinfrastructure@det.nsw.edu.au
Website: schoolinfrastructure.nsw.gov.au



Site plan

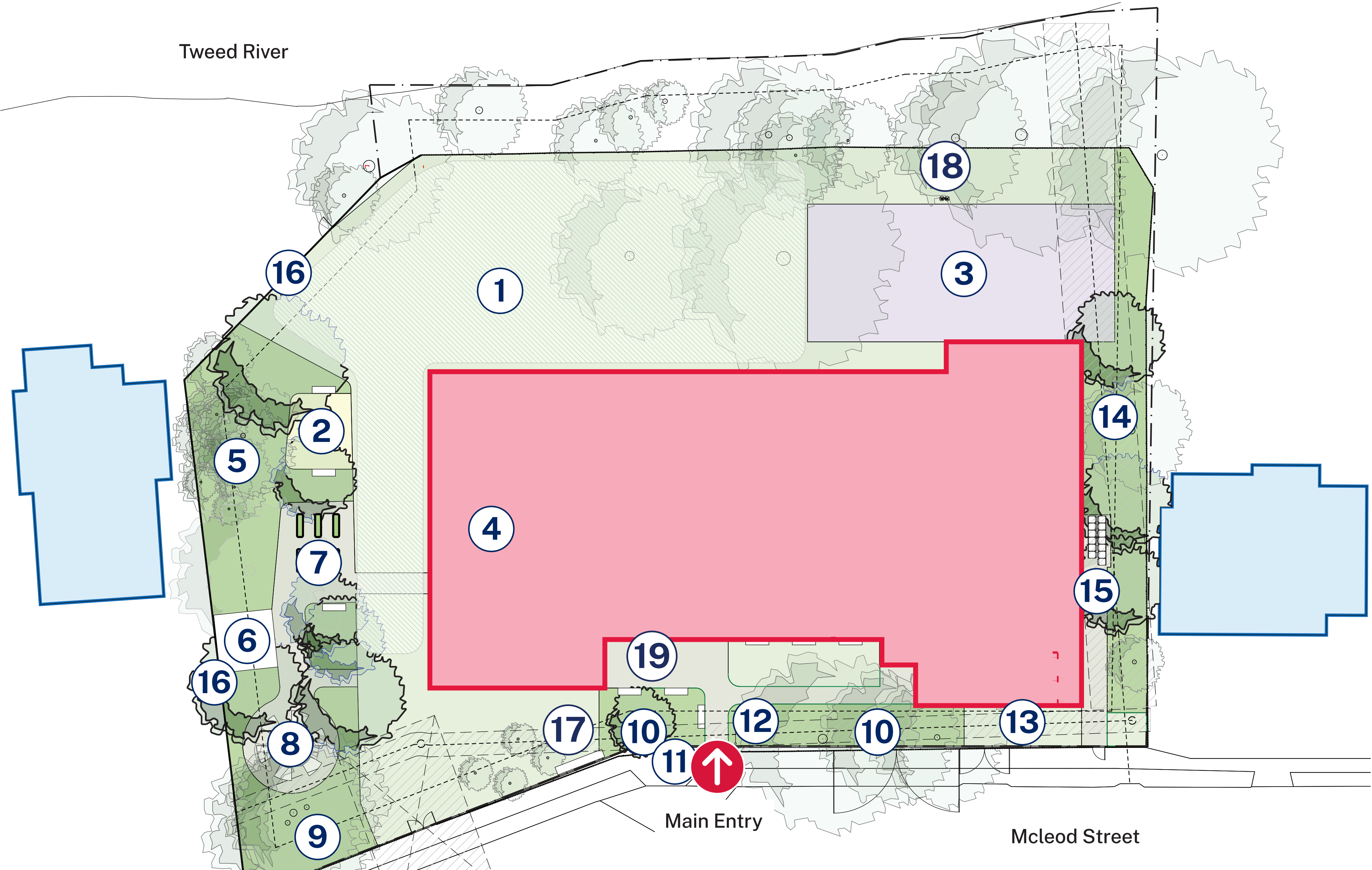
The layout of the new Condong Public School facilities maximises the play space and usable area of the school site by bringing school buildings forward towards McLeod Street.

The building placement is also influenced by significant trees and easements.


The classrooms, library, administration area and canteen will be on a single raised level connected by an undercover walkway and accessed by a lift and stairs.

The ground flood level will include the undercroft, as well as toilets and storage.


We are working with the school to ensure that important school features, such as the mosaic bubbler, and memorial plaques and,are kept as part of the school story.



Legend



Existing Building



Proposed Building

1

Open Play Space

2

Proposed Replacement Sand Pit

3

Play Equipment Area

4

Mosaic Bubbler Relocated

5

Shaded Seating Area

6

GA Shed Retained

7

New Growing Gardens

8

Yarning Circle

9

Relocated Marcia's Place and Bushtucker Reconciliation Garden

10

Entry Planting

11

Water Meter/ Backflow Assembly

12

Relocated Digital Sign

13

Relocated Ross Elder Memorial Garden

14

Buffer Planting

15

Waste Area

16

Acoustic Screen

17

Fire Hydrant Brigade Booster Assembly and External Hydrant

18

Fire Hydrant

19

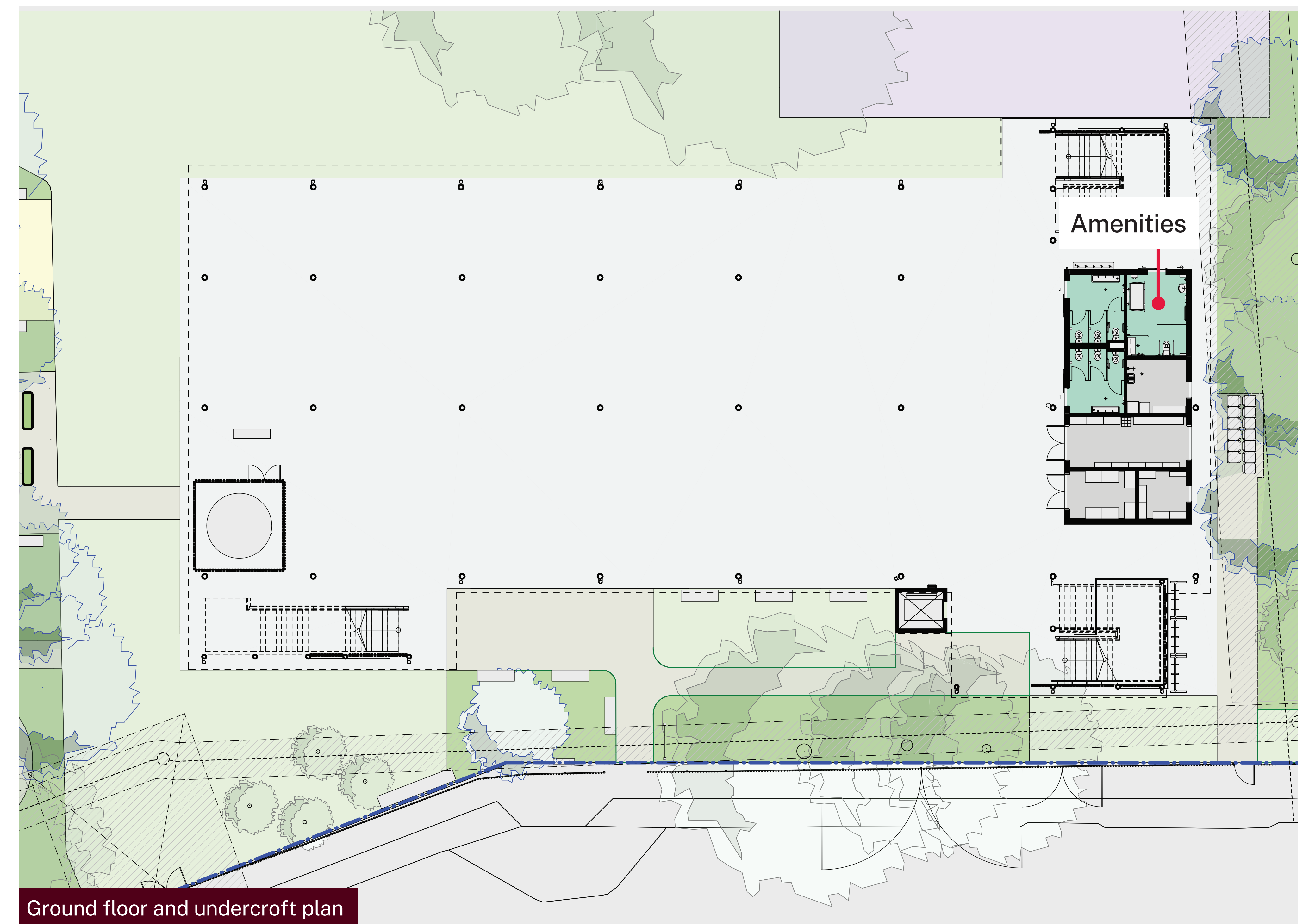
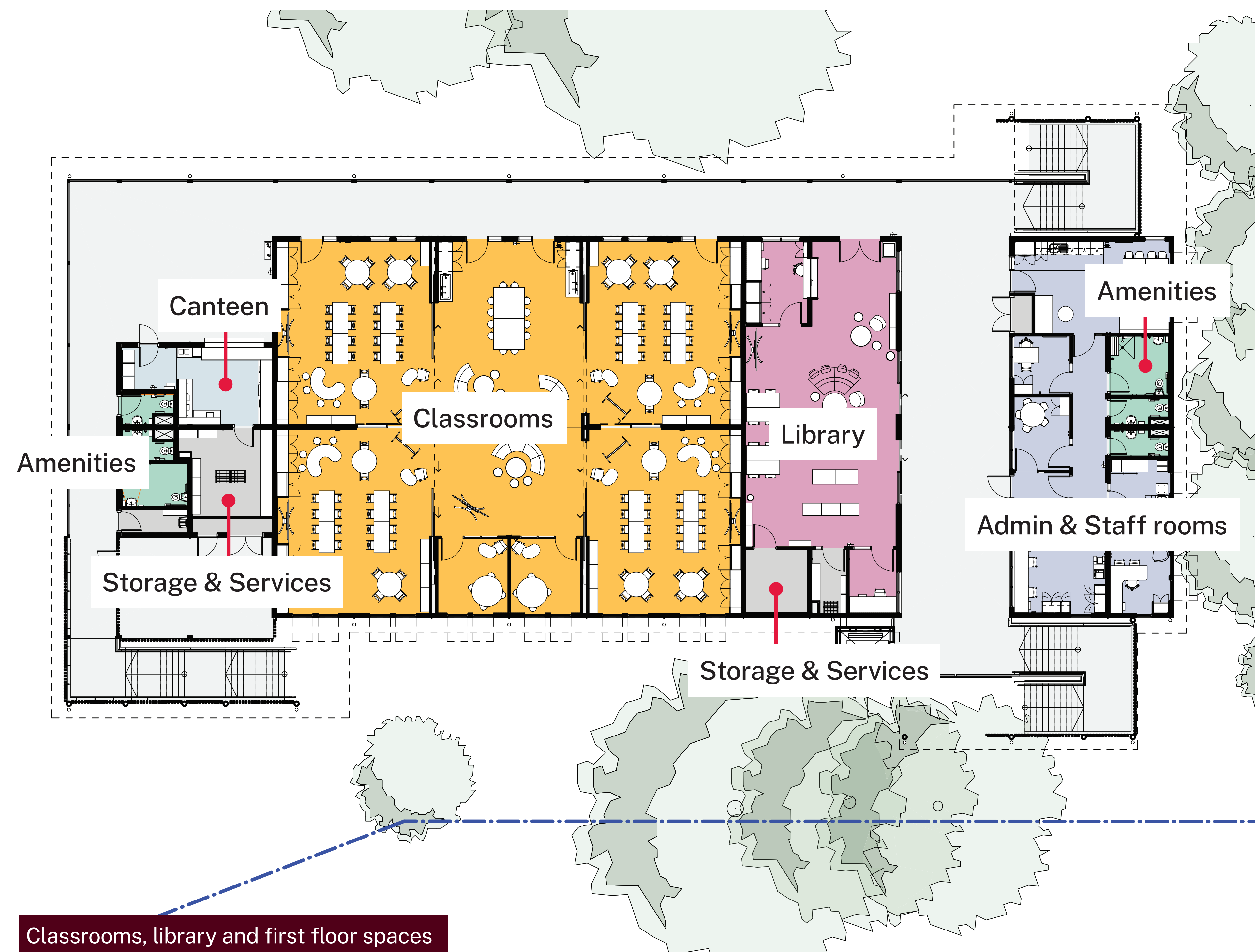
Seated Waiting Area

Condong Public School

For more information
Phone: 1300 482 651
Email: schoolinfrastructure@det.nsw.edu.au
Website: schoolinfrastructure.nsw.gov.au



Modern school facilities



Condong Public School

For more information

Phone: 1300 482 651

Email: schoolinfrastructure@det.nsw.edu.au

Website: schoolinfrastructure.nsw.gov.au

McLeod Street



Condong Public School

For more information

Phone: 1300 482 651

Email: schoolinfrastructure@det.nsw.edu.au

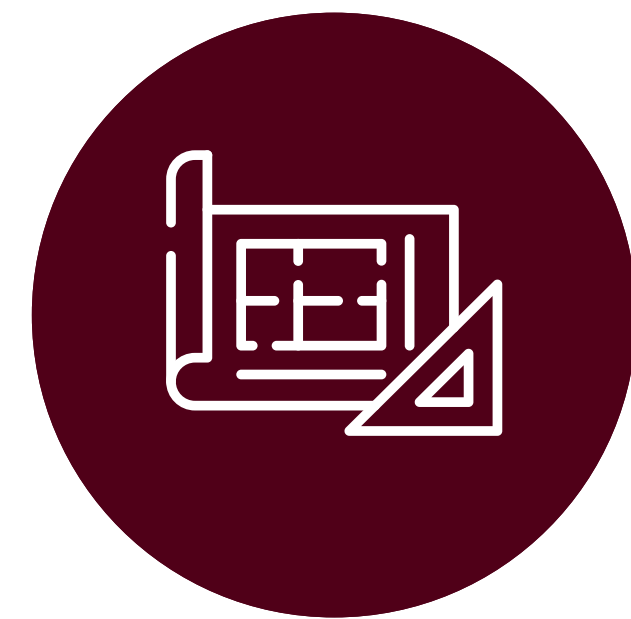
Website: schoolinfrastructure.nsw.gov.au

Next steps

1. Design

We will work with the school through the Project Reference Group (PRG) to finalise internal school, finishes and landscaping.

Connecting with Country consultation will also be held with the local community and Tweed Wollumbin Aboriginal Education Consultative Group (AECG) to ensure that the school design and daily school operations reflect the cultural heritage of the Condong Public School site and local area.



2. Planning

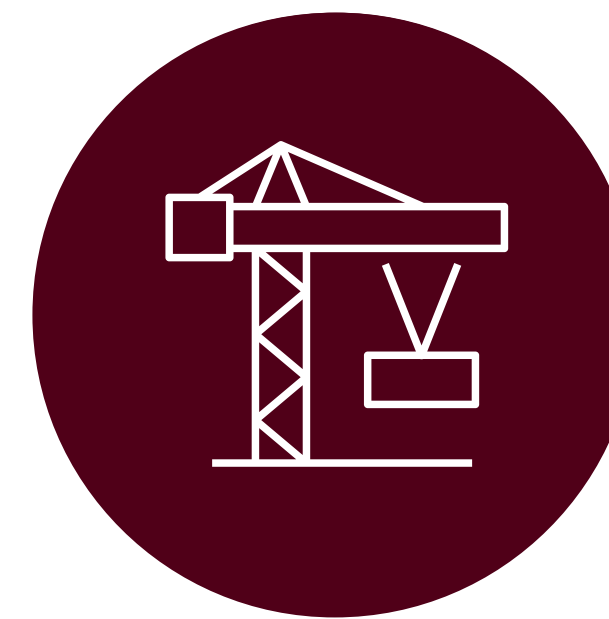
Once schematic designs and colour schemes are finalised, we will lodge a planning application to rebuild the school.

Our planning application will be placed on public exhibition for the required length of time.



3. Construction

The first-floor buildings and steel gantry will be built off site. This means we will be able to rebuild to a very high standard and more efficiently. Once we have planning approvals in place, we expect construction to take 6-7 months, weather permitting.



Stay Informed

For more information about this project, contact School Infrastructure NSW:

Phone: 1300 482 651

Email: schoolinfrastructure@det.nsw.edu.au

Website: schoolinfrastructure.nsw.gov.au



Condong Public School

For more information

Phone: 1300 482 651

Email: schoolinfrastructure@det.nsw.edu.au

Website: schoolinfrastructure.nsw.gov.au

