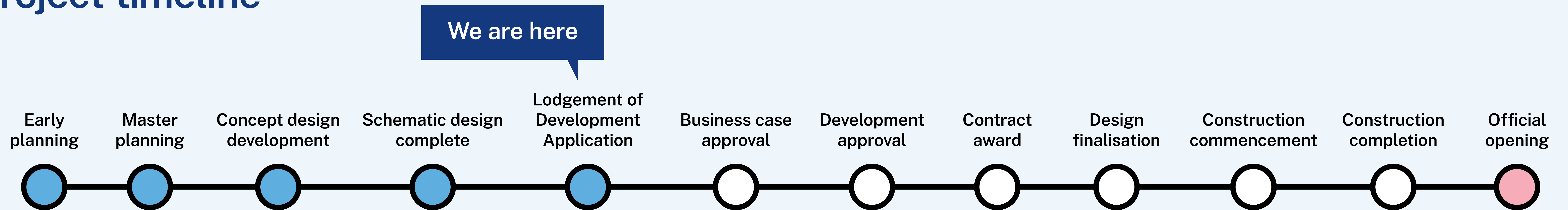


# Project overview

The NSW Government is investing in public education infrastructure, with an upgrade to Concord High School in planning. School Infrastructure NSW has undertaken a needs analysis and considered demographic trends for Concord to ensure the right project is delivered for the community.

The project is expected to deliver additional contemporary specialist, general learning spaces and core facilities including new front facing administration facilities. Refurbishment of existing facilities and spaces will also be undertaken. Temporary classrooms will be removed and open space will be maximised with the completion of the project.

## Project timeline



## What's next?

A Development Application for the upgrade has been lodged with City of Canada Bay and is now on public exhibition, ending Thursday 3 August. The community or interested stakeholders now have the opportunity to provide feedback to Council directly. When the exhibition period concludes, council will review the Development Application and all community input and issue approval once they are satisfied with the application.

After the approval of the Business Case (by NSW Treasury) and the Development Application, a contractor will be appointed and design will be finalised. The contractor will work with School Infrastructure to determine a timeline for the completion of the work and any staging requirements to ensure the impacts to the school community are minimised where possible. We look forward to sharing more information with you as the project progresses. In the meantime you can stay informed by regularly visiting the project web page and you can contact us via email or phone if you have any questions or feedback about the Concord High School Upgrade.

## Concord High School upgrade

For more information phone: 1300 482 651  
Email: [schoolinfrastructure@det.nsw.edu.au](mailto:schoolinfrastructure@det.nsw.edu.au)  
[schoolinfrastructure.nsw.gov.au](http://schoolinfrastructure.nsw.gov.au)

# New learning clusters and contemporary classrooms

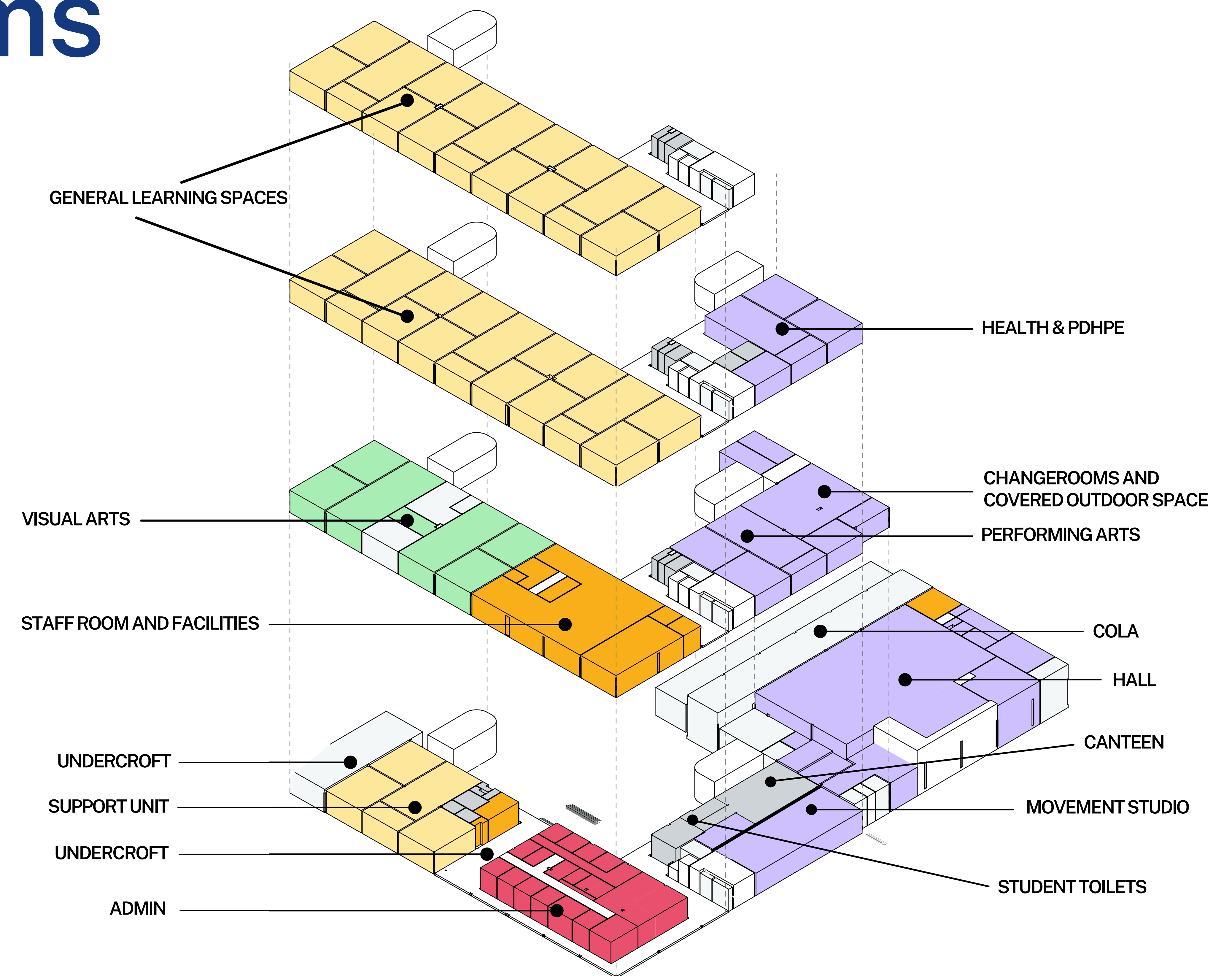
The upgraded Concord High School includes 42 new permanent teaching spaces across three new buildings and features 7 specialist learning spaces for visual arts, performing arts and PDHPE, 3 Support Learning units, new front facing administration and staff facilities, and a new school hall.

To make way for the new buildings, the current school hall and canteen (Block E) and sports courts will be removed. The new buildings are adjacent to Stanley Street for better access, security, and opportunities for future community use.

The layout features new learning clusters of specialist and general learning spaces as per the new Educational Facilities Standards & Guidelines (EFSG) being rolled out by School Infrastructure NSW across all new and upgraded schools.

Once the construction of the new buildings are complete, temporary demountable classrooms will be removed from site, the areas will be landscaped and new sports courts will be provided.

Temporary arrangements for the canteen will be made during construction.



*\*These plans are subject to amendment during the planning and approval process.*

## Concord High School upgrade

For more information phone: 1300 482 651  
Email: [schoolinfrastructure@det.nsw.edu.au](mailto:schoolinfrastructure@det.nsw.edu.au)  
[schoolinfrastructure.nsw.gov.au](http://schoolinfrastructure.nsw.gov.au)

# Complementary design

The Façade of the new buildings at Concord High School have been designed to be modern and visually appealing while complementing the existing school facilities and colour scheme.

Consideration for the existing Concord High School facilities and their materiality has influenced the material selection of the proposed Block X, Y and Z, with the aim of creating a sense of continuity between buildings

The images here are artist's impressions only. Final colour and landscaping is subject to change through final design stages and landscaping.



Artist impression view from Stanley Street

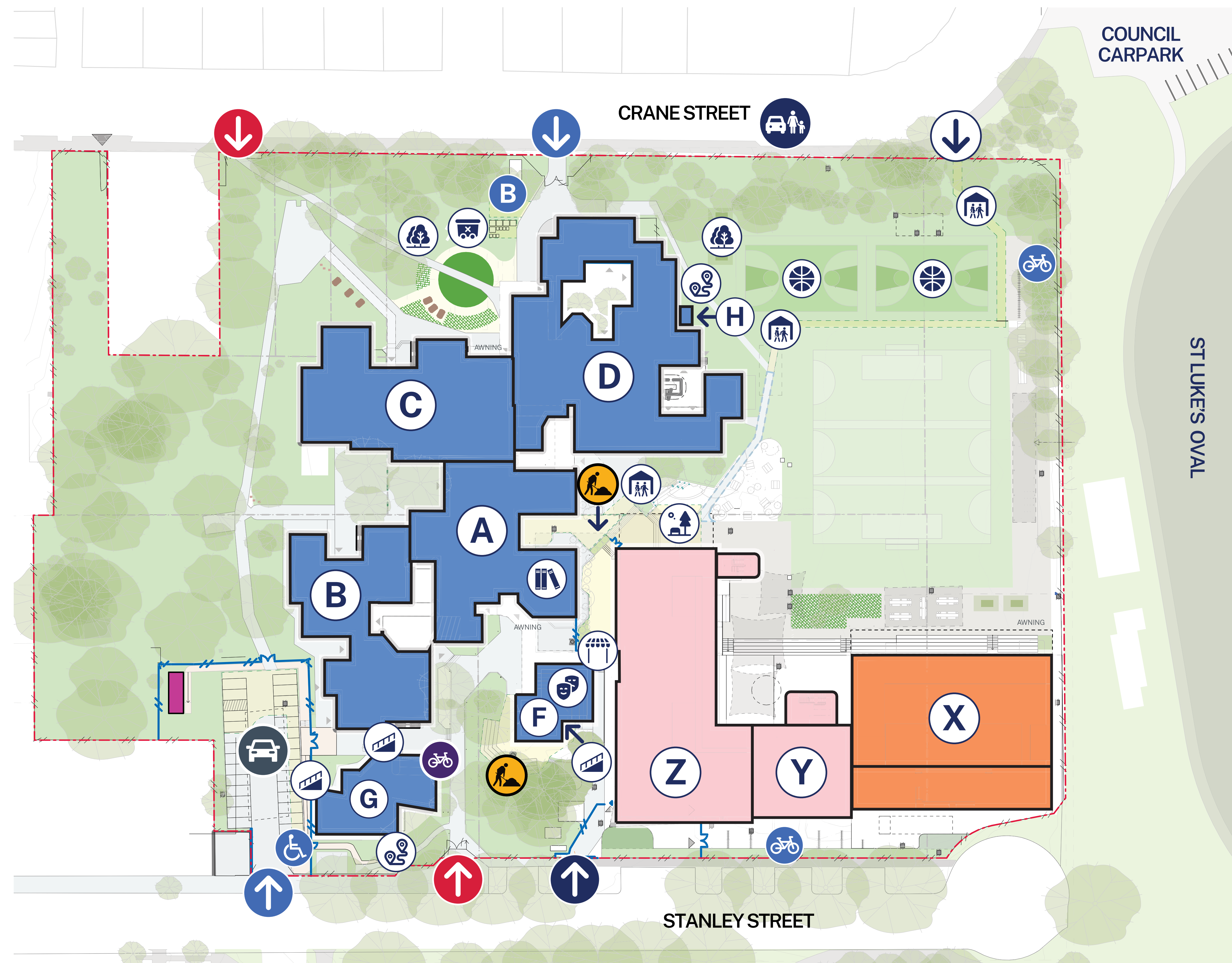


Artist impression view from oval/courtyard

## Concord High School upgrade

For more information phone: 1300 482 651  
Email: [schoolinfrastructure@det.nsw.edu.au](mailto:schoolinfrastructure@det.nsw.edu.au)  
[schoolinfrastructure.nsw.gov.au](http://schoolinfrastructure.nsw.gov.au)

# Proposed upgrades



LEGEND	
	Existing buildings
	New multi-purpose hall
	New administration, staff facilities, specialist spaces and general learning spaces
	Proposed new location for uniform shop
	Security fence
	Boundary
	Existing entry
	New main entry
	Vehicle Entrance
	Re-activate existing gate
	School owned bus parking
	Extend existing carpark to 29 spaces
	Installation of traffic calming measures for kiss and ride
	New accessible car space
	Staff bicycle parks and lockers
	Student bicycle and scooter parking
	Resurface existing paving/concrete
	Waste storage area
	Proposed landscape works
	New walkway
	New covered walkway
	Relocation of library admin to existing admin
	New ramp and/or balustrade
	Refurbishment of theatrette
	New awning extension to connect with existing awning
	Existing landscape works to be rebuilt
	Outdoor games courts

*\*This map shows an overview of the upgrade works. See detailed designs for more information. Note: final design and landscaping subject to approval and next stages of design.*

## Concord High School upgrade

For more information phone: 1300 482 651  
 Email: [schoolinfrastructure@det.nsw.edu.au](mailto:schoolinfrastructure@det.nsw.edu.au)  
[schoolinfrastructure.nsw.gov.au](http://schoolinfrastructure.nsw.gov.au)

# A new multi-purpose hall

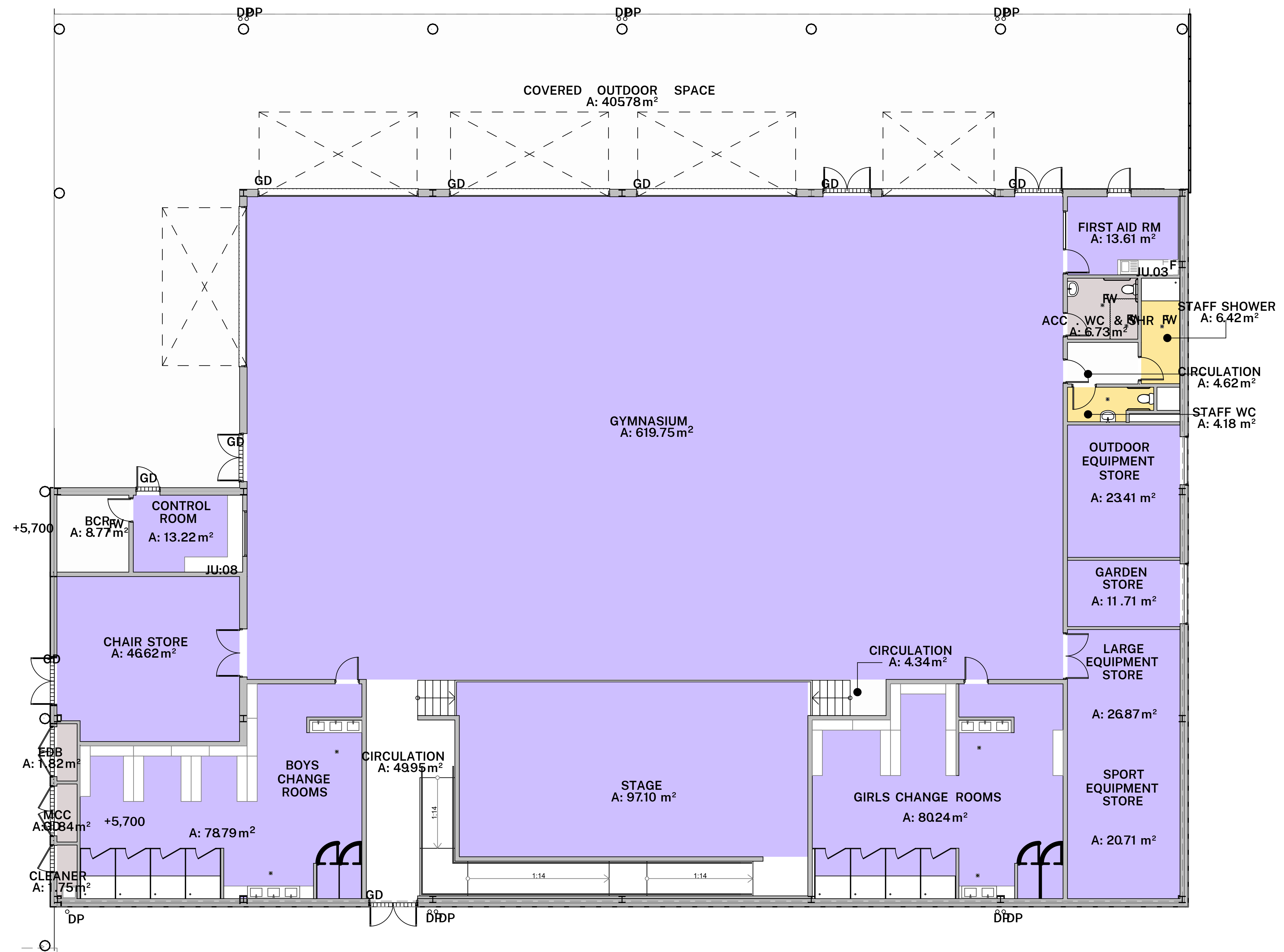
The layout of the new **Block X** multi-purpose hall is designed to maximise the use of space for the school and wider community.

The doors to the hall are designed to fold up to allow for overflow into the covered outdoor space for large school gatherings or performances.

The hall is expected to fit approximately 950 people.

Backstage access from the changerooms is provided to allow smooth movement of students in performing arts and easy changing access for PDHPE.

Storage and staff facilities are also included in the plans.



*\*These plans are subject to amendment during the planning and approval process.*

## Concord High School upgrade

For more information phone: 1300 482 651  
Email: [schoolinfrastructure@det.nsw.edu.au](mailto:schoolinfrastructure@det.nsw.edu.au)  
[schoolinfrastructure.nsw.gov.au](http://schoolinfrastructure.nsw.gov.au)

# Specialist Learning Spaces and support unit

**Block Y** (three storeys) includes the canteen, student restrooms, general learning spaces plus specialist spaces for performing arts and PDHPE including movement studio and fitness laboratory. These facilities are located close to the hall to allow for easy access to backstage and changerooms for performance or sport.

**Block Z** (four storeys) includes new staff and admin facilities, specialist spaces for visual arts and general learning spaces. The ground floor also contains a new support learning unit including sensory garden, accessible bathroom and changing facilities.



Note: The floorplan of the second and third floors of Block Z are the same, with stairs ending on the third floor.

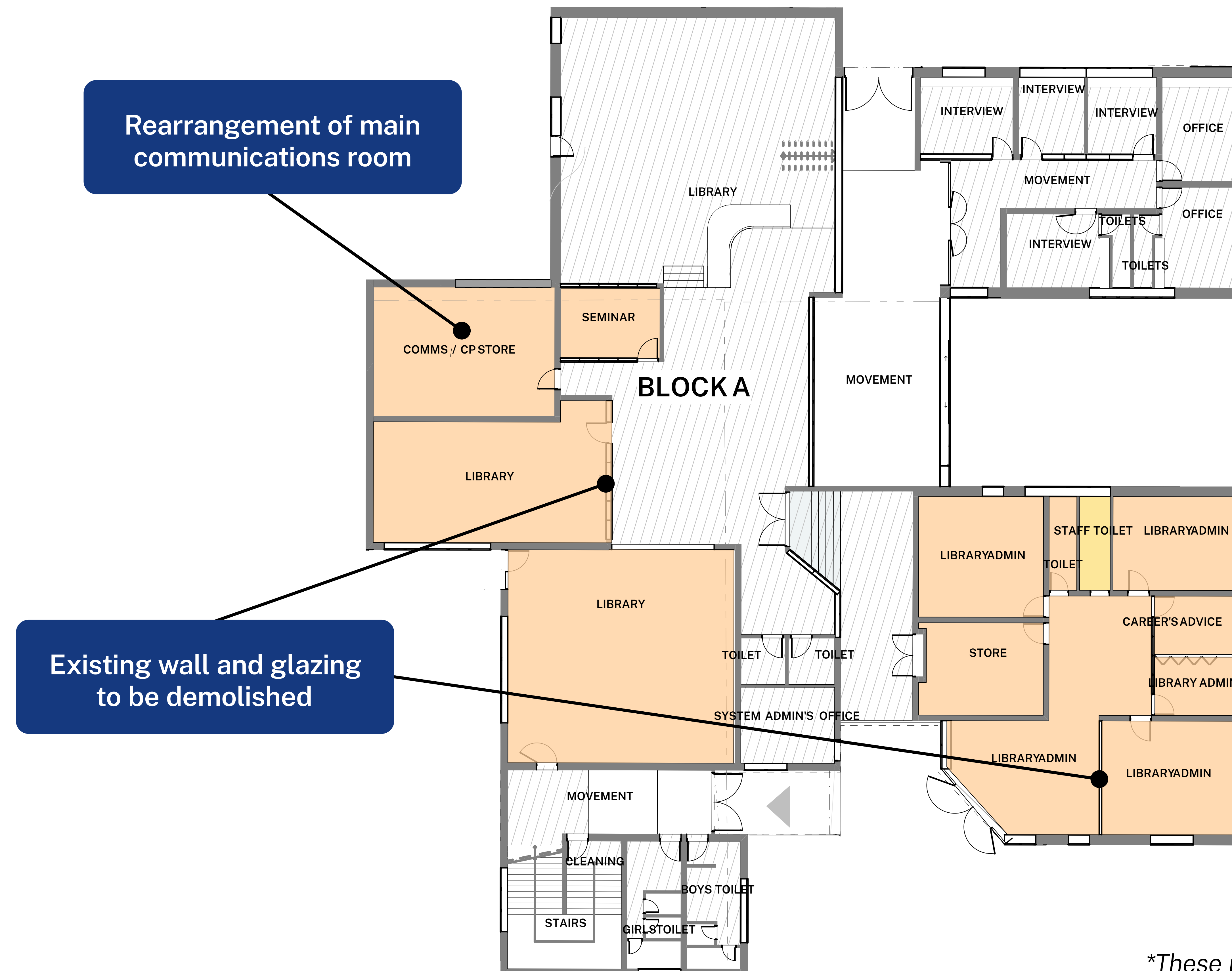
## Concord High School upgrade

For more information phone: 1300 482 651  
 Email: [schoolinfrastructure@det.nsw.edu.au](mailto:schoolinfrastructure@det.nsw.edu.au)  
[schoolinfrastructure.nsw.gov.au](http://schoolinfrastructure.nsw.gov.au)

# Maximising the library space

The proposed upgrade anticipates better use of the library space for students and staff moving into the future.

Relocation of the admin facilities to the new Block Z will allow for the current library administration facilities to move into the existing administration, freeing up more space inside the library for students and programs. This includes the demolition of existing walls and glazing and rearrangement of the library communications room to allow for better movement between the spaces.



*\*These plans are subject to amendment during the planning approval process.*

## Concord High School upgrade

For more information phone: 1300 482 651  
Email: [schoolinfrastructure@det.nsw.edu.au](mailto:schoolinfrastructure@det.nsw.edu.au)  
[schoolinfrastructure.nsw.gov.au](http://schoolinfrastructure.nsw.gov.au)

# Refurbishing the existing spaces

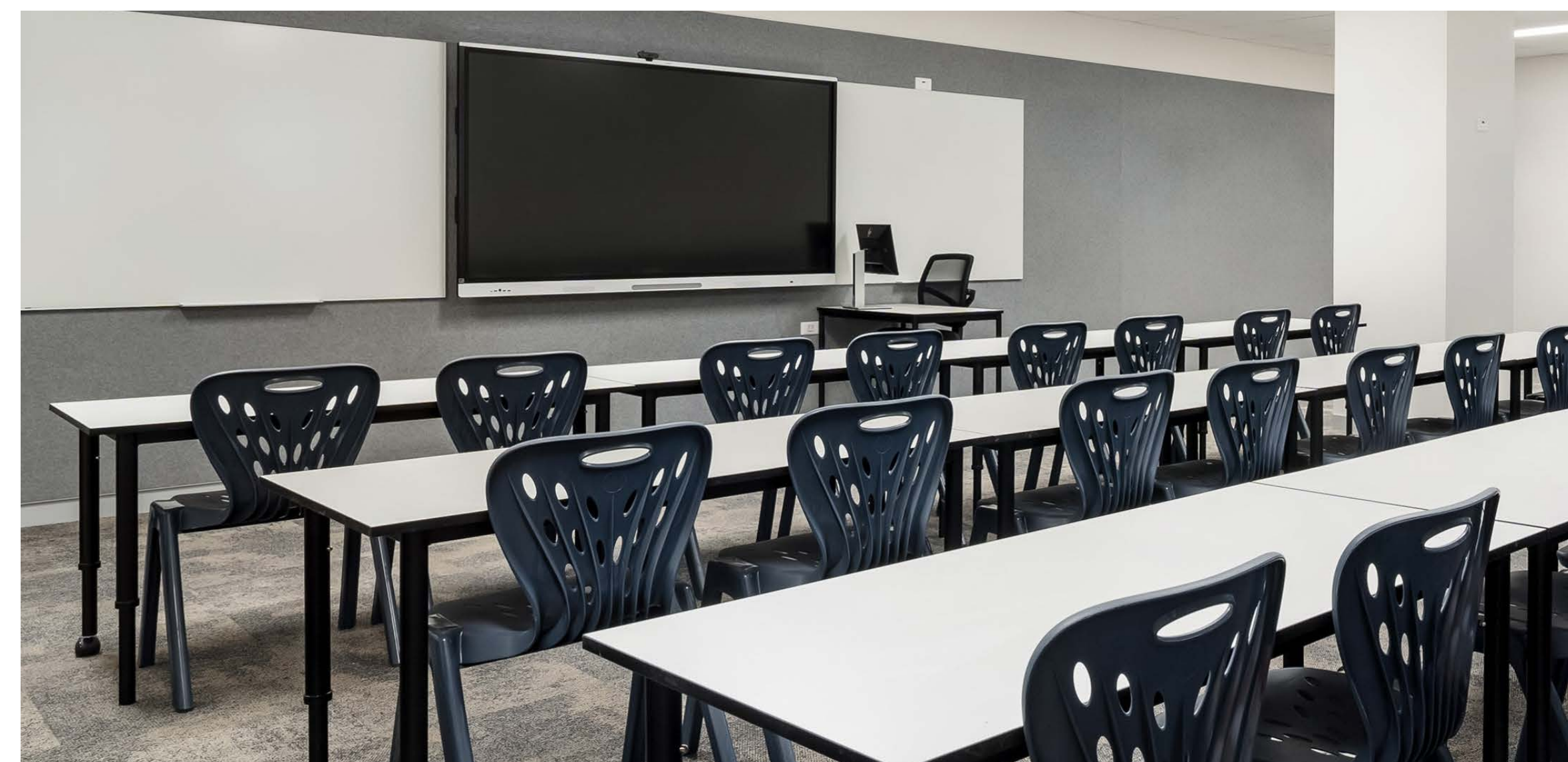
As part of the upgrade project, a portion of the budget is planned to be allocated to minor refurbishment of selected existing spaces across the school.

This includes the minor refurbishment of the Theatrette (Block F) and light refurbishment of selected classrooms and learning commons.

This may include new pinboards and whiteboards, painting of walls and ceilings and new carpet where required (budget permitting).

To get an idea of how the refurbishments may look, we have trialled some minor refurbishments in a pilot room and are working with the school and Asset Management Unit to develop these further.

The full scope of refurbishment will be confirmed in the next stages of design in consultation with the school.



*\*The images above are example learning spaces and landscaping new and upgraded schools across the state. Each learning space at Concord High School will look different and refurbishment and landscaping be prioritised in line with budget and final design.*

## Concord High School upgrade

For more information phone: 1300 482 651  
Email: [schoolinfrastructure@det.nsw.edu.au](mailto:schoolinfrastructure@det.nsw.edu.au)  
[schoolinfrastructure.nsw.gov.au](http://schoolinfrastructure.nsw.gov.au)



# How standardised learning hub layouts work in practice

STEP 1



STEP 2



STEP 3



STEP 4

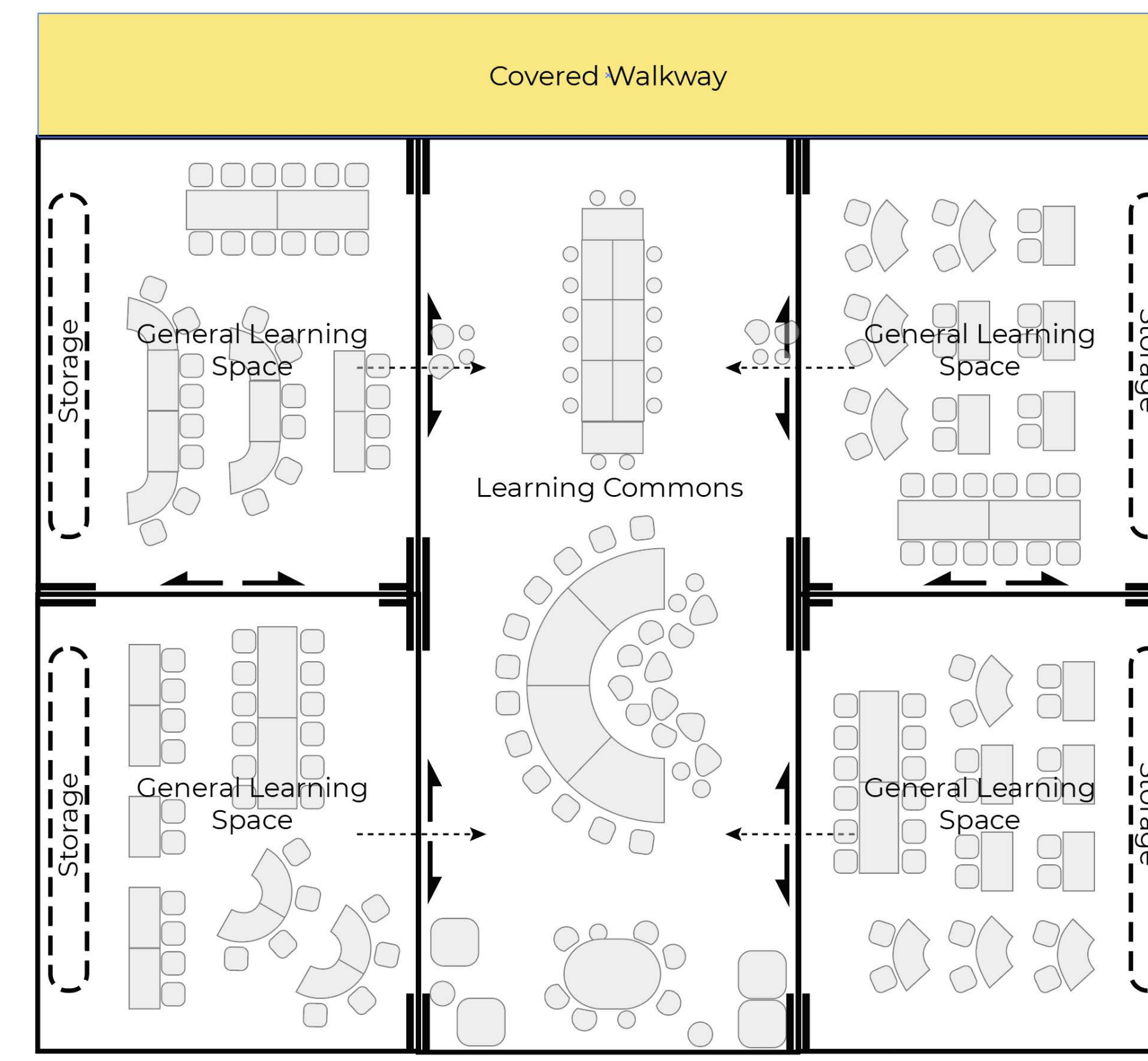
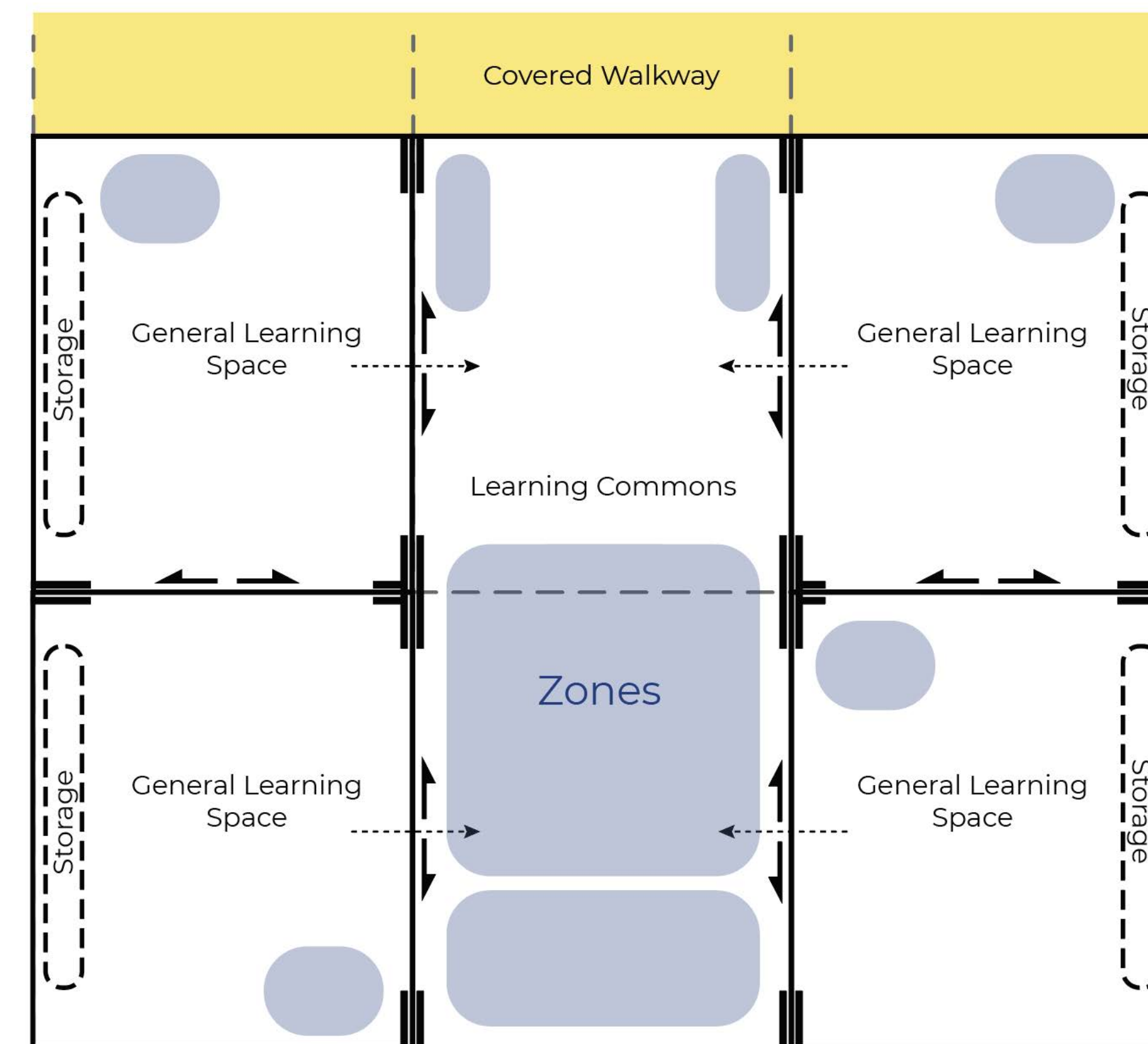
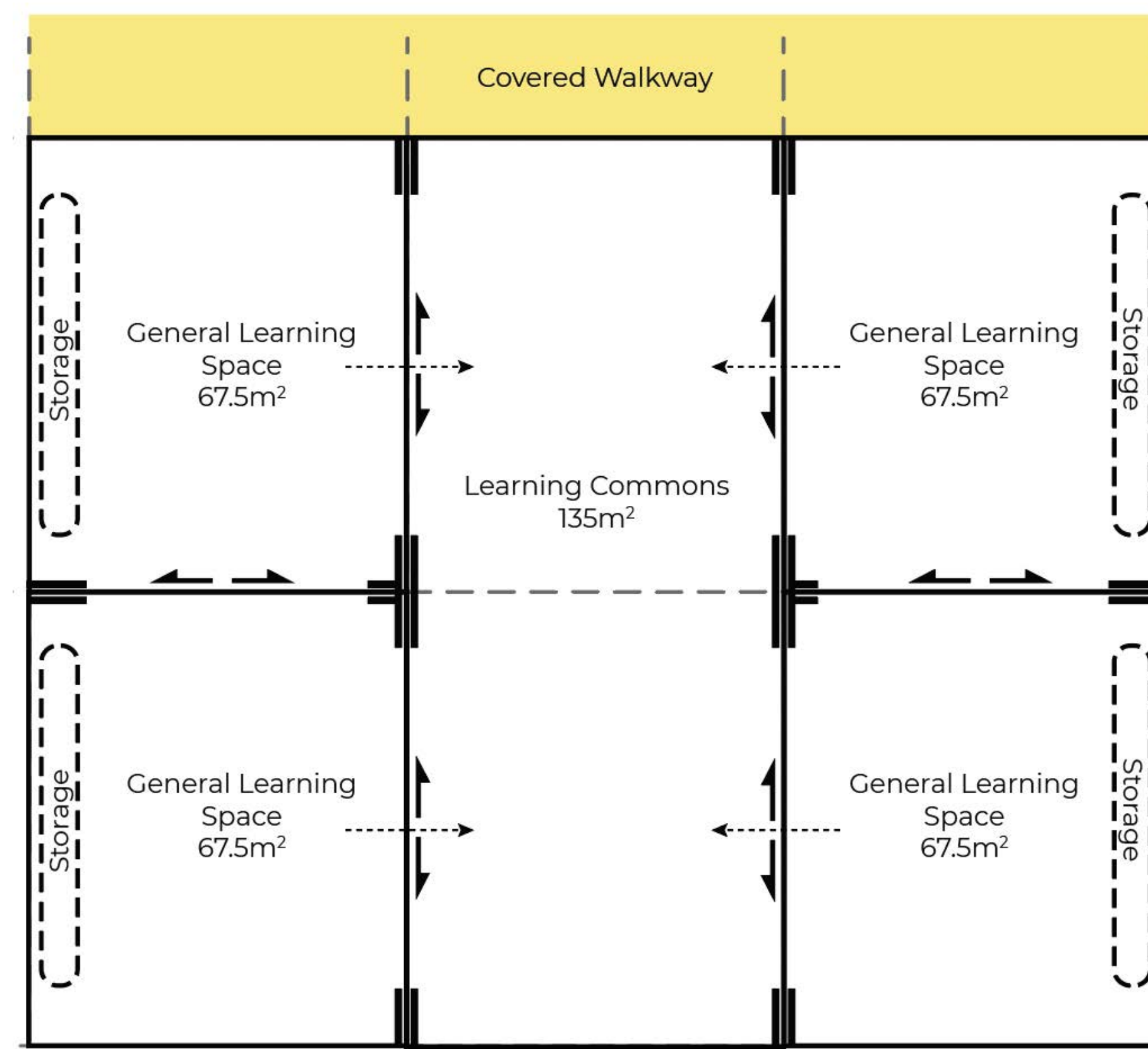


Standardised design for a school learning hub, featuring 4 learning spaces and a learning commons.

The design is modified to suit the school context outlined in the education rationale. Schools can include practical activity areas (PAAs), STEM spaces or other multi-purpose spaces (MPSs) that support collaboration, preparation or sensory needs.

Furniture settings are selected to align to local teaching and learning requirements. Furniture selection is supported by professional learning and other resources.

From a 2D plan to a flexible learning space, ready for students to engage in their learning activities.



# How we build and upgrade schools

In all our new schools or school upgrades when working on design, we must meet our Educational Facilities Standards and Guidelines (EFSG) for both indoor and outdoor education facilities. The guiding principles of the EFSG provide our vision for learning environments and are enriched by the needs and goals of the school and local community. These guidelines guarantee that all new schools and school upgrades align with the NSW Department of Education's vision and can deliver the Australian curriculum while allowing the school community to contribute ideas towards making the school their own.

## Want to know more about how we build and upgrade schools?

We design and deliver schools to suit the individual needs of the local school community. We harness opportunities and solve challenges. As a result, no two schools are exactly the same.

What remains consistent is school infrastructure that empowers teachers to prepare students with the skills and capabilities they need to thrive in a rapidly changing and interconnected world.

Take a look at some of the upgrades we have delivered and see how these varied spaces support teaching and learning.

Visit [edu.nsw.link/SchoolShowcase](https://edu.nsw.link/SchoolShowcase) or scan the QR code.

