



Image of recently completed school

## Concord High School

Planning update

July 2022

### Investing in our schools

The NSW Government is investing \$8.6 billion in school infrastructure over the next four years, continuing its program to deliver 160 new and upgraded schools to support communities across NSW. This builds on the more than \$9.1 billion invested in projects delivered since 2017, a program of \$17.7 billion in public education infrastructure.

The NSW Department of Education is committed to delivering new and upgraded schools for communities across NSW. The delivery of these important projects is essential to the future learning needs of our students and supports growth in the local economy.

### Concord High School

The NSW Government is increasing its investment in public education infrastructure, with funding for 23 new and upgraded school projects announced as part of the NSW 2022/23 Budget, including an upgrade to Concord High School. Planning and consultation with the school leadership and technical experts has begun to develop an education rationale for the school and masterplan options. The project team will undertake a needs analysis and consider demographic trends for the local area to ensure the right project is delivered for the community.

The project is expected to deliver additional contemporary learning spaces, upgraded and new core facilities, and landscaping. The project team is also working to ensure the current minor works taking place at the school are considered where possible in the design for the upgrade project.

### Next steps

- Finalisation of a masterplan, which reflects and responds to feedback received from key stakeholders, including School Leadership and through the Project Reference Group (PRG).
- Development of a concept design in line with the Department's Educational Facilities Standards and Guidelines (EFSG).
- Development of a Business Case for submission to NSW Treasury.
- Ongoing consultation with stakeholders on the design, including Connection to Country.
- Start the Statutory Approval process.

### For more information contact:

School Infrastructure NSW  
Email: [schoolinfrastructure@det.nsw.edu.au](mailto:schoolinfrastructure@det.nsw.edu.au)  
Phone: 1300 482 651  
[www.schoolinfrastructure.nsw.gov.au](http://www.schoolinfrastructure.nsw.gov.au)

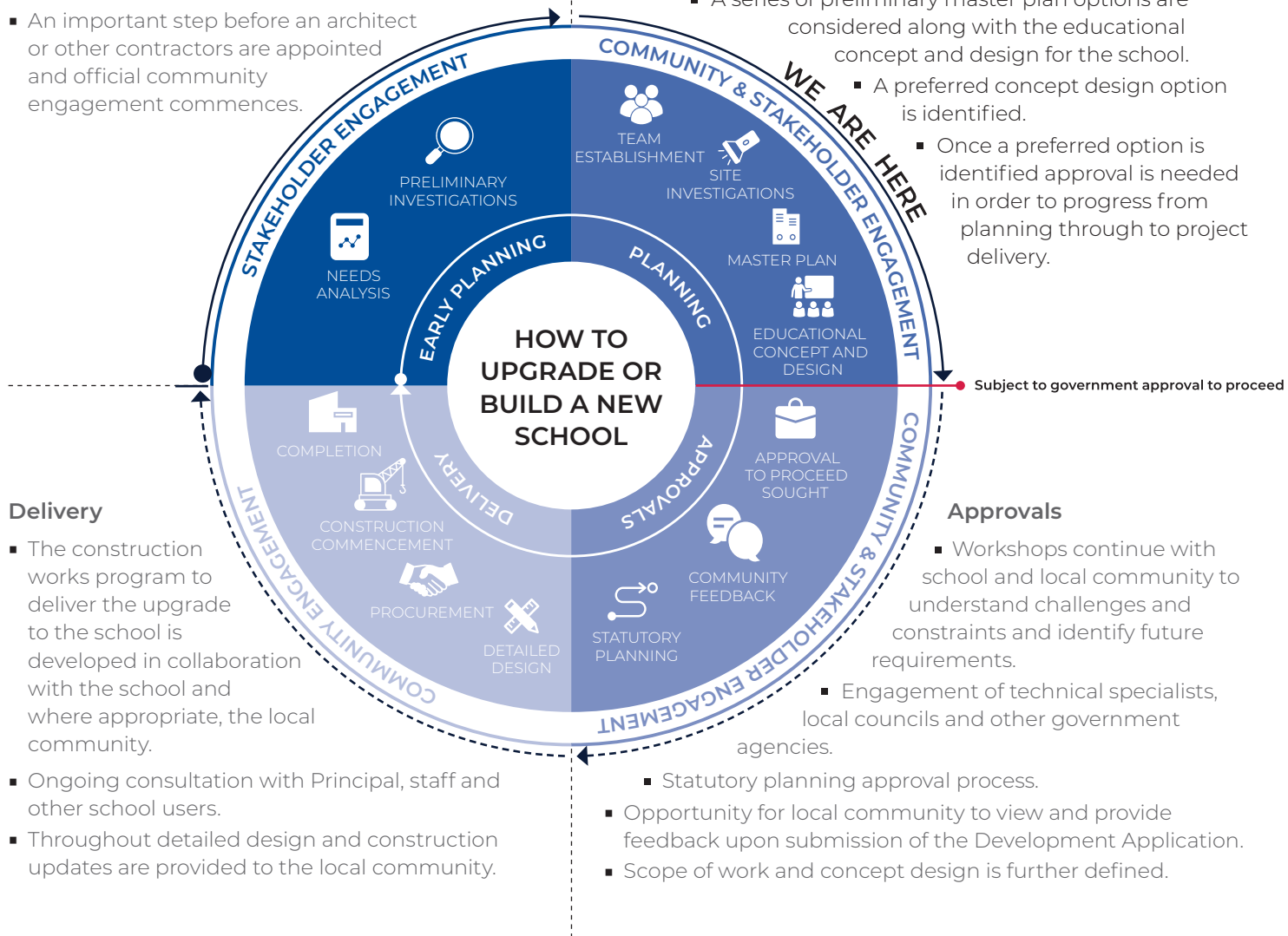
## How to upgrade or build a new school

### Early planning

- Consideration and studies of demographic trends, education requirements, the condition of the existing school buildings, catchment boundaries, heritage requirements, transport links and partnership opportunities.
- Doing so means that we:
  - consider the needs of the local area now and into the future.
  - ensure the right school is designed for the community.
- An important step before an architect or other contractors are appointed and official community engagement commences.

### Planning

- Consultants such as architects and project managers are appointed.
- Investigation and review of site and development of master plan options.
- Master planning considers options for the general size, shape and form of buildings for a specific school site.
- A Project Reference Group (PRG) is established.
- Operational, educational and service delivery factors are understood and considered by the PRG.
  - A series of preliminary master plan options are considered along with the educational concept and design for the school.



### Delivery

- The construction works program to deliver the upgrade to the school is developed in collaboration with the school and where appropriate, the local community.
- Ongoing consultation with Principal, staff and other school users.
- Throughout detailed design and construction updates are provided to the local community.

### Approvals

- Workshops continue with school and local community to understand challenges and constraints and identify future requirements.
  - Engagement of technical specialists, local councils and other government agencies.
- Statutory planning approval process.
- Opportunity for local community to view and provide feedback upon submission of the Development Application.
- Scope of work and concept design is further defined.

### For more information contact:

School Infrastructure NSW  
 Email: [schoolinfrastructure@det.nsw.edu.au](mailto:schoolinfrastructure@det.nsw.edu.au)  
 Phone: 1300 482 651  
[www.schoolinfrastructure.nsw.gov.au](http://www.schoolinfrastructure.nsw.gov.au)

## **Other works at Concord High School**

### **Oval remediation and Seating**

The minor works project includes remediating the sports fields by installing artificial turf in line with hygienist advice. This work will deliver a new sports field with line markings and goal posts, landscaping, and seating and benches surrounding the upgraded field. SINSW is finalising the tender for this work and expects the oval remediation to be started during the upcoming school holidays. The sports field and landscaping works are expected to be completed during Term 1, weather permitting.

A second stage of this minor works project will include tiered seating, which is currently in planning and is expected to start later in 2022.

### **Toilet upgrade**

Congratulations to Concord High School's P & C for receiving a Community Building Partnership Grant to upgrade the toilet facilities at Concord High School. The school is also contributing to this project. School Infrastructure NSW will work closely with the school and the P & C to plan and deliver this upgrade. We will update the community as the work progresses.

### **How can I get involved?**

We are committed to working together with our school communities and stakeholders to deliver the best learning facilities for students. As the project progresses we will share details with the community for feedback.

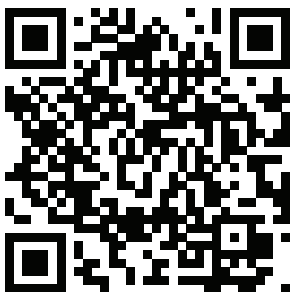
A dedicated project page has been published on the School Infrastructure NSW website, which is updated as the project progresses.

You can view the project page by visiting [edu.nsw.link/CHSUpgrade](https://edu.nsw.link/CHSUpgrade).

Alternatively, you can also contact us via our community information line and email on the details below.

### **How we build schools**

To learn more about School Infrastructure NSW, and how we deliver new and upgraded schools, simply scan the QR code, or visit [edu.nsw.link/SchoolShowcase](https://edu.nsw.link/SchoolShowcase).



---

#### **For more information contact:**

School Infrastructure NSW  
Email: [schoolinfrastructure@det.nsw.edu.au](mailto:schoolinfrastructure@det.nsw.edu.au)  
Phone: 1300 482 651  
[www.schoolinfrastructure.nsw.gov.au](http://www.schoolinfrastructure.nsw.gov.au)