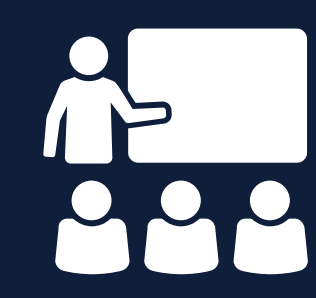


Project overview

The NSW Government is increasing its investment in public education infrastructure, with an upgrade to Concord High School announced as part of the 2022/23 NSW Budget.

School Infrastructure NSW has undertaken a needs analysis and considered demographic trends for the local area to ensure the right project is delivered for the community. The project is expected to deliver additional contemporary learning spaces, upgraded and new core facilities, and landscaping.

The project is in planning stage and requires a business case to be approved by NSW Treasury to determine the full scope of the upgrade, but it is anticipated the upgrade may include:



new permanent teaching spaces



new core facilities including a hall



new or upgraded specialist spaces for performing arts, visual arts and PDHPE



new administration facilities to cater for the growth of the school



removal of demountable buildings



repurposing and refurbishment of some existing spaces



landscaping

The project team is also working to ensure the current minor works taking place at the school are considered (where possible) in the design for the upgrade project. Routine maintenance will also continue as usual.



This image is an example of facilities we are building for students across NSW

Concord High School upgrade

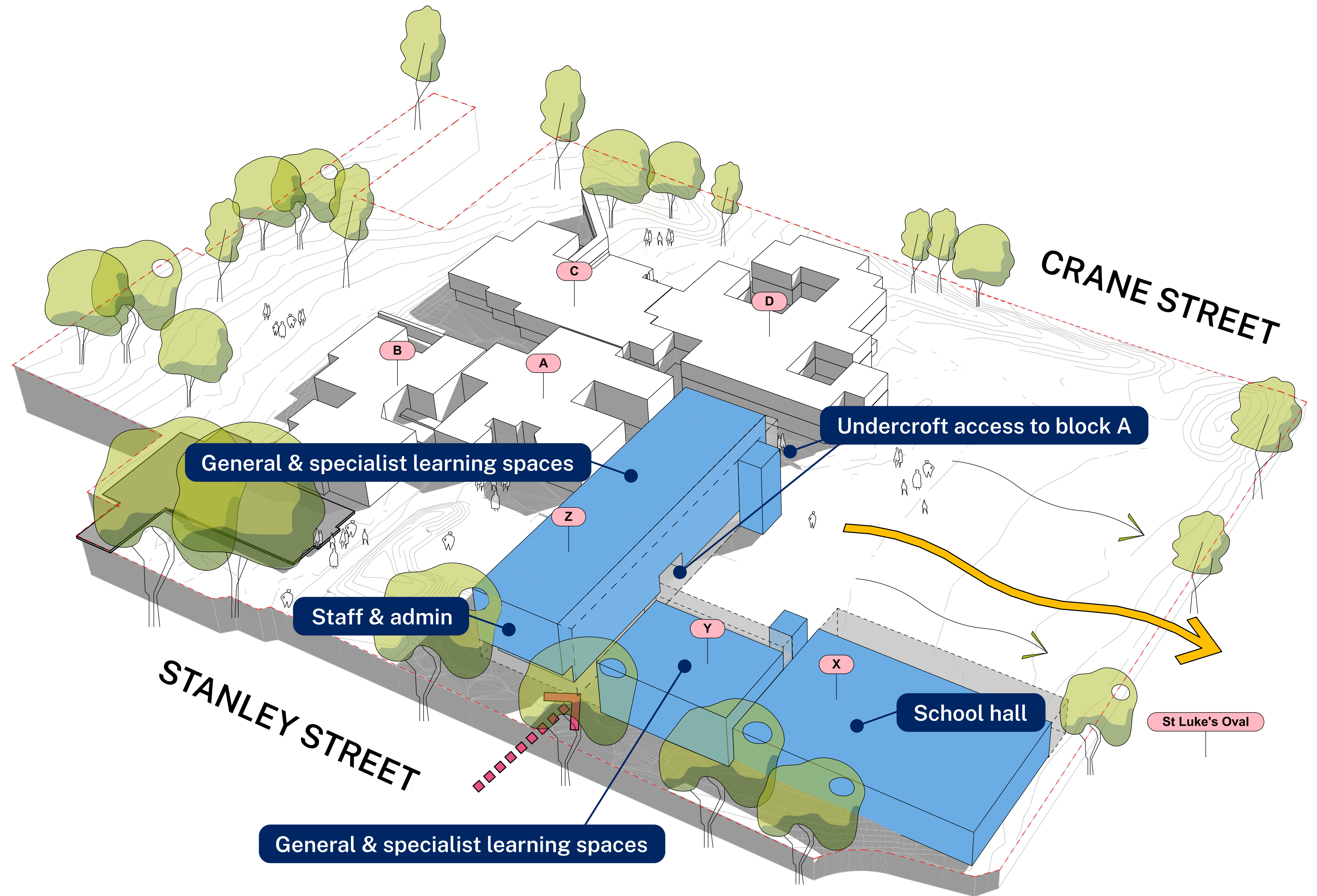
For more information phone: 1300 482 651
Email: schoolinfrastructure@det.nsw.edu.au

Master plan

Proposed building

New buildings with facilities for admin, staff, support class, sport and performance, health/PE, visual arts and general learning spaces.

The upgrade's master plan is subject to amendment during the next stages of design, as well as Treasury and statutory planning approval.



Indicative and subject to change

Concord High School upgrade

For more information phone: 1300 482 651
Email: schoolinfrastructure@det.nsw.edu.au

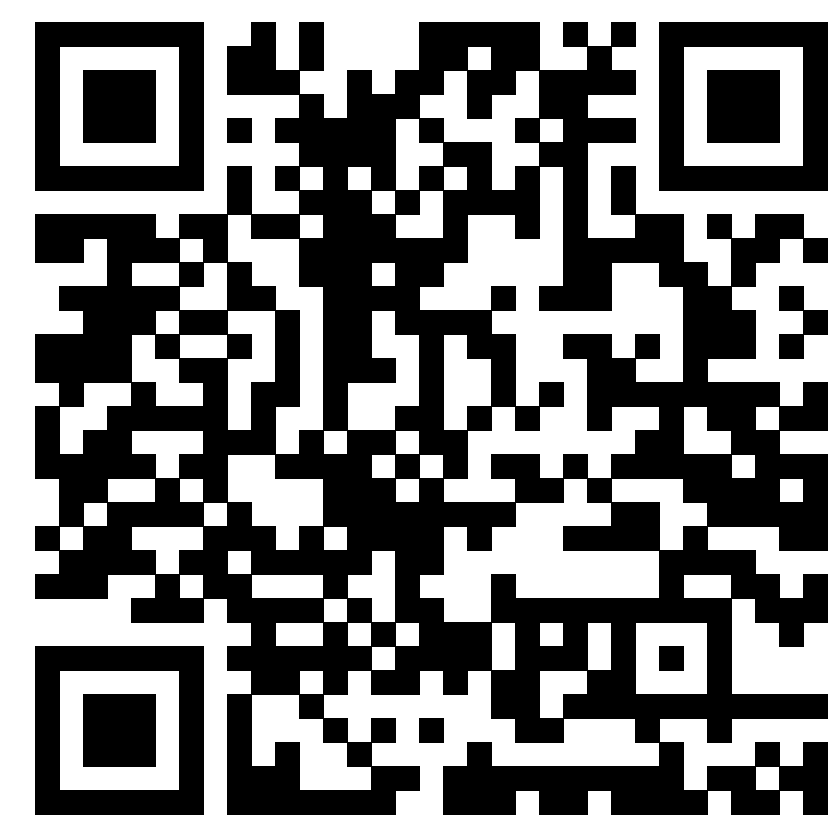
What's next?

We will continue to work with key stakeholders so that we can deliver high quality school facilities for the local community. The next phase of planning aims to further develop the design, to confirm the final layout of the school and its facilities. The early concept design will be refined in consultation with a range of stakeholders with expertise in the design and operation of schools including Principals, construction specialists and the local community. A business case will be developed to support the project.

How can I stay involved?

Tell us what's important to you by taking a survey at edu.nsw.link/ConcordHSsurvey or by scanning the QR code.

Sign up for project updates to keep up with the latest news. All updates will also be distributed through the school.



This image is an example of facilities we are building for students across NSW

Concord High School upgrade

For more information phone: 1300 482 651
Email: schoolinfrastructure@det.nsw.edu.au

Flexible learning spaces

Contemporary learning and teaching prepares students for a diverse and interconnected world. We are evolving the ways we teach our students new skills valued by a changing workforce, understand different ways students learn and support new ways of interacting with information through technology.

Flexible learning spaces are designed and equipped to support contemporary learning and teaching.

What makes a flexible learning space?



Learning space

- Different zones (areas of a building or floors) are designed to support a range of activities sometimes grouped by subject area
- Varied furniture allows for student choice, comfort and flexibility
- Spaces are flexibly connected allowing students to work in varied group sizes
- Connection between indoor and outdoor learning spaces



Organisation

- Movement is encouraged for students and teachers to collaborate and interact
- More than one teacher may be available to students within the learning environment
- Students learn in classes, small groups or individually



Teaching and learning

- Learning is personalised
- Learning is connected across different subject areas
- There is a focus on creativity and innovation with students prototyping, testing and using technology in creative ways



Technology

- Technology is integrated into spaces to extend learning opportunities
- WiFi is available everywhere including outdoors
- Specialist equipment is available for students to innovate, communicate and create

Concord High School upgrade

For more information phone: 1300 482 651
Email: schoolinfrastructure@det.nsw.edu.au

How we build and upgrade schools

In all our new schools or school upgrades when working on design, we must meet our Educational Facilities Standards and Guidelines (EFSG) for both indoor and outdoor education facilities. The guiding principles of the EFSG provide our vision for learning environments and are enriched by the needs and goals of the school and local community. These guidelines guarantee that all new schools and school upgrades align with the NSW Department of Education's vision and can deliver the Australian curriculum while allowing the school community to contribute ideas towards making the school their own.

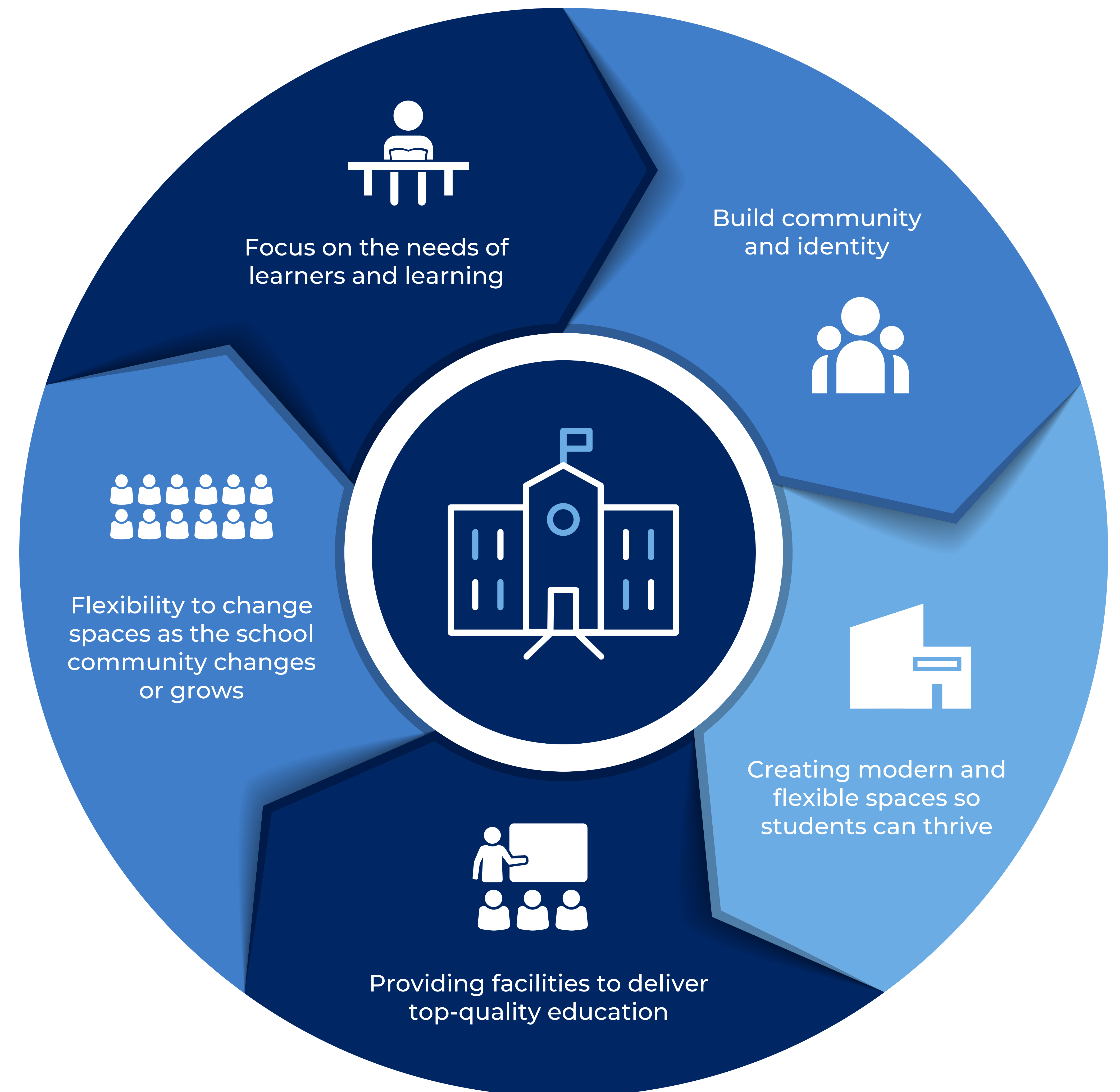
Want to know more about how we build and upgrade schools?

We design and deliver schools to suit the individual needs of the local school community. We harness opportunities and solve challenges. As a result, no two schools are exactly the same.

What remains consistent is school infrastructure that empowers teachers to prepare students with the skills and capabilities they need to thrive in a rapidly changing and interconnected world.

Take a look at some of the upgrades we have delivered and see how these varied spaces support teaching and learning.

Visit edu.nsw.link/SchoolShowcase or scan the QR code.



Concord High School upgrade

For more information phone: 1300 482 651
Email: schoolinfrastructure@det.nsw.edu.au

How we build and upgrade schools

Early planning

- Consideration and studies of demographic trends, education requirements, the condition of the existing school buildings, catchment boundaries, heritage requirements, transport links and partnership opportunities.
- Doing so means that we:
 - consider the needs of the local area now and into the future
 - ensure the right school is designed for the community.
- An important step before an architect or other contractors are appointed and official community engagement commences.

Delivery

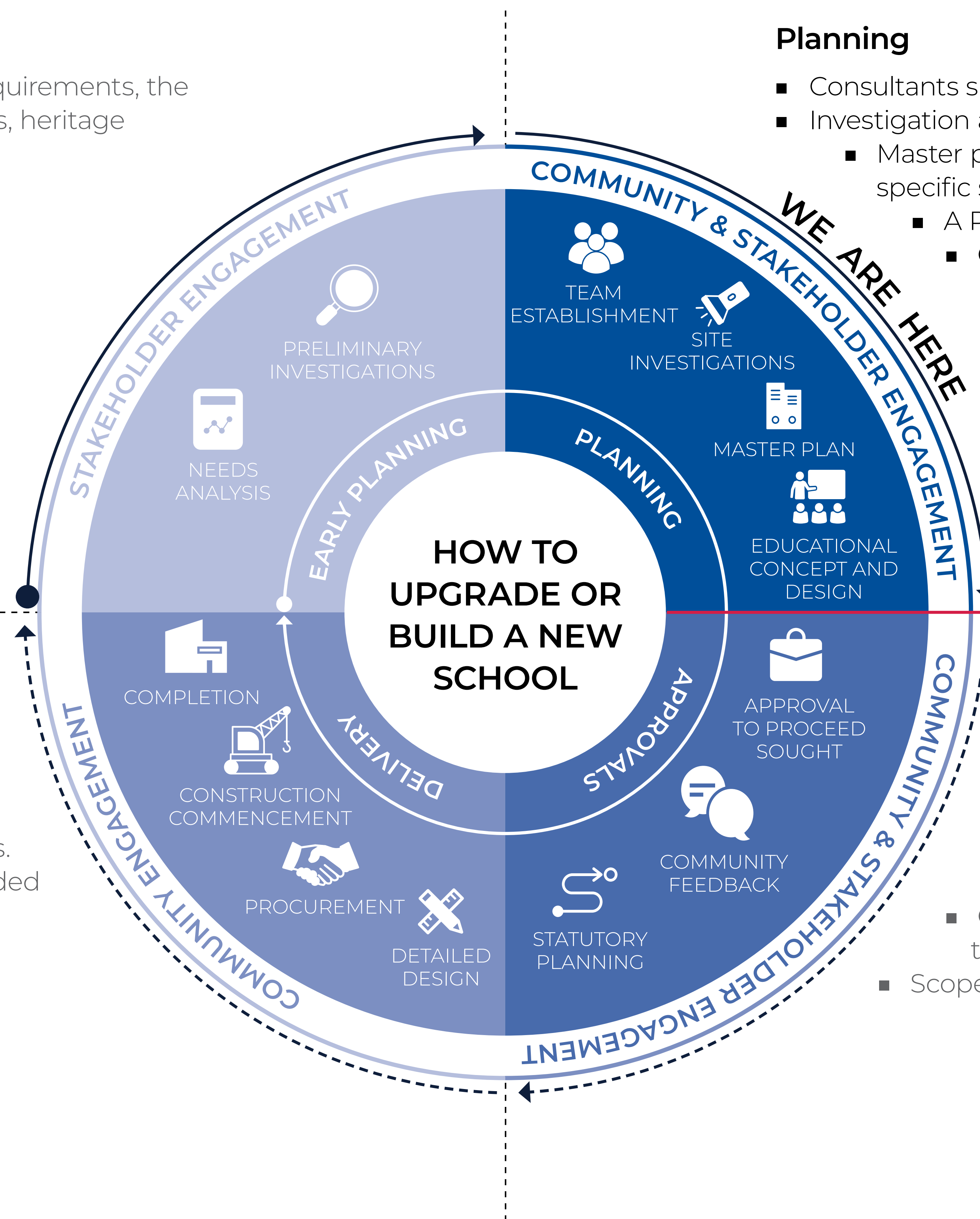
- The construction works program to deliver the upgrade to the school is developed in collaboration with the school and where appropriate, the local community.
- Ongoing consultation with Principal, staff and other school users.
- Throughout detailed design and construction updates are provided to the local community.

Planning

- Consultants such as architects and project managers are appointed.
- Investigation and review of site and development of master plan options.
 - Master planning considers options for the general size, shape and form of buildings for a specific school site.
 - A Project Reference Group (PRG) is established.
 - Operational, educational and service delivery factors are understood and considered by the PRG.
 - A series of preliminary master plan options are considered along with the educational concept and design for the school.
 - A preferred concept design option is identified.
 - Once a preferred option is identified approval is needed in order to progress from planning through to project delivery.

Approvals

- Workshops continue with school and local community to understand challenges and constraints and identify future requirements.
- Engagement of technical specialists, local councils and other government agencies.
 - Statutory planning approval process.
 - Opportunity for local community to view and provide feedback upon submission of the Development Application.
- Scope of work and concept design is further defined.



Concord High School upgrade

For more information phone: 1300 482 651
Email: schoolinfrastructure@det.nsw.edu.au

How standardised learning hub layouts work in practice

STEP 1



STEP 2



STEP 3



STEP 4

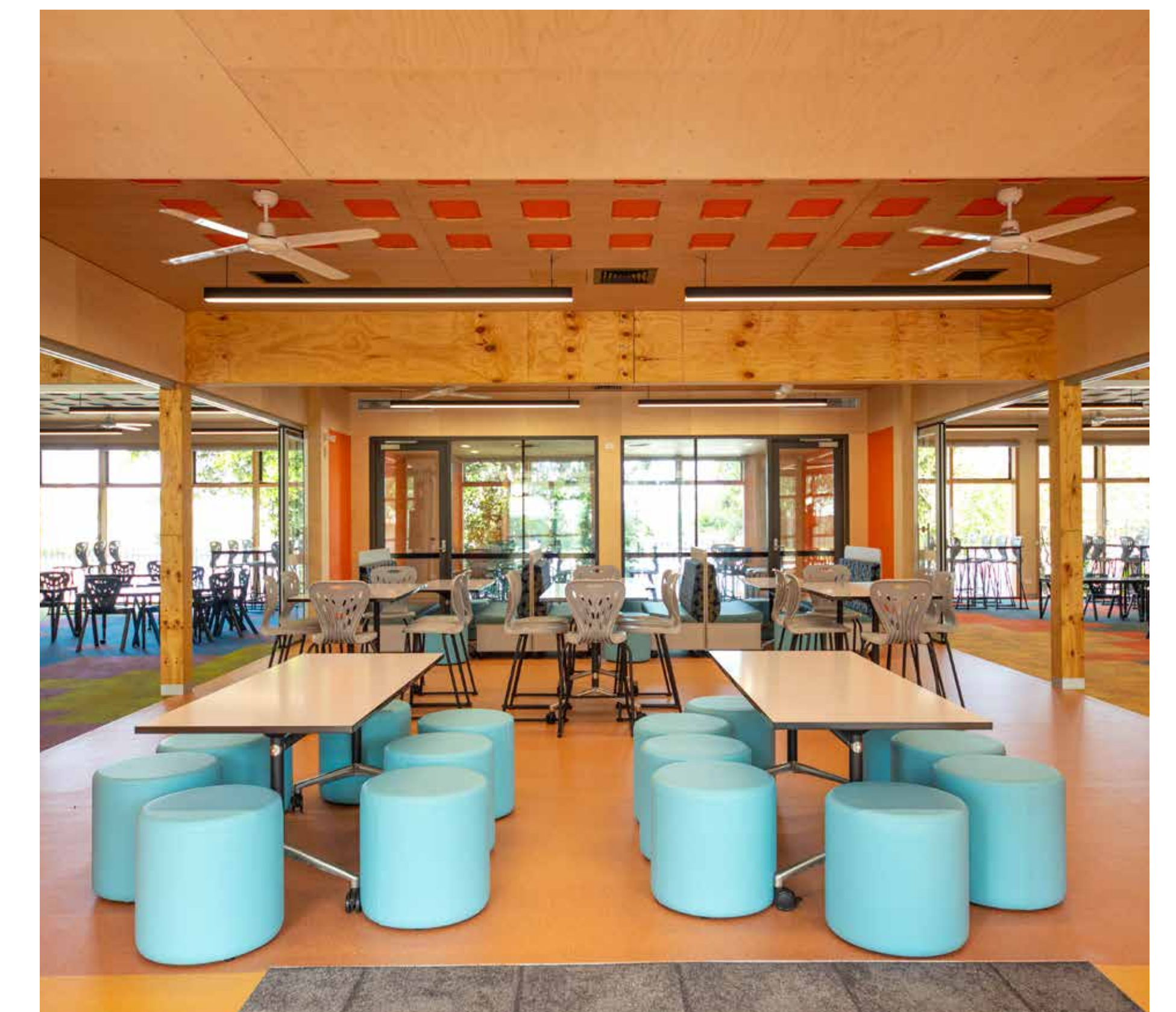
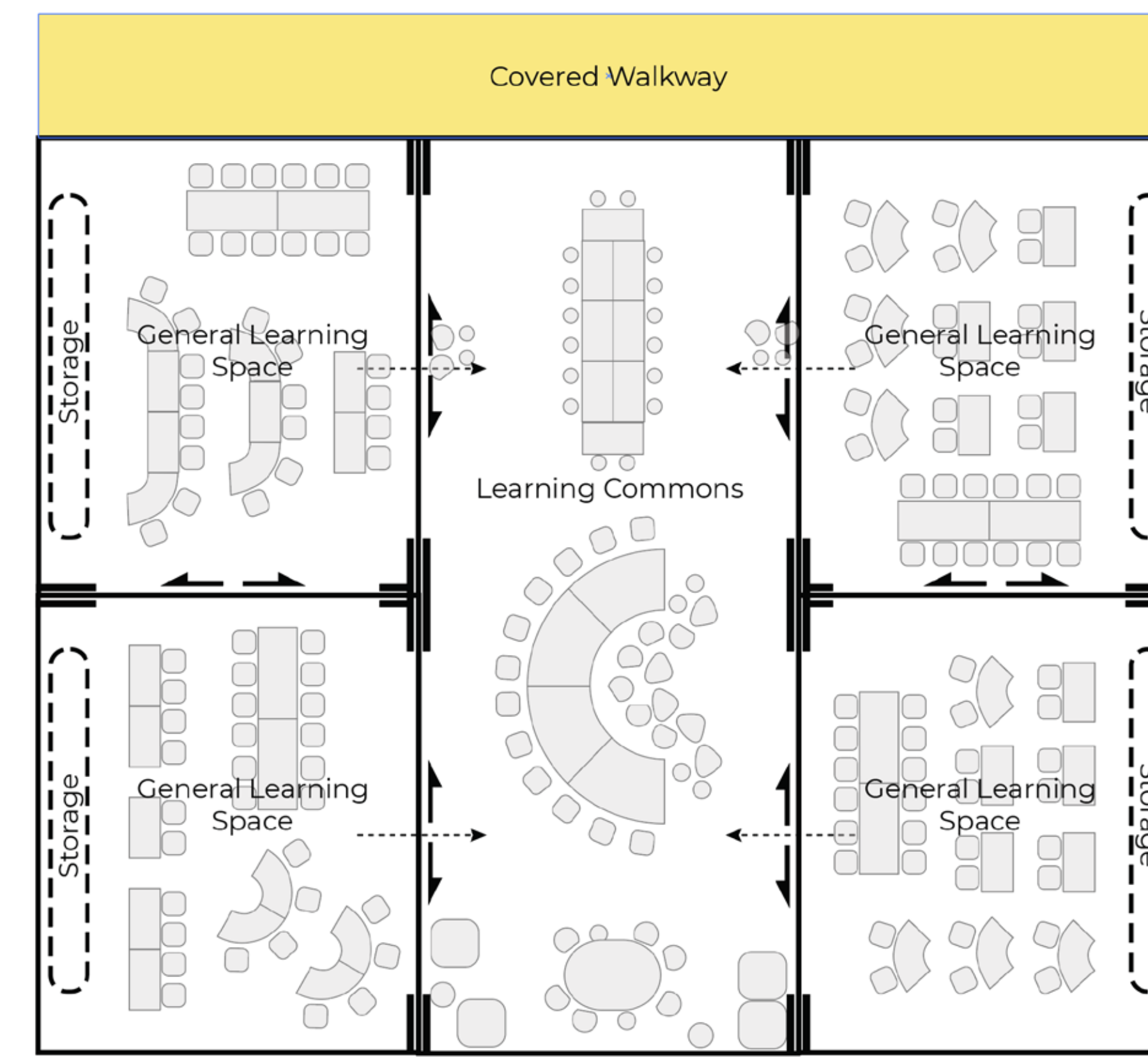
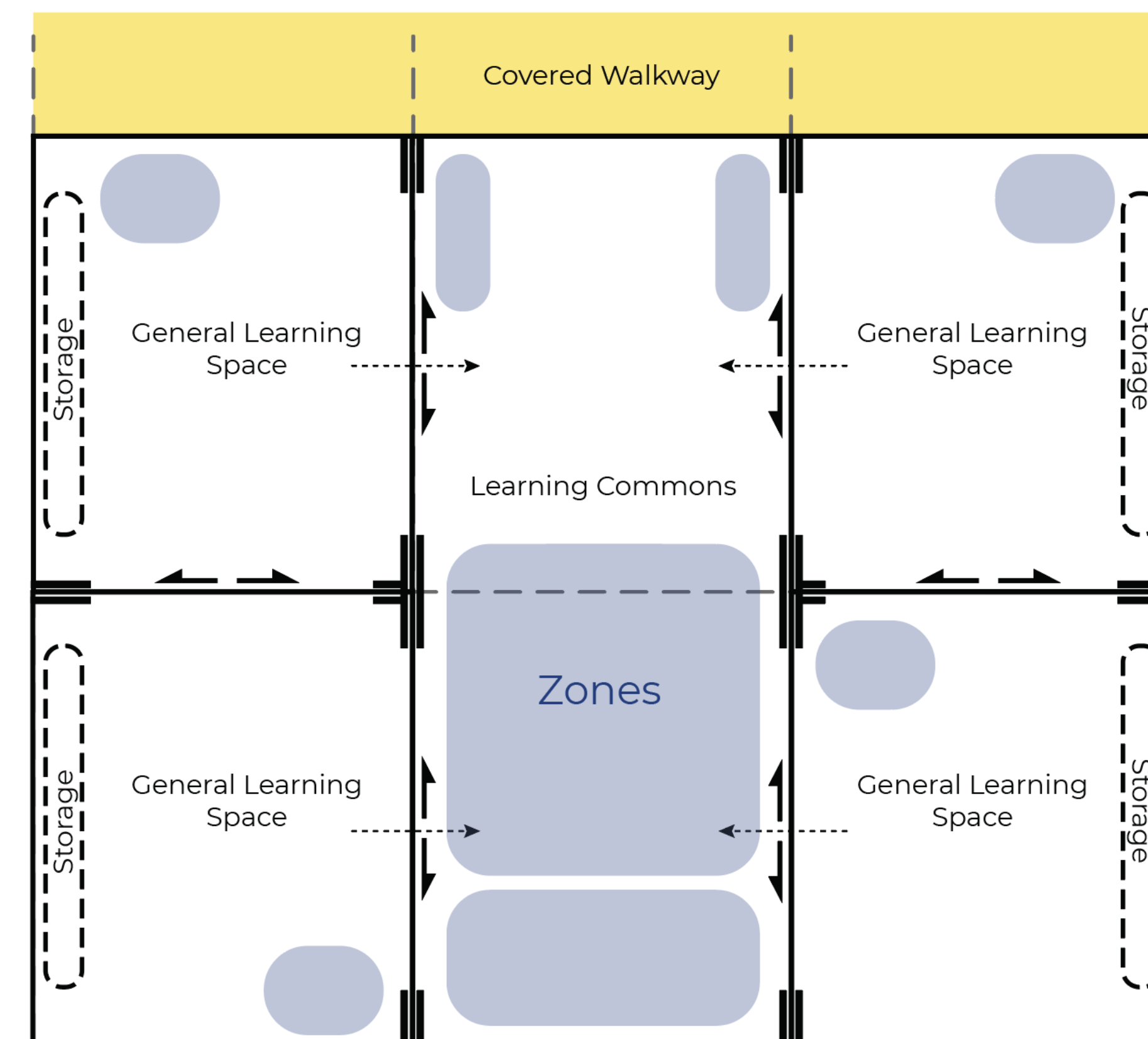
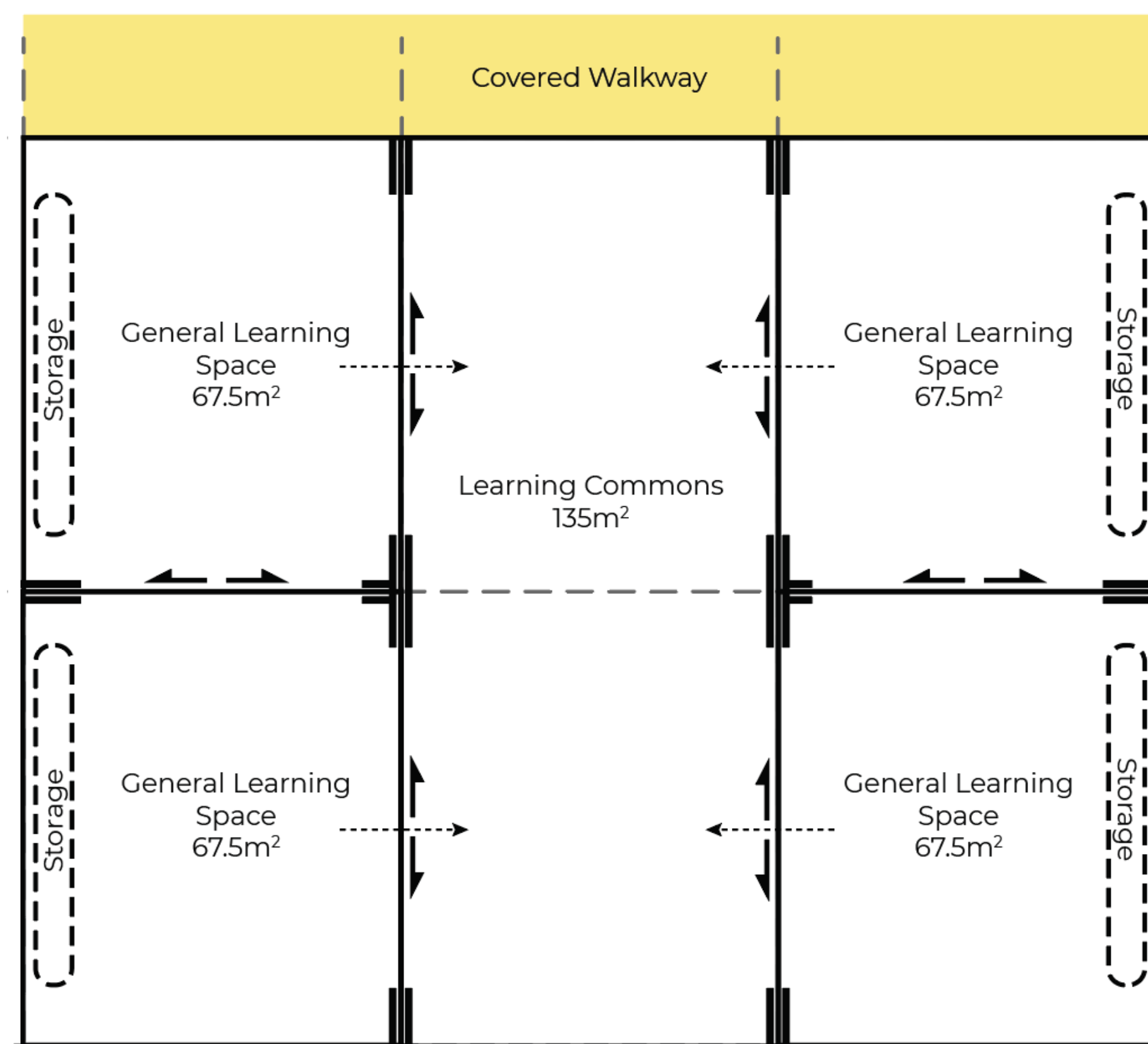


Standardised design for a primary school learning hub, featuring 4 learning spaces and a learning commons.

The design is modified to suit the school context outlined in the education rationale. Schools can include practical activity areas (PAAs), STEM spaces or other multi-purpose spaces (MPSs) that support collaboration, preparation or sensory needs.

Furniture settings are selected to align to local teaching and learning requirements. Furniture selection is supported by professional learning and other resources.

From a 2D plan to a flexible learning space, ready for students to engage in their learning activities.



Concord High School upgrade

For more information phone: 1300 482 651
Email: schoolinfrastructure@det.nsw.edu.au

Offsite manufacturer and onsite assembly

The construction approach may use volumetric modules. This method sees modular construction classrooms built in a factory offsite, then installed as a complete module at the school site.

There are many benefits to these modern construction methods



We save time – it's around 30 per cent faster on the construction site.



There are great sustainability gains, including reduced carbon emissions, material waste and water waste on sites.



We are making a social impact, creating new jobs, expanding opportunities for local training and upskilling and harnessing inherent productivity and safety gains to improve working conditions in the construction industry.



It's safer to manufacture building parts in purpose-built spaces and the assembly requires less interface on sites.



Offsite manufacturing and onsite assembly means less noise, less dust, less traffic and less disruption.

Concord High School upgrade

For more information phone: 1300 482 651
Email: schoolinfrastructure@det.nsw.edu.au