



These images are examples of facilities we are building for students across NSW

## School community consultation

### Key stakeholders have been involved from the beginning

- A project reference group was formed with P&C representatives from both public and high school
- Teachers and students were consulted in design user group sessions
- School community information sessions were held
- Priorities gleaned from these engagements has informed the development of the design.

### Based on questions and feedback, we will continue:

- Consultation with teachers about design
- Discussions about how the dual high school campus will function
- To keep the school community informed about plans to address primary school enrolment levels
- Work with stakeholders about the relocation of the Intensive English Centre to St Ives High School
- Communicate with stakeholders about how construction will be managed alongside learning environments.

## For more information

We are committed to working together with our school communities and other stakeholders to deliver the best possible learning facilities for students. We encourage feedback from the school and local community about the Chatswood Education Precinct.

## Stay informed



### Website

Stay up to date by visiting the School Infrastructure NSW website [schoolinfrastructure.nsw.gov.au](http://schoolinfrastructure.nsw.gov.au)



### Email

Contact the Community Engagement team by emailing [schoolinfrastructure@det.nsw.edu.au](mailto:schoolinfrastructure@det.nsw.edu.au)



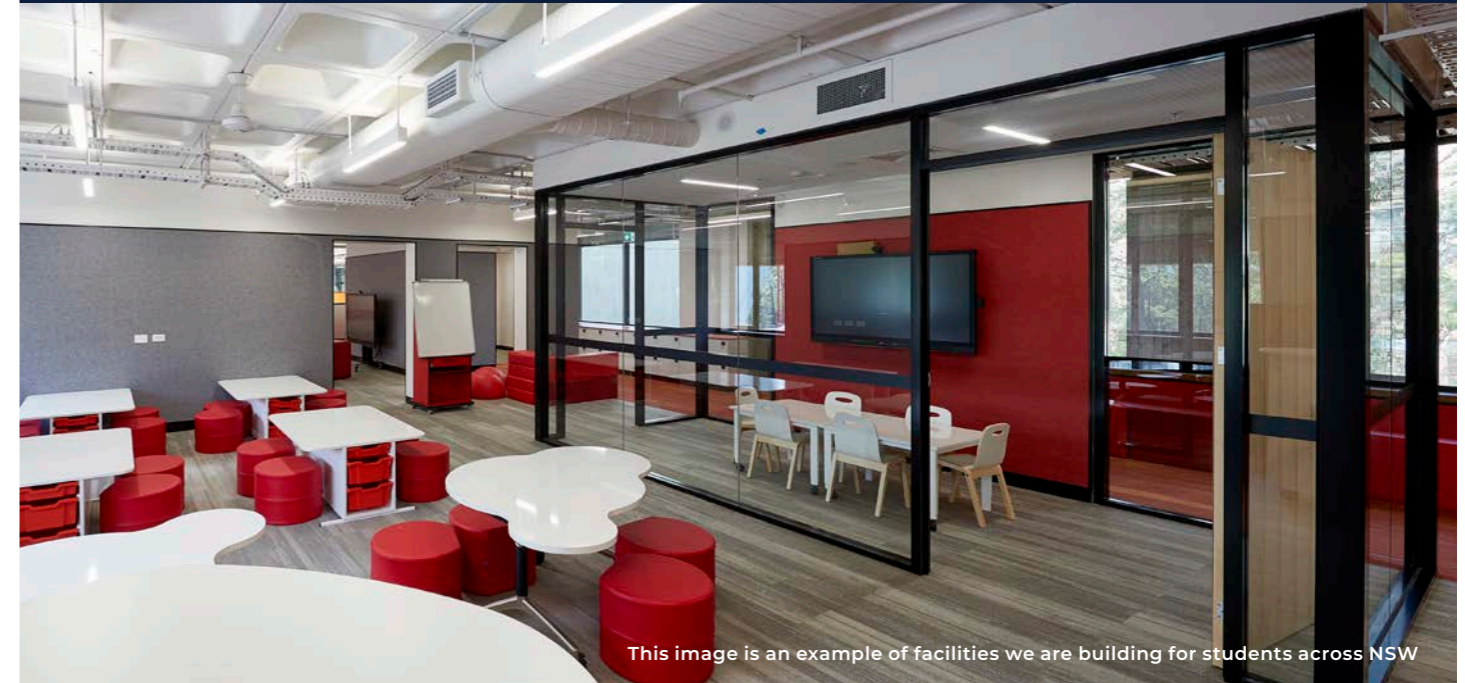
### Phone

Contact us between 9am–5pm, Monday to Friday on **1300 482 651**

# Chatswood Education Precinct

Information for parents, carers, students, staff and residents

May 2019



This image is an example of facilities we are building for students across NSW

The NSW Government is planning to build a landmark education precinct in Chatswood, through the redevelopment, relocation and expansion of Chatswood Public School, Chatswood High School and Chatswood Intensive English Centre.



New and refurbished contemporary learning and teaching facilities for up to **1,200 primary school students and 2,000 secondary school students**



The new schools will deliver almost three times the play space currently allocated to our primary school students



Specialist teaching facilities such as science, art and music rooms



Dedicated performing arts spaces



A new gymnasium and recreational areas for high school students



New libraries



An indoor sports facility

# Chatswood Education Precinct

This landmark education precinct will provide new and refurbished contemporary learning and teaching facilities, to meet the needs of students and the local community.

With a reputation for educational excellence, including opportunity classes at the Public School and an academically selective stream at the High School, both schools have seen significant enrolment growth with resulting pressure on the available space and facilities at each school.

The Chatswood Education Precinct will deliver new and upgraded buildings at both schools to combine kindergarten to year 6, and years 7 to 9 at the existing high school site at Centennial Avenue. In addition to upgrading and repurposing the public school site at Pacific Highway as a Senior Campus for years 10 to 12.

The development will provide an integrated education precinct with new classrooms, collaborative learning spaces, open space, sports fields and associated facilities to cater for approximately 1,200 primary school students on the Centennial Avenue Site and 2,000 secondary school students (1,000 on the Centennial Avenue Site, 1,000 on the Pacific Highway Site).

## Project update

School Infrastructure NSW is working closely with the Principals and staff to define the school requirements and educational principles which are being incorporated into the overall design.

A project team of architects, planners, and design professionals combined with the school leadership and representatives of the P&C, have formed a Project Reference Group to meet regularly to define the school requirements and educational principles to incorporate into the overall design.

Early design and project staging consultation has been undertaken with the school community, school staff, the NSW Government Architect's Office and other government agencies including Roads and Maritime Services, Transport for NSW and Willoughby Council.

Feedback from the Government Architect led to significant changes to the plan for the Centennial Avenue site, swapping the locations of the primary school and years 7-9 – an improved outcome for the school and students.

The Department has been engaging with the IEC school leadership and a staff representative to explore relocation options for the IEC.

The IEC will relocate to St Ives High School at the end of this year. The decision to relocate the IEC was based on the strong support for it to be co-located with a High School in the Northern Sydney area and ensure a long-term solution to meet the current and future needs of students who attend IECs.

## What's next?

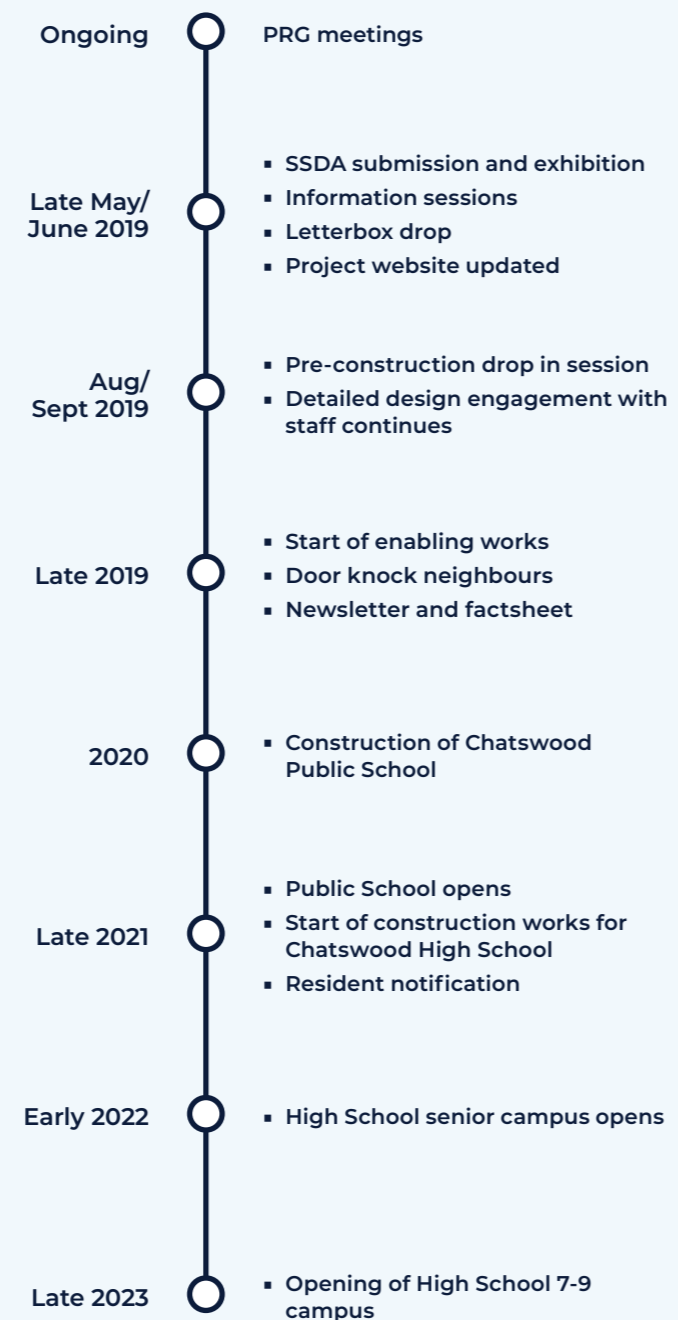
The State Significant Development Application (SSDA) will be lodged shortly with the Department of Planning and Environment (DPE) and will be on public exhibition for a minimum of 28 days. Community members will be notified when these plans are available for viewing.

## Project timeline

Early enabling works for the new facilities will commence in mid-2019 and the project is expected to be completed by late 2023.

The project will be staged to ensure minimal impact to students, staff and the wider community.

The IEC will relocate from Chatswood High School to St Ives High School at the end of 2019.



\*pending planning approvals

## Centennial Avenue site

### Primary School K-6

Two new 3 and 4-storey buildings providing:

- Classroom home bases
- Collaborative learning spaces
- Special purpose home bases

### High School Years 7-9

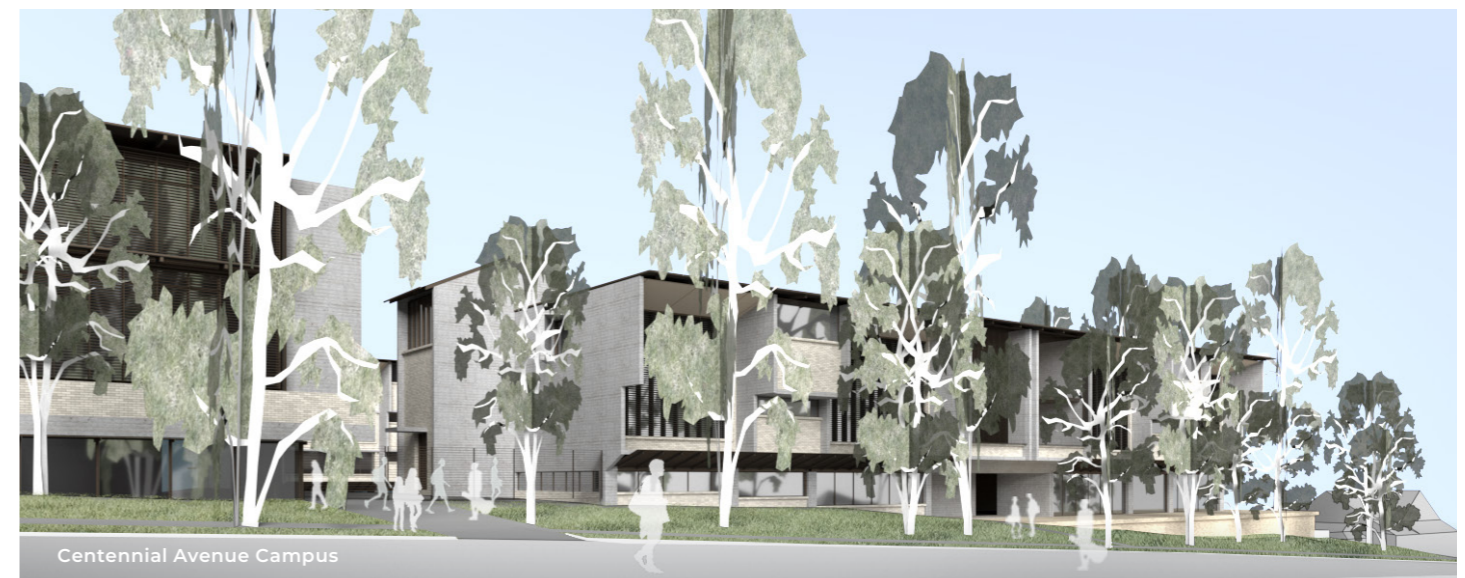
New 4-storey building and refurbishment of Blocks M, H & K providing:

- General learning areas
- Science, Technology, Engineering and Maths (STEM) learning areas and laboratories

### Co-located Facilities

New multi-storey buildings providing:

- Primary School and High School Y 7-9 libraries
- Multi-purpose Hall
- Canteen
- Primary School and High School Administration



## Pacific Highway site

### Senior Campus Years 10-12

Refurbishment of Block A, B & I providing:

- General learning areas
- Senior Campus administration and staff facilities
- Library

Two new 4-storey buildings providing:

- Learning areas and laboratories
- Hall and Canteen

### BOTH SITES – early concept

- New outdoor covered and uncovered play areas
- Removal of existing demountable teaching spaces